
Dekton® Facades Use and care

Ultracompact Surfaces

 **DEKTON®**
designed by **COSENTINO**



Dekton® for Facade

Dekton® has practically zero porosity, easy to clean. Rainfall is effective to remove any accumulated dirt and to keep the external cladding clean.

But the dirt and soil depends largely on the local atmospheric conditions depending on the location of the project. In heavily industrialized areas, coastal areas and the areas where construction works are being carried out, it might be necessary to clean the product occasionally or on periodic basis, solely for the purpose of aesthetic appearance.

If Dekton® cleaning is required, the schedule might be adjusted with other cleaning operations of the external facade for example, glass and painted aluminium components.

If automatic wall cleaning machine is to be used, a pre-test should be done in the early stage of equipment design to confirm that there is no detrimental effect on the panel as well as to clarify the cleaning effect and frequency.



This manual shows the basic guidelines for maintenance and cleaning of Dekton:

Final Cleaning at Works

The surface uses to present residues from the jobs during the installation of Dekton as cement, silicon, epoxy, etc. Due to this, it is necessary to do a final job cleaning for ensure a total cleanliness of Dekton.

Cleaning protocol:

A) Prepare the cleaning products and tools

- Descaling detergent. (Acid-based buffered)
- Epoxy remover cleaning product
- High-pressure washer

- Brush or scourer and sponge can be used in case of not having a high-pressure washer

B) Procedure

- Mix the acid product and water (according to the manufacturer)
- Spread the mix on the facade and leave it for few minutes (according to the manufacturer)
- Clean and clear out with a high-pressure washer; without the high-pressure washer, is recommended to rub with a brush and clear out with a humid sponge.

Cleaning and Maintenance

Maintenance has the important purpose of removing dirt superficially embedded. Proper maintenance guarantees a natural appearance of the facade.

Site should be inspected on six monthly or yearly basis, depending upon the atmospheric conditions where the project is located as defined above.

For cleaning, it is recommended to use a neutral detergent with high cleaning power, avoiding too soapy or with presence of waxes cleaning products.

The simplest procedure for cleaning is to spread the solution, following manufacturer instructions, wait for few minutes and clear out with high-pressure washer; without the high-pressure washer, is recommended to rub with a brush and clear out with a humid sponge.



Stubborn Stains

For stubborn stains, those which have been there for a while, or special composition, that are stuck to the surface and cannot be removed with daily cleaning, we recommend following the table below.

Stain	Cleaning product
Liquids and organic residues	Conventional detergent, grease remover
Grease and oil	Degreaser
Rubber	Degreaser
Resins, putties, silicone, dyes	Solvent, Acetone
Traces of cement adhesives	Acid
Plaster	Plaster remover, Acid
Tar	Degreaser
Nicotine	Abrasive deaning product, Solvent, Acetone
Metal Rust	Hydrochloric acid

* Avoid contact of Dekton® with hydrofluoric acid.

For the cleaning and maintenance of Dekton facade, you can use several [commercial products](#).



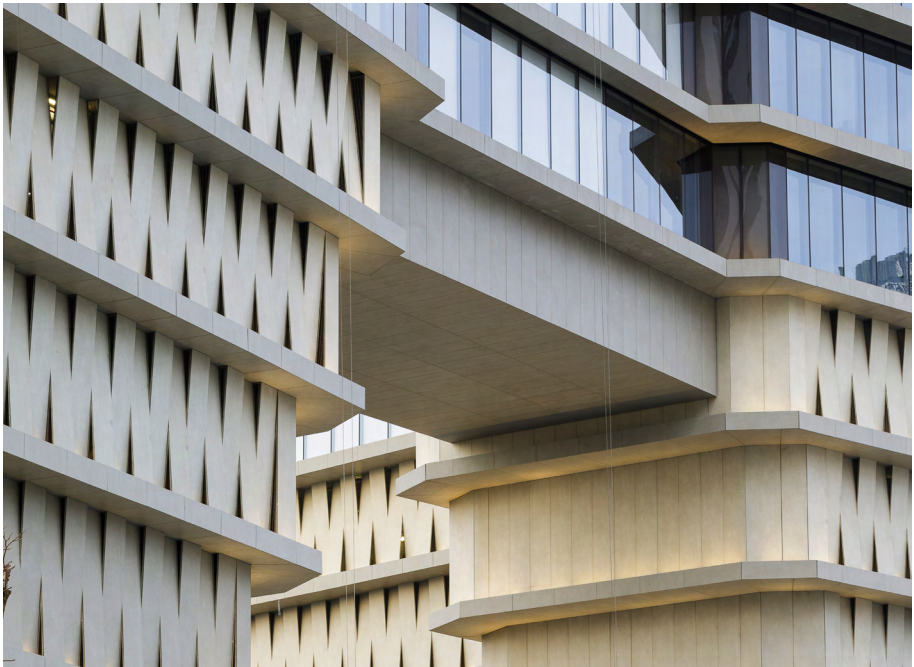
Facade Conservation

Conservation has the important purpose of maintaining good condition, not only of the material, but of the entire facade.

- A. Inspections. Annual maintenance inspections should be performed to ensure that ventilation and drainage pathways remain clean, that rain drips and drains are complete and in good order, and that seals, linings, crowns, and closures are installed securely.
- B. Maintenance. The instructions shared in this document must be followed for the façade cleaning. During cleaning, appropriate measures will be taken to avoid damage to the panels and the anchoring system or joints. Generally, the cleaning and rinsing

operation are carried out from the top to bottom of the building to facilitate the process.

- C. Replacements. Damaged panels should be replaced as soon as possible, following the installer's instructions and taking all necessary safety and health precautions.
- D. External elements. Poorly executed elements that are the source of stains and fouling in general, such as rusty or poorly executed profiles, must be corrected or removed. The drip of the cleaner to the lower parts of the building should be minimized. When dripping is inevitable, the areas should be rinsed as soon as possible.







COMPANY WITH
MANAGEMENT SYSTEM
CERTIFIED BY DINV GL
= ISO 9001 =
= ISO 14001 =

* Check terms and conditions

* To obtain more information about hues with NSF certificate please visit www.nsf.org

A product designed by **COSENTINO**

Ctra. Baza a Huércal-Overa, km 59. 04850 Cantoria, Almería (Spain)

+34 950 444 175 info@cosentino.com www.cosentino.com

www.dekton.com DektonbyCosentino @Dekton