

COSENTINO®

Cosentino Inspiration Book

AT THE CENTRE
OF DESIGN

SILESTONE

—

DEKTON

—

SENSA

C·Top Design



PRODUCT
CONTENT

Cosentino Inspiration Book

AT THE CENTRE
OF DESIGN



ACCESS TO THE
PROFESSIONAL AREA
AT **COSENTINO.COM**

SILESTONE

—

DEKTON

—

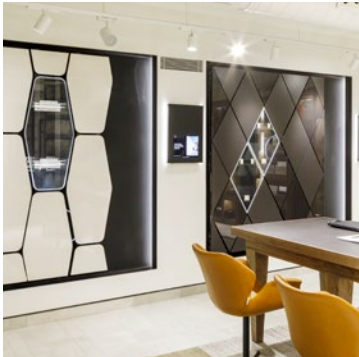
SENSA

→ 06

01
COSENTINO®
TOP DESIGNERS



Digital Universe → 08

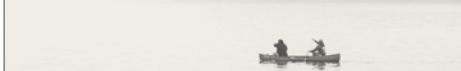


Cosentino® City → 10



C·Top Magazine → 16

02
COSENTINO



Certifications → 20

→ 22

03
SUSTAINABILITY

- Energy → 23
- Water → 24
- Materials → 24
- CO₂ Neutral → 25

→ 26

04
PRODUCTS
AND BRANDS



- Dekton® → 26
- Dekton® Slim → 29
- Kraftizen Collection → 34
- Onirika Collection → 40
- Silestone® → 48
- Sunlit Days Collection → 54
- Sensa by Cosentino® → 62

→ 64

05
SPACES



→ 66

5.1
LIVING ROOMS



Innovative surfaces that make the designer's vision come true in the home, to reimagine indoor and outdoor spaces.

→ 116

5.2
BATHROOMS



- Sinks → 180
- Shower Trays → 184
- Bath tops → 186
- Floors → 186

→ 190

5.3
EXTERIOR



→ 218

5.4
KITCHENS



Silestone® Sinks → 276

→ 278

5.5
FURNITURE



Cosentino C·Top Design

The epicentre
of inspiration
& collaboration
with design
professionals.

C·Top Design is our value proposition for interior designers and interior architecture professionals. This program was born with the purpose of honouring a key profession in the present and future of Cosentino®.

C·Top Design represents a shared and innovative vision, a center of ideas to accompany professionals in the definition of the new design paradigm: high-impact, value-adding spaces for contemporary society.



Through a shared code, we will amplify the designer's work and maximise exposure in the media, giving projects relevance and visibility.

C·Top Design was created as a publication vehicle for activities and exclusive events for the design community, through our Cosentino Cities.

→ Cosentino® City Barcelona / Atelier LAB

C·Top Design intends to be an exposure platform for top designers and a valuable resource to foster collaboration and propel our connection with the world of design.

C·Top Design englobes a wide range of benefits, including exclusive bonuses, personalised digital services, and assistance from our specialised teams.



Cosentino®’s Digital Universe

We created a digital universe integrating two platforms that give designers access to services, inspiration, exposure, and generate demand among end consumers.

→ pro.cosentino.com

pro.cosentino.com

pro.cosentino.com is a digital platform with multiple services and advantages to be closer to you and honour your work.

At Cosentino®, we want to be an ally in the world of design, be close to designers in their work dynamic and assist them in the diverse needs their creative tasks demand.

With this objective in mind, we launched Cosentino® Pro: a digital platform that makes designers’ day-to-day life, easier.



Request Samples 24/7

Request samples and product novelties in a simple and agile way. Anywhere in the world, available to you in 48 hours.



Resources and documentation

A complete downloadable repository of files and technical documentation.



Inspiration

Ideas and creative proposals to join you in your interior design projects.



Sales percentage bonus

Discounts and exclusive bonuses for specifying Cosentino® products.



Price calculator

Calculate prices in a simple and intuitive way.

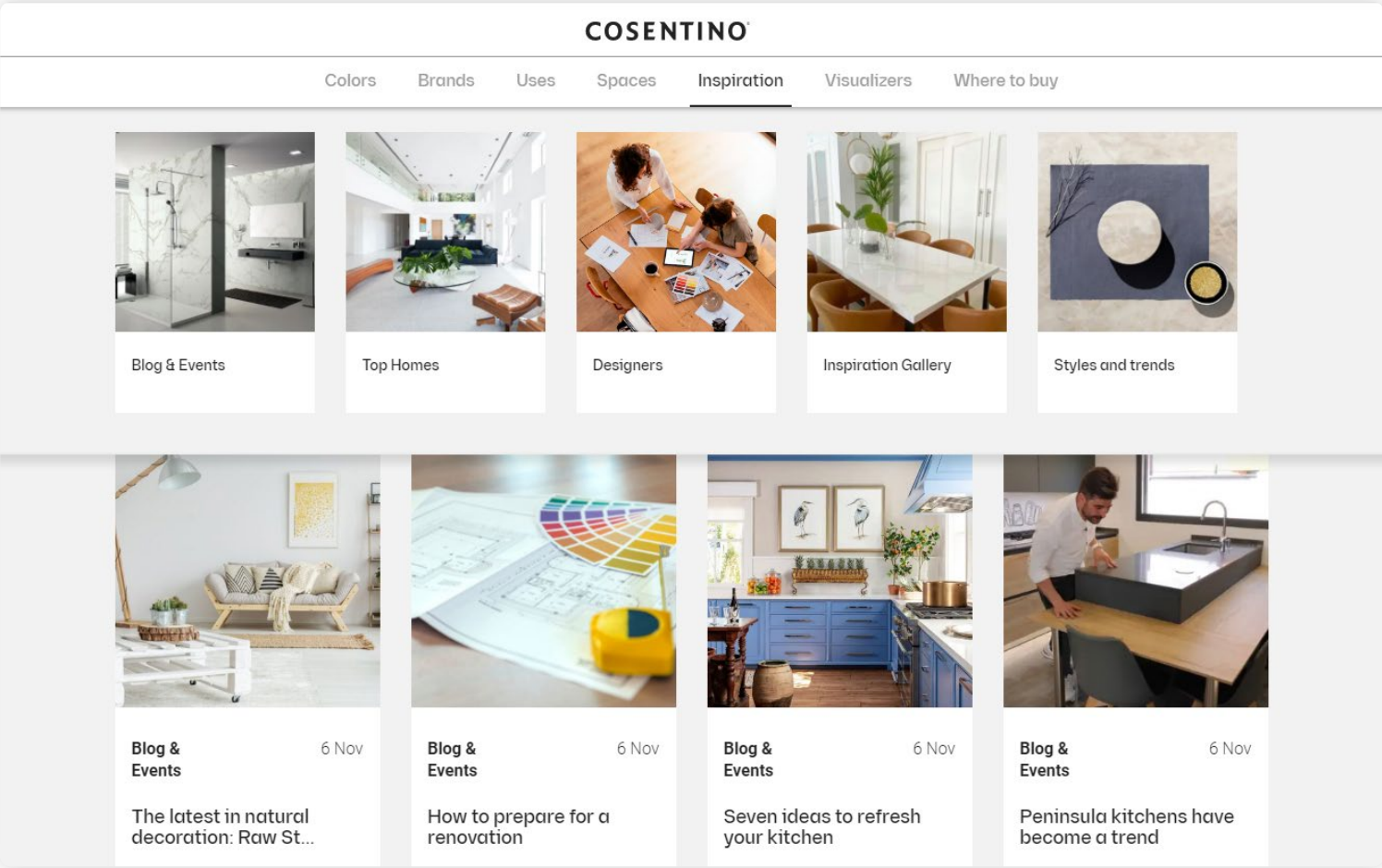


Expert commercial advice

Pricing counselling and support which you can share with your clients.

cosentino.com

Cosentino.com is our digital platform to inspire through interior design projects and maximise visibility for our designers, generating demand among end users.



Interiors

Representative projects of the interior design work created by C-Top Design



Top Design

Interviews with C-Top Design with a personal and introspective focus about their creative process.



Inspiration

Photo gallery with a comprehensive vision of Cosentino® products in interior design projects.



Style and Trends

The most buzzing styles and trends in interior spaces.

Here & Now

→ Cosentino® City Sydney / Atelier LAB



Get inspired

COSENTINO CITY

Cosentino® City

Live the Cosentino® DNA with a multifunctional space to create connections.

Cosentino® puts at your disposal the network of Cosentino Cities in over a dozen cities across the world. They were created as meeting places for inspiration and creativity, for interior designers and architects to find everything they need from Cosentino®

In our design and inspiration showrooms you will have access to:

→ Cosentino® City Barcelona



→ Cosentino® City Amsterdam



Personalised Visits

Arrange visits and meetings with your customers to show them Cosentino's innovative surfaces and products in a unique space.



New Digital Services

Use our augmented reality digital services to help your clients visualise their projects. Achieve greater impact in your clients when showcasing tour designs.



Experience Zones

A space to experiment with materials, textures, and surface patterns, combining them to create new design possibilities at our Atelier Lab.



Expert Advice

Finding the right design solution for any type of application, through experimentation and combination of Cosentino®'s most innovative brands, such as Silestone®, Dekton® and Sensa by Cosentino®.



Events and Speakers

Learn and be inspired by our continuous programs of activities, speakers, and encounters with media specialising on design, architecture, culture, and creativity.

Our showrooms across five continents

- LOS ANGELES
- MANHATTAN
- MIAMI
- SAN FRANCISCO
- MONTREAL
- TORONTO
- BARCELONA
- MADRID
- LONDON
- MILANO
- SINGAPORE
- SYDNEY
- DUBAI
- AMSTERDAM
- PARIS
- MALLORCA
- STOCKHOLM
- TEL AVIV
- TOKYO



Digital Slab.

Cosentino® Digital Slab allows the visualisation of all Cosentino products in a giant 4K 80" vertical screen.

This way, you'll be able to see the product closely resembling their original format and visualise hundreds of slabs with the swipe of a finger.

An amazing tool to experience the potential of Cosentino® products.



Atelier Lab.

A space to experiment with materials, textures, and surface patterns, combining them to create new design possibilities.

→ Cosentino® City Barcelona



Exhibition of facade system.

In our Cities you will experience a selection of the most interesting facades and buildings created by prestigious architects.

The fixation system and projects details can be explored through an interactive screen.

Your project. Everywhere.

Project Exposure

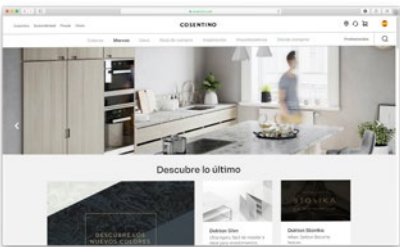
Cosentino® wants designers’ creative efforts and ideas to have maximum exposure.

We have created different content exposure channels in the world of design, generating prestige and reach:



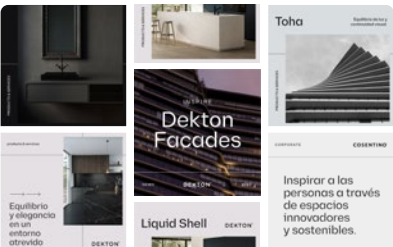
C·Top Magazine

C.Top Magazine is our design and trends magazine and the creative vehicle for the program. Here, you will find themes related to the design world, interviews with designers, highlighted projects, and inspiring case studies. And, of course, the goal is to have your projects among its 150 pages, which will also be distributed digitally.



Cosentino.com

Cosentino’s web portal features content destined to inspire consumers and designers with a monthly reach of millions of users globally. Through our “Interiors” section, we give visibility to the most relevant interior projects.



Social Media

We will maximise exposure of iconic projects through our social media channels, creating a deeper connection with users and design professionals.

→ C·Top Magazine





Corporate purpose

Inspiring people
through innovative
and sustainable
spaces.

Mission

Leading company that, responsibly, imagines and anticipates with its customers innovative surfaces of high value for the world of architecture and design.

Vision

To lead the global surfacing market through the action of its brands with innovative architectural solutions that provide design, value and inspire the lives of our customers.

We are Cosentino®

Certifications

Cosentino® is deeply committed to exceeding the needs of our customers and suppliers with respect for the environment through responsible resource management, guaranteeing innovation and continuous improvement of our processes, products, and services globally.

Cosentino®

- ISO 9001
- ISO 14001
- ISO 20400
- ISO 45001
- ISO 50001
- UNE 15896
- Leed and Breeam credits in Silestone®, Dekton® and Sensa by Cosentino®.
- CSR (verified by KPMG) based on GRI - Global Reporting Initiative.

Silestone®

- Declare Label
- EPD (Envirodec)
- VOC (UL) Greenguard and Gold.
- VOC (Eurofins) A+
- Kosher - Countertops
- Food contact (NSF) All food contact types - Countertops
- DoC (Declaration of Conformity) in accordance with Regulations 1935/2004/EC, 2023/2006/EC, 10/2011/EU.
- DoC (Declaration of Conformity) according to EN 15285, EN 15286 - Floors and coverings.

3D

- DoC Integrity (Declaration of Conformity) in accordance with EN 13310 - Sinks.

Dekton®

- Declare Label
- DGNB Label
- EPD (Envirodec)
- VOC (UL) Greenguard and Gold.
- VOC (Eurofins) A+
- Chemical Spot Test (SEFA)
- Fire Safety Certification APF-1525 (Applus) based on ISO 1716
- Combustibility Test (CSIRO) based onn AS 1530.1
- Fire Euroclass A1 (Tecnalia) based on 13501-1
- Burning Characteristics (QAI) based on ASTM E84-15b
- DoC (Declaration of Conformity) in accordance with EN 14411 Annex G - Floors and coverings.
- DoC (Declaration of Conformity) in accordance with European directive 2014/90/EU - Boats.
- DoC (Declaration of Conformity) according to ETAG 034 Article 66.3 - Façades
- ETA 14/0413 - Ventilated facades.
- BBA 16/5346 - Ventilated façades
- NOA 19-0227.02 - Ventilated facades.
- Seismic Test Report T1601 (NCREE)
- Kosher - Countertops
- IMO Module B 50171/A2 MED according to marine equipment Directive 2014/90/EU - boats
- IMO Module D SMS.MED2.D/109819/A.0 according to marine equipment Directive 2014/90/EU - boats
- USCG Module B 164.117 / EC2690 - boats
- Fire Test NFPA 285 (Tecnalia)
- CoC Civil Defence Certificate - Ventilated facades.

Bathroom Colletion

Sinks

- DoC (Declaration of Conformity) in accordance with EN 14688.
- CSA/IAPMO TJ5065 (QAI) based on CSA B45.5-17 / IAPMO Z124

Shower Trays

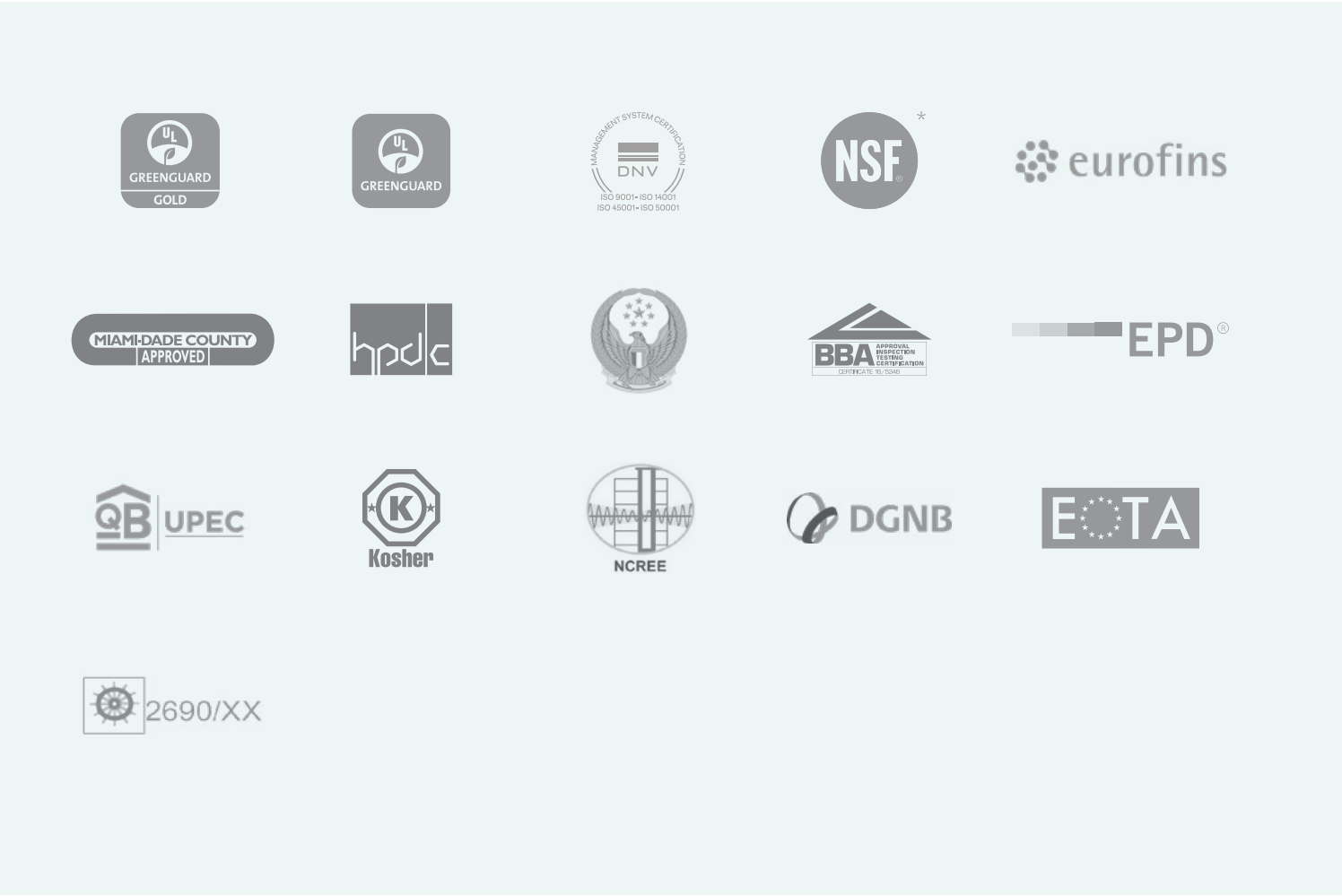
- DoC (Declaration of Conformity) in accordance with EN 14527.
- Slip-Resistant TJ5148-2 (QAI) based ASTM F462
- CSA/IAPMO TJ5148-1 (QAI) based on CSA B45.5-11 / IAPMO Z124

Sensa by Cosentino®

- VOC (UL) Greenguard and Gold.

Natural Stone by Cosentino®

- DoC (Declaration of Conformity) according to EN 1341, EN 1469, EN 12057, EN 12058 - Floors and coverings.



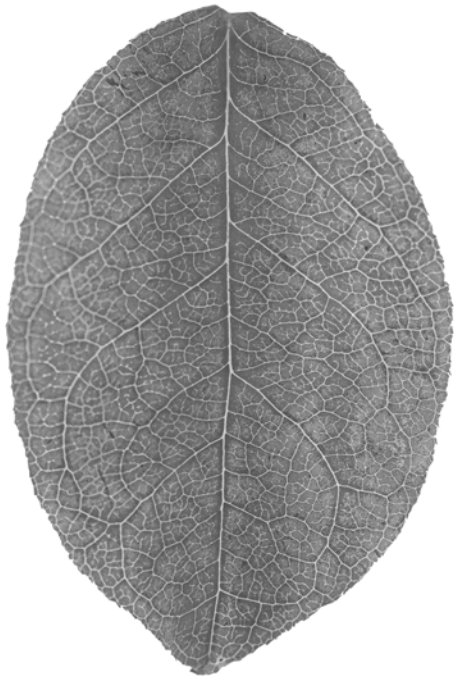
* To obtain more information about hues with NSF certificate please visit www.nsf.org

Sustainability Cosentino®

At Cosentino®, we approach sustainability as a collective commitment that stems from the individual involvement of those that are a part of Cosentino®.

Our continuous improvement efforts involve constant analysis of our entire value chain - from the acquisition of raw materials to the delivery of the final product of consumers.

We are firmly aligned with the United Nations' 2030 Agenda. As a global leader in the manufacturing and distribution of innovative surfaces from our headquarters in Almeria Spain, we are committed to driving the path towards local and global sustainability.



→ Olives in Cosentino® industrial park.



→ LED lighting throughout the Cosentino® industrial park.



Energy

Energy efficiency and the use of renewable energy sources are the two key elements of our strategy to minimise the impact of our activities.

100% of our energy consumption comes from renewable energy sources. Additionally, for 2022 we aspire to reach 30% energy self-consumption.

On the other hand, the constant improvement of our processes and machinery allows us to reach a high level of energy efficiency, which translates in an 8% decrease of our electrical consumption in our production processes.

→ Photovoltaic installations at Cosentino®



Water

Since our inception, we have valued the importance and understood the challenges of proper water management.

It has motivated us to implement a sustainable use policy maximising the efficient use of water resources in the different production processes.

We use cutting-edge technology to achieve 99% recycled water in all our processes in the Cosentino Industrial Park.

In addition, we use 100% of the surplus water to irrigate green areas.



Materials

We are committed to making the most of the materials we work with throughout the value chain.

In recent years we embarked on an ambitious R&D project called “Circularity” to reuse the materials from which we make our products.

Another action is the disruptive HybriQ+ technology that brings about the new generation of Silestone. HybriQ+ incorporates a minimum of 20% recycled materials and is manufactured with 100% renewable energy and 98% recycled water.

Carbon neutrality: Sustainable design



Cosentino® Group considers sustainable development as an essential commitment in the company’s growth strategy, with regard to the respect and protection of the environment.

We address aspects related to the efficient use of natural resources, proper waste management, atmospheric emissions, discharges and other potential impacts in order to make sustainable use of natural resources and protect biodiversity and ecosystems.

As a demonstration of our commitment, we have managed to offset the 42,532 tonnes of CO₂ emissions resulting from one year of Dekton® production, thus obtaining the Footprint Cradle-to-Grave Labels for the entire product life cycle in 2019 for all Dekton® brand products.

At Cosentino® we are strongly committed to the 2030 Agenda promoted by the United Nations and the Local Action Plan promoted by the Spanish Government.

In addition, the Sunlit Days series by Silestone® is the brand’s first collection to achieve this certification.



We reduce our impact

We are committed to energy efficiency, emissions reduction and sustainable mobility to minimise our impact.

- **Energy efficiency:** it is a priority objective for Cosentino® to reduce energy consumption in the production process and in the general group activity, which is why we have managed to obtain 100% of the electricity we use from renewable sources.
- **Emission reduction:** 2.8 million euros have been invested in the implementation of an energy management and monitoring system for the heat systems, which allows heat from the Dekton® furnaces to be recovered and used in the dryers, thus reducing emissions.
- **Sustainable mobility:** we have recently joined the ‘Plan Sumamos Salud + Economía’ under which we have a Mobility Policy that helped us to avoid 230 TCO₂ in 2018.



We calculate our carbon footprint

It is an external body that verifies the calculation and the results of the carbon footprint that are submitted to the Spanish Ministry for Ecological Transition and Demographic Challenge (MITECO, in Spanish), which is responsible for approving and registering our Footprint, becoming part of the ‘**Spanish registry of carbon footprint, offsetting and carbon dioxide absorption projects**’ of the Spanish Climate Change Office (OECC, in Spanish), whose results are made public as an exercise in transparency.

This calculation uses energy and/or fuel consumption data, as well as raw material consumption data collected from all **Group subsidiaries** (Centres, Workshops, Cities, HUBs, HQ, etc.) with a view to offset these emissions.



We offset our emissions

To achieve carbon neutrality in Dekton®, at Cosentino **we offset our emissions over the entire product life cycle** (scopes 1+2+3) by investing in GHG emission reduction projects.

For this purpose, we identify those projects that meet the requirements for responsible offsetting and that, in turn, have a strong social dimension that contribute to the achievement of the **Sustainable Development Goals of the UN’s 2030 Agenda**.

The project selected to offset the 42,532 tonnes of CO₂ emissions, resulting from one year of Dekton® production, has a direct impact on sustainable development by **supporting the local economy, providing training and job opportunities**.

Dekton®

by Cosentino®

Innovation applied to design

Dekton® is a sophisticated blend of more than 20 minerals extracted from nature. Its production process is the result of years of learning and inspiration in the manufacture of glass, state-of-the-art porcelain and quartz surfaces.

Electron microscopy makes it possible to appreciate the reduced porosity of the material, a consequence of the sintering and ultracompaction process exclusive to Dekton®. This reduced porosity and the absence of micro-defects causing stresses or weak points are the distinguishing feature of Dekton®.

25
Year
Warranty
DEKTON®

DEKTON®
Designed by COSENTINO



Sintered Particle Technology

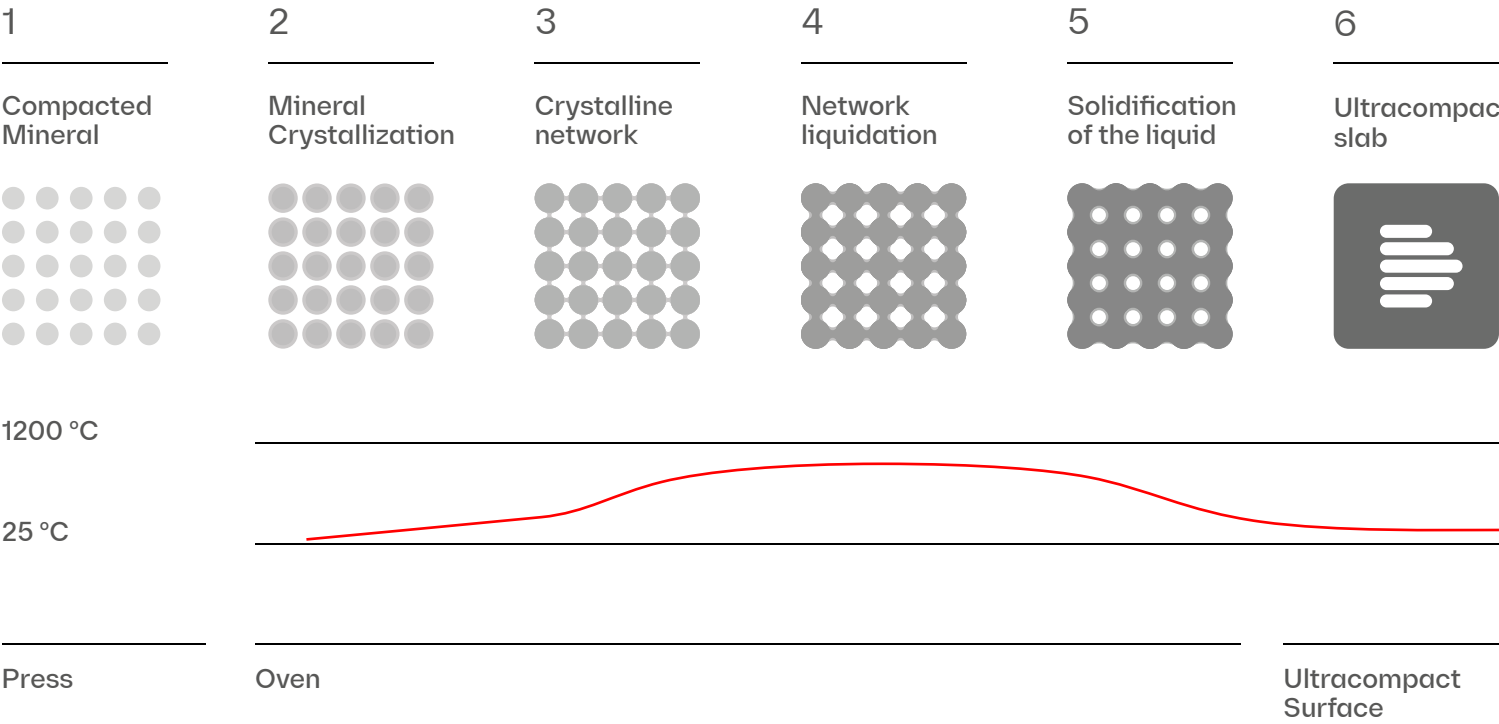
Dekton® uses an exclusive SPT in its manufacturing, capable of sintering mineral particles, bonding them together and compacting their internal structure. This innovative technological process mimics and accelerates the processes that natural stone undergoes when exposed to high pressures and temperatures for millennia.

Dekton® emulates in a few hours what nature takes millennia to do, thanks to the exclusive SPT technology.

- The furnace has a length of 180 metres (196 yards).
- Temperatures reach approximately 1250°C (2300°F).
- Total processing time depends on the thickness of the slab (about 4 hours).

Safety in facades and cladding

In order to reinforce safety in ventilated facades and interior cladding, there is the possibility of adhering a safety mesh behind the Dekton® slab, specially developed to prevent falls due to breakage. It is a 300 g/m² fiberglass mesh adhered to the material with epoxy resin. Safety is one of Cosentino®'s main concerns.



Dekton®
Product features

Dekton® meets all the technical specifications required in a high-resistance surface to materialise any interior and exterior residential design project.



Low water absorption

The water absorption of Dekton® is negligible; therefore, it does not undergo expansion movements.



Fireproof material

Dekton® can withstand the highest temperatures without burning, charring, or cracking. The standar European tests EN 13501 y ASTM E84 qualify the ultracompact surface as non-combustible.



Dimensional stability

The expansion of Dekton® is minimal: the panels can be installed with thin joints. These joints will retain their width under all conditions.



Maximum fire and heat resistance

Dekton® has been successfully installed in facades located in areas exposed to high temperatures.



High resistance to UV rays

Dekton® is highly resistant to ultraviolet light (UV rays) and will not fade or degrade over time in any outdoor application.



Durable Colour

The control of pigmentation and decoration in the manufacture of Dekton® gives the material better colour uniformity for each slab, resulting in a long-lasting product that does not fade over time.



Freeze and thaw resistance

The resistance that Dekton® has demonstrated in durability tests under freezing and thawing situations in various conditions proves its high performance.



Easy cleaning and minimal maintenance

It is easy to remove Dekton® graffiti with standard cleaning products. Reduced maintenance costs.



Superior mechanical strength

The wide variety of Dekton® thicknesses allows its use in applications where a high wind or impact resistance are a requirement of the project.



Resistant to scratches

Dekton® is one of the most scratch resistant surfaces on the market today. It has a rating of seven (7/10) on the Mohs scale of mineral hardness.



Abrasion resistance

Dekton® is even more resistant to abrasion than granite and porcelain, being the ideal surface for facades or floors subjected to high activity in commercial applications.



Resistance to stains

Dekton® is a material that is resistant to stains from different sources so that they will not be permanent.

DEKTON® S L | M
Designed by COSENTINO

Dekton® Slim

High aesthetic value and performance in vertical cladding and furnishings.

Minimum Thickness of 4mm → Large Format & Performance

01 → Large format and minimum number of joints

Its large format of up to 3200 x 1440 mm covers large surfaces avoiding as much as possible the number of joints and therefore, dirt.

02 → Easy installation

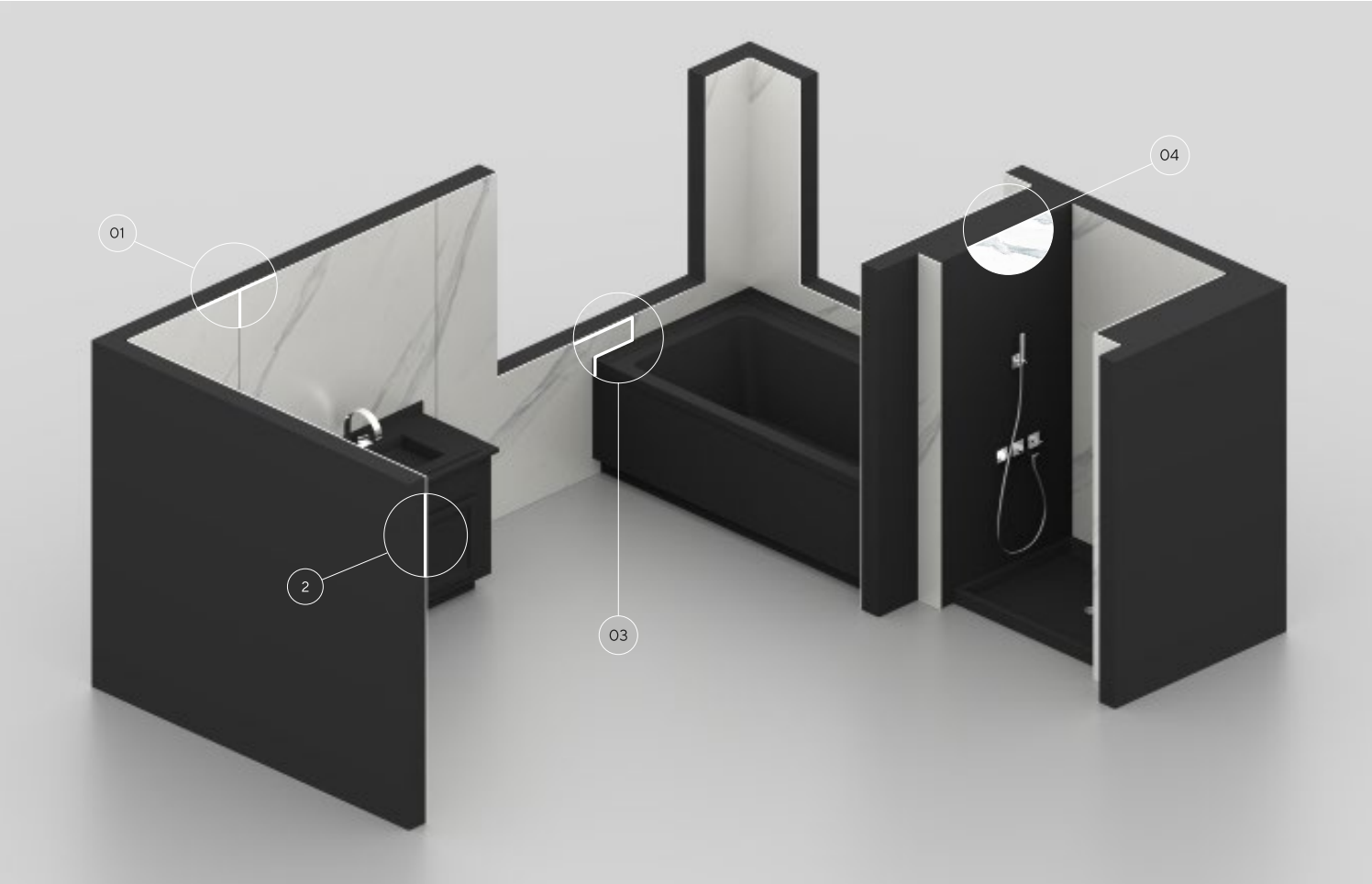
Having such a light format, but with so many possibilities, simplifies everything. Its thin thickness allows for quick cutting and on-site adjustments with ceramic tile tools.

03 → Design without limits

Dekton® Slim is very easy to work with and can be cut to size. It adapts to all spaces.

04 → Maximum resistance to humidity

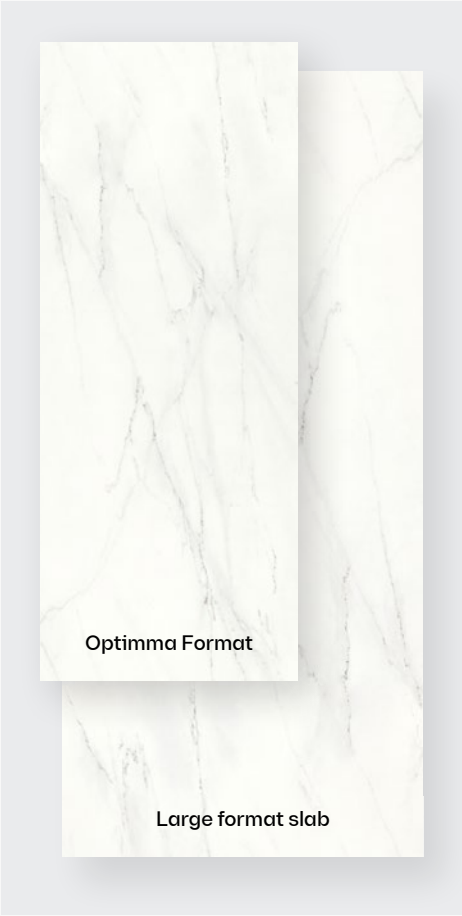
Dekton® Slim is the ideal ultra moisture and stain resistant coating for bathrooms. A high performance product that requires no more maintenance than a simple damp cloth.



Dekton® Formats

Adaptable and versatile.
In any space.

Dekton® offers a variety of standard sizes, custom sizes and thicknesses to meet the functional and creative needs of the designer in any interior or exterior project, no matter how complex.



Large format

Optimma Format → 260 x 100 cm
Large format slab → 320 x 144 cm



Other formats

- 106 x 71 cm
- 142 x 106 cm
- 142 x 142 cm
- 142 x 71 cm
- 142 x 79 cm
- 159 x 142 cm
- 159 x 71 cm
- 71 x 71 cm
- Tailor-made format



Thicknesses

- 0,4 cm
- 0,8 cm
- 1,2 cm
- 2 cm
- 3 cm

Dekton® textures

Different Sensations.
Richness of Shades.

Dekton® comes in different textures so that the only limit is the architect's or designer's imagination: from the finish ultra-glossy, to matte or velvety textured options.



X-Gloss

A luminous and dazzling finish achieved by mechanical polishing, without the need for enamels or other materials.



Matte

The matte texture pursues a natural, shine-free appearance, ideal for achieving a harmonious and timeless finish. Most Dekton® products are manufactured with this finish.



Velvet

Velvet is Dekton®'s velvety texture. The materials chosen in Velvet create a feeling of warmth and comfort. This texture is perfect in classic colours, with veins.



Matte or Textured Velvet

Matte or Textured Velvet textures combine the warmth of velvet with the roughness of a textured, imperfect material. It is ideal for emulating the finish of natural stone.

Optimma

New optimised Dekton® format.

The ultimate interior cladding solution.

The Dekton® slab has been optimised with its most common applications in mind to create a new format with improved cost, design, installation and handling. Introducing our first Optimma family format specifically for cladding: Optimma format 260 x 100 x 0.4 cm.



260x 100 cm
in 4 mm thickness

The slabs are created in 4mm thickness, which gives it a lightness that allows easy handling, and in case of need, it can be easily cut to adapt the product to all spaces.



Cost Efficiency

The sizes were optimised to the most common coating standards, this allows us to avoid waste, which in turn reduces price.



Design with Purpose

The board has been created to take advantage of its total height, which makes it much easier to cut it for cladding.



Easy to Install

The product is smaller and lighter, which makes it easier to use transport and handling. Cutting can be done with simple tools. The edges are already bevelled and the piece is always meshed.



Design Match

The design has been conceived to place the boards vertically to create a continuous design.



New Kraftizen Collection

Today Dekton® pays tribute to the master craftsmen and the techniques they perfected over the centuries by creating a series of 5 versatile, beautiful and honest colours that are also durable and resistant over time with the new Kraftizen Collection.

Our challenge has been to reinterpret craftsmanship with digital craft technology. Both technique and technology are complementary and feed back, refining and inspiring each other.

In this creation process 2.0, an analogy in processes continues to emerge. The walls and trowel marks of yesteryear are transformed into canvases of millions of pixels, where tools and hands continue to shape beauty. Each trowel stroke, each twist of the wrist becomes part of an image, of a reinterpretation with no expiry date.

We have created a refined technique through technology creating a durable surface that delights the five senses through textures and volumes, silky and extra matt colours that will clad floors, walls, tables, countertops and any timeless space capable of inspiring people.



Albarium

Albarium is a peaceful, powdery white that refers directly to the primary element of this colour: marble dust. The subtle trowel marks overlap, achieving a rich continuity that makes it easy to apply on large surfaces. Albarium captivates with its fine, elegant texture and the refinement and light it brings to the spaces where it is used.



Argentium

In ancient times, silver was considered a gift of nature created by the influence of the moon. This legend lives on in Argentium, a perfect matt grey that can be combined with both warm and cold atmospheres. Its trowelled structure, typical of lime plastering, provides an overwhelming personality to the series.





Umber

Umber is the timeless, rebellious red-haired girl or boy. That kind of colour with its own personality, with a special charisma. Very attached to the earth, to nature, with a supernatural strength.

Terracotta is warm and cosy and has a very close connection to nature.



Nacre

Nacre is colour in movement. All the senses ask to be part of it. The trowel marks that bring the colour to life, the subtle interplay of light and shadow that accompanies every inch of the design. The touch delights with a silky finish as the fingers run over the different reliefs and scattered gradients. A pleasure for its high decorative and emotional value. It takes us to the touch of mother-of-pearl, to the sound of sea waves on another plane.



Micron

Micron is elegant and restrained. Its markings make it a living, breathing material in its trowelled texture. This deep, dark grey conveys a comforting sense of calm, as if wisdom and serenity could be metaphorically welcoming.



New Onirika Collection

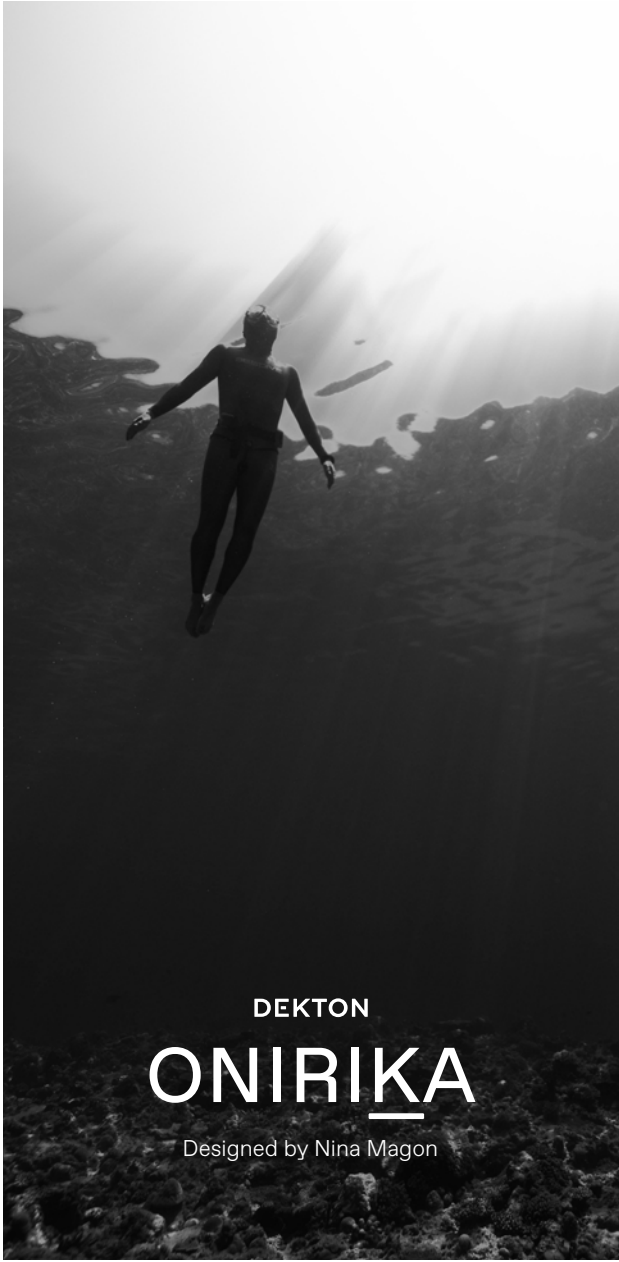


Imagine sitting in a world of beauty, that blurs the division between reality and dreams.

Nina Magon Studio, is a luxury design studio where architecture, interior design, and construction blend seamlessly to deliver the world's most exclusive residences, culinary, hotel and spa and special commission experiences. The forward - thinking ethos of the brand is coupled with exceptional service, custom ideations and experiences for each of our clients, as we believe luxury is not just elemental but also in the minutiae of who we are as a brand. Uncompromisingly high standards are held and delivered whilst creating exquisitely luxurious spaces, through experiential, one of a kind designs, that we tailor to our clients' needs, wants and wildest imagination.

Onirika represents a journey. A detour in our dreams where boundaries between dreams and reality vanish.

A collection that unites the poetic and unique beauty of stones harnessed by Dekton® technology, as those dreams where we observe and vaguely feel in control but only the deepest part of our mind truly understands. The collection is named in honor of the lavish inspiration of the two worlds conveyed in marbled colors to captivate our eyes and bring to any space a feeling we understand but cannot explain.



Neural

Fine and pale veins crisscross the marbled pattern creating a fascinating neural network that moves in the same direction, teleporting us into a white dream.

Its perfection is so subtle, yet so present, that it creates a notch in our memory. It does so when placed in a space where it unfolds the perfect white harmony that creates a pristine structured arrangement with wooden, metal or shiny elements



Awake

Our awake dream unifies consciousness and fantasy, delivering Dekton's unique take on a Bionde Paonazzo. An ode to luxury and elegance, to control and nature. A design for daydreaming.

A re-interpretation of the iconic attributes of the precious Paonazzo stone. Thick veins of light grays and creams, with an exquisite oxid terracotta and subtle inky blues. The perfect centerpiece blends with white, nude tones, light woods and golds of any shade.

Trance

Trance invites you to abandon control of your thoughts, to let yourself be carried away by the beauty and liveliness of the veins that carry energy and bring life to spaces.

Warm fine streaks move between oxides and fade to reddish gold. This color is the perfect complement for reddish oak woods and darker walnut tones. The hint of blue in the stone accompanied with its warm golds makes it the perfect fit for any environment.



Somnia

The eye gets lost and dazed while chasing these streaks and entering an altered state of mind. Its effect creates a sober and delightful space that invites golden, wooden, metallic and copper elements to shine in it, while embracing everything in an immersive calmness.

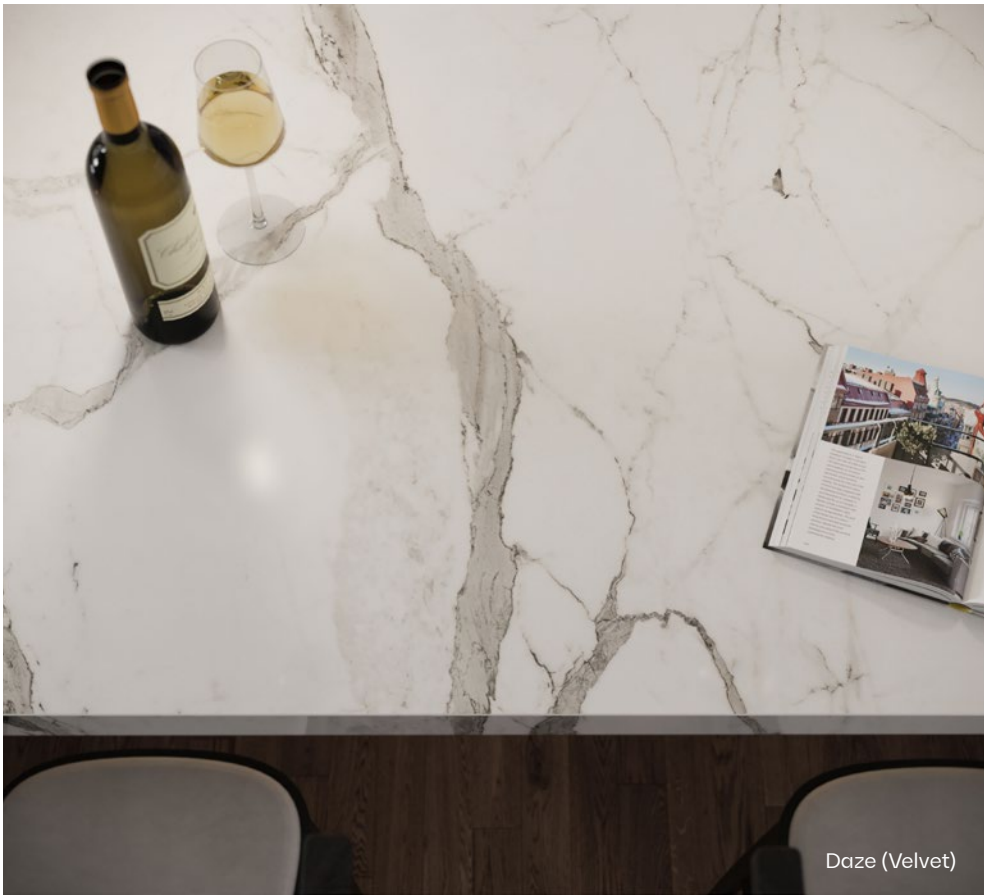
Captivating details of warm oxid browns and whites merge under a grid of thin lines creating a sober texture. Perfectly paired with warm dark woods frosted glass and textured metal surfaces as copper.







Morpheus (Velvet)



Daze (Velvet)



Vigil & Daze

Vigil and Daze are a chess game with circadian rhythms. A dance between being awake and asleep. A feeling of intoxication surprised by the energy of an adrenaline rush.

Both designs recreate a strong Calacatta structure with thick veins in gradients of light and dark grays matched with a subtle touch of gold. A classic pattern easy to combine with warm and cold hues, wood metal, and clean concrete.

Lucid & Morpheus

Lucid and Morpheus feature various shades, reflections, and glints of color. This illuminative perception of colors goes beautifully with wooden finishes and frosted glass paired with gray and gold tones.

A dream of Calacatta in full consciousness, takes control of the swirls, veins and patterns that dance across the design.

It results in a paradox of wildness and control that blends in with soft warm tones and materials bringing a feeling of harmonic dynamism to the room, especially when book matched, reminiscent of Rorschach.

Lucid is clear and sharp, taking over our thoughts and opening the door to Morpheus, Nina Magon's matte dream.



Lucid (Polished)



Vigil (Polished)



Silestone®

by Cosentino®

The ultimate mineral
HybriQ surface.

Silestone® is a hybrid surface
of minerals and recycled
materials to dress interior
spaces with colour and texture.

Silestone® advantages.

Silestone® is extremely durable in kitchens, bathrooms and other spaces exposed to constant activity and use. In addition, it offers an unlimited range of colours and textures.

Silestone® has many advantages, including minimal maintenance, high resistance to stains and scratches, and a low fluid absorption rate. This resistance to fluids and its minimal joints make Silestone® the ideal solution for places where liquids are present. Silestone® is resistant and allows for prolonged enjoyment over time, beyond what is expected.

The properties of Silestone® are the result of constant years of innovation that guarantee maximum hygiene and safety.



Acid and Scratch Resistant

Silestone® has a high level of scratch and scuff resistance, impacts, as well as to external aggressions and acids common in daily kitchen use.

Impact Resistant

The high impact resistance of Silestone® allows the handling of hard objects (pots, pans, trays, etc.) with total peace of mind.

Stain Resistance

Silestone® is a non-porous surface that is highly resistant to stains from coffee, wine, lemon juice, oil, vinegar, makeup and many other everyday products.



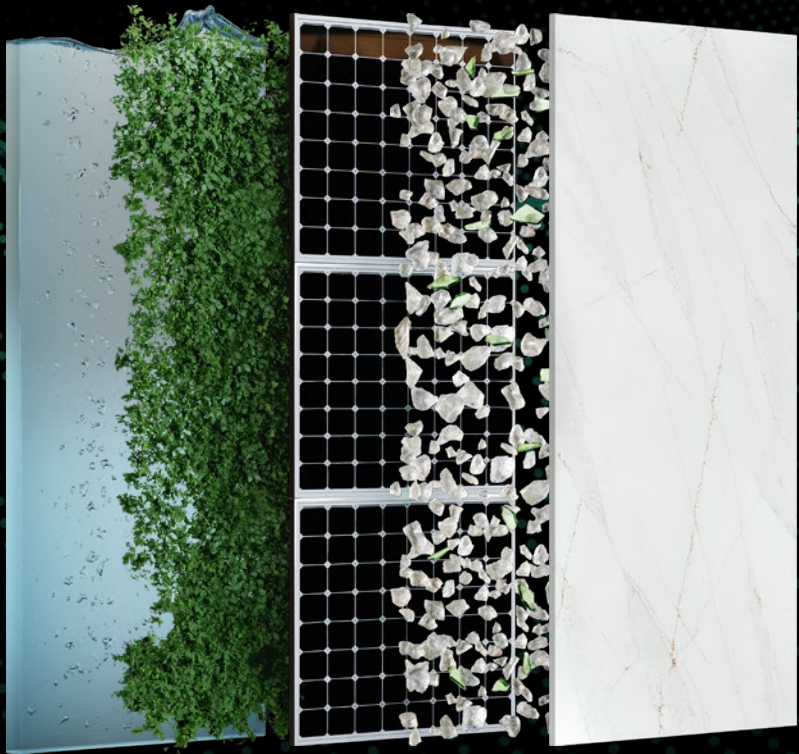
What is HybriQ+ Technology

HybriQ+ is a pioneering and patent registered technology from Cosentino developed for the manufacturing of the new Silestone.

A new high-performance blend of premium minerals and recycled materials produced through a sustainable manufacturing process, with 99% recycled water and electric energy from renewable sources.

HYBRIQ+
TECHNOLOGY®

Introducing the new Silestone® with HybriQ+ technology®



			
99%	100%	0%	Min 20%
Recycled Water	Renewable Electric Energy	Water Discharge	Recycled Materials

Check the availability of products with HybriQ or HybriQ+ technology at cosentino.com

Silestone® formats

Infinite possibilities for indoor applications.

Silestone® is available in slabs up to 325x159cm and in 30x30cm, 40x40cm, 60x60cm, 60x30cm and 60x40cm tiles. They are marketed in thicknesses of 1.2, 2 and 3cm. In addition, different pieces can be combined to simulate thicker edges.



Large format

Tablas Jumbo → 325 x 159 cm
Tablas Estándar → 306 x 140 cm

Jumbo Slabs

Cosentino® offers Silestone slabs in Jumbo format (325 x 159 cm max.). This format allows for the creation of large surfaces with minimal jointing, design versatility, and better hygiene. This way, the slabs' use is optimised and waste minimised.



Floor format

- 30 x 30 cm
- 40 x 40 cm
- 60 x 60 cm
- 60 x 30 cm
- 60 x 40 cm
- Tailor-made formats



Thicknesses

- 1.2 cm
- 2 cm
- 3 cm
- Customised thicknesses by adding different pieces together

Silestone® textures

Surface sensory perception.

In order to adapt to all styles, Silestone® offers different textures for any of its applications. Polished, Suede or Volcano are three possibilities that create your imagination fly and have the countertops, floors or walls with the texture you have always wanted.



Polished

Extreme shine, a smooth surface to the touch and a uniform, intense and consistent colour.



Suede

Extra matte finish, offers a flat, non-rugged surface, which conveys a unique experience to the touch for its beauty and fineness.



Volcano

Rustic texture, rough to the touch, but soft at the same time, an attractive and pleasant to the touch surface

New Sunlit Days Collection

We present the first Silestone® Carbon Neutral collection, a commitment to sustainability where we reduce and offset the emissions from the manufacturing process with reforestation projects. This environmental commitment translates into a collaborative program for the preservation of the seabed and our environment.

Sunlit Days. An immersive and sensory journey through light and colour that takes us back to our roots and transports us to a more natural, more sustainable and more compassionate future.

Sunlit Days is inspired by evocative Mediterranean tones, and a unique lifestyle.

A new breath. A new spirit. A new Silestone®.

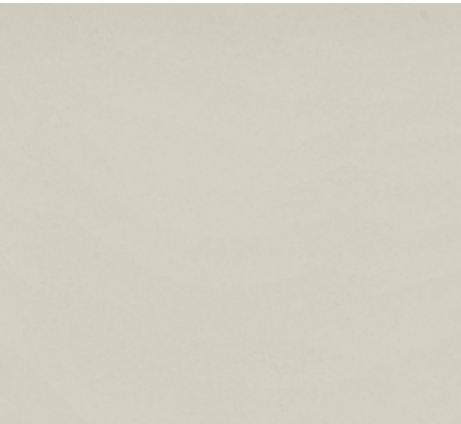


Faro White

White is the colour of our Mediterranean. The one that draws the waves on its shore. The one that reflects its light and evokes its warmth. White represents purity par excellence, and more than any other colour, it transmits serenity. It is the colour of simplicity, and yet, the most complex and versatile of all colours. Just like its texture, which is surprisingly silky to the touch, every time you lay your hands on it.

Faro White is inspired by the lighthouses that draw the way for ships, it will fill your space with light and sea, for people who love life.

Faro White is the sparkle that brings us closer to what really matters: our people.



Faro White pairs well with natural fibres and aged woods, raffia and metals with matte finishes.

It is a good match for decorative elements of pure and curved lines, giving rise to spaces stripped of ornamentation that convey calm and purity.

Cincel Grey

Some people say that grey is just grey. Those people will speak of wood as just that, wood. They will not speak of ebony, almost jet, nor of crimson mahogany. Because wood is not just wood, nor is grey just grey.

Cincel Grey is a fine-grained grey, silky and full of nuances. A grey that when bathed in light unfolds its melody of contrasts between matte, sheen and reminiscent of other colours. It is a grey for those who know how to look and feel.

Its touch, like the rest of the colours in the series, is a sensory experience even for the hands most accustomed to delighting in the textures of each wood.



Posidonia Green

Under the Mediterranean, time stands still. Everything is slowness and harmony. The posidonia meadows sway, dancing a hypnotising dance of incredible greens. Greens that captivate the eye and that both literally and metaphorically, fill the seabed with life.

This is Posidonia Green. A green that asks for colours around it and that transports this beauty so far inaccessible to our spaces. A green that infuses vitality, joy and nature on all four sides. A green that at every moment breathes a different melody of brightness and tones, just like the marine treasure that gives it its name.



Cincel Grey is a neutral, adaptable grey that balances easily between warm and cool tones. Therefore it complements polished metals and rustic finishes and combines very well with accents of earthy colours, and resistant fibres such as plush, felt and denim.

It is a perfect colour for everyday spaces paired with textiles and elements that pay tribute to minimalism.



Posidonia Green is the perfect match for woods such as bamboo, soft textures, fibres such as cotton or Lyocell, and twill-like structures which help to create these spaces.

Marbling, rustic, natural elements and monochromatic geometries are perfect options to complement this luminous green.



Cala Blue

The first time you see the sea and its breeze embraces you. The feeling of floating in the immensity. Away from worries, letting the sun and water bathe your skin. Savour the salt that envelops your body, the sound of the waves breaking on the shore, see the infinite horizon. A game for the five senses. A unique touch that caresses the skin just like the sea.

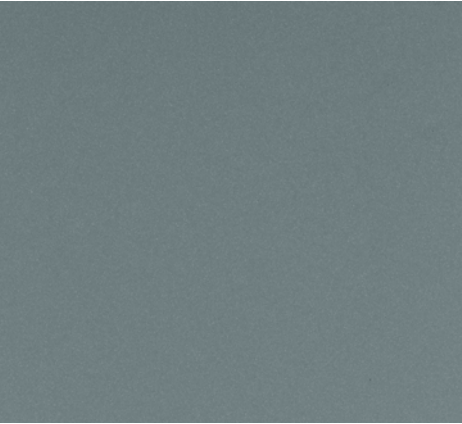
That is Cala Blue. A deep, modern blue that simulates the balance between the depth and the surface of the sea when interacting with light. A mature colour that vibrates with the rest of the elements that complement the space it inhabits. Let yourself be rocked by the Mediterranean.



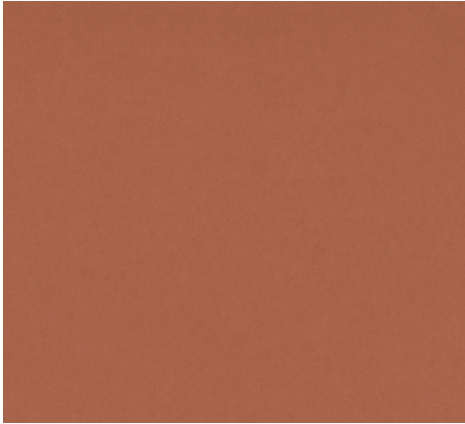
Arcilla Red

There is a land that breathes fire, that seems to flow blood, a land that is pure life. A land of clay, of an infinite red that displays intoxicating tones and fills you with warmth, life and joy.

This is Arcilla Red. A red that makes you fall in love. An earthy red that tastes like wine and smells like petrior. A red that brings the purest essence of our origins to our home. A burst of colour, an accent, a beating heart. A red that turns the kitchen into a living space that longs to be lived in. A colour that can be tasted with all five senses. A unique texture that can be enjoyed with both touch and sight. Arcilla Red comes to endow any space with this passion, this closeness to the earth, with pure life.



The versatility of Cala Blue allows combinations with dark woods such as walnut and ash, as well as with dark metals to give a more classic look. Paired with nude colours and woods, it is perfect for rustic spaces.



Arcilla Red pairs nicely with reddish woods such as oak or cedar as well as greyer woods like anthracite. Gun metal metals and handmade fabrics are perfect companions to create rustic and bohemian spaces.



→ Countertop & Backsplash Silestone® Posidonia Green



→ Countertop, Backsplash & Floor Silestone® Cala Blue



Sensa

by Cosentino®

Protected Natural Stone

Sensa by Cosentino® is premium maintenance-free natural stone brought to you by Cosentino, a world leader in the natural stone industry.

Sensa by Cosentino® is treated with a revolutionary stain protection treatment called SenGuard, and comes with a 15-year stain warranty.

SENSA
15
YEARS
WARRANTY

SENSA
by COSENTINO®



Sensa by Cosentino® Treatment

The long-lasting, chemically-integrating technology allows the material to breathe. This technology enhances its powerful properties.

The process alters the surface tension of the stone causing the material itself to prevent liquids such as water, coffee or oil from penetrating



SENSA
by COSENTINO®

Normal



Applications

Sensa kitchen countertops.
Natura, stain-proof beauty.

Enjoy the design, hardness and resistance of natural stone without fear of stains. Sensa by Cosentino® quartzites and granites feature a revolutionary stain-resistant treatment that protects them for the life of your countertop.

Textures

Unique shapes for
unrepeatable surfaces.

The colours and textures of Sensa by Cosentino® have the patient and whimsical design of nature. Each of the seven available shades has a texture that produces different effects and sensations: suede, polished or caresse.





→ 66

5.1
LIVING ROOMS

Redesign the living room and turn it into an open, functional, comfortable space integrated with the rest of the house.



→ 116

5.2
BATHROOMS

Reinvent the bathroom to create a world of sensations through a unique and integral design concept.



→ 188

5.3
EXTERIOR

Revolutionise the outdoor space so that the porch, terrace or garden becomes a continuation of the house.



→ 218

5.4
KITCHENS

Redefine the function of the kitchen in the home and transform it into the heart of the house.

Innovative surfaces that bring the designer's vision to life in the home, to reimagine interior and exterior spaces.

→ 278

5.5
FURNITURE

Rediscover the exclusivity of custom-designed furniture for every space.



Spaces

Living rooms

The living room is transformed into a personal and timeless space with Cosentino® surfaces; an expression of sophistication and functionality.



Enjoy your space

Rediscover your home’s living space

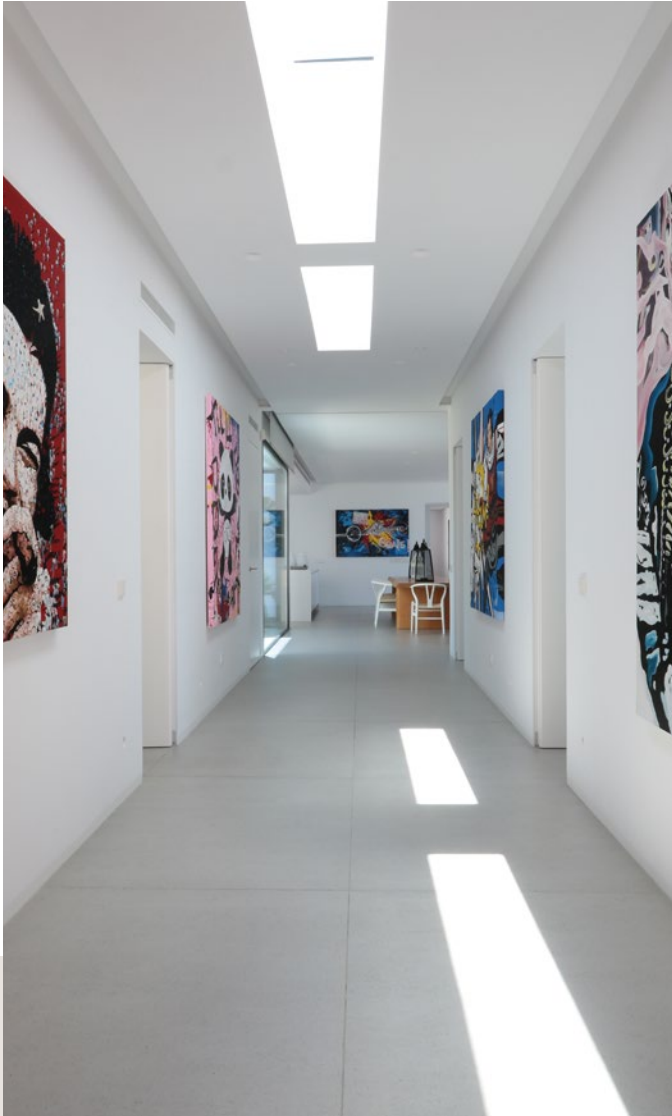
An integrated solution
with maximum versatility
and functionality.

Endless customisation
possibilities.



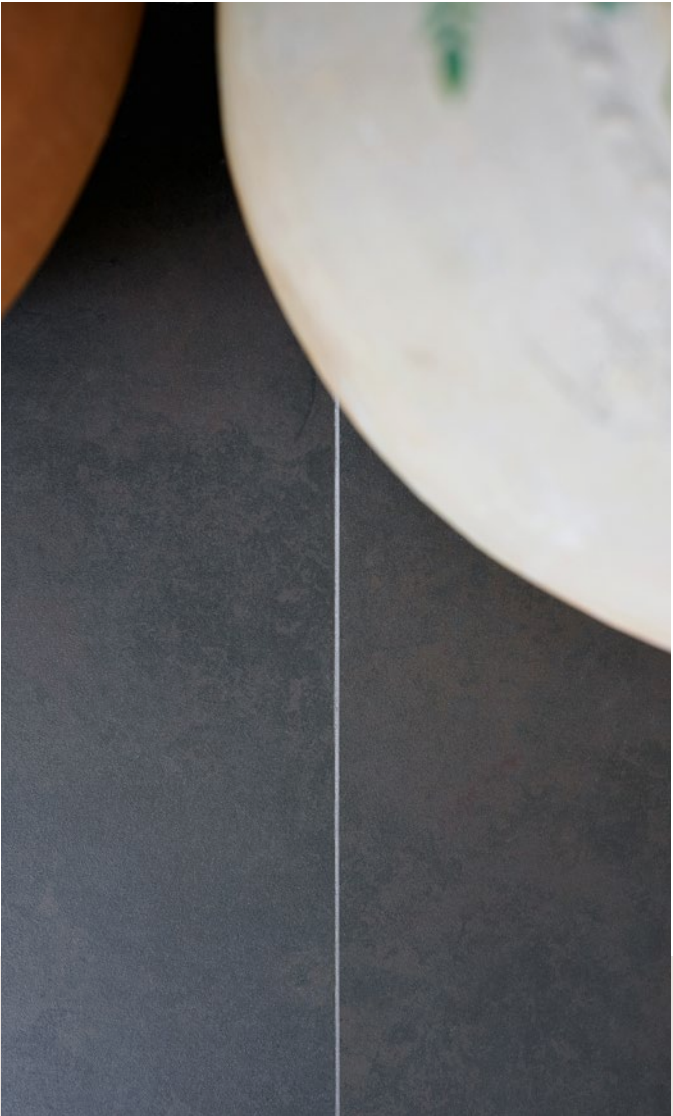
Limitless customisation

Designing a living room with high aesthetic value requires versatile surfaces in a variety of colours, textures, and unique chromatic pantones, such as Dekton® and Silestone®, which will cover floors, furnitures, cladding, and more, to create an integrated and differential interior design experience.



Resistance to high traffic

Dekton® is an innovative surface with a high level of resistance, capable of withstanding high temperatures, ultraviolet rays and any scratches. It remains unalterable to wear and abrasion, as a result of the high daily traffic in a room such as a living room.



Easy installation

Dekton® is offered in a Slim format which is light, easy to cut, and adaptable to every space. Its thin thickness of 4 mm allows adjustments to be made during installation, using tools for ceramic tiles.



Comprehensive solution

The same material for flooring, cladding, and furniture created visual continuity and high aesthetic impact, unifying spaces and increasing their functionality.



New Dekton® Optimma Format

Dekton® has been optimised for interior cladding. The Optimma format (2600 x 1000 x 4 mm) allows for cost efficiencies, more design possibilities and easy installation and manipulation. The results: impactful cladding and integrated spaces.



Large format, minimal joints

Dekton® Slim's large format up to 3200 x 1440 mm and thickness of 4 mm allows you to cover large surfaces creating a continuous and homogeneous aesthetic for cladding and furniture. This size reduces the number of joints, easing cleaning and maintenance.

Enjoy your space



01/ Living Space

Spaciousness,
brightness and
visual continuity.

**A single flooring material
for the whole house.**

Goal: to create an attractive continuous canvass, without joints, that adds visual unity and highlights the greenery and furniture of the space.

To achieve this, Silestone® Blanco Zeus, has been used, which provides continuity throughout the home. The walls and interior woodwork, also in the same white color, help to create a bright, calm and balanced space.

Architecture
Mariana Andersen and
Mariana Guardani

Photography
Maíra Acayaba



Continuous spaces all in the same material.

The pure white of the Silestone® flooring contrasts with the warmth of some of the wooden furniture, such as this sideboard and the dining table.

A clean, neutral background highlights the artwork in this loft and the greenery of the home. A beautiful yet practical solution that will stand the test of time.



Set of horizontal planes.

As this is an open-plan area with a split-level living room, the use of the same flooring material, combined with the appropriate use of glass, provides harmony and balance to the space.

→ Flooring
Silestone® White Zeus



02/ Living Space

High-rise city
apartment.

**A modern, functional
grey canvas.**

In this city apartment, the interior designer has opted for a light grey Dekton® Keon cladding in a large square format. The choice of this material is perfect for making the space look bigger and giving it visual continuity.

The grey flooring goes well with the industrial-style furniture and the fabrics of the sofa. All in all, a simple design that will stand the test of time.

—
Architecture
Cosentino®

Photography
Francisco Carrasco

→ Flooring
Dekton® Keon





Tropical wood on a large-format grey background.

The coldness of grey and white is balanced by subtle hints of reddish wood in the dining table and chairs, the floor lamp and the sofa legs.

The choice of Dekton® Keon flooring is perfect for this practical and stylish city apartment.



03/ Living Space

Warm, natural
shapes with a
white foundation.

Extra-gloss white.

In this kitchen, many of the fashionable elements, such as terracotta colours, curved shapes and wooden wall panelling, have been used to create a cosy and very personal space.

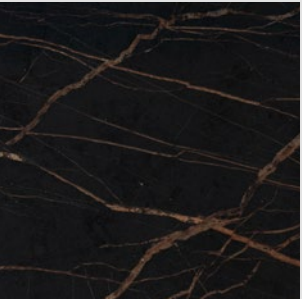
This organic and somewhat 'tropical' decorative style requires a light and soft foundation that creates a continuous surface, as if it were a large canvas. Dekton® Halo is the material used to achieve this effect. The Halo colour from the Solid Collection, with its XGloss finish, offers a luminous, crystalline shine that is perfect for highlighting the entire design project. In this case, it complements furniture with clean, functional lines, up to the ceiling and without handles.



→ Island kitchen,
Silestone® Iconic White



→ Countertop kitchen,
Dekton® Laurent



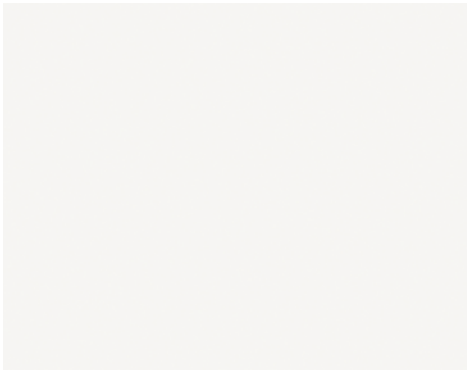
Countertop and bar perfectly combined.

The designer has chosen Silestone® Iconic White to clad this impressive island, creating an impressive totem effect, as if it were a large piece of marble. Contrasting with this is the overhanging bar in Dekton® Laurent, an interesting black material with clay-coloured veins that visually ‘engages’ with the wooden wall panelling and the leather chairs. Thus, the countertop and the bar blend perfectly together, each with its own identity.

Infinite surfaces.

The feeling of a continuous surface is achieved by using the same material for the floor as for the kitchen units. Dekton® Halo XGloss is once again present on the floors, in large format and with greater thickness: the luxury of being able to choose the same product for different applications.

→ Dekton® Halo XGloss



04/
Living
Space

Trendy blue
and grey.

Large format for an
impressive living room.

This magnificent living room is striking, first of all, because of the size of Dekton® Aeris floor tiles.

This large format continues with the wall cladding. In this project, the interior designer has chosen polished marble for the tops of the coffee and dining tables (see image below).

In short, a combination of materials and noble stones, in different finishes and textures (with and without shine), makes the home very stylish.

The colour is achieved by small hints of Klein blue in cushions and pictures.





Matte and shiny.

The designer chose the beautiful beige Dekton® Aeris for the flooring. The vertical cladding in the rest area is in shades of brown. So far, everything is fairly even and matte. In contrast to this, the top of the dining or study table is in shiny Dekton® Splendor from the Solid Collection.

→ Flooring
Dekton® Aeris





05/ Living Space

Large format for
living spaces.

**Functionality
and beauty.**

In this coastal home, the floor is a large surface area that provides a view of the sea. Simple, clean, practical and large-format material, **Dekton® Strato** provides a balanced urban character.

Easy to clean, virtually seamless and in a very neutral colour, this flooring is the ideal solution for a busy summer house that requires maximum resistance.

—
Architecture
Jano Blanc

Photography
Adrián Chambre



White countertop.

The **Silestone® White Zeus** countertop and the glossy white lacquered kitchen units are perfect for a coastal home – they provide brightness, cleanliness and tidiness.

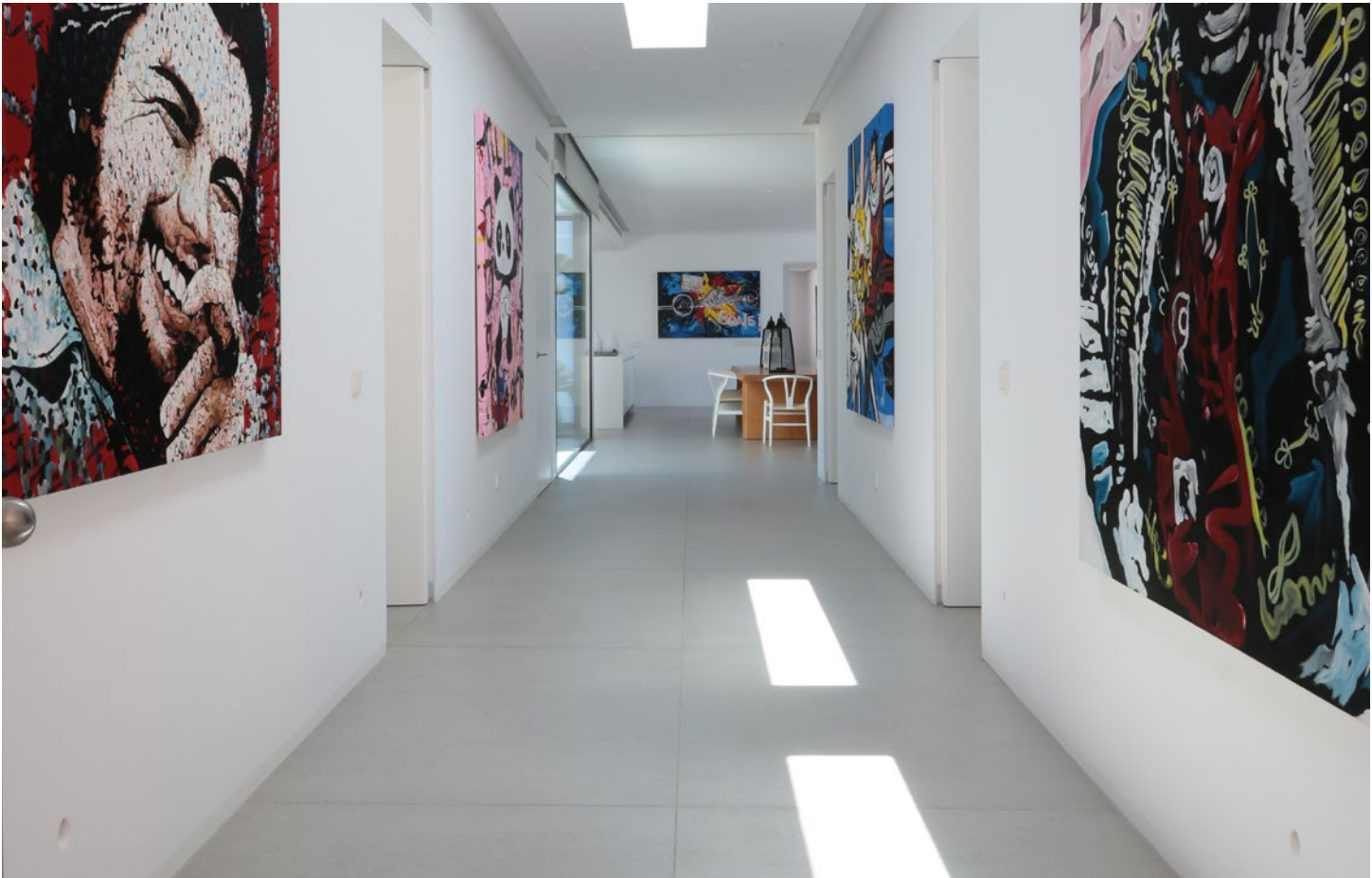
The Mediterranean white contrasts with the wooden floor and dining room. Artwork throughout the rest of the house adds colour and personality to the space.

It is a beautiful blank canvas that can be finished off with designer furniture and pictures.

→ Kitchen countertop
Silestone® White Zeus, Polished finish



→ Flooring
Dekton® Strato



06/
Living
Space

Materials with
character for an
eclectic home.

**Grey veining
is on trend.**

The vision for this very distinctive home was clear: the owner was looking for a vibrant material with uniqueness so that each piece would be different. Although large-format Dekton® Kreta slabs are used to create a continuous space, Dekton® Bergen was chosen for the countertop and the side cladding of the furniture, with its grey veining giving a sense of movement.

The same material can be found in the staircase and the skirting board, bringing together the different spaces.

—
Architecture
Muxacra Arquitectos

→ Flooring
Dekton® Kreta





Matte
texture.

Dekton® embraces a velvety texture. The matte finish provides a flat, non-rough surface, which conveys a unique soft and pleasant feel.



Large format Dekton® Bento is an ideal solution for flooring in open-plan spaces. It brings visual continuity, neatness and a neutral decoration to combine, as in this case, with wooden wall panelling or white lacquered interior woodwork.

→ Flooring
Dekton® Bento





07/
Living
Space

Sophistication
and mid-
century style.

**Dekton® Danae
throughout the home.**

For a classic look, the interior designer for this home opted for designer items such as lamps, armchairs and chairs.

Dekton® Danae, a surface inspired by traditional travertine, helps to blend all the spaces and helps to make the furniture stand out.

Thanks to its large format, the result is a continuous floor in a cream, bright and matte tone with hardly any joints.

—
Architecture
José Poveda Rivera

Photography
Alberto Rojas



A format for every space.

The designer of this home has used large-format Dekton® Danae slabs for flooring. This creates a very neutral and uncluttered effect, helping to highlight the designer furniture, such as the Barcelona chair.

The staircase allows for a different format, giving the impression of floating in space.

→ Flooring,
Dekton® Danae



08/ Living Space

Reinventing
classicism.

**Ochre colour range
with iron and glass.**

In this living room, the designer's aim was to maintain the classicism of dark wood and mustard velvet armchairs together with a modern cantilevered iron and glass staircase. This results in a seamless look thanks to the colour balance provided by the large-format Dekton® Danae flooring.

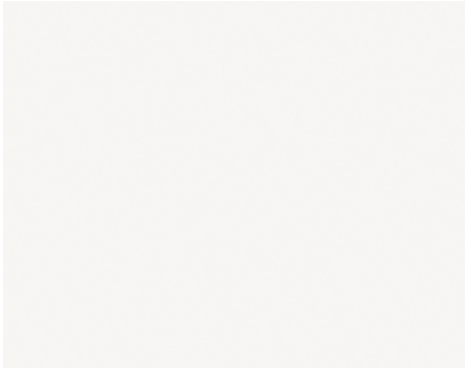


—
Architecture
José Poveda Rivera

Photography
Alberto Rojas



→ Kitchen countertop
Dekton® Zenith



→ Flooring
Dekton® Danae



The kitchen, which opens to the living area, was designed in a material which matches perfectly with the matte white lacquered furniture. A Dekton® Zenith countertop was chosen to create a consistent and appealing effect on the central island.

The use of two shades that go so well together, such as Dekton® Danae and Dekton® Zenith, allows for endless creative possibilities, from the most classic to the most ground-breaking designs.





09/
Living
Space

Cladding to
connect spaces.

**Colour depth and
fine veining.**

Silestone® Charcoal Soapstone was
selected for the wall cladding of the living
room, the island and the kitchen fronts.
With its fine white veining, it creates an
elegant colour contrast to the ensemble.

—
Architecture
Gustavo Martins Arquitetura

Photography
Denilson Machado

Wall cladding
for a niche.

The versatility of Silestone® allows the slabs to be cut to the desired size and to suit every need.

This project features a TV niche, using a different type of cladding and its own lighting, helping to create a contrast.

A further advantage of Dekton® and Silestone® wall cladding is that the designer does not need to fit a skirting board.



→ Wall cladding
Silestone® Charcoal Soapstone



Simplicity
and elegance.

The combination of these two white and dark grey veined materials results in a simple and elegant look. Wooden pieces of furniture, hemp rope and a set of candles add some warmth to the space.

10/
Living
Space

Rediscovering
the connection
between outdoor
and indoor spaces.

**Living rooms which
flow outdoors.**

The architect of this project aimed to create a contemporary space, with large windows, in which the porch and garden blend in with the rest of the home.

Such visual continuity is the result of using large glass walls and the same material for indoor and outdoor spaces. The challenge is to find a beautiful yet practical surface which will withstand unfavourable weather conditions and remain unchanged over time.

The developer of this project found Dekton® Danae to be the ideal solution for integrating both spaces with a large-format continuous flooring.

—
Architecture
Andrés Oller- Arquivirtual

Photography
Alberto Rojas



Dekton® Kelya
kitchen island.

Beige and black make up the colour palette of this space.

For the kitchen island, the designer has opted for a material inspired by natural stone: Dekton® Kelya from the Natural Collection.

This material is available in a Slim format, with a thickness of 4mm, which is suitable for cabinet doors.

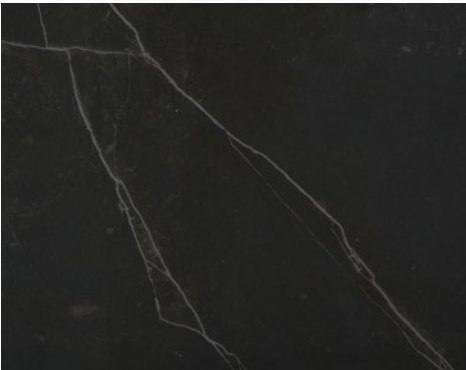
The sink unit, which is made of this material, fits in perfectly with the fireplace and the sideboard in the dining room.



→ Flooring
Dekton® Danae



→ Kitchen countertop
Dekton® Kelya



Natural look: travertine
and black limestone.

The warmth of Dekton® Danae flooring contrasts with the power of the Dekton® Kelya countertop, inspired by a dark grey limestone with marked veins.



11/
Living
Space

Natural sophistication
in living room cladding.

**Grey and beech wood
work together in this
Scandi-style space.**

Everything flows smoothly and in perfect harmony in Nordic and Scandinavian style. The off-white and grey colour range highlights the warmth of the light beech wood as well as the small splashes of colour, always in pastel shades such as pale pink, light blue and aquamarine. This is the key feature of this project – conveying brightness and harmony.

The combination of materials and the use of a veined wall cladding – Dekton® Opera – help to create a natural and tasteful feel.

—
Architecture
Mariana Pescara

Photography
Fábio Jr. Severo

Pastel tones on a classic surface.

The cladding with the veiny Dekton® Opera becomes the perfect canvas for these ceramic objects in different tones.

Over these grey materials, the warmth of the wall cladded in wood in the dining room and the chairs with a Danish feel.



→ Wall cladding
Dekton® Opera



Natural inspiration.

Dekton® Opera is from the Natural Collection. It is inspired by traditional Carrara marble and offers a smooth touch which characterises the velvety texture of Dekton®.

A treat for the senses, its grey veining adds depth and beauty to this space.

Cosentino® Bathrooms

Cosentino® helps you
to rediscover your
bathroom through a
unique and integrated
design concept.



Bathroom Space

Reimagine the most personal space in the home. Create a unique experience in which the most beautiful and functional Cosentino® surfaces transform unique, warm, and exclusive spaces.

From wall and floor claddings in different yet perfectly balanced formats, colours and textures, to attractive vanities and shower trays, carefully designed with great attention to detail and simplicity.

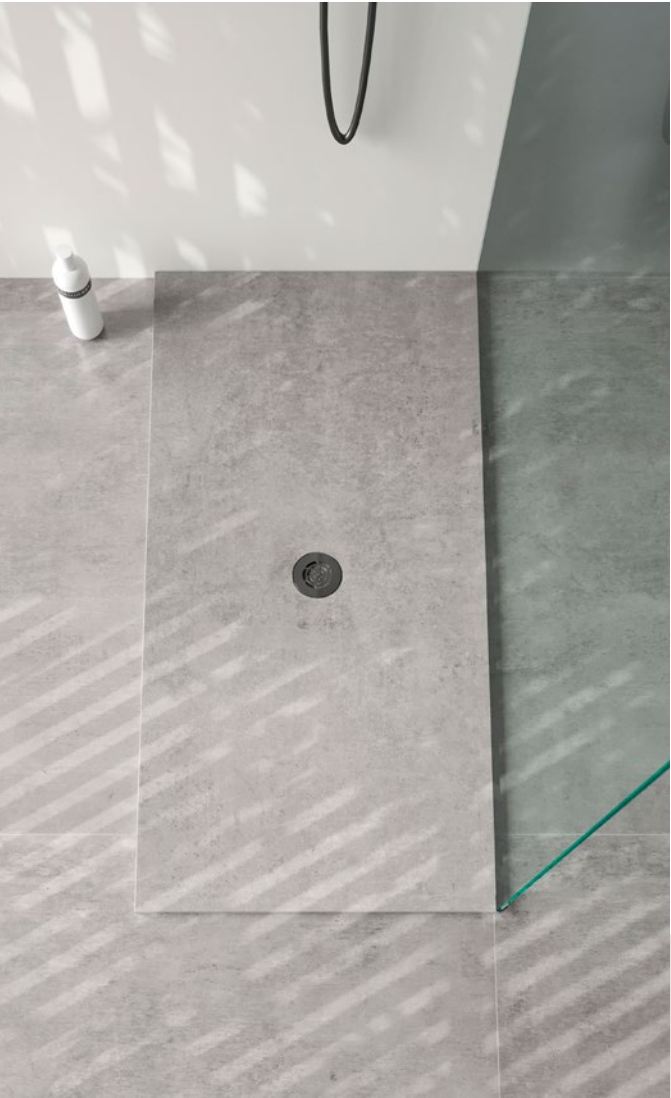
Solutions of great aesthetic and functional value to suit every requirement and style of bathroom, which redefine the way in which we experience such a personal space and feeling of well-being.



Large format

Large format, minimal joints. Tailor-made floors and wall cladding.

Bathrooms are exposed to constant activity. Using a high-quality surface for floors and cladding reduces joints and guarantees hygiene and cleanliness. The strategically placed slabs in XXL make the room look bigger, creating the sensation of a larger bathroom.



Shower Trays

Shower trays with Dekton® Grip+ and Silestone®: exclusive and integrated designs in the bathroom with limitless customisation possibilities.

Cosentino® offers an extensive collection of shower trays in the material the architect or designer chooses and adaptable to any space. It is an interesting alternative to the traditional shower that simplifies installation and assembly.



Architect: Pedro Francisco
Interior design: Alexia Martínez

Sinks

Sinks and countertops with great versatility that adapt to any space. Sophisticated designs with maximum beauty and durability.

Silestone® sinks are built with a unique and innovative design able to live up to the most demanding creative proposals. From sinks that integrate into the countertop, to above-countertop options, double bowls...everything is possible with tailor-made fabrication.



Optimma Format

Dekton® Optimma Format. Optimized for interior bathroom cladding: taking full advantage of the space, easy installation, and design continuity in a vertical format.

The Optimma slab format is 260 x 100 cm y 0.4 cm thick, able to meet any vertical cladding need creating a continuous design, taking advantage of the full height with easy installation and minimum waste.



Total Integration

Total aesthetic integration and visual continuity. The same material for your entire bathroom: floor, cladding, shower tray, and sink.

A single surface applied to every component of the bathroom allows for complete esthetic homogeneity, creating harmony, balance, and amplitude.



Colours and textures

New collections of innovative, on trend colours and textures, to create bathroom spaces full of originality and impact.

Innovative Silestone® and Dekton® surfaces possess a wide variety of solid and veined colours, unique chromatic pantones, and sensory textures to rediscover bathroom spaces.



01/ Bathroom Space

A peaceful ensuite
bathroom.

**The natural beauty of
Dekton® Soke for a relaxing
and inviting space.**

TLC Interior Design is behind the design of this bathroom in an exclusive Perth home, a powerful and organic space with Dekton® Soke as the undeniable star of the design. “Its beauty and organic design created a stunning and seamless space”, explains Bonomi. “This colour gives a very natural touch to the space, as if it had been taken directly from the earth”, she adds.

In general, the colour palette used seeks contrast between dark and light shades, generating very elegant spaces, rich in natural textures.

—
Design
Maria Bonomi,
TLC Interior Design

Photography
Silverstone Photography



Sustainability as a value.

According to Bonomi, the advantages of using a material such as Dekton® -durable, easy to maintain and carbon neutral- are an added value when it comes to developing your creativity. “I feel that using this product allows me to be very creative and, at the same time,

it is an excellent material thanks to its long life and durability”, explains Bonomi.

Here, Soke’s soft appearance, with its realistic, cement-inspired veining, envelops the entire space. A versatile colour offering a wide range of grey shades.

→ Flooring, countertop, shower and cladding Dekton®, Soke colour



02/ Bathroom Space

Minimalist Style.

Minimalist bathrooms, plain and bare: purity of lines, neutral colours and balance of shapes.

Surfaces blend harmoniously in with the space, creating a sense of well-being.





In a minimalist bathroom, shower trays and vanities come together in perfect harmony with horizontal and vertical cladding, all in the same material.

Dekton®’s most versatile interior cladding format, Optimma 260 x 100 cm, surrounds the Gocce shower tray, achieving the best result for a minimalist bathroom.



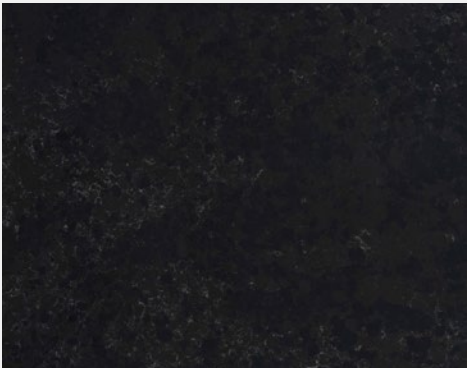
The wide, well-defined lines of the Silestone® Silence sink in Corktown colour (Loft Series), create a dramatic contrast against the Dekton® Rem cladding, a surface featuring a white background with brown and grey veins.

- 1→ Flooring and wall cladding
Dekton® Rem (Optimma Format)
- 2→ Bathroom countertop
Silestone® Corktown
- 3→ Custom shower tray
Dekton® Zenith
- 4→ Silence sink
Silestone® Corktown

①



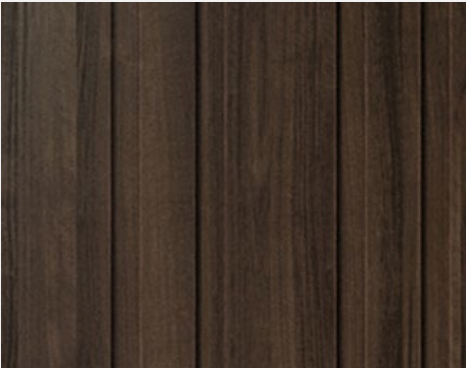
②



③



④





03/
Bathroom
Space

Urban-
Industrial
Style.

Break with convention
and reinterpret the
industrial style bathroom
with a look inspired
by the great cities:
imperfect elements and
colour patterns with
textures full of character.

—
Architecture
Pedro Francisco

Interior design
Alexia Martínez



Contrasting tones in a chic, industrial finish for your bathroom.

In this essentially urban bathroom, the designer used [Dekton® Liquid Embers](#) wall cladding, from the [Dekton® Liquid](#) collection. This material, which is reminiscent of volcanic magma, adds elegance and character to the project.

To achieve a more dramatic effect in this industrial style bathroom, the [Symmetry](#) sink by [Silestone®](#) has been used on a countertop of the same material, thus creating a perfect symbiosis with the wall cladding.

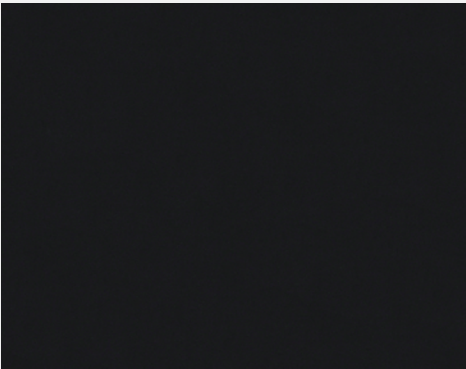
Matte chrome-plated taps, rust-effect sink profiles and black metal framed mirrors complete the scene, giving it a distinctly industrial effect.

In contrast, and to avoid an extremely dark finish, the interior designer has gone for a large-format floor in [Dekton® Lunar](#), which adds that touch of concrete, typical in lofts and urban spaces.

①



②



[Dekton Lunar](#): A reinterpretation of conventional cement inspired by industrial aesthetics. Its subtle structure over a White base tone make Luna a trendy colour. The pattern and background merge perfectly.

- 1→ Floor and wall cladding
Dekton® Lunar
- 2→ Bathroom countertop
Silestone® Negro Tebas
- 3→ Symmetry sink
Silestone® Negro Tebas

04/ Bathroom Space

Minimal style.

Highly decorative and impressive cladding, with the depth, brightness and shine of Dekton® X-Gloss Helena. The lines of the Kador Suite shower tray and the soft-angled Marie Top sink by Silestone®, blend together to create a harmonious bathroom.

- 1→ Kador Suite shower tray, Silestone® Blanco Zeus
- 2→ Marie Top sink Silestone® Blanco Zeus
- 3→ Wall cladding Dekton® Helena, X-Gloss collection
- 4→ Flooring Dekton® Halo, X-Gloss collection,

①



②



③





05/ Bathroom Space

Urban-
Industrial
Style.

Reinterpreting the
industrial style:
cement and veining
enjoy harmonious
interpretation.

Using a black and grey palette, the
designer has created a timeless yet
modern bathroom, in which two very
powerful elements stand out: the grey floor
with cement effects, in Dekton® Kreta,
and the monolithic-looking countertop, in
Silestone® Charcoal Soapstone.

—
Architecture
Pedro Francisco

Interior design
Alexia Martínez



Floor and wall cladding
in the same material
to unify spaces.

Inspired by the typical New York style loft without walls, the interior designer planned a metal and glass structure that also serves as the front of the bathroom.

A strong-looking half wall in the same material as the floor – Dekton® Kreta – is vertically integrated into this structure.

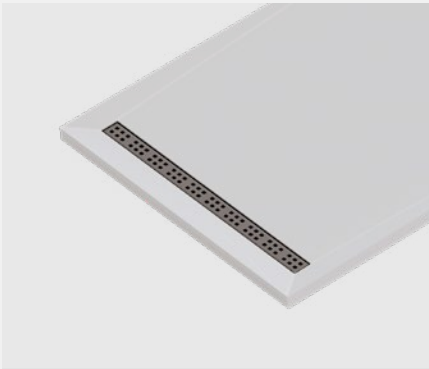
On the horizontal plane, the Silestone® Charcoal Soapstone countertop stands out. In total creating a very attractive contrast of planes and volumes.

In contrast, and to add a sense of lightness, the designer has opted for two beautiful and delicate Marie Top sink in Silestone® Blanco Zeus, featuring a round design.

1



2



3



4



- 1→ Bathroom countertop
Silestone® Charcoal Soapstone
- 2→ Marie Top sink
Silestone® Blanco Zeus
- 3→ Tailor-made shower tray
Dekton® Kreta
- 4→ Floor cladding
Dekton® Kreta

A large-format, grey floor is always the right choice. In this project, the Dekton® Kreta material from the Industrial Collection provides a cement-like finish, ideal for an industrial or urban decorating style.

With its soft, rounded lines, the Marie Top sink is the perfect choice to place on the countertop. Although this project has a distinctly industrial look, its one-piece design, with no visible joints, enhances its attractiveness.





06/ Bathroom Space

Urban-
Industrial
Style.

Continuous surfaces for
floor, vertical cladding,
countertop and sink to create
a flowing, unified space.

—
Architecture
Pedro Francisco

Interior design
Alexia Martínez

①



②



The uninterrupted surface of Dekton® Vera, used for floor, wall and countertop with sink, is the unifying feature in this bathroom. This material from the Natural Collection is reminiscent of polished cement, but also features long, delicate veins that run along the entire surface.

The impressive, straight-lined Simplicity sink, also in Dekton® Vera, is fully integrated into the countertop.



1→ Countertop, floor and wall cladding
Dekton® Vera
2→ Simplicity sink
Dekton® Vera



07/
Bathroom
Space

Mediterranean Style

Warm colours and the light of the Mediterranean are brought together in this boho-chic inspired bathroom

Raw, imperfect materials are currently in vogue. This bathroom perfectly conveys the taste for authenticity and natural elements, achieved through the use of simple lines, textures and a matt finish.



—
Architecture
Pedro Francisco, architect

Interior design
Alexia Martínez, interior designer



Large format, cream coloured surfaces unify the space and bring warmth

The designer has created a neutral base from a sophisticated and textured material inspired by Venetian plaster, which is part of the [Kraftizen Collection: Dekton® Nacre](#). This material in a delicate cream tone has been used for the walls, floor and shower tray.

To add a touch of colour to the bathroom, the side walls are clad in [Dekton® Umber](#), a vibrant red brick colour reminiscent of the reds and ochres of Sienna.

The pure white of the [Evita L](#) washbasin, in [Silestone® White Zeus](#), stands out against the toasted Nacre colour, as if it were a Greek sculpture.

With two basins and large dimensions, the Evita washbasin's cantilever design helps to evoke a feeling of lightness, which contrasts with its size and volume. An untreated pine bench complements the washbasin and enhances its beauty.

The result is a harmonious and well-balanced bathroom, with a distinctly Mediterranean character.

- 1→ Floor and wall cladding
Dekton® Nacre
- 2→ Evita L washbasin
Silestone® White Zeus
- 3→ Gocce shower tray
Dekton® Nacre
- 4→ Bathroom countertop
Silestone® White Zeus
- 5→ Wall cladding
Dekton® Umber

①



②



③



④



⑤





08/ Bathroom Space

Urban-
Industrial
Style.

All-black elegance
in an urban style
bathroom with a
vintage touch.

In this bathroom, black takes centre stage through a design in which the cladding, sink and countertop work together to create a space evoking urban elegance.

Otherwise dominated by an urban style, black is used for the cladding, countertop, sink and mirror. The designer has also incorporated vintage details reminiscent of bygone times. These subtle touches, which can easily go unnoticed if you don't look closely - such as the carved mirror frame, the cruciform taps, or the herringbone floor - add personality.



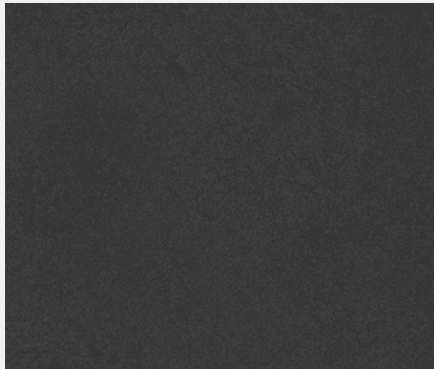
A personal, urban style
with classic references and
the most technologically
innovative materials.

The designer has used large-format slabs in Dekton® Eter for the cladding, creating uninterrupted walls with almost no joints, thereby saving on cutting.

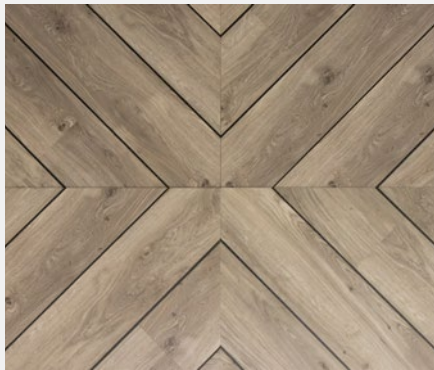
Dekton® Eter is part of the Natural Collection. It has the look of granite and works very well both indoors and outdoors.

The Symmetry sink, in Silestone® Iconic Black, is placed on the countertop, resulting in a very contemporary design. In contrast to the large countertop, its small size and arrangement, angled to the left, provides interesting asymmetry in the bathroom.

①



②



1→ Countertop and wall cladding
Dekton® Eter
2→ Symmetry sink
Silestone® Iconic Black

09/ Bathroom Space

Mediterranean Style

Lush greenery, warm woods and polished gold make up the colour palette of this bathroom.

The first thing that is striking about this project is the use of two very different materials which belong to the same colour series, [Dekton® Kraftizen](#).

Surfaces in this series showcase craftsmanship alongside the most advanced technology, and feature a matt finish with a unique texture.

The interior designer chose [Dekton® Micron](#) for the floor and the wall where the countertop and taps are located.

In contrast, [Dekton® Albarium](#) is used for cladding the wall where the [Dekton® Micron](#) alcove is situated, helping to create a powerful design which is both beautiful and functional.

[Architecture](#)
Pedro Francisco, architect

[Interior design](#)
Alexia Martínez, interior designer



Silestone® has developed its own collection of shower trays and washbasins which can be customised with an almost limitless range of finishes and sizes.

Once again, the Silestone® Marie Top washbasin has been chosen for its delicate white tone, helping to capture the attention of the whole room. French cane furniture, cruciform taps in brushed gold and greenery spilling through the window pay homage to luxury design in this otherwise stark bathroom.

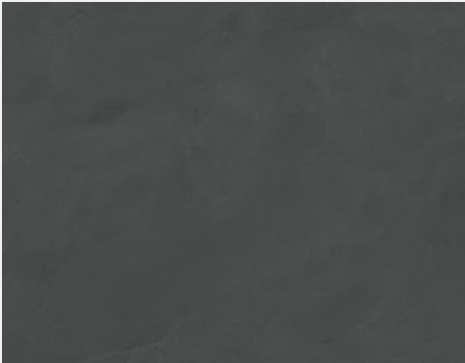
- 1→ Wall cladding
Dekton® Albarium
- 2→ Wall, floor and alcove cladding
Dekton® Micron
- 3→ Marie Top washbasin
Silestone® White Zeus
- 4→ Kador Suite shower tray
Silestone® Cemento Spa



①



②



③



④





Cement, wood and iron: an essential, classic trio for any industrial style project. In this industrial style bathroom, all three materials are very much present.

Floor and cladding feature [Dekton® Kreta](#), a cement-like grey colour that is part of the [Industrial Collection](#).

The under counter cabinet in reclaimed wood with black metal profiles finishes off the industrial look.

To create contrast whilst highlighting the washbasin area, the designer has chosen a [Silestone® White Zeus](#) countertop. The washbasin integrated into the countertop provides a practical and hygienic design.

10/ Bathroom Space

Urban-
Industrial
Style





Custom showers and shower trays in the same material as the floor.

Integrating the shower area with the floor and wall cladding in order to avoid cuts and changes of plane creates a seamless, on-trend look.

The Dekton® Gocce shower tray makes it easy to achieve. Uninterrupted surfaces, large-format shower screens with black profiles and ceiling-mounted shower heads result in a stunning shower design.

In this project, the Evita S washbasin is integrated into the countertop. Both integrated washbasins and surface-mounted washbasins are currently in vogue.

The use of cantilever, freestanding furniture and matt black taps finish off the look.

1



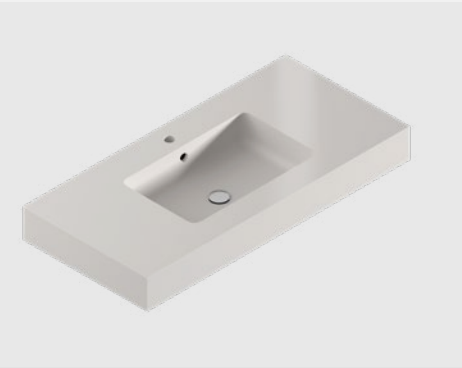
2



Silestone® White Zeus, from the Mythology Collection, is a timeless material, which brings a touch of brightness and character to any bathroom.

Dekton® Kreta is a cement inspired material, perfect for urban or industrial style decoration. Its 320 x 144 cm format allows for continuous surfaces and integrated spaces; for example, the bedroom, bathroom and living room – the result is a loft style look.

3



4



- 1→ Bathroom countertop
Silestone® White Zeus
- 2→ Floor and wall cladding
Dekton® Kreta
- 3→ Evita S washbasin
Silestone® White Zeus
- 4→ Gocce shower tray
Dekton® Kreta

11/ Bathroom Space

Contemporary
Style.

A very personal design featuring classic materials, brought up to date with the most contemporary trends.

A white colour with veins is the perfect background for any bathroom looking for a classic touch. For this reason, Silestone® Calacatta Gold, a white colour featuring grey veins with golden nuances, was the material of choice.



—
Architecture
Debora Aguiar Architects

Photography
Denilson Machado



Large vertical
and horizontal
planes.

Contemporary design is fundamentally practical. In contemporary style, functionality comes first but without compromising on beauty.

In this bathroom, the interior designer selected a large shower enclosure, an extra large frameless mirror and spacious drawers for storage.

The designer also incorporated decorative elements, such as greenery, polished copper taps and a material reminiscent of Ancient Greek marble: Silestone® Calacatta Gold.

A huge bespoke bath in the same material takes centre stage in the room.

→ Floor cladding and customised bath
Silestone® Calacatta Gold





12/
Bathroom
Space

Contemporary
Style.

An interesting use
of space and cream
tones result in this
contemporary
style bathroom.

Three vertical planes - mirror, sink and window -
in perfect contrast to the monolithic countertop
and the horizontal plane of the floor, in the same
material, achieve a spectacular result in this very
architectural bathroom.

—
Architecture
Pedro Francisco Architect

Interior design
Alexia Martínez



The coldness and abruptness of square shapes and vertical and horizontal planes is offset by the warmth of the materials used in the project.

Inspired by the quartzite of the Taj Mahal, Dekton® Taga evokes the elegance and character of natural stone.

For the wall, the designer has chosen Dekton® Taga, a colour embracing earth tones and caramel-coloured veins: an evocative yet classic colour for such a modern design.

Dekton® Fossil, from the Natural Collection, has been used on both the countertop and floor, achieving an excellent result: a dark grey cladding that transports us back to the most ancient periods. This colour is available in two formats, 320 x 144 cm and made to measure, which is very useful when it comes to cladding the horizontal planes of a space, such as the floor and countertop of this bathroom.

Finally, as if it were a huge totem, the sink has been custom-made in Silestone® Negro Tebas, with an attractive matt texture finish.

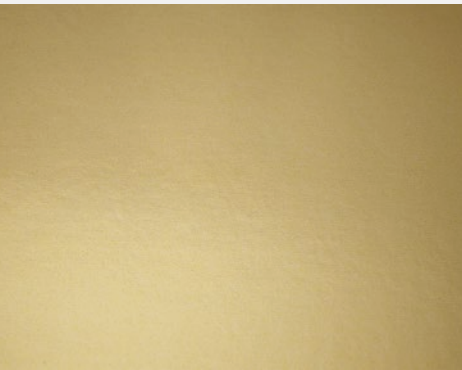
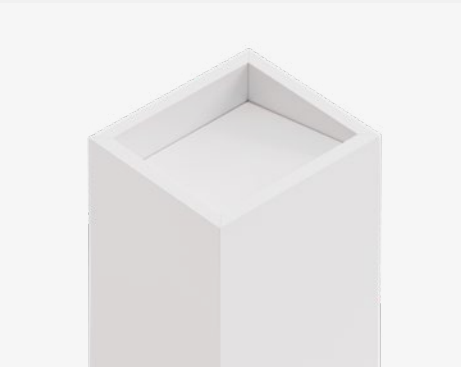
①



②



③



- 1→ Wall cladding
Dekton® Taga
- 2→ Countertop and floor cladding
Dekton® Fossil
- 3→ Customised sink
Silestone® Negro Tebas

13/
Bathroom
Space

Contemporary
Style.

This bathroom
showcases a new
interpretation of
contemporary style.

Glossy white materials with marked veins work with touches of gold taps, cabinet profiles and trays to create a distinctive style, but without being overly flashy. The countertop in Silestone® White Zeus stands out for its brightness and clean lines.



—
Architecture
Mariana Pescara

Photography
Fábio Jr. Severo

→ Countertop
Silestone® White Zeus, Polished finish





14/
Bathroom
Space

Contemporary
Style.

A revamped
classic style for
this bathroom with
cream tones that
exudes elegance
and good taste.

Nothing has been left to chance in this
bathroom. The result is a calm, peaceful
atmosphere that invites relaxation.

To convey this feeling of relaxation and at the
same time create a classic style bathroom,
the interior designer has utilised a palette of
cream tones and a well-balanced design of
each element. The sink unit, wooden wall and
the freestanding bath take centre stage and
work in perfect harmony with each other.



The walls in Dekton® Entzo enhance the bathroom while adding a classic touch.

Dekton® Entzo is a material inspired by Calacatta marble. Featuring prominent veins in brown tones, this material brings life and personality to the bathroom and is the perfect companion for the countertop unit.



Neutral tones and subtle textures for each of the bathroom elements: personalised comfort for a unique experience.

The rest of the walls are clad in Dekton® Zenith, a more neutral material without veins.

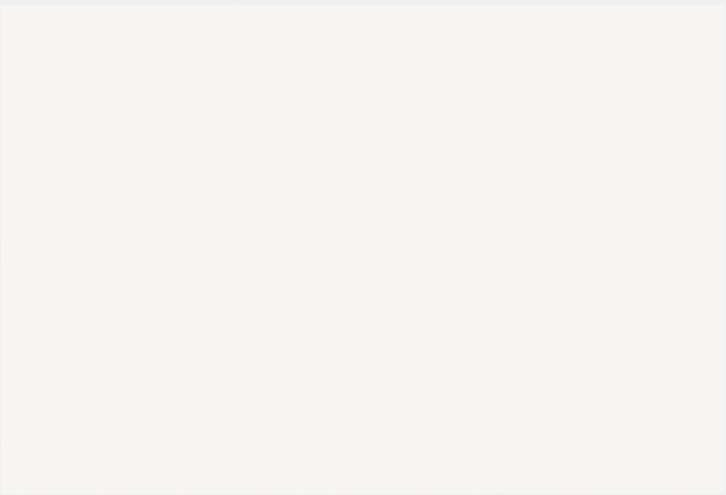
Finally, the floor features a geometric pattern, designed to emulate the floors of ancient temples. Here, the interior designer has combined Dekton® Entzo, Danae and Ventus, achieving an impressive result.

- 1→ Countertop and wall and floor cladding Dekton® Entzo
- 2→ Shower wall cladding Dekton® Zenith
- 3→ Floor cladding Dekton® Danae
- 4→ Floor cladding Dekton® Ventus

①



②



③



④



15/
Bathroom
Space

Contemporary
Style.

When naturalness is key, the most eclectic elements co-exist in perfect harmony.

The contemporary character of this bathroom is a result of various trends used in its design, all characterised by the use of natural materials: tropical wood in dark tones, natural stone and greenery in the interior garden seen through the window.



—
Architecture
Pedro Francisco, architect

Interior design
Alexia Martínez, interior designer



Asymmetric cladding
with a natural look
using Dekton® Rem.

For the wall cladding, the designer has chosen Dekton® Rem, a material from the Natural Collection which is inspired by classic marble.

Furthermore, the cutting into strips of two different widths brings modernity to an otherwise classic material.



Dekton® Rem was also used on the floor, this time featuring large-format slabs. Thus, by combining two different formats of the same material, the bathroom becomes a flowing, unified space.

Dekton® Rem was also the chosen material for the Gocce shower tray.

Finally, details such as the wall in tropical wood, the industrial elements like the shower profile or the metallic mirror, and the vintage taps in aged gold add a touch of colour to this bathroom. The result is a well-balanced, eclectic and very contemporary design.

- 1→ Bathroom countertop
Silestone® White Zeus
- 2→ Wall cladding
Dekton® Rem
- 3→ Evita S washbasin
Silestone® White Zeus
- 4→ Gocce shower tray
Dekton® Rem

1



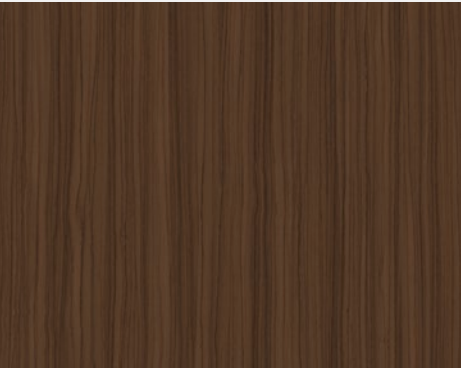
2



3



4



Sinks

Full array of products.

Sinks and countertops designed to adapt to any space.



Armony
The evolution of tradition makes this sink a key piece, bringing harmony and definition.



Available in a wide variety of colours.



Check available colours at [cosentino.com](https://www.cosentino.com)



Elegance

Silestone®

Basin 49 x 30 x 10 cm
Length from 59 to 320* cm
Width from 40 to 60 cm
2 cm straight edge or 12.5 cm skirt



Reflection

Silestone® / Dekton®

Basin S 49 x 30 x 8 cm
Basin M 90 x 30 x 8 cm
Basin L 120 x 30 x 8 cm
Length from 59 to 320* cm
Width from 40 to 60 cm
SI 2 o DK 1.2 cm straight edge or 12.5 and 16 cm skirt



Armony

Silestone®

Basin 49 x 30 x 10 cm
Length from 59 to 320* cm
Width from 40 to 60 cm
2 cm straight edge or 16 cm skirt



Silence

Silestone® / Dekton®

Basin S 49 x 30 x 8 cm
Basin M 90 x 30 x 8 cm
Basin L 120 x 30 x 8 cm
Length from 59 to 320* cm
Width from 40 to 60 cm
SI 2 o DK 1.2 cm straight edge or 12.5 and 16 cm skirt



Symmetry

Silestone®

Basin S 33 x 23 x 7 cm
Basin M 38 x 25 x 7 cm
Basin L 58 x 30 x 7 cm
Length from 55 to 320* cm
Width from 43 to 60 cm
2 cm straight edge or 10 cm skirt



Simplicity

Silestone® / Dekton®

Basin 49 x 30 x 10 cm
Length from 59 to 320* cm
Width from 40 to 60 cm
SI 2 o DK 1.2 cm straight edge or 12.5 and 16 cm skirt

*Jumbo slab only

Integrity Sinks

Full array
of products

Sinuous, organic and linear shapes, made
on hygienic easy-to-clean surfaces.



Available in
a wide variety
of colours.



Check available colours
at [cosentino.com](https://www.cosentino.com)

Marie
Three sizes in a design
of round and functional
encounters that combines
technology, integration,
and practicality.



Marie

Silestone®

Basin Marie Top: 51 x 37 x 10 cm
Basin Marie S: 34 x 37 x 7 cm
Basin Marie L: 51 x 37 x 7 cm

Length from 47 to 320* cm
Width from 44 to 60 cm
2 cm straight edge or 10 cm skirt
(Marie Top) or 12.5 cm (Marie S y L)

Evita

Silestone®

Basin Evita S: 50 x 30 x 10 cm
Basin Evita L: 65 x 30 x 10 cm
Basin Evita Q: 51 x 41 x 10 cm

Length from 60 to 320* cm
Width from 40 to 60 cm
1.2 cm straight edge or 12.5 cm skirt

H-Line Sinks

Different countertop and bathroom shelf
solutions, with a modern and design adaptable
to any need, adding sophistication to the
bathroom space.



Urban porcelain overmount

Silestone® / Dekton®

Length from 45 to 320* cm
Width from 46 to 60 cm
1.2 cm straight edge or 10 cm skirt

Flex porcelain undermount

Silestone® / Dekton®

Length from 60 to 320* cm
Width from 46 to 60 cm
1.2 cm straight edge or 10 cm skirt

*Jumbo slab only

Shower Trays

Full array of products

Six adaptable shower tray models in a variety of materials and finishes of Dekton® and Silestone®, suitable for any space in the home and technical requirements, no matter how complex.



Available in
a wide variety
of colours.



Check available colours
at cosentino.com

Gocce
A more functional
and simple new
design that fits in
all the spaces.



Wakka

Silestone®

Length from 70 to 250 cm
Width from 70 to 150* cm



Wakka Brim

Silestone®

Length from 70 to 250 cm
Width from 70 to 150* cm



Kador Suite

Silestone®

Length from 70 to 200 cm
Width from 70 to 150* cm



Gocce

Dekton® Grip+

Length from 70 to 190 cm
Width from 70 to 96 cm



Exelis

Silestone®

Length from 70 to 320* cm
Width from 70 to 150* cm

*Jumbo slab only

Bath tops

Horizontal and functional planes with straight lines created by Silestone® and Dekton® to create a variety of sophisticated sinks in the same material.



Available in a wide variety of colours.



Check available colours at cosentino.com



Straight edge countertop

Silestone® / Dekton®

Length from 60 to 320 cm
Width from 30 to 60 cm
1.2 cm straight edge

Countertop with skirt

Silestone® / Dekton®

Length from 60 to 320 cm
Width from 30 to 60 cm
6, 10 ó 21 cm skirt

Flooring

Tailor-Made and standard formats.

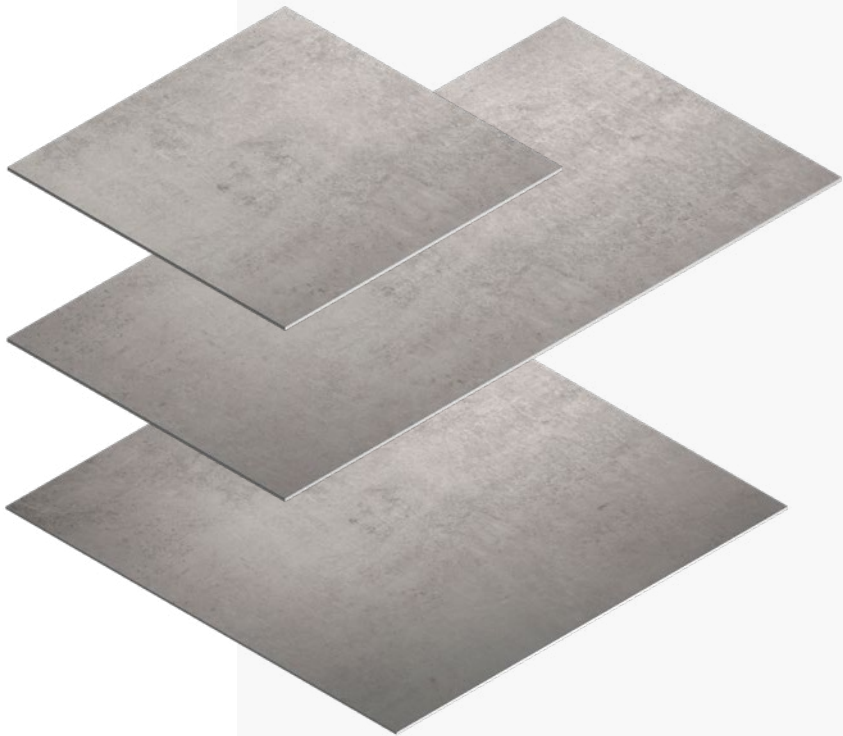
Achieve aesthetic continuity in the bathroom floor with standard format solutions or personalised ones of great resistance when faced with fluctuations in humidity and temperatures. Minimal jointing and maintenance-free.



Available in a wide variety of colours.



Check available colours at cosentino.com



S Format

Dekton®

71 x 71 cm

M Format

Dekton®

142 x 71 cm

L Format

Dekton®

142 x 142 cm

Cosentino® Exterior Space

Beautifully continuous
and durable
outdoor spaces.

Redesign your
outdoor spaces to
include porches and
terraces that blend
in with your home.

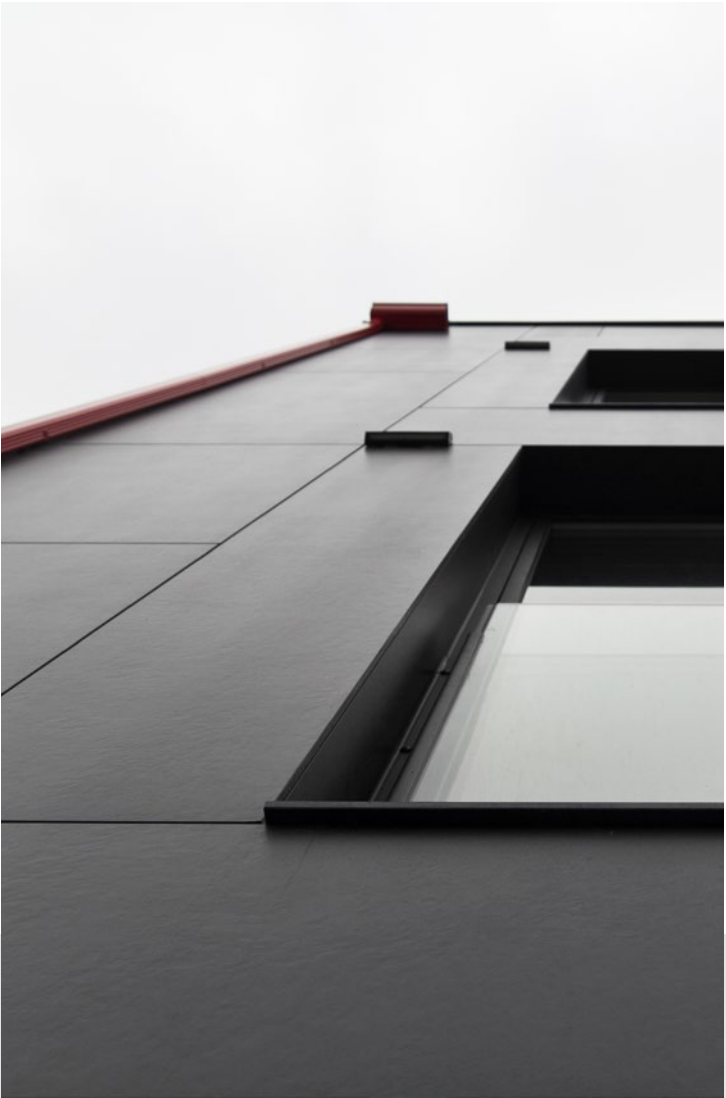


Exterior Space



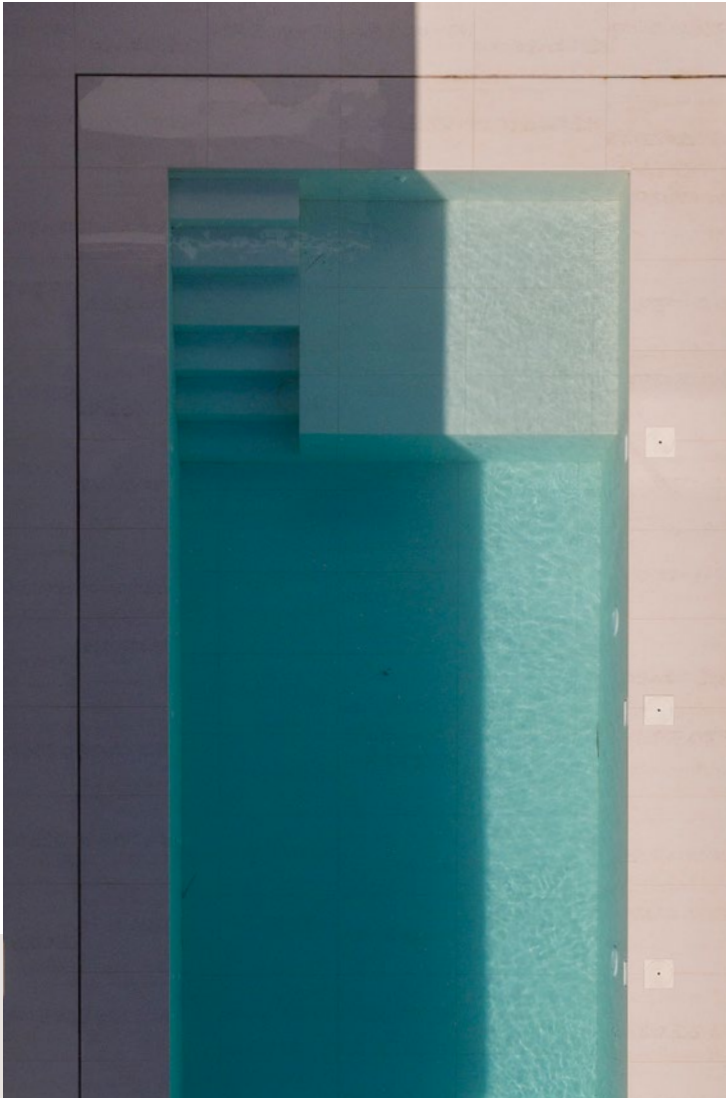
Customisation without limits

Open spaces with freedom for inspiring, designing with a unique purpose: personalising your outdoor space.



Easy installation

Dekton® is a very lightweight, easy-to-cut and adaptable format.



High transit resistance

It remains unalterable faced with daily erosion and abrasion in outdoor spaces, used in terraces, stairs and pool surroundings.



Dekton® Outdoor Countertop

Dekton® outdoor countertop is resistant and durable. Innovative surfaces turn into functional and beautiful countertops.

01/ Exterior Space

Redesign your outdoor space to include porches and terraces that blend in with your home.

Beautifully continuous and durable outdoor spaces.

Outdoor areas such as porches, terraces or gardens have become the most precious spaces of the home. In the past, outdoor materials required annual maintenance and often lacked proper care. In addition to this, there was always a visible gap between indoor and outdoor flooring.

Dekton® redefines the experience of enjoying outdoor spaces by creating uninterrupted floors that continue inside. The exterior and interior become continuous, with almost no joints or maintenance, and will remain unaltered over time.





→ Flooring,
Dekton® Aeris



Dekton® Aeris is a material from the Natural Collection that features an interesting combination of beige and grey with a concrete-inspired look. It works very well on outdoor floors thanks to its 320 x 144 cm format. It can be fitted to a staircase, swimming pool, outside covered area, etc., and it can continue inside the home.

Dekton® Grip+ prevents slipping in outdoor areas when walking barefoot. In addition, it is highly resistant to stains, UV rays and temperature changes

Outdoor spaces with a concrete look.

A large-format natural foundation connects the porch or terrace with the living room; the material has the look and feel of concrete, but without its disadvantages – the end result is spectacular! The designer can find all these advantages in Tech and Industrial collections by Dekton®.





02/ Exterior Space

Sand and white
expanses with
Mediterranean
character.

Visual continuity.

In this project, the architect designed a Mediterranean and up to date house with cubic volumes and modern floor plans.

The Mediterranean style can be seen in the white walls, reminiscent of the whitewashed houses of southern Spain, and in the continuous large-format floor that evokes the seaside. A warm, durable and practical material that connects the terrace, porch and bathroom spaces.

—
Architecture
Andres Oller-Arquivirtual

Photography
Alberto Rojas



→ Flooring
Dekton® Danae



The warmth of Dekton® Danae.

Dekton® Danae from the Natural Collection is a timeless material that blends perfectly into any space. Its limestone beige tone is reminiscent of sand.

It is available in 320 x 144 cm format, making it the perfect choice for flooring.

There are 5 thicknesses (4, 8, 12, 20 and 30 mm); ideal for countertops, furniture and wall cladding both indoors and outdoors.

03/ Exterior Space

Inspiring outdoor
spaces that associate
with local materials.

Functionality with a rustic touch.

In this porch and garden project, the interior designer has renovated a house with practical and technologically efficient materials. This stylish renovation includes the use of Dekton® Kreta for the flooring and the replacement of the original windows with large glass windows.

These modern finishes fit perfectly with the stone masonry walls, terracotta pots and rattan chairs – all traditional materials with a rustic touch.





→ Flooring
Dekton® Kreta

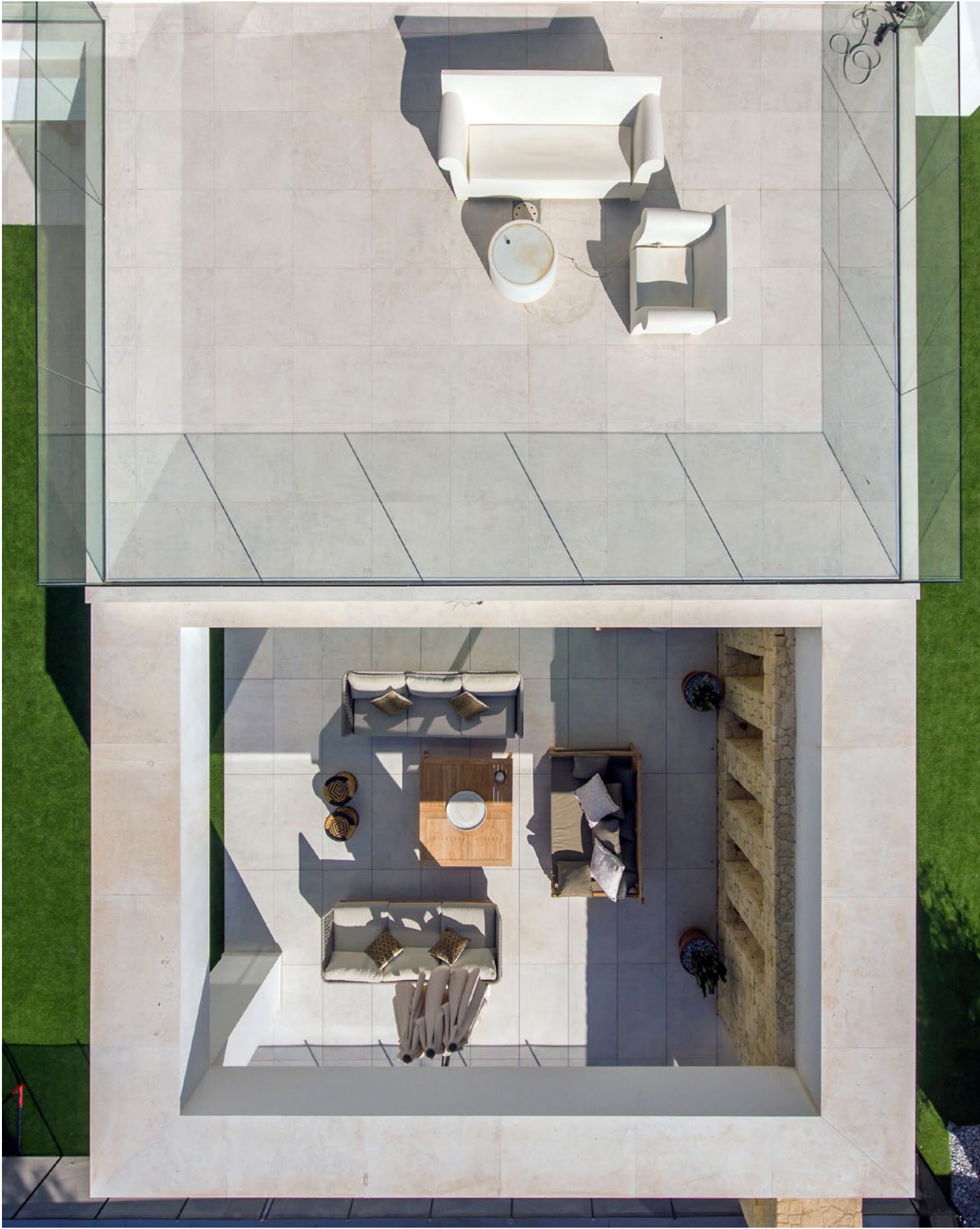


Floor and large-format table with the same code: Dekton® Kreta.

Dekton® Kreta was selected for the outdoor flooring of this house, a grey part of the Industrial Collection that mimics cement.

Even though it is available in a 320 x 144 cm format, the designer opted for a more reduced format to leave visible joints reminiscent of a checkerboard.

The same material was used to create the large 4 metre table, which created a monolithic, robust, and potent effect.





04/
Exterior
Space

The transformation
of a 1960s building
starting with its façade.

**Dekton® and
ventilated façades.**

The architect of this project had to deal with major structural problems. The idea was to restore a building from the 1960s with a low load-bearing capacity where limitations of energy demand and sound insulation had to be resolved. Furthermore, it was important to find a material that could withstand the unforgiving coastal conditions and could easily hide the installations and building elements.

The developer proposed the use of a ventilated façade with ceramic cladding. Based on this proposal, the architect and marble supplier found the perfect solution in Dekton®.

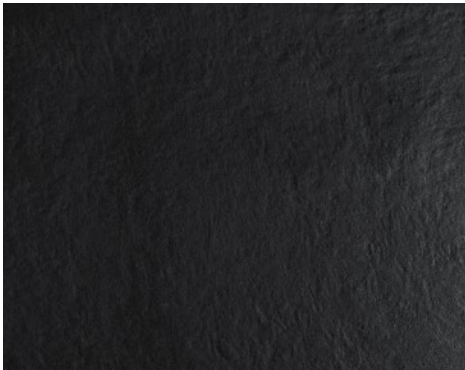
Thanks to Dekton®, they solved the structural and functional problems encountered, while providing an optimum and attractive result in record time.

—
Architecture
Leandro M. del Río Regos

Photography
Roi Alonso



→ Ventilated façade
Dekton® Sirius



Dekton®, the new skin
for residential buildings

Thirty-eight 1.2cm thick Dekton® Sirius slabs were used to clad the façade, which corresponds to a total surface area of 175m². These slabs are easy to maintain and are supported on a stainless steel and aluminium structure that is highly resistant to moisture.



05/ Exterior Space

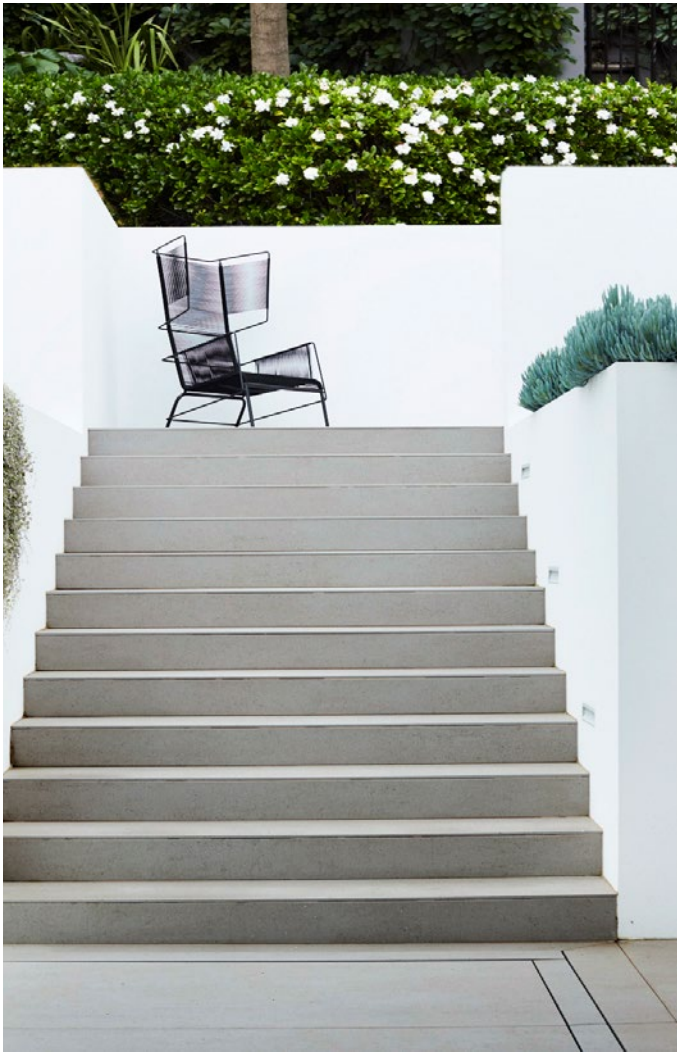
Reinvent outdoor spaces with continuous cream and white surfaces.

Visual continuity, versatility and durability for outdoor spaces.

This residential project stands out because of the use of a single material for all of the outdoor flooring, such as: access to the garage, steps, porch, swimming pool, etc. Dekton® Strato has been used throughout the outdoor space, in contrast to the pure appearance of the white walls and the large glass surfaces.

The result is a modern and functional structure that suits any design.





→ Flooring
Dekton® Strato



Dekton® Strato is a material from the [Tech Collection](#) that is reminiscent of concrete surfaces. Its grey and beige speckled design creates an attractive and practical interplay of light for outdoor spaces. Thanks to its 320 x 144 cm format, it is the perfect material to provide a sense of visual continuity.



06/
Exterior
Space

XXL format for large
surfaces which stand
out in your home.

**Porch and terrace
in a single finish.**

One of the challenges of this project was to successfully integrate the outdoor space with the rest of the house.

To do this, Dekton® Danae 320 x 144 cm slabs have been laid vertically with continuous joints that are barely visible.

The use of the large format in this layout gives a sense of depth, welcoming you into the home while connecting the outdoor and indoor spaces.

—
Architecture
José Poveda Rivera

Photography
Alberto Rojas



→ Flooring
Dekton® Danæe



Endless possibilities in any outdoor space.

In addition to the unique properties of the material that make it ideal for outdoor applications, the different beige shades of Dekton® Danæe also make it a very beautiful choice.

The large-format flooring on the two floors of the house connect and blend both spaces seamlessly with an elegant and timeless visual appearance.

Cosentino® Kitchens

Reinventing the
kitchen to make it
the heart of the home.



Kitchen Space

It's been a long time since the kitchen was a forgotten room in the darkest part of the house. The kitchen is now a key space that can integrate with the living-dining room and share the same design.



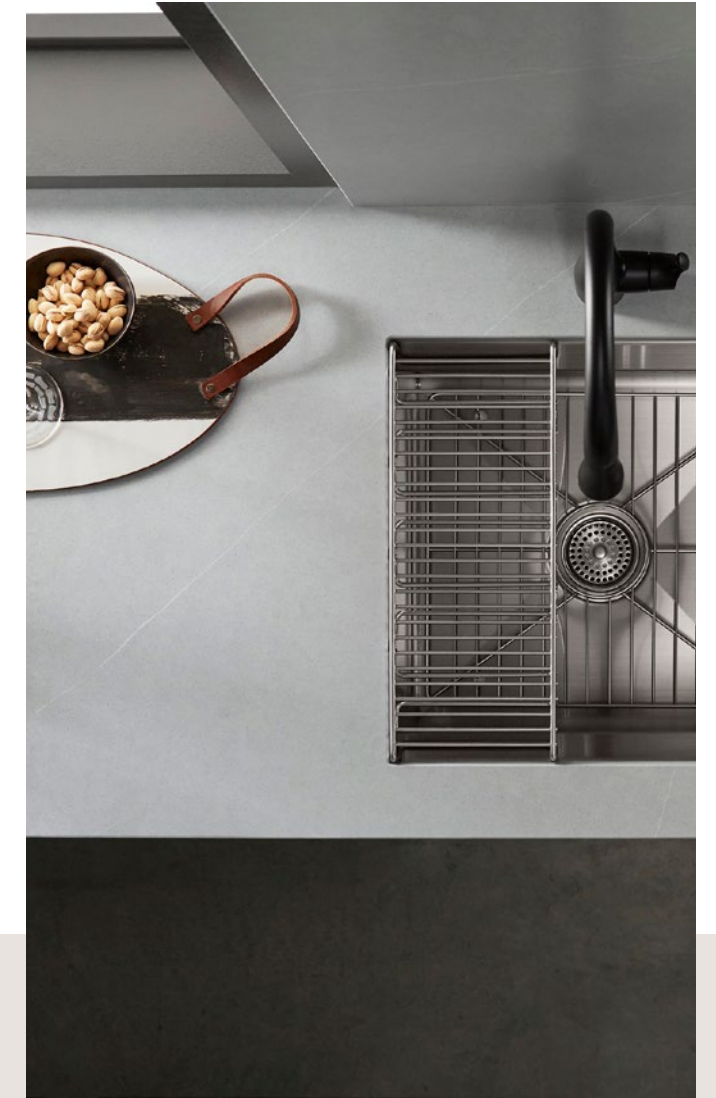
Integration within the space

The kitchen as a living space connected to the rest of the house. Total integration of the countertop with the living room cladding or floor.



Kitchen Countertop and Island

Thousands of households all over the world have trusted Cosentino® to provide them with a kitchen that is not only functional and beautiful, but also plays a key role in the daily lives of their families. We offer a wide range of colours and textures, so you're sure to find your perfect countertop.



Kitchen Flooring and Cladding

In this so-called “reconversion” process, the island plays a major role, as it serves as a connecting element between the two environments as well as a meeting place in the home. In this project, the interior designer built the entire design around the island.



Kitchen Sinks

The sink is a crucial feature within the room: it must guarantee resilience, safety, and hygiene. At Cosentino® we use a low-porosity material which can withstand impact, high temperatures, and frequent exposure to water and grease.

Find your style: colours that combine with everything

For choosing the textures and colours that could fit better with your kitchen, it is key that you know the designs available. Maximise it with the unlimited variety of materials, formats and colours that Cosentino® offers you.



01/
Kitchen
Space

An elegant and timeless design.

The brightness of Dekton® Opera provides the perfect contrast to this kitchen.

The sophisticated design of Dekton® Opera allowed Annika Rowson, designer of this family kitchen, to balance a palette of plain shades of grey, white and black with a contemporary design and soft veining that connects the whole.

The result is a timeless and luxurious atmosphere that extends beyond the confines of the kitchen and into the stairs and other rooms of this new build home in New Plymouth, New Zealand.

Design
Annika Rowson

Photography
Gina Fabish



Kitchen Space



A flawless, bright texture.

Inspired by the elegant Italian Carrara marble, Dekton® Opera brings unrivalled beauty to the surface of the kitchen island, the focal point of the room. Its light grey veining against a creamy white background provides a classic and refined design which, together with the dark furniture, produces a dramatic effect in this kitchen.

With its high resistance to high temperatures, scratches and stains, Dekton® is the perfect surface for a hygienic and durable work surface.



→ Worktop and stairs
Dekton® Opera



02/ Kitchen Space

Beauty
from the Earth.

**Dekton® Radium for an
organic and visually
powerful design.**

Combining the beauty of nature with functionality was the main aim of this project. Located in south Perth, Australia, with panoramic views of the city, this family house has been carefully designed by TLC Interior Design. To this end, the studio decided to use Dekton®, “a material that was perfectly suited to the project and was exactly what the customer was looking for”, says Maria Bonomi, Director at TLC.

The striking texture of Dekton® Radium, a colour with the appearance of rusted, acid-degraded steel, provides the perfect match for the dark wood furniture chosen for this large room.

Design
Maria Bonomi,
TLC Interior Design

Photography
Silverstone Photography



A very durable and versatile surface.

According to Bonomi, the advantages of using a material such as Dekton® are an added value when it comes to developing your creativity in projects. “I feel that using this product allows me to be very creative and, at the same time, it is an excellent material thanks to its long life, durability and wide range of options and shades, suitable for both outdoor and indoor spaces”, explains Bonomi.

The result is a space with earthy colours and a very functional design, perfect for the everyday.

Inspired by rusted, acid-degraded steel, Dekton® Radium perfectly combines warm ochre and brown shades with the fresh character of bluish and greenish tones.

Dekton® Radium is manufactured following a sustainable production approach and is made from 80% recycled materials.

→ Worktops, sink and kitchen front by Dekton®, Radium colour





03/ Kitchen Space

Reinventing the kitchen to make it the heart of the home.

Connecting the kitchen and living room.

Gone are the days when the kitchen was a forgotten room in the darkest part of the house. The kitchen is now a key space that can integrate with the living-dining room and share the same design.

In this so-called “reconversion” process, the island plays a major role, as it serves as a connecting element between the two environments as well as a meeting place in the home. In this project, the interior designer built the entire design around the island.



Island in a classic material.

Although this kitchen has a distinctly modern look, the designer has opted for a classic material for the countertop: Silestone® Calacatta Gold in a polished finish. The use of a 5 centimeter strip and the diagonal cut on the front side bring modernity and style to a material reminiscent of ancient marble.

→ Kitchen countertop
Silestone® Calacatta Gold, Polished finish



04/
Kitchen
Space

Islands that
turn into
dining table.

**Kitchen table and
wall cladding in the
same material.**

In this project, the brown tones of dark wood and the black cladding in Dekton® Domoos used on tables and walls, coexist in perfect harmony.

The island, with a built-in sink, is more than just an island. It turns into a genuine dining table of substantial proportions. The bioethanol fireplace serves as a divider between the kitchen and the living area.

The result is an elegant, well-balanced and warm space. The use of large-format cladding, 320 x 144 cm, creates the illusion of an uninterrupted, jointless surface that gives depth to the room, whilst ensuring easy maintenance and cleaning.



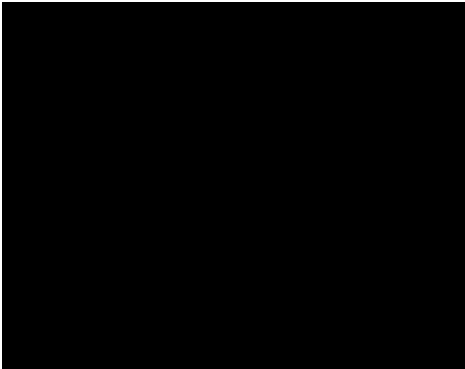
—
Architecture
José Poveda Rivera

Photography
Alberto Rojas



The touch of darkness is provided by Dekton® Domoos, a beautiful material from the Solid Collection in a matte finish, perfect for lovers of sobriety. On the other hand, chocolate brown is used on the leather high chairs and the fireplace mantel.

→ Kitchen countertop
Dekton® Domoos





05/
Kitchen
Space

Kitchen in Calacatta Gold and wood.
Classic Scandi.

Wall, countertop and island
in the same material.

The success of this project lies mainly in the use of a beautiful and timeless material reminiscent of ancient marble: Silestone® Calacatta Gold. This white surface with grey veins is used for the front cladding –featuring built-in extractor fan and alcoves–, countertop and island, thus achieving a beautiful combination of classic and modern.

In contrast to the coolness of the white and the effect of the marble, the cabinets, floor and seating around the island are all in honey-coloured wood. Finally, the designer wanted to give the kitchen a deco touch. To this end, they used black on both sides of the kitchen: on the left, the door casing is clad in Silestone® Eternal Marquina; on the right, the large window features an industrial-looking profile.



Monolithic islands.

The beauty of this project lies in the perfect symmetry between the cooking area, with its built-in extractor fan, and the large, monolithic island. All of this, clad in the same classic, timeless, beautiful material: [Silestone® Calacatta Gold](#).

→ Kitchen countertop
Silestone® Calacatta Gold, Polished finish



06/
Kitchen
Space

Boho-chic with
a classic spirit.

**Walls and countertops
in the same material.**

Functionality is the driving force behind this project. The interior designer has arranged a high bar, an industrial stove with gas hobs and a spacious sink offering unbeatable views. In the wine cellar, there is a second auxiliary sink.

To finish off the design, a sober grey tone with subtle veins was used on walls and countertop: [Silestone® Eternal Serena](#). This colour is available in standard (306 x 140 cm) and jumbo (325 x 159 cm) formats, the latter being ideal for floor and wall cladding to create a continuous space. The veins of the [Silestone® Eternal Marquina](#) island contrast beautifully with the countertop and the backsplash.





→ Cladding wall and island kitchen
Silestone® Eternal Marquina

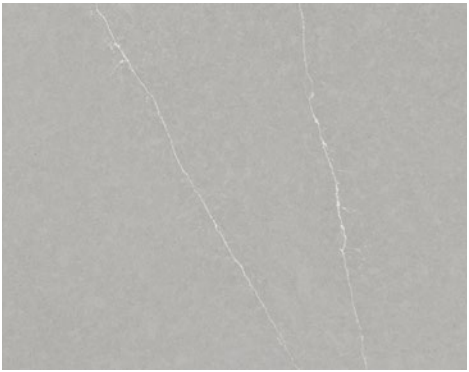


Continuous surfaces.

Using the same material for the wall and countertop results a continuous, visually attractive surface, which is both practical and easy-to-maintain thanks to the smaller number of joints.

Silestone® Eternal Serena is part of the Eternal Collection, a collection inspired by the colours of natural stone. As such, this material features delicate white veins that give elegance and warmth to the space.

→ Wall and countertop cladding
Silestone® Eternal Serena





07/
Kitchen
Space

Grey and white
for a revamped
classic style.

**The island as
a workspace.**

In this kitchen, the interior designer wanted to maximise the light coming through the skylight and the huge windows. All that natural light falls on a central island of more than 5 square metres, which is the centre of operations and focal point of the kitchen.

The impressive countertop in Silestone® Blanco Zeus, makes white the dominant colour on the island. Furthermore, the brickwork and cabinets in pickled wood are also white. In contrast to the light, the secondary areas are in grey tones, while the countertop of the cooking area and the second sink are clad in Silestone® Charcoal Soapstone, a colour featuring a black background with veins.



→ Island
Silestone® Blanco Zeus

**Brilliant
white.**

The work area is distinctly defined by the large countertop featuring a 12 cm strip. The use of Silestone® Blanco Zeus in a glossy finish, further enhances the reflection of light.

**Auxiliary
countertops.**

In contrast to the white that dominates the focal point of the kitchen, the interior designer opted for a very dark matte colour with greyish veins from the Eternal Collection for the auxiliary countertops: Silestone® Charcoal Soapstone. Inspired by soapstone, this material creates an incredible effect thanks to its depth and fluidity.

→ Wall and countertop cladding
Silestone® Charcoal Soapstone



08/
Kitchen
Space

A classy,
urban kitchen.

All in the same
material.

In this grey toned kitchen, the designer selected Silestone® Pearl Jasmine for the countertop, wall cladding and the bespoke sink unit. Despite its classic finish, when combined with the black taps and handles, and the clean, straight lines of the kitchen, a very industrial result is achieved.

In contrast, the round ball pendant lights and little gold details break the monotony of grey and add a mid-century touch to the room. The result is an elegant and urban kitchen which also perfectly integrates with the living area.



Architecture
Andre Lenza

Photography
@heliosperandio



A classic material with a modern finish.

Silestone® Pearl Jasmine, part of the Eternal Collection, is reminiscent of limestone with subtle grey veining. It is the perfect material for classic or rural kitchens, but when paired with black urban details, it works perfectly in a modern kitchen.

→ Wall cladding and countertop
Silestone® Pearl Jasmine





09/ Kitchen Space

Total White
redefined.

**The light, spaciousness
and beauty of white.**

White is the colour preferred by 90% of designers when it comes to planning a kitchen. This is a wise choice, as white can make a space look bigger while providing a sense of cleanliness and order.

In this kitchen, the interior designer has combined the countertop and island in **Silestone® White Zeus** with glossy lacquered furniture, also in white. The use of thick countertops in the cupboard area, together with the glossy lacquered furniture, add a deco touch to the kitchen.

—
Architecture
Andre Lenza

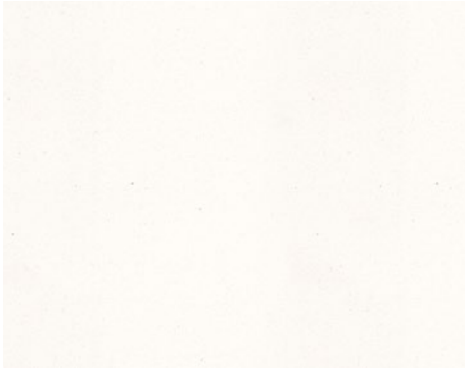
Photography
@heliosperandio



A kitchen in
Silestone® Zeus.

Silestone® White Zeus gives an impressive, well-defined look to the countertop and side strip. Its pristine appearance conveys energy and is timeless.

→ Countertop and island kitchen
Silestone® White Zeus



10/
Kitchen
Space

A contemporary
kitchen with
rustic decor.

**White and grey tones
combined with wood.**

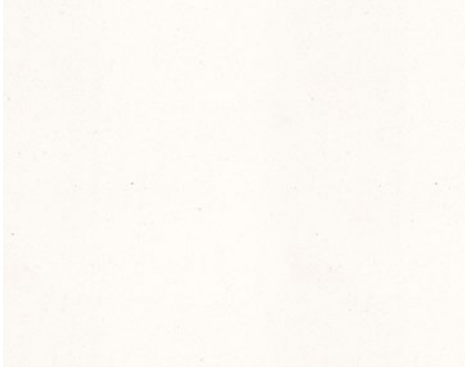
In this project, the designer found a centrepiece for the exposed wooden beam ceiling with the goal of lightening the space and highlighting the high ceilings.

Walls and furniture were selected in an unpolluted white that offered visual continuity with the also white ceiling. As an inflection point, the countertop is a light grey and the furniture around the island a dark grey, accenting everything in this social and work zone. The only concession to rustic style is found in the bar and wooden stools that connect with the ceiling beams. Everything carefully thought out for an impactful kitchen.



—
Architecture
Rocha e Rodrigues Architects

Photography
Mariana Orsi



→ Island kitchen
Silestone® White Zeus

Two different
countertops.

The island is the star of this kitchen. Here, the countertop features a polished finish in Silestone® White Zeus, which creates a strong contrast with the matte dark grey lacquered furniture.



Grey and white.

For the rest of the kitchen countertop, the interior designer selected Silestone® Kensho, a harmonious and relaxing material from the Zen collection that perfectly matches the white of the furniture.

→ Countertop kitchen
Silestone® Kensho





11/ Kitchen Space

A stunning
work surface
for keen cooks.

**A kitchen full
of character.**

In this urban style home with concrete ceilings, the aim was to create a warm, welcoming kitchen where the pleasure of cooking can be enjoyed with friends. Gardening and cooking are the two passions of the owner of this home.

With this in mind, the interior designer planned a cosy kitchen in wood, with a very pleasant living area and a stunning island with a cooking area perfect for cooking for guests.

As for the owner's second great passion, gardening, it is reflected in the plants hanging from the ceiling - as if it were an urban garden - and in the many others scattered throughout the rest of the kitchen. Wood and plants meet for a very personal kitchen

Architecture
Rocha e Rodrigues Architects

Photography
Mariana Orsi

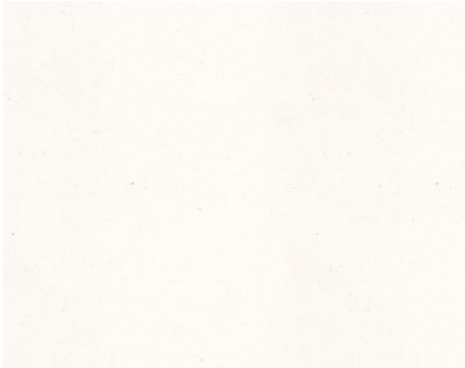


A stunning island in white

Silestone® White Zeus was the color chosen to clad this extra-large island with integrated hob and sink.

In this kitchen, all the attention is focused on the island thanks to its impressive, glossy finish.

→ Countertop kitchen
Silestone® Blanco Zeus





12/
Kitchen
Space

Order and harmony
in this stunning space
connected to the
rest of the house.

The kitchen is visually separated from the rest of the house by a wall of cabinets, hiding the electrical appliances. In this kitchen, the extra-large island features a built-in sink and extra space for the dining area. In order to achieve visual continuity in such an open space, both the island and countertop are made of the same material, Dekton® Aura 15.



Island in Dekton® Aura 15.

The designer chose Dekton® Aura 15 for the island and countertop. The use of a classic material with veins in such a well-balanced kitchen brings movement and personality to the room.

→ Countertop kitchen Dekton® Aura 15



13/ Kitchen Space

Reinventing the kitchen to make it the heart of the home.

Cubic lines and a play of planes.

For this kitchen design, the owner wanted a tidy and functional space that would blend harmoniously with the classic style of their living room furniture. Based on that request, the designer planned a large white island with an integrated sink and cooking area.

A robust, horizontal surface in Dekton® Sirius outlines the bar and then continues along the wall, helping to enlarge the space. The steel cooker hood in a double-cube design above the hob finishes off the room. The result is a kitchen carefully designed, in which nothing has been left to chance.



—
Architecture
Muxacra

Photography
Alberto Rojas



→ Island kitchen
Dekton® Bergen (X-Gloss)

The island as
a sculpture.

To bring some movement and character to this kitchen, the designer chose Dekton® Bergen in a polished finish for the island. This material, from the Stonika XGloss Collection, is inspired by Portobello stone.

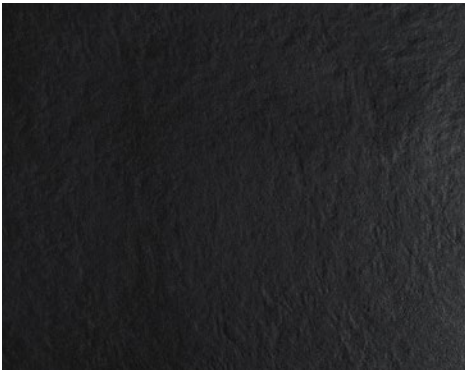


A stunning black bar.

In this kitchen, Dekton® Sirius bar extends across the island and then continues along the wall. This black textured colour, without veins, contrasts beautifully with the traditional colour of Dekton® X-Gloss Bergen.

Furthermore, Dekton® Sirius blends in perfectly with other appliances such as taps, ceiling lamps and stools, also in black.

→ Island kitchen, Dekton® Sirius



Silestone® Integrity Sinks

Full range
of products.

Without joints, cracks, or limits. Integrity wants to unite your kitchen with surfaces don't have an ending or beginning. Integrity brings a sense of unity and perfect integration with the rest of the elements on your countertop. A single piece available in a range of Silestone® colors, so your kitchen is endless.



Available in
a wide variety
of colours.



Check available colours
at [cosentino.com](https://www.cosentino.com)

Silestone® Integrity offers all the features
include that has made of Silestone® the best
product of the market: high scratch
resistance, durability and of course the
highest performance in terms of design.



**Integrity
Due S**

Silestone®

Outer measure 40 x 37 x 17.5 cm
Inner measure 37 x 34 x 15.5 cm

Radius between walls 6.5 cm
Radius between bottom and sides 0.3 cm



**Integrity
One**

Silestone®

Outer measure 54 x 44 x 17.5 cm
Inner measure 51 x 41 x 15.5 cm

Radius between walls 13 cm
Radius between bottom and sides 0.3 cm



**Integrity
Due L**

Silestone®

Outer measure 54 x 40 x 17.5 cm
Inner measure 51 x 37 x 15.5 cm

Radius between walls 6.5 cm
Radius between bottom and sides 0.3 cm



Integrity Q

Silestone®

Outer measure 55 x 44 x 17.5 cm
Inner measure 51 x 41 x 15.5 cm

Radius between walls 3 cm
Radius between bottom and sides 3 cm



**Integrity
Due XL**

Silestone®

Outer measure 70 x 46.5 x 23.5 cm
Inner measure 67 x 43,5 x 21 cm

Radius between walls 6.5 cm
Radius between bottom and sides 0.3 cm



**Integrity
Top**

Silestone®

Outer measure 54 x 40 x 17.5 cm
Inner measure 51 x 37 x 15.5 cm

Radius between walls 6.5 cm
Radius between bottom and sides 0.3 cm

Furniture

Surfaces integrated with
unique and timeless
furniture design.

**Dekton®,
the furniture’s skin**

It’s on-trend to use the same cladding on the kitchen or bathroom countertop to clad drawers and wardrobes. This allows you to achieve continuous and clean surfaces where joints disappear, creating a monolithic effect.

This decor trend is only possible with the technological evolution of materials. 8 mm and 12 mm thicknesses are ideal for tables and coffee tables. The slim 4 mm thickness format allows kitchen and bathroom furniture cladding, and also answer the creative restlessness of the designer: table tops for the interior and exterior completely customised and exclusive.



Furniture

Unprecedented durability and design.

Cosentino® surfaces redefine furniture thanks to their versatility, durability, and beauty.



Dekton® Slim, 4 mm thickness makes it an incredibly easy material to work with. Its light weight and properties make it the ideal solution to clad all types of furniture and adapt to any aesthetic proposal: in white and gold, in black and chrome...

Dekton® Slim has all the advantages and properties of Dekton, high resistance to scratches and stains.

→ Kitchen furniture cladding, Dekton® Slim Zenith



Ideal for cladding wardrobe doors and kitchens

Dekton® Slim Zenith and Dekton® Slim Opera were the two tones chosen to hide these drawers under the stairs or on the front of the kitchen. The result is a camouflaged surface of this practical storage solution, without compromising the aesthetic of the space.

→ Kitchen furniture cladding, Dekton® Slim Opera



→ Kitchen furniture cladding, Dekton® Slim Kreta



Cabinets integrated into the island

Dekton® Slim is the perfect solution to clad drawers in the kitchen island, achieving a monolithic effect.

For this industrial project, the designer chose Dekton Trilium: a finish inspired by volcanic rock with a touch of oxidation, which adds great character to the space.

Once again, Slim's 4 mm thickness allows the creation of an island totally integrated with drawers.



→ Kitchen furniture cladding, Dekton® Slim Trilium



→ Table top, Dekton® Laos



→ Table top, Dekton® Laos



→ Table top, Sensa by Cosentino® Orinoco



Unique and marked
veins in small surfaces.

With Sensa by Cosentino® the designer can run with his most creative ideas and choose natural materials with pronounced veining, such as the color Orinoco.

Sensa by Cosentino® is protected natural stone. The designer can choose the part of the stone they want for their design. This has a particular quality: there will never be a table like this one.

—
Design
Cosentino®
Photography
Francisco Carrasco



→ Table, Dekton Aura



—
Architecture
Maurício Nóbrega

Large
cubic blocks

Dekton® allows you to clad large furniture pieces as if they were blocks of stone straight out of the quarry. In this space, the designer used Dekton® Aura 15, in its large format version, to create a strong centre table of extraordinary dimensions.



Perfect match with
dining tables

If there is one place where Dekton® properties really stand out, it is in the design of a dining table, and if they are really large then all the better!

The designer chooses the table structure, the chairs that will complement it, and the colour of Dekton® that will be used on the structure from a vast array of finishes, depending on the style desired.

You can opt for a continuous surface measuring 3 metres long and 4, 8 or 12 millimetres thick and also select the slab and the cut so that the veining, texture and finish are the most suitable for your design.

Designed by:
Stacey Leong Interiors

Architects:
Park Associates

Photography:
Khoogj



→ Table top, Dekton® Kelya



→ Table top, Dekton® Kelya



Indoor & Outdoor.

Another advantage of Dekton® table cladding is that it works for both interior and exterior. Its high resistance to UV rays and changes in temperature make it the perfect material for outdoor furniture, avoiding degradation over time.

→ Tablero mesa, Dekton® Aura 15



**Continuous veining
composition**

The luminosity and neutrality of tone of Dekton® Aura are poured onto a personalised canvas, characterised by a fluid continuity of grain between the different pieces that make up the table.

**Total adaptability for
modular systems.**

The lightness of Dekton® in its 4, 8, and 12 mm formats allows it to adapt to modular systems or table extensions and create compositions of high esthetic and functional value.



→ Table top, Dekton® Trilium



→ Table top, Silestone® Eternal Statuario




**Ideal for
work spaces**

The properties of Dekton® and Silestone® make these materials the perfect choice for work spaces. With their endless possibilities in terms of finishes and designs, they add a deco touch to these spaces and create attractive and functional tables suitable to work from home.

COSENTINO

COSENTINO ISRAEL

רחוב נחשון 33 / פתח תקווה (סגולה), / מיקוד 4919602
טלפון: 03-5550999 / פקס: 03-5544199
צור קשר: israel@cosentino.com / צור קשר: 
www.cosentino.com



* To obtain more information about hues with NSF certificate please visit www.nsf.org

** The Carbon Neutral certification only applies to the Sunlit Days and Onirika Series.