

Quality standards for Silestone® slabs

SILESTONE® SLABS
QUALITY STANDARDS



Index

Introduction	4
Objective	4
What is Silestone®?	4
Finish	4
Polished	4
Suede	4
Volcano	4
Format	5
Thickness	6
Flatness	7
Logo on the back of the slab	8
Slab identification	10
Aesthetic considerations	12
Solid colours with very small granulometry	12
Marbled colours	12
Colours with recycled material such as mirror or glass	13
Colours with a lot of depth and transparency	13
Distribution of material	14

Introduction

Objective

The Silestone® standard of quality aims to establish the basis of product quality, taking into account its format, visual appearance and composition, as well as the technical specifications of the product.

Silestone® slabs are individually checked at the final stage of the production process in order to detect any deviation from the quality standard set out in this document.

What is Silestone®?

Silestone® is the most sustainable and cutting-edge hybrid surface or premium minerals, quartz and recycled materials on the market, manufactured with the exclusive and innovative HybriQ® technology.

Silestone® is a very stable material in terms of colour and design, although there are slight variations due to the use of raw materials of natural origin and its manufacturing process.

Silestone® offers a wide variety of colours, finishes and formats in its portfolio. All under the same philosophy and quality standards.

Finish

Silestone® offers different finishes for its applications: Polished, Suede and Volcano.



Traditional finish in which colours and reflections are intensified.



Maintaining the same characteristics, it presents a surface that transmits a unique sensory perception to the touch with a lower gloss than the traditional finish.



Being a rough surface, it presents a rustic but soft texture at the same time.

Format

Silestone® produces in two slab formats: Standard and Jumbo.



→ Image 1: Silestone® formats.

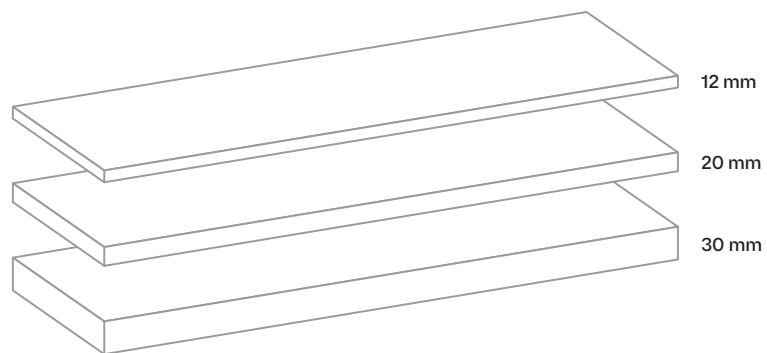
N Standard Format (up to 3,060 x 1,400 mm [120" x 55"]).

J Jumbo Format (up to 3,250 x 1,590 mm [120" x 55"]).

In addition to this, Silestone® slabs are billed according to their useful surface area, with a maximum and minimum range established for each format:

Format	Minimum	Maximum
Standard	2.72 m² [29.27 sqft]	4.31 m² [46.39 sqft]
Jumbo	3.88 m² [41.76 sqft]	5.20 m² [55.97 sqft]

Thickness



→ Image 2: Silestone® thicknesses.

Silestone® is manufactured in three different thicknesses: 12 mm, 20 mm and 30 mm; designed for worktops, flooring and interior cladding.

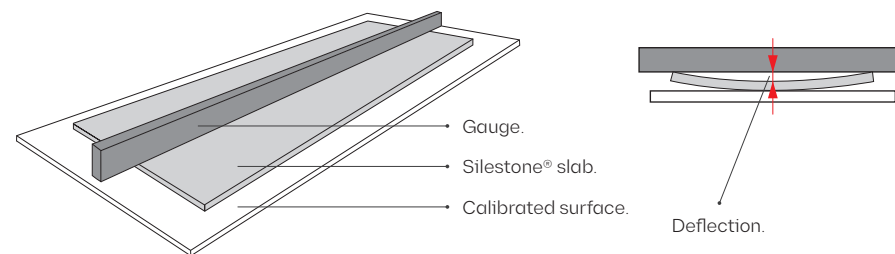
In addition, it will have a tolerance of ± 1 mm with respect to its nominal thickness in all thicknesses, which means that, for example, a slab with a specified thickness of 12 mm can have a thickness of either 13 mm or 11 mm.

Flatness

Silestone® slabs must comply, both in Standard and Jumbo format, with the following planarity:

→ Transversal < 3 mm.

→ Longitudinal < 5 mm.



→ Image 3: Slab flatness.

Logo on the back of the slab

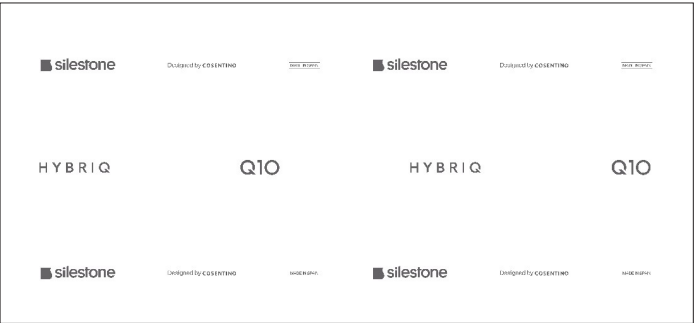
The logos of the brand and the technology used for its formulation are placed on the back of the slab:



→ Image 4: Silestone® HybriQ+® Q10 logo on the back of the slab.



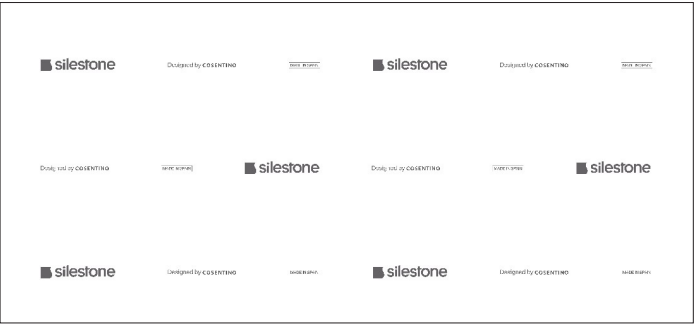
→ Image 5: Silestone® HybriQ+® Q50 logo on the back of the slab.



→ Image 6: Silestone® HybriQ® Q10 logo on the back of the slab.



→ Image 7: Silestone® HybriQ® Q50 logo on the back of the slab.



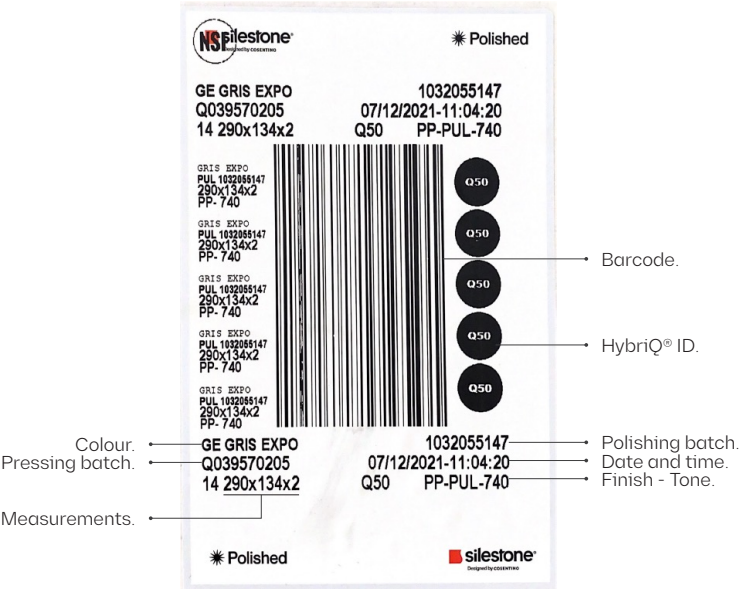
→ Image 8: Silestone® logo on the back of the slab.

Slab identification

Each Silestone® slab has an identification label attached to it. It shows:

- Colour name.
- Pressing batch.
- Measurements.

- Barcode.
- Polishing batch.
- Date and time.
- Finish - Tone.
- HybriQ® ID.



→ Image 8: Batch ID label.



→ Image 10: Safety label.

All Silestone® slabs must bear the identification label with the slab information (Image 9) and the safety label (Image 10).



→ Silestone®, as it is made up of 90% natural raw materials, may have slight variations in tone.

→ For works where more than one slab is used, it must ALWAYS be identified that the tone is the same in all of them, before any lay-out or cutting.

→ The tone, indicated by a three-digit number, can be found on the label shown above. It is also recommended that, as far as possible, the production date (including the time) be checked, as the more consecutive the slabs are, the more we can ensure that there is no difference between them.

→ It is advisable to make a second visual check of the pieces, once they have been cut, to make doubly sure.

Aesthetic considerations



→ Please refer to the *Silestone® Countertops Design & Installation Manual* for more information on working with slabs with 'Random Patterns'.

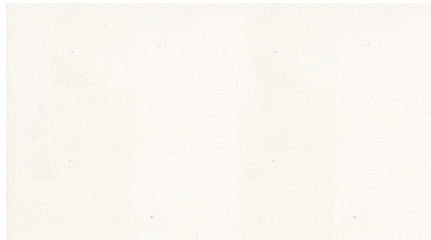
The composition of natural minerals makes Silestone® a material that is more than 90% of its composition of natural origin.

This implies certain design considerations that must be taken into account.

By design typology, they can be grouped into:

Solid colours with very small granulometry

These colours show homogeneity over their entire surface and colour consistency. Although it is true that the natural mineral used in their composition may present certain grains of different colour (mainly black, green or white).



→ Image 11: Silestone® Blanco Zeus.

Marbled colours

Although the Silestone® process offers great design stability compared to natural stone, each slab is unique in the amount of detail it features.

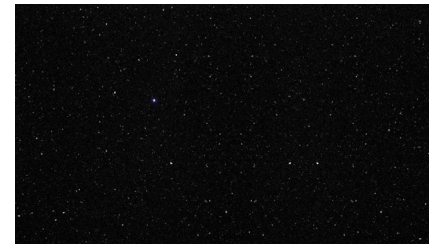
The thickness of the veins, the position of the veins or the definition of the graphic can vary subtly from one slab to another.



→ Image 12: Silestone® Et Noir.

Colours with recycled material such as mirror or glass

Silestone® is characterised by its commitment to sustainability. On the way to achieving this objective, it is using mirror and glass of recycled origin whose characteristic feature is the presence of green and red crystals and/or mirrors.



→ Image 13: Silestone® Stellar Night.

Colours with a lot of depth or transparency

Transparency and depth mean that we can see very clearly the minerals used in the manufacture, which means that we will see any grains of different colour that may be contained in the mass. These grains will always be of a subtle, but visible, shade.



→ Image 14: Silestone® Ocean Jasper F.

Distribution of material



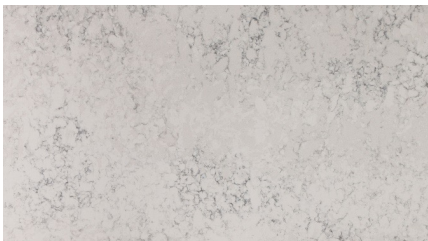
→ Please refer to the *Silestone® Countertops Design & Installation Manual* for more information on working with slabs with 'Random Patterns'.

Silestone® has a range of colours with heterogeneous mass distributions. This means that there is no uniformity of colour across the entire slab.

Currently, the colours belonging to this group are as follows, but this may change over time.

For more information on this colours group, please consult the sales team.

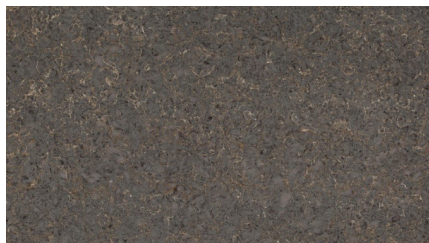
- Helix.
- Ocean Storm.
- Copper Mist.
- Ocean Jasper F.
- Pietra.



→ Image 15: Silestone® Helix.



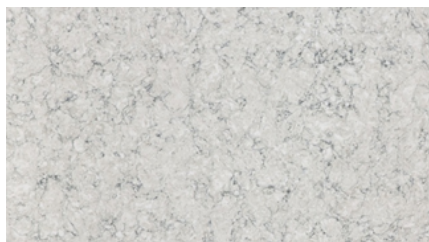
→ Image 16: Silestone® Ocean Storm.



→ Image 17: Silestone® Copper Mist.



→ Image 18: Silestone® Ocean Jasper F.



→ Image 19: Silestone® Pietra.

COSENTINO®

Ctra. Baza a Huercal-Overa, km 59 / 04850
Cantoria - Almeria (Spain) / Tel.: +34 950 444 175
info@cosentino.com / www.cosentino.com



→ These certificates apply to
Dekton® and Silestone®

→ Find information on NSF-certified
colours at www.nsf.org

REV. 06 - 02/2024

PRINT DATE: FEBRUARY 2024