

TITLE:

DETAIL KEY

DRAWN BY:

CC

DATE:

05.28.2015

SYSTEM

DEKTON CONCEALED UNDERCUT ANCHOR SYSTEM

SCALE:

NTS

DETAIL #:

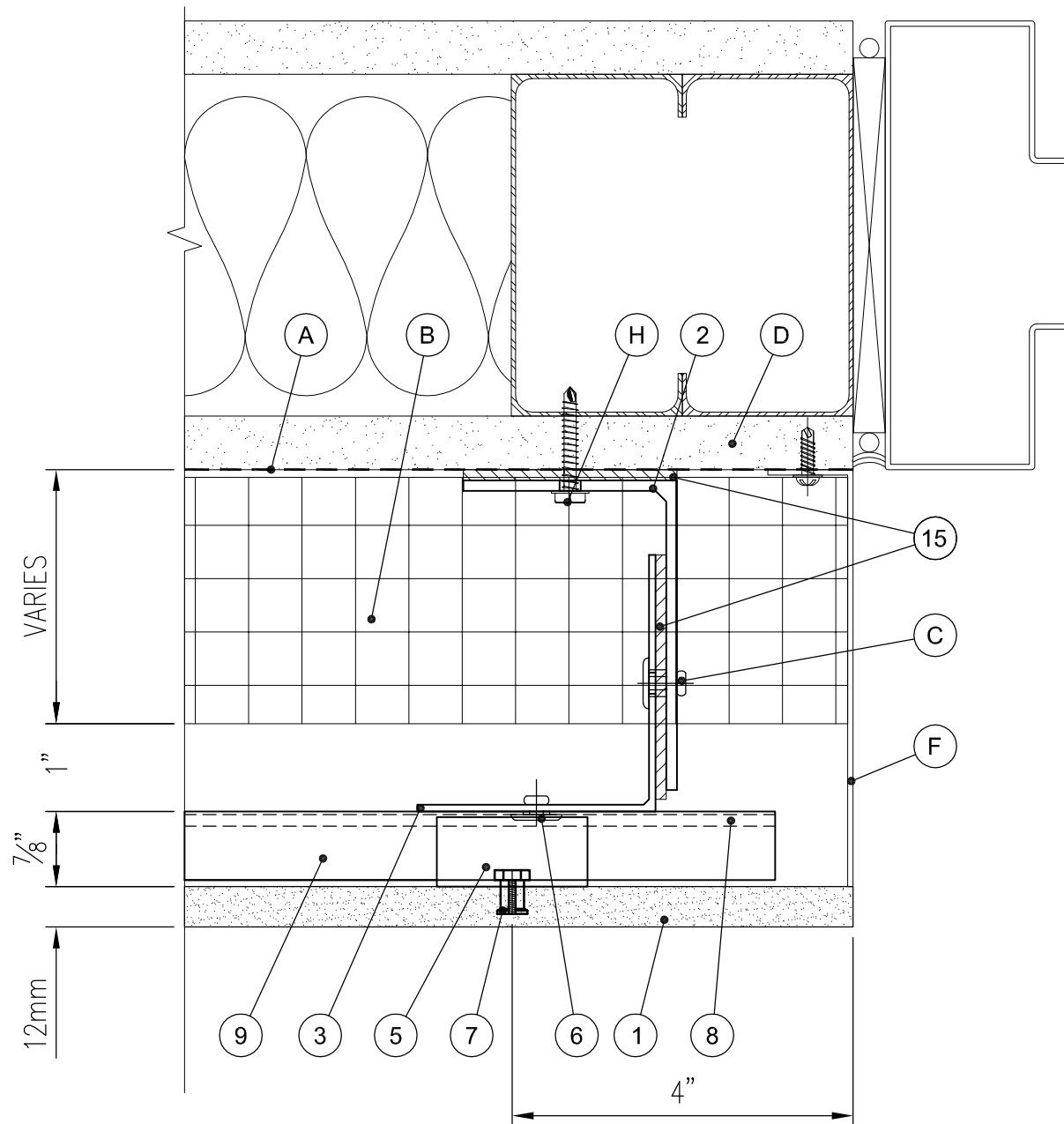
—

APPROVED BY:

SG

SHEET:

1 OF 17



No.	DESCRIPTION
1	DEKTON PANEL (12MM) *
2	L-BRACKET
3	L-PROFILE (CONT.)
4	ADJUSTABLE BRACKET
5	FIXED BRACKET
6	RIVET FASTENER
7	KEIL ANCHOR (7mm) *
8	RAIL ANCHOR
9	RAIL
10	SYSTEM CLOSURE
11	VENT SCREEN
12	CLIP ANCHOR
13	CORNER CLOSURE
14	JOINT CLOSURE
15	THERMAL ISOLATOR

A	WRB
B	MINERAL WOOL
C	RIVET
D	SHEATHING
E	Z-GIRT
F	SYSTEM CLOSURE
G	VENT SCREEN
H	PERIMETER ANCHOR
J	EPOXY

Notes:

Items shown represent assemblies tested by Cosentino or testing submitted by third-parties using Cosentino products.

Facade testing includes a combination of test methods. A minimum of ASTM E330 testing and ASTM C1354 was performed on assemblies represented on our website as mechanically attached facade solutions. Please contact your local representative to learn more.

Local jurisdictions may have specific requirements not represented in these details. Please contact your local code official to determine the requirements for your specific project. Cosentino has a host of tools and data to address specific project requirements once they are known.

Fastener (H) to be project specific and determined by project engineer. Considerations include wall type and project specific engineering needs.

Keil Anchor (7) tested with 7 mm Anchors and bolt to fit anchor and thickness of aluminum.



TITLE:

1 DOOR JAMB

DRAWN BY:

CC

DATE:

05.28.2015

SYSTEM

DEKTON CONCEALED UNDERCUT ANCHOR SYSTEM

SCALE:

1/2" = 1"

DETAIL #:

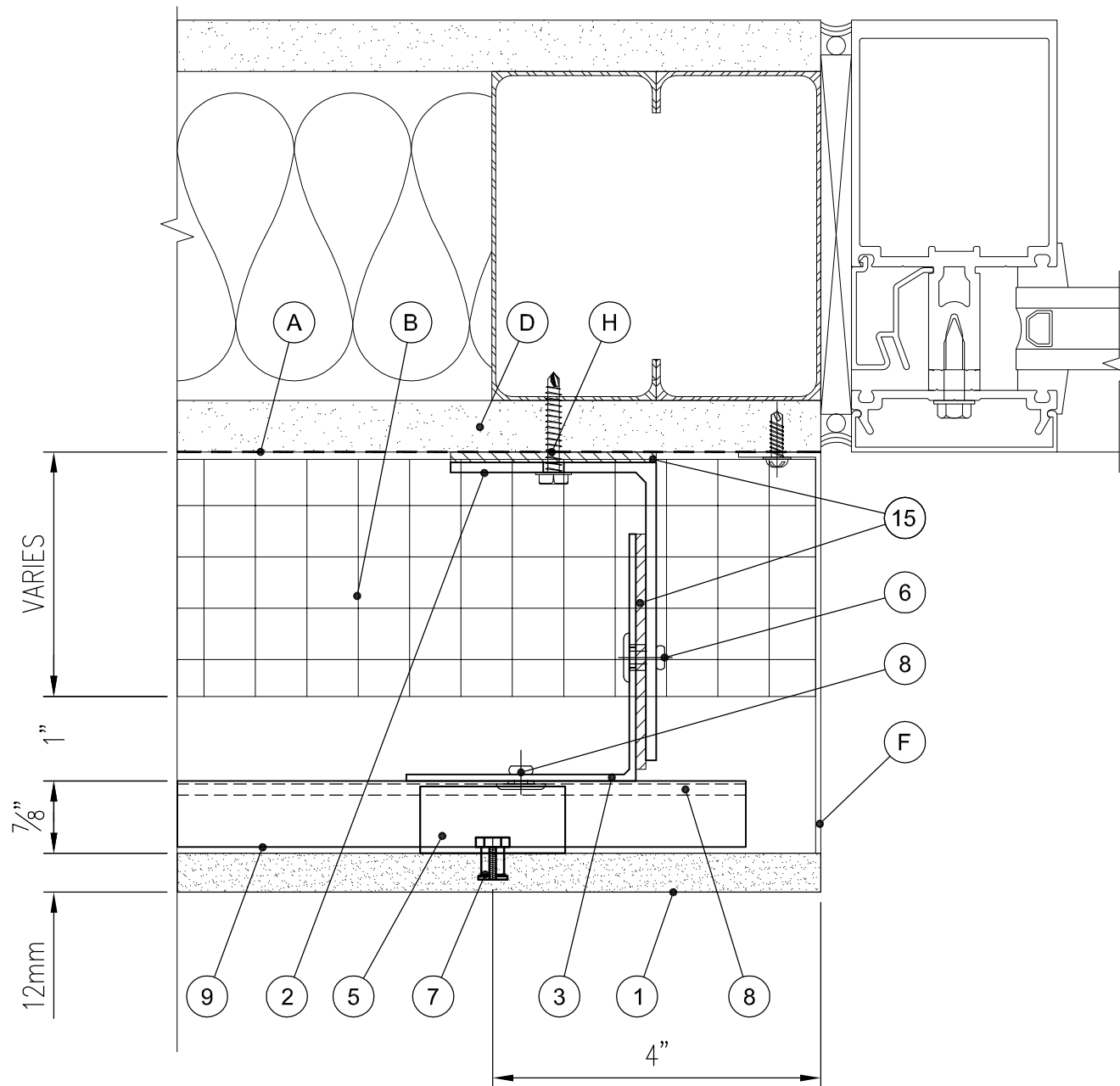
1

APPROVED BY:

SG

SHEET:

2 OF 17



No.	DESCRIPTION
1	DEKTON PANEL (12MM) *
2	L-BRACKET
3	L-PROFILE (CONT.)
4	ADJUSTABLE BRACKET
5	FIXED BRACKET
6	RIVET FASTENER
7	KEIL ANCHOR (7mm) *
8	RAIL ANCHOR
9	RAIL
10	SYSTEM CLOSURE
11	VENT SCREEN
12	CLIP ANCHOR
13	CORNER CLOSURE
14	JOINT CLOSURE
15	THERMAL ISOLATOR

A	WRB
B	MINERAL WOOL
C	RIVET
D	SHEATHING
E	Z-GIRT
F	SYSTEM CLOSURE
G	VENT SCREEN
H	PERIMETER ANCHOR
J	EPOXY

Notes:

Items shown represent assemblies tested by Cosentino or testing submitted by third-parties using Cosentino products.

Facade testing includes a combination of test methods. A minimum of ASTM E330 testing and ASTM C1354 was performed on assemblies represented on our website as mechanically attached facade solutions. Please contact your local representative to learn more.

Local jurisdictions may have specific requirements not represented in these details. Please contact your local code official to determine the requirements for your specific project. Cosentino has a host of tools and data to address specific project requirements once they are known.

Fastener (H) to be project specific and determined by project engineer. Considerations include wall type and project specific engineering needs.

Keil Anchor (7) tested with 7 mm Anchors and bolt to fit anchor and thickness of aluminum.



TITLE:

2 WINDOW JAMB

DRAWN BY:

CC

DATE:

05.28.2015

SYSTEM

DEKTON CONCEALED UNDERCUT ANCHOR SYSTEM

SCALE:

1/2" = 1"

DETAIL #:

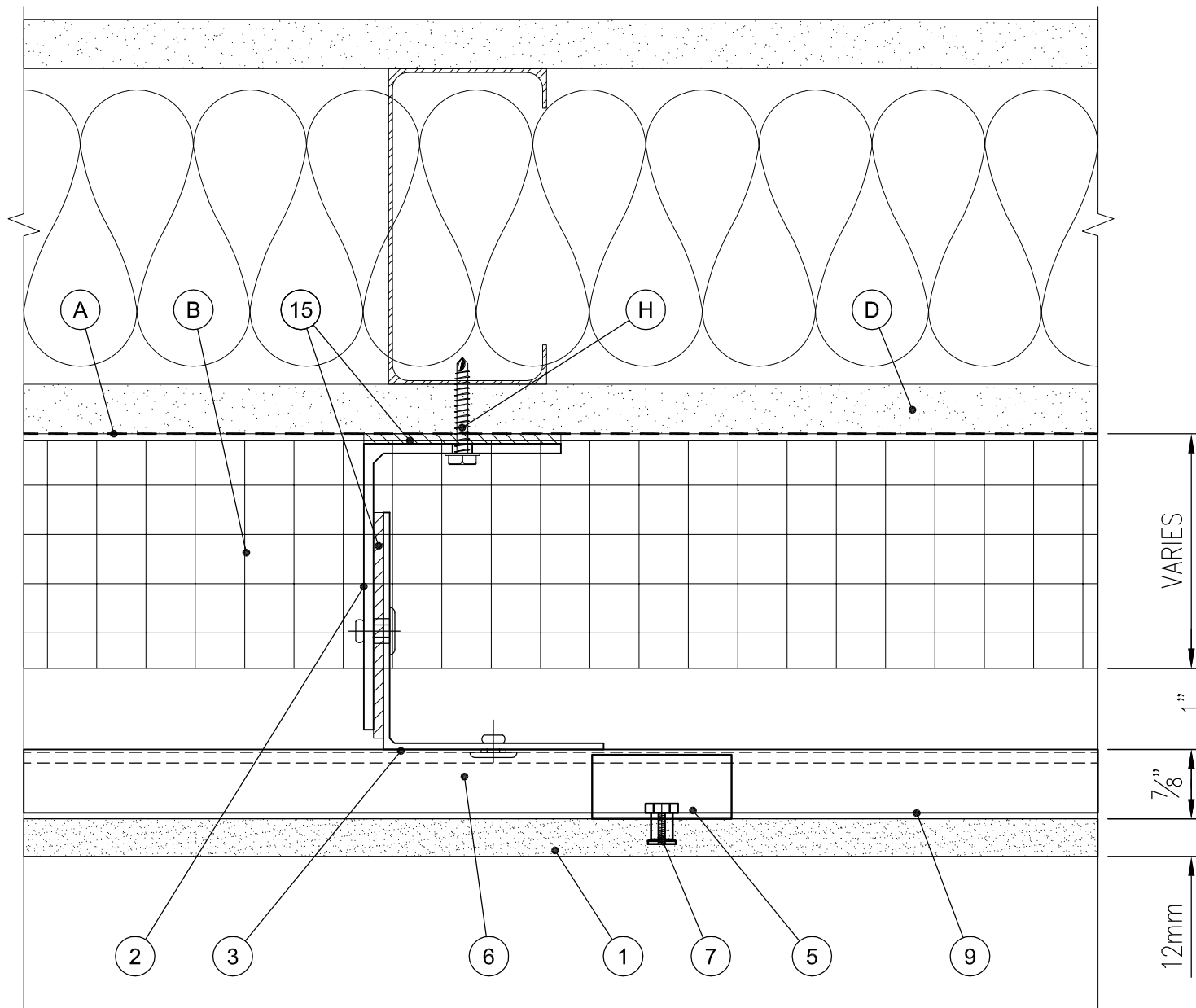
2

APPROVED BY:

SG

SHEET:

3 OF 17



No.	DESCRIPTION
1	DEKTON PANEL (12MM) *
2	L-BRACKET
3	L-PROFILE (CONT.)
4	ADJUSTABLE BRACKET
5	FIXED BRACKET
6	RIVET FASTENER
7	KEIL ANCHOR (7mm) *
8	RAIL ANCHOR
9	RAIL
10	SYSTEM CLOSURE
11	VENT SCREEN
12	CLIP ANCHOR
13	CORNER CLOSURE
14	JOINT CLOSURE
15	THERMAL ISOLATOR

A	WRB
B	MINERAL WOOL
C	RIVET
D	SHEATHING
E	Z-GIRT
F	SYSTEM CLOSURE
G	VENT SCREEN
H	PERIMETER ANCHOR
J	EPOXY

Notes:

Items shown represent assemblies tested by Cosentino or testing submitted by third-parties using Cosentino products.

Facade testing includes a combination of test methods. A minimum of ASTM E330 testing and ASTM C1354 was performed on assemblies represented on our website as mechanically attached facade solutions. Please contact your local representative to learn more.

Local jurisdictions may have specific requirements not represented in these details. Please contact your local code official to determine the requirements for your specific project. Cosentino has a host of tools and data to address specific project requirements once they are known.

Fastener (H) to be project specific and determined by project engineer. Considerations include wall type and project specific engineering needs.

Keil Anchor (7) tested with 7 mm Anchors and bolt to fit anchor and thickness of aluminum.



TITLE:

3 VERTICAL MID PANEL

DRAWN BY:

CC

DATE:

05.28.2015

SYSTEM

DEKTON CONCEALED UNDERCUT ANCHOR SYSTEM

SCALE:

1/2" = 1"

DETAIL #:

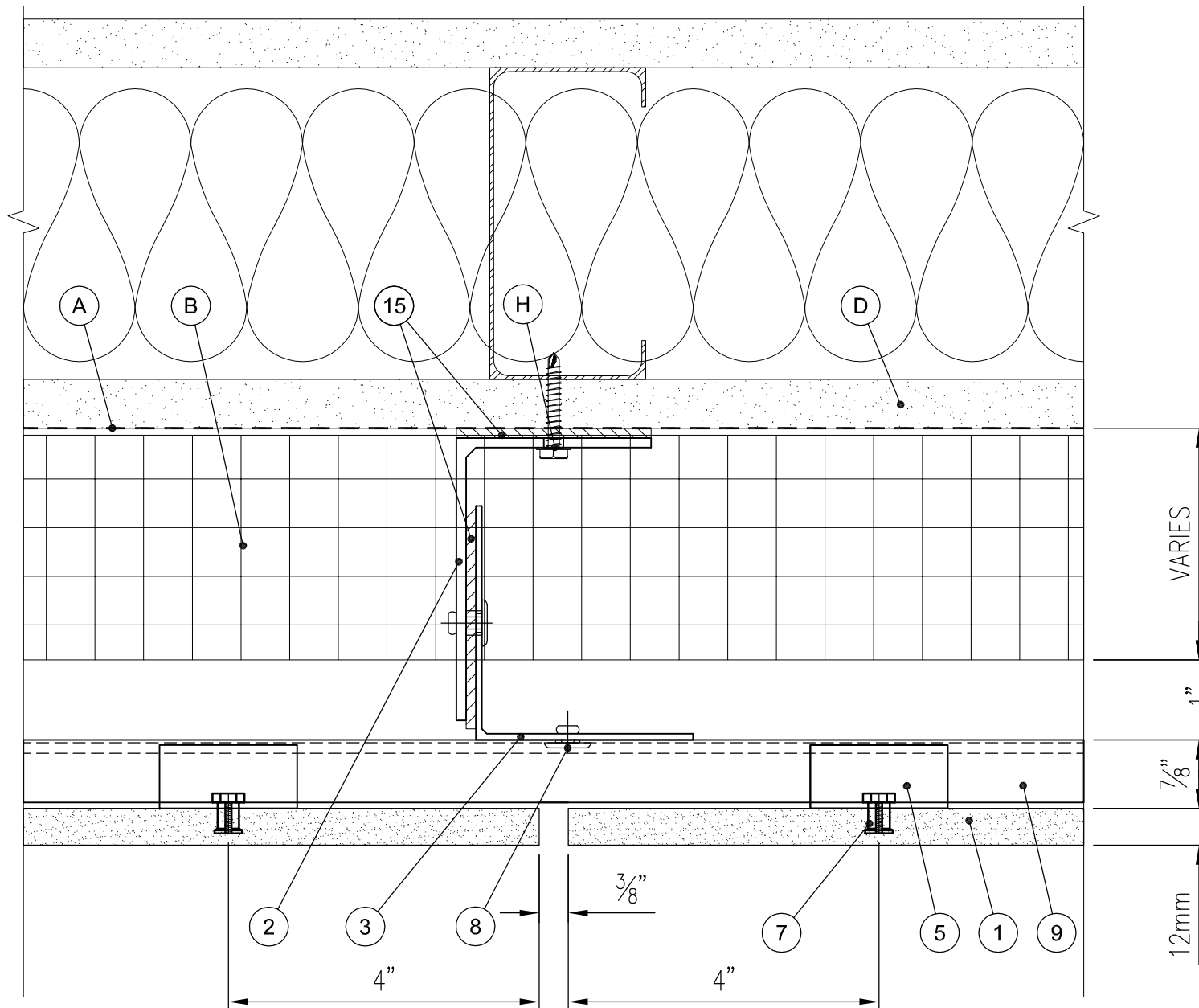
3

APPROVED BY:

SG

SHEET:

4 OF 17



No.	DESCRIPTION
1	DEKTON PANEL (12MM) *
2	L-BRACKET
3	L-PROFILE (CONT.)
4	ADJUSTABLE BRACKET
5	FIXED BRACKET
6	RIVET FASTENER
7	KEIL ANCHOR (7mm) *
8	RAIL ANCHOR
9	RAIL
10	SYSTEM CLOSURE
11	VENT SCREEN
12	CLIP ANCHOR
13	CORNER CLOSURE
14	JOINT CLOSURE
15	THERMAL ISOLATOR

A	WRB
B	MINERAL WOOL
C	RIVET
D	SHEATHING
E	Z-GIRT
F	SYSTEM CLOSURE
G	VENT SCREEN
H	PERIMETER ANCHOR
J	EPOXY

Notes:

Items shown represent assemblies tested by Cosentino or testing submitted by third-parties using Cosentino products.

Facade testing includes a combination of test methods. A minimum of ASTM E330 testing and ASTM C1354 was performed on assemblies represented on our website as mechanically attached facade solutions. Please contact your local representative to learn more.

Local jurisdictions may have specific requirements not represented in these details. Please contact your local code official to determine the requirements for your specific project. Cosentino has a host of tools and data to address specific project requirements once they are known.

Fastener (H) to be project specific and determined by project engineer. Considerations include wall type and project specific engineering needs.

Keil Anchor (7) tested with 7 mm Anchors and bolt to fit anchor and thickness of aluminum.



TITLE:

4 VERTICAL PANEL JOINT

DRAWN BY:

CC

DATE:

05.28.2015

SYSTEM

DEKTON CONCEALED UNDERCUT ANCHOR SYSTEM

SCALE:

1/2" = 1"

DETAIL #:

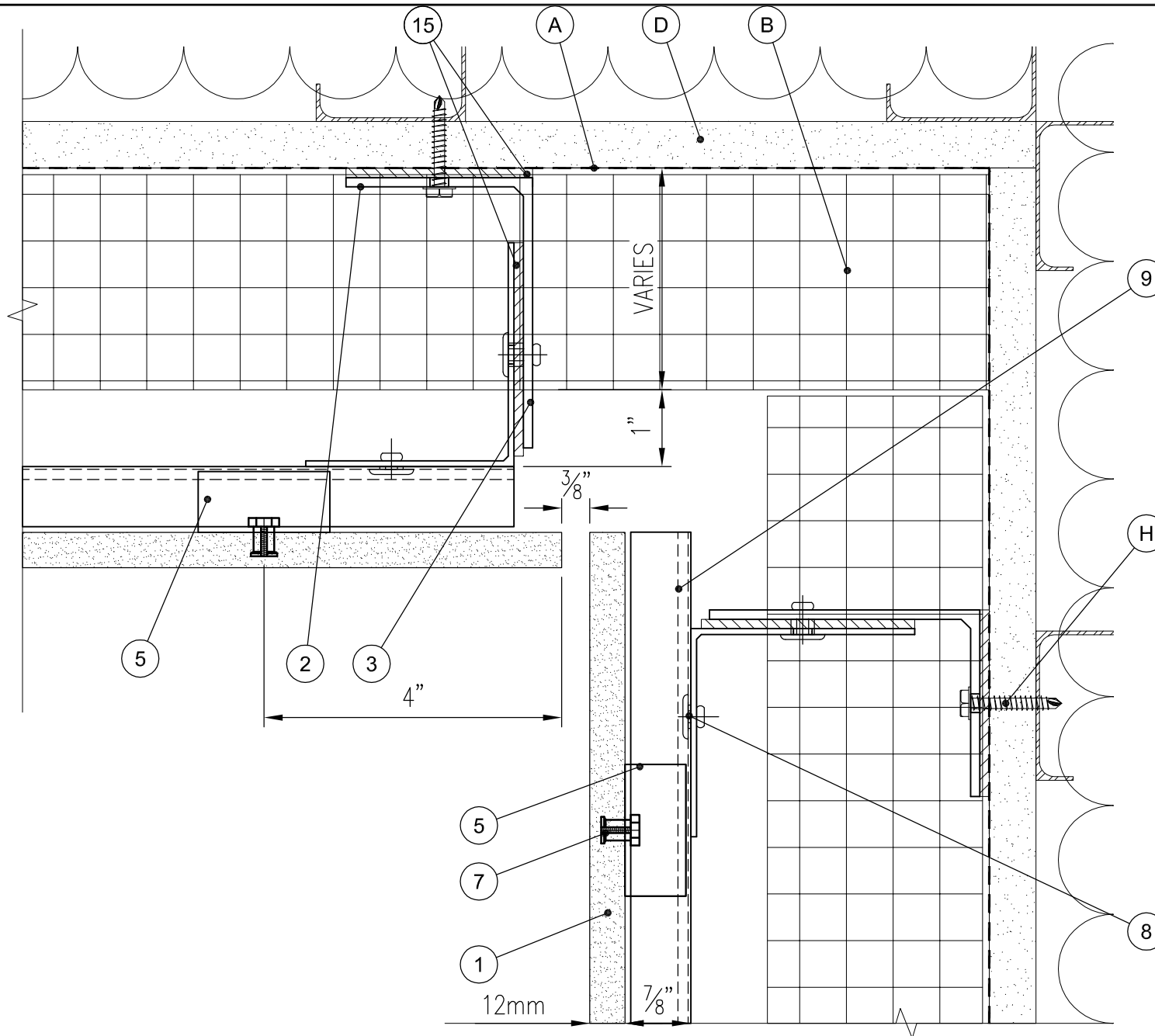
4

APPROVED BY:

SG

SHEET:

5 OF 17



No.	DESCRIPTION
1	DEKTON PANEL (12MM) *
2	L-BRACKET
3	L-PROFILE (CONT.)
4	ADJUSTABLE BRACKET
5	FIXED BRACKET
6	RIVET FASTENER
7	KEIL ANCHOR (7mm) *
8	RAIL ANCHOR
9	RAIL
10	SYSTEM CLOSURE
11	VENT SCREEN
12	CLIP ANCHOR
13	CORNER CLOSURE
14	JOINT CLOSURE
15	THERMAL ISOLATOR

A	WRB
B	MINERAL WOOL
C	RIVET
D	SHEATHING
E	Z-GIRT
F	SYSTEM CLOSURE
G	VENT SCREEN
H	PERIMETER ANCHOR
J	EPOXY

Notes:

Items shown represent assemblies tested by Cosentino or testing submitted by third-parties using Cosentino products.

Facade testing includes a combination of test methods. A minimum of ASTM E330 testing and ASTM C1354 was performed on assemblies represented on our website as mechanically attached facade solutions. Please contact your local representative to learn more.

Local jurisdictions may have specific requirements not represented in these details. Please contact your local code official to determine the requirements for your specific project. Cosentino has a host of tools and data to address specific project requirements once they are known.

Fastener (H) to be project specific and determined by project engineer. Considerations include wall type and project specific engineering needs.

Keil Anchor (7) tested with 7 mm Anchors and bolt to fit anchor and thickness of aluminum.



TITLE:

5 INSIDE CORNER

DRAWN BY:

CC

DATE:

05.28.2015

SYSTEM

DEKTON CONCEALED UNDERCUT ANCHOR SYSTEM

SCALE:

1/2" = 1"

DETAIL #:

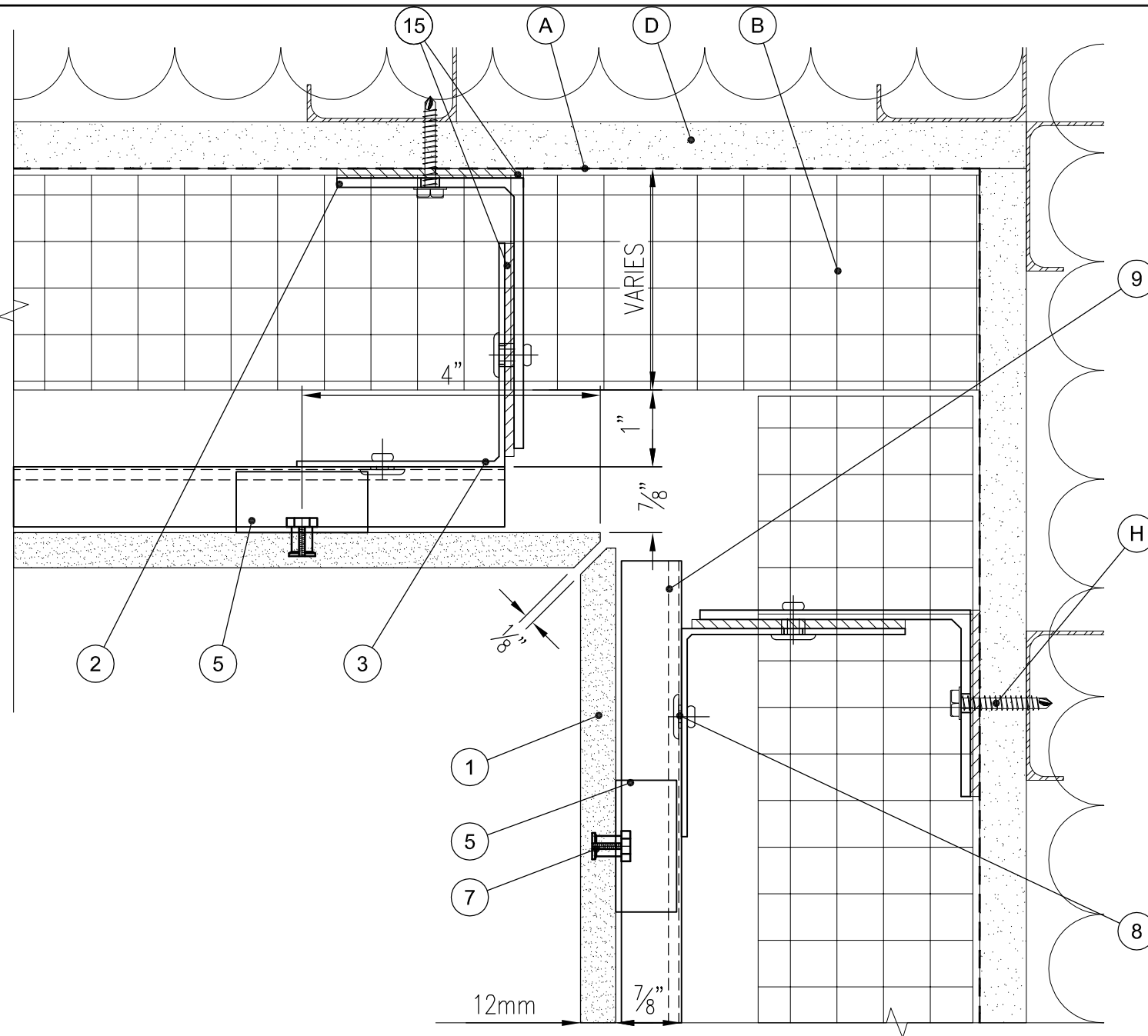
5

APPROVED BY:

SG

SHEET:

6 OF 17



No.	DESCRIPTION
1	DEKTON PANEL (12MM) *
2	L-BRACKET
3	L-PROFILE (CONT.)
4	ADJUSTABLE BRACKET
5	FIXED BRACKET
6	RIVET FASTENER
7	KEIL ANCHOR (7mm) *
8	RAIL ANCHOR
9	RAIL
10	SYSTEM CLOSURE
11	VENT SCREEN
12	CLIP ANCHOR
13	CORNER CLOSURE
14	JOINT CLOSURE
15	THERMAL ISOLATOR

A	WRB
B	MINERAL WOOL
C	RIVET
D	SHEATHING
E	Z-GIRT
F	SYSTEM CLOSURE
G	VENT SCREEN
H	PERIMETER ANCHOR
J	EPOXY

Notes:

Items shown represent assemblies tested by Cosentino or testing submitted by third-parties using Cosentino products.

Facade testing includes a combination of test methods. A minimum of ASTM E330 testing and ASTM C1354 was performed on assemblies represented on our website as mechanically attached facade solutions. Please contact your local representative to learn more.

Local jurisdictions may have specific requirements not represented in these details. Please contact your local code official to determine the requirements for your specific project. Cosentino has a host of tools and data to address specific project requirements once they are known.

Fastener (H) to be project specific and determined by project engineer. Considerations include wall type and project specific engineering needs.

Keil Anchor (7) tested with 7 mm Anchors and bolt to fit anchor and thickness of aluminum.



TITLE:

5a INSIDE MITER CORNER

DRAWN BY:

CC

DATE:

05.28.2015

SYSTEM

DEKTON CONCEALED UNDERCUT ANCHOR SYSTEM

SCALE:

1/2" = 1"

DETAIL #:

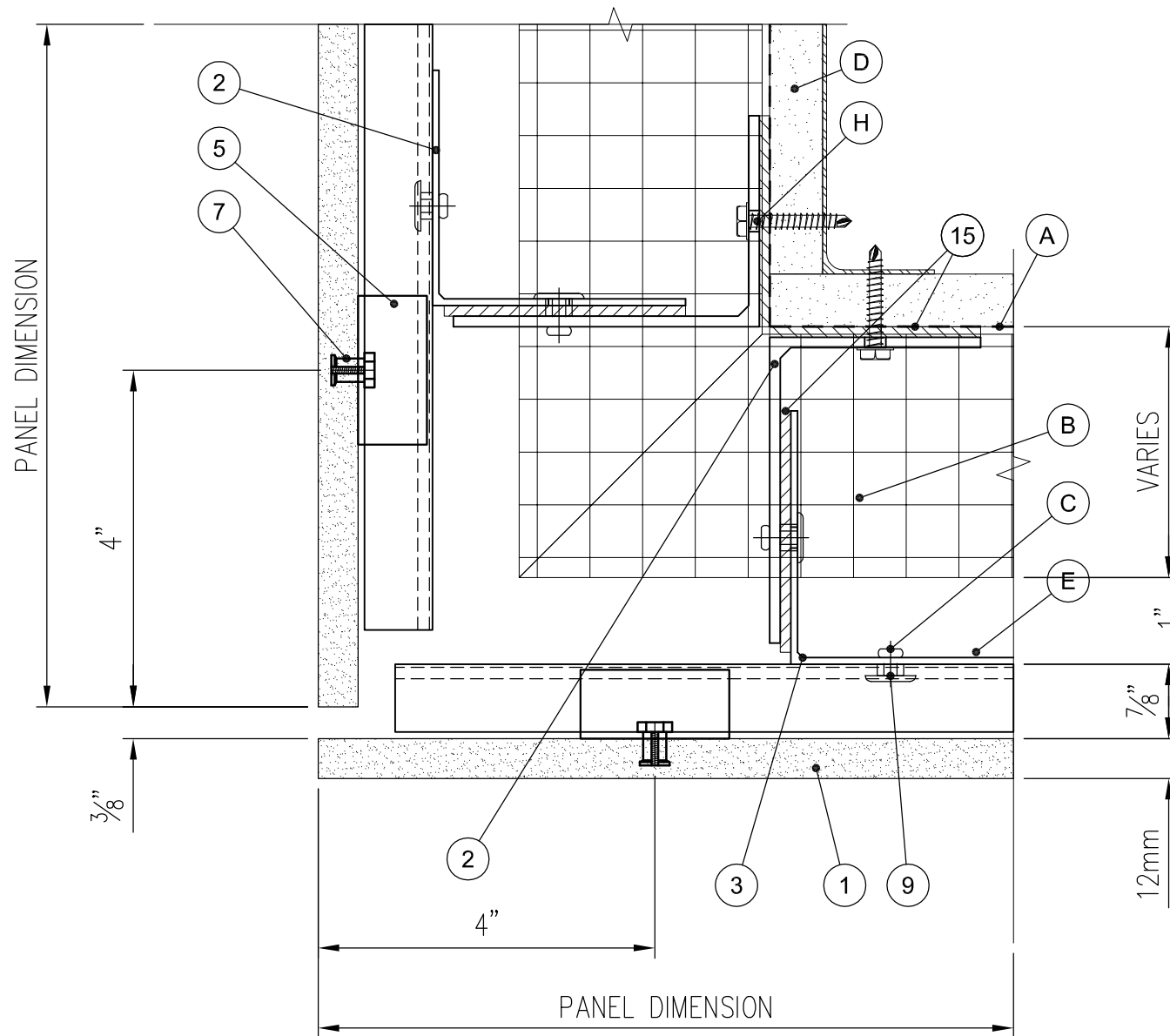
5a

APPROVED BY:

SG

SHEET:

7 OF 17



No.	DESCRIPTION
1	DEKTON PANEL (12MM) *
2	L-BRACKET
3	L-PROFILE (CONT.)
4	ADJUSTABLE BRACKET
5	FIXED BRACKET
6	RIVET FASTENER
7	KEIL ANCHOR (7mm) *
8	RAIL ANCHOR
9	RAIL
10	SYSTEM CLOSURE
11	VENT SCREEN
12	CLIP ANCHOR
13	CORNER CLOSURE
14	JOINT CLOSURE
15	THERMAL ISOLATOR

A	WRB
B	MINERAL WOOL
C	RIVET
D	SHEATHING
E	Z-GIRT
F	SYSTEM CLOSURE
G	VENT SCREEN
H	PERIMETER ANCHOR
J	EPOXY

Notes:

Items shown represent assemblies tested by Cosentino or testing submitted by third-parties using Cosentino products.

Facade testing includes a combination of test methods. A minimum of ASTM E330 testing and ASTM C1354 was performed on assemblies represented on our website as mechanically attached facade solutions. Please contact your local representative to learn more.

Local jurisdictions may have specific requirements not represented in these details. Please contact your local code official to determine the requirements for your specific project. Cosentino has a host of tools and data to address specific project requirements once they are known.

Fastener (H) to be project specific and determined by project engineer. Considerations include wall type and project specific engineering needs.

Keil Anchor (7) tested with 7 mm Anchors and bolt to fit anchor and thickness of aluminum.



TITLE:

6 OUTSIDE CORNER

DRAWN BY:

CC

DATE:

05.28.2015

SYSTEM

DEKTON CONCEALED UNDERCUT ANCHOR SYSTEM

SCALE:

1/2" = 1"

DETAIL #:

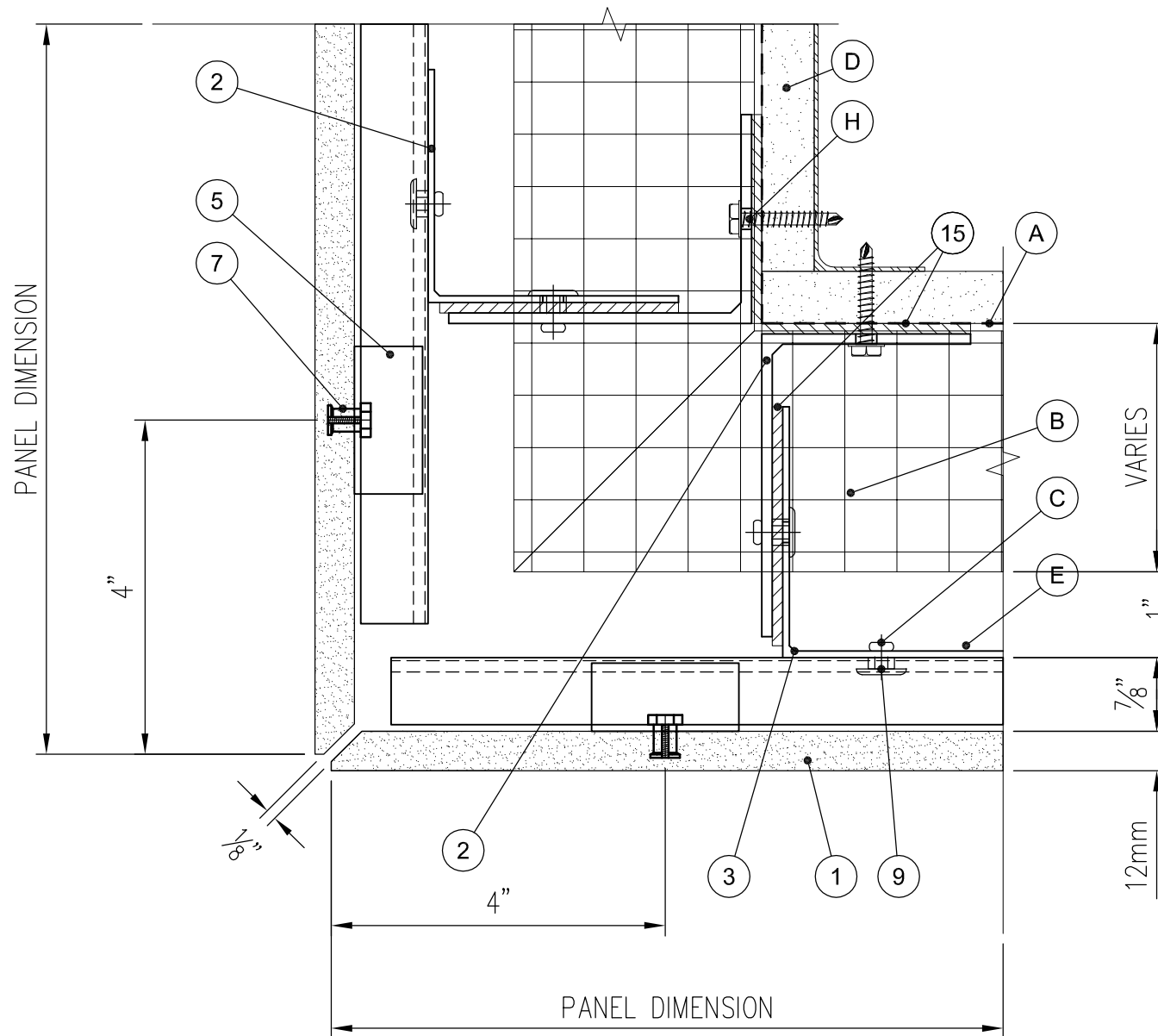
6

APPROVED BY:

SG

SHEET:

8 OF 17



No.	DESCRIPTION
1	DEKTON PANEL (12MM) *
2	L-BRACKET
3	L-PROFILE (CONT.)
4	ADJUSTABLE BRACKET
5	FIXED BRACKET
6	RIVET FASTENER
7	KEIL ANCHOR (7mm) *
8	RAIL ANCHOR
9	RAIL
10	SYSTEM CLOSURE
11	VENT SCREEN
12	CLIP ANCHOR
13	CORNER CLOSURE
14	JOINT CLOSURE
15	THERMAL ISOLATOR

A	WRB
B	MINERAL WOOL
C	RIVET
D	SHEATHING
E	Z-GIRT
F	SYSTEM CLOSURE
G	VENT SCREEN
H	PERIMETER ANCHOR
J	EPOXY

Notes:

Items shown represent assemblies tested by Cosentino or testing submitted by third-parties using Cosentino products.

Facade testing includes a combination of test methods. A minimum of ASTM E330 testing and ASTM C1354 was performed on assemblies represented on our website as mechanically attached facade solutions. Please contact your local representative to learn more.

Local jurisdictions may have specific requirements not represented in these details. Please contact your local code official to determine the requirements for your specific project. Cosentino has a host of tools and data to address specific project requirements once they are known.

Fastener (H) to be project specific and determined by project engineer. Considerations include wall type and project specific engineering needs.

Keil Anchor (7) tested with 7 mm Anchors and bolt to fit anchor and thickness of aluminum.



TITLE:

6a OUTSIDE MITERED CORNER

DRAWN BY:

CC

DATE:

05.28.2015

SYSTEM

DEKTON CONCEALED UNDERCUT ANCHOR SYSTEM

SCALE:

1/2" = 1"

DETAIL #:

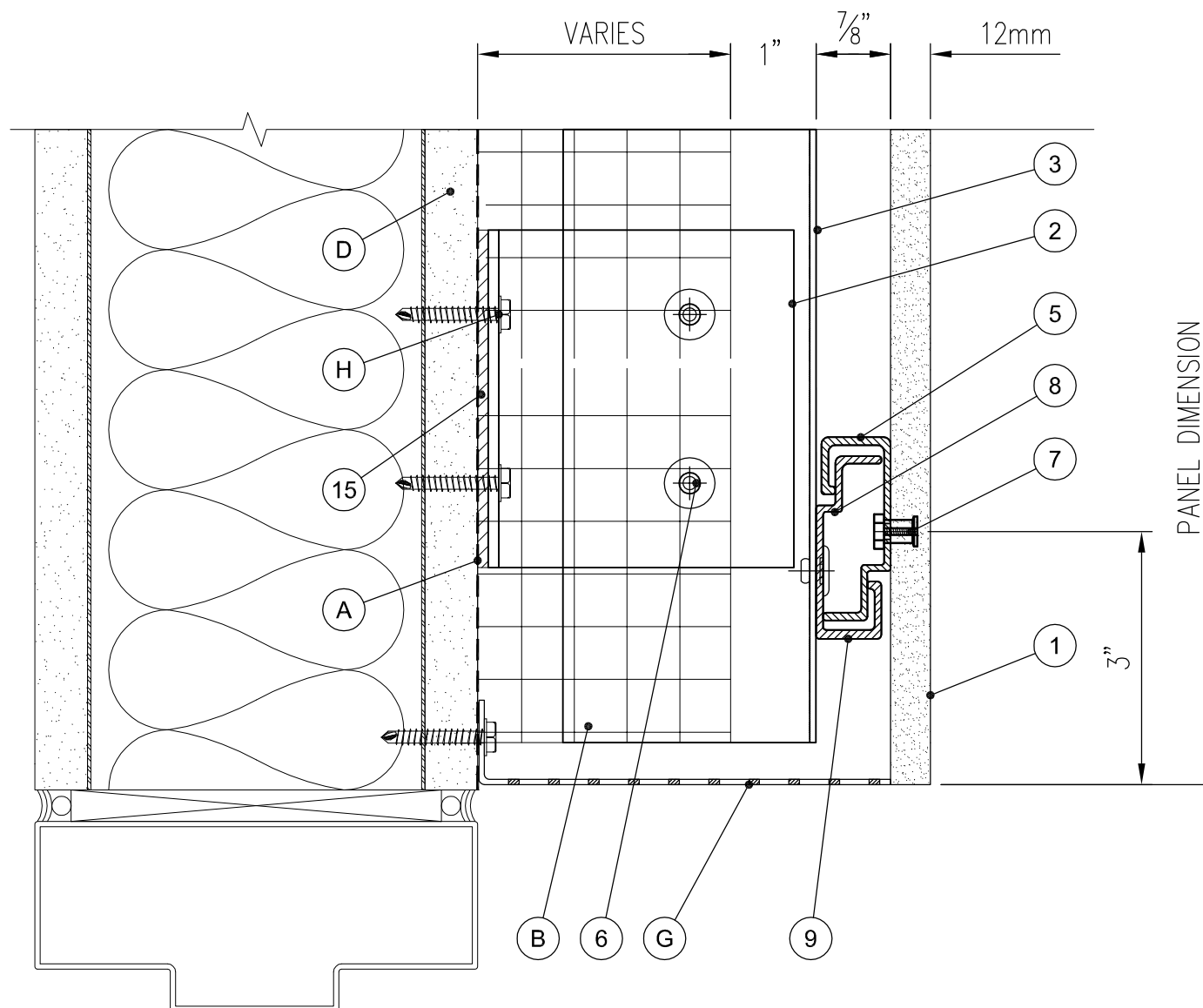
6a

APPROVED BY:

SG

SHEET:

9 OF 17



No.	DESCRIPTION
1	DEKTON PANEL (12MM) *
2	L-BRACKET
3	L-PROFILE (CONT.)
4	ADJUSTABLE BRACKET
5	FIXED BRACKET
6	RIVET FASTENER
7	KEIL ANCHOR (7mm) *
8	RAIL ANCHOR
9	RAIL
10	SYSTEM CLOSURE
11	VENT SCREEN
12	CLIP ANCHOR
13	CORNER CLOSURE
14	JOINT CLOSURE
15	THERMAL ISOLATOR

A	WRB
B	MINERAL WOOL
C	RIVET
D	SHEATHING
E	Z-GIRT
F	SYSTEM CLOSURE
G	VENT SCREEN
H	PERIMETER ANCHOR
J	EPOXY

Notes:

Items shown represent assemblies tested by Cosentino or testing submitted by third-parties using Cosentino products.

Facade testing includes a combination of test methods. A minimum of ASTM E330 testing and ASTM C1354 was performed on assemblies represented on our website as mechanically attached facade solutions. Please contact your local representative to learn more.

Local jurisdictions may have specific requirements not represented in these details. Please contact your local code official to determine the requirements for your specific project. Cosentino has a host of tools and data to address specific project requirements once they are known.

Fastener (H) to be project specific and determined by project engineer. Considerations include wall type and project specific engineering needs.

Keil Anchor (7) tested with 7 mm Anchors and bolt to fit anchor and thickness of aluminum.



TITLE:

7 DOOR HEAD

DRAWN BY:

CC

DATE:

05.28.2015

SYSTEM

DEKTON CONCEALED UNDERCUT ANCHOR SYSTEM

SCALE:

1/2" = 1"

DETAIL #:

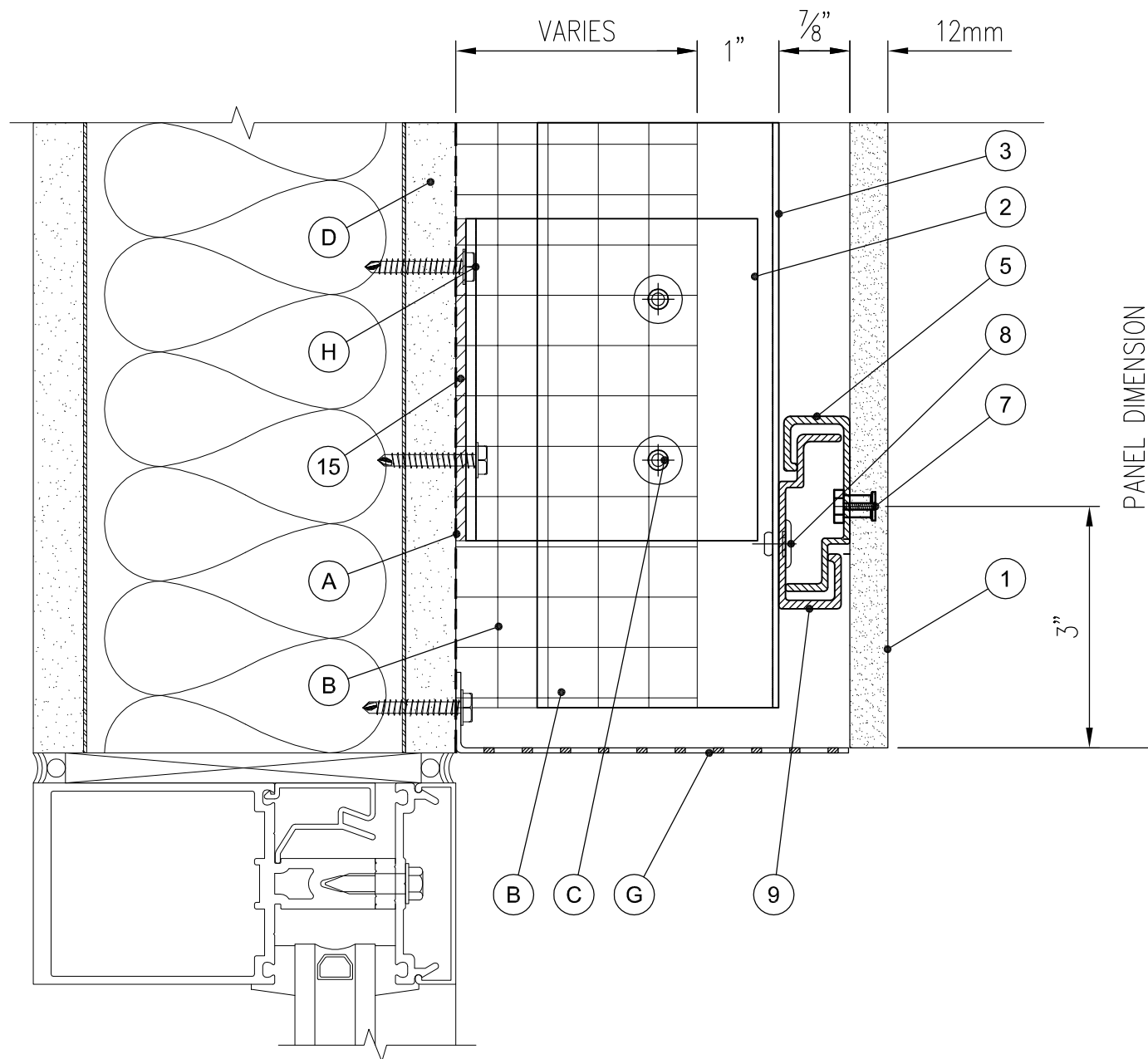
7

APPROVED BY:

SG

SHEET:

10 OF 17



No.	DESCRIPTION
1	DEKTON PANEL (12MM) *
2	L-BRACKET
3	L-PROFILE (CONT.)
4	ADJUSTABLE BRACKET
5	FIXED BRACKET
6	RIVET FASTENER
7	KEIL ANCHOR (7mm) *
8	RAIL ANCHOR
9	RAIL
10	SYSTEM CLOSURE
11	VENT SCREEN
12	CLIP ANCHOR
13	CORNER CLOSURE
14	JOINT CLOSURE
15	THERMAL ISOLATOR

A	WRB
B	MINERAL WOOL
C	RIVET
D	SHEATHING
E	Z-GIRT
F	SYSTEM CLOSURE
G	VENT SCREEN
H	PERIMETER ANCHOR
J	EPOXY

Notes:

Items shown represent assemblies tested by Cosentino or testing submitted by third-parties using Cosentino products.

Facade testing includes a combination of test methods. A minimum of ASTM E330 testing and ASTM C1354 was performed on assemblies represented on our website as mechanically attached facade solutions. Please contact your local representative to learn more.

Local jurisdictions may have specific requirements not represented in these details. Please contact your local code official to determine the requirements for your specific project. Cosentino has a host of tools and data to address specific project requirements once they are known.

Fastener (H) to be project specific and determined by project engineer. Considerations include wall type and project specific engineering needs.

Keil Anchor (7) tested with 7 mm Anchors and bolt to fit anchor and thickness of aluminum.



TITLE:

8 WINDOW HEAD

DRAWN BY:

CC

DATE:

05.28.2015

SYSTEM

DEKTON CONCEALED UNDERCUT ANCHOR SYSTEM

SCALE:

1/2" = 1"

DETAIL #:

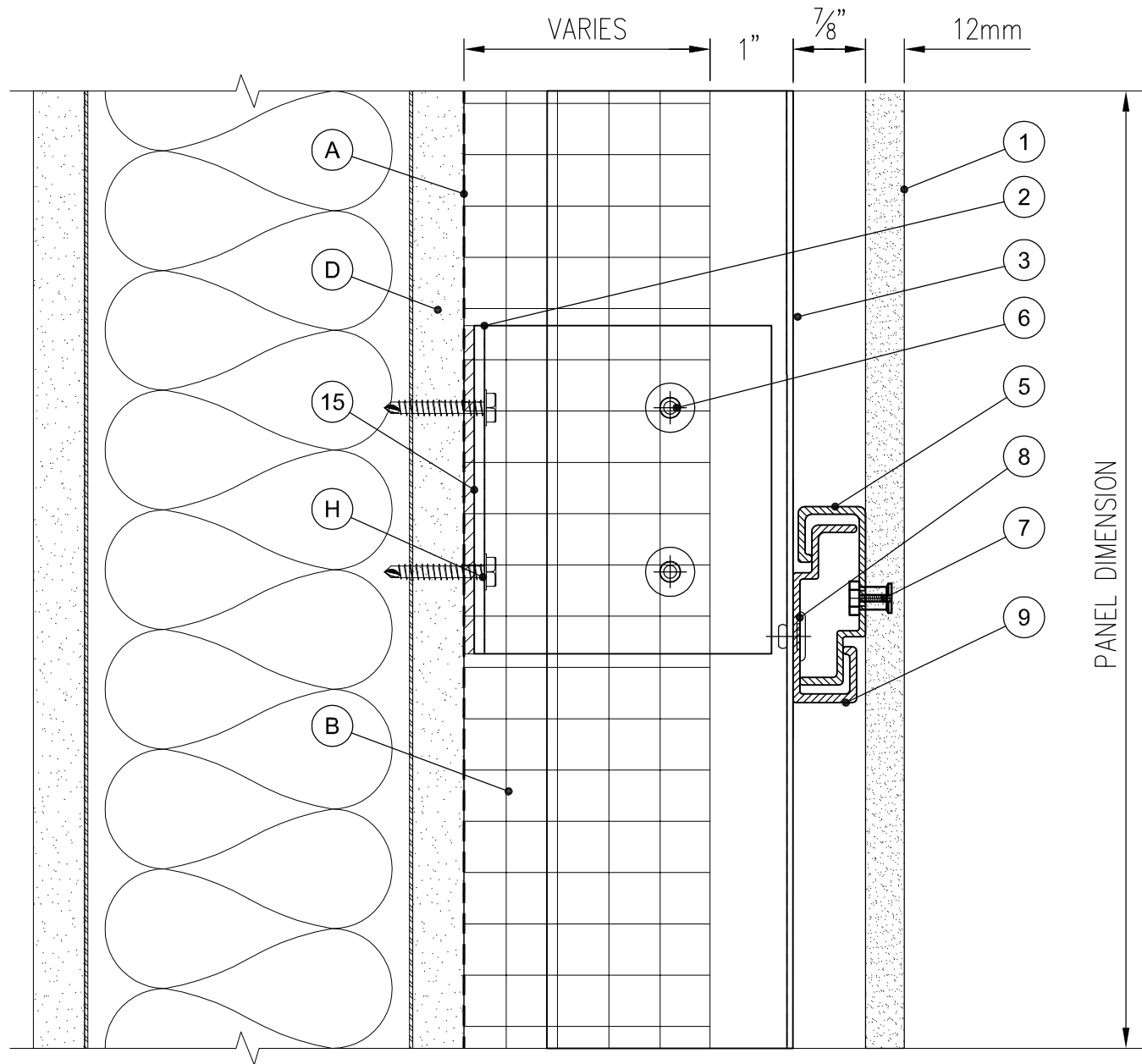
8

APPROVED BY:

SG

SHEET:

11 OF 17



No.	DESCRIPTION
1	DEKTON PANEL (12MM) *
2	L-BRACKET
3	L-PROFILE (CONT.)
4	ADJUSTABLE BRACKET
5	FIXED BRACKET
6	RIVET FASTENER
7	KEIL ANCHOR (7mm) *
8	RAIL ANCHOR
9	RAIL
10	SYSTEM CLOSURE
11	VENT SCREEN
12	CLIP ANCHOR
13	CORNER CLOSURE
14	JOINT CLOSURE
15	THERMAL ISOLATOR

A	WRB
B	MINERAL WOOL
C	RIVET
D	SHEATHING
E	Z-GIRT
F	SYSTEM CLOSURE
G	VENT SCREEN
H	PERIMETER ANCHOR
J	EPOXY

Notes:

Items shown represent assemblies tested by Cosentino or testing submitted by third-parties using Cosentino products.

Facade testing includes a combination of test methods. A minimum of ASTM E330 testing and ASTM C1354 was performed on assemblies represented on our website as mechanically attached facade solutions. Please contact your local representative to learn more.

Local jurisdictions may have specific requirements not represented in these details. Please contact your local code official to determine the requirements for your specific project. Cosentino has a host of tools and data to address specific project requirements once they are known.

Fastener (H) to be project specific and determined by project engineer. Considerations include wall type and project specific engineering needs.

Keil Anchor (7) tested with 7 mm Anchors and bolt to fit anchor and thickness of aluminum.



TITLE:

9 HORIZONTAL MID PANEL

DRAWN BY:

CC

DATE:

05.28.2015

SYSTEM

DEKTON CONCEALED UNDERCUT ANCHOR SYSTEM

SCALE:

1/2" = 1"

DETAIL #:

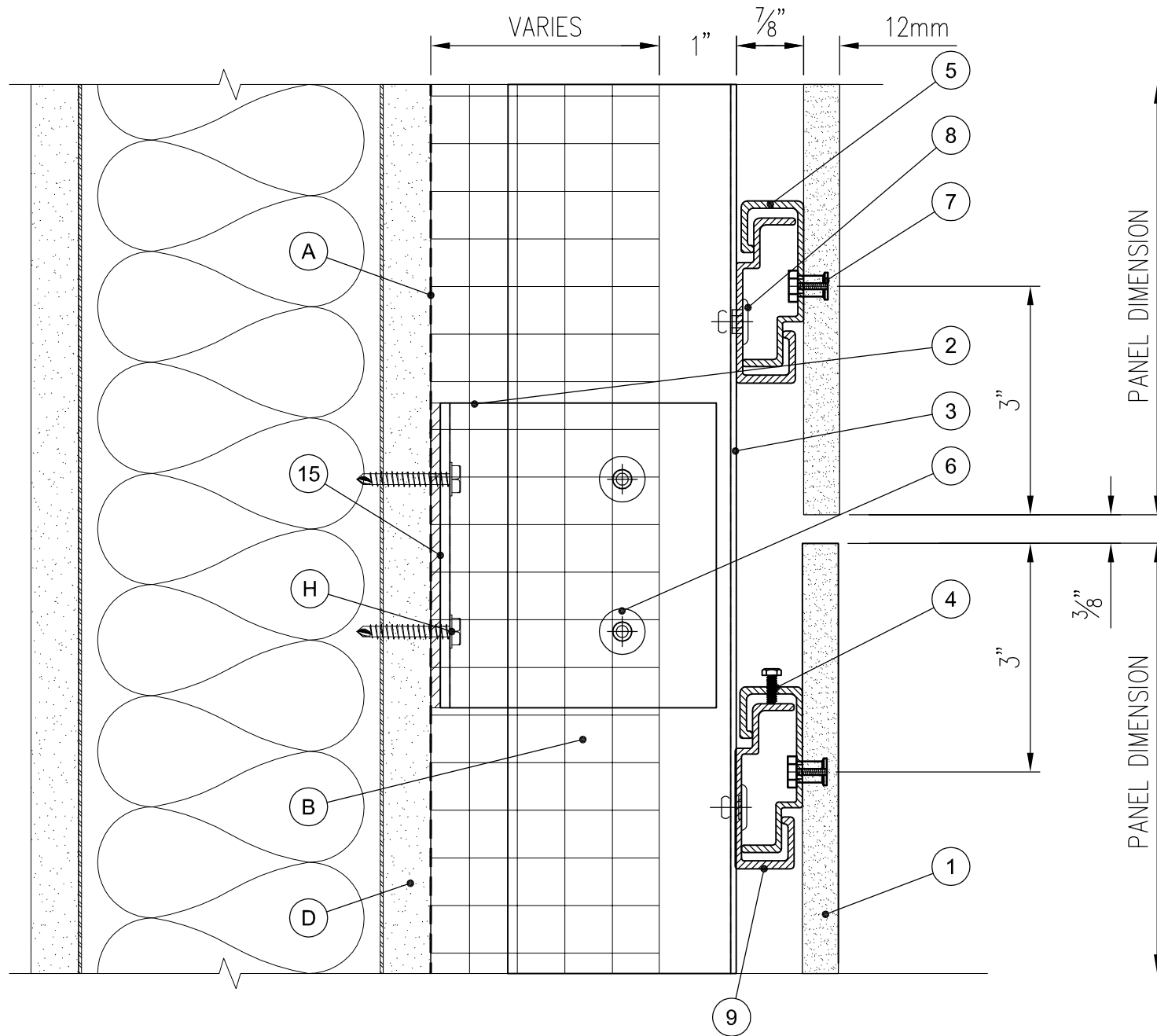
9

APPROVED BY:

SG

SHEET:

12 OF 17



No.	DESCRIPTION
1	DEKTON PANEL (12MM) *
2	L-BRACKET
3	L-PROFILE (CONT.)
4	ADJUSTABLE BRACKET
5	FIXED BRACKET
6	RIVET FASTENER
7	KEIL ANCHOR (7mm) *
8	RAIL ANCHOR
9	RAIL
10	SYSTEM CLOSURE
11	VENT SCREEN
12	CLIP ANCHOR
13	CORNER CLOSURE
14	JOINT CLOSURE
15	THERMAL ISOLATOR

A	WRB
B	MINERAL WOOL
C	RIVET
D	SHEATHING
E	Z-GIRT
F	SYSTEM CLOSURE
G	VENT SCREEN
H	PERIMETER ANCHOR
J	EPOXY

Notes:

Items shown represent assemblies tested by Cosentino or testing submitted by third-parties using Cosentino products.

Facade testing includes a combination of test methods. A minimum of ASTM E330 testing and ASTM C1354 was performed on assemblies represented on our website as mechanically attached facade solutions. Please contact your local representative to learn more.

Local jurisdictions may have specific requirements not represented in these details. Please contact your local code official to determine the requirements for your specific project. Cosentino has a host of tools and data to address specific project requirements once they are known.

Fastener (H) to be project specific and determined by project engineer. Considerations include wall type and project specific engineering needs.

Keil Anchor (7) tested with 7 mm Anchors and bolt to fit anchor and thickness of aluminum.



TITLE:

10 HORIZONTAL PANEL JOINT

DRAWN BY:

CC

DATE:

05.28.2015

SYSTEM

DEKTON CONCEALED UNDERCUT ANCHOR SYSTEM

SCALE:

1/2" = 1"

DETAIL #:

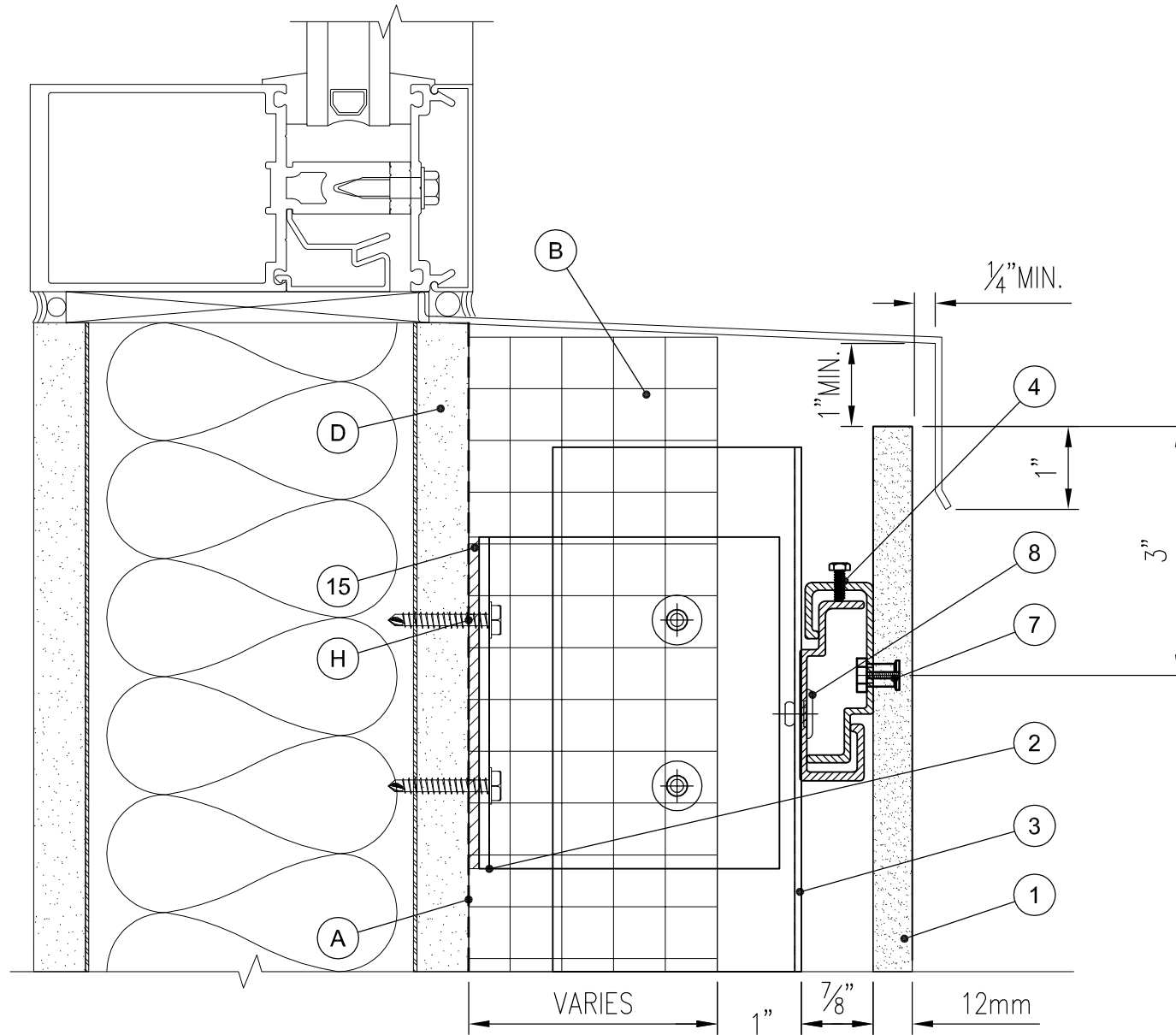
10

APPROVED BY:

SG

SHEET:

13 OF 17



No.	DESCRIPTION
1	DEKTON PANEL (12MM) *
2	L-BRACKET
3	L-PROFILE (CONT.)
4	ADJUSTABLE BRACKET
5	FIXED BRACKET
6	RIVET FASTENER
7	KEIL ANCHOR (7mm) *
8	RAIL ANCHOR
9	RAIL
10	SYSTEM CLOSURE
11	VENT SCREEN
12	CLIP ANCHOR
13	CORNER CLOSURE
14	JOINT CLOSURE
15	THERMAL ISOLATOR

A	WRB
B	MINERAL WOOL
C	RIVET
D	SHEATHING
E	Z-GIRT
F	SYSTEM CLOSURE
G	VENT SCREEN
H	PERIMETER ANCHOR
J	EPOXY

Notes:

Items shown represent assemblies tested by Cosentino or testing submitted by third-parties using Cosentino products.

Facade testing includes a combination of test methods. A minimum of ASTM E330 testing and ASTM C1354 was performed on assemblies represented on our website as mechanically attached facade solutions. Please contact your local representative to learn more.

Local jurisdictions may have specific requirements not represented in these details. Please contact your local code official to determine the requirements for your specific project. Cosentino has a host of tools and data to address specific project requirements once they are known.

Fastener (H) to be project specific and determined by project engineer. Considerations include wall type and project specific engineering needs.

Keil Anchor (7) tested with 7 mm Anchors and bolt to fit anchor and thickness of aluminum.



TITLE:

11 WINDOW SILL

DRAWN BY:

CC

DATE:

05.28.2015

SYSTEM

DEKTON CONCEALED UNDERCUT ANCHOR SYSTEM

SCALE:

1/2" = 1"

DETAIL #:

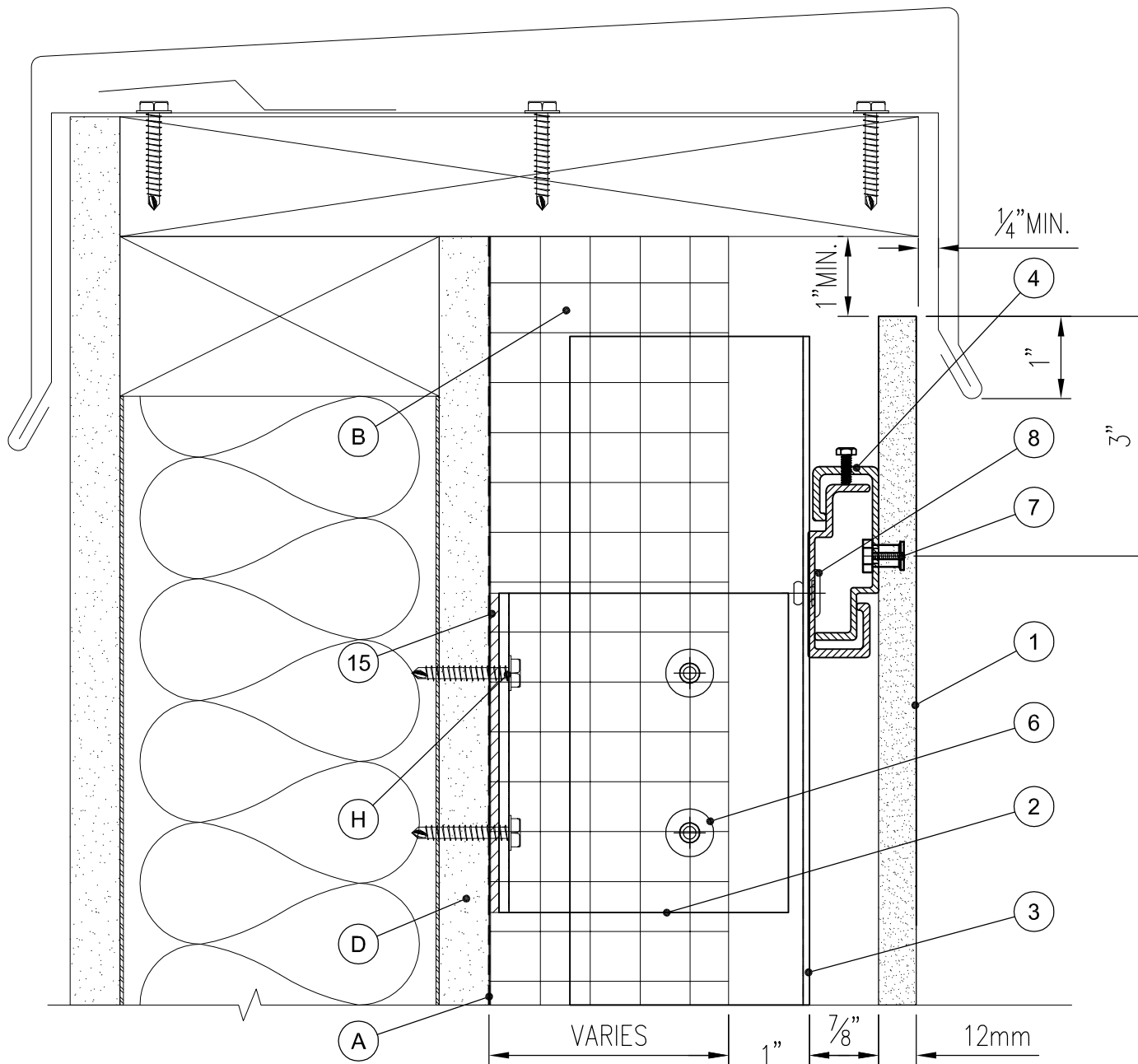
11

APPROVED BY:

SG

SHEET:

14 OF 17



No.	DESCRIPTION
1	DEKTON PANEL (12MM) *
2	L-BRACKET
3	L-PROFILE (CONT.)
4	ADJUSTABLE BRACKET
5	FIXED BRACKET
6	RIVET FASTENER
7	KEIL ANCHOR (7mm) *
8	RAIL ANCHOR
9	RAIL
10	SYSTEM CLOSURE
11	VENT SCREEN
12	CLIP ANCHOR
13	CORNER CLOSURE
14	JOINT CLOSURE
15	THERMAL ISOLATOR

A	WRB
B	MINERAL WOOL
C	RIVET
D	SHEATHING
E	Z-GIRT
F	SYSTEM CLOSURE
G	VENT SCREEN
H	PERIMETER ANCHOR
J	EPOXY

Notes:

Items shown represent assemblies tested by Cosentino or testing submitted by third-parties using Cosentino products.

Facade testing includes a combination of test methods. A minimum of ASTM E330 testing and ASTM C1354 was performed on assemblies represented on our website as mechanically attached facade solutions. Please contact your local representative to learn more.

Local jurisdictions may have specific requirements not represented in these details. Please contact your local code official to determine the requirements for your specific project. Cosentino has a host of tools and data to address specific project requirements once they are known.

Fastener (H) to be project specific and determined by project engineer. Considerations include wall type and project specific engineering needs.

Keil Anchor (7) tested with 7 mm Anchors and bolt to fit anchor and thickness of aluminum.



TITLE:

12 PARAPET CAP

DRAWN BY:

CC

DATE:

05.28.2015

SYSTEM

DEKTON CONCEALED UNDERCUT ANCHOR SYSTEM

SCALE:

1/2" = 1"

DETAIL #:

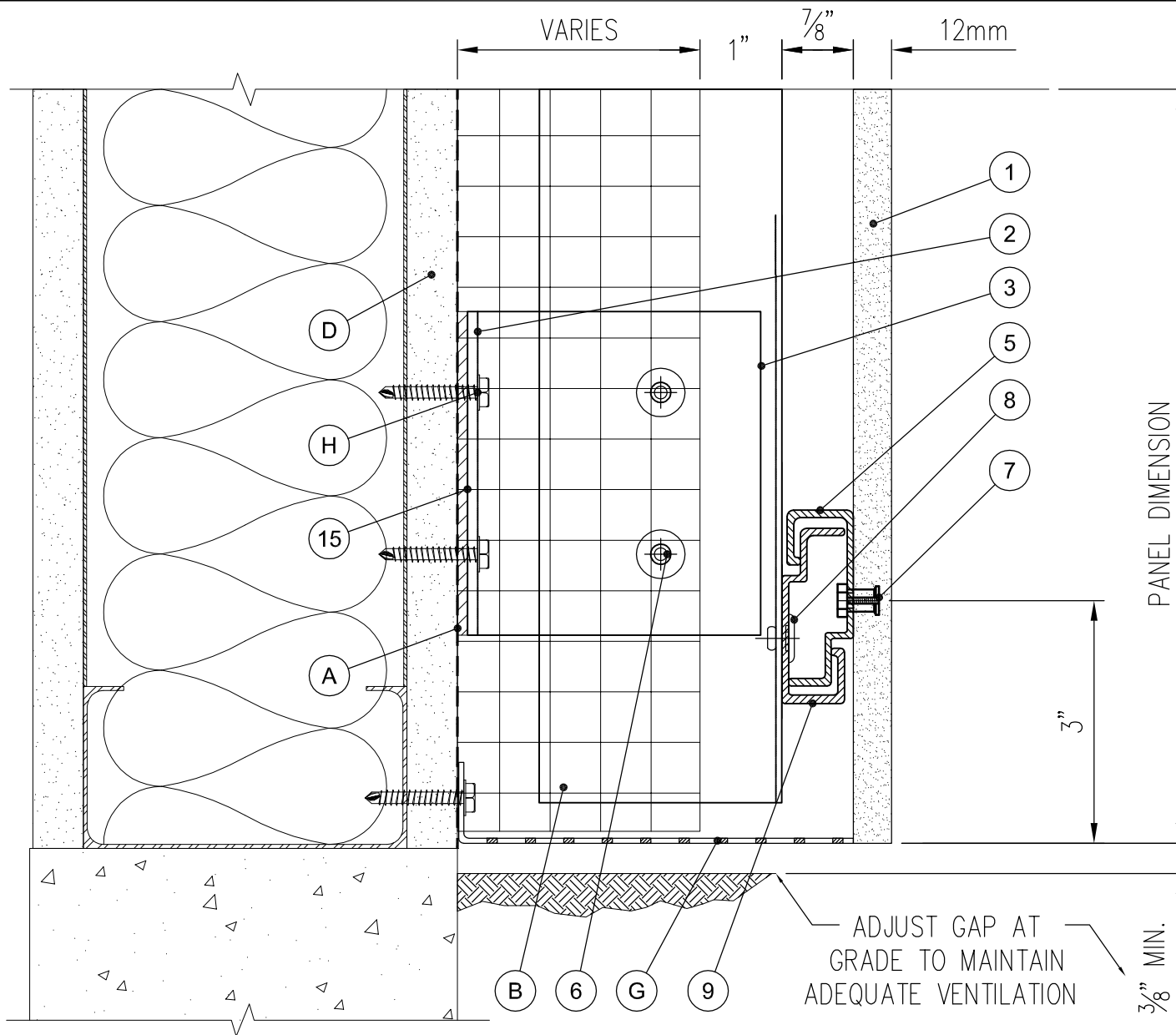
12

APPROVED BY:

SG

SHEET:

15 OF 17



No.	DESCRIPTION
1	DEKTON PANEL (12MM) *
2	L-BRACKET
3	L-PROFILE (CONT.)
4	ADJUSTABLE BRACKET
5	FIXED BRACKET
6	RIVET FASTENER
7	KEIL ANCHOR (7mm) *
8	RAIL ANCHOR
9	RAIL
10	SYSTEM CLOSURE
11	VENT SCREEN
12	CLIP ANCHOR
13	CORNER CLOSURE
14	JOINT CLOSURE
15	THERMAL ISOLATOR

A	WRB
B	MINERAL WOOL
C	RIVET
D	SHEATHING
E	Z-GIRT
F	SYSTEM CLOSURE
G	VENT SCREEN
H	PERIMETER ANCHOR
J	EPOXY

Notes:

Items shown represent assemblies tested by Cosentino or testing submitted by third-parties using Cosentino products.

Facade testing includes a combination of test methods. A minimum of ASTM E330 testing and ASTM C1354 was performed on assemblies represented on our website as mechanically attached facade solutions. Please contact your local representative to learn more.

Local jurisdictions may have specific requirements not represented in these details. Please contact your local code official to determine the requirements for your specific project. Cosentino has a host of tools and data to address specific project requirements once they are known.

Fastener (H) to be project specific and determined by project engineer. Considerations include wall type and project specific engineering needs.

Keil Anchor (7) tested with 7 mm Anchors and bolt to fit anchor and thickness of aluminum.



TITLE:

13 BASE FLOOR PANEL

DRAWN BY:

CC

DATE:

05.28.2015

SYSTEM

DEKTON CONCEALED UNDERCUT ANCHOR SYSTEM

SCALE:

1/2" = 1"

DETAIL #:

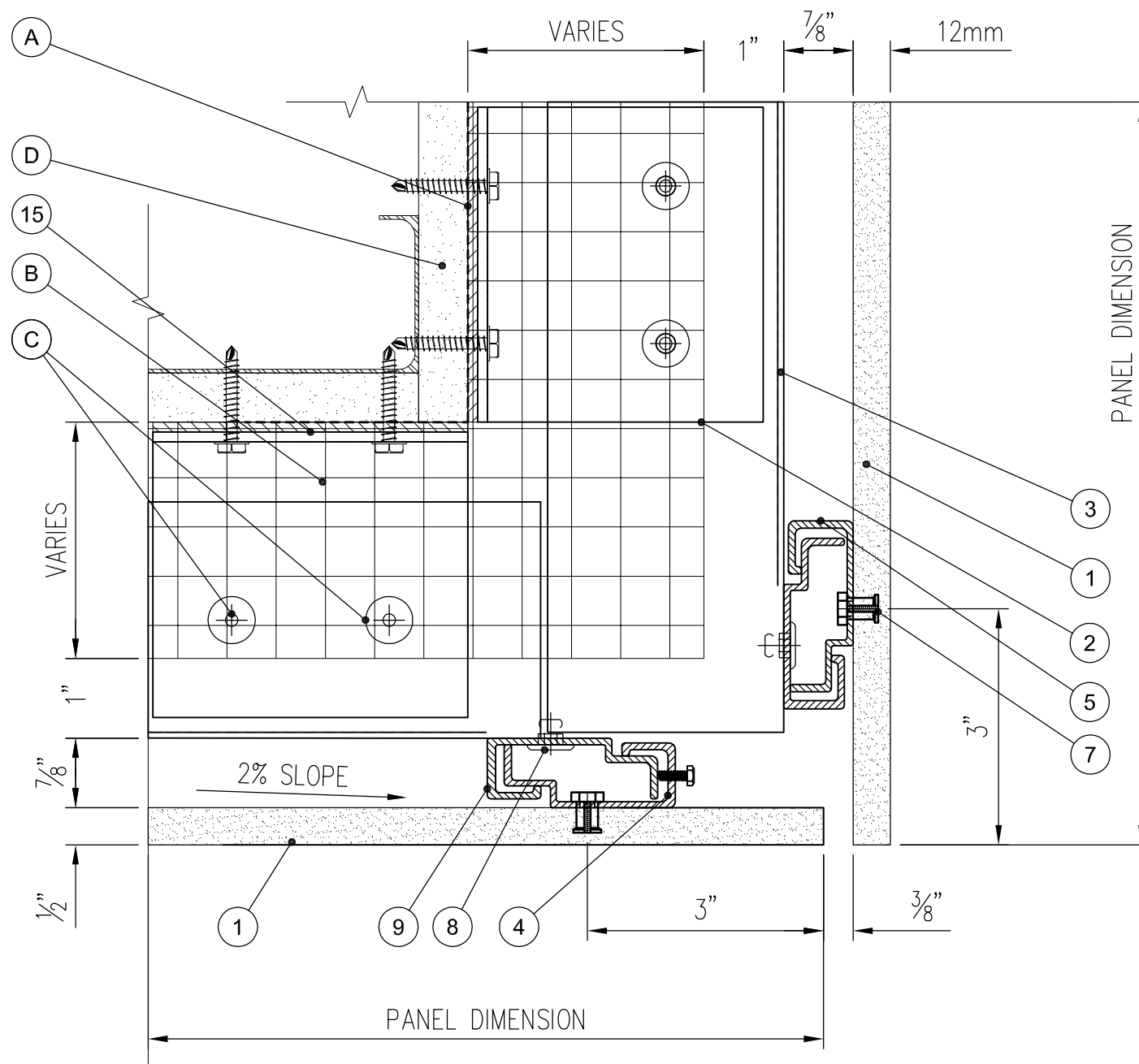
13

APPROVED BY:

SG

SHEET:

16 OF 17



No.	DESCRIPTION
1	DEKTON PANEL (12MM) *
2	L-BRACKET
3	L-PROFILE (CONT.)
4	ADJUSTABLE BRACKET
5	FIXED BRACKET
6	RIVET FASTENER
7	KEIL ANCHOR (7mm) *
8	RAIL ANCHOR
9	RAIL
10	SYSTEM CLOSURE
11	VENT SCREEN
12	CLIP ANCHOR
13	CORNER CLOSURE
14	JOINT CLOSURE
15	THERMAL ISOLATOR

A	WRB
B	MINERAL WOOL
C	RIVET
D	SHEATHING
E	Z-GIRT
F	SYSTEM CLOSURE
G	VENT SCREEN
H	PERIMETER ANCHOR
J	EPOXY

Notes:

Items shown represent assemblies tested by Cosentino or testing submitted by third-parties using Cosentino products.

Facade testing includes a combination of test methods. A minimum of ASTM E330 testing and ASTM C1354 was performed on assemblies represented on our website as mechanically attached facade solutions. Please contact your local representative to learn more.

Local jurisdictions may have specific requirements not represented in these details. Please contact your local code official to determine the requirements for your specific project. Cosentino has a host of tools and data to address specific project requirements once they are known.

Fastener (H) to be project specific and determined by project engineer. Considerations include wall type and project specific engineering needs.

Keil Anchor (7) tested with 7 mm Anchors and bolt to fit anchor and thickness of aluminum.



TITLE:

14 SOFFIT DETAIL

DRAWN BY:

CC

DATE:

05.28.2015

SYSTEM

DEKTON CONCEALED UNDERCUT ANCHOR SYSTEM

SCALE:

1/2" = 1"

DETAIL #:

15

APPROVED BY:

SG

SHEET:

17 OF 17