

C·Bath

A new bathroom experience
by Cosentino®

The Bathelier

The Bathelier is Cosentino®'s proposal that embodies the vision of a unique, experience-oriented space through renowned designers who interpret the bathroom of the future: unusual, unique and seamless.

CLAUDIA AFSHAR, REMY MEIJERS, DANIEL GERMANI,
COLIN SEAH AND MUT DESIGN

COSENTINO®

Get inspired at [cosentino.com](https://www.cosentino.com)





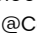
C·Bath

A new bathroom experience
by Cosentino®

The Bathelier by Claudia Afshar, Remy Meijers,
Daniel Germani, Colin Seah and MUT Design.

©2023 Cosentino®

NORTH AMERICA HEADQUARTERS
355 Alhambra Circle Suite 1000,
Coral Gables, FL 33134 , United States of America
786.686.5060

   @CosentinoUSA

www.cosentino.com

The Bathelier

The Bathelier is Cosentino®'s proposal that embodies the vision of a unique, experience-oriented space through renowned designers who interpret the bathroom of the future: unusual, unique and seamless.

CLAUDIA AFSHAR, REMY MEIJERS, DANIEL GERMANI,
COLIN SEAH AND MUT DESIGN

COSENTINO

C·Bath

A NEW BATHROOM EXPERIENCE BY COSENTINO®

C-Bath is Cosentino®'s comprehensive approach to reimagining the bath space through design and technology.

A 360° vision of the space from a new perspective. Innovation in the design of unique and personalized environments, featuring large format wall and floor cladding with minimal jointing, colors and textures in perfect balance, minimalist sinks and shower trays designed with great attention to detail. Manufactured with state-of-the-art materials such as Silestone®, Dekton® and Sensa, C-Bath gives a fresh look to your bathroom.

C-Bath is the experience of designing a bathroom to suit you, a personal space in which to find serenity and well-being: a bathroom to be lived in.

Bathrooms where creativity is at its best with The Bathelier: exclusive collections created by designers from all over the world.

A creative look at the bathroom space where art and functionality converge.



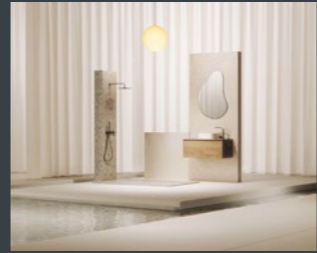
Index

Cosentino® P. 10



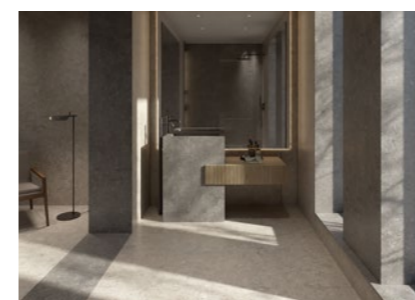
To inspire people through innovative and sustainable spaces

The Bathelier P. 16



Claudia Afshar 20
Remy Meijers 34
Daniel Germani 48
Colin Seah 62
MUT Design 76

C-Bath Studio P. 90



Projects P. 124



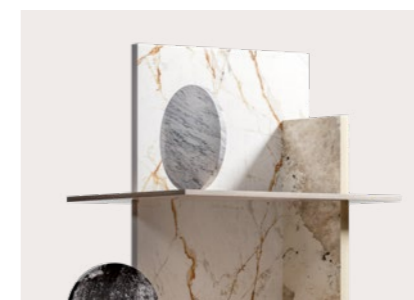
Comprehensive bathroom concept P. 152



C-Bath Quickship  P. 156



Materials P. 162



Color Range P. 178



Flooring & Cladding P. 190



Sinks & Shower trays P. 198



Accessories P. 244



We seek to generate valuable, **meaningful, and comprehensive** benefits.

Enriched and balanced **with the positive impact of everything we do.** Good for people's lives, the development of their communities **and the planet we live on.**

A growth that harmonizes **the benefits of today with those of the future.** Growing responsibly with regard for **the consequences of our actions.**

Benefits to keep growing, but in an ever better world.

Photovoltaic plant at Cosentino Industrial Park

Cosentino®



To inspire people through innovative and sustainable spaces

Cosentino® Sustainability

At Cosentino® we approach sustainability as a collective commitment that stems from the individual involvement of those that are part of the organization.

Our continuous improvement efforts involve a constant analysis of our entire value chain – from the procurement of raw materials to the delivery of end products to customer.

At Cosentino® we are strongly committed to the 2030 Agenda promoted by the United Nations. The company, in light of its position as a global leader in the production and distribution of innovative surfaces for architecture and design from its headquarters in Almeria, Spain, is committed to driving local and global sustainability efforts.

Water

Since our inception, we have appreciated the importance and understood the challenges of proper water management.

This has motivated us to implement a sustainable use policy maximizing the efficient use of water resources in the different production processes.

We use cutting-edge technology to achieve 99% recycled water in all our production processes in Cosentino®'s industrial park.

Additionally, we use 100% of surplus water to irrigate green areas.

Materials

We are aware of the importance of making the most of the materials we work with, both from the beginning of their life cycle to the end of the value chain.

With this goal in mind, in recent years we have embarked on an ambitious R&D project called "Circularity" to reuse the materials from which we manufacture our products.

Another action is the disruptive HybriQ+ technology that brings about the new generation of Silestone®. HybriQ+ contains a minimum of 20% recycled materials and is manufactured using only renewable energy and 99% recycled water.

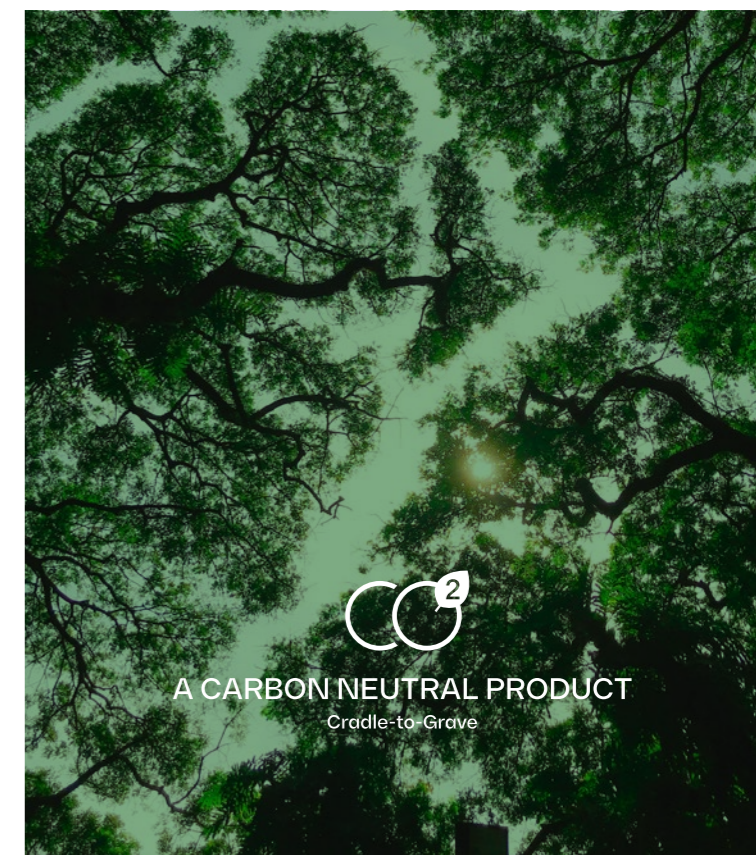
Cosentino® CO₂ Neutral

We offset our CO₂ emissions for the entire life cycle of the product.

The ultra-compact Dekton® stone is classified as Carbon Neutral.

We have identified those projects that meet the requirements for responsible offsetting and that, in turn, have a strong social dimension that contribute to the achievement of the Sustainable Development Goals of the UN's 2030 Agenda.

The project chosen in 2019 for the offsetting of CO₂ emissions has an important direct impact on sustainable development by supporting the local economy, providing training and job opportunities.



Waste treatment and recovery plant (CoMA)



99% recycled water in all our production processes



Care for the Planet. Restoration of natural spaces in Cantoria, Almería.



The Bathelier



The Bathelier

by Cosentino®

A unique vision of creative bathrooms.

The Bathelier is Cosentino®'s proposal that embodies the vision of a unique, experience-oriented space through renowned designers who interpret the bathroom of the future: unusual, unique and seamless. Iconic spaces with a focus on materials that elevate and redefine the bathroom.

An exclusive portfolio of bathroom solutions, with unique shapes, evocative textures and geometric patterns that fit seamlessly, uniformly and sculpturally. A canvas of color that transforms the bathroom.

The Bathelier is the result of a creative process that pushes the boundaries of design, generating unique environments that inspire us. Environments that move us.

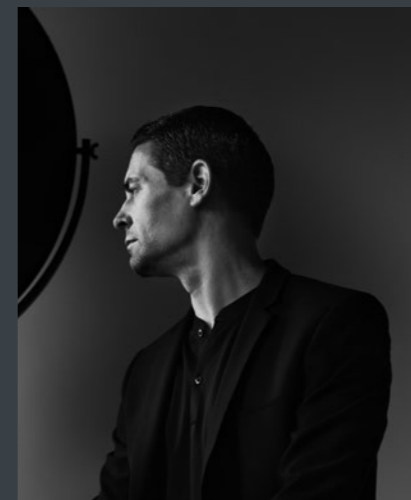
CLAUDIA
AFSHAR

P. 20



REMY
MEIJERS

P. 34



DANIEL
GERMANI

P. 48



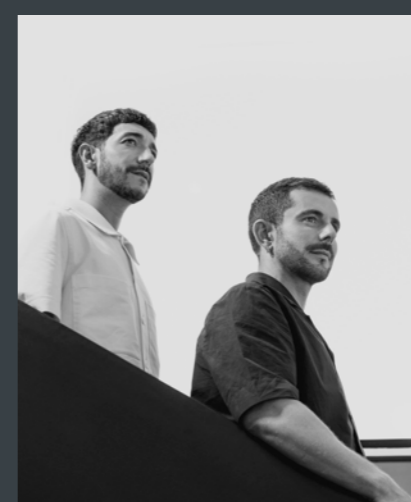
COLIN
SEAH

P. 62



MUT
DESIGN

P. 76



CLAUDIA AFSHAR

X
The Bathelier



“Well-being has never been as important in the bathroom as it is today, with functionality and aesthetics playing a key role.”

Based in Los Angeles, Claudia Afshar and her studio, Claudia Afshar Design, have become an international benchmark in the field of interior design. Celebrities and developers worldwide rely on the designer to bring their most emblematic projects to life.

In them she blends stylistic references to the US with hints of the UK and London, her home town, where she began working while learning architectural design at Living Space, her mother's award-winning interior design firm. Her projects, marked by an elegant and contemporary décor, are regularly featured in magazines such as Vogue, Elle Décor and Rue Magazine.



Ananda

by Claudia Afshar

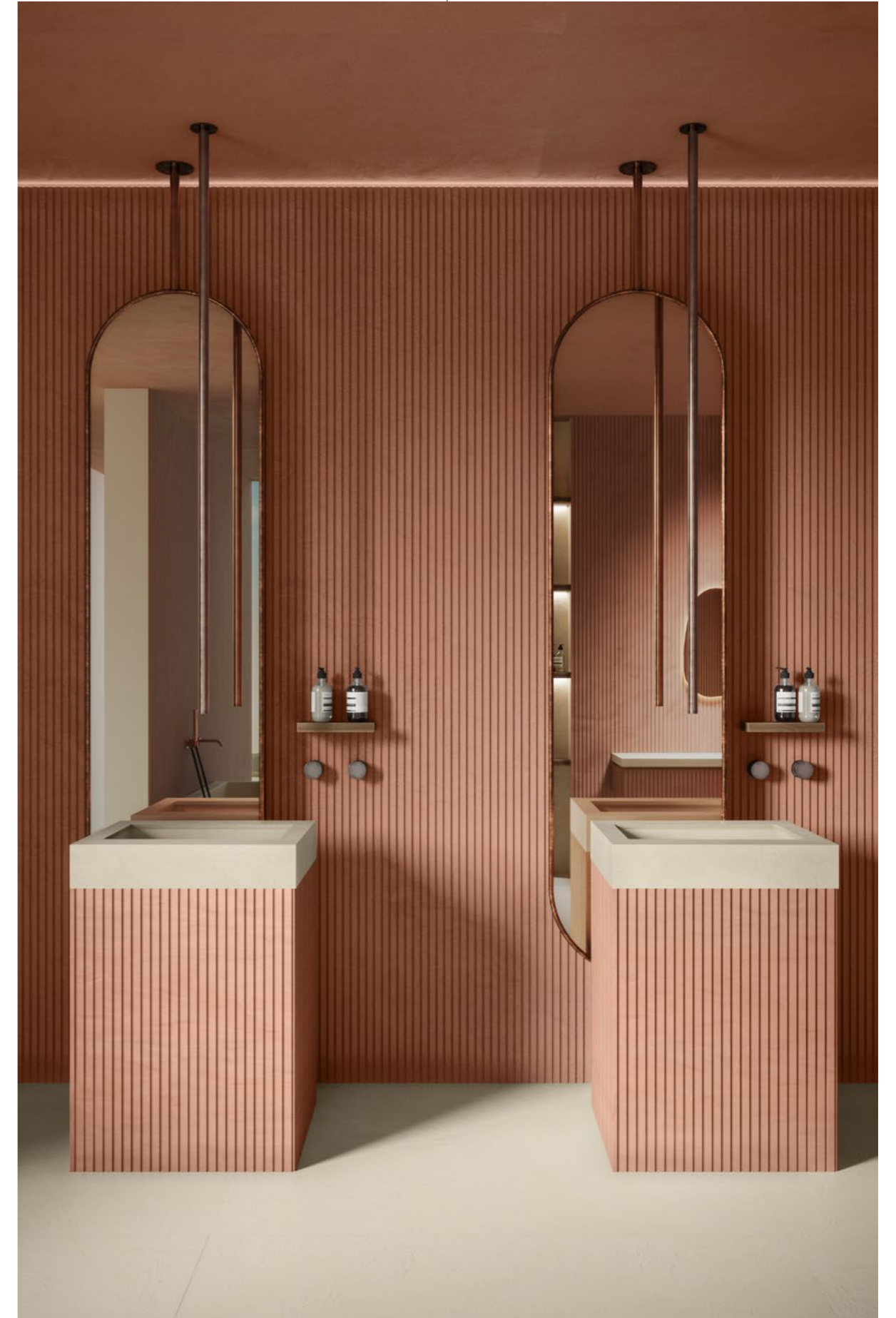
In Hindu, Ānanda means, among other things, "pure happiness", one of the highest states of human being. Thus, Claudia Afshar has created a striking open plan space that conveys warmth through a design of grooved materials.

She demonstrates the ability of small details to bring a fresh look to the bathroom, with playful accents and textures on all surfaces.



Designed by: Claudia Afshar
Year: 2023
Sink: Simplicity
Shower tray: Dekton® Rainfloor
Dekton®: Umber and Nacre

Designed to capture the essence of Dekton®, Claudia Afshar elevates the Simplicity sink on a bespoke pedestal in Dekton® Umber, which is grooved as a result of a delicate cutting of the material.





The designer envisions a warm space that embraces the user through the inherent connection with the earth and nature by Dekton® colors Umber and Nacre.



Sawaru

by Claudia Afshar

Touch is one of our fundamental senses to understand our relationship with our environment. It gives us a nuanced perception of surfaces. With this in mind, Claudia titled her project "Sawaru", the Japanese word for "touch".

A space conceived as a sanctuary, which explores the bathroom as a place of connection and self-care. Sawaru welcomes visitors through an entrance that conveys calm and tranquility. Light tones and textures combine perfectly with the smooth curves, creating an atmosphere for personal care and complete relaxation. This bathroom offers a dream spa experience.



Designed by: Claudia Afshar
 Year: 2023
 Sink: Reflection M
 Shower tray: Dekton® Rainfloor
 Dekton®: TK06 Marmorio and Nacre
 Silestone®: Nolita



Neutral and serene, the interior of this bathroom lies somewhere between the concepts of a personal spa and a homely haven. A recessed arch frames the shower area in the form of a bench, exploring ancestral hygiene rituals from a contemporary perspective.

Claudia experiments with the possibilities of materials, pushing the sink to the limit. In this way, by repeating a curved shape, she manages to create a skirt full of volume.

Featuring a minimalist and relaxed design, the entire bathroom project revolves around the relationship between curved and straight lines, generating a leisurely pace that allows you to relax.



REMY MEIJERS

X
The Bathelier



“A bathroom should be a space to unwind and clear the mind. It is a place where you start and end your day, so it should be as calm and relaxing as possible. It should also have plenty of room to move around, which is why it is better to refer to it as a bathing space rather than a bathroom.”

In 1995, Remy Meijers graduated with honors from the Department of Interior Architecture and Furniture Design at the Utrecht School of the Arts. In his work, all elements are perfectly in place, but behind the apparent simplicity of his interior designs lies a coherent and comprehensive vision that has been continuously honed over two decades.

Meijers' oeuvre encompasses not only interiors, but also architecture, accessories and furniture. According to Meijers' philosophy, these are not separate elements, but rather complementary parts of an intelligible whole.



Urban Hideaway

by Remy Meijers

Conceived as a set of architectural features that give character to the space, this bathroom has plenty of room for all the elements: a large shower for two, a large sink and a spectacular bathtub ideal for bathing.

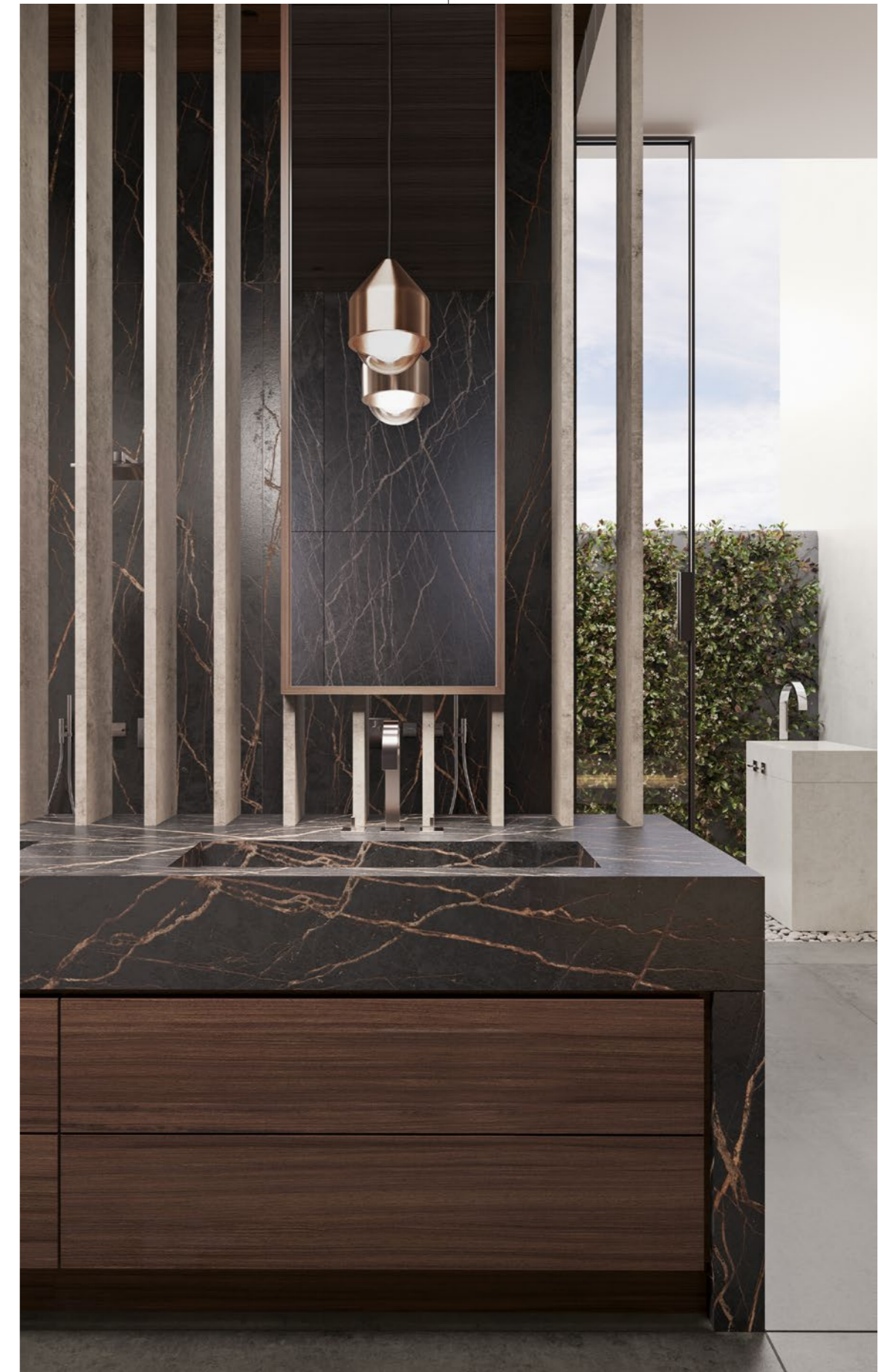
To complete this spa-like experience, the project features wooden elements for added warmth, a fireplace and an outdoor space with double shower and sink. The message is clear: self-care has become a fundamental part of our lives, and the bathroom is at the heart of it.

A large, open space where you can spend time and feel good about yourself. A place to unwind. Without distractions.



Designed by: Remy Meijers
 Year: 2023
 Sink: Reflection S
 Shower tray: Dekton® Rainfloor
 Dekton®: Lunar, Kreta and Laurent
 Decoration: Vases designed by O4Home in collaboration with Remy Meijers

Divided into two separate yet complementary parts, one of the most impressive areas in the project is reserved for the bathroom, highlighting the importance of this space in everyday life.





A solid volume presides over the outdoor area, incorporating a sink in the form of a fountain that makes the most of the technical performance of the material.

Sink: Silence S

Areas connected to the outside, but with plenty of privacy, a large open shower and more. The designer conceives a space that pushes the boundaries of the bathroom, moving towards new concepts of self-care.





The Palazzo

by Remy Meijers

In contrast to the historic architecture, Remy Meijers uses lightweight, contemporary elements with an essentialist design and straight lines, while retaining original ceilings, doors and windows to add a sense of warmth. An experience that invites you to indulge in the natural fusion of old and new.

The aim of this project is to ensure that the original elements of the space are maintained with an updated approach. To this end, Meijers combines decorative elements, such as the ceiling moldings and herringbone flooring, with contemporary materials, such as Dekton® and Silestone®, which are used for sinks and shower trays.



Designed by: Remy Meijers
Year: 2023
Sink: Marie Top L
Shower tray: Dekton® Rainfloor
Dekton®: Taga and Rem
Silestone®: White Zeus
Other products: Lamp designed by Keylight
in collaboration with Remy Meijers

The shower area is the centerpiece, dominating the center of the room. Its raised floor design preserves the original ceiling structure and gives it greater prominence.

A large volume made from Dekton® Rem doubles as a shower tray and is the central feature of the room. Visually connected to the screens through a large glass panel, Meijers suggests an outdoor space for contemplation.



The cladding, sink and shower surfaces are a contemporary twist to traditional materials in contrast to the wood and herringbone flooring.



DANIEL GERMANI

X
The Bathelier



“A visually appealing space is no longer enough to satisfy people. Their needs and behaviors are key to creating an engaging and holistic experience and, more importantly, for well-being to flourish.”

After majoring in architecture in his native Argentina, Daniel Germani spent almost a decade in Europe working on different creative and business projects. A highly innovative vision of design has seen him work as a creative director and designer for some of the world's most inspiring companies.

His multi-disciplinary studio, specializing in product design, design consultancy, interior design and architectural renovation, is based in Phoenix, Arizona, but Daniel travels around the world doing design work in partnership with leading global brands. His rationalist yet distinctive style is clearly influenced by the modern and Bauhaus movements. Its philosophy is simple: good design should always be honest and inspiring.



Ceppo

by Daniel Germani

In this project, Germani develops two separate vanity areas to adapt to the different needs of the users of the space. At the same time, it creates a more pleasant and playful feeling in the shower and bath area. The space maintains a balanced effect of personal sanctuary, where small daily rituals of self-care are explored as a way of enhancing well-being.

With a deep respect for the materials, Germani achieves a calm and serene space of large dimensions, in which the bathroom stands as the centerpiece of the home.

Designed by: Daniel Germani
Year: 2023
Sink: Silence M
Shower tray: Dekton® Rainfloor
Dekton®: GK07 Ceppo
Taps: Taps from Sailing collection by Fantini





The brutalist feel of the cladding, which echoes the traditional Ceppo di Gré stone from Lombardy, highlights the subtle, warm design accents throughout the space. It includes two large sink areas designed with Dekton® due to its high performance: resistance to stains, scratches, knocks, etc.

The Silence sink lives up to its name, providing a relaxed look and subtle lines. In combination with the Ceppo series from Dekton®'s new Pietra Kode collection, it underlines the timelessness of the materials used in the space.





Travertino

by Daniel Germani

Contemporary, intimate and sophisticated features make up a balanced project. Two walnut vanity units and a shelf provide additional storage space, allowing you to discreetly store toiletries or decorative items.



The view of the courtyard with its greenery is a peaceful oasis for relaxation. The shower, which is in a separate area, is a way of escaping from everyday life through the ritual of water. In this project, Germani transports us to Rome in all its glory.



The result is a clean and serene bathroom, which embraces the experience of light flooding the space. This water room reclaims a leading role that explores ancient bathing rituals from an updated perspective.

In a willful confusion between indoors and outdoors, Germani recreates a space for self-contemplation that goes beyond the traditional boundaries of the bathroom.

The project addresses several strategies that, when approached in a specific way, complement each other to give a complete turnaround to the bathroom, transforming it into a more open and flexible residential space that breaks with conventions.

Designed by: Daniel Germani
Year: 2023
Sink: Silence M
Shower tray: Dekton® Rainfloor
Dekton®: TK06 Marmorio and TK05 Sabbia
Taps: Icona Classic collection by Fantini

COLIN SEAH

X
The Bathelier



“The ideal bathroom is a sanctuary for holistic wellness, where body and mind are cleansed and nourished. Away from the hustle and bustle and distractions of the world around us, it offers a moment to immerse ourselves in healing sounds, aromas and textures.”

Colin Seah trained as an architect in the USA, but today he is the Design Director and founder of the Singapore-based studio Ministry of Design (MOD). His radically innovative approach to design and architecture leads him to question conventions and redefine spaces in every project.

Beyond spaces, Seah creates physical reflections on how design can act as a catalyst for change. He has overseen over 100 projects worldwide and has received numerous awards, including “Designer of the Year” by the International Design Awards USA (2010) and “Rising Star in Architecture” by Monocle.



The Collage

by Colin Seah

In life, as in art, we seek balance and harmony when its complexities threaten to pull us in different directions.

The Collage strikes a balance between a range of different and even contrasting colors to create a unique moment of holistic harmony. The inherent beauty and challenge of a collage is to achieve an "elusive balance". When this is achieved, the whole magically becomes more than the sum of its parts.



The Simplicity sink fits into a large volume, featuring a countertop that takes advantage of the large dimensions of Silestone® materials to build an extra-long surface to adapt to the space.



Chaos and order are the two cornerstones of Seah's project.

A bathroom space that explores the diversity of nature and the mix of materials, generating a collage that integrates the elements of the shower tray, in combination with the cladding, and the sink.

Designed by: Colin Seah
Year: 2023
Sink: Simplicity
Shower tray: Rainfloor
Dekton®: Soke and Laurent
Silestone®: Et Serena
and Ethereal Noctis



The Cave

by Colin Seah

Personal hygiene and bathing habits are undeniably primitive and fundamental to human beings. From this premise, Colin Seah explores a space reminiscent of a cave and introduces us to a primitive way of relating to the place in which we live.

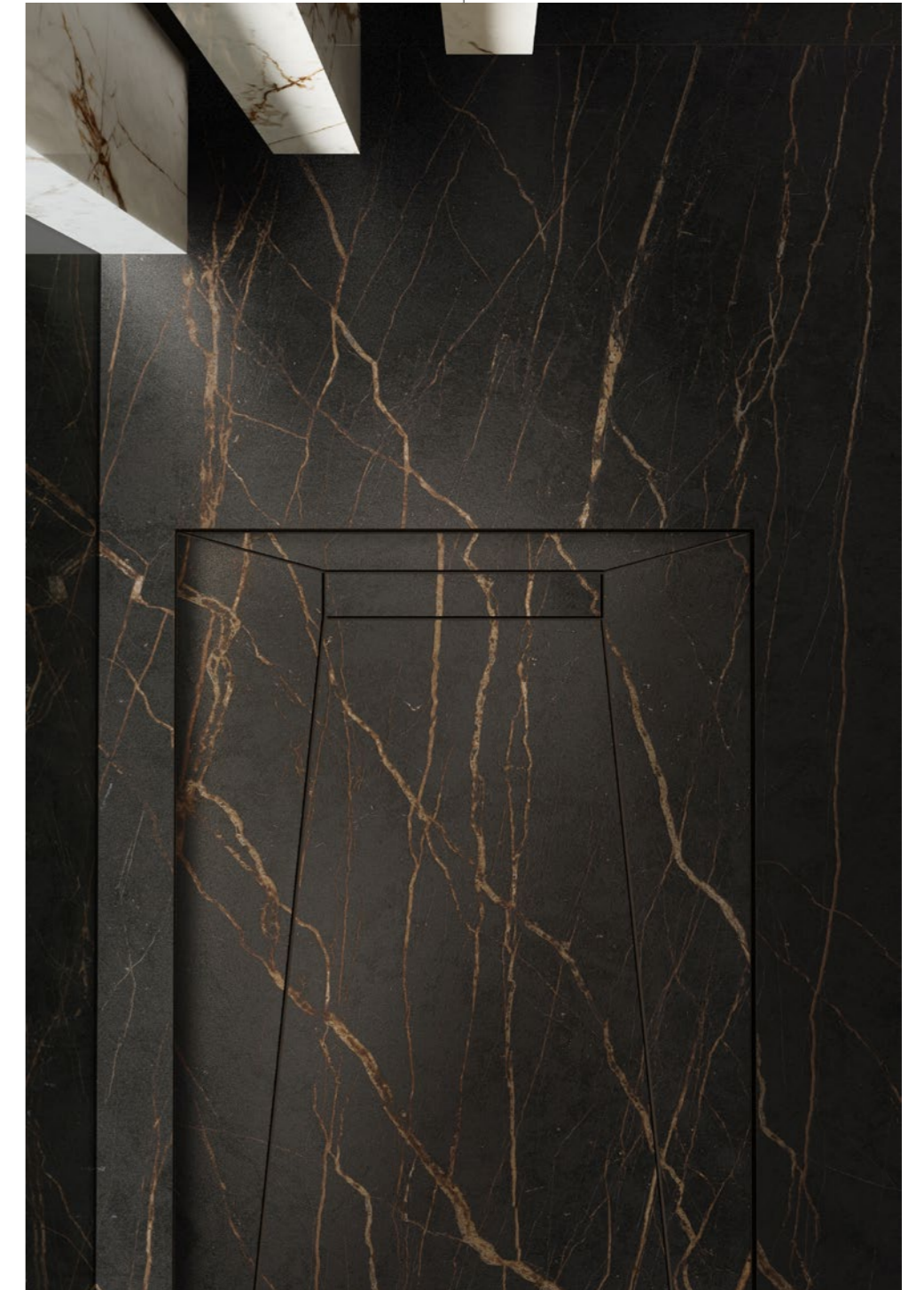
In this design, rituals come to life through the creation of a dramatic bathroom, characterized by sloping walls in deep earth tones, integrated lighting and a huge window at the back. This bathroom also reminds us of the most primitive form of architecture: the cave.



Designed by: Colin Seah
 Year: 2023
 Sink: Simplicity
 Shower tray: Dekton® Rainfloor
 Dekton®: Bromo, Laurent
 and Awake
 Silestone®: Coral Clay Color
 and Sienna Ridge
 Decoration: Gessi



The volume of the sink, made with the Reflection model integrated with Dekton® Laurent, recreates an almost mystical atmosphere. In the same way as an altar, this object elevates the moment of contact with water to a ritual, pondering how the bathroom has become an essential space for self-care and health.



An opening in the façade frames a privileged view of the exterior and floods the interior with plenty of natural light. This impressive area is reserved for the shower tray, making this moment a unique experience.

MUT DESIGN

X
The Bathelier



“Reconnecting with our body and mind to reach the ideal of healthy living has become a fundamental part of how we overcome stress in our lives. For us, the bathroom is that private, safe haven where this dialogue takes place.”

Specializing in product design, Alberto Sánchez and Eduardo Villalón are the design duo behind MUT Design, one of the leading studios on the international design scene and clear representatives of the new wave of Valencian designers. Since it was founded in 2010, MUT Design has received continuous recognition at major industry awards.

Its thoroughly contemporary style is a perfect balance between an essentialist design and a careful selection of materials and finishes. Today they are among the most popular and renowned designers of their generation and have collaborated with some of the most inspiring brands in design.



The Resilient House

by MUT Design

A home is as essential as a roof and four walls to shelter us, but above all it is the place that gives us the privacy and freedom we need to connect with ourselves, rethink our lifestyle and value well-being. Based on this premise, MUT Design suggests a space inspired by a kind of Roman bath in ruins delimited by the walls of a quarry, alluding to the origin of Cosentino®.



As an interior architecture program, MUT Design makes use of a series of volumes with Dekton® to create hollows in the space, completed with a bathtub and a sink where the Simplicity model is integrated. This project proves the material's ability to adapt to any type of surface and functional solution.



A completely uniform range of materials makes for a minimalist and serene space, interrupted only by the natural stone that emerges in reserved areas. The contrast highlights the clash of materials, thus elevating the presence of both.



Designed by: MUT Design
Year: 2023
Sink: Silence L
Shower tray: Dekton® Rainfloor
Dekton®: Nacre



Ellipse

by MUT Design

In this project, MUT Design is inspired by the expressionism and organic architecture of Torres Blancas in Madrid. The curved, spiral and seashell shapes so often found in nature are used here as an expression to convey emotions through shapes and textures.

It is a space that serves not only as a formal experiment but also as a functional one. To achieve this, a partitioning element plays with the different levels of privacy in an open bathroom space formed by truncated cylindrical modules that facilitate the flow from inside to outside and vice versa, and also explores new ways of understanding this piece as a fundamental part of today's home.



Designed by: MUT Design
Year: 2023
Sink: HLine Urban
Shower tray: Dekton® Rainfloor
Dekton®: VK02 Avorio and Argentium
Furniture: Sancal chair by MUT Design

Different spaces are generated through the volumes, playing with the levels of privacy of an open-plan bathroom. Using the same slat construction system, the HLine Urban sink is housed in a pedestal.

A shower area is concealed behind the cylindrical element, which ensures privacy, but is directly connected to the large exterior window.



State-of-the-art technology and innovative design for your bathroom. Beauty and functionality for a customized space.

At Cosentino® we have developed a wide collection of surfaces and features for bathrooms. From wall and floor claddings in different yet perfectly balanced formats, colors and textures, to attractive sinks and shower trays, carefully designed with great attention to detail and simplicity.

Change your vision of the bathroom. An all-round solution of high aesthetic and functional value to turn the bathroom into a complete experience of well-being and visual comfort.



The avant-garde design and the quality of Cosentino® materials merge in timeless bathrooms made to be lived in.

Environments designed by Cosentino® in which quality, sophistication and a holistic view of the space are paramount. Inspiration and solutions for any decorative style that will help you find your ideal bathroom with Cosentino®'s extensive portfolio of materials and products.

From industrial character to Mediterranean simplicity. A wide range of spaces rich in details and finishes to connect with any style.

Mediterranean



Classic



Industrial



Timeless





In this bathroom with a pure design and straight lines, natural light takes on a material dimension.

The play of light and shadow accentuates the contrast created by the subtle combination of two very similar, but at the same time very different Dekton® colors: VK03 Grigio, a color inspired by Grigio Alpi natural stone, and VK04 Grafite, a color that reinterprets dark limestones. The difference in color between these two shades of gray helps to create contrasts between light and dark full of intentionality, as in the lintels of the window

arches or in the transition space between the water area and the bedroom. VK04 Grafite also helps to accentuate the powerful beauty of the Reflection sink by enclosing it in a monolithic pedestal with a free-standing tap. The almost zero porosity of Dekton® ensures that this design will remain unaltered over time. The same applies to the Exelis shower tray, which is made from Silestone®.



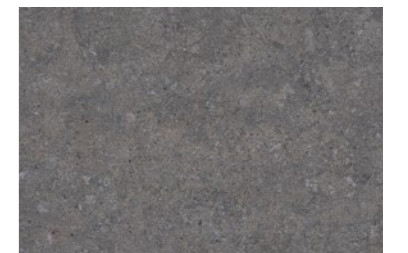
Silestone® Exelis



Dekton® Reflection S



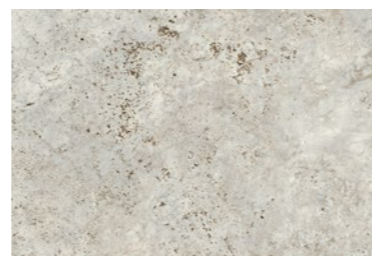
Dekton® VK03 Grigio



Dekton® VK04 Grafite



Dekton® TK06 Marmorio



Dekton® TK05 Sabbia



Silestone® Exelis



Dekton® Silence S



Inspired by the timeless beauty of Travertine marble, this bathroom reinterprets the concept of Roman baths to create a modern space with relaxed lines.

Thanks to the use of two totally different patterns inspired by the same stone, the sense of spaciousness is enhanced. The color chosen for the walls was Dekton® TK06 Marmorio, a recoding of Travertino Navona, the stone out of which ancient Rome was built. Its distinctive parallel lines add solemnity to the whole. As for the flooring and sink area, the color chosen was Dekton® TK05 Sabbia, a stylized version of Travertine characterized by a strong

horizontality and veining that maximizes the expressiveness of natural stone while giving it the highest performance of ultra-compact stone. TK05 Sabbia was also used for the Silence sink, achieving total integration, while the simplicity of Silestone® Exelis was chosen for the shower tray.



The stone that has shaped contemporary Milan has become a popular design.

Both residential and commercial spaces surrender to the beauty of Ceppo di Gré, whose whimsical structure features large, attractive gray and blue patches.



Dekton® GK07 Ceppo



Dekton® VK04 Grafite



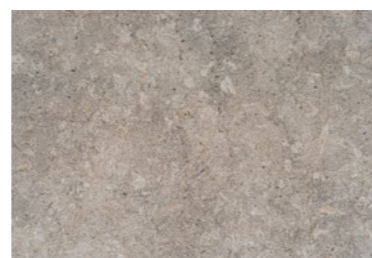
Silestone® Exelis



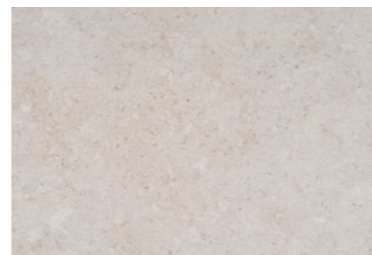
Silestone® Marie TOP L

The new GK07 Ceppo redefines this beautiful pattern to give it greater visual strength and the technical features of the ultra-compact Dekton® stone. Large format slabs allow for a more seamless design, with fewer joints. This finish, used on floors and skirting boards, is combined with VK04 Grafite, another of the colors from Dekton®'s new collection, Pietra Kode. To create a contrast with the stone tones, two Silestone® designs were chosen: the shower tray features the Exelis model; while the Marie TOP L was the model chosen for the countertop sink.





Dekton® VK03 Grigio



Dekton® VK01 Nebbia



Silestone® Exelis



Dekton® Silence L



The simplicity of Vicenza stone and the purity of Dekton®'s large format design come together in VK03 Grigio and VK01 Nebbia.

Both contribute to creating a Japandi-style bathroom where the warmth of the rich taupe gray range of VK03 Grigio combines with the wooden elements and creates a contrast with the creamy base dotted with spots of VK01 Nebbia, the color used for the countertop and

the integrated Dekton® Silence sink. The shower tray features the Exelis model by Silestone®, in large format. This surface has very low porosity, which reduces daily maintenance and improves hygiene in the bathroom.



Nature is very present in this bathroom that opens onto an interior garden and features a combination of materials and textures in neutral tones.

In dialogue with the wood and rattan design elements, Silestone® and Dekton® surfaces blend seamlessly into the overall design. The space features VK01 Nebbia on walls and floors, bringing a calm and classic touch with its texture inspired by Italian Vicenza stone.

This light gray tone is combined with the deep Dekton® VK04 Grafite, which was used for the Dekton® Reflection sink and the floors in the wet area. Its dark background features a pattern that creates a sense of continuity while reinterpreting the texture of limestone. The perfect frame for the Silestone® Exelis shower tray.



Dekton® VK01 Nebbia



Dekton® VK04 Grafite



Silestone® Exelis



Dekton® Reflection L

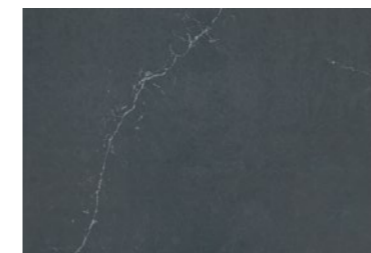




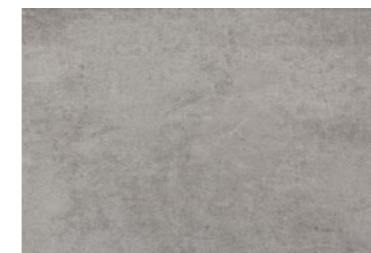
Modern and elegant, this bathroom presents a space in which straight lines take center stage.

The balance between the forms creates a sculptural atmosphere featuring a two-color combination that spans a wide range of grays and blacks. In this composition, both Silestone® Charcoal Soapstone and Dekton® Kreta have an equal role.

Used on floors, walls and bathtub cladding, the texture of Dekton® Kreta adds depth and creates a greater sense of spaciousness thanks to its light tone inspired by classic cement floors. Meanwhile, Silestone® Charcoal Soapstone gives the sink countertop a dramatic effect, adding an elegant touch. Above it, Silestone® Marie TOP L sinks add a touch of finesse with their rounded corners. Finally, the shower tray features the Rainfloor model by Dekton®, perfectly integrated thanks to the use, once again, of Dekton® Kreta.



Silestone® Charcoal Soapstone



Dekton® Kreta



Dekton® Rainfloor



Silestone® Marie TOP L



Dekton® Blanc Concrete



Silestone® Negro Tebas

This bathroom with a renewed industrial style combines metal elements, wooden beams and exposed brick with innovative Cosentino® surfaces.



Silestone® Symmetry M



The ecru shade of Dekton® Blanc Concrete aged white fits perfectly with this decorative style. Its spots and small veins in shades of white and beige make the space look bigger and enhance the natural light flooding in through the large windows.

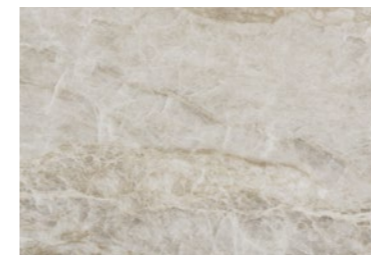
To create a contrast, the surface chosen for the countertop and the three sinks with their simple lines and geometrical look was the pristine, glossy Silestone® Negro Tebas. Supported by a lightweight, aged metal frame and complemented by three large, dark-framed mirrors, together they create a balanced and captivating piece.

Monolithic forms give character to this temple-like bathroom in which textures inspired by natural stone establish a dialogue with the surrounding landscape, which is connected to the bathroom through floor-to-ceiling openings.

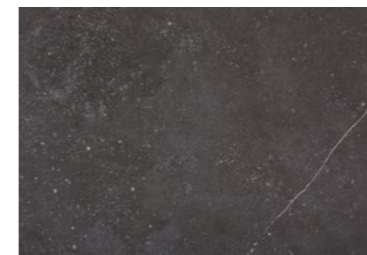
Dekton® Fossil, a color featuring a very powerful natural finish with the aged look typical of fossilized stones, was the material chosen for both the countertop and the floor. In dialogue with this natural texture, Dekton® Taga, an elegant gray shade with a marbled look inspired by Taj Mahal quartzite, was the material chosen to clad the walls.



The design of the sink is undoubtedly the star of this space. The Custom Silestone® Sink Negro Tebas is mounted on a horizontal base that runs through the space and counterbalances the verticality of the rest of the elements.



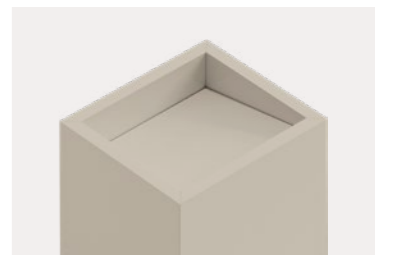
Dekton® Taga



Dekton® Fossil



Silestone® Negro Tebas



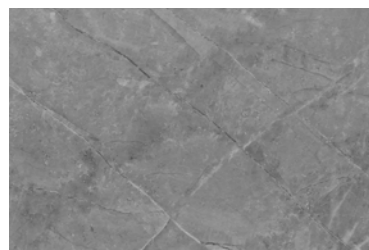
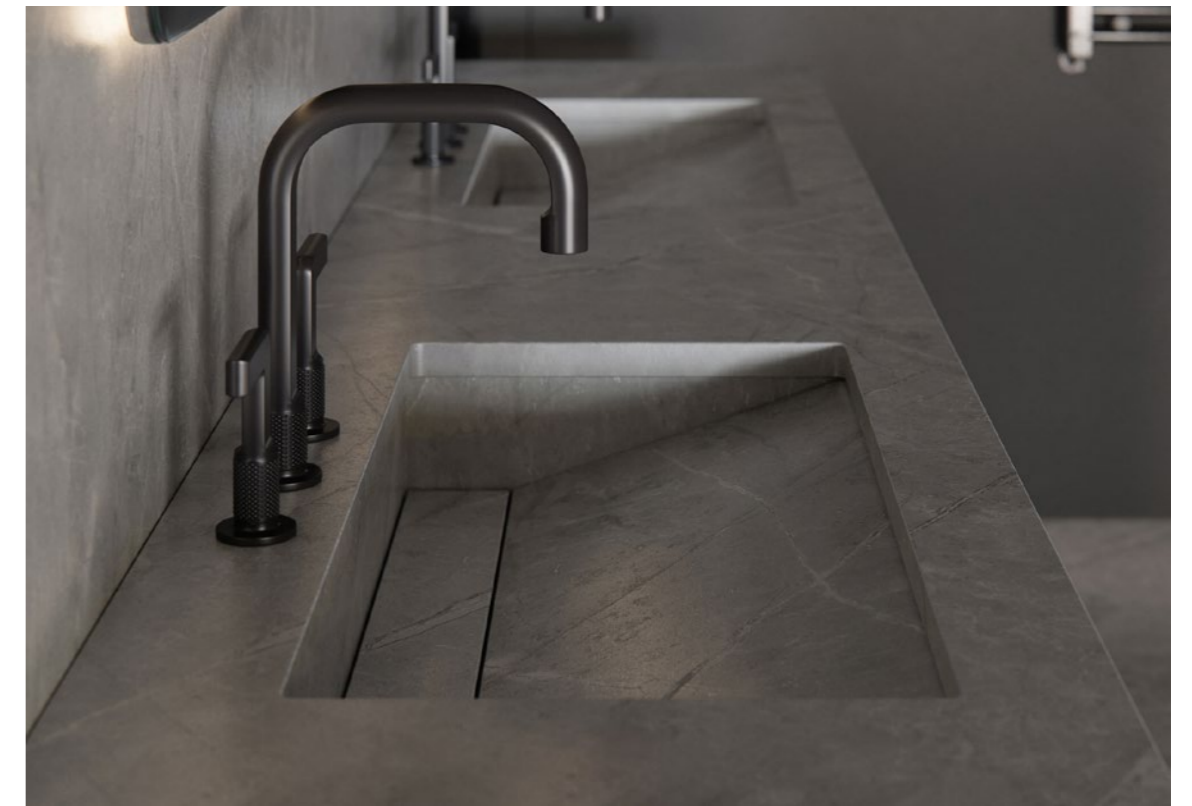
Custom Sink



A uniform and elegant look characterizes the style of this contemporary bathroom in which order is expressed through the materials used.

Straight lines dominate the space, accentuated by the minimalist design of all the elements and, more specifically, of the Dekton® Simplicity sinks. To create a block-like feel, a sense of unity, a single Dekton® color was chosen for walls, floors and sinks.

Specifically, the color chosen was Dekton® Sogne, which gives a neutral feel to the space. Its gray shade ranges from the classic cement textures to the typical veining of natural stone, helping to create an atmosphere that breaks the boundaries between the industrial and the classic. An architectural proposal that is complemented by black taps and backlit mirrors that add dynamism to the space.



Dekton® Sogne



Dekton® Simplicity



Silestone® Marie TOP L



Dekton® Rainfloor

The updated classic style of this luxurious bathroom is expressed in every detail.



Dekton® Awake



Dekton® Nacre



The use of light, neutral colors, contemporary touches such as black taps and a sophisticated texture inspired by natural stone create a space that exudes a quiet elegance. To maximize the light, the surfaces, furniture and Marie TOP L sinks feature light colors.

Used on the sink area, floor and walls, Dekton® Awake shines in its own light and elevates the tone of the entire room. Its design inspired by Paonazzo stone gives an

elevated look with its thick veins in shades of light gray, terracotta cream and subtle blues. To define the wet area, such as the bathtub and shower - perfectly integrated thanks to the use of Dekton® Rainfloor-, the color chosen was Dekton® Nacre, a more neutral tone that contributes to creating a more relaxed space.



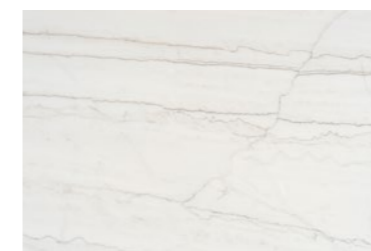
A combination of black and white dominates this urban style bathroom with city views.

The elegance in this bathroom comes from the elevated design pieces used, such as the golden taps, the black freestanding bathtub and the striking front vanity unit supporting the geometrically shaped Dekton® Silence sinks.

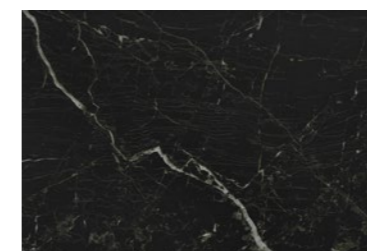


These elements create a dialogue with the contemporary feel of Dekton® Neural, whose design provides a strong sense of continuity. Its fine, pale veins run through its marbled background in light cream tones, creating an enveloping effect.

To create contrast and separate the different spaces, the walls of the shower area – which features a Silestone® Exelis shower tray – are clad in Dekton® Somnia, a black color with brown and white veins.



Dekton® Neural



Dekton® Somnia



Silestone® Exelis



Dekton® Silence M





Dekton® Nacre



Dekton® Umber



Dekton® Rainfloor



Silestone® Integrity Evita L

The honesty of this rustic Mediterranean bathroom design is made clear in every aspect.

The harmony and commitment to tradition is evident in every aspect of this bathroom, from its vernacular architecture to its natural materials and finishes. To create this vibrant atmosphere, a combination of two warm colors was used on the walls and floors. Both bring innovation and, at the same time, fit in perfectly with the style.



The powerful terracotta shade of Dekton® Umber is, probably, the star of the space. Alongside this color, the cream tone of Dekton® Nacre – a color with a texture similar to that of lime plastering and featuring subtle details and a degraded texture – was also used, bringing authenticity and character to the space, creating a contrast and establishing a dialogue with Umber. The Silestone® Evita – Integrity sinks blend subtly into the space, without pretension. In the shower area, clad in Dekton® Nacre, the use of a Dekton® Rainfloor shower tray provides continuity to the room.



Dekton® Eter



Silestone® Symmetry S

This minimalist, single-colored bathroom goes for all black.



The combination of eclectic elements, such as a classic style mirror and a contemporary vanity featuring a Silestone® Symmetry sink, is rounded off by the categorical choice of this color, which manages to create a sensorial and deep space. The result is a quiet atmosphere, conceived to create a cozy private area, totally innovative.

To achieve this sense of uniformity and to create a perfect black space for the design elements, Dekton® Eter was chosen. Its dark granite structure in black and gray tones gives this surface a rich and complex texture, perfect for creating such contemporary atmospheres as this trendy bathroom.



A calm and, at the same time, very elegant atmosphere thanks to the many bronze details, such as the alcove frames, round mirrors and taps. In addition, two Cosentino® surfaces were chosen to elevate the design of the room: Silestone® and Dekton®.

The pure and neat texture of Silestone® White Zeus was chosen for the cladding of the floors, the countertop, the sink - featuring the rounded design Silestone® Marie TOP L-, the Silestone® Kador shower tray with anti-slip strips,

and one of the walls. For all applications, a glossy, light-reflecting finish was chosen, creating a perfect dialogue with the fine crackle effect of Dekton® Helena, the color used for the front of the sink unit and the rest of the walls in the room. This rich color featuring a combination of white and gray shades with patterns inspired by Onix natural stone, elevates the design, adding elegance and sophistication.



Silestone® Blanco Zeus



Dekton® Helena 22



Silestone® Marie TOP L



Silestone® Kador Suite

The quietness of white is interrupted and overwhelmed by an elegant combination of textures and finishes in this contemporary bathroom.



Re-imagine the most personal space in your home. Create a unique experience in which the most beautiful and functional Cosentino® surfaces are transformed into one-of-a-kind, warm and exclusive spaces.

From wall and floor cladding in different yet perfectly balanced formats, colors and textures, to attractive sinks and shower trays, carefully designed with great attention to detail and simplicity. Solutions of great aesthetic and functional value to suit every requirement and style of bathroom, which redefine the way in which we experience such a personal space and feeling of well-being.



Villa Hartl / Promenade, Austria



Casa Contreras La Ventana

Mexico City, Mexico

A balanced design using
Dekton® in a luxury
home in Mexico City



Dekton® Opera



U Interior Design Casa Decor 2022

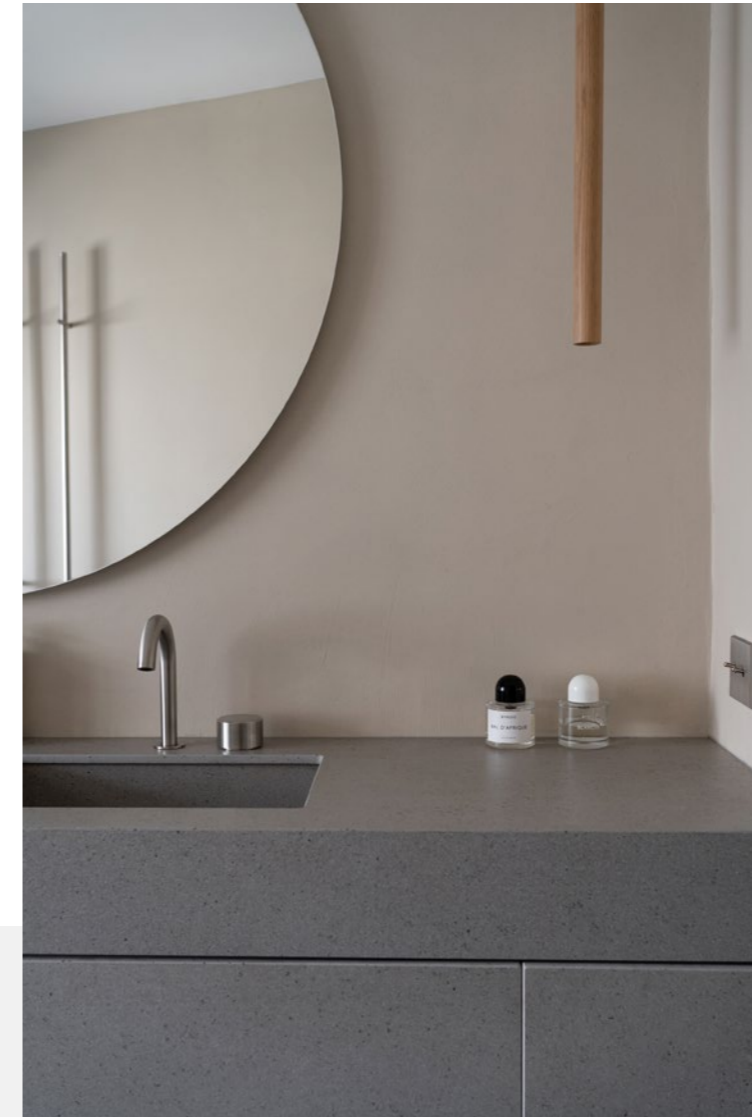
Madrid, Spain

A bathroom combining modernity and classical design inspired by early 20th century Paris and reminiscent of the Art Deco style, the space features Jacob Delafon's "Grand Boulevards" bathroom collection.



Dekton® Awake

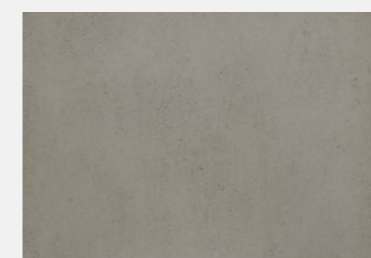
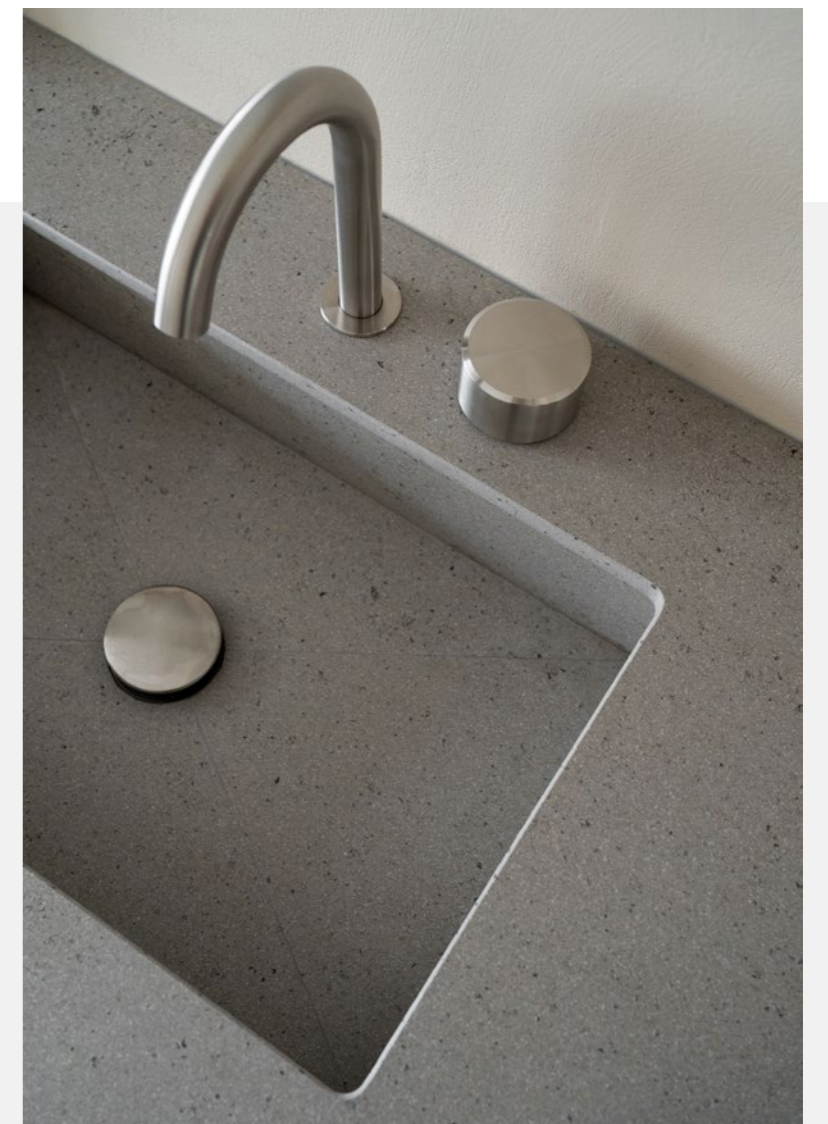




J'aime tout chez toi

Paris, France

Studio Costa Molinos
turns to Dekton® for the
innovative vanity unit in the
home of French influencers
J'aime tout chez toi.

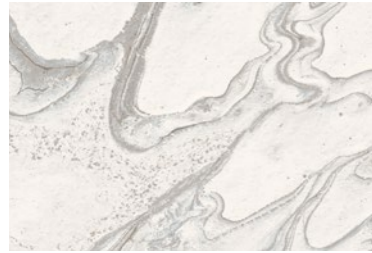


Dekton® Strato

Single-family home

Seville, Spain

The bathrooms in the house have been designed as true luxury spaces that act as a spa.



Dekton® Liquid Sky 22





Tel Aviv Apartment

Tel Aviv, Israel

A total look in Dekton® Opera for a feeling of spaciousness in the main bathroom, while at the same time conveying a sense of monumentality.



Dekton® Opera





Silestone® Pearl Jasmine

North House

Melbourne, Australia

The bathroom spaces in this house are both modern and timeless and, above all, very attractive.

The bathroom furniture is wall mounted to create a clean, floating visual effect.





Art House in Dallas

Dallas, Texas, USA

Dekton® Dancæ is reminiscent of sand moving in the desert thanks to the different shades of beige that cross its surface and capture the essence of the movement.

Inspired by the quartzite of the Taj Mahal, Dekton® Arga, from the Stonika collection, recreates the luxury of natural stone without the need for maintenance.



Dekton® Dancæ



Dekton® Arga

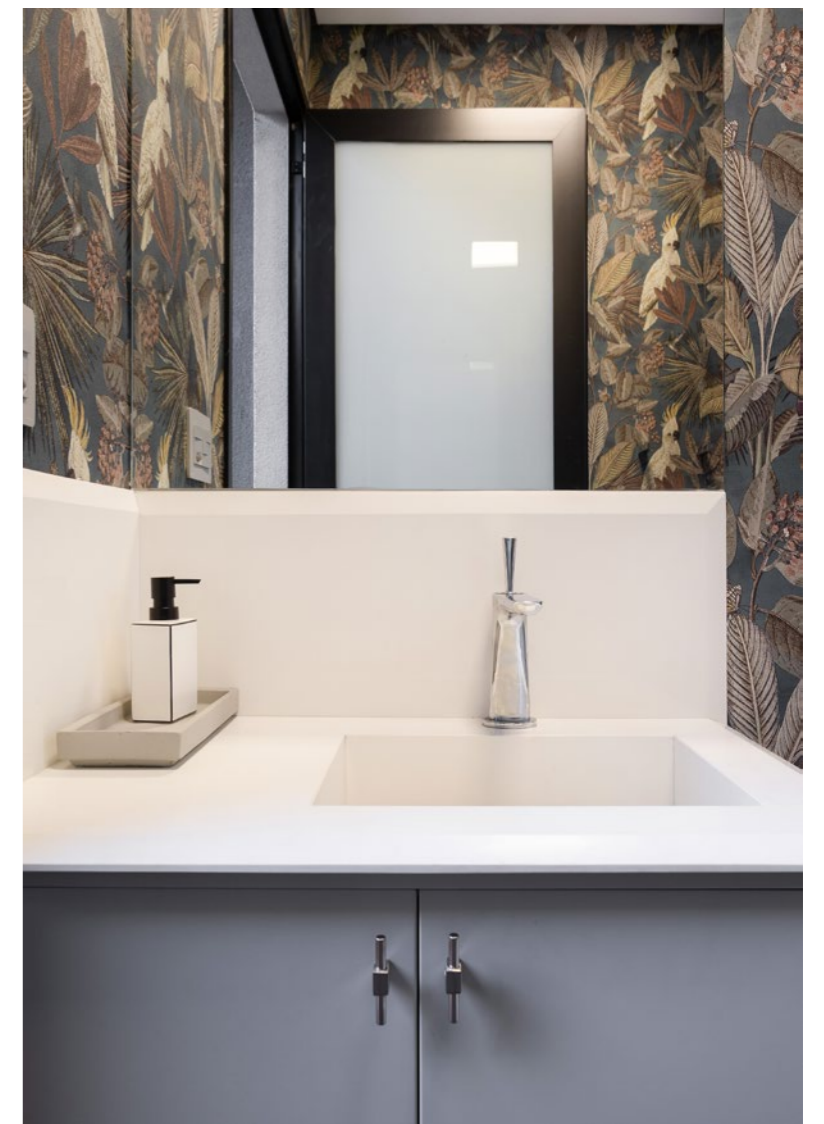




Home in R o Claro

R o Claro, S o Paulo, Brazil

Every detail was taken care of in this bathroom, combining countertops with lacquered wooden doors, designer handles and wallpaper.



Silestone® White Zeus



Silestone® Noka



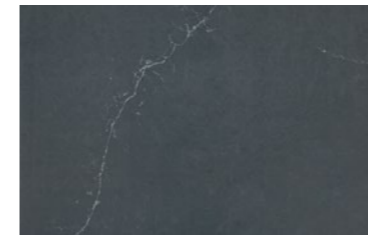
Girasol building

Madrid, Spain

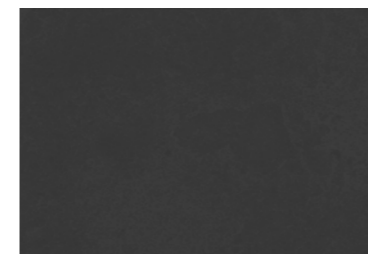
A range of dark tones that dominate the bathrooms, which are made entirely in Silestone® Eternal Noir or in a combination of Dekton® Eter and Silestone® Charcoal Soapstone.



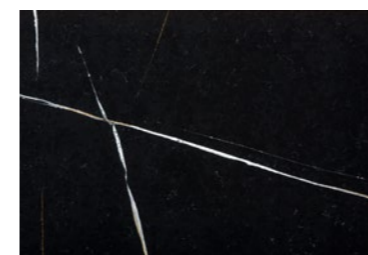
Silestone® Marie TOP L



Silestone® Charcoal Soapstone



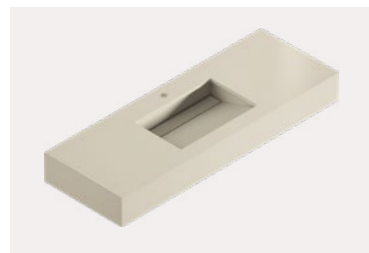
Dekton® Eter



Silestone® Eternal Noir



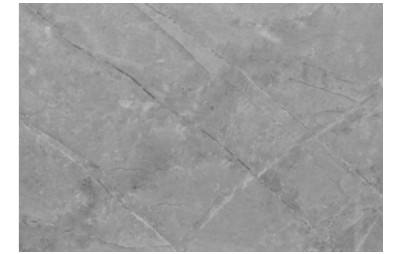
Silestone® Symmetry



Silestone® Simplicity



Dekton® Portum

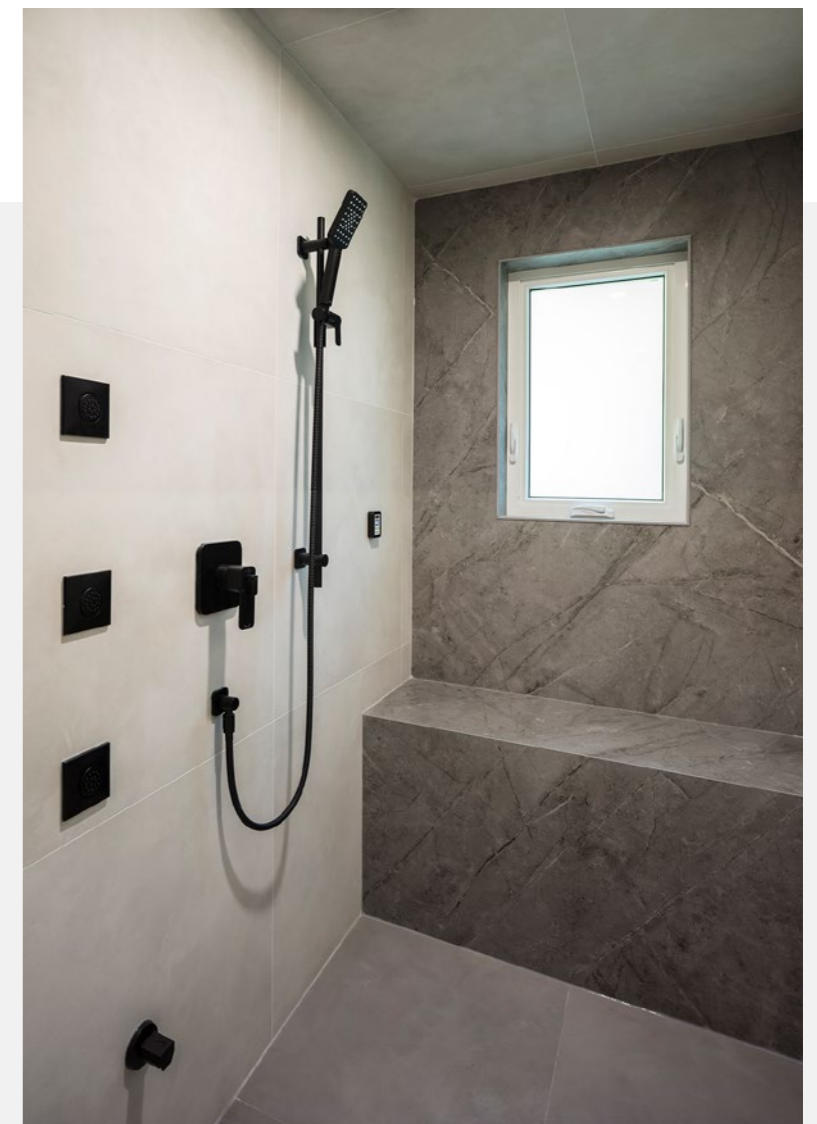


Dekton® Vera

Amble Green Residence

British Columbia, Canada

The bathroom spaces in this house are the definition of relaxation and elegance.



Design Zage

Singapore

By combining style and functionality, Dekton® Bergen creates a sophisticated and timeless atmosphere in the master bathroom.



Dekton® Bergen





Modern Tel Aviv Apartment

Tel Aviv, Israel

Dekton® Laurent was the surface chosen for the master bathroom, a color that provides quite a "masculine" look. As for the guest bathroom, the color chosen was the warm Dekton® Liquid Shell, which was used in combination with Dekton® Aeris for the floors.



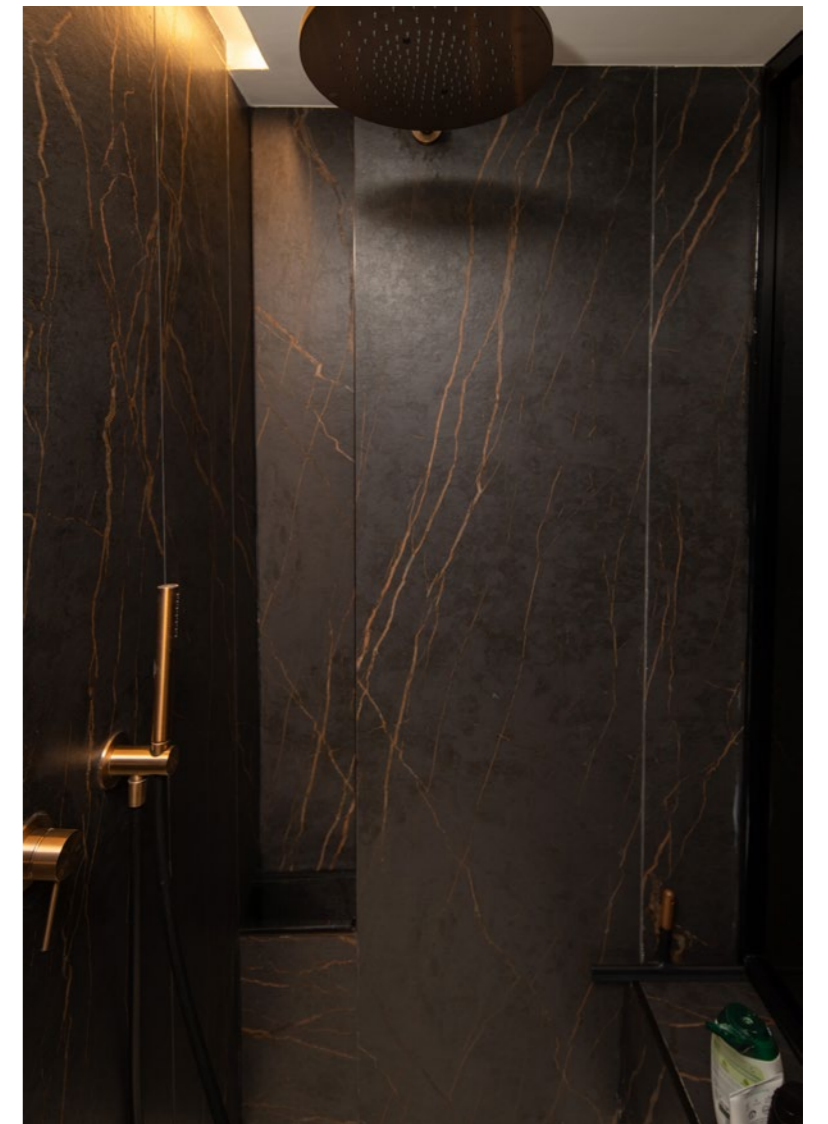
Dekton® Aeris



Dekton® Liquid Shell



Dekton® Laurent

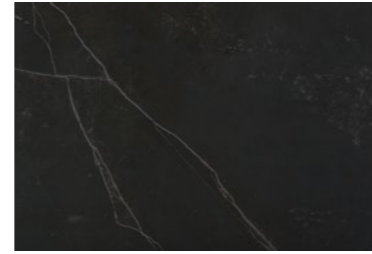




Dekton® Lunar



Dekton® Kreta



Dekton® Kelya



Home in Pradejón

La Rioja, Spain

For the cladding of wet areas, the large format model was used to minimize the number of joints, which are always vertical. This helps in terms of functionality and gives it a more attractive appearance.



Comprehensive bathroom concept



Flooring and cladding

Combine the sinks and shower trays with Silestone®, Dekton®, and Sensa surfaces, available in a wide variety of designs, formats, and finishes.



Sinks and countertops

Sinks and countertops in different Dekton® and Silestone® finish in combination with the rest of the bathroom elements.



Shower trays

Made with Dekton® Grip/Grip+ and Silestone® sandblasted, our sinks and shower trays can be customised to any space.



How it's made

Custom design

All our products are manufactured to order using fast manufacturing systems. This allows us to offer a tailor-made design for each client.



Total integration

Visual and aesthetic continuity. The same surface for all of your bathroom: floor, cladding, shower tray, sink, countertop...



Variety of formats, colors and textures

Cladding and flooring in different formats, colors and textures in perfect balance with Silestone®, Dekton® and Sensa materials.



Large format

Fewer joints ensure greater cleanliness and hygiene. The extra-large slabs provide visual flow and continuity.



C·Bath Quickship



C·Bath Quickship

C·Bath features elegant and functional models to infuse relaxation into your bath space.



Quickship Sinks

Versatility, functionality and design.

C-Bath offers a wide range of sink styles and designs, so you can choose the colors and finishes that suit you. The materials offer the highest performance in terms of quality, durability and hygiene thanks to characteristics such as large format, minimum joints, protection against bacteria and low porosity.

Classic lines or modern innovation
- What do you prefer?



Blanco Zeus



Desert Silver



Et. Statuario

Silestone® Evita Standard Sink

The new Evita sink is made from a single piece of Silestone®, thanks to the unique Integrity technology. Jointless and without right angles, it guarantees easy cleaning, maintenance and hygiene.

The Evita series is manufactured in Silestone 12 mm polished finish with a soft touch. Functionality, technology and integration to offer the perfect solution to the most demanding projects. Available in three countertop sizes and colors.



Variety of colors and textures



Water and stain resistant



Maintenance free



Scratch & impact resistant

Quickship Shower trays

The safe, sustainable and functional choice.

C-Bath presents a wide range of shower trays with minimalist styles and designs.

Thanks to its surface, all models have the highest anti-slip ratings of the application regulations, maintaining a pleasant barefoot finish.



Aeris



Kreta



Rem

Dekton® Gocce Standard Shower Tray

Cosentino presents Gocce, a new generation of shower trays. An extremely slim and light design, with soft slopes and a nice and delicate non-slip texture thanks to our Dekton® Grip+ technology.

Dekton® Ultracompact provides the perfect integration for your bathroom. The material is resistance to bumps, stains, and scratches thanks to its zero porosity. Gocce redefines the concept of design and elegance for the shower space. Available in a variety of colors and formats easily customizable on-site.



Customization possibilities



Easy installation & cost optimization



Variety of sizes



Abrasion-resistant

Dekton® Flooring, Cladding & Rainfloor solution

The adaptable and versatile solution for any space,

Thanks to its light format with an array of possibilities, everything just got a lot simpler. Its reduced thickness means that it can be cut quickly and adjustments can be made on site with tools for ceramic tiles.

Rainfloor solution

Solution according to the different design trends in the shower area. Combine Dekton® with any evacuation system available on the market: grilles in steel, ABS or covered with Dekton® itself. An elegant and quality product to give a touch of distinction to the bathroom.

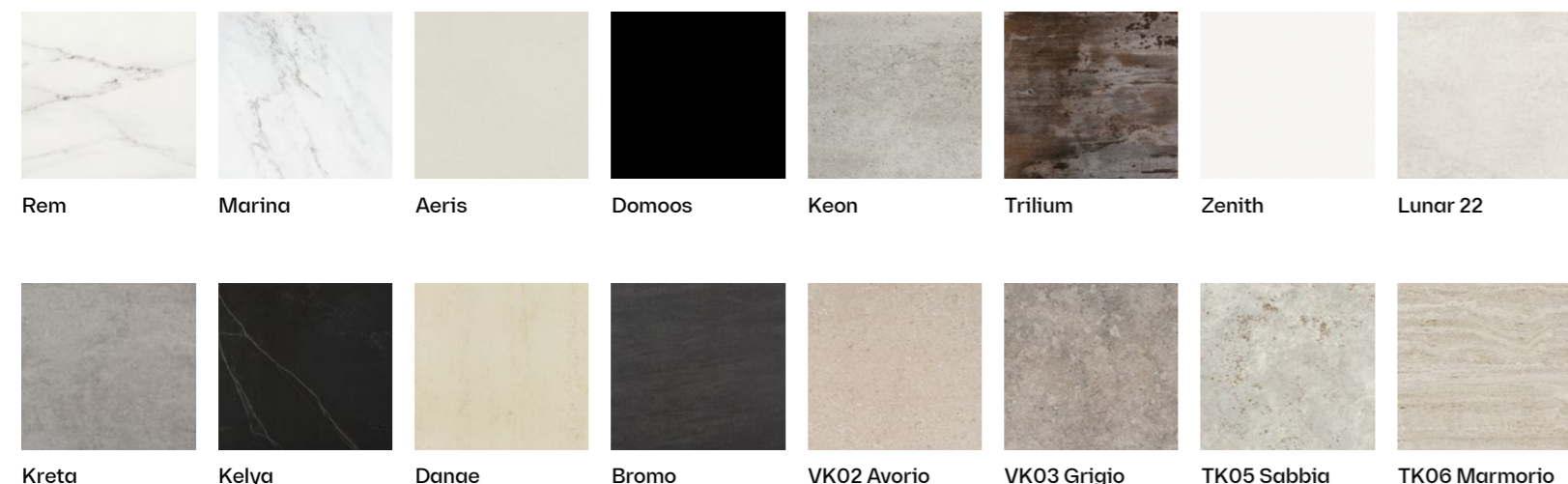
Available Sizes
56" x 56" / 56" x 28" / CTS sizes on site or on demand*.

Available finishes
Please, check possibilities according to color. The anti-slip treatment Grip or Grip+ can be applied on Project request*.

* Please, check availability.



Flooring, Cladding & Rainfloor Quickship Colors



Dekton® Optimma Shower Wall

Optimized Dekton® format. The functional and hygienic solution for your bathroom cladding.

Enjoy Dekton®'s unmatched properties in your bathroom with Dekton® Optimma Shower Wall. Its large format allows for visual continuity and minimal jointing, the perfect solution for a transited space exposed to moisture.

Available Sizes
96" x 64"
96" x 32"

Available Thickness
8 mm



Design with purpose



Cost-effective

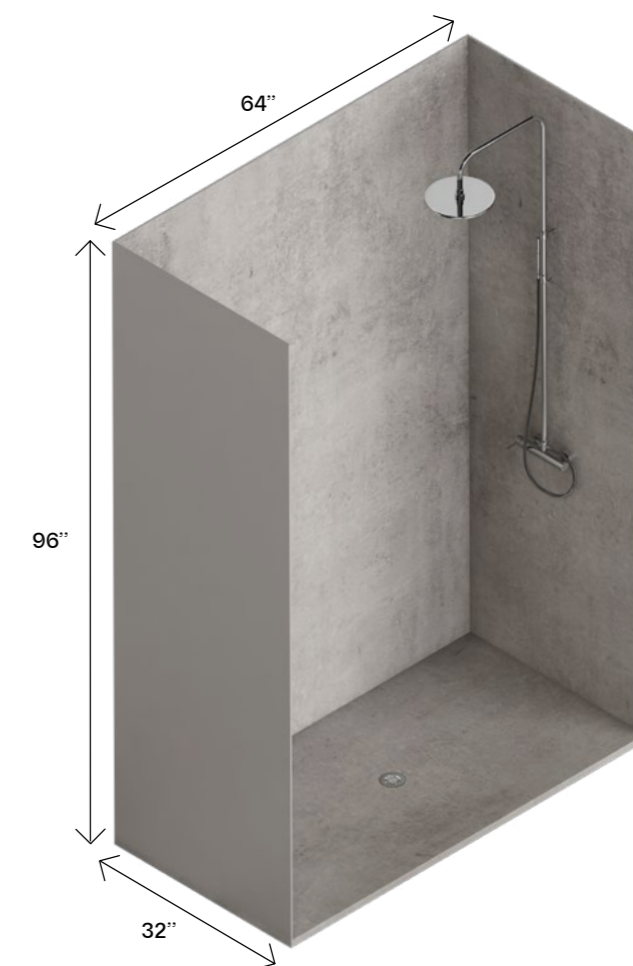
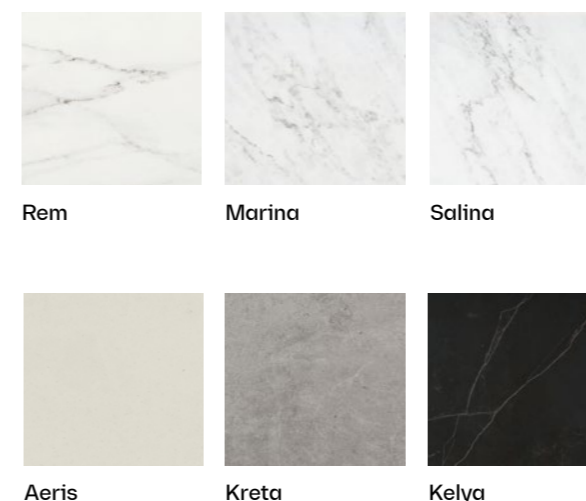


Easy to install



Design match

Optimma Shower Wall Quickship Colors



Materials

The state-of-the-art materials developed by Cosentino® bring unique, warm and avant-garde spaces to life.

The high performance and the variety of formats, colors and textures of Cosentino®'s materials allow for countless design possibilities. Silestone®, Dekton® and Sensa contribute to the design of visually uniform spaces that seamlessly integrate all the features: floors, cladding and furniture, sinks, countertops and shower trays.

Innovative materials that inspire the design of the future and create exclusive bathroom spaces in which beauty and functionality go hand in hand.



Dekton®. The Ultra-compact Stone.

25
Year
Warranty
DEKTON®

Dekton® is an ultra-compact stone that takes inspiration from the beauty and processes of nature and reinterprets them through unique technology.

Dekton® is functional beauty in a high performance material that breaks the boundaries of architecture and design.

Dekton® is stone

Dekton® is a sophisticated blend of over 20 minerals extracted from nature.

Dekton® is a totally inorganic material with unbeatable hardness and strength properties that does not deteriorate.

Dekton® is ultra-compact

Dekton® is the only material in the industry that uses a 25,000 tn press in its ultra-compact process.

Dekton®'s exclusive press generates a pressure equivalent to 2.5 times the weight of the Eiffel Tower, resulting in a material with no weak points and almost zero porosity.

Dekton® is sintered

Dekton® perfects in a few hours what nature creates in thousands of years.

Particle Sintering Technology (PST) binds mineral particles together to achieve a homogenized and compacted internal structure.

Dekton® is technique

Dekton® is a high performance, multi-purpose material for the world of architecture and design.

Its strength, variety of formats, sizes and installation options make it perfect for all types of applications and construction solutions. It withstands the most demanding conditions, even in its 4 mm thickness.



Dekton® Features

The beauty of peak performance.
The beauty of imagining with no limits.



Abrasion-resistant

Dekton® withstands abrasion better than granite and porcelain, making it ideal for all interior and exterior applications, including façades and flooring in busy commercial spaces.



Scratch and impact resistant

Dekton®'s great resistance to impact and scratches makes it perfect for everyday use. Its hardness equals quartz, scoring 7/10 on the Mohs scale of mineral hardness.



Water and stain resistant

Dekton®'s variety of thicknesses allow it to be used in applications where resistance to wind or impact are a project requirement.



Non-combustible

Dekton® is classified A1, which certifies it as a non-combustible material capable of withstanding high temperatures without burning.



Resistant to extreme temperatures

Its thermal conductivity, mean bending strength and low coefficient of expansion make it ideal for projects exposed to sudden changes in temperature, frost, wind or heat. In addition, it can be installed with minimal joint spacing.



UV rays resistant

Dekton® is unaffected by ultraviolet rays. Its color will not fade or degrade over time, maintaining the same appearance as the day it was installed in any interior or exterior application.



Variety of sizes

Dekton® is available in both small formats of 28" x 28" and large formats of 126" x 56", perfect for giving visual continuity to large spaces with a minimum number of joints.



Variety of thicknesses

It is available in thicknesses of 3, 2, 1.2, 0.8 or 0.4 cm (Dekton® Slim). A thickness for every application, always ensuring the highest performance.



Variety of colors and textures

Each Dekton® collection offers a myriad of colors in a wide range of finishes, from ultra-gloss to matte or velvet.



Customization possibilities

Dekton® offers the possibility of customizing colors and complex cuts, thus creating unique pieces that result in unforgettable spaces and open up limitless design possibilities.



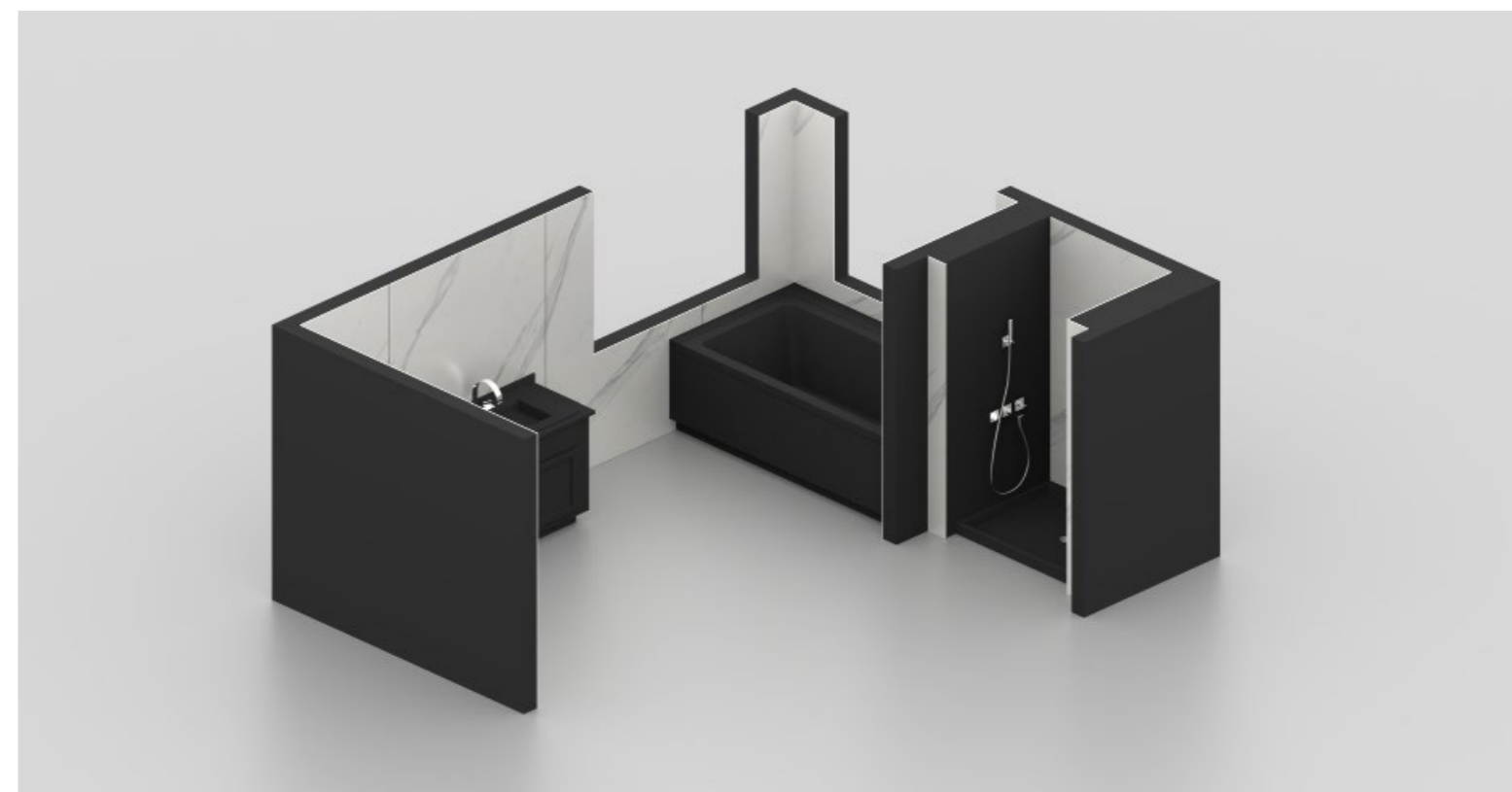
Easy installation & cost optimization

Lower cost and lighter weight with the Dekton® Optimma format (102" x 39" x 0.4 cm thickness), specially designed and manufactured for the most common vertical cladding applications.



Creation of continuous spaces

Thanks to its properties, Dekton® can be installed with virtually imperceptible joints, thus ensuring color uniformity over the entire surface and covering large spaces in a continuous and natural way.



DEKTON® SLIM
Designed by COSENTINO

Dekton® Slim 4mm

All the properties of Dekton®
in an ultra-thin surface,
unique in its category.

Large format and minimum number of joints

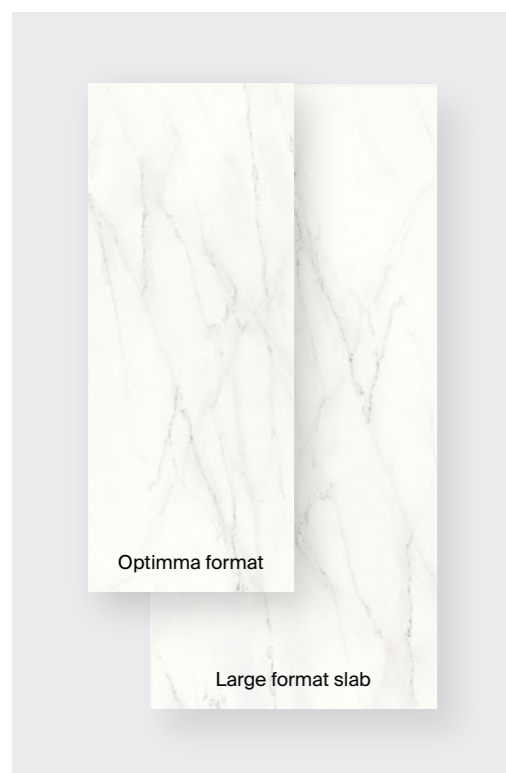
Large format,
4 mm thick slabs offer limitless
design possibilities and are very
easy to install and transport.

Ideal for cladding and flooring,
both indoors and out.

Dekton® formats

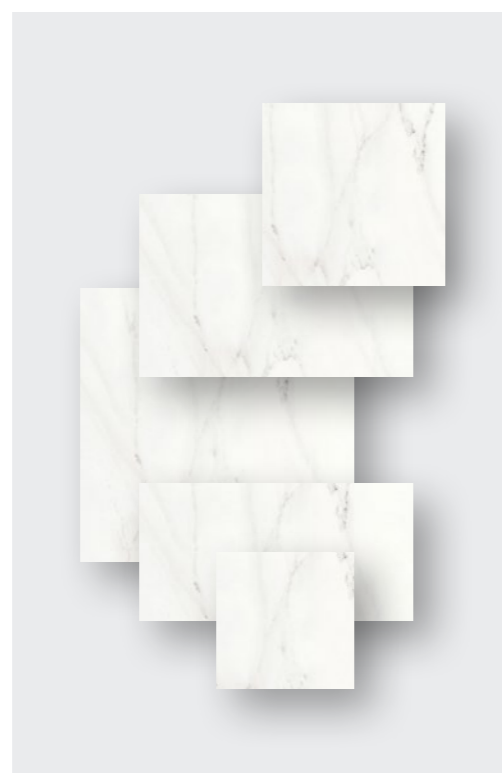
Flexible and versatile. For any space.

Whatever the project, indoors or out, and however complex it may be, Dekton® offers a variety of thicknesses and standard formats customized to meet the functional and creative needs of architects and designers.



Large format

Optimma format → 102" x 39"
Large format slab → 126" x 56"



Others formats

28" x 42"
28" x 56"
28" x 63"
56" x 31"
56" x 42"
56" x 56"
56" x 63"
Custom formats



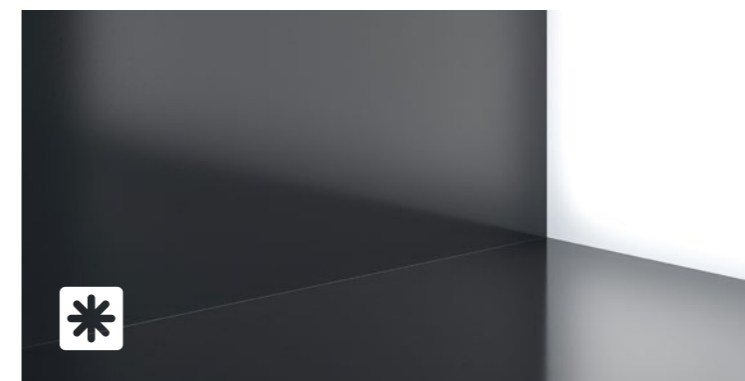
Thicknesses

0.4 cm (with mesh, cladding only)
0.8 cm
1.2 cm
2 cm
3 cm

Dekton® textures

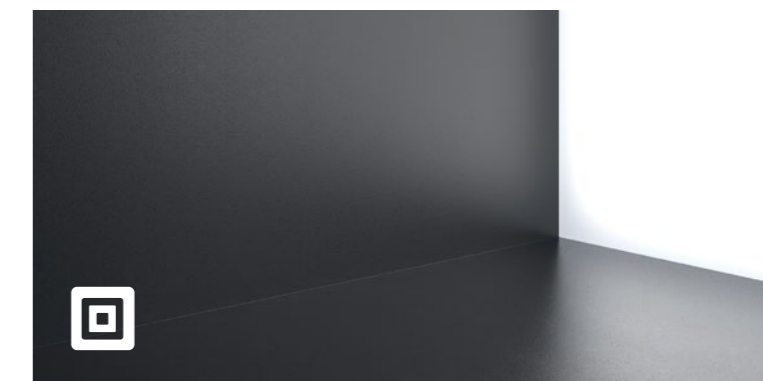
Different material sensations. A rich variety of shades.

Dekton® comes in different textures so that the only limit is the imagination of the architect or designer: from an ultra-glossy finish, to matt or velvety textured finishes.



X-Gloss

A bright, dazzling finish achieved through mechanical polishing, without the need for glazes or other materials.



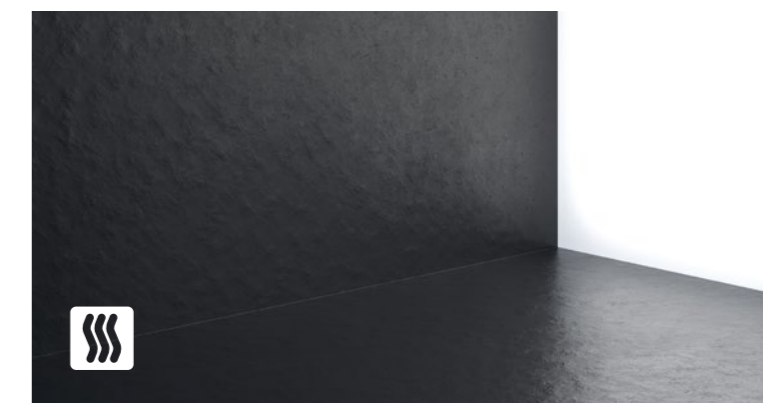
Matte

The matt texture aims for a natural, shine-free look, ideal for a harmonious and timeless finish. Most Dekton® products come in this finish.



Velvet

Dekton®'s velvety texture. The materials chosen in Velvet create a feeling of warmth and comfort. This texture is perfect for classic colors, with veins.



Matte and Textured Velvet

Matte and Textured Velvet textures combine the warmth of velvet with the roughness of a textured, imperfect material. It is perfect for emulating the finish of natural stone.

Silestone®.

The ultimate mineral.

HybriQ surface

Silestone® is a hybrid surface made of a blend of high-performance premium minerals, quartz, and recycled materials designed to bring color and texture to interior spaces.

Acid and scratch resistant

Silestone® is highly resistant to scratches and impacts, as well as to external agents and acids common in everyday kitchen use.

Impact resistant

The high impact resistance of Silestone® allows for the handling of hard objects (pots, trays, etc.) with total peace of mind.

Stain resistant

Silestone® is a non-porous surface that is highly resistant to stains from coffee, wine, lemon juice, oil, vinegar, makeup and many other everyday products.

Silestone® Advantages

Silestone® is extremely durable in kitchens, bathrooms and other spaces exposed to constant activity and use. In addition, it offers an unlimited range of colors and textures.

Silestone® has many advantages, including low maintenance, high resistance to stains and scratches, and a low fluid absorption rate. This resistance to fluids and its minimal joints make Silestone® the ideal solution for places where liquids are present. Silestone® is hard-wearing and allows prolonged use over time to last a lifetime.

The properties of Silestone® are the result of constant years of innovation that guarantee maximum hygiene and safety.



Silestone® HybriQ+ Technology

HybriQ is a technology developed by Cosentino® consisting of an environmentally friendly manufacturing process and a renewed formula for Silestone® surfaces based on minerals and recycled materials.

More innovation

More design

More sustainable

HybriQ+ uses a minimum of 20% recycled materials, 99% recycled water and 100% renewable electric energy.

Same performance

Silestone® with HybriQ+ keeps all the quality, durability and warranty features that have made Silestone® an industry leader.

This new generation maintains the high quality that characterizes Silestone® surfaces.



99%
Recycled water

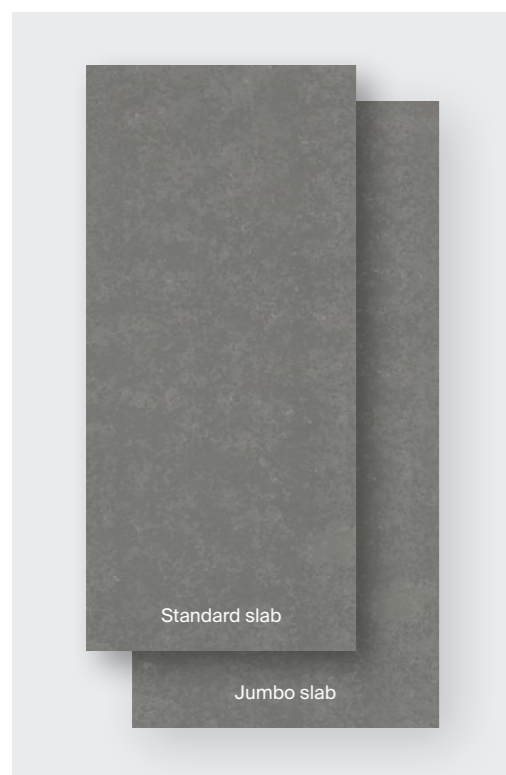
100%
Renewable electric energy

0%
Water discharge

at least 20%
Recycled materials

Silestone® formats

Multiple possibilities for indoor applications.



Large format

Jumbo slabs – 128" x 63"
Standard slabs – 120" x 55"

Jumbo slabs

Cosentino® offers Silestone® slabs in Jumbo format (128" x 63" max.) This format allows large surfaces to be created with a minimum number of joints, design versatility and improved hygiene.

This optimizes the use of the slab and minimizes waste.



Others formats

24" x 12"
24" x 16"
24" x 24"
16" x 16"
12" x 12"

Custom formats



Thicknesses

1.2 cm
2 cm
3 cm
Custom thicknesses by combining different pieces together

Silestone® Textures.

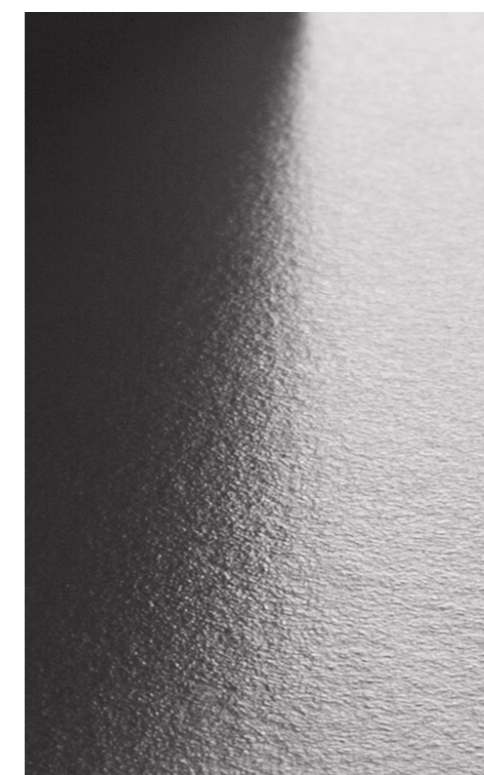
Surface sensory perception.

In order to adapt to all styles, Silestone® comes in different textures for any of its applications. Polished, Suede or Volcano are three possibilities that let your imagination run wild and provide your worktops, floors or walls with the texture you have always wanted.



Polished

Extremely glossy and smooth texture with an intense and consistent color.



Suede

A matte finish which offers a unique soft and pleasant feel.



Soft sandblasted (Anti-slip)

Surface available exclusively in the shower tray range to guarantee maximum anti-slip safety.

Sensa by Cosentino® Protected Natural Stone

Sensa by Cosentino® is premium, maintenance-free natural stone brought to you by Cosentino®, a world leader in the natural stone industry. Sensa by Cosentino® is treated with a revolutionary stain-resistant treatment called SenGuard, and comes with a 15-year warranty against staining.

Applications

Bathroom countertops.
Stain-proof natural beauty

Enjoy the design, durability and resistance of natural stone without worrying about stains. Sensa by Cosentino® quartzites and granites are treated with a revolutionary stain-resistant treatment that will protect your countertop and keep it looking as good as new.

Textures

Unique designs
for one-of-a-kind surfaces

The colors and textures of Sensa by Cosentino® features the patient and whimsical design of nature. Each of the available shades has a texture that produces different effects and sensations: suede, polished or caresse.

SenGuard Treatment

Cosentino® applies an invisible, long-lasting treatment to quartzite and granite, which is chemically integrated into the material allowing it to breathe. This technology increases its powerful natural properties and prolongs its life.

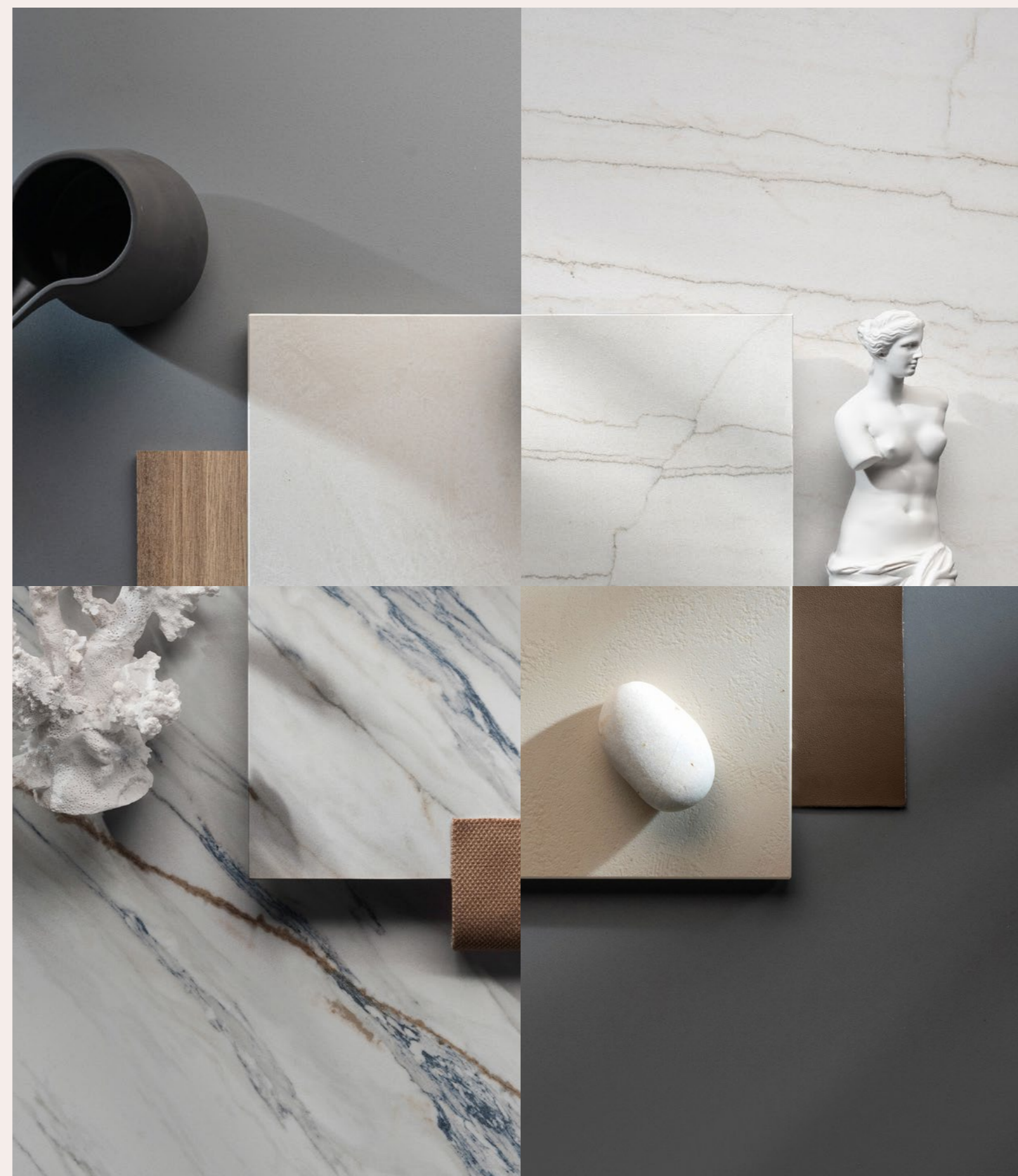
The process changes the surface tension of the stone, enabling the material itself to prevent liquids from penetrating it.



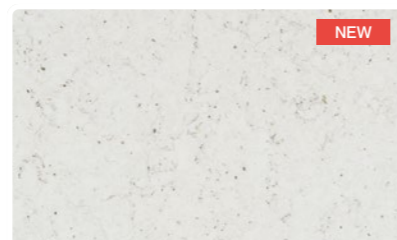
Innovative colors and textures to design spaces full of character and originality.

Silestone®, Dekton® and Sensa surfaces come in a wide variety of colors and textures: uniform, veined, etc. From classic iconic stones to new designs in solid colors, innovative patterns and textures that go beyond the visual dimension to offer a unique sensory experience.

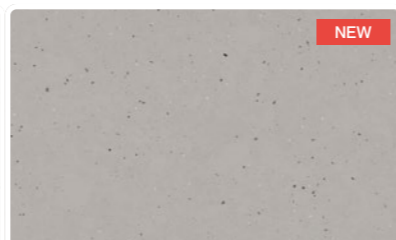
Innovation and technology in design. A range of versatile colors and textures to give character and originality to any bathroom.



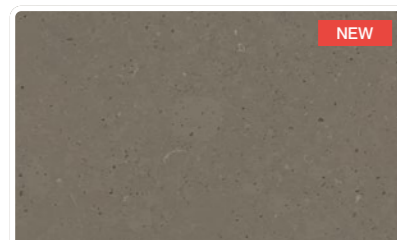
Colors



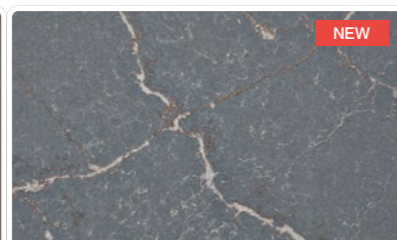
Silestone Lime Delight



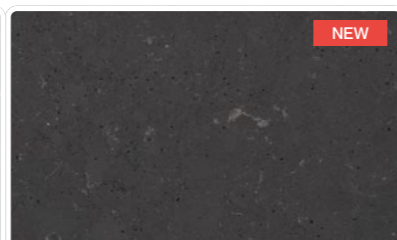
Silestone Concrete Pulse



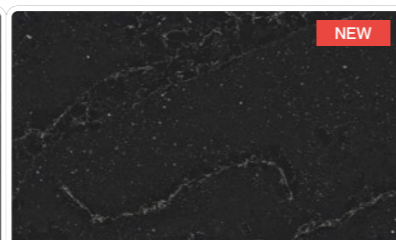
Silestone Brass Relish



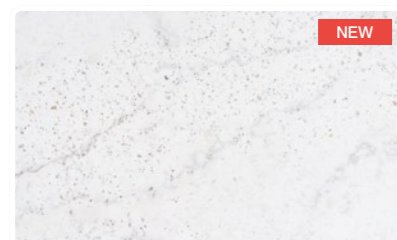
Silestone Parisien Bleu



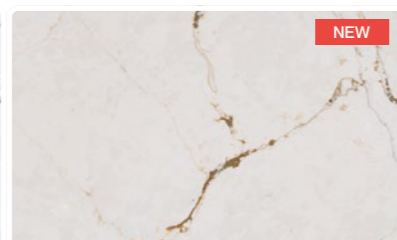
Silestone Cinder Craze



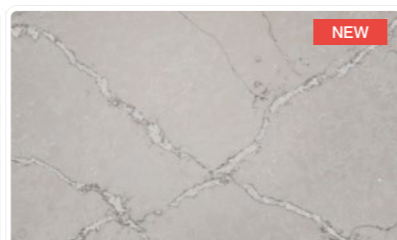
Silestone Romantic Ash



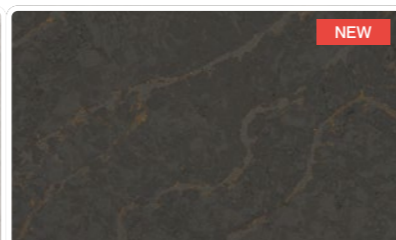
Silestone Eclectic Pearl



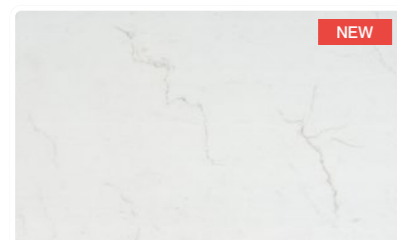
Silestone Versailles Ivory



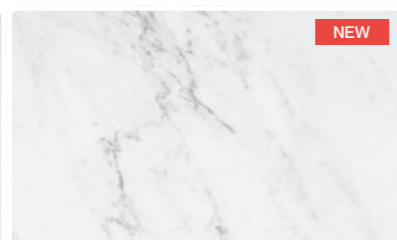
Silestone Victorian Silver



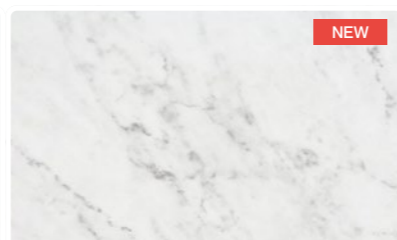
Silestone Bohemian Flame



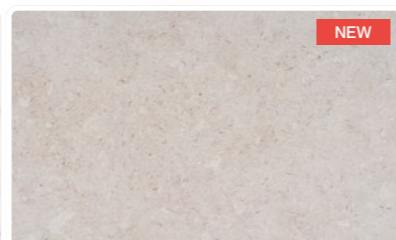
Dekton Laguna



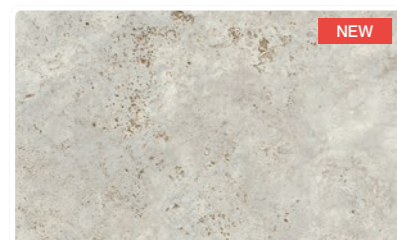
Dekton Salina



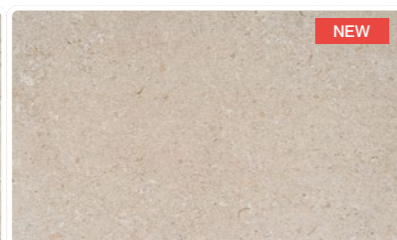
Dekton Marina



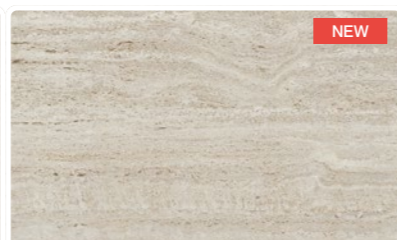
Dekton VK01 Nebbia



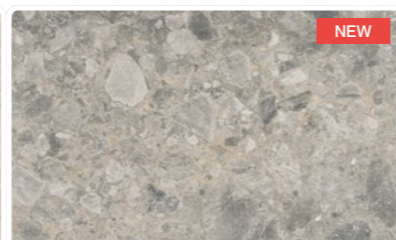
Dekton TK05 Sabbia



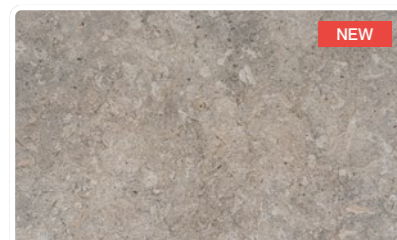
Dekton VK02 Avorio



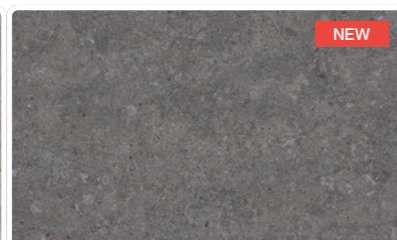
Dekton TK06 Marmorio



Dekton GK07 Ceppo



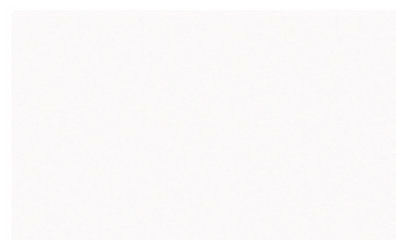
Dekton VK03 Grigio



Dekton VK04 Grafite



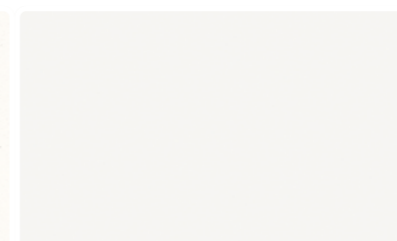
Dekton Uyuni



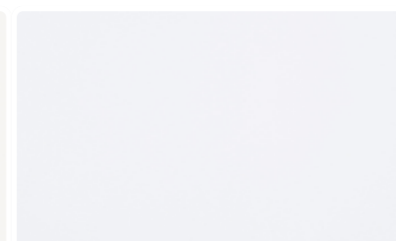
Silestone Iconic White



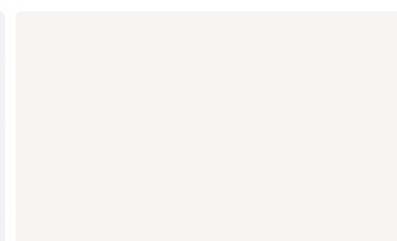
Silestone Blanco Zeus



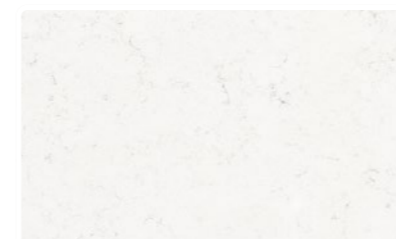
Dekton Zenith



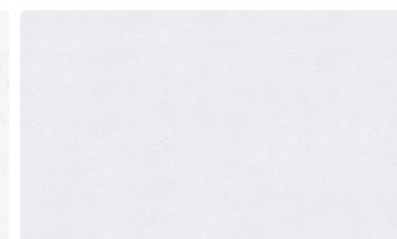
Silestone Miami White



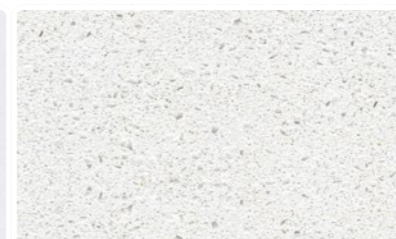
Dekton Halo



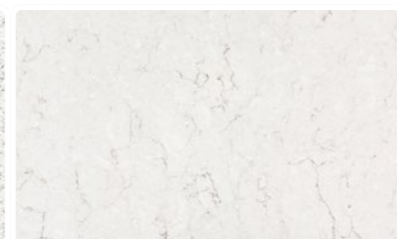
Silestone Miami Vena



Silestone White Storm



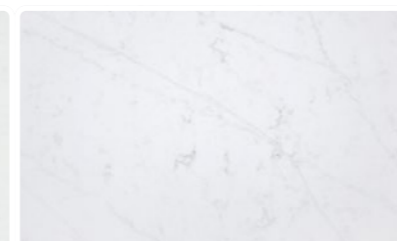
Silestone Blanco Maple 14



Silestone Snowy Ibiza



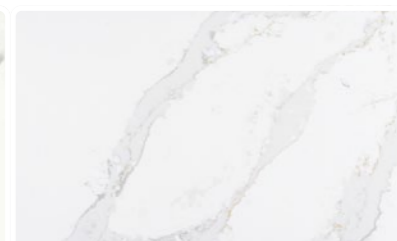
Dekton Malibu



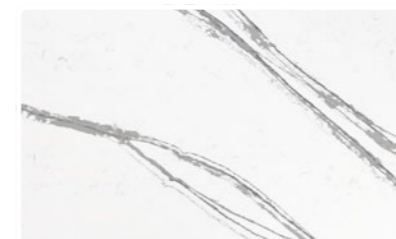
Silestone Et. Statuario



Dekton Kairos 22



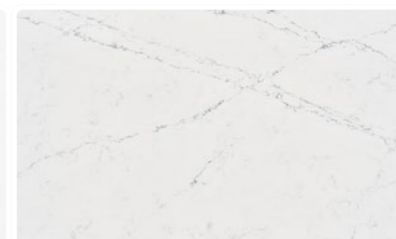
Silestone Calacatta Gold



Silestone Et. Bella



Silestone Bianco Calacatta



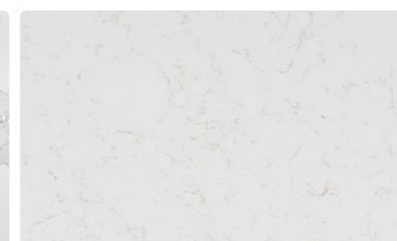
Silestone Ethereal Indigo



Silestone Ethereal Glow



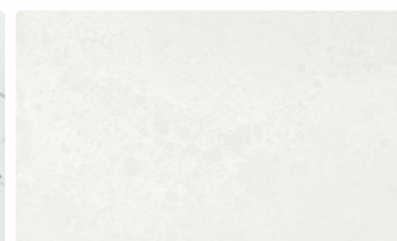
Silestone Ethereal Dusk



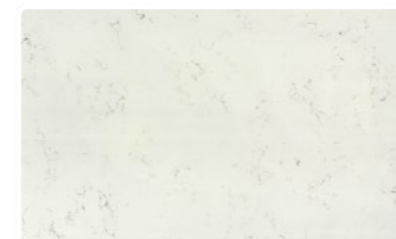
Silestone Halcyon



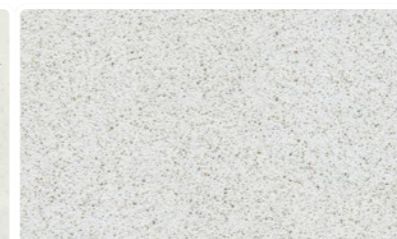
Silestone Ethereal Haze



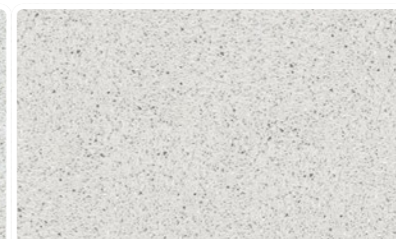
Silestone Nolita



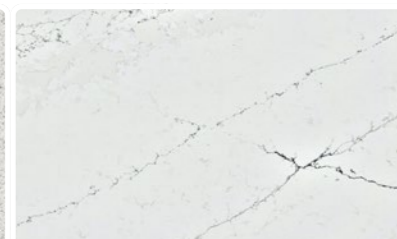
Silestone Ariel



Silestone Blanco Norte 14



Silestone Stellar Snow



Silestone Ethereal Noctis



Dekton Rem



Dekton Vigil



Silestone Helix



Dekton Neural



Silestone Pearl Jasmine



Silestone Lusso



Silestone Lyra



Dekton Aura 22



Dekton Opera



Dekton Entzo 22



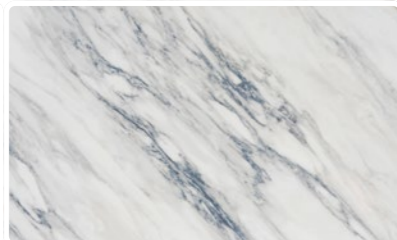
Dekton Daze



Silestone Et. D'or



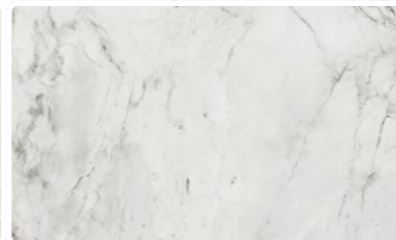
Dekton Awake



Dekton Trance



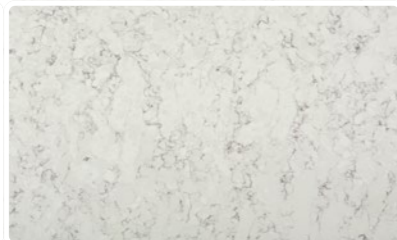
Dekton Helena 22



Dekton Bergen



Dekton Portum



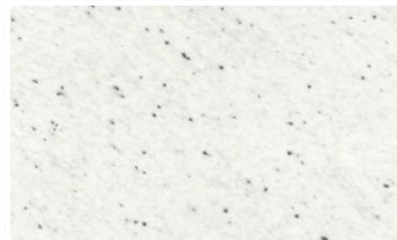
Silestone Blanco Orion



Dekton Tundra 22



Silestone Toscana Cream



Sensa Siberia



Sensa Blanco Gabrielle



Sensa Dakar



Dekton Nilium 22



Silestone Yukon



Dekton Lunar 22



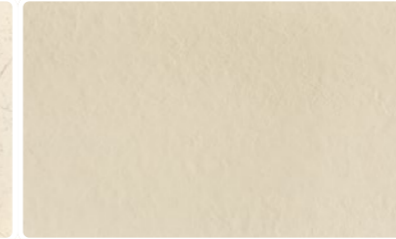
Dekton Albarium 22



Dekton Aeris



Silestone Eternal Marfil



Dekton Edora



Dekton Danae



Dekton Nacre



Dekton Sasea



Silestone Blanco City



Silestone Pietra



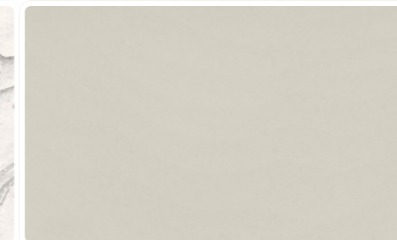
Silestone Desert Silver



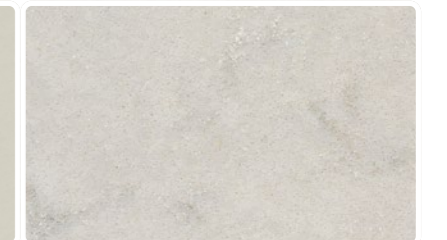
Sensa Siberia



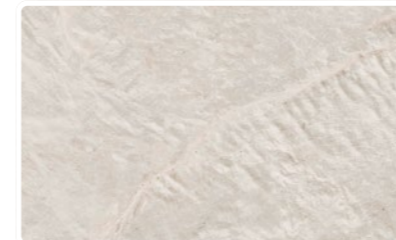
Dekton Liquid Sky 22



Silestone Faro White



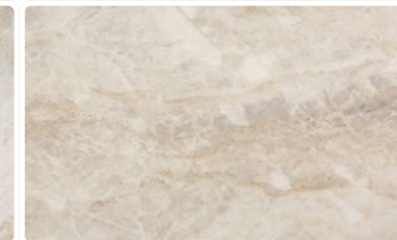
Silestone Lagoon



Dekton Liquid Shell 22



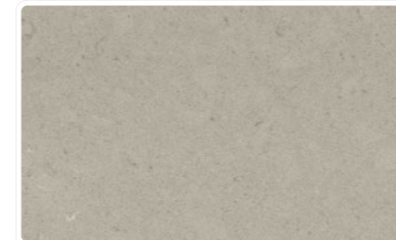
Sensa Taj Mahal



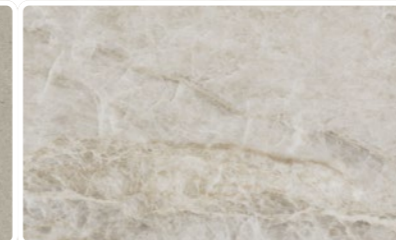
Dekton Arga



Silestone Royal Reef



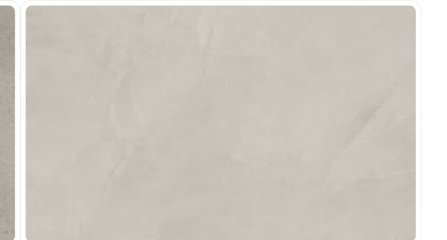
Silestone Royal Reef



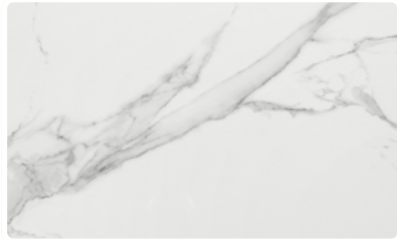
Dekton Taga



Sensa White Eggeo



Dekton Argentium



Dekton Natura 22



Dekton Olimpo



Dekton Lucid



Dekton Morpheus



Silestone Ocean Jasper



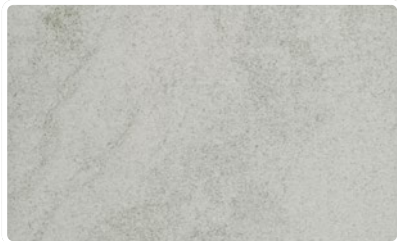
Dekton Khalo



Sensa White Macaúbas



Sensa Vancouver



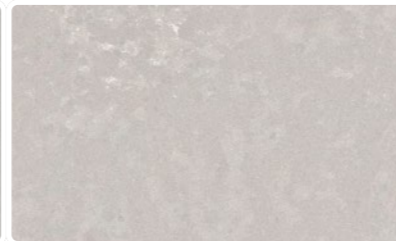
Dekton Kovik



Silestone Ethereal Cloud



Silestone Eternal Serena



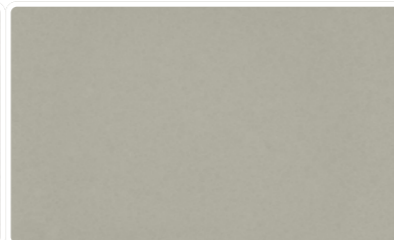
Silestone Poblenu



Dekton Keon



Silestone Camden



Silestone Cincel Grey



Silestone Alpina White



Sensa Silver Blue



Sensa Crema Pearl



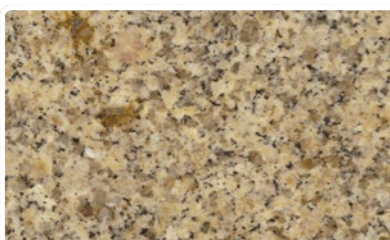
Sensa Caroline Summer



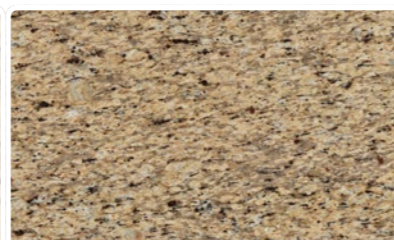
Sensa Brown Persa



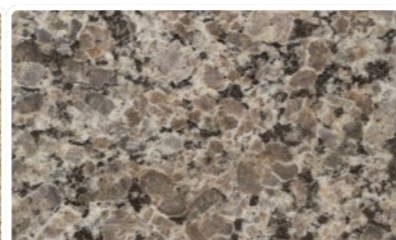
Sensa Santa Cecilia



Sensa Juparana Cathedral



Sensa Tanami



Sensa Caledonia



Sensa Crescent Veil



Silestone Sienna Ridge



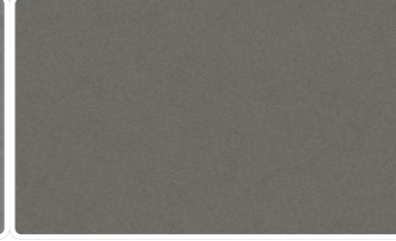
Silestone Kensho



Dekton Soke



Silestone Seaport



Silestone Gris Expo



Sensa Platino



Dekton Orix



Silestone Ocean Storm



Dekton Laos



Silestone Copper Mist



Dekton Kira



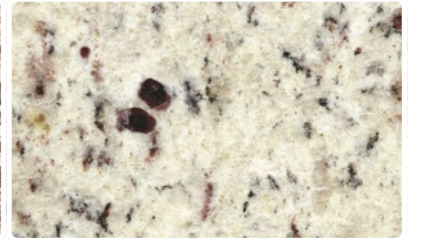
Silestone Cemento Spa



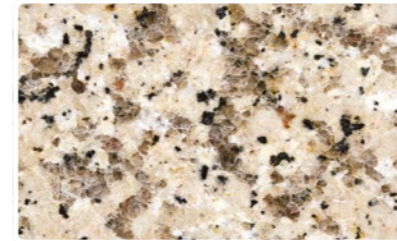
Silestone Marengo



Sensa Tangier



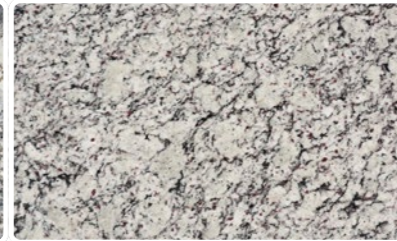
Sensa Blanco Leblon



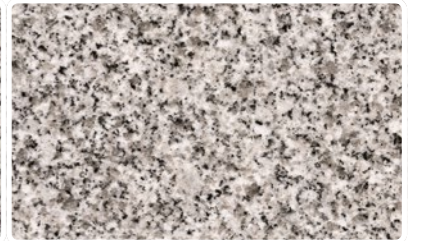
Sensa Iberian Sunset



Sensa Blue Jeans



Sensa Dawn Mist



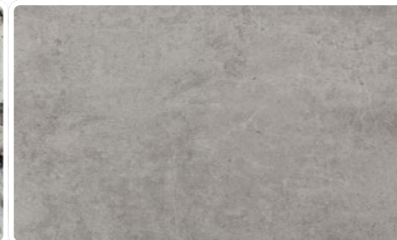
Sensa Majestic White



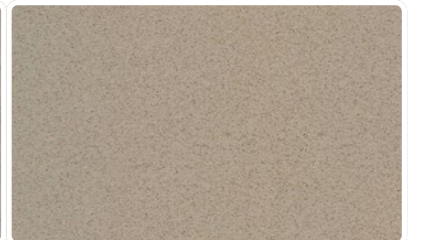
Sensa White Splendor



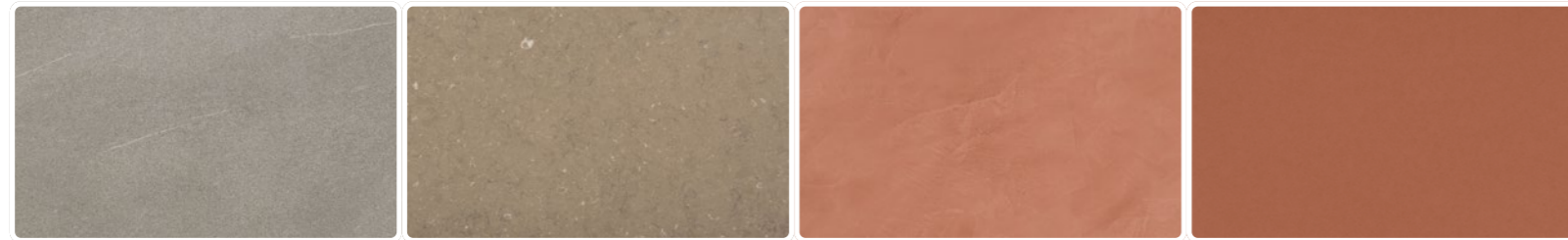
Sensa Delicatus Ice



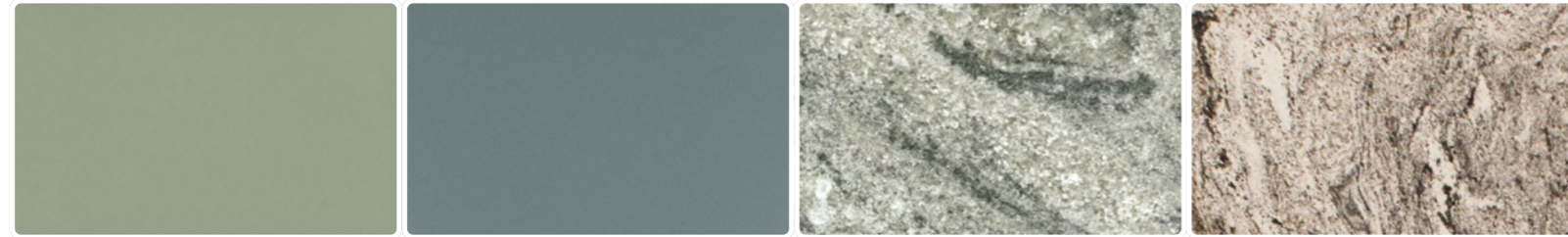
Dekton Kreta



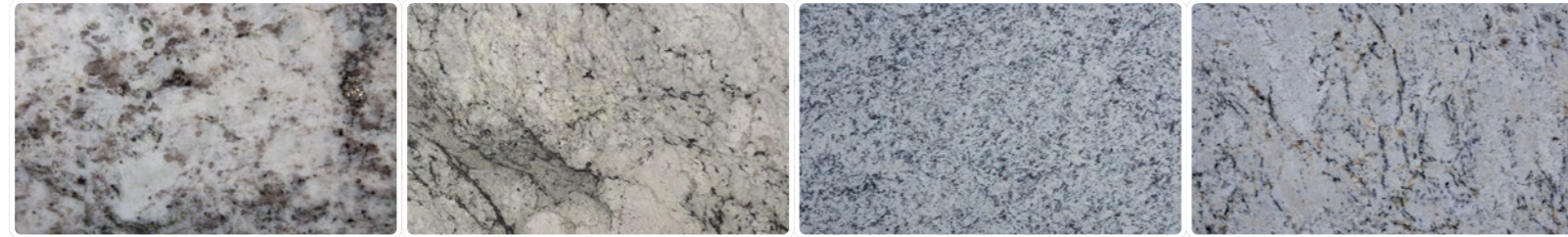
Silestone Lena



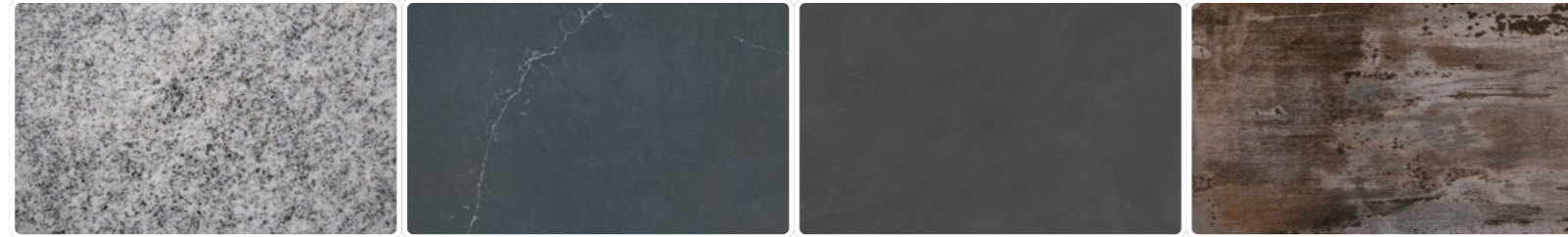
Dekton Sirocco Silestone Coral Clay Dekton Umber Silestone Arcilla Red



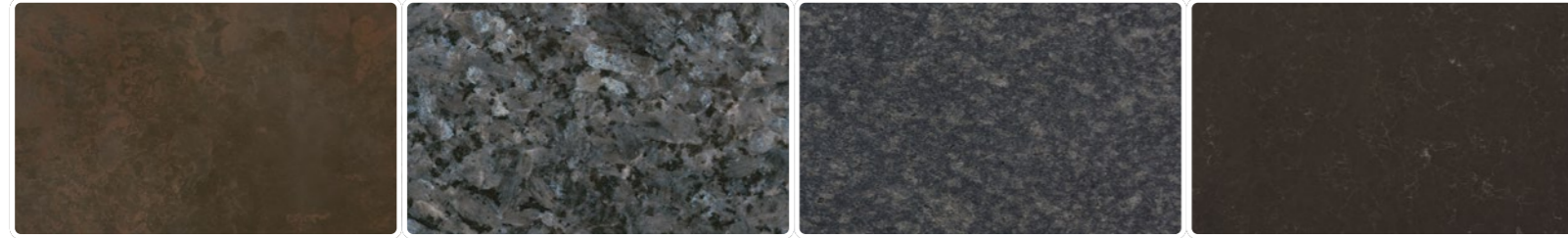
Silestone Posidonia Green Silestone Cala Blue Sensa Verde Aquarius Sensa Waterfall



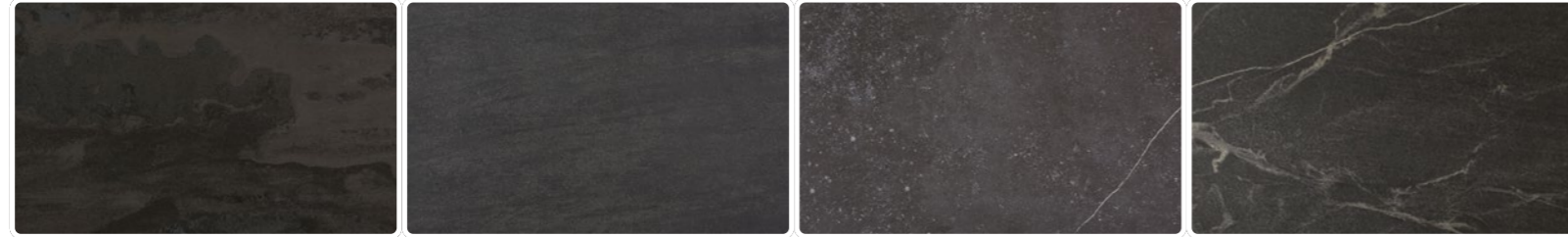
Sensa White Alamo Sensa White Lava Sensa White Napoli Sensa Snowfall



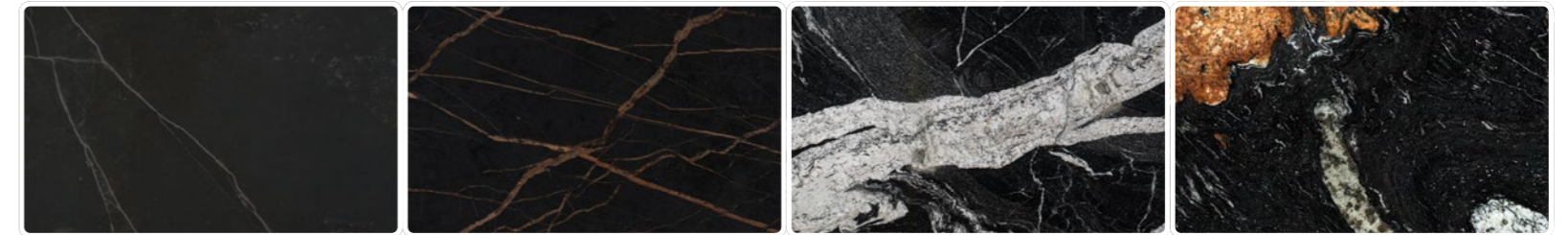
Sensa Smoky White Silestone Charcoal Soapstone Dekton Micron Dekton Trilium



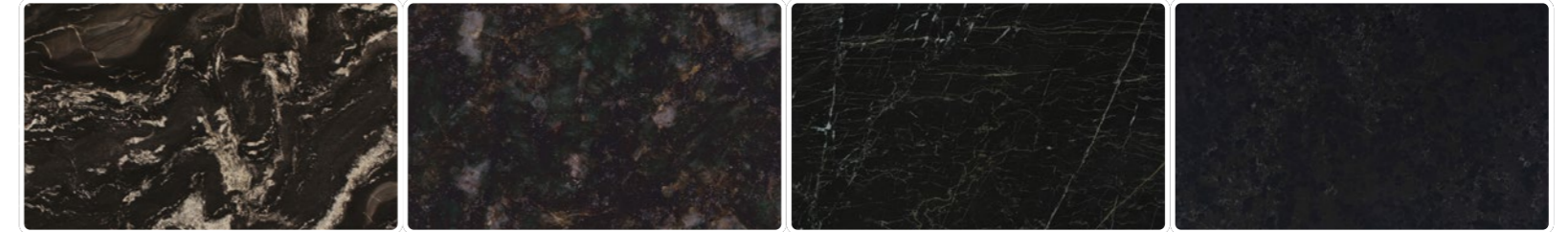
Dekton Keranium Sensa Blue Pearl Sensa Graphite Grey Silestone Calypso



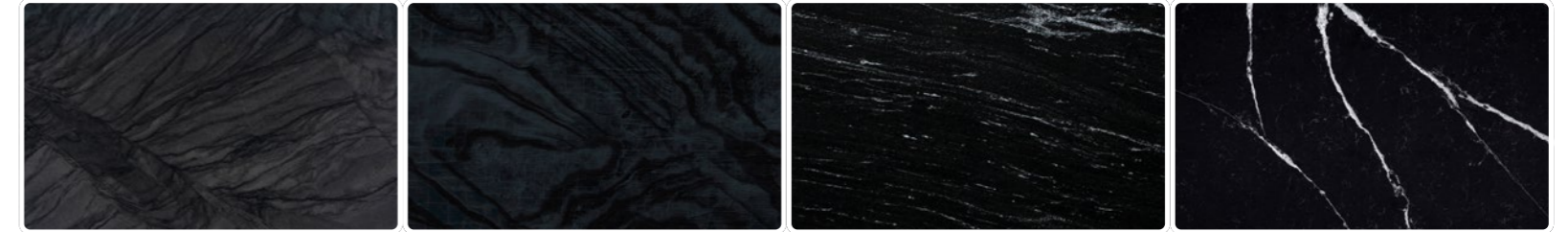
Dekton Radium Dekton Bromo Dekton Fossil Sensa Argenti Grey



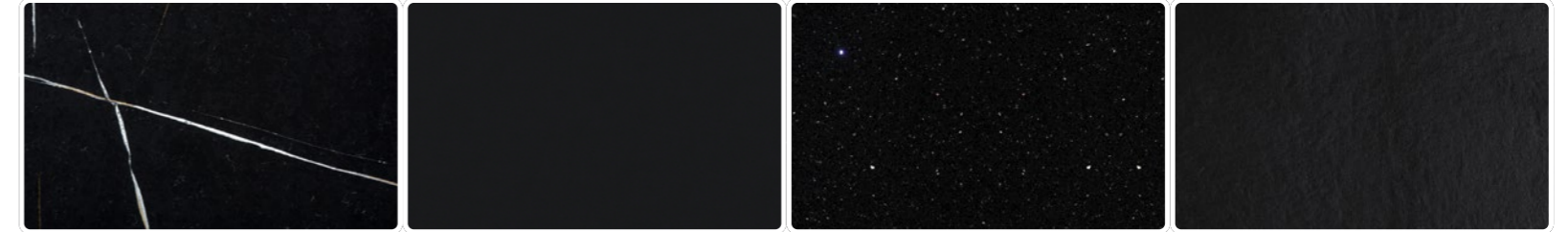
Dekton Kelya Dekton Laurent Sensa Maori Sensa Orinoco



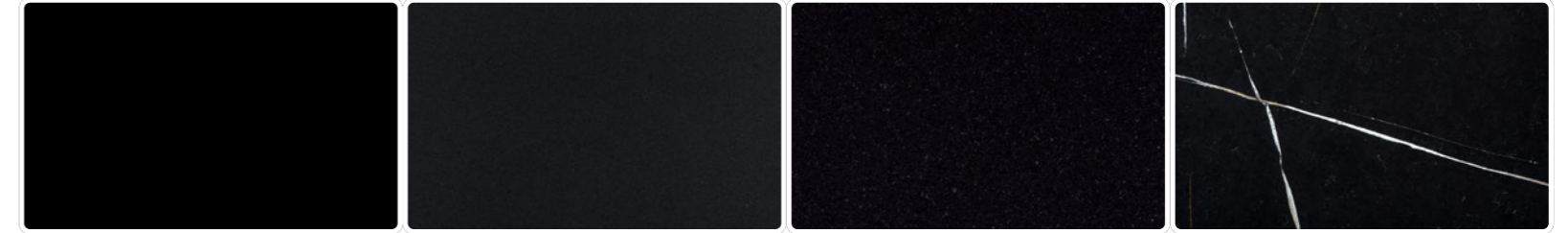
Sensa Amelia Ridge Sensa Ubatuba Dekton Somnia Silestone Corktown



Sensa Nilo Dekton Liquid Embers Sensa Via Lattea Silestone Eternal Marquina



Silestone Eternal Noir Silestone Tebas Black Silestone Stellar Night Dekton Sirius



Dekton Domoos Sensa Moak Black Sensa San Benedito Silestone Eternal Noir

DEKTON® Polished (X-Gloss) Matte (Ultra-Matte) Matte (Velvet) Textured (Ultra-Texture) Dekton® Slim 4 mm Quick Cut Technology Dekton® Grip/Grip+. Anti-slip solution for wet surfaces. * Color only available for shower trays

SILESTONE® Polished Matte (Suede) Integrity Technology HybriQ Technology HybriQ+ Technology

SENSA BY COSENTINO® Polished (Mirage) Matte (Leather) Textured (Caresse)

Quickship available Note: for CSA/IAPMO certificate, check included colors.

→ Countertop, cladding and Sinks Marie Top Silestone® Posidonia Green



→ Countertop, cladding and flooring: Silestone® Cala Blue / Sinks Marie Top Silestone® Blanco Zeus



Flooring & Cladding

Visual continuity throughout the space

The same surface is used to clad floors, walls and furniture. Thanks to its large format and almost zero thermal expansion coefficient, it can be installed with fewer, practically imperceptible joints.

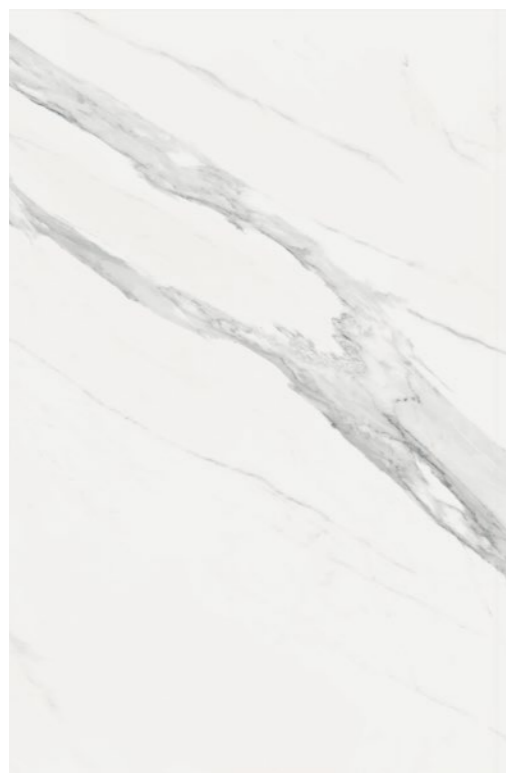


Design and patterns.

Three groups of patterns that make the design process easier.

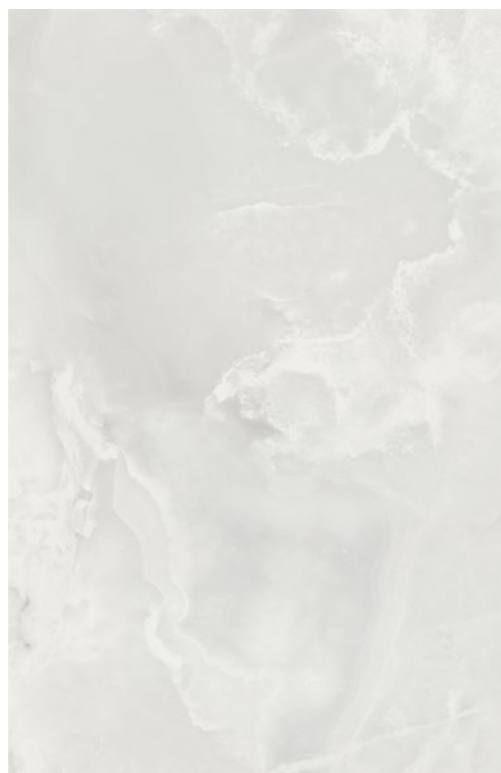
We have classified our Dekton® color range into three different clusters of patterns to facilitate the design process. All our portfolio is labelled as Infinite Pattern, Singular Pattern or Smooth Pattern, depending on the desired effect for large surfaces and the placement of slabs adjacent to one another, taking into account the orientation of the design, shades and variations.

However, this classification is merely indicative, and we recommend that you contact our Product department to obtain an individual assessment that guarantees how you can materialize your project the way you imagined.



Singular Pattern

Designs with color ranges of greater complexity and a very strong orientation, which result in patterns with a lot of character and variation in smaller cuts or continuous layouts.



Smooth Pattern

Designs with an orientation in the graphic structure that has to be taken into account when cutting and placing the slabs. It is a very versatile type of pattern that requires consideration of orientation in its installation.



Infinite Pattern

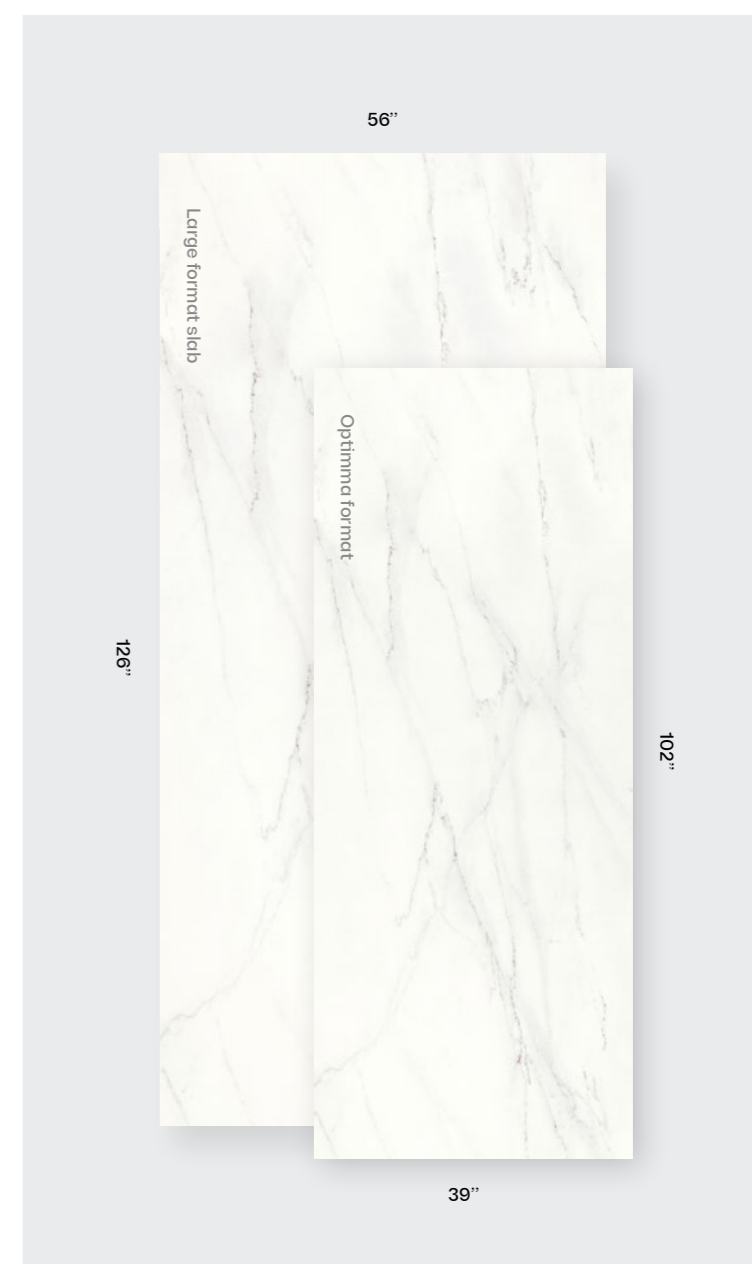
Uniform colors or designs with a consistent or almost consistent composition and structure that, when used for cladding such as floors, walls or façades, allow for random placement of slabs, providing a beautifully consistent look.

Optimma format

A Dekton® format optimized for maximum efficiency in the most common applications.

Our Dekton® slabs have been optimized for the most common applications to create a new format with improved cost, design, installation and handling.

102" x 39" in 0.4 cm thickness.



Rotating Pattern

All colors have a rotating pattern, except Rem and Kelya, these have a static pattern.

With rotating pattern the graph is printed with a slight vertical displacement upwards (scroll up) in each one of its iterations (in each slab).

In the static pattern the graph is always printed in the same position, but there is the option that, when position the slabs next to each other horizontally, the one immediately after it rotates 180° with respect to the above, as shown in the following illustration, in order to play with the movement in the design.



Dekton® Bookmatch

Bookmatch

Based on some of our designs, we have created unique, symmetrical and interchangeable references that allow compositions and designs to be made where the veins have continuity between different pieces.

Each piece has a unique combination of numbers and letters to select the patterns that best suit your needs according to color and available thicknesses.

Material on request, check availability.

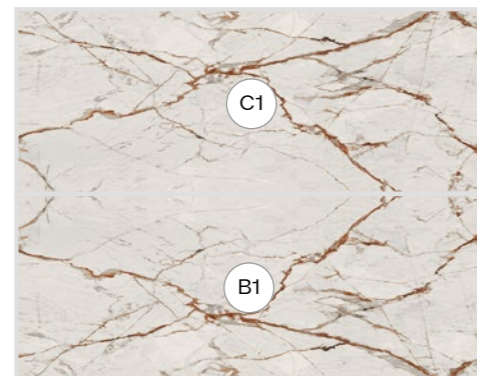
Dekton® Slim Aura 15
Available in 0.4, 0.8, 1.2 and 2 cm thicknesses



Dekton® Natura 22
Available in 0.4, 0.8, 1.2 and 2 cm thicknesses



Dekton® Awake
Available in 0.4, 0.8 and 1.2 cm thicknesses



Dekton® Lucid and Morpheus
Available in 0.8 and 1.2 cm and Optimma format

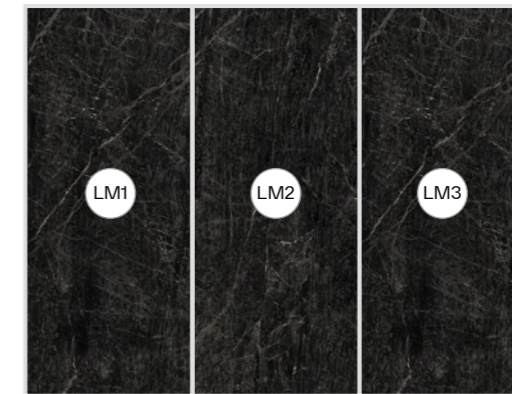


Dekton® Lineal Match & Book Match

Lineal Match

We present a new concept that includes references of the same color to create a fluid and continuous atmosphere. Focused on large-area flooring and vertical cladding applications.

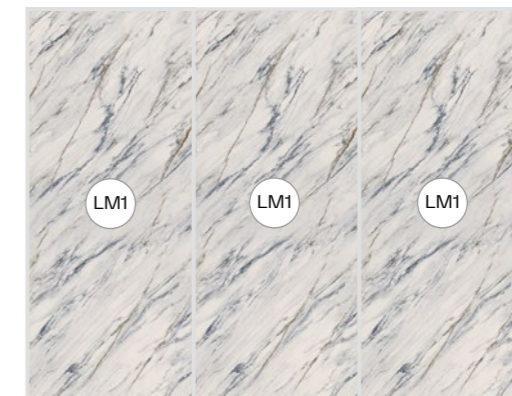
Dekton® Somnia
Available in 0.4, 0.8, 1.2 cm and Optimma format



Design Match

A new design conceived to position the slabs vertically. The slab is rotated 180° in each of its iterations, thus creating a continuous and harmonious design.

Dekton® Trance
Available in 0.4, 0.8 and 1.2 cm thicknesses





Dekton® Grip & Grip+

Improved grip for any anti-slip application such as bathrooms, swimming pools or outdoor floors.

Each space has different technical needs. Introducing to the market a new portfolio for antislip flooring in two finishes Grip and Grip+

Grip, the anti-slip finish that is easy to clean and ideal for light colors.

Grip+, the maximum grip for the most demanding applications and maximum ease of cleaning.

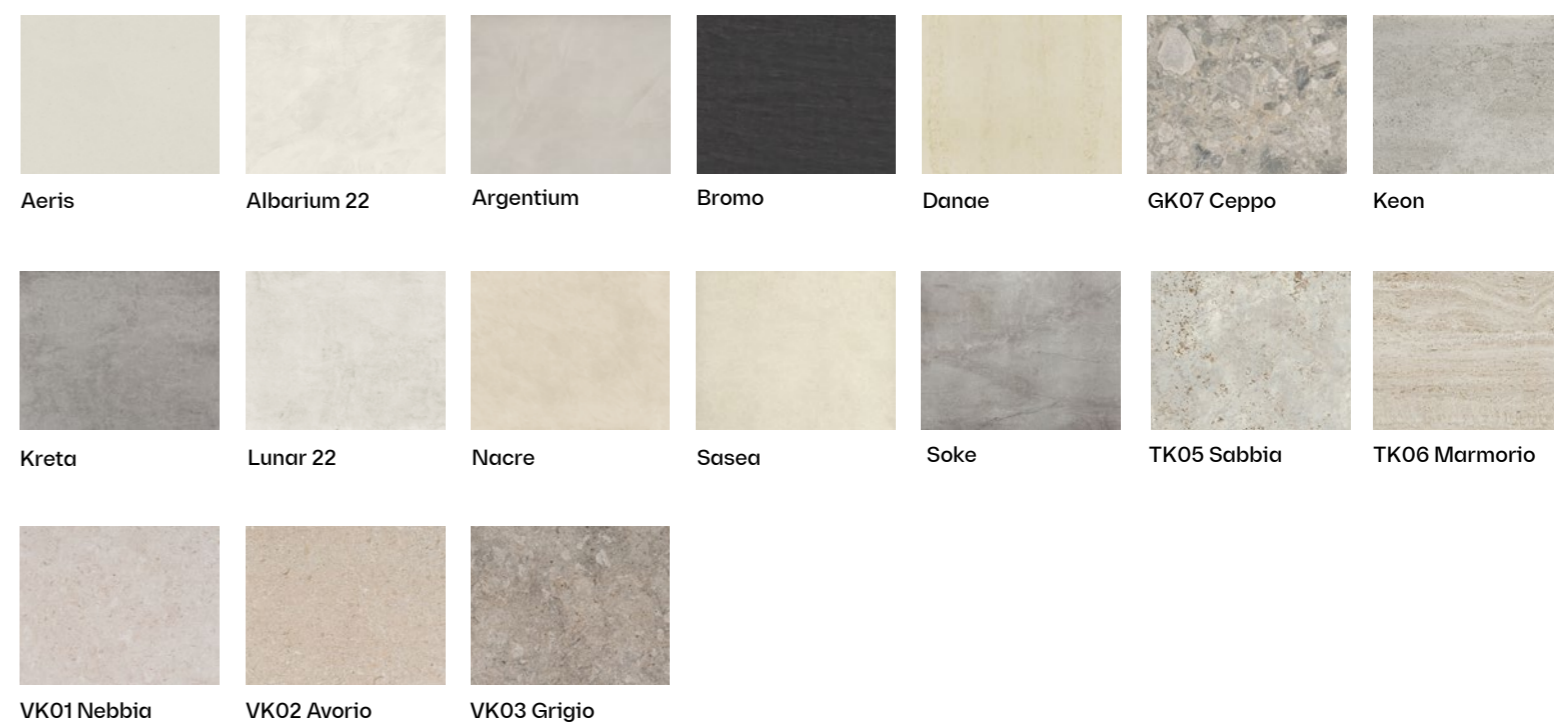
Two highly durable and resistant anti-slip treatments, applied in a controlled manner during the manufacturing process of Dekton®, without the need for chemical or mechanical means.

Colors with the anti-slip finish may have slight color differences compared to the standard matte finish, which are more evident in colors such as Sasea or Danae.

Dekton® Grip colors



Dekton® Grip+ colors



Sinks & Shower trays

Durability and beauty in timeless features that can fit any space or become an iconic part of the bathroom.

Sinks, countertops and shower trays designed with the most cutting-edge materials developed by Cosentino®. Maximum durability guaranteed in the main features of the bathroom with an upmarket and timeless design that suits any space, bringing unique bathrooms to life.

Bathroom features that give a personal touch with simplicity, elegance and sophistication to any decorative style.



Sinks and countertops

Versatile and
durable designs.

Countertops and sinks to suit any space with a wide variety of designs in which geometric balance and sobriety predominate. The durability of a timeless aesthetic and the hardness and resistance offered by Cosentino®'s latest generation materials: Silestone® and Dekton®.




5
YEAR
COSENTINO
WARRANTY

Bathroom Sinks

Full product range

Designer sinks and countertops suitable for any space.

 Quickship. Check color and size availability



Evita 
Silestone® Integrity P. 204



Simplicity
Silestone® · Dekton® P. 214



Reflection
Silestone® · Dekton® P. 216



Marie
Silestone® Integrity P. 206



Elegance
Silestone® P. 208



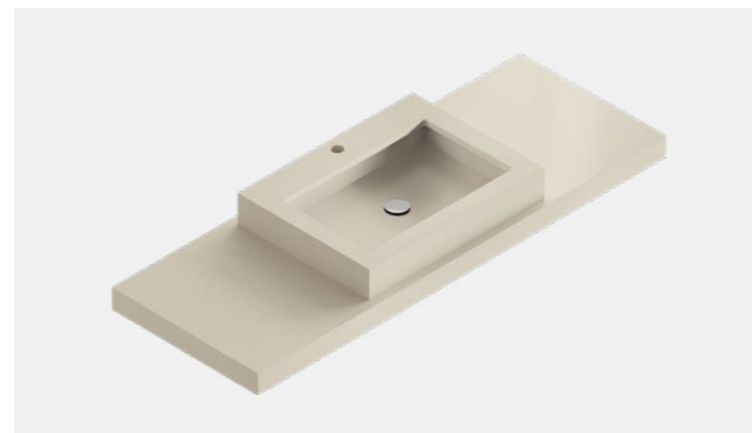
Silence
Silestone® · Dekton® P. 218



HLine Flex
Silestone® · Dekton® P. 220



Armony
Silestone® P. 210



Symmetry
Silestone® P. 212



HLine Urban
Silestone® · Dekton® P. 222




HLine Bath Top
Silestone® · Dekton® P. 224

Evita

Integrity



Three sizes of Evita sinks with a round and functional design, which combine technology and integration, offering comfort for the most demanding solutions.

 Quickship . Check color and size availability



Evita S



Evita L



Evita Q

Characteristics

1. Moulded sink featuring Integrity® technology, without joints, with reduced height and rounded wall corners.
2. Optional overflow.
3. Additional sinks can be supplied and fitted.
4. Custom options for countertop as: towel rails, cut outs, side legs (non structural), skirt heights, etc.
5. Click-clack valve included.
6. Support bars included (for countertops with skirt).

Tap

With or without drill holes for taps

Overflow

With or without overflow

Integrated sink

Standard S: 19 2/3" x 11 4/5" x 4"
Standard L: 25 3/5" x 11 4/5" x 4"
Standard Q: 20" x 11 4/5" x 4"

Edging

12 mm straight edge
Skirt: 5"

Countertop

Length 23 5/8" up to 126" *
Width 15 3/4" up to 24"

* Jumbo slab only. For the maximum length, continuity of veins in the side skirts is not possible.

Available colors

Available in a selected range of Silestone® 12 mm colors polished. Please scan the below QR code to check the latest portfolio of Silestone® Integrity colors.



Marie

Integrity



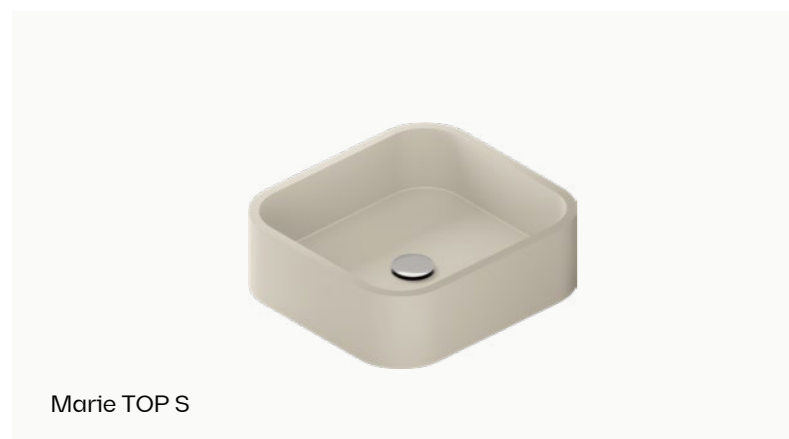
The Marie sink is available in two different formats, on top of or integrated into the countertop, and two different sizes. Their soft corners and wide variety of finishes are perfect for all bathroom styles.



Marie S



Marie L



Marie TOP S



Marie TOP L

Characteristics

1. Moulded sink featuring Integrity technology, without joints, with reduced height and rounded wall corners.
2. TOP countertop sinks models in exclusive matt finish.
3. Additional sinks can be supplied and fitted.
4. Custom options for countertop as: towel rails, cut outs, side legs (non structural), skirt heights, etc.
5. Click-clack valve included.
6. Support bars included (for countertops with skirt).

Tap

With or without drill holes for taps

Integrated sink

Standard S: 13 2/5" x 14 4/7" x 3"
Standard L: 20" x 14 4/7" x 3"

TOP sink

Standard S: 14" x 14 4/7" x 4"
Standard L: 20" x 14 4/7" x 4"

Edging

20 mm straight edge
Skirt: 5" (integrated) / 4" (TOP)

Countertop

Length 18 1/2" up to 126" *
Width 17 1/3" up to 24"

* Jumbo slab only. For the maximum length, continuity of veins in the side skirts is not possible.

Available colors

Available in a selected range of Silestone® 20 mm colors Polished or Suede (TOP version in Matt). Please scan the below QR code to check the latest portfolio of Silestone® Integrity colors.



Elegance



Elegance is our well known sink made of cut-to-size pieces. Customize your sink to get that elegant uniform design you are looking for.



Characteristics

1. Traditional rectangular sink featuring a functional design.
2. Optional overflow.
3. Additional sinks can be supplied and fitted.
4. Custom options for countertop as: towel rails, cut outs, side legs (non structural), skirt heights, etc.
5. Click-clack valve included.
6. Support bars included (for countertops with skirt).

Tap

With or without drill holes for taps

Overflow

With or without overflow

Integrated sink

Standard: 19 2/7" x 11 4/5" x 4"
Other sizes available for +20 pcs

Edging

20 mm straight edge
Skirt: 5"

Countertop

Length 23 2/9" up to 126" *
Width 15 3/4" up to 24"

* Jumbo slab only. For the maximum length, continuity of veins in the side skirts is not possible.

Available colors

Available in all Silestone® 20 mm colors, polished or suede. Please scan the below QR code to check the latest portfolio of Silestone® colors



Armony



The evolution of tradition turns this sink into the ideal touch for a distinctive bathroom, providing the harmony that the room needs.



Characteristics

1. Removable ramp for easy cleaning.
2. Additional sinks can be supplied and fitted.
3. Custom options for countertop as: towel rails, cut outs, side legs (non structural), skirt heights, etc.
4. Suction cup to lift the ramp included.
5. Grid sink plug valve included (cannot be closed).
6. Support bars included (for countertops with skirt).

Tap

With or without drill holes for taps

Integrated sink

Standard: 19 2/7" x 11 4/5" x 4"
Other sizes available for +20 pcs

Edging

20 mm straight edge
Skirt: 6 2/7"

Countertop

Length 23 2/9" up to 126" *
Width 15 3/4" up to 24"

* Jumbo slab only. For the maximum length, continuity of veins in the side skirts is not possible.

Available colors

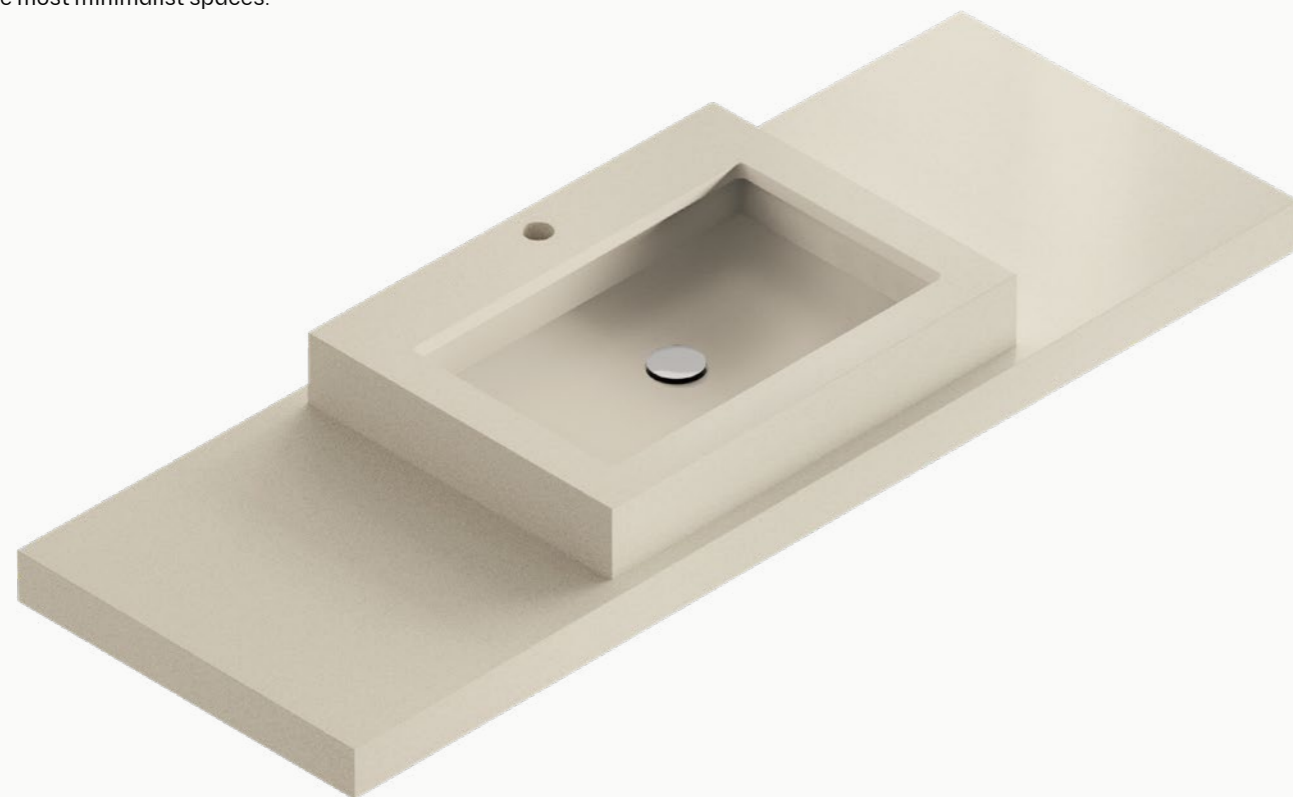
Available in all Silestone® 20 mm colors, polished or suede. Please scan the below QR code to check the latest portfolio of Silestone® colors



Symmetry



Innovative sink design with straight lines and reduced height, available in three different sizes, to provide the ideal solution for the most minimalist spaces.



Characteristics

1. Countertop sink suitable for countertops made of any material.
2. Three sizes of sinks to suit every need and every bathroom space.
3. Custom options for countertop as: towel rails, cut outs, side legs (non structural), skirt heights, etc.
4. Click-clack valve included.
5. Support bars included (for countertops with skirt).

Tap

With or without drill holes for taps

Under countertop sink

Standard S: 13" x 9" x 2 3/4"
(O.D. 17 5/7" x 15")

Standard M: 15" x 9 5/6" x 2 3/4"
(O.D. 19 2/3" x 15 3/4")

Standard L: 22 5/6" x 11 4/5" x 2 3/4"
(O.D. 27 5/9" x 17 5/7")

Other sizes available for +20 pcs

Edging

20 mm straight edge / Skirt: 4"

Countertop

Length 21 2/3" up to 126" *
Width 17" up to 24"

* Jumbo slab only. For the maximum length, continuity of veins in the side skirts is not possible.

Available colors

Available in all Silestone® 20 mm colors, polished or suede. Please scan the below QR code to check the latest portfolio of Silestone® colors



Simplicity



A sink with a minimalist but practical design. Its modern and elegant lines make it a simple but smart choice for your bathroom.



Characteristics

1. Removable cover for easy cleaning.
2. Fixed ramp with splash-proof slope.
3. Additional sinks can be supplied and fitted.
4. Custom options for countertop as: towel rails, cut outs, side legs (non structural), skirt heights, etc.
5. Suction cup to lift the cover included.
6. Grid sink plug valve included (cannot be closed).
7. Support bars included (for countertops with skirt).

Tap

With or without drill holes for taps

Under countertop sink

Standard: 19 2/7" 11 4/5" x 4"
Other sizes available for +20 pcs

Edging

20 mm straight edge for Silestone®
12 mm straight edge for Dekton®
Skirt: 6 2/7"

Countertop

Length 23 2/9" up to 126" *
Width 15 3/4" up to 24"

* Jumbo slab only for Silestone®. For the maximum length, continuity of veins in the side skirts is not possible.

Available colors

Available in all Silestone® 20 mm colors, polished or suede and Dekton® 12 mm colors. Please scan the below QR code to check the latest portfolio of Silestone® and Dekton® colors



Reflection



Innovative and versatile sink, with double drainage. Its innovative design, featuring straight lines, and its range of sizes provide the bespoke solution to adapt your style in the bathroom



Characteristics

1. Removable cover for easy cleaning.
2. Double drainage slope, perfect for two taps.
3. Additional sinks can be supplied and fitted.
4. Custom options for countertop as: towel rails, cut outs, side legs (non structural), skirt heights, etc.
5. Suction cup to lift the cover included.
6. Grid sink plug valve included (cannot be closed).
7. Support bars included (for countertops with skirt).

Tap

With or without drill holes for taps

Integrated sink

Standard S: 19 2/7" x 11 4/5" x 3 1/7"
 Standard M: 35 3/7" x 11 4/5" x 3 1/7"
 Standard L: 47 1/4" x 11 4/5" x 3 1/7"
 Other sizes available for +20 pcs

Edging

20 cm straight edge for Silestone®
 12 mm straight edge for Dekton®
 Skirt: 5" or 6 2/7"

Countertop

Length 23 2/9" up to 126" *
 Width 15 3/4" up to 24"

* Jumbo slab only for Silestone®. For the maximum length, continuity of veins in the side skirts is not possible.

Available colors

Available in all Silestone® 20 mm colors, polished or suede and Dekton® 12 mm colors. Please scan the below QR code to check the latest portfolio of Silestone® and Dekton® colors



Silence



Sink with a design that provides both the warmth and tranquility that the most relaxing bathroom seeks. A silent waterfall for ultimate well-being.



Characteristics

1. Linear drainage (not accessible for cleaning)
2. Almost imperceptible drainage slope.
3. Additional sinks can be supplied and fitted.
4. Custom options for countertop as: towel rails, cut outs, side legs (non structural), skirt heights, etc.
5. Grid sink plug valve included (cannot be closed).
6. Support bars included (for countertops with skirt).
7. Possibility of bespoke sink solutions for +20 pcs.

Tap

With or without drill holes for taps

Integrated sink

Standard S: 19 2/7" x 11 4/5" x 3 1/7"
 Standard M: 35 3/7" x 11 4/5" x 3 1/7"
 Standard L: 47 1/4" x 11 4/5" x 3 1/7"
 Other sizes available for +20 pcs

Edging

20 mm straight edge for Silestone®
 12 mm straight edge for Dekton®
 Skirt: 5" or 6 2/7"

Countertop

Length 23 2/9" up to 126" *
 Width 15 3/4" up to 24"

* Jumbo slab only for Silestone®. For the maximum length, continuity of veins in the side skirts is not possible.

Available colors

Available in all Silestone® 20 mm colors, polished or suede and Dekton® 12 mm colors. Please scan the below QR code to check the latest portfolio of Silestone® and Dekton® colors



HLine Flex

DEKTON® silestone®

The perfect combination between a Silestone® or Dekton® countertop and an under counter ceramic sink, providing full functionality and ease of cleaning for your project.



Characteristics

1. Sanitary porcelain sink.
2. Concealed overflow.
3. Additional sinks can be supplied and fitted.
4. Custom options for countertop as: towel rails, cut outs, side legs (non structural), skirt heights, etc.
5. Click-clack valve included.
6. Support bars included (for countertops with skirt).

Tap

With or without drill holes for taps

Overflow

With overflow

Under countertop ceramic sink

Standard: 17" x 12 1/5" x 4"

Edging

12 mm straight edge
Silestone® / Dekton®
Skirt: 8 1/4"

Countertop

Length 17 5/7" up to 126" *
Width 18 1/9" up to 24"

* Jumbo slab only for Silestone®. For the maximum length, continuity of veins in the side skirts is not possible.

Available colors

Available in all Silestone® 12 mm colors, polished or suede and Dekton® 12 mm colors. Please scan the below QR code to check the latest portfolio of Silestone® and Dekton® colors



HLine Urban

DEKTON® silestone®

A combination of Silestone® or Dekton® countertop and ceramic countertop sink, featuring a modern design and suitable for all needs.



Characteristics

1. Sink made of porcelain.
2. Modern rounded design.
3. Without overflow and tap ledge.
4. Possibility of adding more sinks and decide the positioning
5. Custom options for countertop as: towel rails, cut outs, side legs (non structural), skirt heights, etc.
6. Click clack valve included
7. Includes supports bars for countertops with skirts

Tap

With or without drill holes for taps

Cubeta cerámica top

Standard: Ø17 5/7" x 4"

Edging

12 mm straight edge
for Silestone® and Dekton®
Skirt: 4"

Countertop

Length 17 5/7" up to 126" *
Width 18 1/9" up to 24"

* Jumbo slab only for Silestone®. For the maximum length, continuity of veins in the side skirts is not possible.

Available colors

Available in all Silestone® 12 mm colors, polished or suede and Dekton® 12 mm colors. Please scan the below QR code to check the latest portfolio of Silestone® and Dekton® colors



HLine Bath Top

DEKTON® silestone®

A new concept designed for shelves or countertops in the bathroom. A solution that will add a sophisticated touch to this special space of your home.



Characteristics

1. Fully customisable: tap or drain drill holes for countertop sinks, rough or polished cut-outs for recessed or under counter sinks, etc.
2. Suitable for use with sinks made of any material.
3. Elements can be placed individually.
4. Custom options for countertop as: towel rails, cut outs, side legs (non structural), skirt heights, etc.
5. Support bars included (for countertops with skirt).

Drill holes

With or without drill holes

Edging

12 mm straight edge for Silestone® and Dekton®
Skirt: 2 1/3", 4" or 8 1/4"

Countertop

Length up to 126" *
Width up to 24"

* Jumbo slab only for Silestone®. For the maximum length, continuity of veins in the side skirts is not possible.

Available colors

Available in all Silestone® 12 mm colors, polished or suede and Dekton® 12 mm colors. Please scan the below QR code to check the latest portfolio of Silestone® and Dekton® colors



Shower trays

Designs that perfectly fit the space.

Manufactured in non-slip finishes such as Dekton® Grip, Grip+ and sandblasted Silestone®, our portfolio of shower trays achieves visual consistency throughout the space by integrating all the different features. A single surface for all applications, resulting in an atmosphere full of aesthetic harmony, balance and spaciousness.




5
YEAR
COSENTINO
WARRANTY

Shower trays

Full product range

Five models of customizable shower trays in a wide range of colors and finishes, which adapt to any space and technical requirement, no matter how complicated it may seem.

 Quickship. Check color and size availability



Exelis
Silestone®

P. 234



Kador Suite
Silestone®


P. 236



Rainfloor 
Dekton®

P. 230



Gocce 
Dekton®

P. 232



Wakka
Silestone®

P. 238




Wakka Brim
Silestone®

P. 240

Rainfloor

DEKTON®

Solution according to the different design trends in the shower area. Combine Dekton® with any evacuation system available on the market: grilles in steel, ABS or covered with Dekton® itself. An elegant and quality product to give a touch of distinction to the bathroom.

 Quickship . Check color and size availability



Characteristics

1. Customizable premium shower trays
2. Versatile solution integrated with the rest of the finishes.
3. Easy access shower with a flush entry.
4. With the best textured finishes Dekton® Grip/Grip+.
5. Suitable for a wide variety of drainage systems.
6. 5-year warranty for anti-slip treatments
7. Easy on-site installation.
8. Possibility to send the pieces already cut or to cut them on site.

Dimensions

Standard cladding format
56" x 56"
56" x 28"

Made to measure

Recommended thickness

8 mm

Surface

Dekton® Grip anti-slip finish (Class B, DIN 51097) and Grip + (Class C, DIN 51097).

Available colors


Available in all Dekton® 8 and 12 mm colors. Please scan the below QR code to check the latest portfolio of Dekton® Grip/Grip+ colors



Gocce



The new generation of shower trays is here. A highly stylised design, with gentle slopes and a pleasant and delicate non-slip texture for your feet.

 Quickship . Check color and size availability



Characteristics

1. Extra-flat (28 mm) and ultra light (25 kg/m²) tray.
2. Anti-slip treatment on the material.
3. Available in various standard formats and colors.
4. Possibility of straight cuts on-site for easy adaptation.
5. Installation flush with the floor or above.
6. Shower drain valve with chromed grate included

Valve

Centred

Dimensions

36" x 48"
32" x 60"

* Customised product subject to certain fixed maximum and minimum measurements.

Perimeter area

Flat surface with no slope for optimum positioning of the shower screen

Edge

28 mm straight polished edge in Dekton®

Surface

Dekton® Grip/Grip+ anti-slip finish (Class B, DIN 51097)

Available colors

Aeris, Kreta and Rem.



Exelis



A simple but robust design, with a fourway drainage system suitable for any need. Its textured finish gives the shower tray the highest anti-slip properties.



Characteristics

1. Flat perimeter with elegant round corners.
2. Four-way drainage system suitable for any need.
3. Possibility to change the position of the valve where needed (depending on the dimension of the tray).
4. Optional cut-outs to suit space available on request.
5. Optional side slot for shower screen installation.
6. Installation flush with the floor or on top.
7. Valve with siphon and stainless steel shower drain included.

Valve

Custom position of the valve

Perimeter area

4 cm flat surface for optimum positioning of the shower screen

Dimensions*

Length from 27 5/9" to 126" *
Width from 27 5/9" to 59" *

*Jumbo slab only. N-Boost treatment is not applied to sandblasted areas.

Edging

30 mm straight polished

Surface

Sandblasted anti-slip finish all over (Class B, DIN 51097)

Available colors

Available in all Silestone® 30 mm colors, polished. Please scan the below QR code to check the latest portfolio of Silestone® colors



Shower trays



Kador Suite



Its perimeter frame design, fully formed, ensures perfect leak tightness during showering. drainage slope to a full width linear water collection area.



Characteristics

1. Standard perimeter frame 5 cm high and 2 cm wide, which can be extended to 3, 4 or 5 cm wide.
2. Extra cover for the drainage area available.
3. Soft sandblasted strips for easy cleaning.
4. Optional cut-outs to suit space available on request.
5. Optional side slot for shower screen installation.
6. Installation flush with the floor or on top.
7. Valve with siphon and stainless steel shower drain included.

Valve

Custom positioning

Perimeter frame

2 cm flat surface for optimum positioning of the shower screen

Dimensions

Length from 27 5/9" to 78 3/4"
Width from 27 5/9" to 59" *

*Jumbo slab only. N-Boost treatment is not applied to sandblasted areas.

Edging

50 mm straight polished

Surface

Sandblasted strips (Class B DIN 51097)

Available colors

Available in all Silestone® 20 mm colors, polished or suede. Please scan the below QR code to check the latest portfolio of Silestone® colors



Wakka



Made in one piece, without vertical joints. Its single slope makes it functional and easy to fit into the bathroom floor, providing a simple, practical and elegant design.



Characteristics

1. Made in one piece, with no additional material that would require vertical joints.
2. Designed for integration and continuity with the surrounding elements.
3. Soft sandblasted strips for easy cleaning.
4. Optional cut-outs to suit space available on request.
5. Installation flush with the floor (recessed).
6. Valve with siphon and stainless steel grid included.

Valve

Centered in one of the short side of the piece

Side frames

1.5 cm flat surface for optimum positioning of the shower screen

Dimensions

Length from 27 5/9" to 98 3/7"
Width from 27 5/9" to 59" *

*Jumbo slab only. N-Boost treatment is not applied to sandblasted areas.

Edging

Decreasing edge from 30 to 5 mm

Surface

Sandblasted strips (Class B DIN 51097)

Available colors

Available in all Silestone® 30 mm colors, polished or suede. Please scan the below QR code to check the latest portfolio of Silestone® colors



Wakka Brim



An eye-catching tray, with a sophisticated and technological look suitable for all uses. Choose a Wakka tray with two additional side frames, without vertical joints.



Characteristics

1. Tray with two side frames, with a subtle chamfer towards the interior to facilitate water collection.
2. Disruptive and innovative design compared to traditional shower trays.
3. Extra cover for the drainage area available.
4. Soft sandblasted strips for easy cleaning.
5. Optional cut-outs to suit space available on request.
6. Installation flush with the floor or on top.
7. Valve with siphon and stainless steel shower drain included.

Valve

Centered in one of the short side of the piece

Side frames

2.5 cm flat surface for optimum positioning of the shower screen

Dimensions

Length from 27 5/9" to 98 3/7"
Width from 27 5/9" to 59" *

*Jumbo slab only. N-Boost treatment is not applied to sandblasted areas.

Edging

30 mm straight polished

Surface

Sandblasted strips (Class B, DIN 51097)

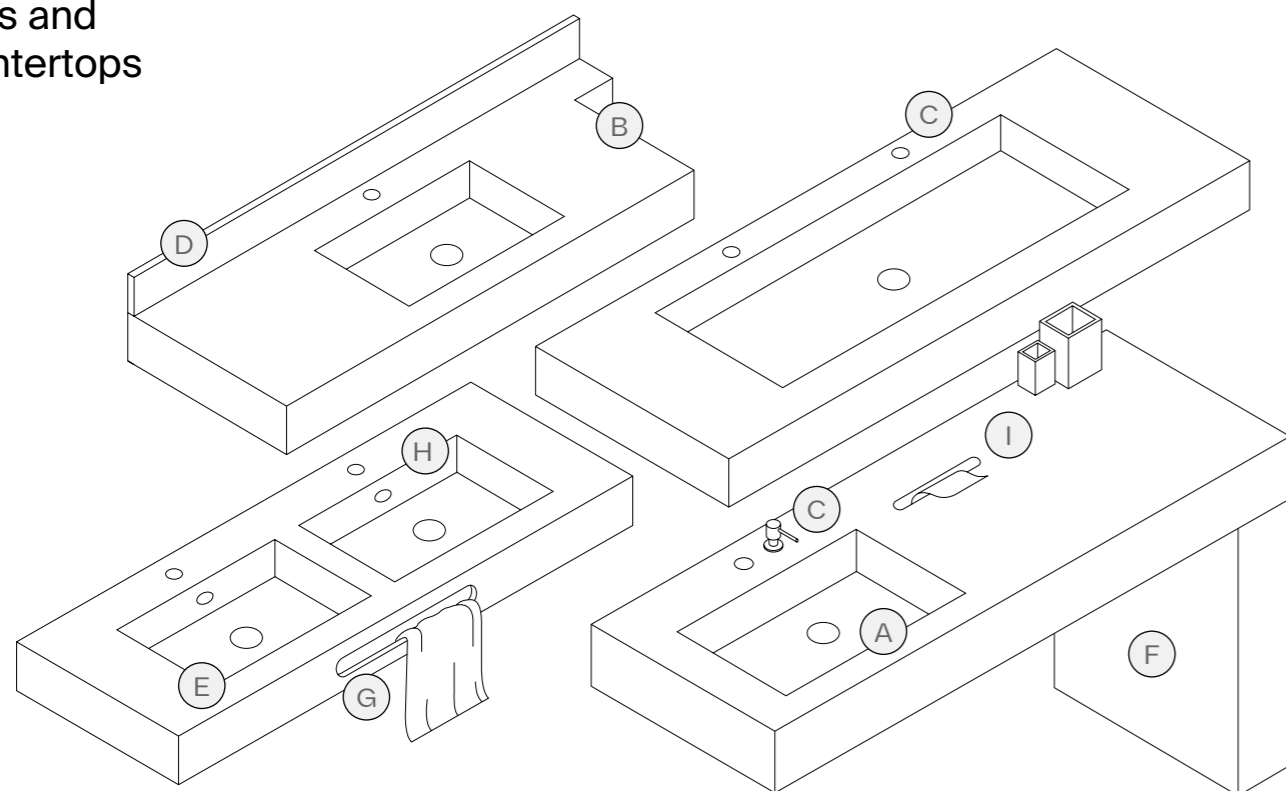
Available colors

Available in all Silestone® 30 mm colors, polished or suede. Please scan the below QR code to check the latest portfolio of Silestone® colors



Custom design operations

Sinks and countertops



- A. Change in sink position.
- B. Mortises in the countertop to fit the space.
- C. Additional drill hole for tap/soap dispenser (1 pc. per extra sink is included).
- D. Custom-made trim.
- E. Additional sink.
- F. Extra leg with butt or meter joint (maximum size 35 3/7" x 24". Width according to standard sink skirt).
- G. Towel rail (distance between sink and edge must be ≥9 cm).
Small: 15 3/4" x 2"
Medium: 24" x 2"
Large: 31 1/2" x 2"
- H. Overflow (depending on model).
- I. Cut out for tissue box (5 29/32" x 13/16")

Customized operations

Polished cut out (for under vanity top up to 24" x 16")

Rough cut-out (up to Ø8 cm, for vanity top drain)

Extra cover

Simplicity and Reflection.

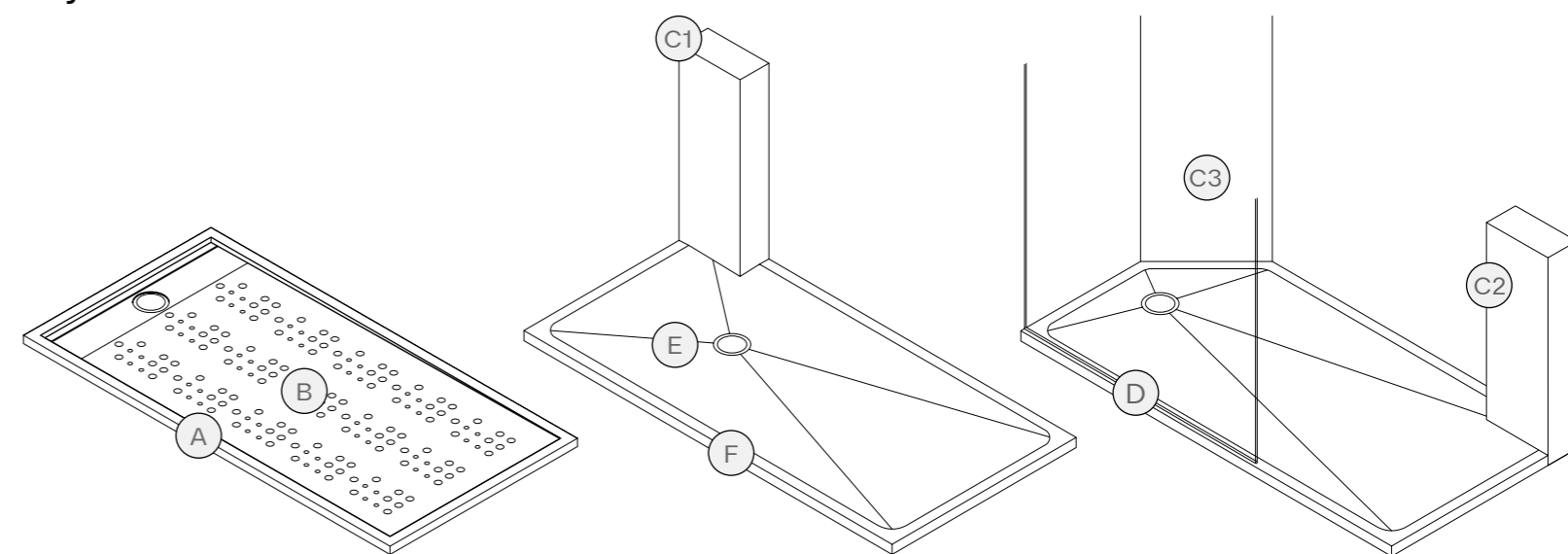


Sink installation guide.

Access the guide by scanning the QR code.



Shower trays



- A. **Kador Suite:** Perimeter frame (1 1/6", 1 4/7" or 2") for shower screen fitting.
- B. **Kador Suite:** customisable sandblasting, subject to slip analysis.
- C1. **Exelis:** Straight cut in the shower tray valve area to suit the space.
- C2. All: Straight cut in the rear area of the shower tray to suit the space.
- C3. All: Diagonal cut in the shower tray to suit the space.
- D. **Kador Suite and Exelis:** Side cut-out for shower screen installation.
- E. **Exelis:** Change of valve position (subject to certain limits).
- F. **Kador Suite and Exelis:** Extra factory assembled curb (please specify the side when ordering).

Extra cover

Kador Suite and Wakka Brim.



Shower tray installation guide.

Access the guide by scanning the QR code.



Accessories



Sinks accessories



Round Click-Clack valve ⁽¹⁾

Sinks:
Evita, Marie, Elegance, Symmetry, HLine Flex and HLine Urban.

Technical information:
Outlet connection: Ø32 (1 1/4")
Water flow: Qmax. 43 l/m

Code: 347146



Color adapter for sink valve

Sinks:
Evita, Marie, Elegance, Symmetry, HLine Flex and HLine Urban.

Technical information:
Outside diameter: 2 7/16"
Inner diameter: 1 3/16"
Overflow: compatible

Code: 347138 (Matt Black), 347153 (Brushed gold) and 347154 (Brushed Nickel).



Grate flat valve + drain pipe

Sinks:
Armony, Simplicity, Reflection and Silence.

Technical information:
Outlet connection: Ø31.75 (G 1 1/4")
Water flow: Qmax. 43 l/m

Code: 341538 (valve) and 347509 (drain pipe).

Shower tray accessories



Shower drain valve without siphon and standard chrome grate ⁽⁴⁾

Shower trays:
Exelis, Kador Suite, Wakka and Wakka Brim.

Technical information:
Drain body: 2"
Drain flange: Ø4 1/4"
Waste pipe: Ø2 1/2"

Code: 345744



PVC tile flange for field installation

Shower trays:
Exelis, Kador Suite, Wakka and Wakka Brim.

Technical information:
Length: 36", 42", 60" or 72"
Width: 1/2"
Height: outside 1 9/16" / above the rim 1"

Codes: 337596 (42"); 337587 (60"); 337547 (72") and 339928 (Tile flange kit with 2 units 36" and 1 unit 60").

1. Chromed valve included with every sink.
2. Adaptor included when extra overflow is requested. Specify if necessary when ordering.
3. Two brackets included when skir- ted sink is ordered. An additional support will be included for each extra sink ordered, at no additional cost. If more supports are needed, include them manually in the order.
4. Chromed grated drain valve included with every shower tray.



Overflow adaptor ⁽²⁾

Sinks:
Elegance and Evita

Technical information:
Máx. length 11 4/5" - Qmax. 15 l/m

Code: 324644



Color adapter for overflow

Sinks:
Elegance and Evita

Technical information:
Max. length 12 3/5"
Water flow: Qmax. 43 l/m

Code: 347147 (Matt Black), 347139 (Brushed gold) and 347129 (Brushed Nickel).



Telescopic support bars ⁽³⁾

Sinks:
Elegance, Armony, Symmetry, Simplicity, Reflection, Silence, Evita, Marie, HLine Flex, HLine Urban and Bath Top.

Technical information:
Length without extension: 14"
Length with extension: 24"
Height: 60 mm 2 1/2" / Width: 1 3/5"
Anchor plate: 3 1/2x4 1/3x1/5"

Code: 347265



Certifications

At Cosentino® we have a strong commitment to meeting the needs of our customers and suppliers and to the environment through the responsible management of our resources. To this end, we are committed to innovation and continuous improvement of our processes, products and services at a global level.

Cosentino®

ISO 9001
ISO 14001
ISO 20400
ISO 50001
UNE 15896
Leed and Breeam credits for Silestone®, Dekton® and Sensa by Cosentino®
CSR (verified by KPMG) based on GRI (Global Reporting Initiative)

Silestone®

Declare Label
EPD (Envirodec)
VOC (UL) Greenguard and Gold
VOC (Eurofins) A+

Dekton®

Declare Label
DGNB Label
EPD (Envirodec)
VOC (UL) Greenguard and Gold
VOC (Eurofins) A+
Chemical Spot Test (SEFA)
Fire Safety Certification APF-1525 (Applus), in accordance with EN 13501-1
Combustibility Test (CSIRO), in accordance with AS 1530.1
Fire Euroclass A1 (Tecnalia), in accordance with 13501-1
Burning Characteristics (QAI), in accordance with ASTM E84-15b
IMO Module B 50171/A2 MED, in accordance with the Marine Equipment Directive 2014/90/EU - Ships.
IMO Module D SMS.MED2.D/109819/A.0, in accordance with the Marine Equipment Directive 2014/90/EU - Ships.
USCG Module B 164.117 / EC2690 - Boats. Fire Test NFPA 285 (Tecnalia)

Bathroom

Sinks

DoC (Declaration of Conformity), in accordance with EN 14688
CSA 800580/IAPMO
TJ5065 (QAI), in accordance with CSA B45.5-17 / IAPMO Z124

Shower Trays

DoC (Declaration of Performance), in accordance with EN 14527
Slip-Resistant DIN 51097
CSA 800580/IAPMO TJ5065 (QAI), in accordance with CSA B45.5-17 / IAPMO Z124

Cosentino® Warranty

Sinks

Shower trays

Bathroom countertops

Cosentino® standard warranty letter

This Letter of Warranty (hereinafter, the "Warranty") shall only be fully valid when the consumer has registered the project within 6 months of the purchase of the product, as indicated in the relevant section, and when the consumer submits the original invoice or purchase receipt (indicating the date of purchase and the name of the dealer of the product). The consumer shall send the defective product to COSENTINO GLOBAL S.L.U. (hereinafter, **COSENTINO**). In order to be effective, this Warranty must be registered online on the website www.cosentino.com. This Warranty is transferable.

COSENTINO® reserves the right not to offer the warranty service free of charge if the requirements set out in the previous paragraph are not met, or if the information provided by the consumer is false, incomplete or illegible. This Warranty is intended for non-professional end users and shall be considered applicable for residential use, such as any building or facility for private accommodation, whether it is a single-family or multi-family dwelling.

End Products Manufactured by Cosentino®

This section of the Warranty is limited to end products manufactured under any of the COSENTINO® brands in the form of three-dimensional products, such as kitchen sinks, sinks, bathroom countertops and shower trays (hereinafter, the "End Products"), and covers any manufacturing defects in such products for a period of **FIVE (5) YEARS**, from the date of purchase. All this under the terms, conditions and limitations described for the rest of SILESTONE® or DEKTON® by Cosentino® products in this document and also available on the website.

This Warranty is only valid when the end products have been correctly installed (in accordance with the applicable regulations and the specific assembly instructions), and have been used correctly according to their intended application (Use, Care and Maintenance Guide). Consumable items (rubber elements, seals, valves, etc.) are not covered under this Warranty.

Warranty Registration

To register as a holder of this Warranty, it must be activated via www.cosentino.com. This website requires certain information for registration, including information relating to the point of sale and/or the marble supplier, as well as the customer. Therefore, we recommend that customers register directly with the point of sale or marble supplier. At the end of the registration, the customer may print this Warranty for their use. In order to benefit from the Warranty, it must be registered within six (6) months of purchase.



⁽¹⁾ Check each approved model.




C·Bath

NORTH AMERICA HEADQUARTERS

355 Alhambra Circle Suite 1000,

Coral Gables, FL 33134 , United States of America

786.686.5060

   @CosentinoUSA

www.cosentino.com

REV. 01 - 03/2023

COSENTINO