

COSENTINO®

Cosentino Spaces

AT THE CENTER
OF DESIGN



SILESTONE

—

DEKTON

—

SENSA

PRODUCT
CONTENT

Cosentino Spaces

AT THE CENTER
OF DESIGN

SILESTONE

—

DEKTON

—

SENSA



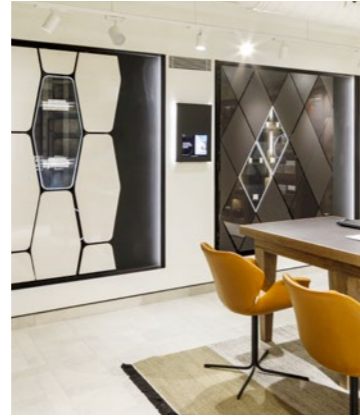
→ 06

01 COSENTINO

Certifications → 08

→ 10

1.1 Cosentino City



→ 16

1.2 C-Top Magazine



→ 18

02 SUSTAINABILITY

- Energy → 19
- Water → 20
- Materials → 20
- CO₂ Neutral → 21

→ 22

03 PRODUCTS AND BRANDS



- Dekton® → 22
- Dekton® Slim → 30
- Silestone® → 32
- Sensa by Cosentino® → 42

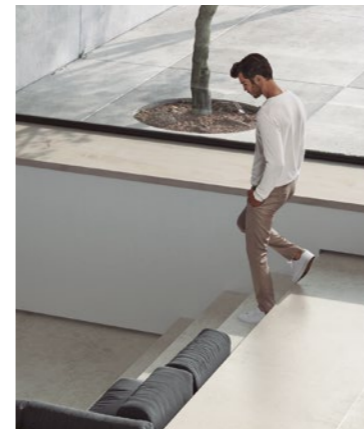
→ 44

04 SPACES



→ 46

4.1 LIVING ROOMS



Innovative surfaces that make the designer's vision come true in the home, to reimagine indoor and outdoor spaces.

→ 96

4.2 BATHROOMS



- Sinks → 142
- Shower Trays → 146
- Floors → 148
- HLine Bath tops → 148

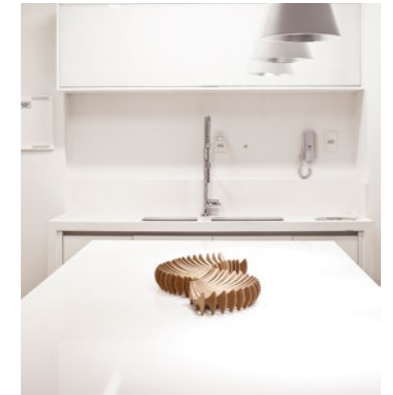
→ 150

4.3 EXTERIOR



→ 186

4.4 KITCHENS



Fregaderos Silestone → 238

→ 240

4.5 FURNITURE





Corporate purpose

Inspiring people
through innovative
and sustainable
spaces.

Mission

Leading company that, responsibly, imagines and anticipates with its customers innovative surfaces of high value for the world of architecture and design.

Vision

To lead the global surfacing market through the action of its brands with innovative architectural solutions that provide design, value and inspire the lives of our customers.

We are Cosentino®

Certifications

Cosentino® is deeply committed to exceeding the needs of our customers and suppliers with respect for the environment through responsible resource management, guaranteeing innovation and continuous improvement of our processes, products, and services globally.

Cosentino®

- ISO 9001
- ISO 14 001
- ISO 20 400
- UNE 15 896
- Leed and Breeam credits in Silestone®, Dekton® and Sensa by Cosentino®.
- CSR (verified by KPMG) based on GRI - Global Reporting Initiative.

Silestone®

- Declare Label
- EPD (Environdec)
- VOC (UL) Greenguard and Gold.
- VOC (Eurofins) A+
- Kosher - Worktops
- Food contact (NSF) All food contact types - Worktops
- DoC (Declaration of Conformity) in accordance with Regulations 1935/2004/EC, 2023/2006/EC, 10/2011/EU.
- DoC (Declaration of Conformity) according to EN 15285, EN 15286 - Floors and coverings.

3D

- DoC Integrity (Declaration of Conformity) in accordance with EN 13310 - Sinks.

Dekton®

- Declare Label
- DGNB Label
- EPD (Environdec)
- VOC (UL) Greenguard and Gold.
- VOC (Eurofins) A+
- Chemical Spot Test (SEFA)
- Fire Safety Certification APF-1525 (Applus) based on ISO 1716
- Combustibility Test (CSIRO) based onn AS 1530.1
- Fire Euroclass A1 (Tecnalia) based on 13501-1
- Burning Characteristics (QAI) based on ASTM E84-15b
- DoC (Declaration of Conformity) in accordance with EN 14411 Annex G - Floors and coverings.
- DoC (Declaration of Conformity) in accordance with European directive 2014/90/EU - Boats.
- DoC (Declaration of Conformity) according to ETAG 034 Article 66.3 - Façades
- ETA 14/0413 - Ventilated facades.
- BBA 16/5346 - Ventilated façades
- NOA 19-0227.02 - Ventilated facades.
- Seismic Test Report T1601 (NCREE)
- Kosher - Countertops
- IMO Module B 50171/A2 MED according to marine equipment Directive 2014/90/EU - boats
- IMO Module D SMS.MED2.D/109819/A.0 according to marine equipment Directive 2014/90/EU - boats
- USCG Module B 164.117 / EC2690 - boats
- Fire Test NFPA 285 (Tecnalia)
- CoC Civil Defence Certificate - Ventilated facades.

Bathroom Colletion

Sinks

- DoC (Declaration of Conformity) in accordance with EN 14688.
- CSA/IAPMO TJ5065 (QAI) based on CSA B45.5-17 / IAPMO Z124

Shower Trays

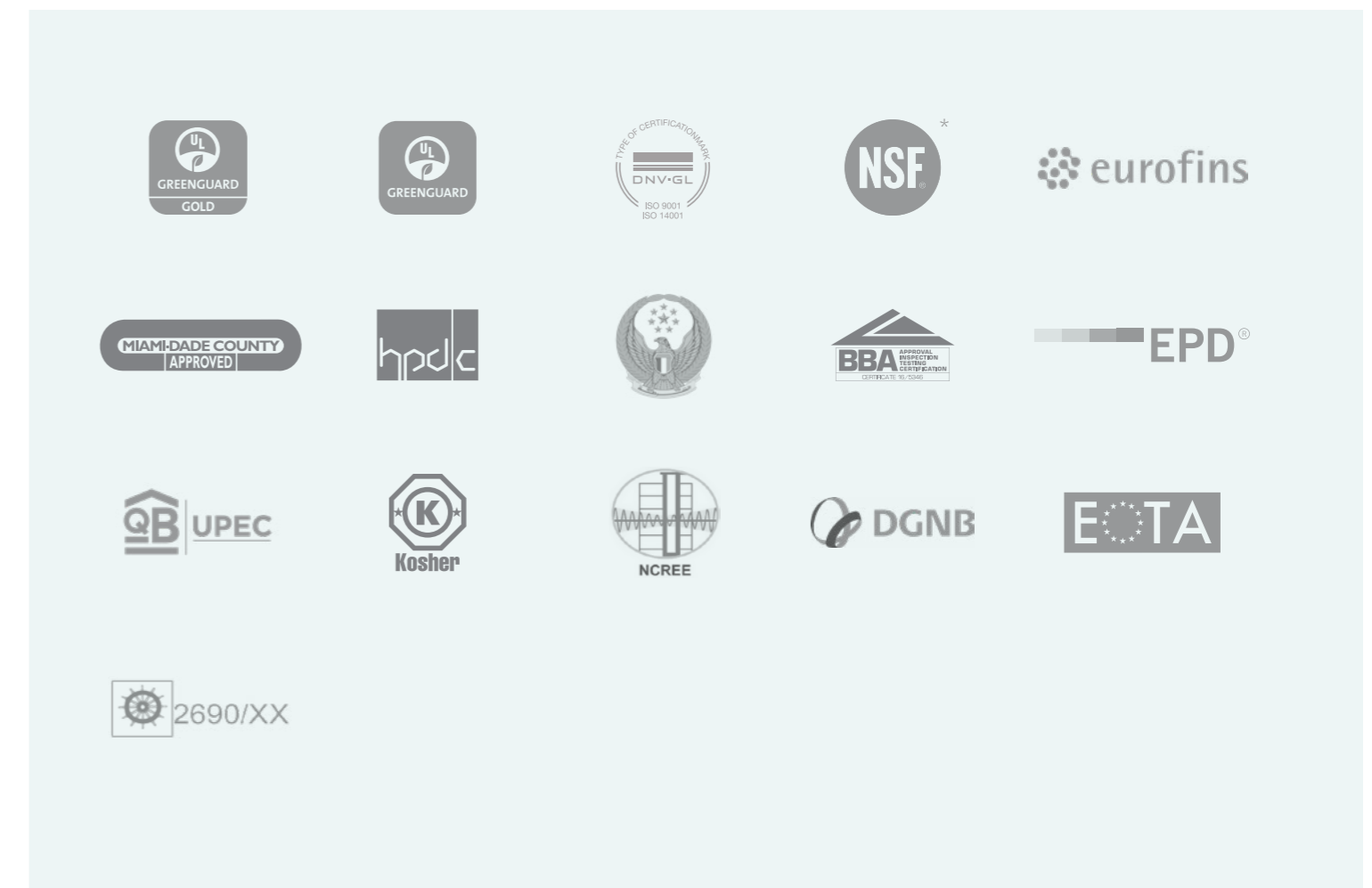
- DoC (Declaration of Conformity) in accordance with EN 14527.
- Slip-Resistant TJ5148-2 (QAI) based ASTM F462
- CSA/IAPMO TJ5148-1 (QAI) based on CSA B45.5-11 / IAPMO Z124

Sensa by Cosentino®

- VOC (UL) Greenguard and Gold.

Natural Stone by Cosentino®

- DoC (Declaration of Conformity) according to EN 1341, EN 1469, EN 12057, EN 12058 - Floors and coverings.



* To obtain more information about hues with NSF certificate please visit www.nsf.org

→ Cosentino® City Sydney / Atelier LAB



“Inspire people through innovative spaces”

COSENTINO

Get inspired

→ Cosentino City Barcelona

COSENTINO CITY

Cosentino® City

Live the Cosentino® DNA with a multifunctional space to create connections.

Cosentino® puts at your disposal the network of Cosentino Cities in over a dozen cities across the world. They were created as meeting places for inspiration and creativity, for interior designers and architects to find everything they need from Cosentino.

In our design and inspiration showrooms you will have access to:



→ Cosentino® City Amsterdam



Personalized Visits

Arrange visits and meetings with your customers to show them Cosentino's innovative surfaces and products in a unique space.



New digital services

Use our augmented reality digital services to help your clients visualize their projects.



Experience Zones

A space to experiment with materials, textures, and surface patterns, combining them to create new design possibilities at our Atelier Lab.



Expert Advice

Finding the right design solution for any type of application, through experimentation and combination of Cosentino's most innovative brands, such as Silestone®, Dekton® and Senso byCosentino®.



Events and Speakers

Learn and be inspired by our continuous programs of activities, speakers, and encounters with media specialized on design, architecture, culture, and creativity.

Our showrooms across five continents

- LOS ANGELES
- MANHATTAN
- MIAMI
- SAN FRANCISCO
- MONTREAL
- TORONTO
- BARCELONA
- MADRID
- LONDON
- MILANO
- SINGAPORE
- SYDNEY
- DUBAI
- AMSTERDAM
- PARIS
- MALLORCA
- STOCKHOLM
- TEL AVIV



Digital Slab.

Cosentino® Digital Slab allows the visualization of all Cosentino products in a giant 4K 80" vertical screen.

This way, you'll be able to see the product closely resembling their original format and visualize hundreds of slabs with the swipe of a finger.

An amazing tool to experience the potential of Cosentino products.



Atelier Lab

A space to experiment with materials, textures, and surface patterns, combining them to create new design possibilities.

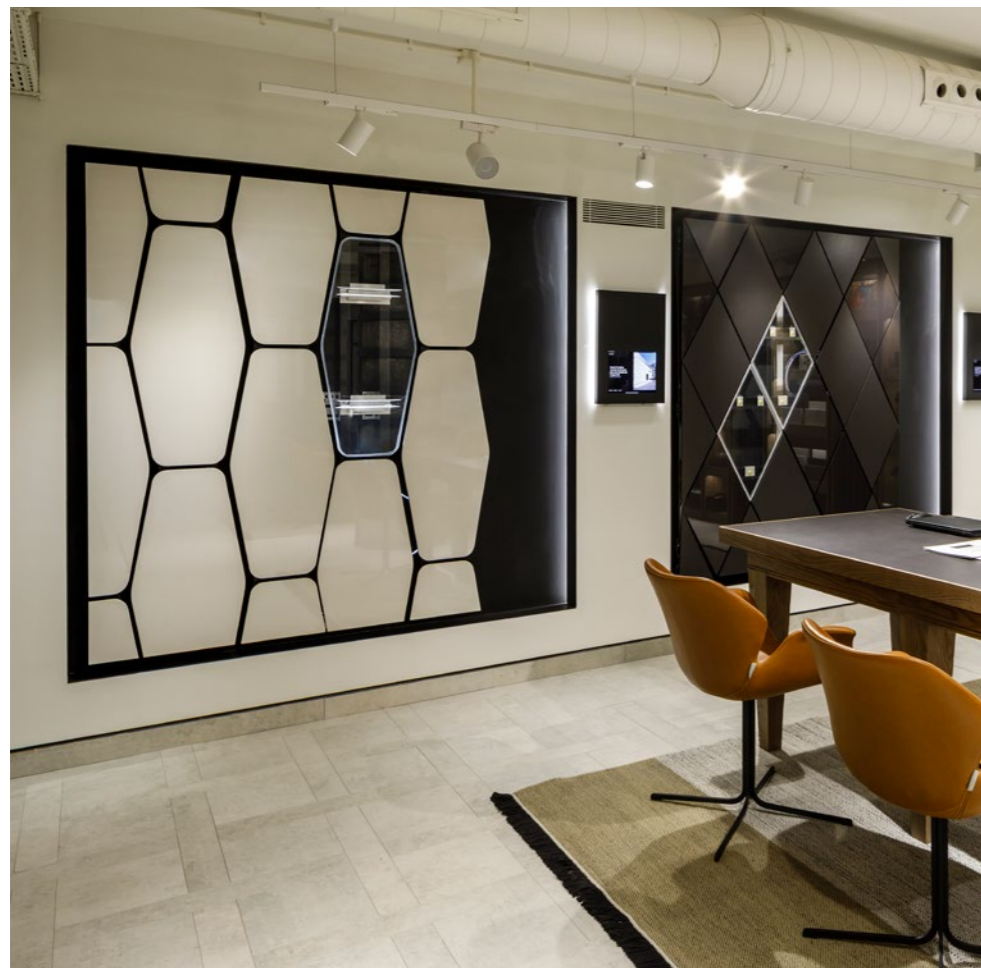
→ Cosentino® City Barcelona



Exhibition of facade system.

In our Cities you will experience a selection of the most interesting facades and buildings created by prestigious architects.

The fixation system and projects details can be explored through an interactive screen.



Your project. Everywhere.

Project Exposure

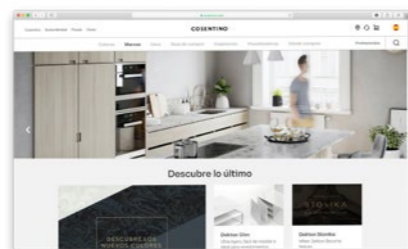
Cosentino® wants designers' creative efforts and ideas to have maximum exposure.

We have created different content exposure channels in the world of design, generating prestige and reach:



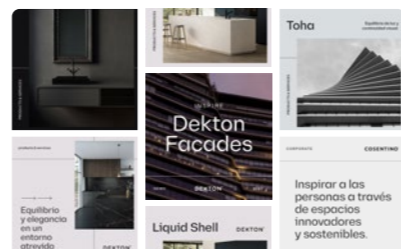
C-Top Magazine

C-Top Magazine is our design and trends magazine and the creative vehicle for the program. Here, you will find themes related to the design world, interviews with designers, highlighted projects, and inspiring case studies. And, of course, the goal is to have your projects among its 150 pages, which will also be distributed digitally.



Cosentino.com

Cosentino's web portal features content destined to inspire consumers and designers with a monthly reach of millions of users globally. Through our "Interiors" section, we give visibility to the most relevant interior projects.



Social Media

We will maximize exposure of iconic projects through our social media channels, creating a deeper connection with users and design professionals.

→ C-Top Magazine

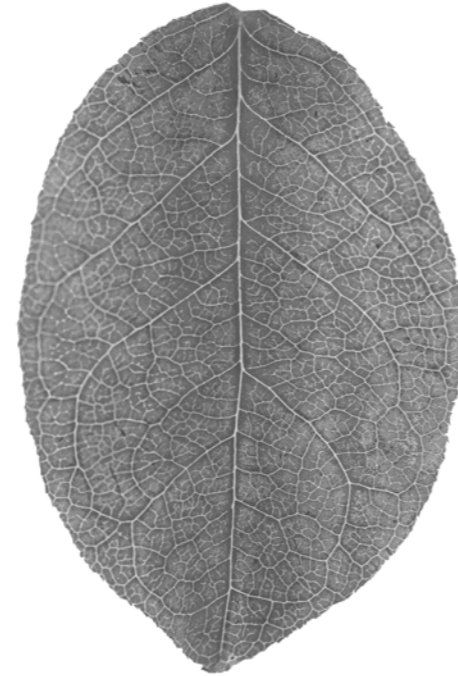


Sustainability Cosentino®

At Cosentino®, we approach sustainability as a collective commitment that stems from the individual involvement of those that are a part of Cosentino®.

Our continuous improvement efforts involve constant analysis of our entire value chain - from the acquisition of raw materials to the delivery of the final product of consumers.

We are firmly aligned with the United Nations' 2030 Agenda. As a global leader in the manufacturing and distribution of innovative surfaces from our headquarters in Almeria Spain, we are committed to driving the path towards local and global sustainability.



→ Olives in Cosentino industrial park.



→ LED lighting throughout the Cosentino® industrial park.



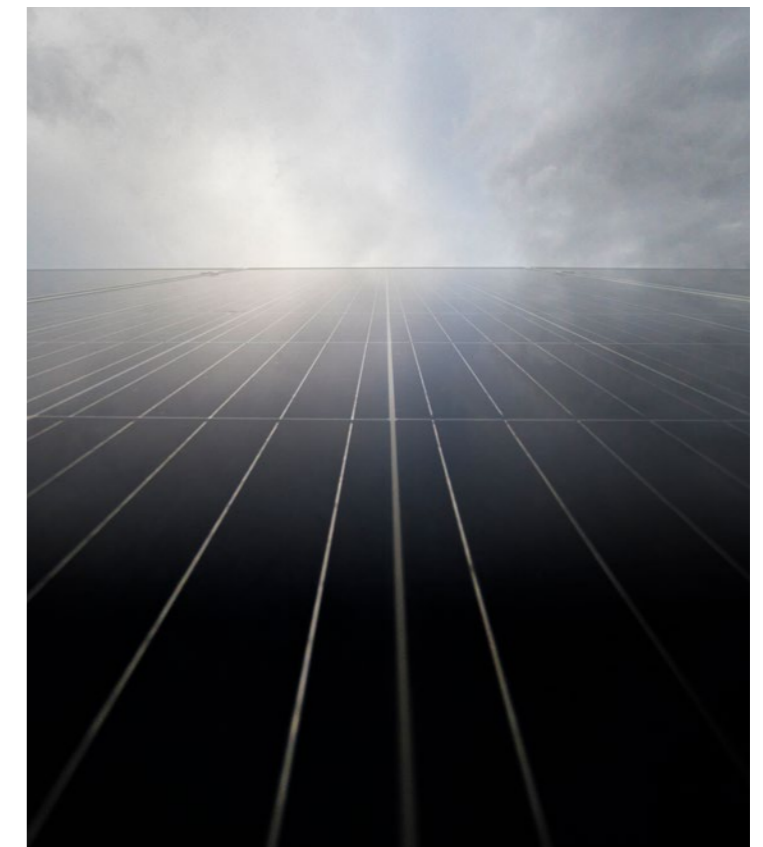
→ Photovoltaic installations at Cosentino®

Energy

Energy efficiency and the use of renewable energy sources are the two key elements of our strategy to minimize the impact of our activities.

100% of our energy consumption comes from renewable energy sources. Additionally, for 2021 we aspire to reach 30% energy self-consumption.

On the other hand, the constant improvement of our processes and machinery allows us to reach a high level of energy efficiency, which translates in an 8% decrease of our electrical consumption in our production processes.



Water

Since our inception, we have valued the importance and understood the challenges of proper water management.

It has motivated us to implement a sustainable use policy maximizing the efficient use of water resources in the different production processes.

We use cutting-edge technology to achieve 99% recycled water in all our processes in the Cosentino Industrial Park.

In addition, we use 100% of the surplus water to irrigate green areas.

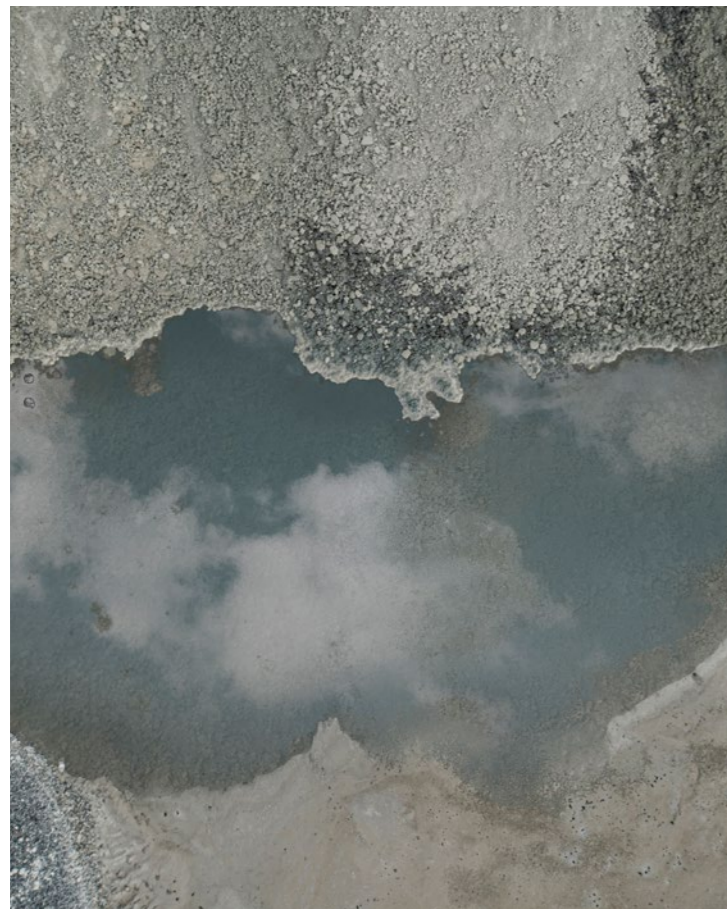


Materials

We are committed to making the most of the materials we work with throughout the value chain.

In recent years we embarked on an ambitious R&D project called "Circularity" to reuse the materials from which we make our products.

Another action is the disruptive HybriQ+ technology that brings about the new generation of Silestone. HybriQ+ incorporates a minimum of 20% recycled materials and is manufactured with 100% renewable energy and 98% recycled water.



Carbon neutrality: Sustainable design



Cosentino Group considers sustainable development as an essential commitment in the company's growth strategy, with regard to the respect and protection of the environment.

We address aspects related to the efficient use of natural resources, proper waste management, atmospheric emissions, discharges and other potential impacts in order to make sustainable use of natural resources and protect biodiversity and ecosystems.

At Cosentino we are strongly committed to the 2030 Agenda promoted by the United Nations and the Local Action Plan promoted by the Spanish Government.

As a demonstration of our commitment, we have managed to offset the 42,532 tonnes of CO2 emissions resulting from one year of Dekton® production, thus obtaining the Zero Carbon Footprint label for the entire product life cycle in 2019 for all Dekton® brand products.

In addition, the Sunlit Days series by Silestone® is the brand's first collection to achieve this certification.



We reduce our impact

We are committed to energy efficiency, emissions reduction and sustainable mobility to minimise our impact.

- **Energy efficiency:** it is a priority objective for Cosentino to reduce energy consumption in the production process and in the general group activity, which is why we have managed to obtain 100% of the electricity we use from renewable sources.
- **Emission reduction:** 2.8 million euros have been invested in the implementation of an energy management and monitoring system for the heat systems, which allows heat from the Dekton® furnaces to be recovered and used in the dryers, thus reducing emissions.
- **Sustainable mobility:** we have recently joined the 'Plan Sumamos Salud + Economía' under which we have a Mobility Policy that helped us to avoid 230 TCO2 in 2018.



We calculate our carbon footprint

It is an external body that verifies the calculation and the results of the carbon footprint that are submitted to the Spanish Ministry for Ecological Transition and Demographic Challenge (MITECO, in Spanish), which is responsible for approving and registering our Footprint, becoming part of the 'Spanish registry of carbon footprint, offsetting and carbon dioxide absorption projects' of the Spanish Climate Change Office (OECC, in Spanish), whose results are made public as an exercise in transparency.

This calculation uses energy and/or fuel consumption data, as well as raw material consumption data collected from all **Group subsidiaries** (Centres, Workshops, Cities, HUBs, HQ, etc.) with a view to offset these emissions.



We offset our emissions

To achieve carbon neutrality in Dekton®, at Cosentino **we offset our emissions over the entire product life cycle** (scopes 1+2+3) by investing in GHG emission reduction projects.

For this purpose, we identify those projects that meet the requirements for responsible offsetting and that, in turn, have a strong social dimension that contribute to the achievement of the **Sustainable Development Goals of the UN's 2030 Agenda**.

The project selected to offset the 42,532 tonnes of CO2 emissions, resulting from one year of Dekton® production, has a direct impact on sustainable development by **supporting the local economy, providing training and job opportunities**.

Dekton®

by Cosentino®



Innovation applied to design

Dekton® is a sophisticated blend of more than 20 minerals extracted from nature. Its production process is the result of years of learning and inspiration in the manufacture of glass, state-of-the-art porcelain and quartz surfaces.

Electron microscopy makes it possible to appreciate the reduced porosity of the material, a consequence of the sintering and ultracompaction process exclusive to Dekton®. This reduced porosity and the absence of micro-defects causing stresses or weak points are the distinguishing feature of Dekton®.



Sintered Particle Technology

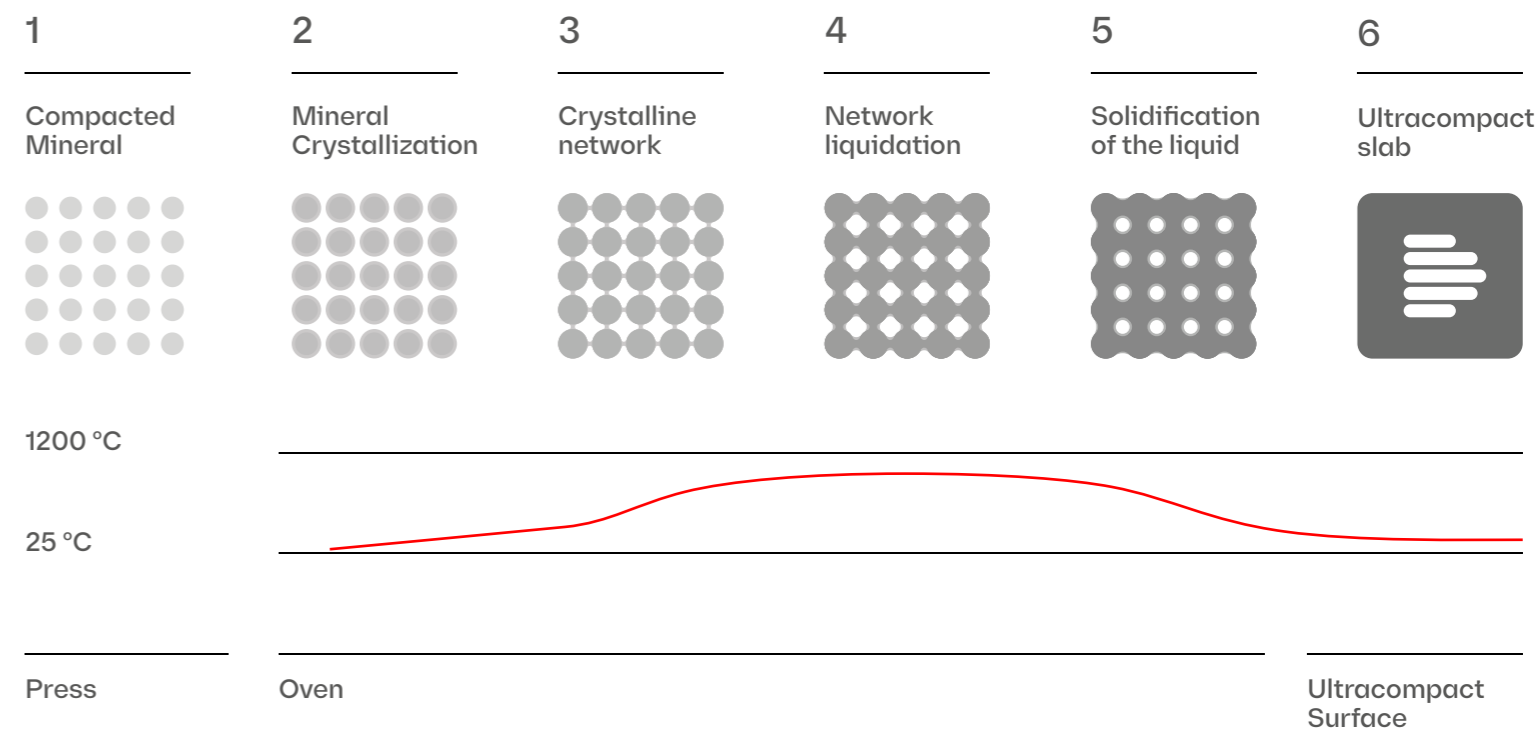
Dekton® uses an exclusive SPT in its manufacturing, capable of sintering mineral particles, bonding them together and compacting their internal structure. This innovative technological process mimics and accelerates the processes that natural stone undergoes when exposed to high pressures and temperatures for millennia.

Dekton® emulates in a few hours what nature takes millennia to do, thanks to the exclusive SPT technology.

- The furnace has a length of 180 metres (196 yards).
- Temperatures reach approximately 1250°C (2300°F).
- Total processing time depends on the thickness of the slab (about 4 hours).

Safety in facades and cladding

In order to reinforce safety in ventilated facades and interior cladding, there is the possibility of adhering a safety mesh behind the Dekton® slab, specially developed to prevent falls due to breakage. It is a 00 g/m² fiberglass mesh adhered to the material with epoxy resin. Safety is one of Cosentino's main concerns.



Dekton® Product features

Dekton® meets all the technical specifications required in a high-resistance surface to materialize any interior and exterior residential design project.



Low water absorption

The water absorption of Dekton® is negligible; therefore, it does not undergo expansion movements.



High resistance to UV rays

Dekton® is highly resistant to ultraviolet light (UV rays) and will not fade or degrade over time in any outdoor application.



Superior mechanical strength

The wide variety of Dekton® thicknesses allows its use in applications where a high wind or impact resistance are a requirement of the project.



Dimensional stability

The expansion of Dekton® is minimal: the panels can be installed with thin joints. These joints will retain their width under all conditions.



Freeze and thaw resistance

The resistance that Dekton® has demonstrated in durability tests under freezing and thawing situations in various conditions proves its high performance.



Abrasion resistance

Dekton® is even more resistant to abrasion than granite and porcelain, being the ideal surface for facades or floors subjected to high activity in commercial applications.



Fireproof material

Dekton® can withstand the highest temperatures without burning, charring, or cracking. The standar European tests EN 13501 y ASTM E84 qualify the ultracompact surface as non-combustible.



Durable Color

The control of pigmentation and decoration in the manufacture of Dekton® gives the material better color uniformity for each slab, resulting in a long-lasting product that does not fade over time.



Resistant to scratches

Dekton® is one of the most scratch resistant surfaces on the market today. It has a rating of seven (7/10) on the Mohs scale of mineral hardness.



Maximum fire and heat resistance

Dekton® has been successfully installed in facades located in areas exposed to high temperatures.



Easy cleaning and minimal maintenance

It is easy to remove Dekton® graffiti with standard cleaning products. Reduced maintenance costs.



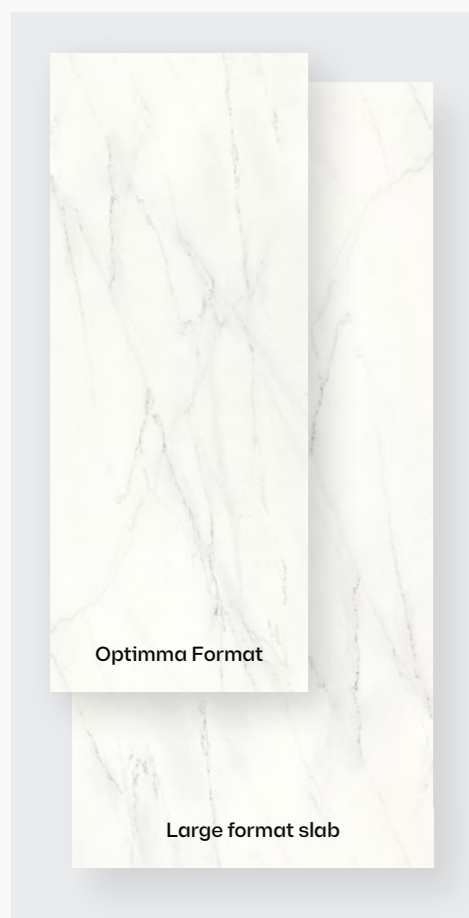
Resistance to stains

Dekton® is a material that is resistant to stains from different sources so that they will not be permanent.

Dekton® Formats

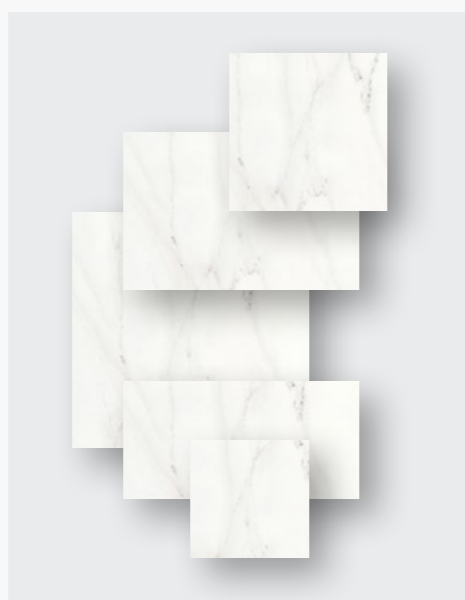
Adaptable and versatile.
In any space.

Dekton® offers a variety of standard sizes, custom sizes and thicknesses to meet the functional and creative needs of the designer in any interior or exterior project, no matter how complex.



Large format

Optimma Format → 260 x 100 cm
Large format slab → 320 x 144 cm



Other formats

- 106 x 71 cm
- 142 x 106 cm
- 142 x 142 cm
- 142 x 71 cm
- 142 x 79 cm
- 159 x 142 cm
- 159 x 71 cm
- 71 x 71 cm
- Tailor-made format



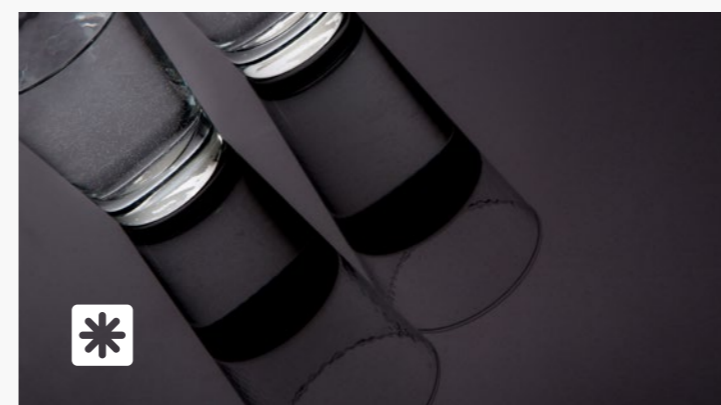
Thicknesses

- 0.4 cm
- 0.8 cm
- 1.2 cm
- 2 cm
- 3cm

Dekton® textures

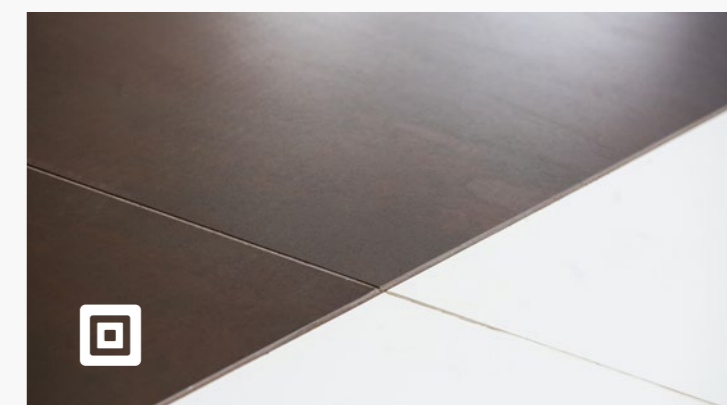
Different Sensations.
Richness of Shades.

Dekton® comes in different textures so that the only limit is the architect's or designer's imagination: from the finish ultra-glossy, to matte or velvety textured options.



X-Gloss

A luminous and dazzling finish achieved by mechanical polishing, without the need for enamels or other materials.



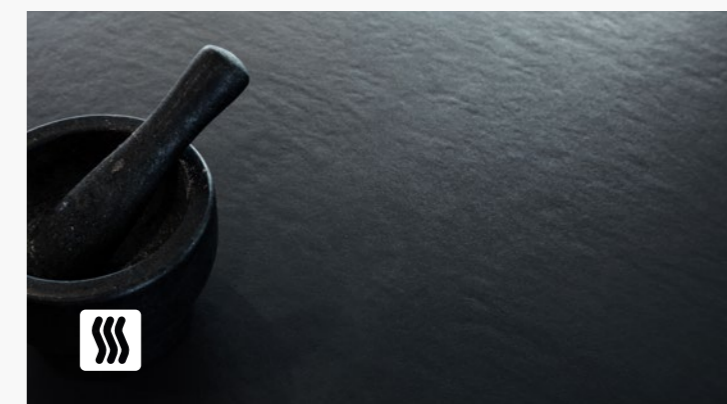
Matte

The matte texture pursues a natural, shine-free appearance, ideal for achieving a harmonious and timeless finish. Most Dekton® products are manufactured with this finish.



Velvet

Velvet is Dekton's velvety texture. The materials chosen in Velvet create a feeling of warmth and comfort. This texture is perfect in classic colors, with veins.



Matte or Textured Velvet

Matte or Textured Velvet textures combine the warmth of velvet with the roughness of a textured, imperfect material. It is ideal for emulating the finish of natural stone.

Optimma

New optimized Dekton® format.

The ultimate interior cladding solution.

The Dekton® slab has been optimized with its most common applications in mind to create a new format with improved cost, design, installation and handling. Introducing our first Optimma family format specifically for cladding: Optimma format 260 x 100 x 0.4 cm.



**260x 100 cm
in 4 mm thickness**

The slabs are created in 4mm thickness, which gives it a lightness that allows easy handling, and in case of need, it can be easily cut to adapt the product to all spaces.



Cost Efficiency

The sizes were optimized to the most common coating standards, this allows us to avoid waste, which in turn reduces price.



Design with Purpose

The board has been created to take advantage of its total height, which makes it much easier to cut it for cladding.



Easy to Install

The product is smaller and lighter, which makes it easier to use transport and handling. Cutting can be done with simple tools. The edges are already bevelled and the piece is always meshed.



Design Match

The design has been conceived to place the boards vertically to create a continuous design.



Dekton® Slim

High aesthetic value and performance in vertical cladding and furnishings.

Minimum Thickness of 4mm → Large Format & Performance

Dekton® Slim is the ultra-thin 4mm thickness in large format that offers unlimited design options and incredible ease of installation and transportation. Ideal for bathroom and kitchen floors and walls, as well as all types of furniture.

01 → Large format and minimum number of joints

Its large format of up to 3200 x 1440 mm covers large surfaces avoiding as much as possible the number of joints and therefore, dirt.

02 → Easy installation

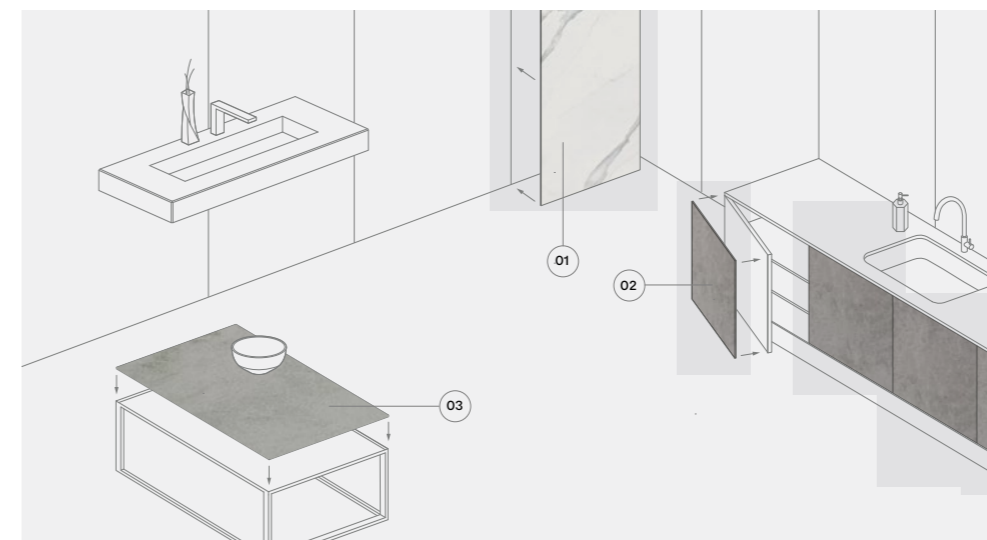
Having such a light format, but with so many possibilities, simplifies everything. Its thin thickness allows for quick cutting and on-site adjustments with ceramic tile tools.

03 → Design without limits

Dekton® Slim is very easy to work with and can be cut to size. It adapts to all spaces.

04 → Maximum resistance to humidity

Dekton® Slim is the ideal ultra moisture and stain resistant coating for bathrooms. A high performance product that requires no more maintenance than a simple damp cloth.



01 → Bathroom Cladding

Maximum resistance against humidity with minimal joints.

02 → Kitchen Cladding

Reduced thickness, infinite possibilities

03 → Furniture Cladding

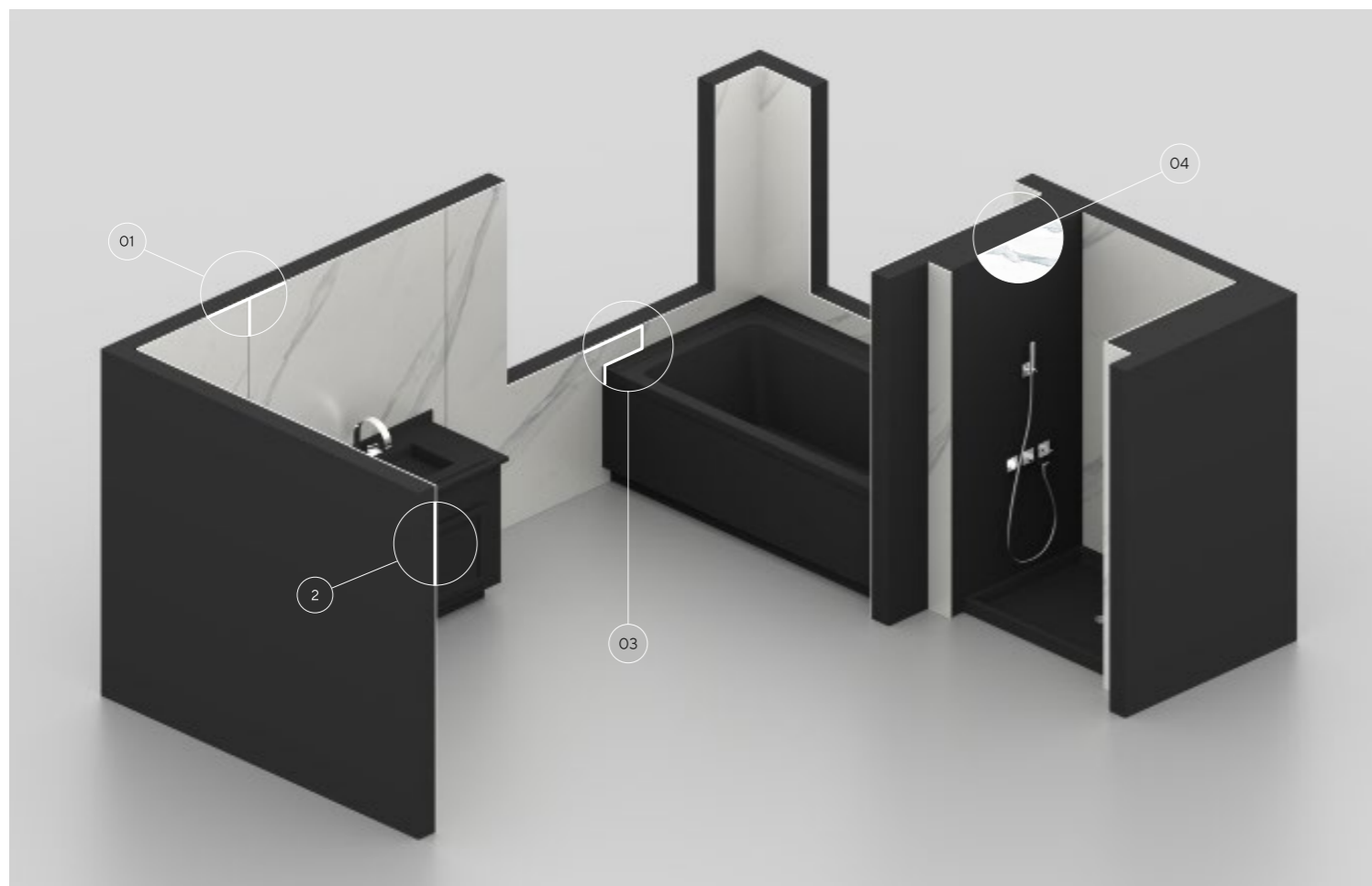
Reduced thickness, infinite possibilities

DEKTON® SLIM
designed by COSENTINO



At Cosentino® we offer personalised Customer Service. Ask as many questions you like and request all the advice you need to ensure you get exactly what you want out of the new Dekton® Slim.

Find your nearest Cosentino Centre at www.cosentino.com





Silestone®

by Cosentino®

The ultimate mineral HybriQ surface.

Silestone® is a hybrid surface of minerals and recycled materials to dress interior spaces with color and texture.

Silestone® advantages.

Silestone® is extremely durable in kitchens, bathrooms and other spaces exposed to constant activity and use. In addition, it offers an unlimited range of colors and textures.

Silestone® has many advantages, including minimal maintenance, high resistance to stains and scratches, and a low fluid absorption rate. This resistance to fluids and its minimal joints make Silestone® the ideal solution for places where liquids are present. Silestone® is resistant and allows for prolonged enjoyment over time, beyond what is expected.

The properties of Silestone® are the result of constant years of innovation that guarantee maximum hygiene and safety.



Acid and Scratch Resistant

Silestone® has a high level of scratch and scuff resistance, impacts, as well as to external aggressions and acids common in daily kitchen use.

Impact Resistant

The high impact resistance of Silestone® allows the handling of hard objects (pots, pans, trays, etc.) with total peace of mind.

Stain Resistance

Silestone® is a non-porous surface that is highly resistant to stains from coffee, wine, lemon juice, oil, vinegar, makeup and many other everyday products.



Silestone® with HybriQ+ Technology®

HybriQ is a pioneering technology from Silestone® (PAT. PENDING). An innovative generation of surfaces composed from a hybrid formulation. A new high-performance blend of premium minerals, quartz and recycled glass.

The result is a more beautiful and sustainable product. Silestone with HybriQ technology is made through a manufacturing process completely fueled by renewable energy and recycled water. This new generation maintains the guaranteed quality of Silestone.

More innovation

Cosentino®'s commitment to offering the most innovative and sustainable surfaces leads Silestone® to exceptional performance and depth of surprising color. Silestone® is the combination of innovation and sustainability.

More sustainable

HybriQ+ uses a minimum of 20% recycled materials, 98% recycled water and 100% renewable energy.

This new generation of surfaces maintains the 25-year Silestone® quality guarantee.

More design

The new mineral composition allows for greater depth of color, textures and Silestone® tones to create unique and personalized interior spaces.

Same benefits

Silestone® with HybriQ+ maintains all the characteristics of quality, durability and warranty that have made Silestone® the market reference in its category.



Silestone® formats

Infinite possibilities for
indoor applications.

Silestone® is available in slabs up to 325x159cm and in 30x30cm, 40x40cm, 60x60cm, 60x30cm and 60x40cm tiles. They are marketed in thicknesses of 1.2, 2 and 3cm. In addition, different pieces can be combined to simulate thicker edges.



Large format

Tablas Jumbo → 325 x 159 cm
Tablas Estándar → 306 x 140 cm

Jumbo Slabs

Cosentino® offers Silestone slabs in Jumbo format (325x159cms max.). This format allows for the creation of large surfaces with minimal jointing, design versatility, and better hygiene. This way, the slabs' use is optimized and waste minimized.



Floor format

- 30 x 30 cm
- 40 x 40 cm
- 60 x 60 cm
- 60 x 30 cm
- 60 x 40 cm
- Tailor-made formats



Thicknesses

- 1.2 cm
- 2 cm
- 3 cm
- Customised thicknesses by adding different pieces together

Silestone® textures

Surface sensory
perception.

In order to adapt to all styles, Silestone® offers different textures for any of its applications. Polished, Suede or Volcano are three possibilities that make your imagination fly and have the worktops, floors or walls with the texture you have always wanted.



Polished

Extreme shine, a smooth surface to the touch and a uniform, intense and consistent color.



Suede

Extra matte finish, offers a flat, non-rugged surface, which conveys a unique experience to the touch for its beauty and fineness.



Volcano

Rustic texture, rough to the touch, but soft at the same time, an attractive and pleasant to the touch surface

New Sunlit Days Collection

Sunlit Days. An immersive and sensory journey through light and colour that takes us back to our roots and transports us to a more natural, more sustainable and more compassionate future.

We present the first Silestone® Carbon Neutral collection, a commitment to sustainability where we reduce and offset the emissions from the manufacturing process with reforestation projects. This environmental commitment translates into a collaborative program for the preservation of the seabed and our environment.

Sunlit Days is inspired by evocative Mediterranean tones, and a unique lifestyle.

A new breath. A new spirit. A new Silestone®.



WITH

HYBRIQ+

A CARBON NEUTRAL SERIES

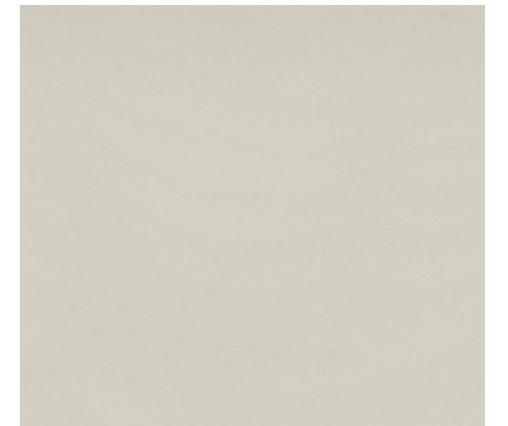


Faro White

White is the colour of our Mediterranean. The one that draws the waves on its shore. The one that reflects its light and evokes its warmth. White represents purity par excellence, and more than any other colour, it transmits serenity. It is the colour of simplicity, and yet, the most complex and versatile of all colours. Just like its texture, which is surprisingly silky to the touch, every time you lay your hands on it.

Faro White is inspired by the lighthouses that draw the way for ships, it will fill your space with light and sea, for people who love life.

Faro White is the sparkle that brings us closer to what really matters: our people.



Faro White pairs well with natural fibres and aged woods, raffia and metals with matte finishes.

It is a good match for decorative elements of pure and curved lines, giving rise to spaces stripped of ornamentation that convey calm and purity.

Cincel Grey

Some people say that grey is just grey. Those people will speak of wood as just that, wood. They will not speak of ebony, almost jet, nor of crimson mahogany. Because wood is not just wood, nor is grey just grey.

Cincel Grey is a fine-grained grey, silky and full of nuances. A grey that when bathed in light unfolds its melody of contrasts between matte, sheen and reminiscent of other colours. It is a grey for those who know how to look and feel.

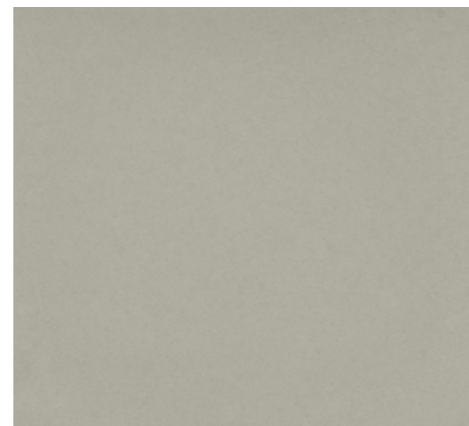
Its touch, like the rest of the colours in the series, is a sensory experience even for the hands most accustomed to delighting in the textures of each wood.



Posidonia Green

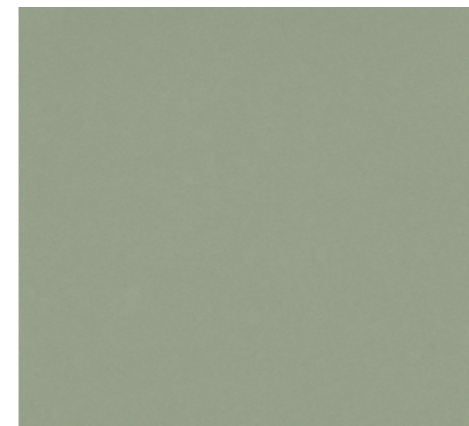
Under the Mediterranean, time stands still. Everything is slowness and harmony. The posidonia meadows sway, dancing a hypnotising dance of incredible greens. Greens that captivate the eye and that both literally and metaphorically, fill the seabed with life.

This is Posidonia Green. A green that asks for colours around it and that transports this beauty so far inaccessible to our spaces. A green that infuses vitality, joy and nature on all four sides. A green that at every moment breathes a different melody of brightness and tones, just like the marine treasure that gives it its name.



Cincel Grey is a neutral, adaptable gray that balances easily between warm and cool tones. Therefore it complements polished metals and rustic finishes and combines very well with accents of earthy colours, and resistant fibres such as plush, felt and denim.

It is a perfect colour for everyday spaces paired with textiles and elements that pay tribute to minimalism.



Posidonia Green is the perfect match for woods such as bamboo, soft textures, fibres such as cotton or Lyocell, and twill-like structures which help to create these spaces.

Marbling, rustic, natural elements and monochromatic geometries are perfect options to complement this luminous green.



Cala Blue

The first time you see the sea and its breeze embraces you. The feeling of floating in the immensity. Away from worries, letting the sun and water bathe your skin. Savor the salt that envelops your body, the sound of the waves breaking on the shore, see the infinite horizon. A game for the five senses. A unique touch that caresses the skin just like the sea.

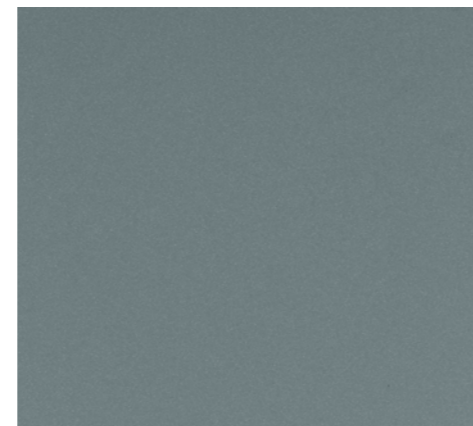
That is Cala Blue. A deep, modern blue that simulates the balance between the depth and the surface of the sea when interacting with light. A mature color that vibrates with the rest of the elements that complement the space it inhabits. Let yourself be rocked by the Mediterranean.



Arcilla Red

There is a land that breathes fire, that seems to flow blood, a land that is pure life. A land of clay, of an infinite red that displays intoxicating tones and fills you with warmth, life and joy.

This is Arcilla Red. A red that makes you fall in love. An earthy red that tastes like wine and smells like petrior. A red that brings the purest essence of our origins to our home. A burst of colour, an accent, a beating heart. A red that turns the kitchen into a living space that longs to be lived in. A colour that can be tasted with all five senses. A unique texture that can be enjoyed with both touch and sight. Arcilla Red comes to endow any space with this passion, this closeness to the earth, with pure life.



The versatility of Cala Blue allows combinations with dark woods such as walnut and ash, as well as with dark metals to give a more classic look. Paired with nude colours and woods, it is perfect for rustic spaces.



Arcilla Red pairs nicely with reddish woods such as oak or cedar as well as grayer woods like anthracite. Gun metal metals and handmade fabrics are perfect companions to create rustic and bohemian spaces.



Sensa

by Cosentino®

Protected Natural Stone

Sensa by Cosentino® is premium maintenance-free natural stone brought to you by Cosentino, a world leader in the natural stone industry.

Sensa by Cosentino® is treated with a revolutionary stain protection treatment called SenGuard, and comes with a 15-year stain warranty.

SENSA
15
YEARS
WARRANTY

SENSA
by COSENTINO®



Sensa by Cosentino® Treatment

The long-lasting, chemically-integrating technology allows the material to breathe. This technology enhances its powerful properties.

The process alters the surface tension of the stone causing the material itself to prevent liquids such as water, coffee or oil from penetrating



SENSA
by COSENTINO®

Normal



Applications

Sensa kitchen worktops.
Natura, stain-proof beauty.

Enjoy the design, hardness and resistance of natural stone without fear of stains. Sensa by Cosentino® quartzites and granites feature a revolutionary stain-resistant treatment that protects them for the life of your worktop.

Textures

Unique shapes for
unrepeatable surfaces.

The colors and textures of Sensa by Cosentino® have the patient and whimsical design of nature. Each of the seven available shades has a texture that produces different effects and sensations: suede, polished or caresse.





→ 46

5.1 LIVING ROOMS

Redesign the living room and turn it into an open, functional, comfortable space integrated with the rest of the house.

→ 150

5.3 EXTERIOR

Revolutionize the outdoor space so that the porch, terrace or garden becomes a continuation of the house.

→ 240

5.5 FURNITURE

Rediscover the exclusivity of custom-designed furniture for every space.



→ 96

5.2 BATHROOMS

Reinvent the bathroom to create a world of sensations through a unique and integral design concept.

→ 186

5.4 KITCHENS

Redefine the function of the kitchen in the home and transform it into the heart of the house.



Living rooms

The living room is transformed into a personal and timeless space with Cosentino surfaces; an expression of sophistication and functionality.



Live your space

Rediscover your home's living space

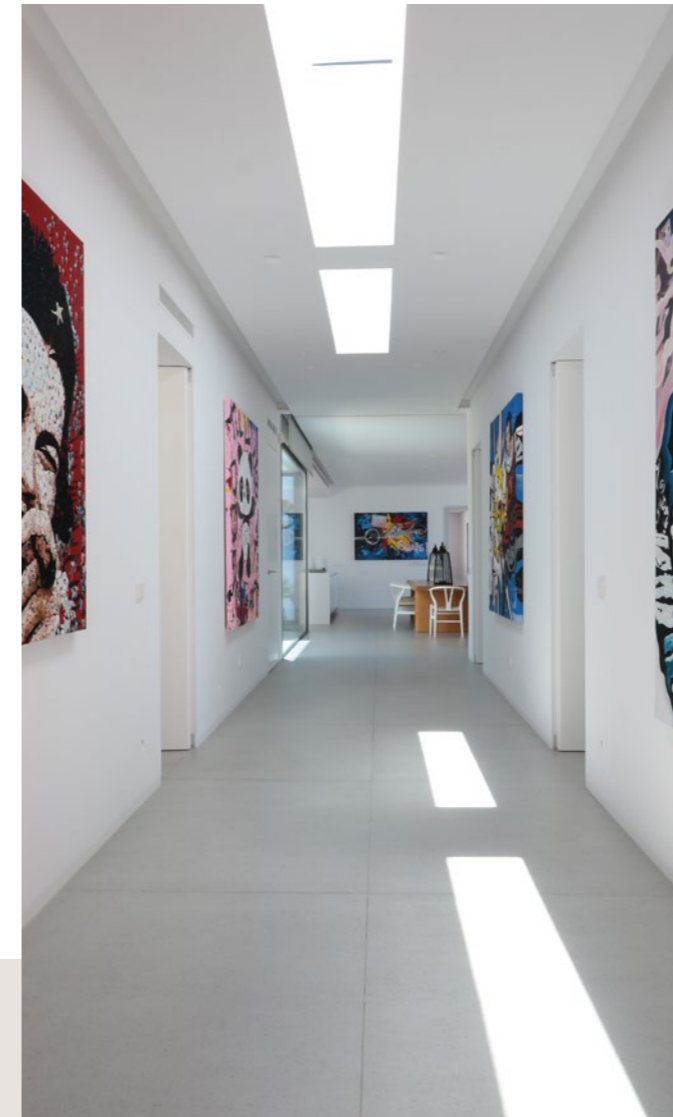
An integrated solution
with maximum versatility
and functionality.

Endless personalization
possibilities.



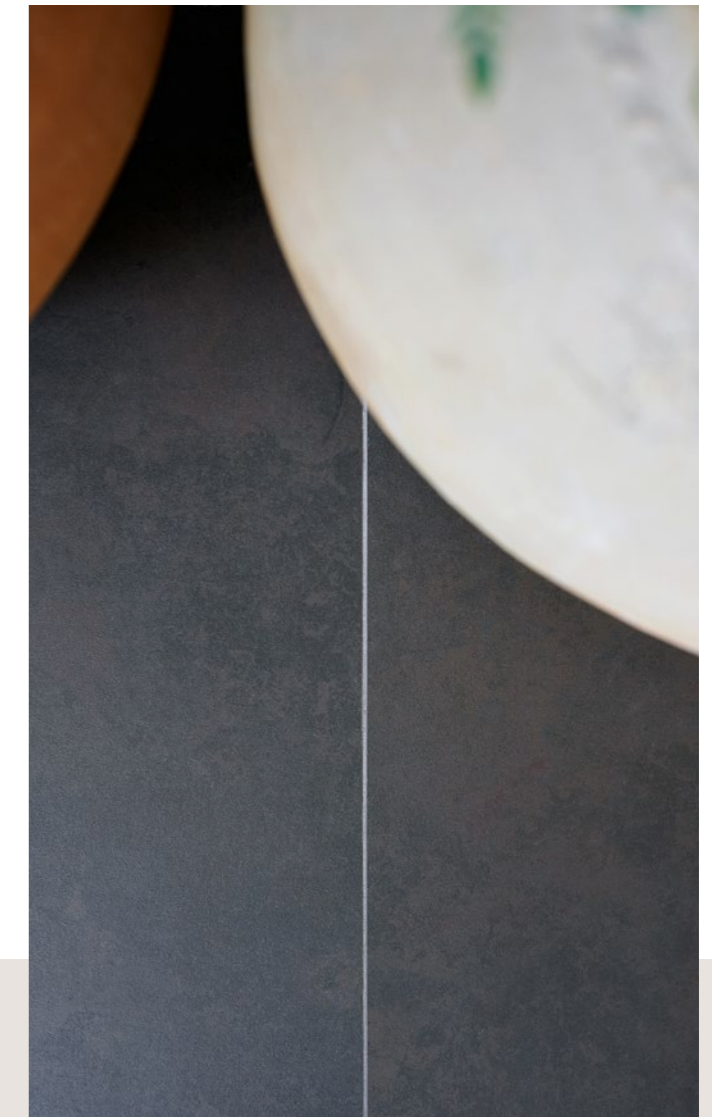
Limitless customization

Designing a living room with high aesthetic value requires versatile surfaces in a variety of colors, textures, and unique chromatic palettes, such as Dekton and Silestone, which will cover floors, furnitures, cladding, and more, to create an integrated and differential interior design experience.



Resistance to high traffic

Dekton® is an innovative surface with a high level of resistance, capable of withstanding high temperatures, ultraviolet rays and any scratches. It remains unalterable to wear and abrasion, as a result of the high daily traffic in a room such as a living room.



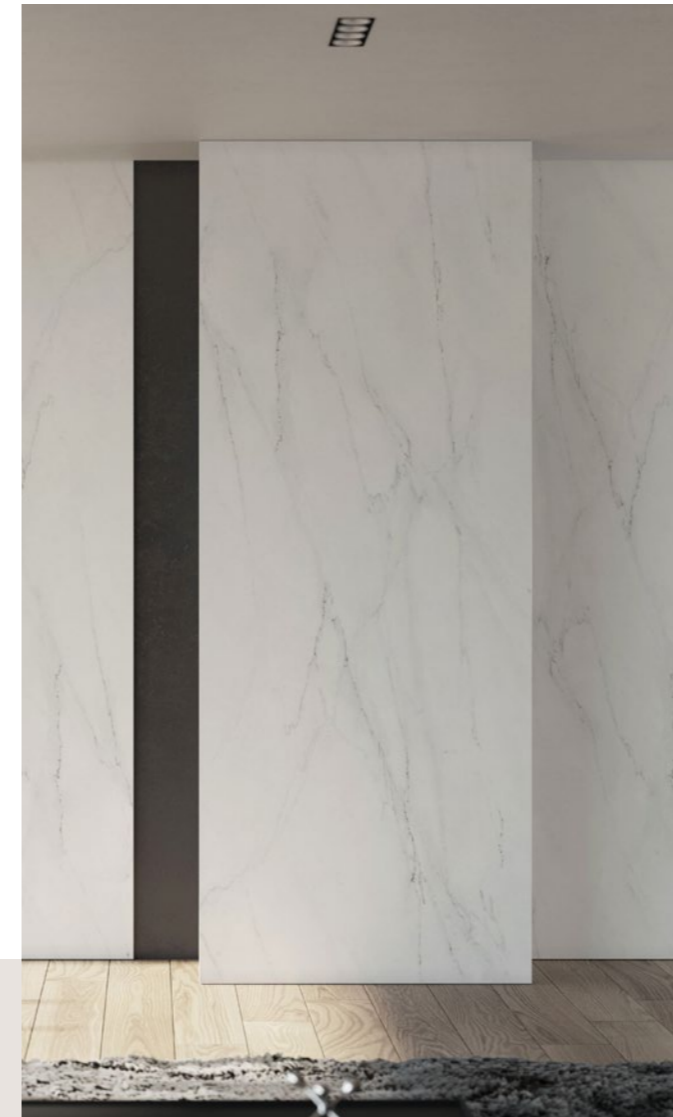
Easy installation

Dekton® is offered in a Slim format which is light, easy to cut, and adaptable to every space. Its thin thickness of 4mm allows adjustments to be made during installation, using tools for ceramic tiles.



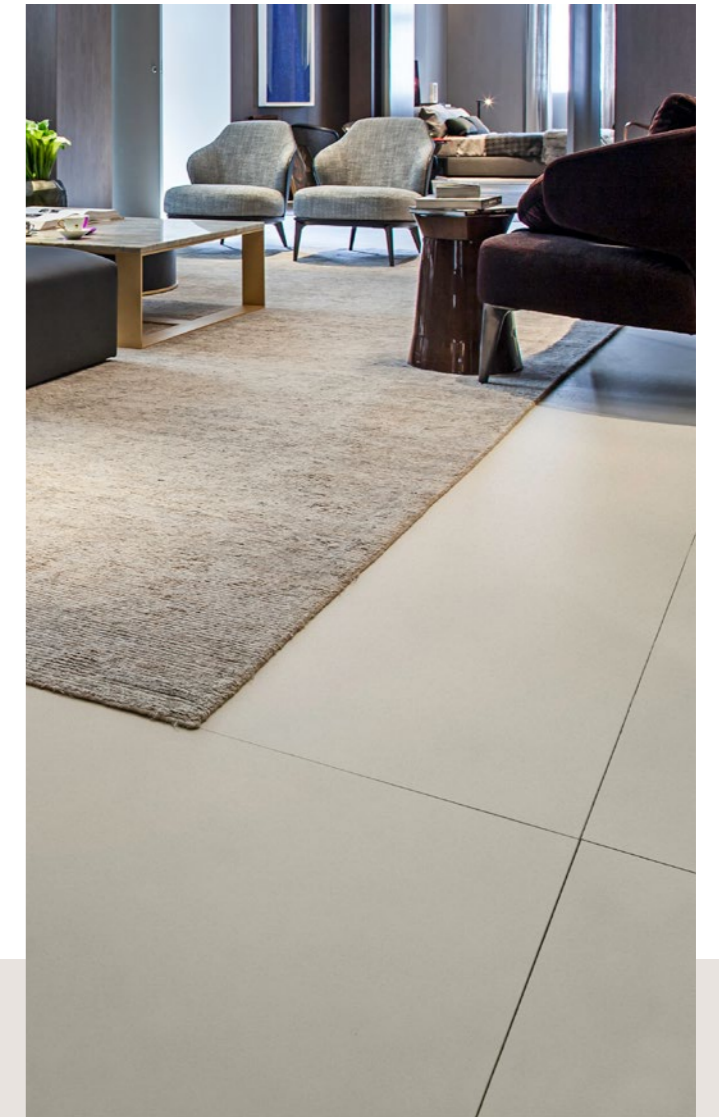
Comprehensive solution

The same material for flooring, cladding, and furniture created visual continuity and high aesthetic impact, unifying spaces and increasing their functionality.



New Dekton® Optimma Format

Dekton® has been optimized for interior cladding. The Optimma format (2600x1000x4 mm) allows for cost efficiencies, more design possibilities and easy installation and manipulation. The results: impactful cladding and integrated spaces.



Large format, minimal joints

Dekton® Slim's large format up to 3200 x 1440 mm and thickness of 4 mm allows you to cover large surfaces creating a continuous and homogeneous aesthetic for cladding and furniture. This size reduces the number of joints, easing cleaning and maintenance.

Live your space



01/ Living Space

Spaciousness,
brightness and
visual continuity.

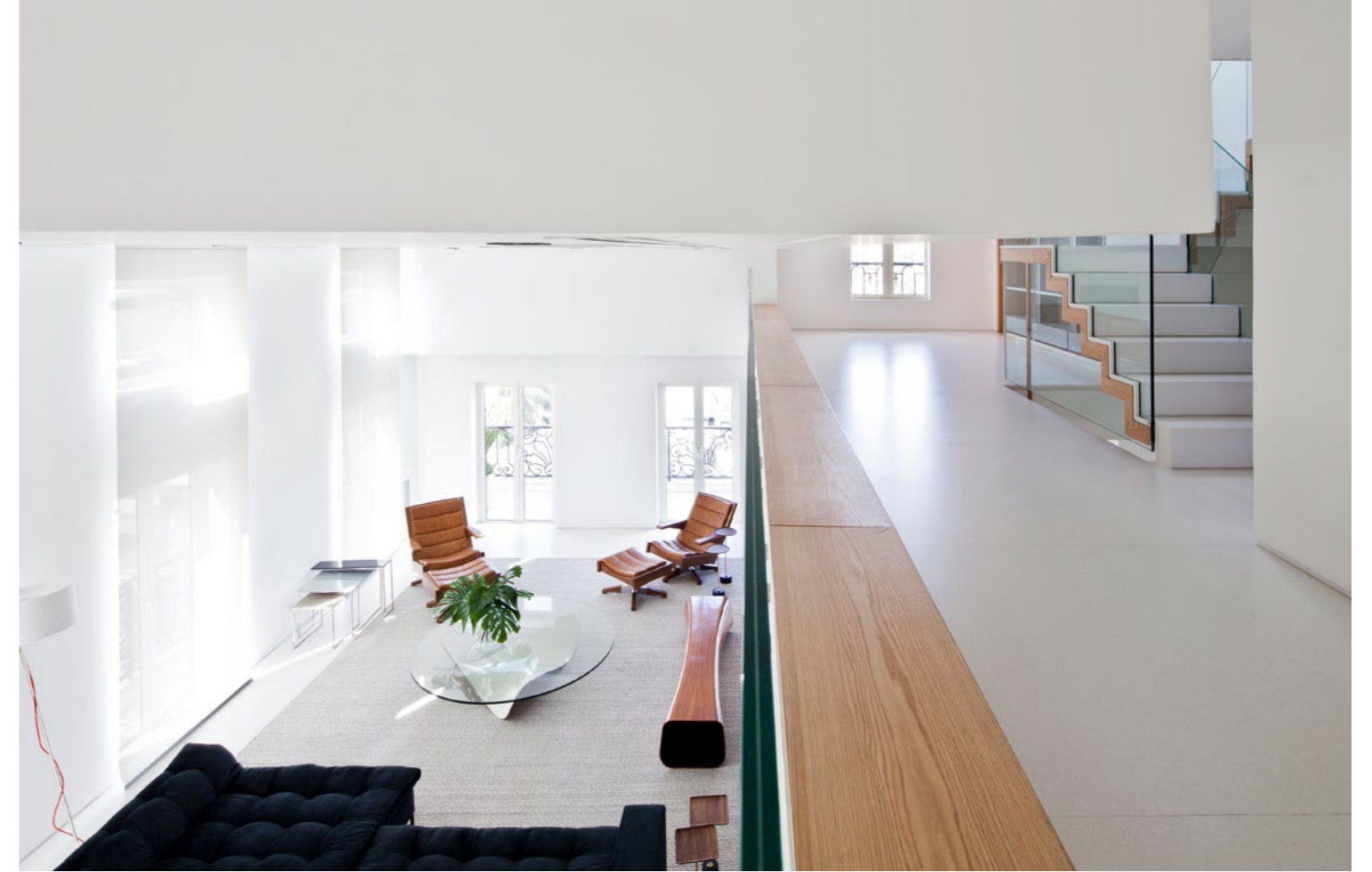
**A single flooring material
for the whole house.**

Goal: to create an attractive continuous
canvass, without joints, that adds visual
unity and highlights the greenery and
furniture of the space.

To achieve this, Silestone® Blanco Zeus,
has been used, which provides continuity
throughout the home. The walls and interior
woodwork, also in the same white color, help
to create a bright, calm and balanced space.

Architecture
Mariana Andersen and
Mariana Guardani

Photography
Maíra Acayaba



Continuous spaces all in the same material.

The pure white of the Silestone® flooring contrasts with the warmth of some of the wooden furniture, such as this sideboard and the dining table.

A clean, neutral background highlights the artwork in this loft and the greenery of the home. A beautiful yet practical solution that will stand the test of time.



Set of horizontal planes.

As this is an open-plan area with a split-level living room, the use of the same flooring material, combined with the appropriate use of glass, provides harmony and balance to the space.

→ Flooring
Silestone® White Zeus



02/ Living Space

High-rise city
apartment.

**A modern, functional
grey canvas.**

In this city apartment, the interior designer has opted for a light grey Dekton® Keon cladding in a large square format. The choice of this material is perfect for making the space look bigger and giving it visual continuity.

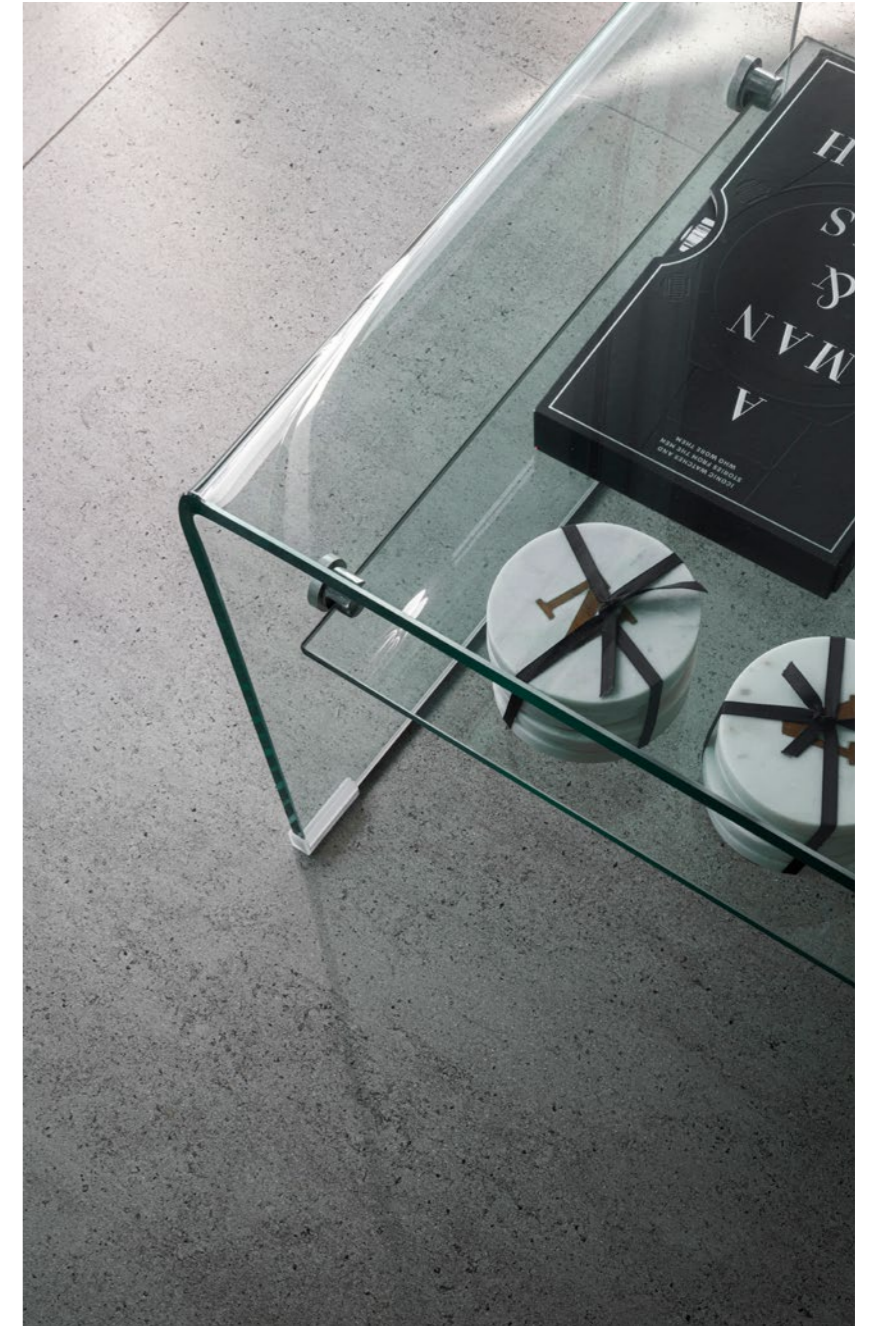
The grey flooring goes well with the industrial-style furniture and the fabrics of the sofa. All in all, a simple design that will stand the test of time.

—
Architecture
Cosentino

Photography
Francisco Carrasco

→ Flooring
Dekton® Keon





Tropical wood on a large-format grey background.

The coldness of grey and white is balanced by subtle hints of reddish wood in the dining table and chairs, the floor lamp and the sofa legs.

The choice of Dekton® Keon flooring is perfect for this practical and stylish city apartment.



03/ Living Space

Warm, natural
shapes with a
white foundation.

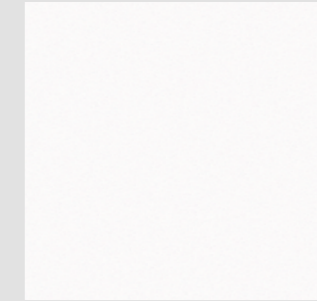
Extra-gloss white.

In this kitchen, many of the fashionable elements, such as terracotta colours, curved shapes and wooden wall panelling, have been used to create a cosy and very personal space.

This organic and somewhat 'tropical' decorative style requires a light and soft foundation that creates a continuous surface, as if it were a large canvas. Dekton® Halo is the material used to achieve this effect. The Halo colour from the Solid Collection, with its XGloss finish, offers a luminous, crystalline shine that is perfect for highlighting the entire design project. In this case, it complements furniture with clean, functional lines, up to the ceiling and without handles.



→ Island kitchen, Silestone® Iconic White



→ Worktop kitchen, Dekton® Laurent



Worktop and bar perfectly combined.

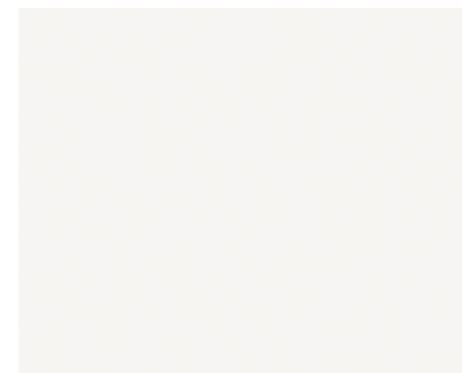
The designer has chosen Silestone® Iconic White to clad this impressive island, creating an impressive totem effect, as if it were a large piece of marble. Contrasting with this is the overhanging bar in Dekton® Laurent, an interesting black material with clay-coloured veins that visually 'engages' with the wooden wall panelling and the leather chairs. Thus, the worktop and the bar blend perfectly together, each with its own identity.



Infinite surfaces.

The feeling of a continuous surface is achieved by using the same material for the floor as for the kitchen units. Dekton® Halo XGloss is once again present on the floors, in large format and with greater thickness: the luxury of being able to choose the same product for different applications.

→ Dekton® Halo XGloss



04/ Living Space

Trendy blue
and grey.

**Large format for an
impressive living room.**

This magnificent living room is striking, first of all, because of the size of Dekton® Aeris floor tiles.

This large format continues with the wall cladding. In this project, the interior designer has chosen polished marble for the tops of the coffee and dining tables (see image below).

In short, a combination of materials and noble stones, in different finishes and textures (with and without shine), makes the home very stylish.

The color is achieved by small hints of Klein blue in cushions and pictures.

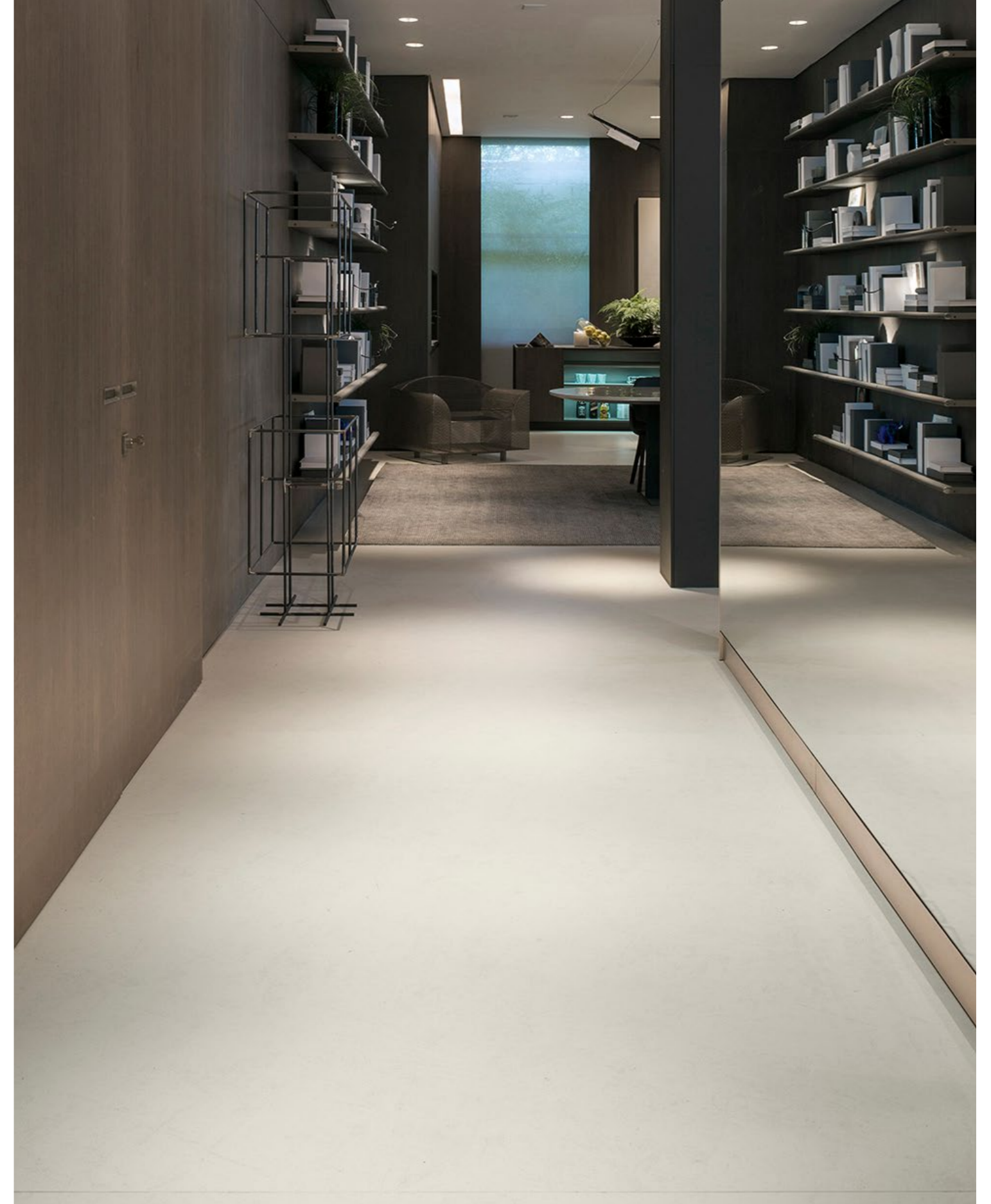
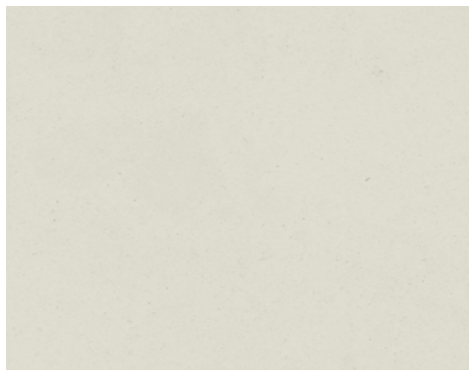




Matte and shiny.

The designer chose the beautiful beige Dekton® Aeris for the flooring. The vertical cladding in the rest area is in shades of brown. So far, everything is fairly even and matte. In contrast to this, the top of the dining or study table is in shiny Dekton® Splendor from the Solid Collection.

→ Flooring
Dekton® Aeris





05/ Living Space

Large format for
living spaces.

**Functionality
and beauty.**

In this coastal home, the floor is a large surface area that provides a view of the sea. Simple, clean, practical and large-format material, Dekton® Strato provides a balanced urban character.

Easy to clean, virtually seamless and in a very neutral color, this flooring is the ideal solution for a busy summer house that requires maximum resistance.

—
Architecture
Jano Blanc

Photography
Adrián Chambre

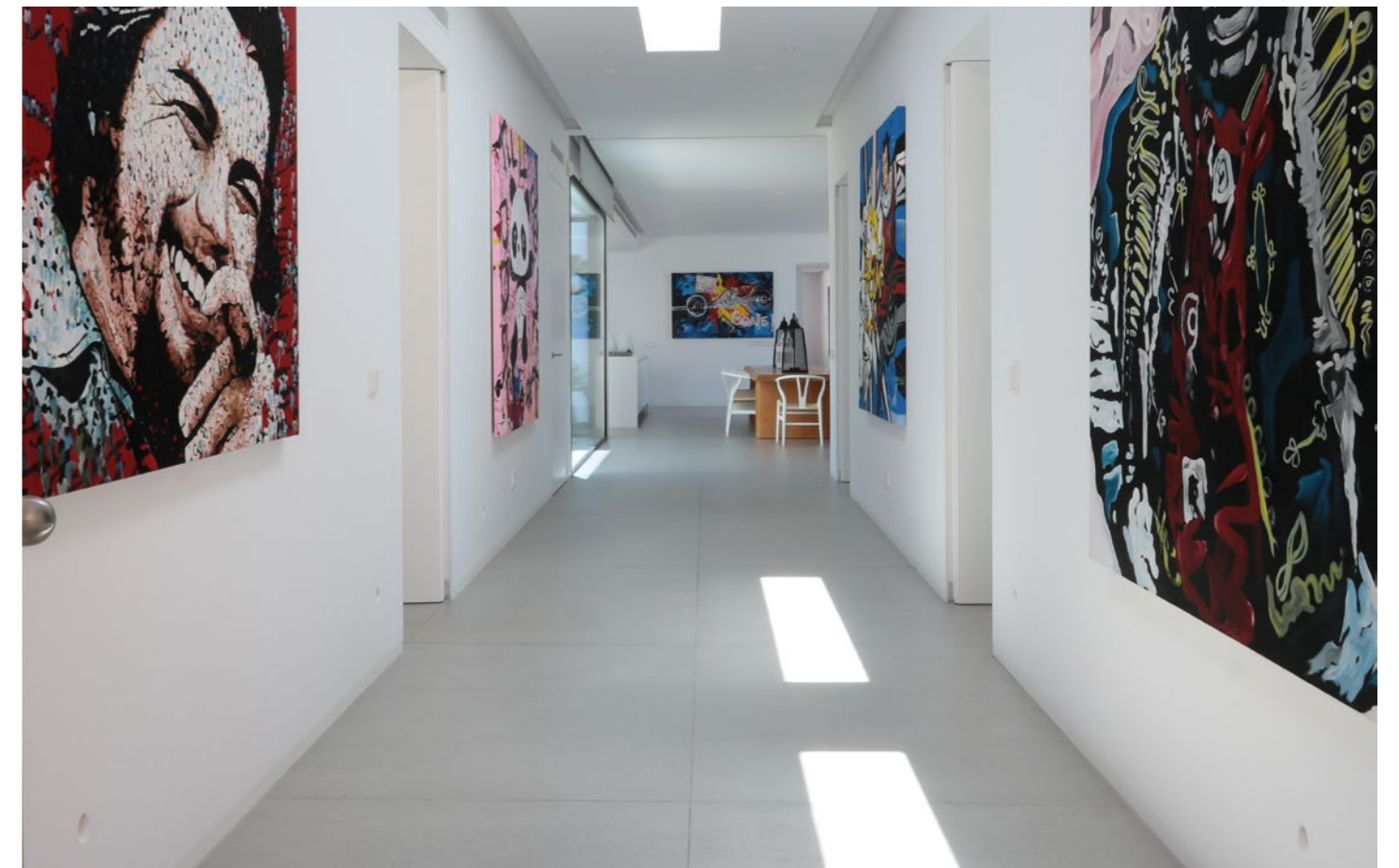


White worktop.

The **Silestone® White Zeus** worktop and the glossy white lacquered kitchen units are perfect for a coastal home – they provide brightness, cleanliness and tidiness.

The Mediterranean white contrasts with the wooden floor and dining room. Artwork throughout the rest of the house adds colour and personality to the space.

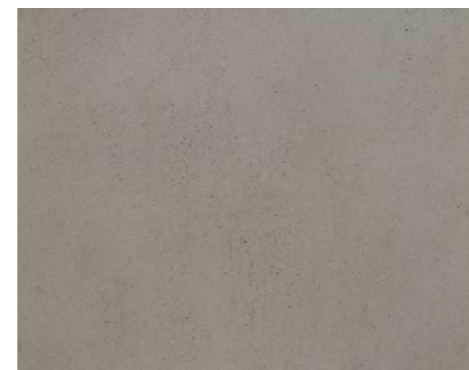
It is a beautiful blank canvas that can be finished off with designer furniture and pictures.



→ Kitchen worktop
Silestone® White Zeus, Polished finish



→ Flooring
Dekton® Strato



06/ Living Space

Materials with character for an eclectic home.

Grey veining is on trend.

The vision for this very distinctive home was clear: the owner was looking for a vibrant material with uniqueness so that each piece would be different. Although large-format Dekton® Kreta slabs are used to create a continuous space, Dekton® Bergen was chosen for the worktop and the side cladding of the furniture, with its grey veining giving a sense of movement.

The same material can be found in the staircase and the skirting board, bringing together the different spaces.

—
Architecture
Muxacra Arquitectos

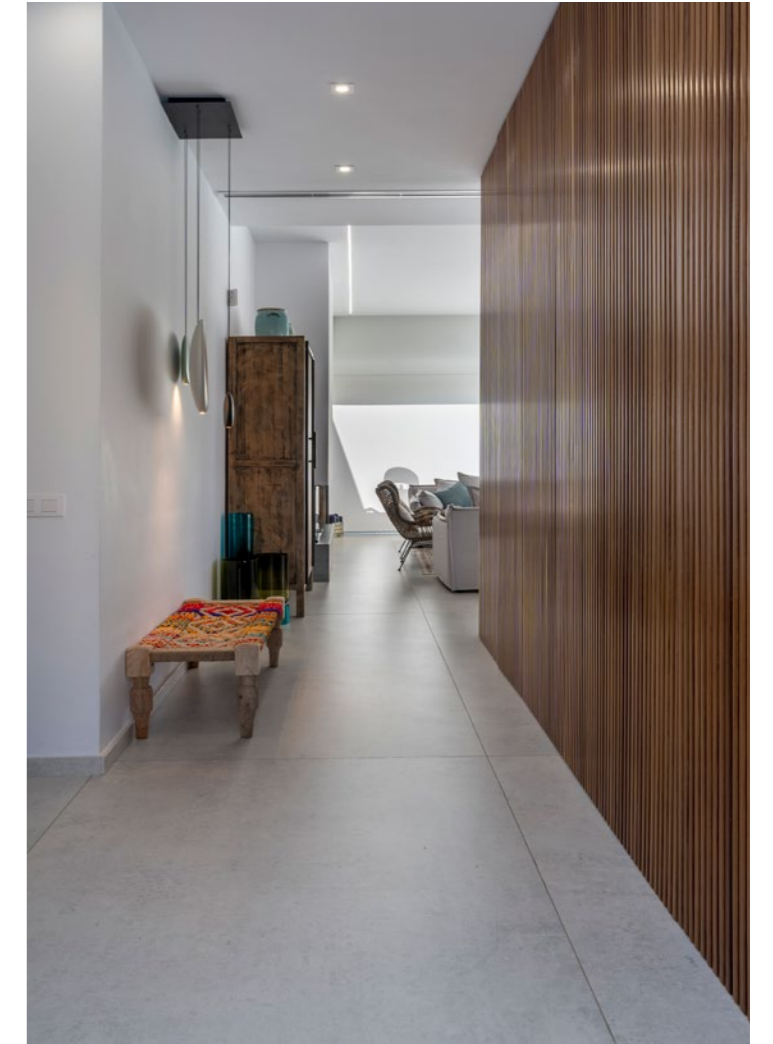
→ Flooring
Dekton® Kreta





Matte texture.

Dekton® embraces a velvety texture. The matte finish provides a flat, non-rough surface, which conveys a unique soft and pleasant feel.



Large format Dekton® Bento is an ideal solution for flooring in open-plan spaces. It brings visual continuity, neatness and a neutral decoration to combine, as in this case, with wooden wall panelling or white lacquered interior woodwork.

→ Flooring
Dekton® Bento





07/ Living Space

Sophistication
and mid-
century style.

**Dekton® Danae
throughout the home.**

For a classic look, the interior designer for this home opted for designer items such as lamps, armchairs and chairs.

Dekton® Danae, a surface inspired by traditional travertine, helps to blend all the spaces and helps to make the furniture stand out.

Thanks to its large format, the result is a continuous floor in a cream, bright and matte tone with hardly any joints.

Architecture
José Poveda Rivera

Photography
Alberto Rojas

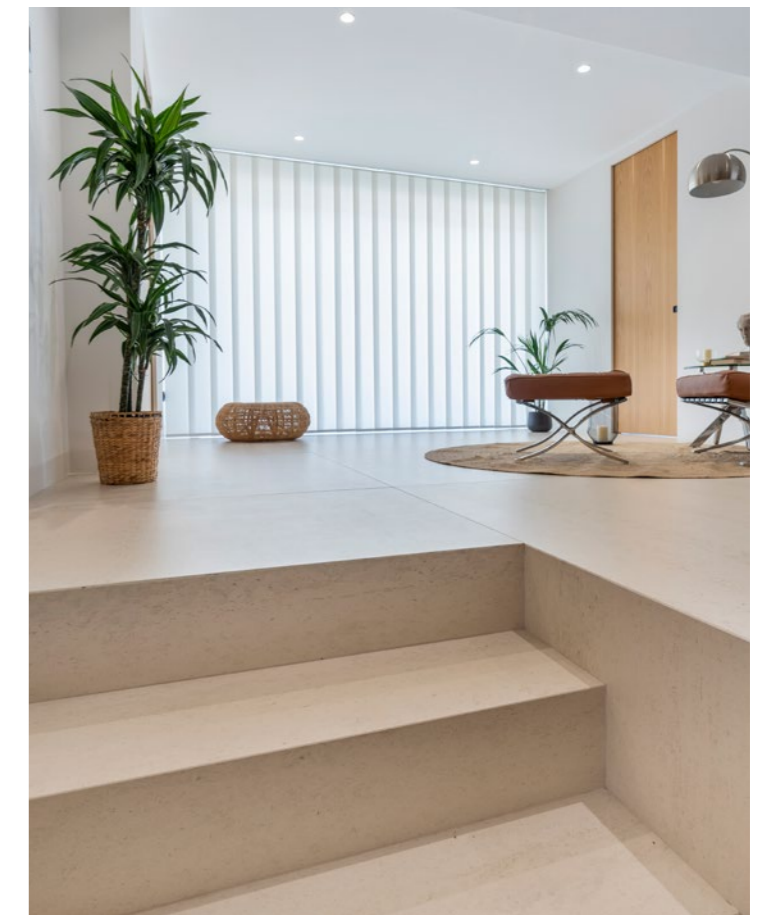
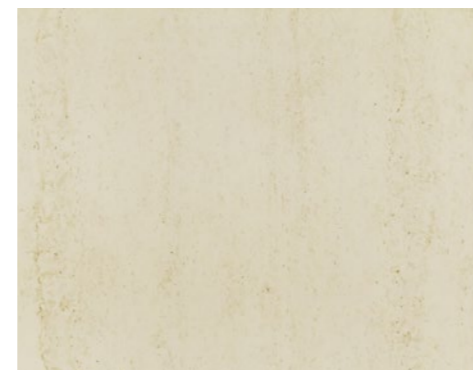


A format for every space.

The designer of this home has used large-format Dekton® Danae slabs for flooring. This creates a very neutral and uncluttered effect, helping to highlight the designer furniture, such as the Barcelona chair.

The staircase allows for a different format, giving the impression of floating in space.

→ Flooring
Dekton® Danae



08/ Living Space

Reinventing
classicism.

**Ochre color range
with iron and glass.**

In this living room, the designer's aim was to maintain the classicism of dark wood and mustard velvet armchairs together with a modern cantilevered iron and glass staircase. This results in a seamless look thanks to the color balance provided by the large-format Dekton® Danae flooring.

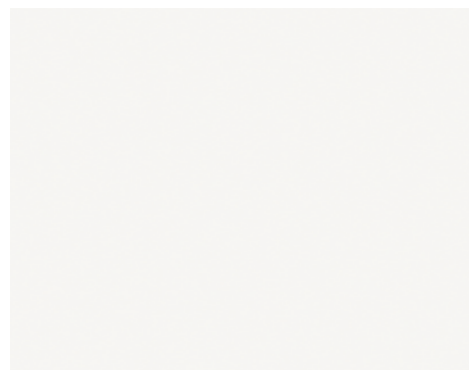


—
Architecture
José Poveda Rivera

Photography
Alberto Rojas



→ Kitchen worktop
Dekton® Zenith



→ Flooring
Dekton® Danae



The kitchen, which opens to the living area, was designed in a material which matches perfectly with the matte white lacquered furniture. A Dekton® Zenith worktop was chosen to create a consistent and appealing effect on the central island.

The use of two shades that go so well together, such as Dekton® Danae and Dekton® Zenith, allows for endless creative possibilities, from the most classic to the most ground-breaking designs.



09/ Living Space

Cladding to
connect spaces.

**Color depth and
fine veining.**

Silestone® Charcoal Soapstone was selected for the wall cladding of the living room, the island and the kitchen fronts. With its fine white veining, it creates an elegant color contrast to the ensemble.

Architecture
Gustavo Martins Arquitetura

Photography
Denilson Machado

Wall cladding for a niche.

The versatility of Silestone® allows the slabs to be cut to the desired size and to suit every need.

This project features a TV niche, using a different type of cladding and its own lighting, helping to create a contrast.

A further advantage of Dekton® and Silestone® wall cladding is that the designer does not need to fit a skirting board.



→ Wall cladding
Silestone® Charcoal Soapstone



Simplicity and elegance.

The combination of these two white and dark grey veined materials results in a simple and elegant look. Wooden pieces of furniture, hemp rope and a set of candles add some warmth to the space.

10/ Living Space

Rediscovering
the connection
between outdoor
and indoor spaces.

Living rooms which flow outdoors.

The architect of this project aimed to create a contemporary space, with large windows, in which the porch and garden blend in with the rest of the home.

Such visual continuity is the result of using large glass walls and the same material for indoor and outdoor spaces. The challenge is to find a beautiful yet practical surface which will withstand unfavorable weather conditions and remain unchanged over time.

The developer of this project found Dekton® Danae to be the ideal solution for integrating both spaces with a large-format continuous flooring.



—
Architecture
Andrés Oller- Arquivirtual

Photography
Alberto Rojas

Dekton® Kelya kitchen island.

Beige and black make up the color palette of this space.

For the kitchen island, the designer has opted for a material inspired by natural stone: Dekton® Kelya from the Natural Collection.

This material is available in a Slim format, with a thickness of 4mm, which is suitable for cabinet doors.

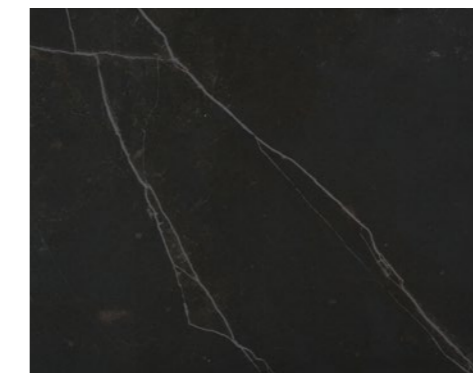
The sink unit, which is made of this material, fits in perfectly with the fireplace and the sideboard in the dining room.



→ Flooring
Dekton® Danae



→ Kitchen worktop
Dekton® Kelya



Natural look: travertine and black limestone.

The warmth of Dekton® Danae flooring contrasts with the power of the Dekton® Kelya worktop, inspired by a dark grey limestone with marked veins.



11/ Living Space

Natural sophistication
in living room cladding.

**Grey and beech wood
work together in this
Scandi-style space.**

Everything flows smoothly and in perfect harmony in Nordic and Scandinavian style. The off-white and grey colour range highlights the warmth of the light beech wood as well as the small splashes of colour, always in pastel shades such as pale pink, light blue and aquamarine. This is the key feature of this project – conveying brightness and harmony.

The combination of materials and the use of a veined wall cladding – Dekton® Opera – help to create a natural and tasteful feel.

—
Architecture
Mariana Pescara

Photography
Fábio Jr. Severo

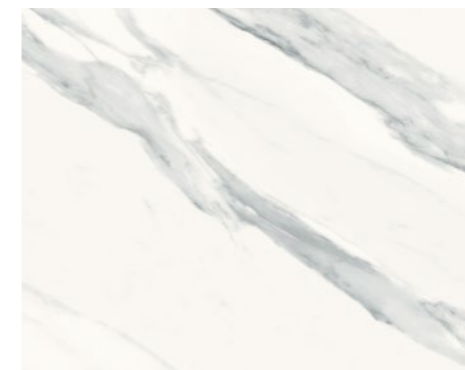
Pastel tones on a classic surface.

The cladding with the veiny Dekton Opera becomes the perfect canvas for these ceramic objects in different tones.

Over these grey materials, the warmth of the wall clad in wood in the dining room and the chairs with a Danish feel.



→ Wall cladding
Dekton® Opera



Natural inspiration.

Dekton® Opera is from the Natural Collection. It is inspired by traditional Carrara marble and offers a smooth touch which characterises the velvety texture of Dekton®.

A treat for the senses, its grey veining adds depth and beauty to this space.

Cosentino Bathrooms

Cosentino® helps you
to rediscover your
bathroom through a
unique and integrated
design concept.



Bathroom Space

Reimagine the most personal space in the home. Create a unique experience in which the most beautiful and functional Cosentino® surfaces transform unique, warm, and exclusive spaces.

From wall and floor claddings in different yet perfectly balanced formats, colors and textures, to attractive vanities and shower trays, carefully designed with great attention to detail and simplicity.

Solutions of great aesthetic and functional value to suit every requirement and style of bathroom, which redefine the way in which we experience such a personal space and feeling of well-being.



Large format

Large format, minimal joints. Tailor-made floors and wall cladding.

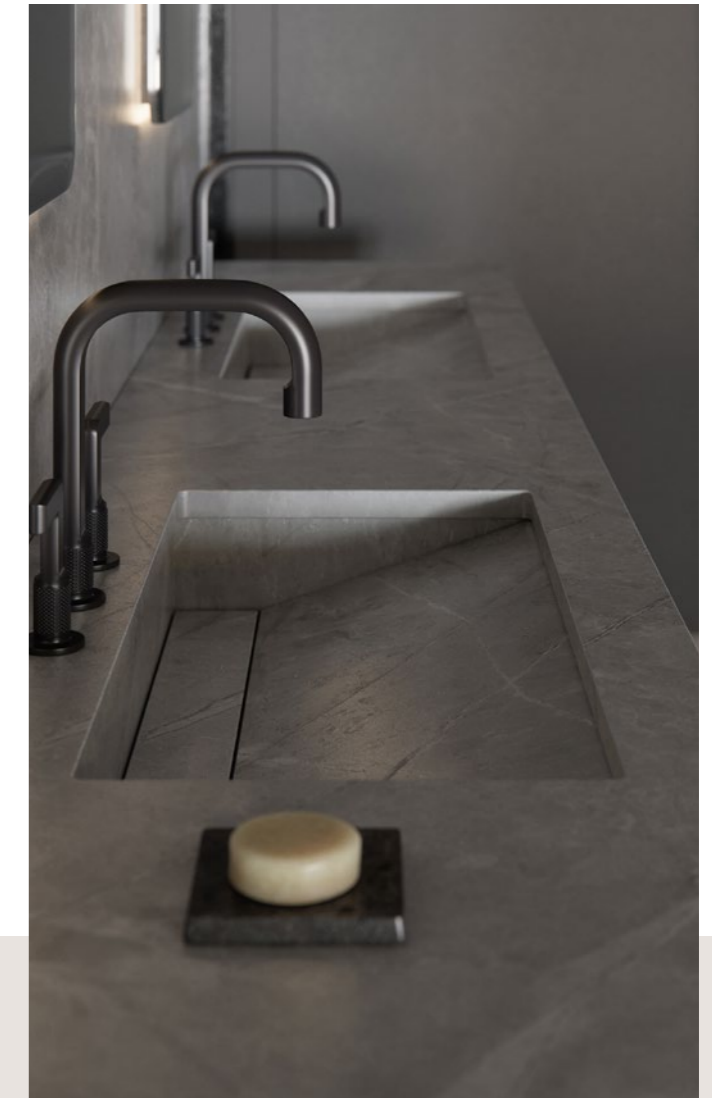
Bathrooms are exposed to constant activity. Using a high-quality surface for floors and cladding reduces joints and guarantees hygiene and cleanliness. The strategically placed slabs in XXL make the room look bigger, creating the sensation of a larger bathroom.



Shower Trays

Shower trays with Dekton® Grip+ and Silestone®: exclusive and integrated designs in the bathroom with limitless customization possibilities.

Cosentino® offers an extensive collection of shower trays in the material the architect or designer chooses and adaptable to any space. It is an interesting alternative to the traditional shower that simplifies installation and assembly.



Architect: Pedro Francisco
Interior design: Alexia Martínez

Sinks

Sinks and worktops with great versatility that adapt to any space. Sophisticated designs with maximum beauty and durability.

Silestone® sinks are built with a unique and innovative design able to live up to the most demanding creative proposals. From sinks that integrate into the worktop, to above-worktop options, double bowls...everything is possible with tailor-made fabrication.



Optimma Format

Dekton® Optimma Format. Optimized for interior bathroom cladding: taking full advantage of the space, easy installation, and design continuity in a vertical format.

The Optimma slab format is 260 X100 cm y 0.4 cm thick, able to meet any vertical cladding need creating a continuous design, taking advantage of the full height with easy installation and minimum waste.



Total Integration

Total aesthetic integration and visual continuity. The same material for your entire bathroom: floor, cladding, shower tray, and sink.

A single surface applied to every component of the bathroom allows for complete esthetic homogeneity, creating harmony, balance, and amplitude.



Colors and textures

New collections of innovative, on trend colors and textures, to create bathroom spaces full of originality and impact.

Innovative Silestone® and Dekton® surfaces possess a wide variety of solid and veined colors, unique chromatic pantones, and sensory textures to rediscover bathroom spaces.

01/ Bathroom Space

Minimalist Style.

Minimalist bathrooms, plain and bare: purity of lines, neutral colors and balance of shapes.

Surfaces blend harmoniously in with the space, creating a sense of well-being.





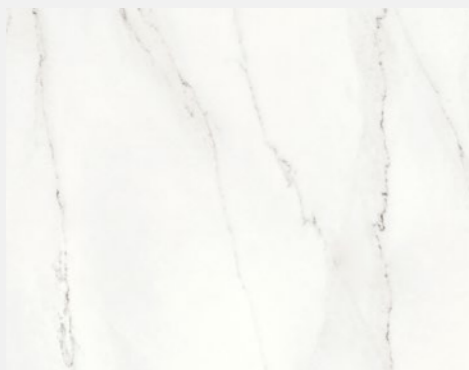
In a minimalist bathroom, shower trays and vanities come together in perfect harmony with horizontal and vertical cladding, all in the same material.

Dekton®'s most versatile interior cladding format, Optimma 260X100 cm, surrounds the Gocce shower tray, achieving the best result for a minimalist bathroom.

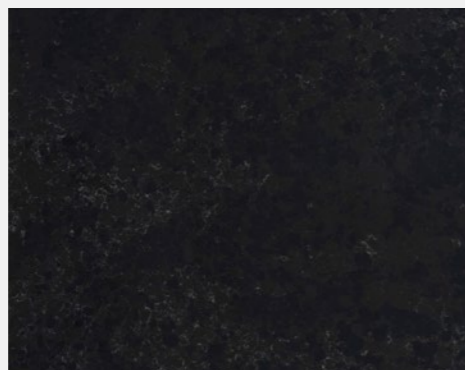
The wide, well-defined lines of the Silestone® Silence sink in Corktown colour (Loft Series), create a dramatic contrast against the Dekton® Rem cladding, a surface featuring a white background with brown and grey veins.

- 1→ Flooring and wall cladding
Dekton® Rem (Optimma Format)
- 2→ Bathroom worktop
Silestone® Corktown
- 3→ Custom shower tray
Dekton® Zenith
- 4→ Silence sink
Silestone® Corktown

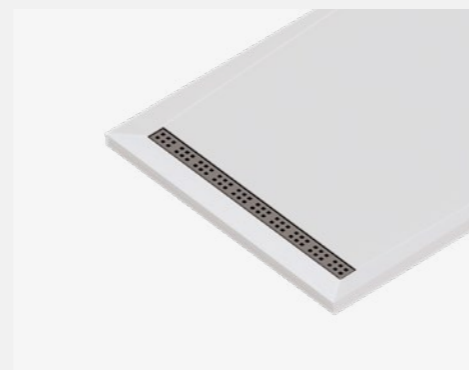
①



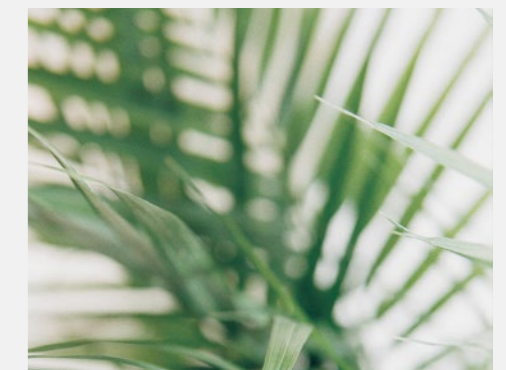
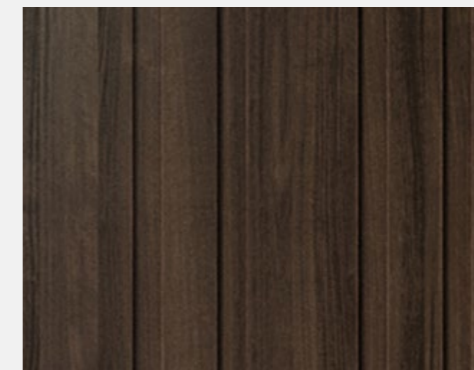
②



③



④





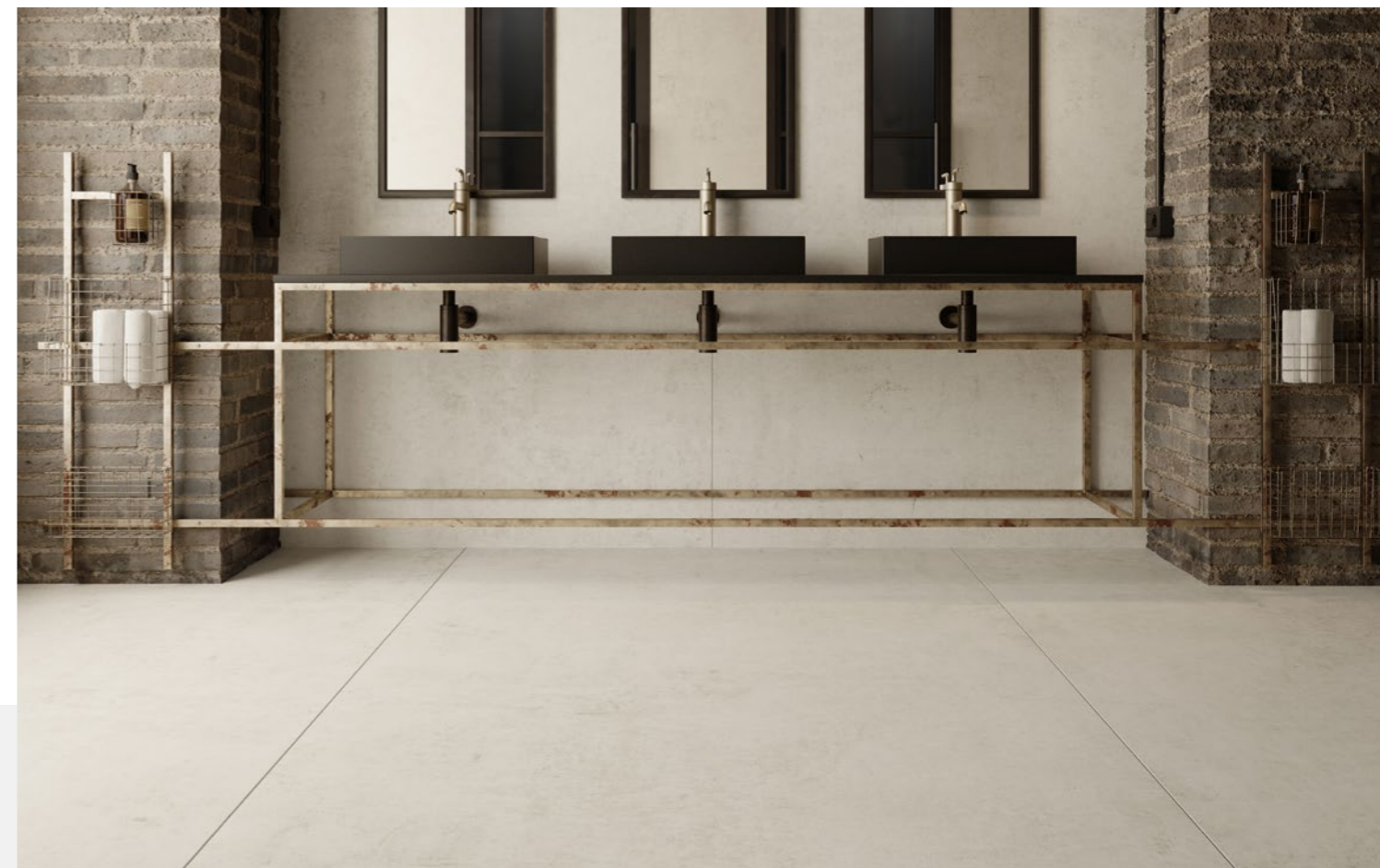
02/ Bathroom Space

Urban-
Industrial
Style.

Break with convention
and reinterpret the
industrial style bathroom
with a look inspired
by the great cities:
imperfect elements
and color patterns with
textures full of character.

Architecture
Pedro Francisco

Interior design
Alexia Martínez



Contrasting tones in a chic, industrial finish for your bathroom.

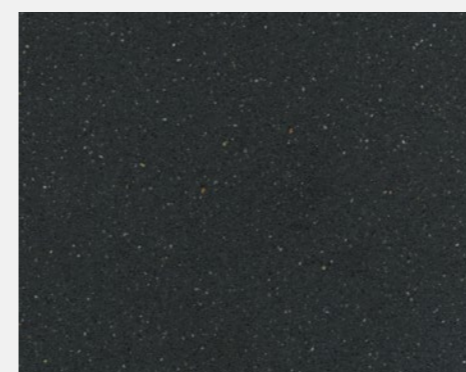
In this essentially urban bathroom, the designer used **Dekton® Liquid Embers** wall cladding, from the **Dekton® Liquid** collection. This material, which is reminiscent of volcanic magma, adds elegance and character to the project.

To achieve a more dramatic effect in this industrial style bathroom, the **Symmetry** sink by **Silestone®** has been used on a worktop of the same material, thus creating a perfect symbiosis with the wall cladding.

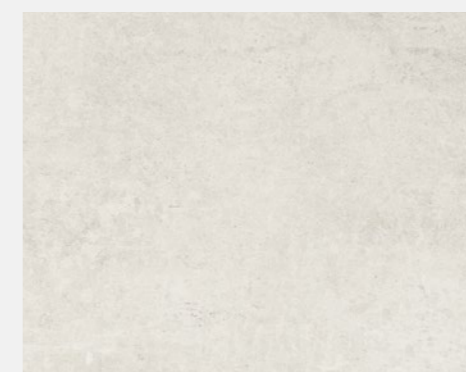
Matte chrome-plated taps, rust-effect sink profiles and black metal framed mirrors complete the scene, giving it a distinctly industrial effect.

In contrast, and to avoid an extremely dark finish, the interior designer has gone for a large-format floor in **Dekton® Lunar**, which adds that touch of concrete, typical in lofts and urban spaces.

①



②



Dekton Lunar: A reinterpretation of conventional cement inspired by industrial aesthetics. Its subtle structure over a White base tone make Luna a trendy color. The pattern and background merge perfectly.

③



- 1→ Floor and wall cladding Dekton® Lunar
- 2→ Bathroom worktop Silestone® Negro Tebas
- 3→ Symmetry sink Silestone® Negro Tebas

03/ Bathroom Space

Minimal style.

Highly decorative and impressive cladding, with the depth, brightness and shine of Dekton® X-Gloss Helena. The lines of the Kador Suite shower tray and the soft-angled Marie Top sink by Silestone®, blend together to create a harmonious bathroom.

- 1→ Kador Suite shower tray,
Silestone® Blanco Zeus
- 2→ Marie Top sink by,
Silestone® Blanco Zeus
- 3→ Wall cladding Dekton® Helena,
X-Gloss collection
- 4→ Flooring Dekton® Halo,
X-Gloss collection,

①



②



③





04/ Bathroom Space

Urban-
Industrial
Style.

Reinterpreting the
industrial style:
cement and veining
enjoy harmonious
interpretation.

Using a black and grey palette, the designer has created a timeless yet modern bathroom, in which two very powerful elements stand out: the grey floor with cement effects, in [Dekton® Kreta](#), and the monolithic-looking worktop, in [Silestone® Charcoal Soapstone](#).

—
Architecture
Pedro Francisco

Interior design
Alexia Martínez



Floor and wall cladding in the same material to unify spaces.

Inspired by the typical New York style loft without walls, the interior designer planned a metal and glass structure that also serves as the front of the bathroom.

A strong-looking half wall in the same material as the floor – Dekton® Kreta – is vertically integrated into this structure.

On the horizontal plane, the Silestone® Charcoal Soapstone worktop stands out. In total creating a very attractive contrast of planes and volumes.

In contrast, and to add a sense of lightness, the designer has opted for two beautiful and delicate Marie Top sink in Silestone® Blanco Zeus, featuring a round design.

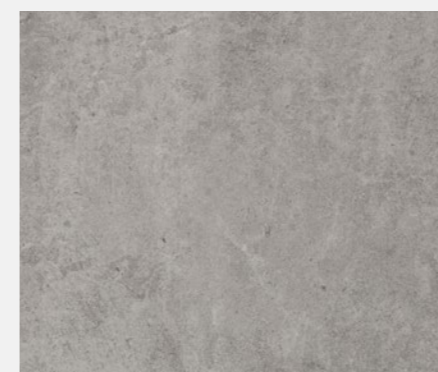
①



②



③



④



- 1→ Bathroom worktop
Silestone® Charcoal Soapstone
- 2→ Marie Top sink
Silestone® Blanco Zeus
- 3→ Tailor-made shower tray
Dekton® Kreta
- 4→ Floor cladding
Dekton® Kreta

A large-format, grey floor is always the right choice. In this project, the Dekton® Kreta material from the Industrial Collection provides a cement-like finish, ideal for an industrial or urban decorating style.

With its soft, rounded lines, the Marie Top sink is the perfect choice to place on the worktop. Although this project has a distinctly industrial look, its one-piece design, with no visible joints, enhances its attractiveness.





05/ Bathroom Space

Urban-
Industrial
Style.

Continuous surfaces for floor, vertical cladding, worktop and sink to create a flowing, unified space.

—
Architecture
Pedro Francisco

Interior design
Alexia Martínez

①



②



The uninterrupted surface of Dekton® Vera, used for floor, wall and worktop with sink, is the unifying feature in this bathroom. This material from the Natural Collection is reminiscent of polished cement, but also features long, delicate veins that run along the entire surface.

The impressive, straight-lined Simplicity sink, also in Dekton® Vera, is fully integrated into the worktop.



1→ Worktop, floor and wall cladding
Dekton® Vera
2→ Simplicity sink
Dekton® Vera

06/ Bathroom Space

Urban-
Industrial
Style.

All-black elegance
in an urban style
bathroom with a
vintage touch.

In this bathroom, black takes center stage through a design in which the cladding, sink and worktop work together to create a space evoking urban elegance.

Otherwise dominated by an urban style, black is used for the cladding, worktop, sink and mirror. The designer has also incorporated vintage details reminiscent of bygone times. These subtle touches, which can easily go unnoticed if you don't look closely - such as the carved mirror frame, the cruciform taps, or the herringbone floor - add personality.





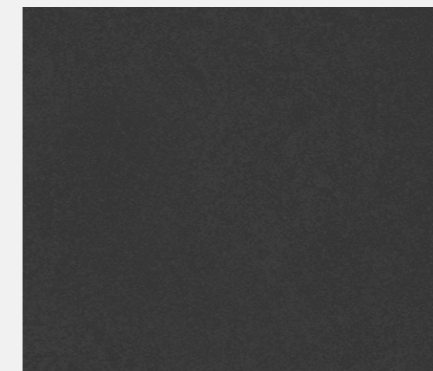
A personal, urban style with classic references and the most technologically innovative materials.

The designer has used large-format slabs in Dekton® Eter for the cladding, creating uninterrupted walls with almost no joints, thereby saving on cutting.

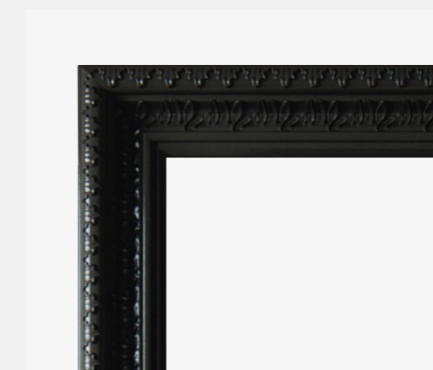
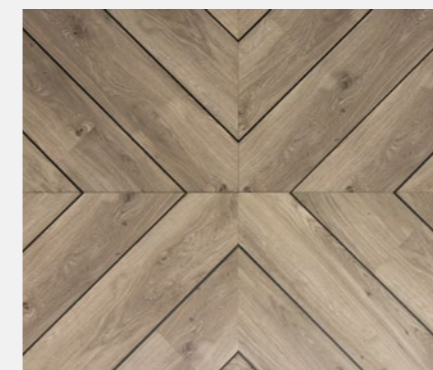
Dekton® Eter is part of the Natural Collection. It has the look of granite and works very well both indoors and outdoors.

The Symmetry sink, in Silestone® Iconic Black, is placed on the worktop, resulting in a very contemporary design. In contrast to the large worktop, its small size and arrangement, angled to the left, provides interesting asymmetry in the bathroom.

①



②



1→ Worktop and wall cladding
Dekton® Eter
2→ Symmetry sink
Silestone® Iconic Black

07/ Bathroom Space

Contemporary
Style.

A very personal design featuring classic materials, brought up to date with the most contemporary trends.

A white color with veins is the perfect background for any bathroom looking for a classic touch. For this reason, Silestone® Calacatta Gold, a white color featuring grey veins with golden nuances, was the material of choice.



—
Architecture
Debora Aguiar Architects

Photography
Denilson Machado



Large vertical and horizontal planes.

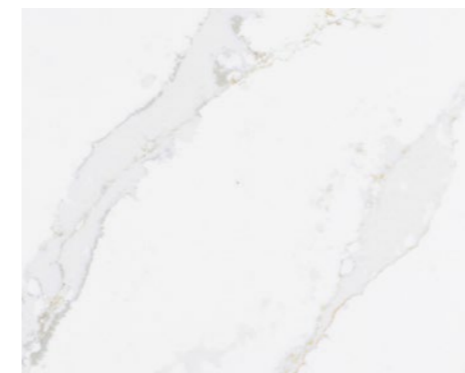
Contemporary design is fundamentally practical. In contemporary style, functionality comes first but without compromising on beauty.

In this bathroom, the interior designer selected a large shower enclosure, an extra large frameless mirror and spacious drawers for storage.

The designer also incorporated decorative elements, such as greenery, polished copper taps and a material reminiscent of Ancient Greek marble: Silestone® Calacatta Gold.

A huge bespoke bath in the same material takes centre stage in the room.

→ Floor cladding and tailor-made bath Silestone® Calacatta Gold





08/ Bathroom Space

Contemporary
Style.

An interesting use
of space and cream
tones result in this
contemporary
style bathroom.

Three vertical planes - mirror, sink and window
- in perfect contrast to the monolithic worktop
and the horizontal plane of the floor, in the same
material, achieve a spectacular result in this very
architectural bathroom.

—
Architecture
Pedro Francisco Architect

Interior design
Alexia Martínez



The coldness and abruptness of square shapes and vertical and horizontal planes is offset by the warmth of the materials used in the project.

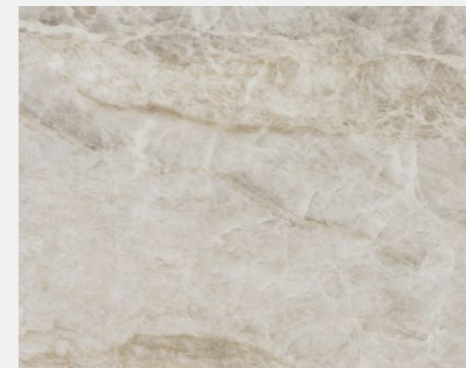
Inspired by the quartzite of the Taj Mahal, Dekton® Taga evokes the elegance and character of natural stone.

For the wall, the designer has chosen Dekton® Taga, a color embracing earth tones and caramel-colored veins: an evocative yet classic colour for such a modern design.

Dekton® Fossil, from the Natural Collection, has been used on both the worktop and floor, achieving an excellent result: a dark grey cladding that transports us back to the most ancient periods. This color is available in two formats, 320 x 144 cm and made to measure, which is very useful when it comes to cladding the horizontal planes of a space, such as the floor and worktop of this bathroom.

Finally, as if it were a huge totem, the sink has been custom-made in Silestone® Negro Tebas, with an attractive matt texture finish.

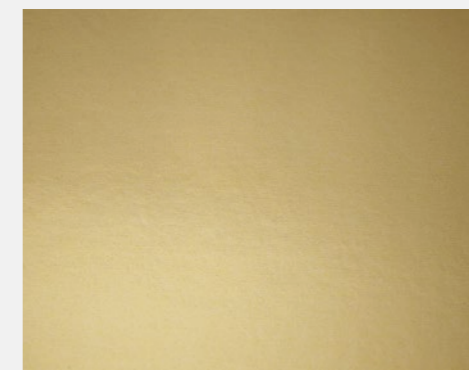
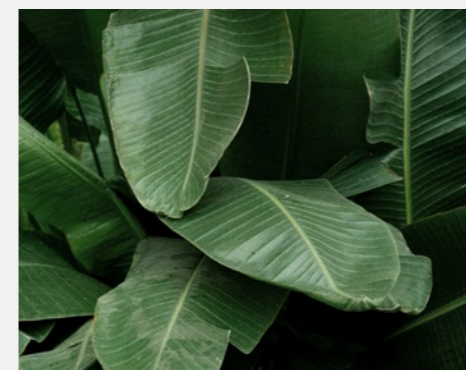
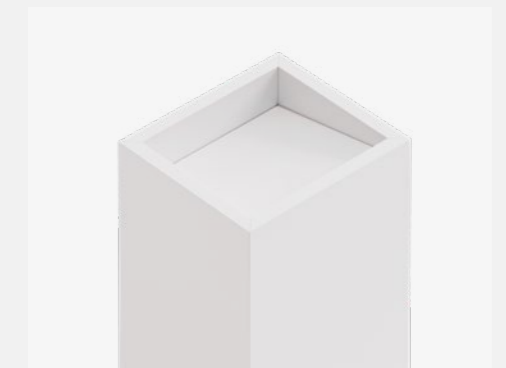
①



②



③



- 1→ Wall cladding
Dekton® Taga
- 2→ Worktop and floor cladding
Dekton® Fossil
- 3→ Tailor-made sink
Silestone® Negro Tebas

09/ Bathroom Space

Contemporary
Style.

This bathroom showcases a new interpretation of contemporary style.

Glossy white materials with marked veins work with touches of gold taps, cabinet profiles and trays to create a distinctive style, but without being overly flashy. The worktop in Silestone® White Zeus stands out for its brightness and clean lines.



—
Architecture
Mariana Pescara

Photography
Fábio Jr. Severo

→ Worktop
Silestone® White Zeus, Polished finish





10/ Bathroom Space

Contemporary
Style.

A revamped classic style for this bathroom with cream tones that exudes elegance and good taste.

Nothing has been left to chance in this bathroom. The result is a calm, peaceful atmosphere that invites relaxation.

To convey this feeling of relaxation and at the same time create a classic style bathroom, the interior designer has utilised a palette of cream tones and a well-balanced design of each element. The sink unit, wooden wall and the freestanding bath take centre stage and work in perfect harmony with each other.



The walls in Dekton® Entzo enhance the bathroom while adding a classic touch.

Dekton® Entzo is a material inspired by Calacatta marble. Featuring prominent veins in brown tones, this material brings life and personality to the bathroom and is the perfect companion for the worktop unit.



Neutral tones and subtle textures for each of the bathroom elements: personalized comfort for a unique experience.

The rest of the walls are clad in Dekton® Zenith, a more neutral material without veins.

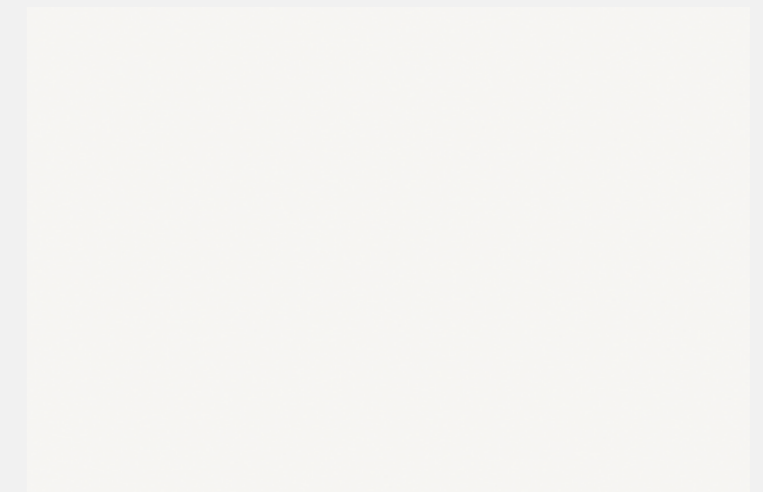
Finally, the floor features a geometric pattern, designed to emulate the floors of ancient temples. Here, the interior designer has combined Dekton® Entzo, Danae and Ventus, achieving an impressive result.

- 1→ Worktop and wall and floor cladding
Dekton® Entzo
- 2→ Shower wall cladding
Dekton® Zenith
- 3→ Floor cladding
Dekton® Danae
- 4→ Floor cladding
Dekton® Ventus

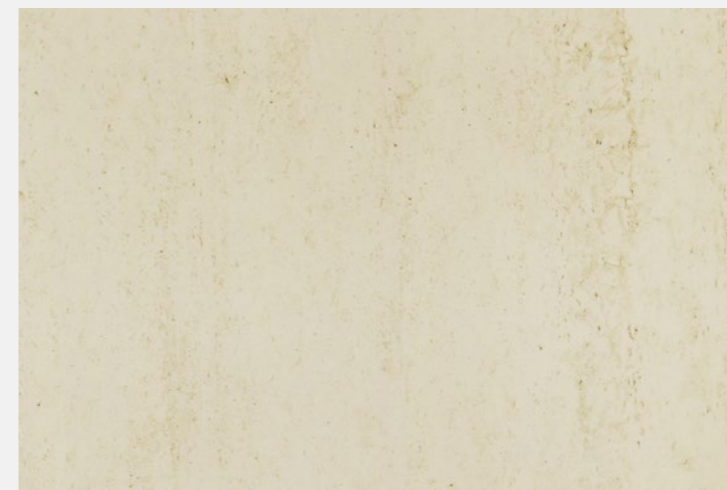
①



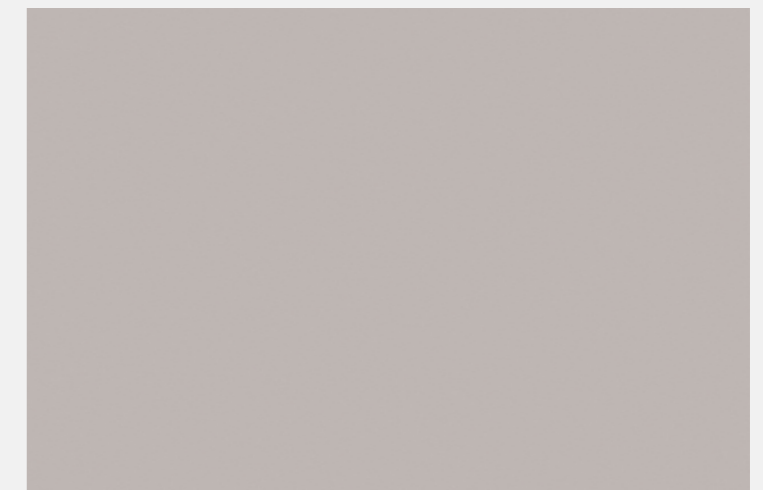
②



③



④



11/ Bathroom Space

Minimal
Style.

Functionality
and formal rigor:
less is more.

A suite with a bathroom and bedroom in one area.
For this project, the interior designer needed a
material that would both provide the required
sense of continuity while also working well in wet
areas. Thanks to the use of large-format Dekton®
Strato slabs on the floor, the two areas become one.



—
Architecture
Jano Blanco

Photography
Adrián Chambre



Neutral colors and simple lines are the key in this bathroom where everything has been carefully designed.

The second big success of the project is the matte white wall which separates the bathroom from the bedroom, and where the sink is situated. The sink, which is integrated into the worktop, features a cantilever design and a made to measure basin with the same width as the wall. Neutral colours and simple lines are the key in this bathroom where everything has been carefully designed.

This wonderful, extra-large and integrated sink goes by the name of Elegance and is available in all Silestone colours. In this case, the colour chosen was Silestone® White Zeus, which highlights the minimalist design of the space.

This practical and timeless bathroom is the result of combining clever design with two neutral and complementary materials.

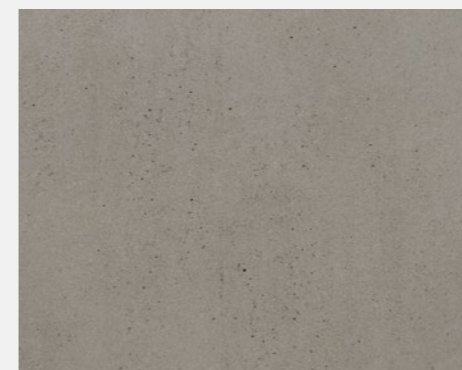
①



②



③



- 1→ Worktop
Silestone® White Zeus
- 2→ Elegance tailor-made sink
Silestone® White Zeus
- 3→ Floor cladding
Dekton® Strato



Integrity Sinks

Full array of products.

Sinks and worktops designed to adapt to any space.



Armony
The evolution of tradition makes this sink a key piece, bringing harmony and definition.



Available in a wide variety of colors.



Check available colors at [cosentino.com](https://www.cosentino.com)



Elegance

Silestone®

Basin 49 x 30 x 10 cm
 Length from 59 to 320* cm
 Width from 40 to 60 cm
 2 cm straight edge or 12.5 cm skirt



Reflection

Silestone® / Dekton®

Basin S 49 x 30 x 8 cm
 Basin M 90 x 30 x 8 cm
 Basin L 120 x 30 x 8 cm
 Length from 59 to 320* cm
 Width from 40 to 60 cm
 SI 2 o DK 1.2 cm straight edge or 12.5 and 16 cm skirt



Armony

Silestone®

Basin 49 x 30 x 10 cm
 Length from 59 to 320* cm
 Width from 40 to 60 cm
 2 cm straight edge or 16 cm skirt



Silence

Silestone® / Dekton®

Basin S 49 x 30 x 8 cm
 Basin M 90 x 30 x 8 cm
 Basin L 120 x 30 x 8 cm
 Length from 59 to 320* cm
 Width from 40 to 60 cm
 SI 2 o DK 1.2 cm straight edge or 12.5 and 16 cm skirt



Symmetry

Silestone®

Basin S 33 x 23 x 7 cm
 Basin M 38 x 25 x 7 cm
 Basin L 58 x 30 x 7 cm
 Length from 55 to 320* cm
 Width from 43 to 60 cm
 2 cm straight edge or 10 cm skirt



Simplicity

Silestone® / Dekton®

Basin 49 x 30 x 10 cm
 Length from 59 to 320* cm
 Width from 40 to 60 cm
 SI 2 o DK 1.2 cm straight edge or 12.5 and 16 cm skirt

* Sólo en tabla Jumbo

Integrity Sinks

Full array of products

Sinuuous, organic and linear shapes, made on hygienic easy-to-clean surfaces.



Marie
Three sizes in a design of round and functional encounters that combines technology, integration, and practicality.



Available in a wide variety of colors.



Check available colors at [cosentino.com](https://www.cosentino.com)



Marie
Silestone®

Basin Marie Top: 51 x 37 x 10 cm
 Basin Marie S: 34 x 37 x 7 cm
 Basin Marie L: 51 x 37 x 7 cm

 Length from 47 to 320* cm
 Width from 44 to 60 cm
 2 cm straight edge or 10 cm skirt (Marie Top) or 12.5 cm (Marie S y L)



Evita
Silestone®

Basin Evita S: 50 x 30 x 10 cm
 Basin Evita L: 65 x 30 x 10 cm
 Basin Evita Q: 51 x 41 x 10 cm

 Length from 60 to 320* cm
 Width from 40 to 60 cm
 1.2 cm straight edge or 12.5 cm skirt

H-Line Sinks

Different worktop and bathroom shelf solutions, with a modern and design adaptable to any need, adding sophistication to the bathroom space.



Urban porcelain overmount
Silestone® / Dekton®

Length from 45 to 320* cm
 Width from 46 to 60 cm
 1.2 cm straight edge or 10 cm skirt



Flex porcelain undermount
Silestone® / Dekton®

Length from 60 to 320* cm
 Width from 46 to 60 cm
 1.2 cm straight edge or 10 cm skirt

* Sólo en tabla Jumbo

Shower Trays

Full array of products

Six adaptable shower tray models in a variety of materials and finishes of Dekton® and Silestone®, suitable for any space in the home and technical requirements, no matter how complex.



Wakka

Silestone®

Length from 70 to 250 cm
Width from 70 to 150* cm

Wakka Brim

Silestone®

Length from 70 to 250 cm
Width from 70 to 150* cm



Kador Suite

Silestone®

Length from 70 to 200 cm
Width from desde 70 to 150* cm

Exelis

Silestone®

Length from desde 70 to 320*cm
Width from 70 to 150* cm

*Jumbo slab only



Available in a wide variety of colors.



Check available colors at [cosentino.com](https://www.cosentino.com)

Flooring

Tailor-Made and standard formats.

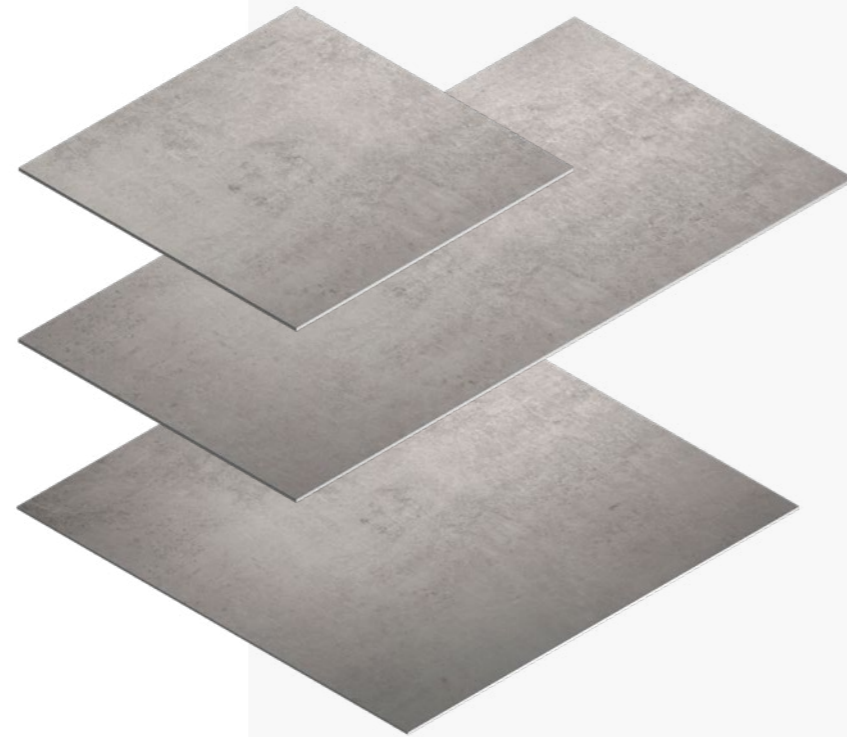
Achieve aesthetic continuity in the bathroom floor with standard format solutions or personalized ones of great resistance when faced with fluctuations in humidity and temperatures. Minimal jointing and maintenance-free.



Available in a wide variety of colors.



Check available colors at [cosentino.com](https://www.cosentino.com)



S Format

Dekton®
71 x 71 cm

M Format

Dekton®
142 x 71 cm

L Format

Dekton®
142 x 142 cm

HLine Bath tops

Horizontal and functional planes with straight lines created by Silestone® and Dekton® to create a variety of sophisticated sinks in the same material.



Available in a wide variety of colors.



Check available colors at [cosentino.com](https://www.cosentino.com)



Straight edge worktop

Silestone® / Dekton®
Length from 60 to 320 cm
Width from 30 to 60 cm
1.2 cm straight edge

Worktop with skirt

Silestone® / Dekton®
Length from 60 to 320 cm
Width from 30 to 60 cm
6, 10 ó 21 cm skirt

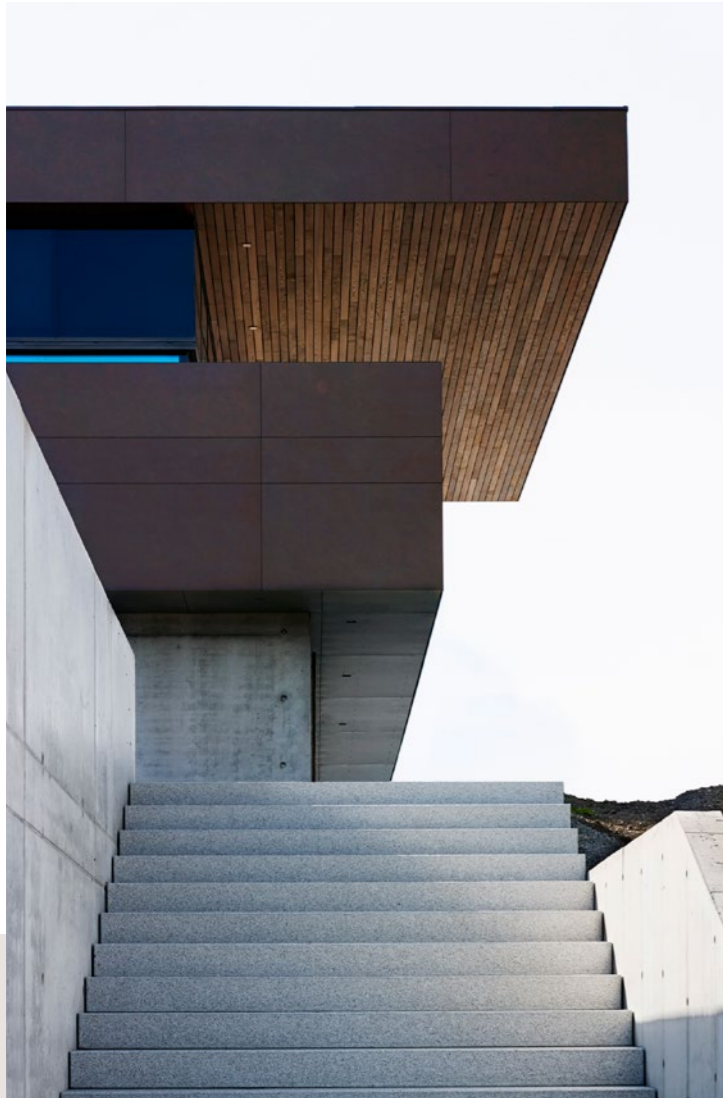
Cosentino Exterior Space

Beautifully continuous
and durable
outdoor spaces.

Redesign your
outdoor spaces to
include porches and
terraces that blend
in with your home.

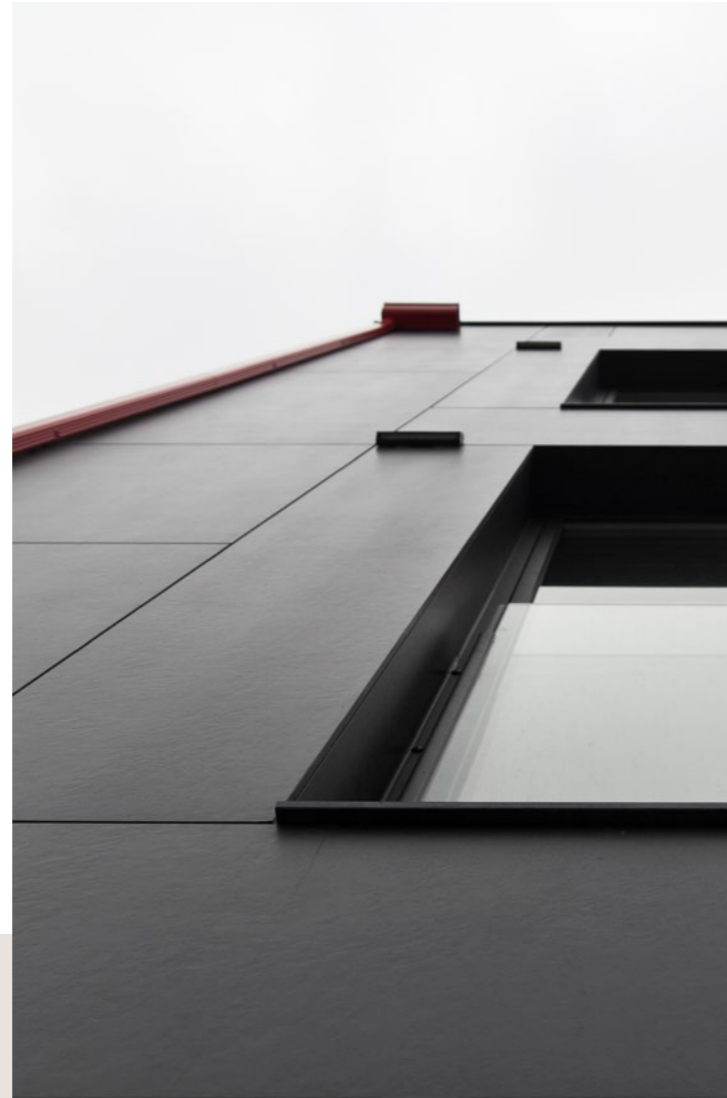


Exterior Space



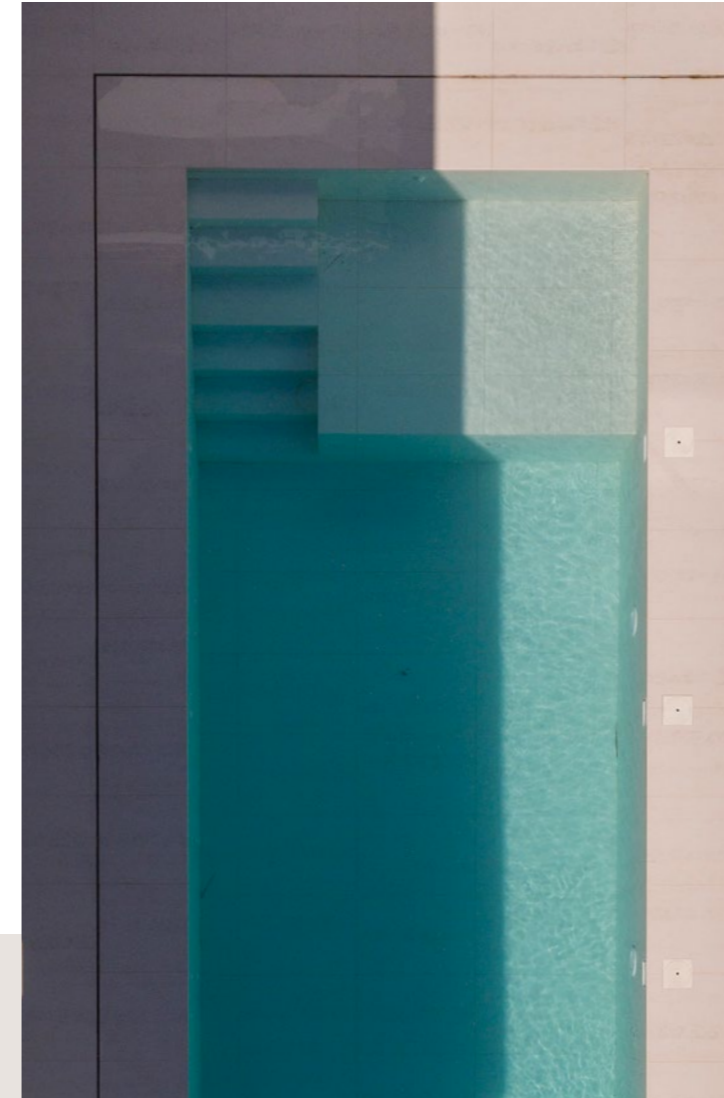
Customization without limits

Open spaces with freedom for inspiring, designing with a unique purpose: personalizing your outdoors spaces.



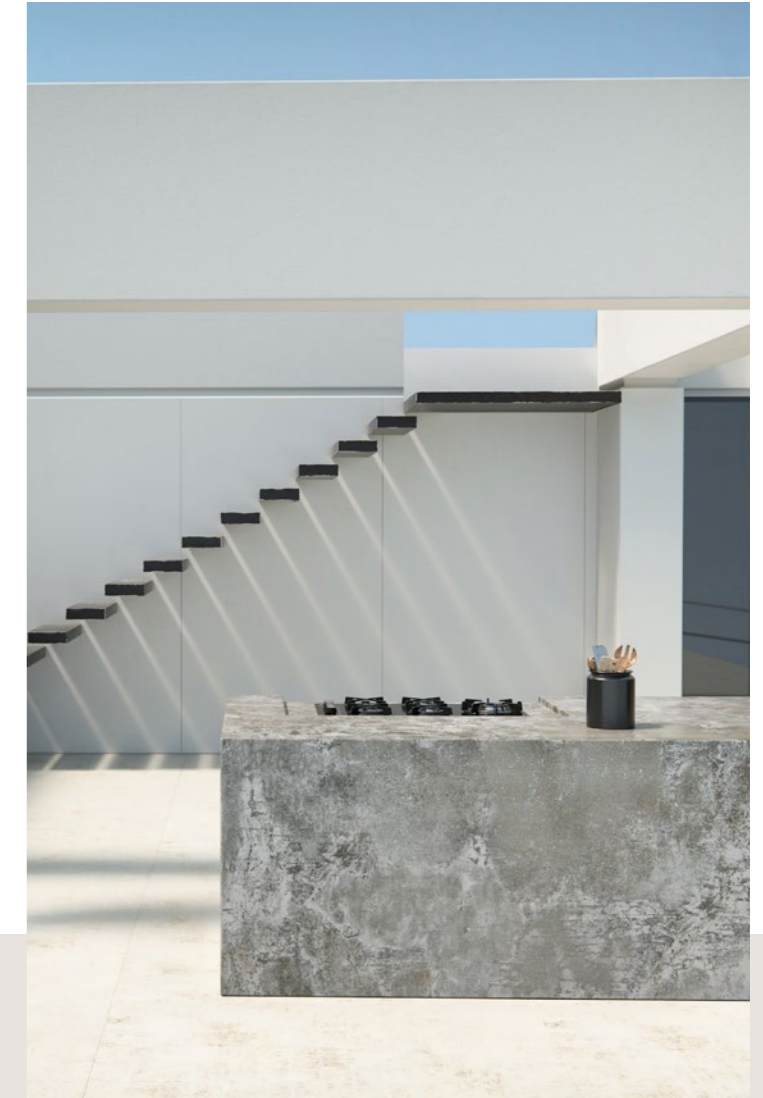
Easy installation

Dekton® is very lightweight, easy-to-cut and adaptable format.



High transit resistance

It remains unalterable faced with daily erosion and abrasion in outdoors spaces, used in terraces, stairs and pool surroundings.



Dekton® Outdoor Worktop

Dekton® outdoor worktop is resistant and durable. Innovative surfaces turn into functional and beautiful worktops.

01/ Exterior Space

Redesign your outdoor spaces to include porches and terraces that blend in with your home.

Beautifully continuous and durable outdoor spaces.

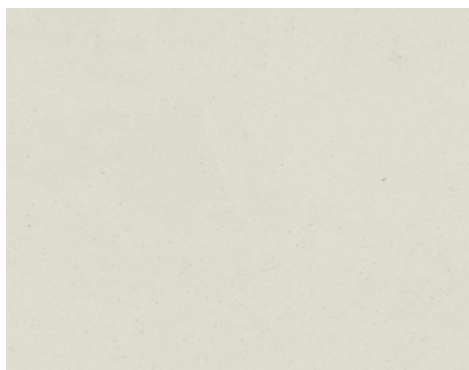
Outdoor areas such as porches, terraces or gardens have become the most precious spaces of the home. In the past, outdoor materials required annual maintenance and often lacked proper care. In addition to this, there was always a visible gap between indoor and outdoor flooring.

Dekton® redefines the experience of enjoying outdoor spaces by creating uninterrupted floors that continue inside. The exterior and interior become continuous, with almost no joints or maintenance, and will remain unaltered over time.





→ Flooring,
Dekton® Aeris



Dekton® Aeris is a material from the Natural Collection that features an interesting combination of beige and grey with a concrete-inspired look. It works very well on outdoor floors thanks to its 320 x 144 cm format. It can be fitted to a staircase, swimming pool, outside covered area, etc., and it can continue inside the home.

Dekton® Grip+ prevents slipping in outdoor areas when walking barefoot. In addition, it is highly resistant to stains, UV rays and temperature changes

Outdoor spaces with a concrete look.

A large-format natural foundation connects the porch or terrace with the living room; the material has the look and feel of concrete, but without its disadvantages – the end result is spectacular! The designer can find all these advantages in Tech and Industrial collections by Dekton®.



02/ Exterior Space

Sand and white
expanses with
Mediterranean
character.

**Visual
continuity.**

In this project, the architect designed a Mediterranean and up to date house with cubic volumes and modern floor plans.

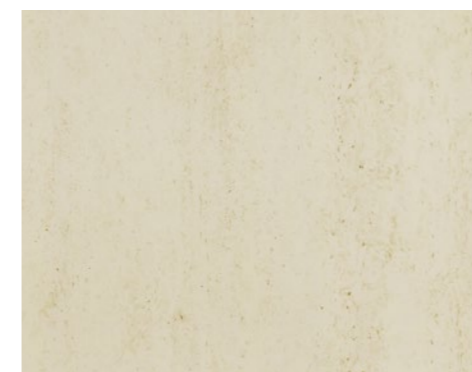
The Mediterranean style can be seen in the white walls, reminiscent of the whitewashed houses of southern Spain, and in the continuous large-format floor that evokes the seaside. A warm, durable and practical material that connects the terrace, porch and bathroom spaces.

Architecture
Andres Oller-Arquivirtual

Photography
Alberto Rojas



→ Flooring
Dekton® Danae



The warmth of Dekton® Danae.

Dekton® Danae from Natural Collection is a timeless material that blends perfectly into any space. Its limestone beige tone is reminiscent of sand.

It is available in 320 x 144 cm format, making it the perfect choice for flooring.

There are 5 thicknesses (4, 8, 12, 20 and 30 mm); ideal for worktops, furniture and wall cladding both indoors and outdoors.

03/ Exterior Space

Inspiring outdoor spaces that associate with local materials.

Functionality with a rustic touch.

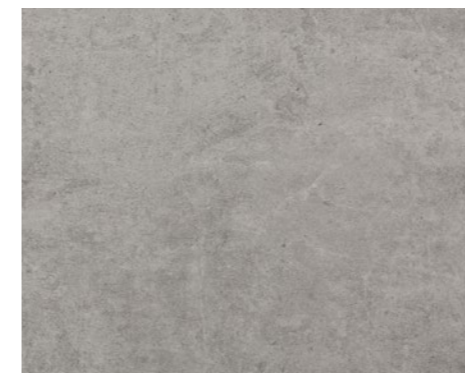
In this porch and garden project, the interior designer has renovated a house with practical and technologically efficient materials. This stylish renovation includes the use of Dekton® Kreta for the flooring and the replacement of the original windows with large glass windows.

These modern finishes fit perfectly with the stone masonry walls, terracotta pots and rattan chairs – all traditional materials with a rustic touch.





→ Flooring
Dekton® Kreta

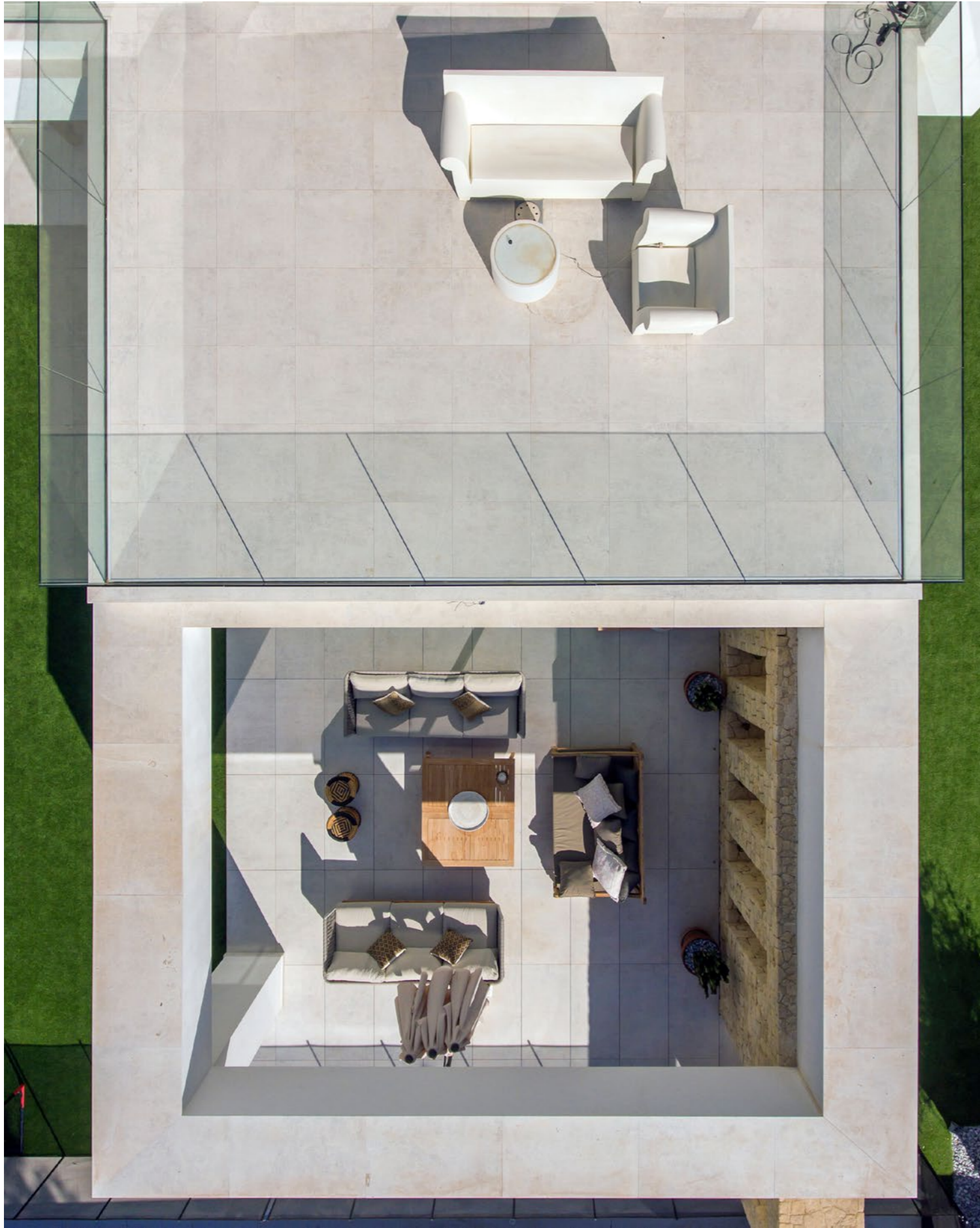


Floor and large-format table with the same code: Dekton® Kreta.

Dekton® Kreta was selected for the outdoor flooring of this house, a grey part of the Industrial Collection that mimics cement.

Even though it is available in 320 x 144 cm format, the designer opted for a more reduced format to leave visible joints reminiscent of a checkerboard.

The same material was used to create the large 4 meter table, which created a monolithic, robust, and potent effect.





04/ Exterior Space

The transformation
of a 1960s building
starting with its façade.

Dekton® and ventilated façades.

The architect of this project had to deal with major structural problems. The idea was to restore a building from the 1960s with a low load-bearing capacity where limitations of energy demand and sound insulation had to be resolved. Furthermore, it was important to find a material that could withstand the unforgiving coastal conditions and could easily hide the installations and building elements.

The developer proposed the use of a ventilated façade with ceramic cladding. Based on this proposal, the architect and marble supplier found the perfect solution in Dekton®.

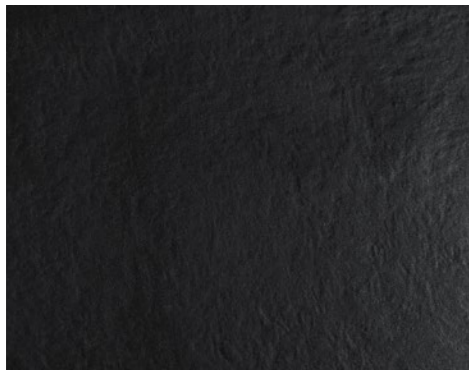
Thanks to Dekton®, they solved the structural and functional problems encountered, while providing an optimum and attractive result in record time.

—
Architecture
Leandro M. del Río Regos

Photography
Roi Alonso



→ Ventilated façade
Dekton® Sirius



Dekton®, the new skin for residential buildings

Thirty-eight 1.2cm thick Dekton® Sirius slabs were used to clad the façade, which corresponds to a total surface area of 175m². These slabs are easy to maintain and are supported on a stainless steel and aluminium structure that is highly resistant to moisture.

05/ Exterior Space

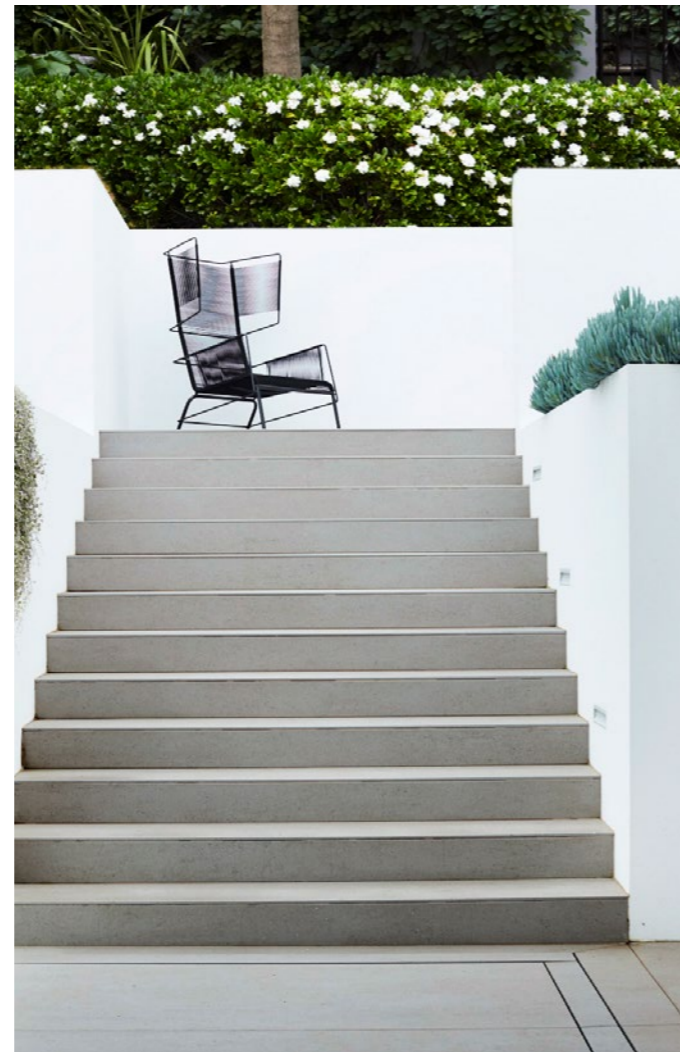
Reinvent outdoor spaces with continuous cream and white surfaces.

Visual continuity, versatility and durability for outdoor spaces.

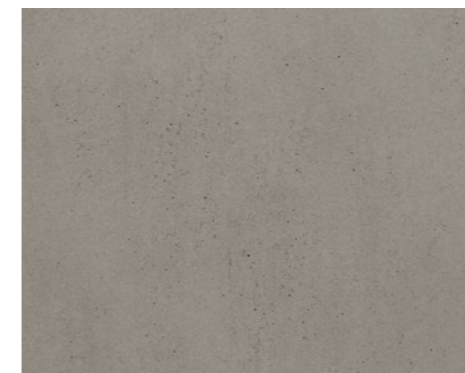
This residential project stands out because of the use of a single material for all of the outdoor flooring, such as: access to the garage, steps, porch, swimming pool, etc. Dekton® Strato has been used throughout the outdoor space, in contrast to the pure appearance of the white walls and the large glass surfaces.

The result is a modern and functional structure that suits any design.





→ Flooring
Dekton® Strato



Dekton® Strato is a material from the Tech Collection that is reminiscent of concrete surfaces. Its grey and beige speckled design creates an attractive and practical interplay of light for outdoor spaces. Thanks to its 320 x 144 cm format, it is the perfect material to provide a sense of visual continuity.



06/ Exterior Space

XXL format for large surfaces which stand out in your home.

Porch and terrace in a single finish.

One of the challenges of this project was to successfully integrate the outdoor space with the rest of the house.

To do this, Dekton® Danæe 320 x 144 cm slabs have been laid vertically with continuous joints that are barely visible.

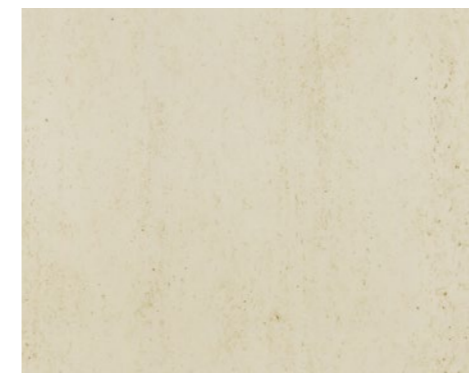
The use of the large format in this layout gives a sense of depth, welcoming you into the home while connecting the outdoor and indoor spaces.

—
Architecture
José Poveda Rivera

Photography
Alberto Rojas



→ Flooring
Dekton® Danae



Endless possibilities in any outdoor space.

In addition to the unique properties of the material that make it ideal for outdoor applications, the different beige shades of Dekton® Danae also make it a very beautiful choice.

The large-format flooring on the two floors of the house connect and blend both spaces seamlessly with an elegant and timeless visual appearance.

07/ Exterior Space

A house on
the mountain
overlooking the fjord.

When the material blends in with nature.

This impressive home is an architectural achievement which showcases materials that blend in and complement nature. Objective: to seamlessly blend in with the surrounding nature, highlighting proximity to the fjord.

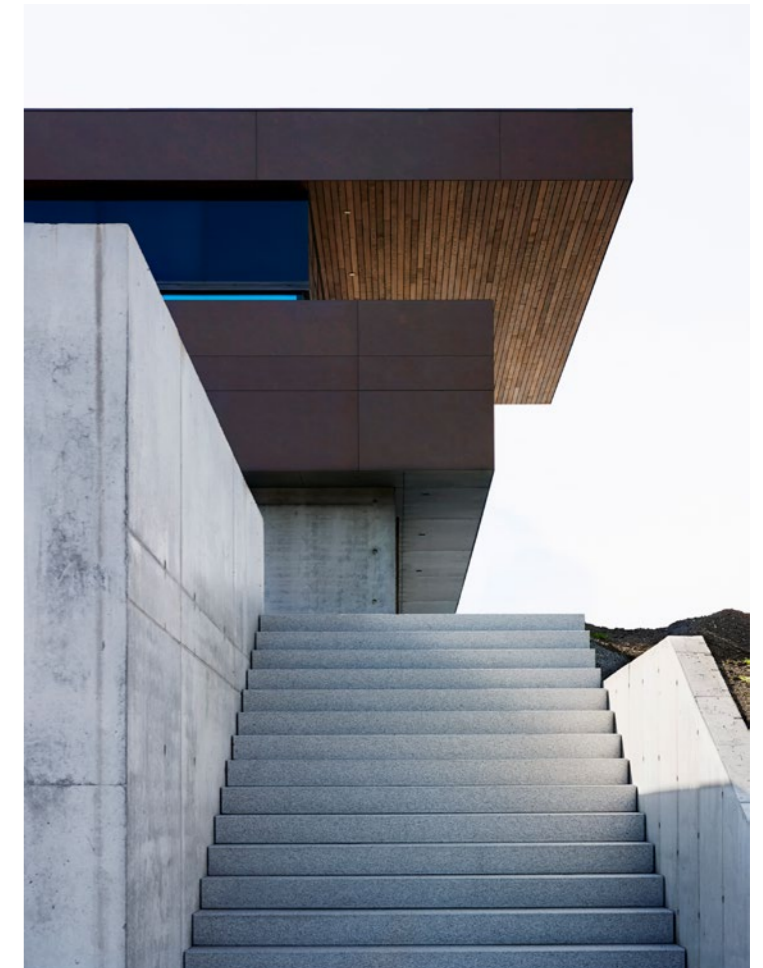
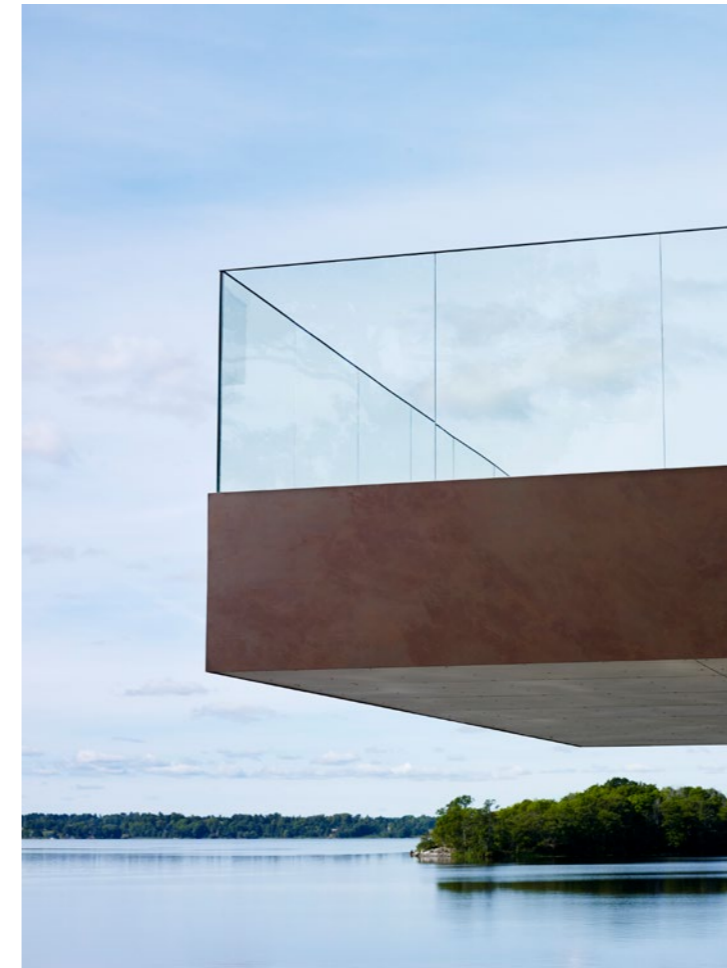
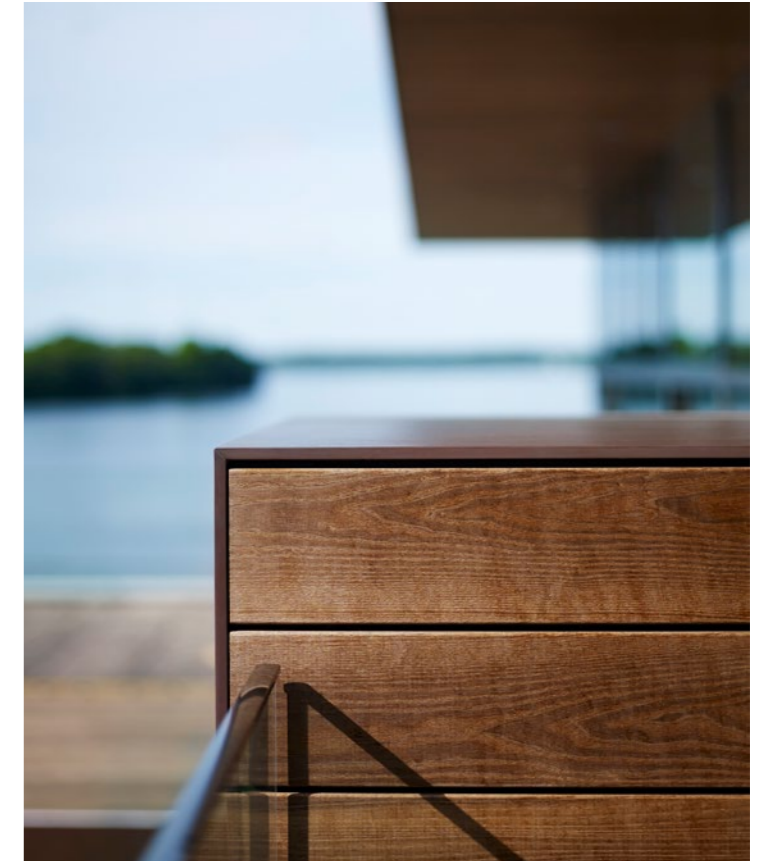
Perfect harmony is achieved with the grey of the reinforced concrete – like rocks – and the brown of the façade cladding – like wood and clay – finished with the infinite glass surfaces overlooking the water.



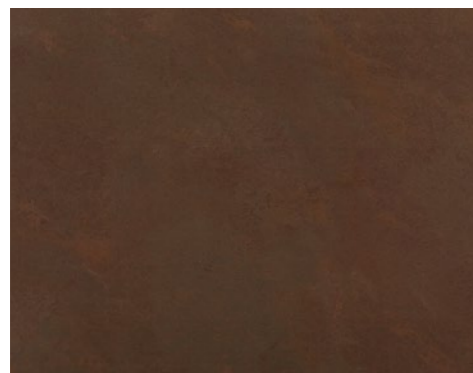
—
Architecture
Arkitektstudio Widjedal Racki

Photography
Sara Danielsson





→ Ventilated façade
Dekton® Kadum



**Reinforced concrete
+ Dekton®**

Dekton® Kadum from the Tech Collection features brown and charcoal tones and an oxidized matte finish, bringing a modern yet industrial feel to any building.

In this home, Dekton® Kadum was the perfect choice to help achieve a very modern architectural style reminiscent of Frank Lloyd Wright's iconic Fallingwater house.

Two resistant materials work together for the façade of this very special home, achieving a fantastic result.

The architect has designed the layout using large slabs and various formats, which helps to create a sense of horizontal symmetry and suits the different spaces.

Cosentino Kitchens

Reinventing the
kitchen to make it
the heart of the home.



Kitchen Space

It's been a long time since the kitchen was a forgotten room in the darkest part of the house. The kitchen is now a key space that can integrate with the living-dining room and share the same design.



Integration within the space

The kitchen as a living space connected to the rest of the house. Total integration of the worktop with the living room cladding or floor.



Kitchen Worktop and Island

Thousands of households all over the world have trusted Cosentino to provide them with a kitchen that is not only functional and beautiful, but also plays a key role in the daily lives of their families. We offer a wide range of colours and textures, so you're sure to find your perfect worktop.



Kitchen Flooring and Cladding

In this so-called "reconversion" process, the island plays a major role, as it serves as a connecting element between the two environments as well as a meeting place in the home. In this project, the interior designer built the entire design around the island.



Kitchen Sinks

The sink is a crucial feature within the room: it must guarantee resilience, safety, and hygiene. At Cosentino we use a low-porosity material which can withstand impact, high temperatures, and frequent exposure to water and grease.

Find your style: colours that combine with everything

For choosing the textures and colours that could fit better with your kitchen, it is key that you know the designs available. Maximise it with the unlimited variety of materials, formats and colours that Cosentino® offers you.





01/ Kitchen Space

Reinventing the kitchen to make it the heart of the home.

Connecting the kitchen and living room.

Gone are the days when the kitchen was a forgotten room in the darkest part of the house. The kitchen is now a key space that can integrate with the living-dining room and share the same design.

In this so-called "reconversion" process, the island plays a major role, as it serves as a connecting element between the two environments as well as a meeting place in the home. In this project, the interior designer built the entire design around the island.



Island in a classic material.

Although this kitchen has a distinctly modern look, the designer has opted for a classic material for the worktop: Silestone® Calacatta Gold in a polished finish. The use of a 5 centimeter strip and the diagonal cut on the front side bring modernity and style to a material reminiscent of ancient marble.

→ Kitchen worktop
Silestone® Calacatta Gold, Polished finish



02/ Kitchen Space

Islands that
turn into
dining tables.

**Kitchen table and
wall cladding in the
same material.**

In this project, the brown tones of dark wood and the black cladding in Dekton® Domoos used on tables and walls, coexist in perfect harmony.

The island, with a built-in sink, is more than just an island. It turns into a genuine dining table of substantial proportions. The bioethanol fireplace serves as a divider between the kitchen and the living area.

The result is an elegant, well-balanced and warm space. The use of large-format cladding, 320 x 144 cm, creates the illusion of an uninterrupted, jointless surface that gives depth to the room, whilst ensuring easy maintenance and cleaning.



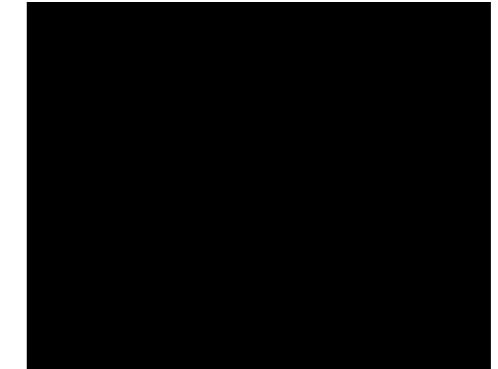
—
Architecture
José Poveda Rivera

Photography
Alberto Rojas



The touch of darkness is provided by Dekton® Domoos, a beautiful material from the Solid Collection in a matte finish, perfect for lovers of sobriety. On the other hand, chocolate brown is used on the leather high chairs and the fireplace mantel.

→ Kitchen worktop
Dekton® Domoos





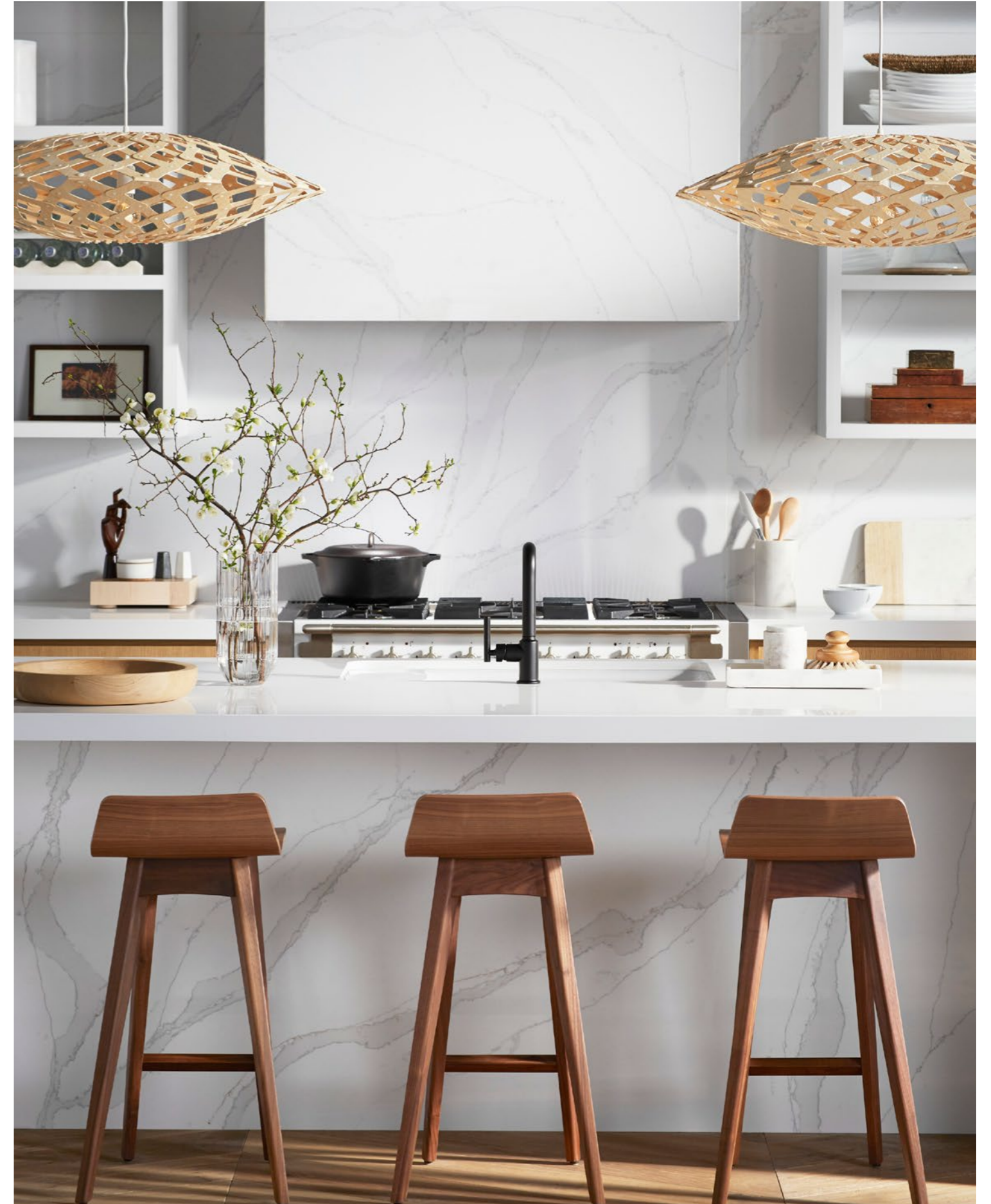
03/ Kitchen Space

Kitchen in Calacatta
Gold and wood.
Classic Scandy.

**Wall, worktop and island
in the same material.**

The success of this project lies mainly in the use of a beautiful and timeless material reminiscent of ancient marble: Silestone® Calacatta Gold. This white surface with grey veins is used for the front cladding –featuring built-in extractor fan and alcoves–, worktop and island, thus achieving a beautiful combination of classic and modern.

In contrast to the coolness of the white and the effect of the marble, the cabinets, floor and seating around the island are all in honey-colored wood. Finally, the designer wanted to give the kitchen a deco touch. To this end, they used black on both sides of the kitchen: on the left, the door casing is clad in Silestone® Eternal Marquina; on the right, the large window features an industrial-looking profile.



Monolithic islands.

The beauty of this project lies in the perfect symmetry between the cooking area, with its built-in extractor fan, and the large, monolithic island. All of this, clad in the same classic, timeless, beautiful material: [Silestone® Calacatta Gold](#).

→ Kitchen worktop
Silestone® Calacatta Gold, Polished finish



04/ Kitchen Space

Boho-chic with
a classic spirit.

**Walls and worktops in
the same material.**

Functionality is the driving force behind this project. The interior designer has arranged a high bar, an industrial stove with gas hobs and a spacious sink offering unbeatable views. In the wine cellar, there is a second auxiliary sink.

To finish off the design, a sober grey tone with subtle veins was used on walls and worktop: Silestone® Eternal Serena. This color is available in standard (306 x 140 cm) and jumbo (325 x 159 cm) formats, the latter being ideal for floor and wall cladding to create a continuous space. The veins of the Silestone® Eternal Marquina island contrast beautifully with the worktop and the backsplash.





→ Cladding wall and island kitchen
Silestone® Eternal Marquina

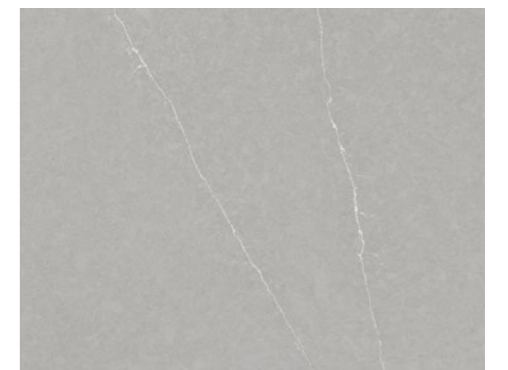


Continuous surfaces.

Using the same material for the wall and worktop results in a continuous, visually attractive surface, which is both practical and easy-to-maintain thanks to the smaller number of joints.

Silestone® Eternal Serena is part of the Eternal Collection, a collection inspired by the colors of natural stone. As such, this material features delicate white veins that give elegance and warmth to the space.

→ Wall and worktop cladding
Silestone® Eternal Serena





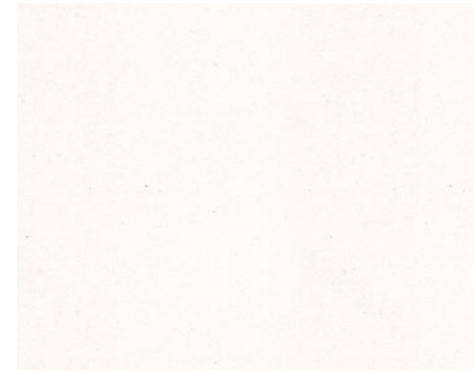
05/ Kitchen Space

Grey and white
for a revamped
classic style.

**The island as
a workspace.**

In this kitchen, the interior designer wanted to maximise the light coming through the skylight and the huge windows. All that natural light falls on a central island of more than 5 square metres, which is the centre of operations and focal point of the kitchen.

The impressive worktop in [Silestone® Blanco Zeus](#), makes white the dominant color on the island. Furthermore, the brickwork and cabinets in pickled wood are also white. In contrast to the light, the secondary areas are in grey tones, while the worktop of the cooking area and the second sink are clad in [Silestone® Charcoal Soapstone](#), a color featuring a black background with veins.



→ Island
Silestone® Blanco Zeus

Brilliant white.

The work area is distinctly defined by the large worktop featuring a 12 cm strip. The use of Silestone® Blanco Zeus in a glossy finish, further enhances the reflection of light.

Auxiliary worktops.

In contrast to the white that dominates the focal point of the kitchen, the interior designer opted for a very dark matte color with greyish veins from the Eternal Collection for the auxiliary worktops: Silestone® Charcoal Soapstone. Inspired by soapstone, this material creates an incredible effect thanks to its depth and fluidity.

→ Wall and worktop cladding
Silestone® Charcoal Soapstone



06/ Kitchen Space

A classy,
urban kitchen.

All in the same material.

In this grey toned kitchen, the designer selected Silestone® Pearl Jasmine for the worktop, wall cladding and the bespoke sink unit. Despite its classic finish, when combined with the black taps and handles, and the clean, straight lines of the kitchen, a very industrial result is achieved.

In contrast, the round ball pendant lights and little gold details break the monotony of grey and add a mid-century touch to the room. The result is an elegant and urban kitchen which also perfectly integrates with the living area.



Architecture
Andre Lenza

Photography
@heliosperandio



A classic material with a modern finish.

Silestone® Pearl Jasmine, part of the Eternal Collection, is reminiscent of limestone with subtle gray veining. It is the perfect material for classic or rural kitchens, but when paired with black urban details, it works perfectly in a modern kitchen.

→ Wall cladding and worktop
Silestone® Pearl Jasmine





07/ Kitchen Space

Total White
redefined.

**The light, spaciousness
and beauty of white.**

White is the color preferred by 90% of designers when it comes to planning a kitchen. This is a wise choice, as white can make a space look bigger while providing a sense of cleanliness and order.

In this kitchen, the interior designer has combined the worktop and island in **Silestone® White Zeus** with glossy lacquered furniture, also in white. The use of thick worktops in the cupboard area, together with the glossy lacquered furniture, add a deco touch to the kitchen.

Architecture
Andre Lenza

Photography
@heliosperandio



A kitchen in Silestone® Zeus.

Silestone® White Zeus gives an impressive, well-defined look to the worktop and side strip. Its pristine appearance conveys energy and is timeless.

→ Worktop and island kitchen
Silestone® White Zeus



08/ Kitchen Space

A contemporary kitchen with rustic decor.

White and grey tones combined with wood.

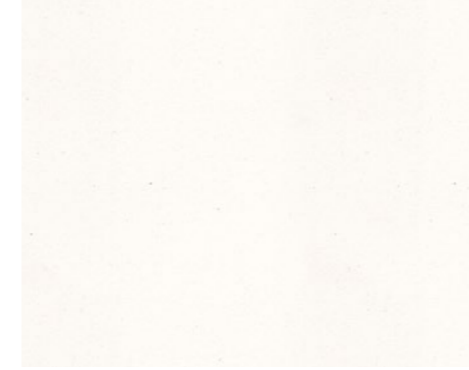
In this project, the designer found a counterpoint for the exposed wooden beam ceiling with the goal of lightening the space and highlighting the high ceilings.

Walls and furniture were selected in an unpolluted white that offered visual continuity with the also white ceiling. As an inflection point, the worktop is a light gray and the furniture around the island a dark gray, accenting everything in this social and work zone. The only concession to rustic style is found in the bar and wooden stools that connect with the ceiling beams. Everything carefully thought out for an impactful kitchen.



Architecture
Rocha e Rodrigues Architects

Photography
Mariana Orsi



→ Island kitchen
Silestone® White Zeus

Two different worktops.

The island is the star of this kitchen. Here, the worktop features a polished finish in Silestone® White Zeus, which creates a strong contrast with the matte dark grey lacquered furniture.



Grey and white.

For the rest of the kitchen worktop, the interior designer selected Silestone® Kensho, a harmonious and relaxing material from the Zen collection that perfectly matches the white of the furniture.

→ Worktop kitchen
Silestone® Kensho





09/ Kitchen Space

A stunning
work surface
for keen cooks.

**A kitchen full
of character.**

In this urban style home with concrete ceilings, the aim was to create a warm, welcoming kitchen where the pleasure of cooking can be enjoyed with friends. Gardening and cooking are the two passions of the owner of this home.

With this in mind, the interior designer planned a cozy kitchen in wood, with a very pleasant living area and a stunning island with a cooking area perfect for cooking for guests.

As for the owner's second great passion, gardening, is reflected in the plants hanging from the ceiling - as if it were an urban garden - and in the many others scattered throughout the rest of the kitchen. Wood and plants meet for a very personal kitchen

—
Architecture
Rocha e Rodrigues Architects

Photography
Mariana Orsi



A stunning island in white

Silestone® White Zeus was the color chosen to clad this extra-large island with integrated hob and sink.

In this kitchen, all the attention is focused on the island thanks to its impressive, glossy finish.

→ Worktop kitchen
Silestone® Blanco Zeus



10/ Kitchen Space

Contemporary style
in this kitchen design
featuring bold veins.



On a pristine white backdrop, the designer wanted to add a personal touch when selecting this island that also serves as a bar. A monolithic block in Dekton® Aura was designed and paired with a large wooden oak board.

Dekton Aura, part of the Natural Collection, mimics classic Carrara marble. Differently from Calacatta Gold, its veins are more gray which makes it the perfect ally to pair with woods, as is the case in this project.

→ Worktop kitchen
Dekton® Aura



—
Architecture
Mariana Andersen and
Mariana Guardani

Photography
Maira Acayaba

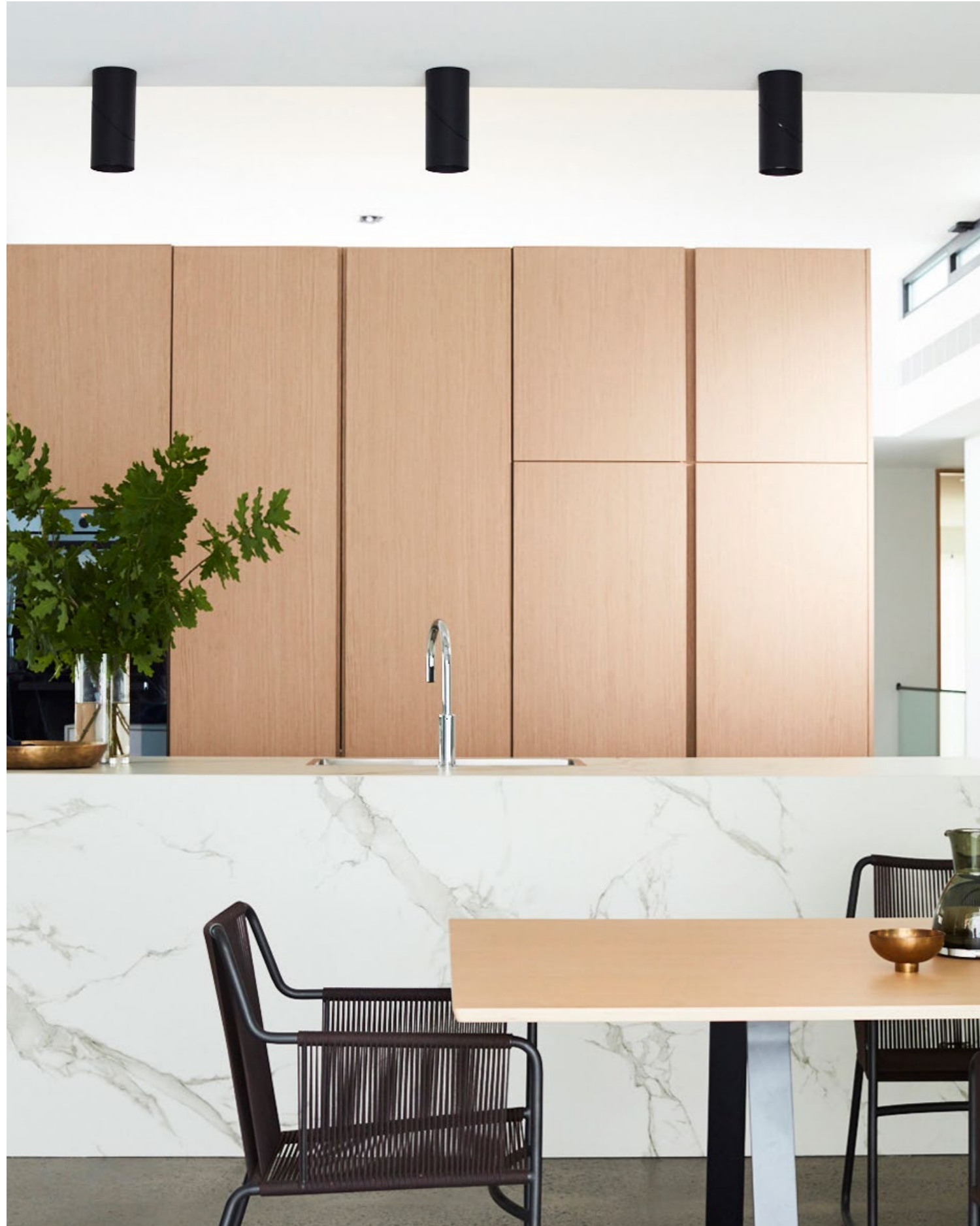




11/ Kitchen Space

Order and harmony
in this stunning space
connected to the
rest of the house.

The kitchen is visually separated from the rest of the house by a wall of cabinets, hiding the electrical appliances. In this kitchen, the extra-large island features a built-in sink and extra space for the dining area. In order to achieve visual continuity in such an open space, both the island and worktop are made of the same material, Dekton® Aura 15.



Island in Dekton® Aura 15.

The designer chose [Dekton® Aura 15](#) for the island and worktop. The use of a classic material with veins in such a well-balanced kitchen brings movement and personality to the room.

→ Worktop kitchen
Dekton® Aura 15



12/ Kitchen Space

Reinventing the kitchen to make it the heart of the home.

Cubic lines and a play of planes.

For this kitchen design, the owner wanted a tidy and functional space that would blend harmoniously with the classic style of their living room furniture. Based on that request, the designer planned a large white island with an integrated sink and cooking area.

A robust, horizontal surface in Dekton® Sirius outlines the bar and then continues along the wall, helping to enlarge the space. The steel cooker hood in a double-cube design above the hob finishes off the room. The result is a kitchen carefully designed, in which nothing has been left to chance.



—
Architecture
Muxacra

Photography
Alberto Rojas



→ Island kitchen
Dekton® Bergen (X-Gloss)

The island as a sculpture.

To bring some movement and character to this kitchen, the designer chose Dekton® Bergen in polished finish for the island. This material, from the Stonika XGloss Collection, is inspired by Portobello stone.

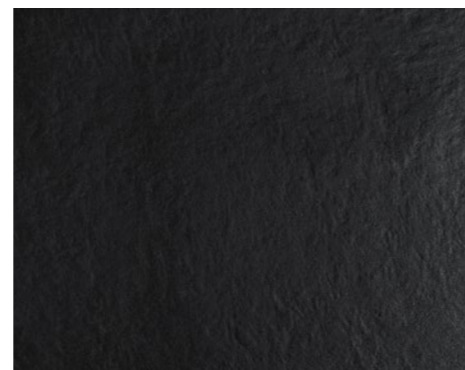


A stunning black bar.

In this kitchen, Dekton® Sirius bar extends across the island and then continues along the wall. This black textured color, without veins, contrasts beautifully with the traditional colour of Dekton® X-Gloss Bergen.

Furthermore, Dekton® Sirius blends in perfectly with other appliances such as taps, ceiling lamps and stools, also in black.

→ Island kitchen, Dekton® Sirius



Silestone® Integrity Sinks

Full range of products.

Without joints, cracks, or limits. Integrity wants to unite your kitchen with surfaces don't have an ending or beginning. Integrity brings a sense of unity and perfect integration with the rest of the elements on your worktop. A single piece available in a range of Silestone® colors, so your kitchen is endless.



Available in a wide variety of colors.



Check available colors at [cosentino.com](https://www.cosentino.com)

Silestone® Integrity offers all the features include that has made of Silestone the best product of the market: high scratch resistance, durability and of course the highest performance in terms of design.



Integrity Due S

Silestone®

Outer measure 40 x 37 x 17.5 cm
Inner measure 37 x 34 x 15.5 cm

Radius between walls 6.5 cm
Radius between bottom and sides 0.3 cm



Integrity One

Silestone®

Outer measure 54 x 44 x 17.5 cm
Inner measure 51 x 41 x 15.5 cm

Radius between walls 13 cm
Radius between bottom and sides 0.3 cm



Integrity Due L

Silestone®

Outer measure 54 x 40 x 17.5 cm
Inner measure 51 x 37 x 15.5 cm

Radius between walls 6.5 cm
Radius between bottom and sides 0.3 cm



Integrity Q

Silestone®

Outer measure 55 x 44 x 17.5 cm
Inner measure 51 x 41 x 15.5 cm

Radius between walls 3 cm
Radius between bottom and sides 3 cm



Integrity Due XL

Silestone®

Outer measure 70 x 46.5 x 23.5 cm
Inner measure 67 x 43.5 x 21 cm

Radius between walls 6.5 cm
Radius between bottom and sides 0.3 cm



Integrity Top

Silestone®

Outer measure 54 x 40 x 17.5 cm
Inner measure 51 x 37 x 15.5 cm

Radius between walls 6.5 cm
Radius between bottom and sides 0.3 cm



Furniture

Surfaces integrated with
unique and timeless
furniture design.

**Dekton®,
the furniture's skin**

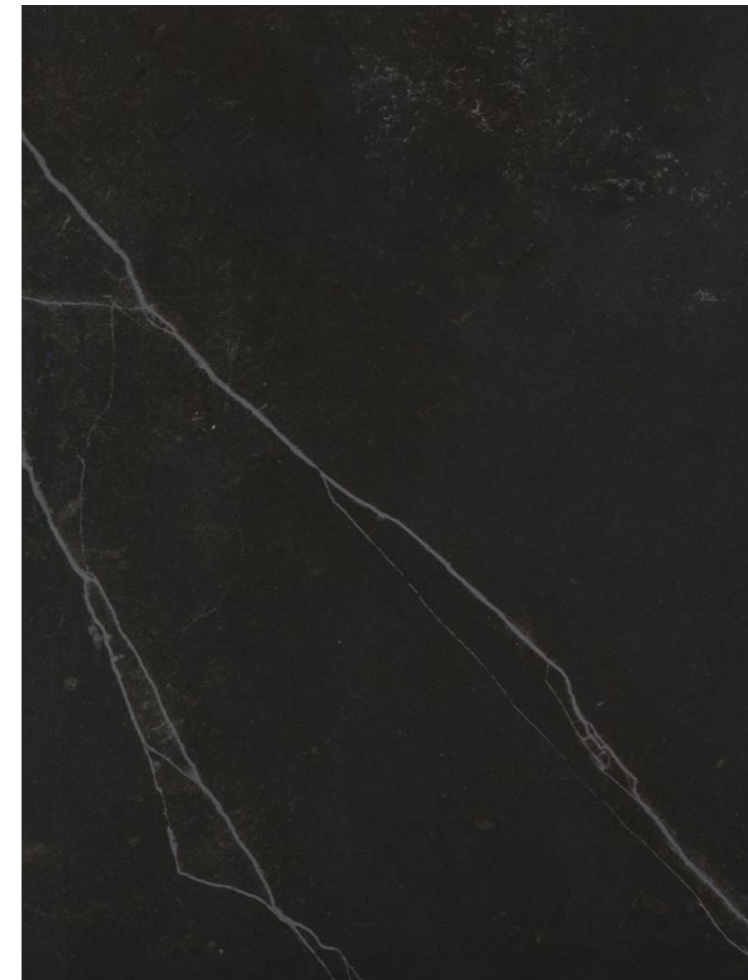
It's on-trend to use the same cladding on the kitchen or bathroom worktop to clad drawers and wardrobes. This allows you to achieve continuous and clean surfaces where joints disappear, creating a monolithic effect.

This decor trend is only possible with the technological evolution of materials. 8 mm and 12 mm thicknesses are ideal for tables and coffee tables. The slim 4 mm thickness format allows kitchen and bathroom furniture cladding, and also answer the creative restlessness of the designer: table tops for the interior and exterior completely personalized and exclusive.

Furniture

Unprecedented durability and design.

Cosentino® surfaces redefine furniture thanks to their versatility, durability, and beauty.



Dekton® Slim, 4 mm thickness makes it an incredibly easy material to work with. Its light weight and properties make it the ideal solution to clad all types of furniture and adapt to any aesthetic proposal: in white and gold, in black and chrome...

Dekton® Slim has all the advantages and properties of Dekton, high resistance to scratches and stains.

→ Kitchen furniture cladding, Dekton® Slim Zenith



Ideal for cladding wardrobe doors and kitchens

Dekton® Slim Zenith and Dekton® Slim Opera were the two tones chosen to hide these drawers under the stairs or on the front of the kitchen. The result is a camouflaged surface of this practical storage solution, without compromising the aesthetic of the space.

→ Kitchen furniture cladding, Dekton® Slim Opera



→ Kitchen furniture cladding, Dekton® Slim Kreta



Cabinets integrated into the island

Dekton® Slim is the perfect solution to clad drawers in the kitchen island, achieving a monolithic effect.

For this industrial project, the designer chose Dekton Trilium: a finish inspired by volcanic rock with a touch of oxidation, which adds great character to the space.

Once again, Slim's 4 mm thickness allows the creation of an island totally integrated with drawers.



→ Kitchen furniture cladding, Dekton® Slim Trilium



→ Table top, Dekton® Laos



→ Table top, Dekton® Laos



→ Table top, Sensa by Cosentino® Orinoco



Unique and marked veins in small surfaces.

With Sensa by Cosentino® the designer can run with his most creative ideas and choose natural materials with pronounced veining, such as the color Orinoco.

Sensa by Cosentino® is protected natural stone. The designer can choose the part of the stone they want for their design. This has a particular quality: there will never be a table like this one.

—
Design
Cosentino®

Photography
Francisco Carrasco



→ Table, Dekton Aura



—
Architecture
Mauricio Nóbrega

Large cubic blocks

Dekton® allows you to clad large furniture pieces as if they were blocks of stone straight out of the quarry. In this space, the designer used Dekton® Aura 15, in its large format version, to create a strong center table of extraordinary dimensions.



→ Table top, Dekton® Kelya



→ Table top, Dekton® Kelya



Indoor & Outdoor.

Another advantage of Dekton® table cladding is that it works for both interior and exterior. Its high resistance to UV rays and changes in temperature make it the perfect material for outdoor furniture, avoiding degradation over time.

→ Tablero mesa, Dekton® Aura 15



Continuous veining composition

The luminosity and neutrality of tone of Dekton® Aura are poured onto a personalised canvas, characterised by a fluid continuity of grain between the different pieces that make up the table.

Total adaptability for modular systems.

The lightness of Dekton® in its 4, 8, and 12 mm formats allows it to adapt to modular systems or table extensions and create compositions of high esthetic and functional value.



→ Table top, Dekton® Trilium



→ Table top, Silestone® Eternal Statuario



Ideal for work spaces

The properties of Dekton® and Silestone® make these materials the perfect choice for work spaces. With their endless possibilities in terms of finishes and designs, they add a deco touch to these spaces and create attractive and functional tables suitable to work from home.

COSENTINO®

Ctra. Baza a Huércal-Overa, km 59 / 04850
Cantoria - Almería (Spain) / Tel.: +34 950 444 175
info@cosentino.com / www.cosentino.com



* To obtain more information about hues with NSF certification please visit www.nsf.org

** The Carbon Neutral certification only applies to the Sunlit Days series.