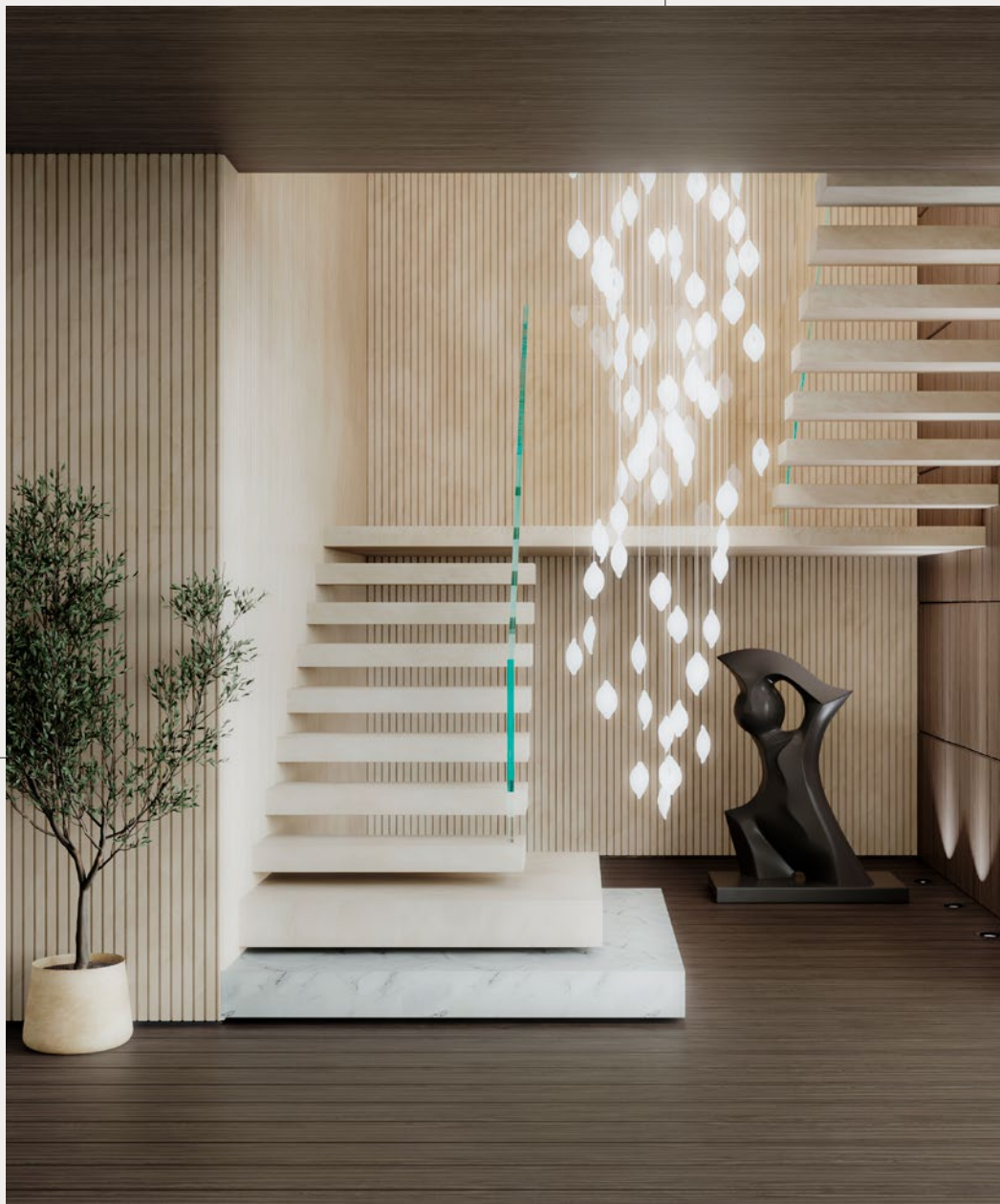


# Cosentino Product Guide

DISCOVER ALL THE 2024 PRODUCTS



SILESTONE

—

SILESTONE XM

—

DEKTON

—

SENSA

PRODUCT  
CONTENT

# Cosentino Product Guide

SILESTONE

—

SILESTONE XM

—

DEKTON

—

SENSA

# Cosentino Product Guide

# Content

→ 6  
**01**  
COSENTINO

Innovative surfaces that bring the designer's vision to life throughout the home, in both indoor and outdoor spaces

Certifications → 8

→ 10  
**02**  
GET INSPIRED



Around the world → 12

→ 14  
**03**  
SUSTAINABILITY

- Energy → 15
- Water → 16
- Materials → 16
- CO<sub>2</sub> Neutral → 18



→ 26  
**04**  
PRODUCTS AND BRANDS

- Dekton → 20
- Dekton Slim Protek → 23
- Dekton Design Match → 28
- Dekton Ukiyo → 30
- Pietra Kode Collection → 40
- Dekton Collection → 48
- Silestone → 56
- Silestone XM → 62
- Earthic Collection → 70
- Le Chic Collection → 84
- Silestone Collection → 94
- Sensa by Cosentino → 90
- Sensa Collection → 100
- Scalea → 104

→ 106  
**05**  
SPACES



→ 108  
**5.1**  
LIVINGS



→ 114  
**5.2**  
BATHROOMS



- Sinks → 122
- Shower Trays → 126
- HLine Bath Tops → 128
- Flooring → 128

→ 134  
**5.4**  
KITCHENS



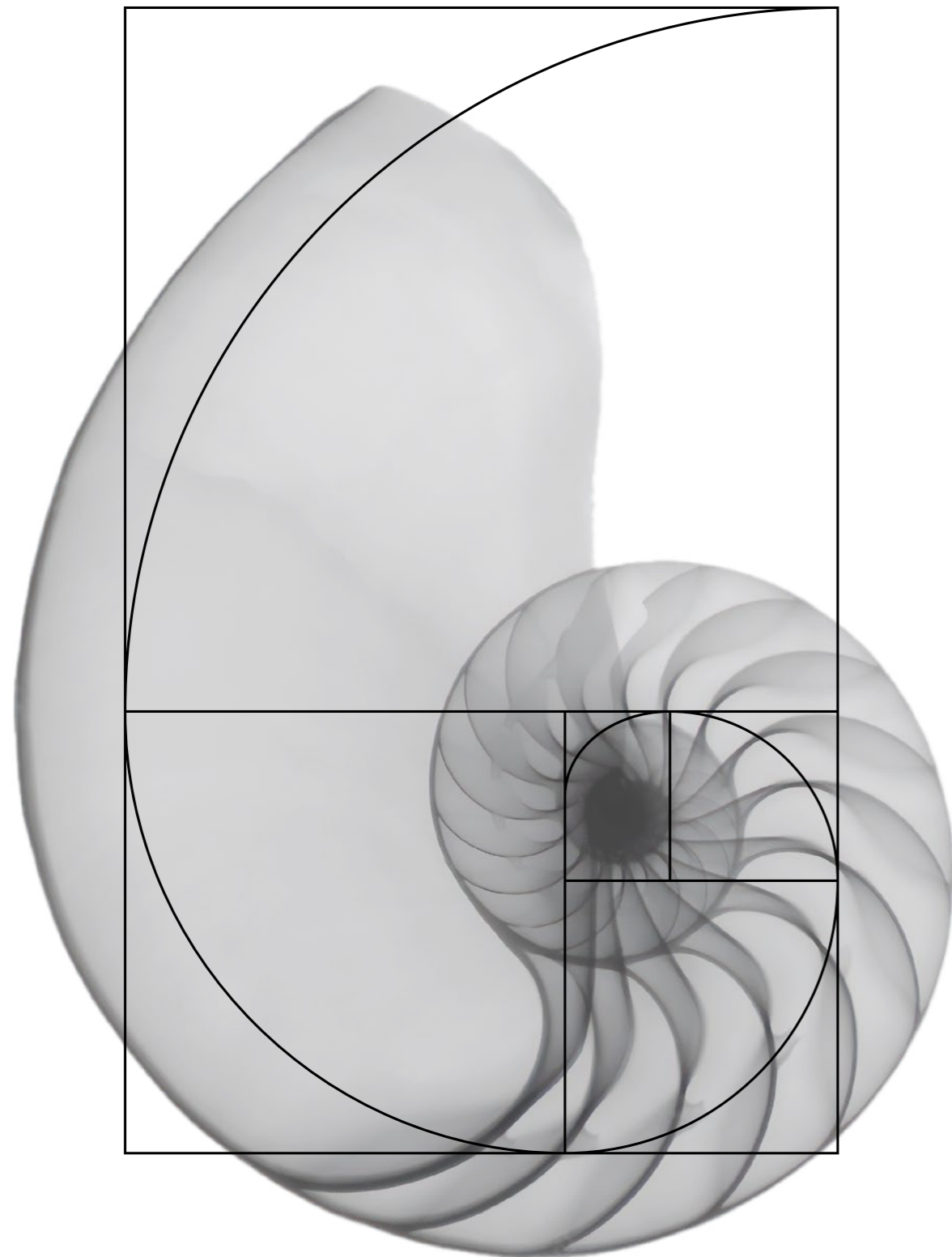
Silestone Sinks → 142

→ 130  
**5.3**  
OUTDOOR



→ 144  
**5.5**  
FURNITURE





### Corporate Purpose

## Meaningful Design to Inspire People's Lives

### Meaningful

We strive to live in harmony and responsibility with nature and the environment in which we live. To practice a philosophy of life that is coherent and reasonable.

### Design

We live and create spaces with character, pleasant homes and environments for healthy living.

### to Inspire

We inspire and get inspired to create beautiful and functional designs that come to life.

### People's

People are at the heart of our business and we aim to improve their lives and contribute to their well-being.

### Lives

There is only one life and it can be lived in many different ways. That is why our products are designed to adapt to and anticipate the real needs of society.

We are Cosentino



# Certifications

Cosentino has an unwavering commitment and respect for the environment and demonstrates this through responsible resource management, guaranteeing a commitment to innovation and continuous improvement of our processes, products, and services on a global scale.

## Cosentino

- ISO 9001
- ISO 14001
- ISO 20400
- ISO 45001
- ISO 50001
- UNE 15896
- Credits in Leed and Breeam in Silestone, Dekton and Sensa by Cosentino
- CSR (verified by KPMG) based on GRI - Global Reporting Initiative

## Silestone

- Declare Label
- EPD (Environdec)
- VOC (UL) Greenguard and Gold.
- VOC (Eurofins) A+
- Kosher - Countertops
- Food contact (NSF) All food contact types - Countertops
- DoC (Declaration of Conformity) in accordance with Regulations 1935/2004 / EC, 2023/2006 / EC, 10/2011 / EU - Countertops
- DoC (Declaration of Conformity) according to EN 15285, EN 15286 - Floors and coatings
- DoC Integrity (Declaration of Conformity) according to EN 13310 - Sinks

## 3D

- DoC Integrity (Declaration of Conformity) in accordance with EN 13310 - Sinks.

## Dekton

- Declare Label
- DGNB Label
- EPD (Environdec)
- VOC (UL) Greenguard and Gold.
- VOC (Eurofins) A+
- Chemical Spot Test (SEFA)
- Fire Safety Certification APF-1525 (Applus) based on ISO 1716
- Combustibility Test (CSIRO) based on AS 1530.1
- Fire Euroclass A1 (Tecnalia) basado en 13501-1
- Burning Characteristics (QAI) basado en ASTM E84-15bb
- DoC (Declaration of Conformity) in accordance with EN 14411 Annex G - Floors and coatings
- DoC (Declaration of Conformity) in accordance with European directive 2014/90 / EU - Boats
- DoC (Declaration of Conformity) in accordance with ETAG 034 Article 66.3 - Facades / DoC (Declaração de Conformidade) de acordo com ETAG 034 Artigo 66.3 - Fachadas
- ETA 14/0413 - Ventilated facades
- BBA 16/5346 - Ventilated facades
- NOA 19-0227.02 - Ventilated facades
- DoC (Declaration of Conformity) in accordance with ETAG 034 Article 66.3 - Facades
- ETA 14/0413 - Ventilated facades
- BBA 16/5346 - Ventilated facades
- NOA 19-0227.02 - Ventilated facades
- Seismic Test Report T1601 (NCREE)
- Kosher - Conformidad
- Contacto Alimentario (NSF) Splash zone - Encimeras

## Bathroom Collection

### Sinks

- DoC (Declaration of Conformity) according to EN 14688
- CSA/IAPMO TJ5065 (QAI) based on CSA B45.5-17 / IAPMO Z124

### Shower trays

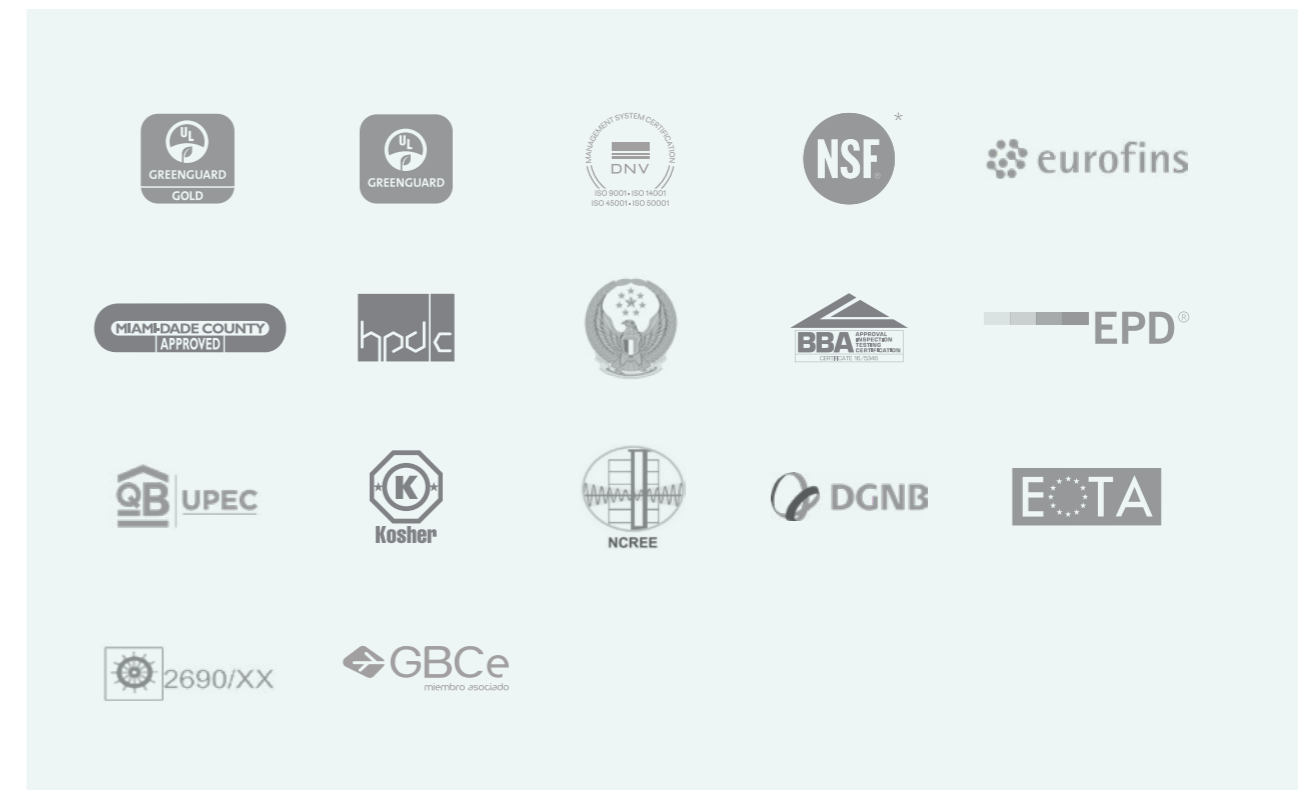
- DoC (Declaration of Conformity) according to EN 1452
- Slip-Resistant TJ5148-2 (QAI) based on ASTM F462
- CSA/IAPMO TJ5148-1 (QAI) based on CSA B45.5-11 / IAPMO Z124

## Sensa by Cosentino

- VOC (UL) Greenguard and Gold.
- Food Contact (NSF) Splash zone - Countertops

## Scalea

- DoC (Declaration of Conformity) according to EN 1341, EN 1469, EN 12057, EN 12058 - Floors and coatings



\* To obtain more information about hues with NSF certificate please visit [www.nsf.org](http://www.nsf.org)

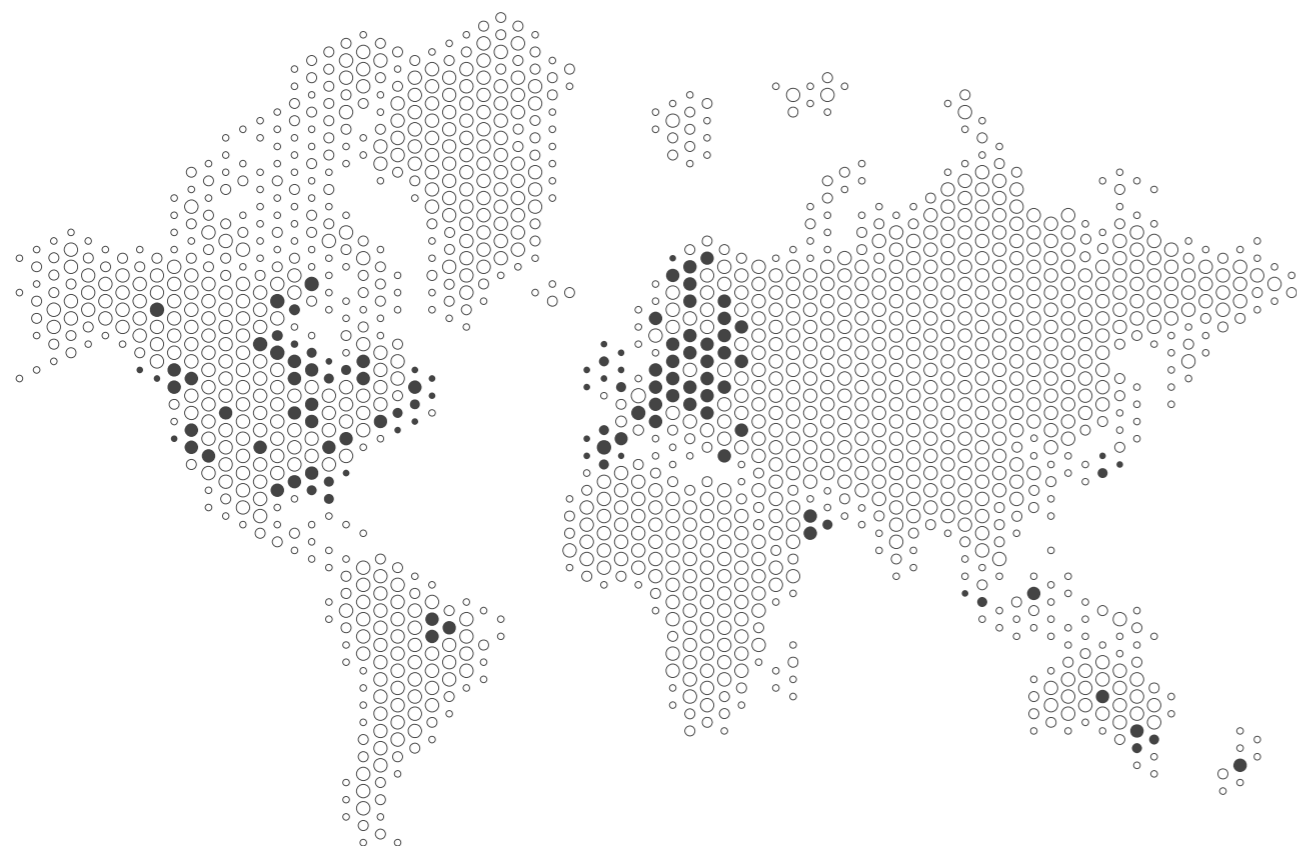


→ Cosentino City Lisboa



Get Inspired





## A big family around the world

Live the Cosentino DNA in a multifunctional space designed to connect.

Cosentino puts a network of Cosentino Cities in over a dozen cities across the world at your disposal. Created as meeting places for inspiration and creativity, they assist interior designers and architects with finding everything they need from Cosentino.



→ Cosentino City Barcelona / Atelier LAB

### USA

- Cosentino AMERICAS
- Cosentino ANAHEIM
- Cosentino ATLANTA
- Cosentino AUSTIN
- Cosentino BOISE
- Cosentino BOSTON
- Cosentino CHARLOTTE
- Cosentino CHICAGO
- Cosentino CINCINNATI
- Cosentino DALLAS
- Cosentino DENVER
- Cosentino DETROIT
- Cosentino FORT LAUDERDALE
- Cosentino HAWAII
- Cosentino HOUSTON
- Cosentino KANSAS CITY
- Cosentino LONG ISLAND
- Cosentino LOS ANGELES
- Cosentino MILWAUKEE
- Cosentino MINNEAPOLIS
- Cosentino NASHVILLE
- Cosentino NEW JERSEY
- Cosentino NEW ORLEANS
- Cosentino OKLAHOMA CITY
- Cosentino ORLANDO
- Cosentino PHILADELPHIA
- Cosentino PHOENIX
- Cosentino PITTSBURGH
- Cosentino PORTLAND
- Cosentino RALEIGH
- Cosentino ROCHESTER
- Cosentino SACRAMENTO
- Cosentino ST. LOUIS
- Cosentino SALT LAKE CITY
- Cosentino SAN DIEGO
- Cosentino SAN FRANCISCO
- Cosentino SAVANNAH
- Cosentino SEATTLE
- Cosentino SPOKANE
- Cosentino TAMPA
- Cosentino VIRGINIA
- Cosentino WASHINGTON DC
- Cosentino CITY LOS ANGELES
- Cosentino CITY MANHATTAN
- Cosentino CITY MIAMI
- Cosentino CITY SAN FRANCISCO
- Cosentino CITY CHICAGO
- Cosentino CITY ATLANTA
- Cosentino CITY WASHINGTON DC
- Cosentino CITY BOSTON
- Cosentino CITY SEATTLE
- Cosentino HUB HOUSTON
- Cosentino HUB NORFOLK
- Cosentino HUB WEST COAST

### AUSTRIA

- Cosentino VIENA

### CANADA

- Cosentino CALGARY
- Cosentino QUEBEC
- Cosentino TORONTO
- Cosentino VANCOUVER
- Cosentino OTTAWA
- Cosentino WINNIPEG
- Cosentino TORONTO NORTH
- Cosentino TORONTO SOUTH
- Cosentino CITY MONTREAL
- Cosentino CITY TORONTO
- Cosentino CITY VANCOUVER

### LATAM

- Cosentino PUERTO RICO

### MALAYSIA

- Cosentino KUALA LUMPUR

### MÉXICO

- Cosentino MÉXICO DF
- Cosentino CITY LOS CABOS
- Cosentino CITY MÉXICO DF

### SPAIN

- Cosentino HQ
- Cosentino A CORUNA
- Cosentino ALMERÍA
- Cosentino BARCELONA
- Cosentino BILBAO
- Cosentino CASTELLÓN
- Cosentino GIRONA
- Cosentino GRANADA
- Cosentino MADRID
- Cosentino MERIDA
- Cosentino MURCIA
- Cosentino SAN SEBASTIÁN
- Cosentino SANTANDER
- Cosentino SEVILLA
- Cosentino TOLEDO
- Cosentino VALENCIA
- Cosentino VALLADOLID
- Cosentino VIGO
- Cosentino ZARAGOZA
- Cosentino MALLORCA
- Cosentino TENERIFE
- Cosentino GRAN CANARIA
- Cosentino CITY MADRID
- Cosentino CITY BARCELONA
- Cosentino CITY BILBAO
- Cosentino CITY MALLORCA
- Cosentino CITY MÁLAGA

### PORTUGAL

- Cosentino LISBOA
- Cosentino PORTO
- Cosentino CITY LISBOA

### IRELAND

- Cosentino DUBLIN

### BRASIL

- Cosentino LATINA
- Cosentino GOIANIA
- Cosentino SANTA CATARINA
- Cosentino SAU PAULO
- Cosentino RIO DE JANEIRO
- Cosentino CITY SAU PAULO

### UK

- Cosentino BELFAST
- Cosentino DARLINGTON
- Cosentino EAST LONDON
- Cosentino GLOUCESTER
- Cosentino HOOK
- Cosentino MANCHESTER
- Cosentino NEWMARKET
- Cosentino SCOTLAND
- Cosentino CITY LONDON

### DENMARK

- Cosentino DENMARK

### FINLAND

- Cosentino HELSINKI

### GERMANY

- Cosentino BERLIN
- Cosentino DÜSSELDORF
- Cosentino MÜNCHEN
- Cosentino STUTTGART

### ITALY

- Cosentino BARI
- Cosentino CATANIA
- Cosentino CATTOLICA
- Cosentino MILANO
- Cosentino ROMA
- Cosentino TORINO
- Cosentino VENEZIA
- Cosentino CITY MILANO

### FRANCE

- Cosentino BORDEAUX
- Cosentino LYON
- Cosentino MARSEILLE
- Cosentino PARIS
- Cosentino RENNES
- Cosentino STRASBOURG
- Cosentino TOULOUSE
- Cosentino CITY PARIS

### BELGIUM

- Cosentino BELGIUM
- Cosentino CITY ANTWERP

### NORWAY

- Cosentino OSLO

### SWEDEN

- Cosentino GÖTEBORG
- Cosentino STOCKHOLM
- Cosentino CITY STOCKHOLM

### SWITZERLAND

- Cosentino ZÜRICH

### HOLLAND

- Cosentino THE NETHERLANDS
- Cosentino CITY AMSTERDAM

### ISRAEL

- Cosentino CAESAREA
- Cosentino CITY TEL AVIV

### TURKEY

- Cosentino ANKARA
- Cosentino ISTAMBUL
- Cosentino IZMIR
- Cosentino CITY ISTAMBUL

### SINGAPORE

- Cosentino SINGAPORE
- Cosentino CITY SINGAPORE

### AUSTRALIA

- Cosentino ADELAIDE
- Cosentino BRISBANE
- Cosentino MELBOURNE NORTH
- Cosentino MELBOURNE SOUTH
- Cosentino PERTH
- Cosentino SYDNEY
- Cosentino CITY SYDNEY
- Cosentino HUB SYDNEY

### NEW ZEALAND

- Cosentino AUCKLAND
- Cosentino LO CHRISTCHURCH

### JAPAN

- Cosentino CITY TOKIO
- Cosentino LO JAPAN

### SOUTH AFRICA

- Cosentino JOHANNESBURG
- Cosentino LO CAPE TOWN

### UAE

- Cosentino LO DUBAI
- Cosentino CITY DUBAI

### POLAND

- Cosentino WARSAW
- Cosentino KATOWICE
- Cosentino POZNAN

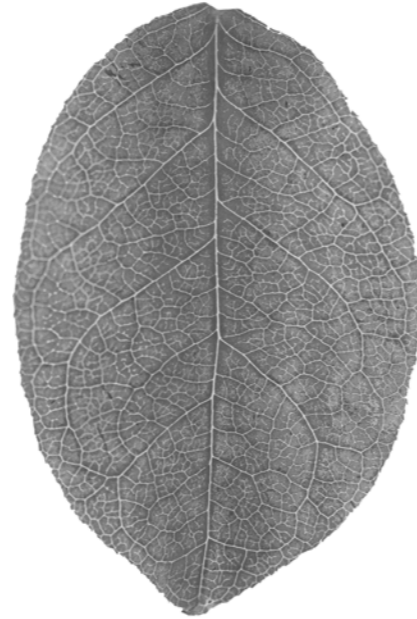


# Sustainability

At Cosentino, we approach sustainability as a collective commitment that stems from the individual involvement of those that are a part of Cosentino.

Our continuous improvement efforts involve constant analysis of our entire value chain - from the acquisition of raw materials to the delivery of the final product to consumers.

We are firmly aligned with the United Nations' 2030 Agenda. As a global leader in the manufacturing and distribution of innovative surfaces from our headquarters in Almeria, Spain, we are committed to driving the path towards local and global sustainability.



→ Olive trees in the Cosentino industrial park



→ LED lighting throughout the Cosentino industrial park



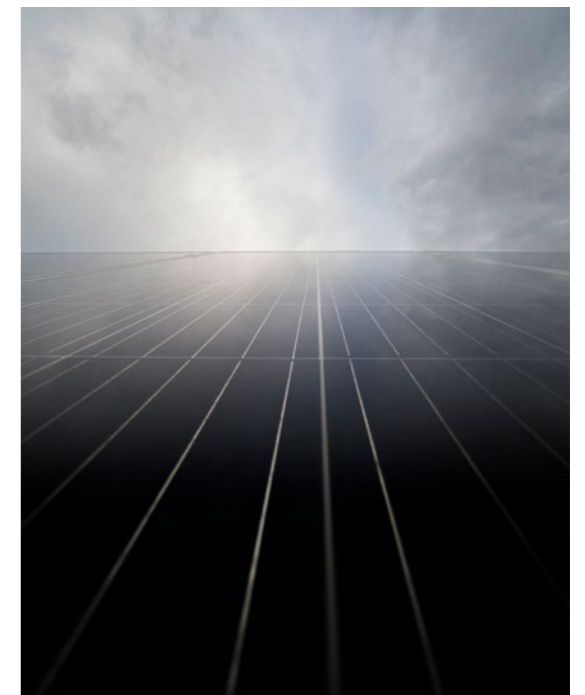
→ Photovoltaic installations at Cosentino

## Energy

Energy efficiency and the use of renewable energy sources are the two core elements of our strategy to minimize the impact of our activities.

100% of our energy consumption comes from renewable energy sources, and we aspire to reach 30% energy self-consumption in the coming years.

On the other hand, the constant improvement of our processes and machinery allows us to reach a high level of energy efficiency, which translates into an 8% decrease of our electrical consumption in our production processes.





## Water

Since our inception, we have valued the importance and understood the challenges of proper water management.

It has motivated us to implement a sustainable use policy maximizing the efficient use of water resources in the different production processes.

We use cutting-edge technology to achieve 99% recycled water in all our processes in the Cosentino Industrial Park.

In addition, we use 100% of the surplus water to irrigate green areas.

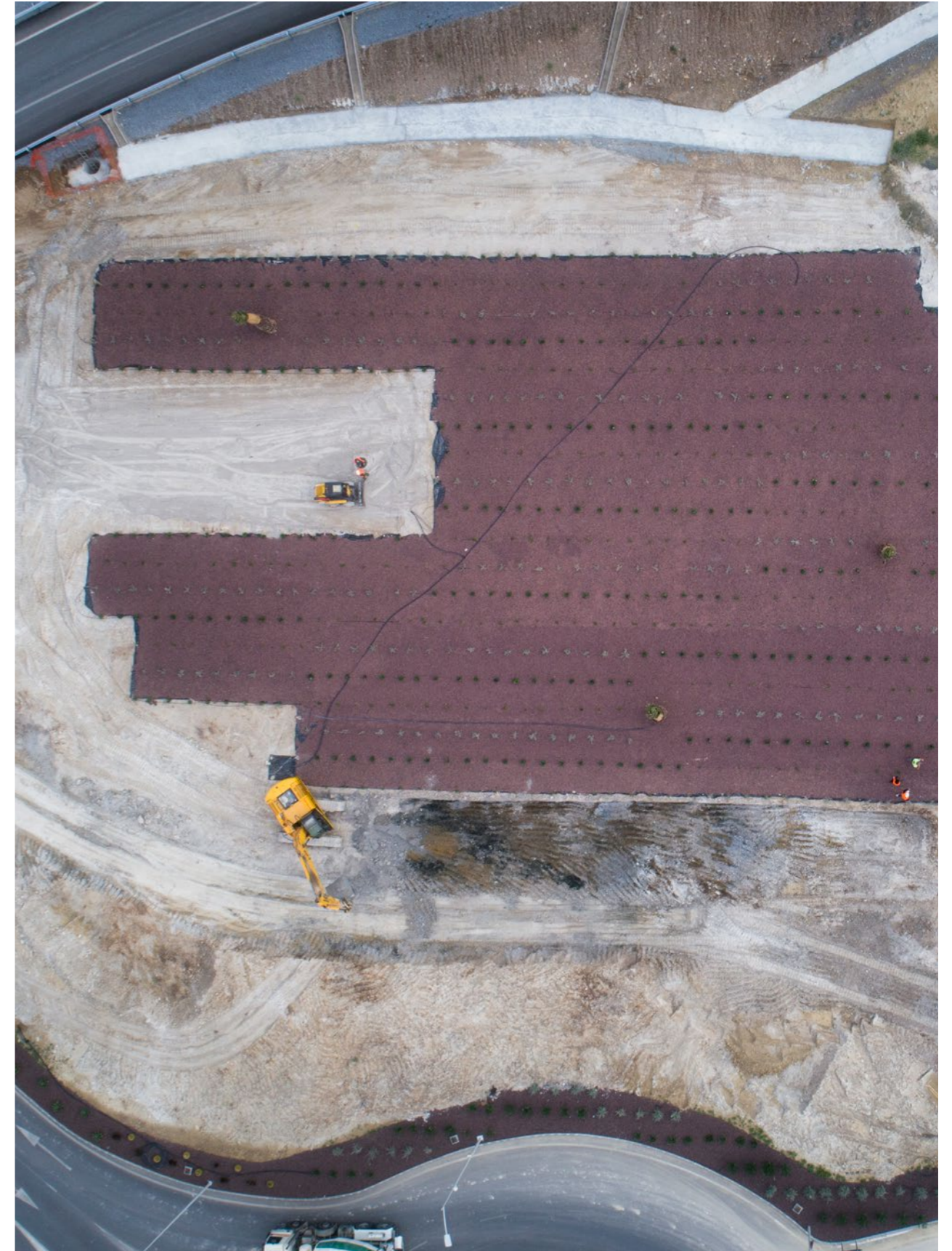


## Materials

We are committed to making the most of the materials we work with throughout the value chain.

In recent years we embarked on an ambitious R&D project called "Circularity" to reuse the materials from which our products are made.

Another action is the innovative Hybriq+® technology that brings about the new generation of Silestone. Hybriq+® incorporates a minimum of 20% recycled materials and is manufactured with 100% renewable energy and 99% recycled water.





## Carbon neutrality: Sustainable design

Cosentino Group is deeply committed to sustainable development in the company's growth strategy, prioritizing respect and protection of the environment.



### We calculate our carbon footprint

It is an external body that verifies the calculation and the results of the carbon footprint that is submitted to the Spanish Ministry for Ecological Transition and Demographic Challenge (MITECO, in Spanish), which is responsible for approving and registering our footprint, becoming part of the **'Spanish registry of carbon footprint, offsetting and carbon dioxide absorption projects'** of the Spanish Climate Change Office (OECC, in Spanish), whose results are made public as an exercise in transparency.

This calculation uses energy and/or fuel consumption data, as well as raw material consumption data collected from all **Group subsidiaries** (Centres, Workshops, Cities, HUBs, HQ, etc.) with a view to offset these emissions.

We address aspects related to the efficient use of natural resources, proper waste management, atmospheric emissions, discharges and other potential impacts in order to make sustainable use of natural resources and protect biodiversity and ecosystems.

At Cosentino we are strongly committed to the 2030 Agenda promoted by the United Nations and the Local Action Plan promoted by the Spanish Government.



### We reduce our impact

We are committed to energy efficiency, emissions reduction and sustainable mobility to minimize our impact.

- **Energy efficiency:** it is a priority for Cosentino to reduce energy consumption in the production process and in the general group activity, which is why we have managed to obtain 100% of the electricity we use from renewable sources.
- **Emission reduction:** 2.8 million euros have been invested in the implementation of an energy management and monitoring system for the heat systems, which allows heat from the Dekton furnaces to be recovered and used in the dryers, thus reducing emissions.
- **Sustainable mobility:** we have recently joined the 'Plan Sumamos Salud + Economía' under which we have a Mobility Policy that helped us to avoid 230 TCO<sub>2</sub> in 2018.

As a demonstration of our commitment, we have managed to offset the 42,532 tons of CO<sub>2</sub> emissions resulting from one year of Dekton production, thus obtaining the Zero Carbon Footprint label for the entire product life cycle in 2019 for all Dekton products.

In addition, the Sunlit Days series by Silestone is the brand's first collection to achieve the carbon neutral certification.

### CO<sub>2</sub> NEUTRAL

### We offset our emissions

To achieve carbon neutrality in Dekton, at Cosentino **we offset our emissions over the entire product life cycle** (scopes 1+2+3) by investing in GHG emission reduction projects.

For this purpose, we identify those projects that meet the requirements for responsible offsetting and that, in turn, have a strong social dimension that contribute to the achievement of the **Sustainable Development Goals of the UN's 2030 Agenda**.

The project selected to offset the 42,532 tons of CO<sub>2</sub> emissions, resulting from one year of Dekton production, has a direct impact on sustainable development by **supporting the local economy, providing training and job opportunities**.



# Dekton

25  
Year  
Warranty  
DEKTON

**DEKTON**<sup>®</sup>  
Designed by COSENTINO

## Innovative design

Dekton is a sophisticated blend of over 20 minerals extracted from nature. Its production process is the result of years of research, development, and innovation in the manufacturing of glass, state-of-the-art porcelain and quartz surfaces.

Electron microscopy makes it possible to appreciate the reduced porosity of the material, a consequence of the sintering and ultracompaction process exclusive to Dekton. This reduced porosity and the absence of micro-defects causing stresses or weak points are the distinguishing features of Dekton.



→ Countertop and flooring: Dekton VK03 Grigio



→ Countertop, island kitchen and cladding: Dekton TK05 Sabbia/ Countertop and island kitchen: Dekton VK04 Grafite

## Sintered Particle Technology

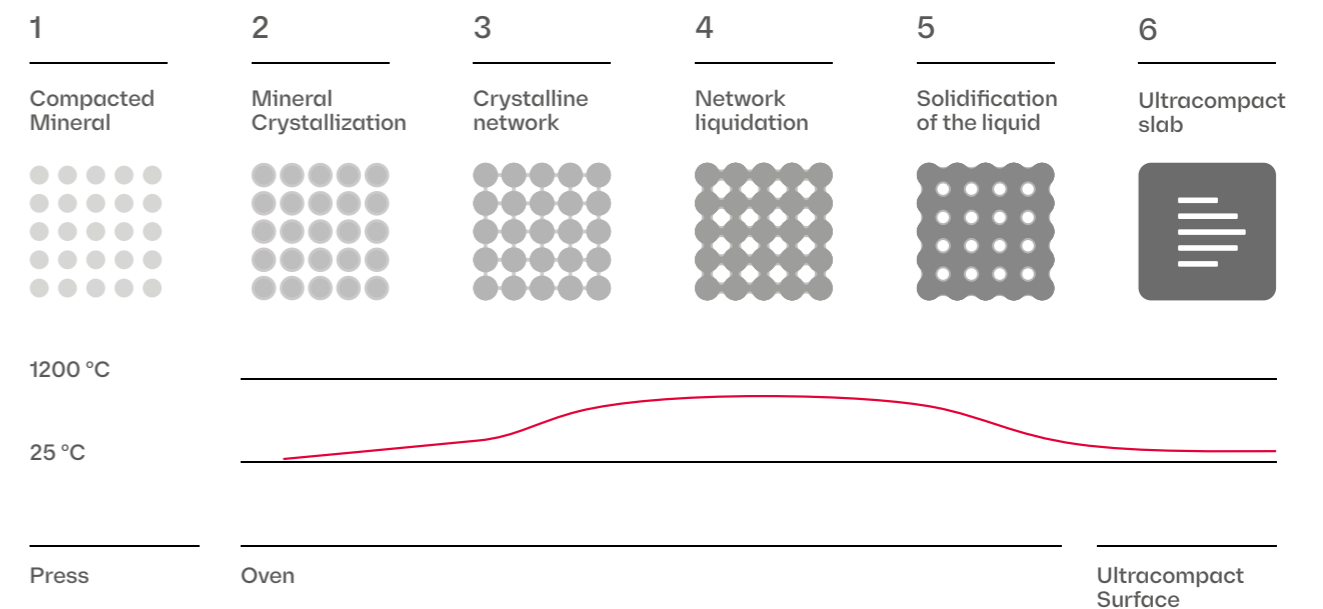
Dekton uses an exclusive SPT in its manufacturing, capable of sintering mineral particles, bonding them together and compacting their internal structure. This innovative technological process mimics and accelerates the processes that natural stone undergoes when exposed to high pressures and temperatures for millennia.

Dekton emulates in a few hours what nature takes millennia to do, thanks to the exclusive SPT technology.

- The furnace has a length of 180 meters.
- Temperatures reach approximately 1250°C.
- Total processing time depends on the thickness of the slab (about 4 hours).

## Safety in facades and cladding

In order to reinforce safety in ventilated facades and interior cladding, there is the possibility of adhering a safety mesh behind the Dekton slab, specially developed to prevent falls due to breakage. It is a 300 g/m<sup>2</sup> fiberglass mesh adhered to the material with epoxy resin. Safety is one of Cosentino's main concerns.





**Dekton Product features**

Dekton has all the technical specifications required in a high resistance surface to materialize any interior and exterior residential or commercial design project.



**Low water absorption**

Dekton's water absorption is negligible so it does not undergo any expansion movement due to it.



**Highly resistant to ultraviolet (UV) light**

Dekton is highly resistant to UV light and will not fade or degrade over time in any kind of outdoor application.



**Superior mechanical resistance**

Dekton's variety of thicknesses allow it to be used in applications where resistance to wind or impact are a project requirement.



**Fireproof material**

Dekton can withstand high temperatures without burning, scorching or cracking. European Standard EN 13501 and ASTM E84 testing classifies Dekton as a noncombustible material.



**Color durability**

Dekton's control of pigmentation and decoration in the manufacturing process provides better color consistency from one slab to another, resulting in a long lasting product that will not fade over time.



**Scratch resistant**

Dekton is one of the most scratch resistant surfaces on the market today. It has a rating of seven (7/10) on the Mohs scale for mineral hardness.



**Dimensional stability**

Dekton expansion is minimal so it can be installed with thin joints between panels. These joints will keep their width in all conditions.



**Resistance to freezing and thawing**

Dekton's resistance to durability tests in freezing and thawing situations and its application in various weather conditions prove its high performance.



**Abrasion resistant**

Dekton is even more resistant to abrasion than granite and porcelain, making it the ideal surface for facades or high-traffic flooring in commercial applications.



**Maximum fire and heat resistance**

Dekton has been successfully installed on facades in areas exposed to high temperatures.



**Easy cleaning and low maintenance**

Most graffiti can be removed from Dekton with standard cleaning products. Maintenance costs are reduced.



**Stain resistant**

Dekton is resistant to stains from a variety of sources so they can easily be removed without altering the surface's finish.

# Dekton Slim Protek

**DEKTON® SLIM**  
Designed by COSENTINO

High aesthetic value and performance in vertical cladding and furnishings.

**Minimum Thickness of 4mm → Large Format & Performance**

**01 → Large format and minimum number of joints**

Its large format of up to 320 x 144 cm covers large surfaces, minimizing the number of joints and therefore, dirt.

**02 → Easy Installation**

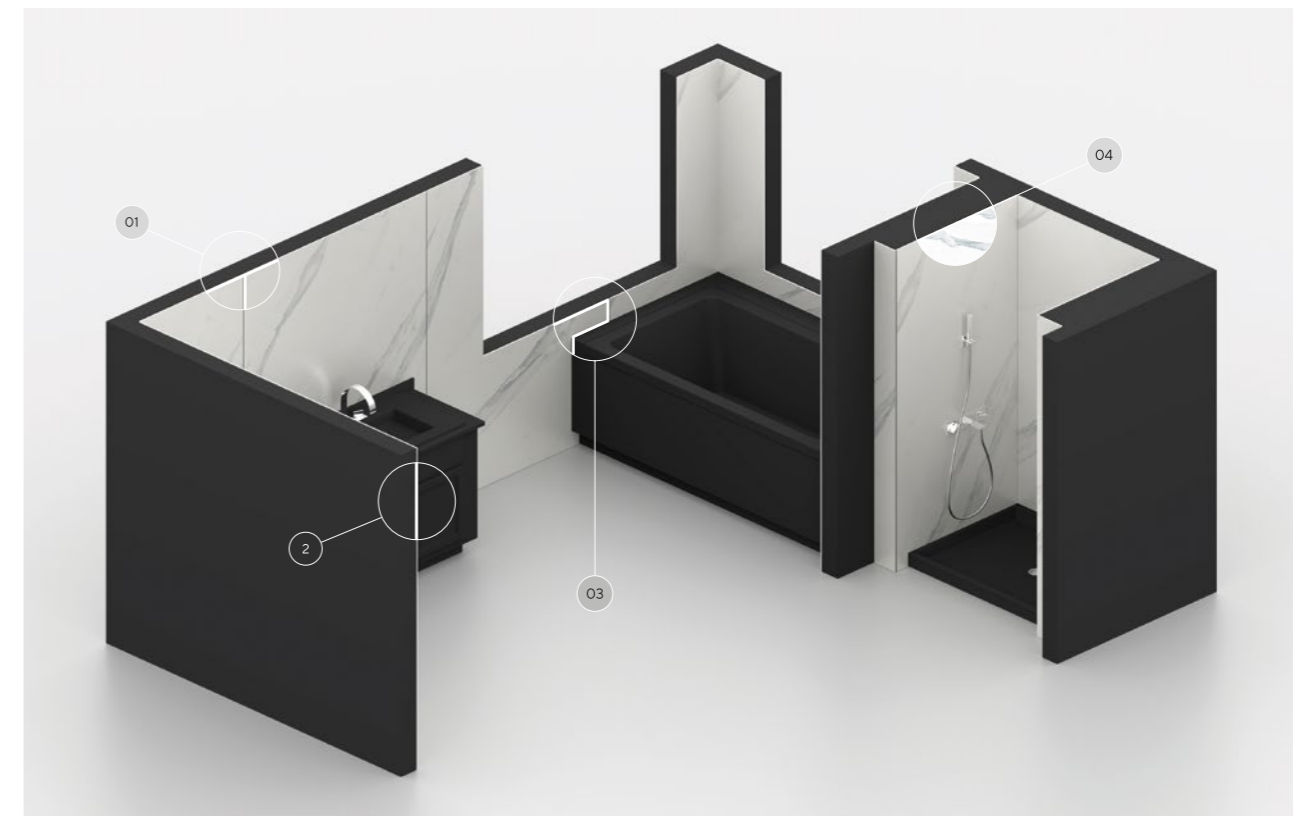
Having such a light format, but with so many possibilities, simplifies everything. Its thin thickness allows for quick cutting and on-site adjustments with ceramic tile tools.

**03 → Design without limits**

Dekton Slim Protek is very easy to work with and can be cut to size. It adapts to all spaces.

**04 → Maximum resistance to humidity**

Dekton Slim Protek is the ideal ultra moisture and stain resistant coating for bathrooms. A high performance product that requires no more maintenance than a simple damp cloth.

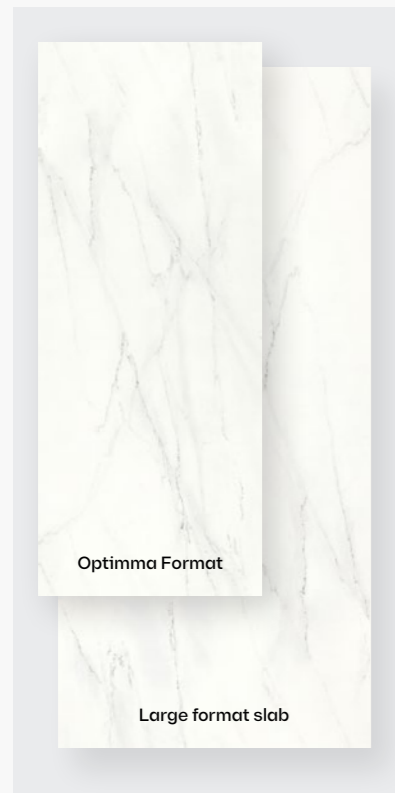


Dekton features

## Dekton Formats

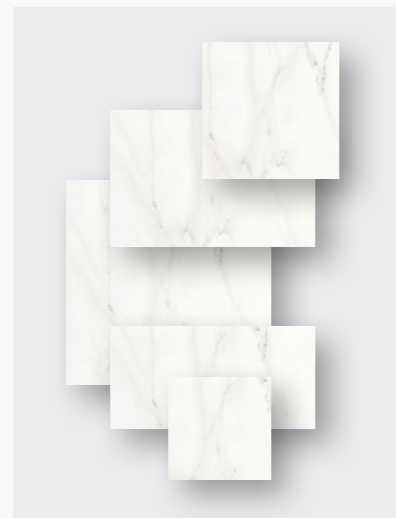
Adaptable and versatile.  
In any space.

Dekton offers a variety of standard sizes, custom sizes and thicknesses to meet the functional and creative needs of the designer in any interior or exterior project, no matter how complex.



### Large format

Optimma Format → 260 x 100 cm  
Large format Slab → 320 x 144 cm



### Other formats

- 106 x 71 cm
- 142 x 106 cm
- 142 x 106 cm
- 142 x 142 cm
- 142 x 71 cm
- 142 x 79 cm
- 159 x 142 cm
- 159 x 71 cm
- 71 x 71 cm
- Custom formats



### Thicknesses

- 4 mm
- 8 mm
- 12 mm
- 20 mm
- 30 mm

## Dekton Textures

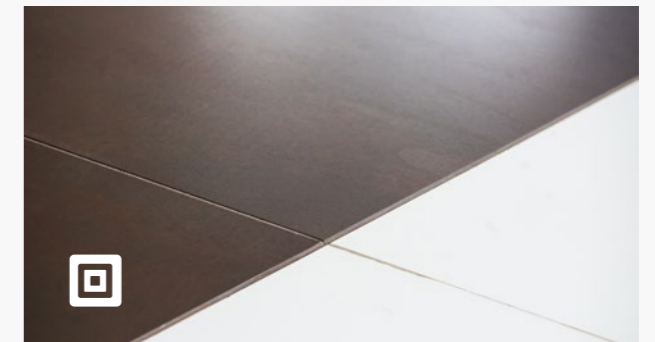
Different Sensations.  
Richness of Shades.

Dekton comes in different textures so that the only limit is the imagination: from the ultra-glossy finish, to matte or velvet textured options.



### XGloss

A luminous and dazzling finish achieved by mechanical polishing, without the need for enamels or other materials.



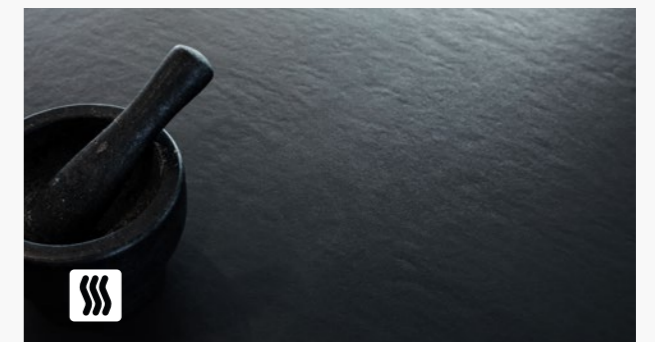
### Matte

The matte texture pursues a natural, shine-free appearance, ideal for achieving a harmonious and timeless finish. Most Dekton products are manufactured with this finish.



### Velvet

The materials chosen in Velvet create a feeling of warmth and comfort. This texture is perfect in classic colors with veins.



### Matte or Textured Velvet

Matte or Textured Velvet textures combine the warmth of velvet with the roughness of a textured, imperfect material. It is ideal for emulating a realistic finish, with the advanced features of Dekton.

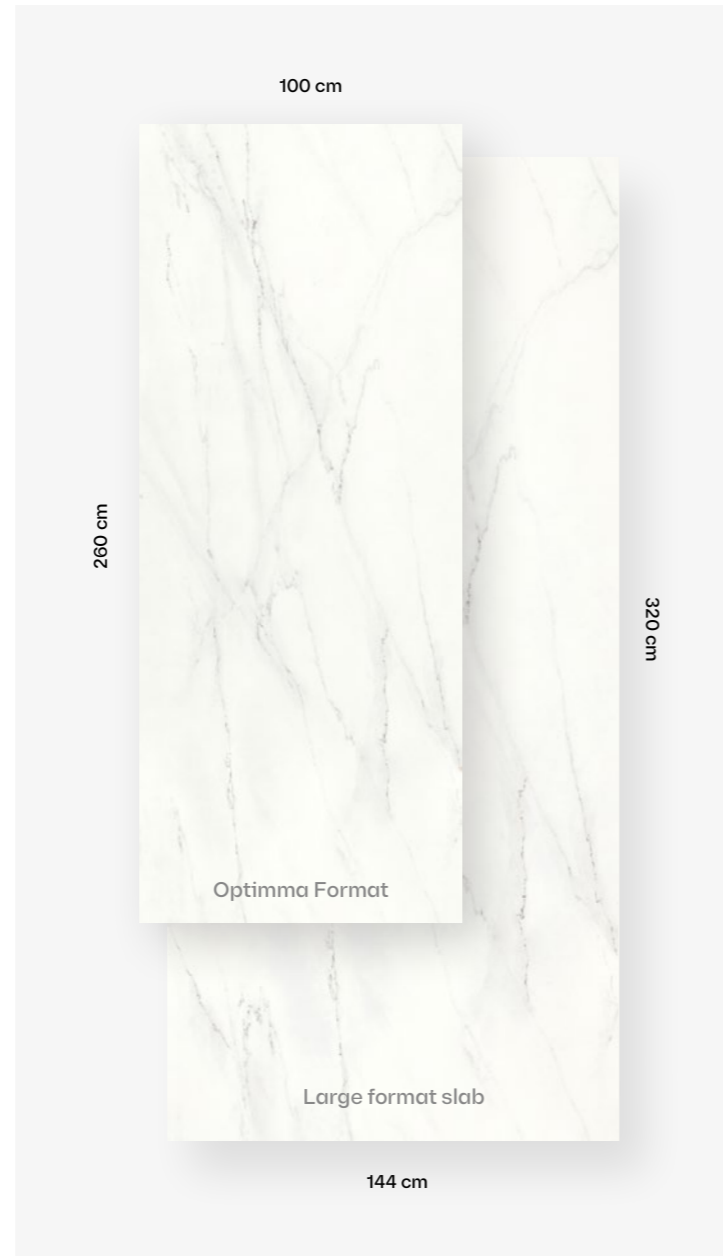
# Optimma

## New optimized Dekton format

### The ultimate interior cladding solution

The Dekton slab has been optimized with its most common applications in mind to create a new format with improved cost, design, installation and handling. Introducing our first Optimma family format specifically for cladding:

Optimma format :  
260 cm x 100 cm x 4 mm.



### 260 x 100 cm in 4 mm thickness

The slabs are created in 4mm thickness, which gives it a lightness that allows easy handling, and in case of need, it can be easily cut to adapt the product to all spaces.



### Cost Efficiency

The sizes are optimized to the most common cladding standards, allowing us to avoid waste, which in turn reduces price.



### Design with Purpose

The slab has been created to take advantage of its total height, which makes it much easier to cut it for cladding.



### Easy to Install

The product is smaller and lighter, which makes it easier to use, transport and handle. Cutting can be done with simple tools. The edges are already bevelled and the piece is always meshed.



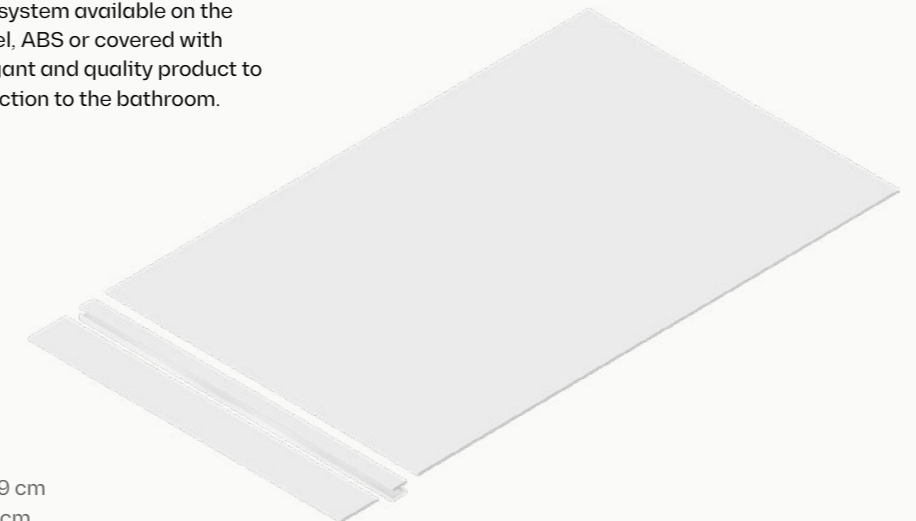
### Design Match

The design has been conceived to place the boards vertically to create a continuous design.

# Rainfloor

## Shower floor

Solution according to the different design trends in the shower area. Combine Dekton with any evacuation system available on the market: grilles in steel, ABS or covered with Dekton itself. An elegant and quality product to give a touch of distinction to the bathroom.



Dekton Grip/Grip+  
Length from 71 to 159 cm  
Width from 71 to 142 cm



# Dekton Design Match

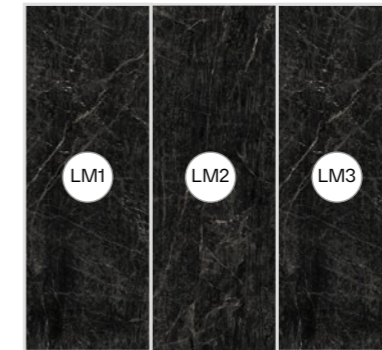
There are designs that leave their mark. Veins that run along walls and continue on floors and facades with patterns that would be impossible for a natural stone, but not for Dekton.



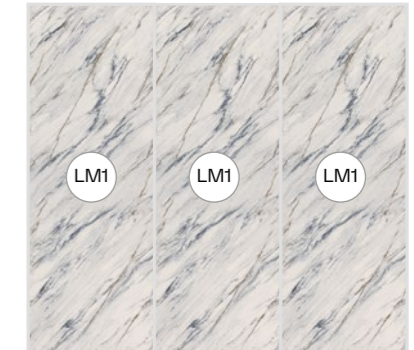
## Lineal Match

We present a new concept that includes references of the same colour to create a fluid and continuous atmosphere. Focused on large-area flooring and vertical cladding applications.

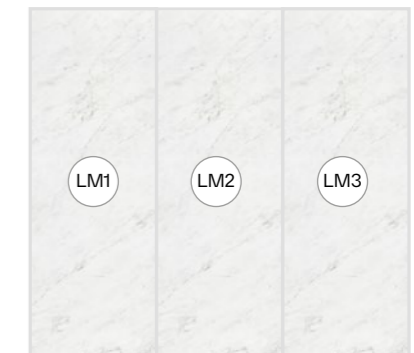
A new design conceived to position the slabs vertically. The slab is rotated 180° in each of its iterations, thus creating a continuous and harmonious design.



**Dekton Somnia**  
Available in 4, 8, 12 mm and  
Optimma format 260 x 100 x 0.4 cm



**Dekton Trance**  
Available in 4, 8 and  
12 mm thicknesses



**Dekton Marina** [NEW](#)  
Available in Optimma format  
260 x 100 x 0,4 cm (LM1, LM2  
and LM3)

## Book Match

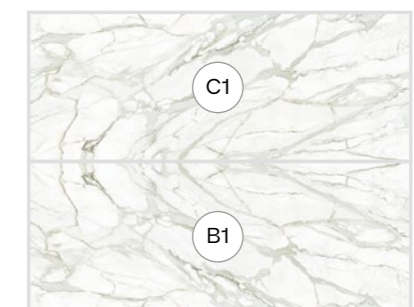
Based on some of our designs, we have created unique, symmetrical and interchangeable references that allow compositions and designs to be made where the veins have continuity between different pieces.

Each piece has a unique combination of numbers and letters to select the patterns that best suit your needs according to colour and available thicknesses.

Material on request, check availability.



**Dekton Awake**  
Available in 4, 8 and  
12 mm thicknesses.



**Dekton Lucid and Morpheus**  
Available in 8, 12 mm and  
Optimma format 260 x 100 x 0.4 cm

Ukiyo: The inner texture

New Collection

Dekton  
Ukiyo



**Cosentino x Claudia Afshar**

A new Dekton collection designed by Claudia Afshar, inspired by the Japanese concept Ukiyo.

Luxury interior design firm, Claudia Afshar Design, is led by this London-born and Los Angeles-based designer. Alongside her talented team and global projects, Afshar creates extraordinary environments that redefine opulence.

Both brands pay meticulous attention to detail and are focused on providing impeccable craftsmanship. Dekton Ukiyo features colour-filled structured patterns that offer a sensory experience.

Step into a world where time stands still, and the present moment is all that matters.

Experience the beauty of living textures crafted by nature.



**The inner texture**

Two structured patterns available in five colours specially designed for indoor vertical cladding use. Dekton developed textures in collaboration with the designer Claudia Afshar, creating beautiful and unique spaces.

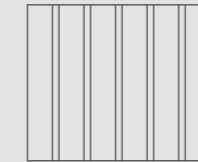
**Ukiyo GV2**

**Thicknesses:**  
0.8 cm and 1,2 cm

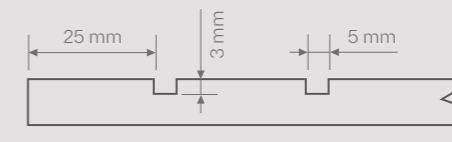
**Finish:** Mate

**Dimensions:**  
450 x 3.000 mm

**Surface groove: 25 mm**  
**Fluting 5 mm**

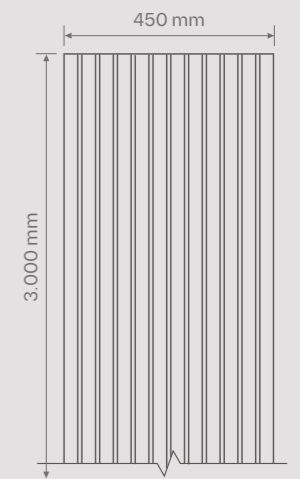


**Cross section detail**



→ The number of surface grooves is 15 and the spacing between them 25 mm.

→ The tile starts in "enamel" and ends in surface groove.



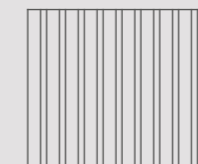
**Ukiyo GV3**

**Thickness:** 1,2 cm

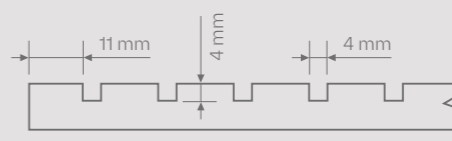
**Finish:** Mate

**Dimensions:**  
450 x 3.000 mm

**Surface groove: 11 mm**  
**Fluting 4 mm**

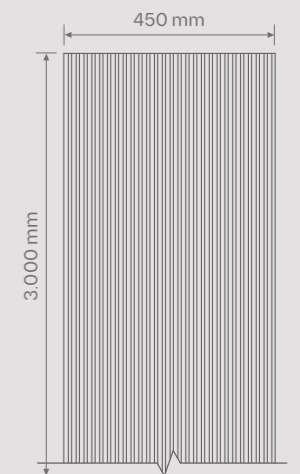


**Cross section detail**



→ The number of surface grooves is 30 and the spacing between them 11 mm.

→ The tile starts in "enamel" and ends in surface groove.







→ Cladding Dekton Ukiyo Kreta GV2 and Dekton Kreta / Flooring Dekton Albarium 22 / Countertop Scalea Arabescato



### Bromo

A dark grey shade inspired by slate featuring subtle faded graphics and a carefully crafted texture with a natural aesthetic.



Ukiyo GV2

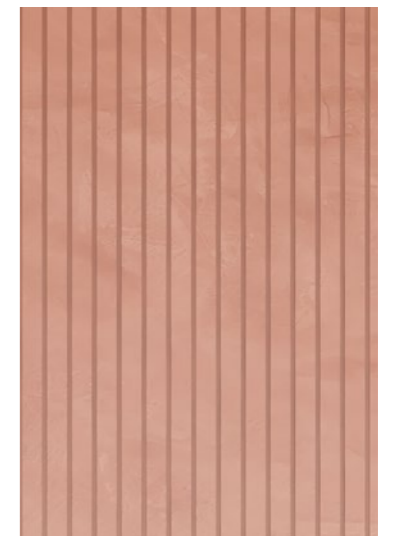


### Umber

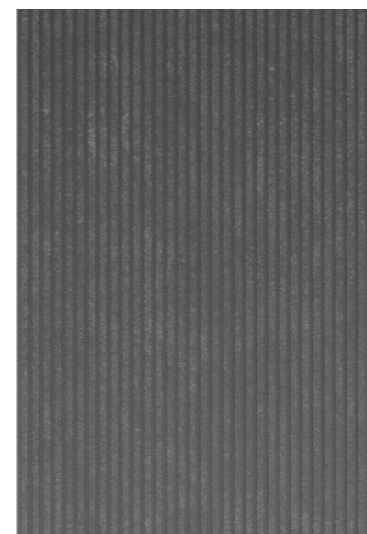
This terracotta colour features a natural reddish pigment creating a warm, textured surface that adds character to any space.



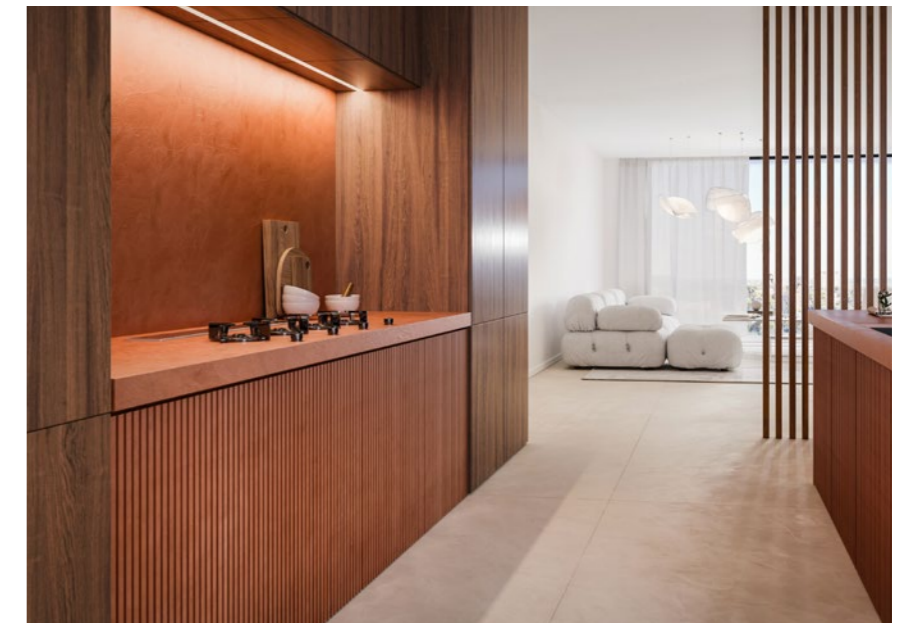
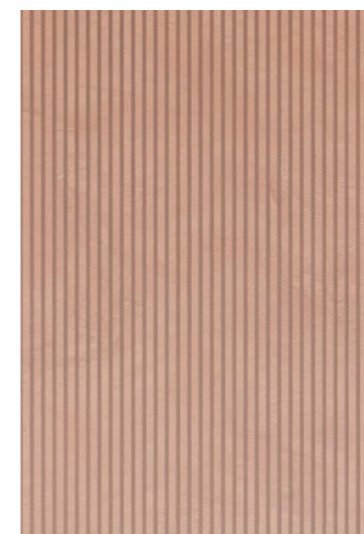
Ukiyo GV2



Ukiyo GV3



Ukiyo GV3





### Nacre

A cream shade characterized by subtle details from fine micro-concrete to lime plastering.



### Ukiyo GV2

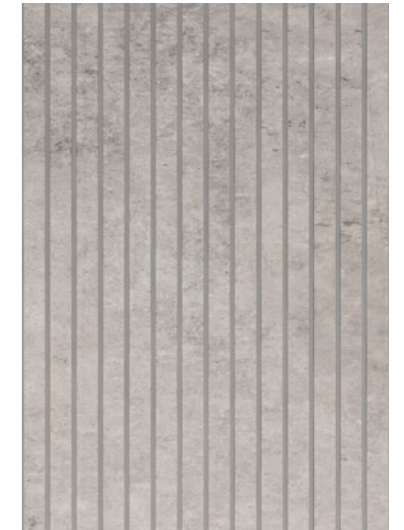


### Kreta

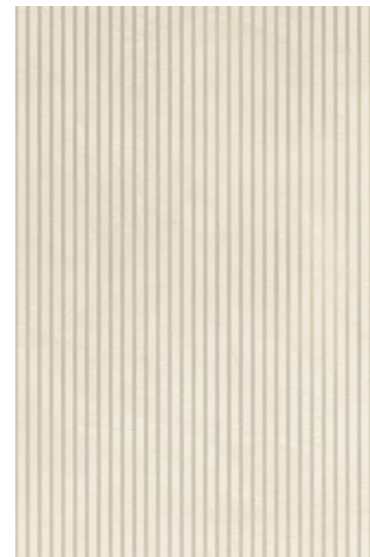
Inspired by cement, this design is even and controlled. It can create lighter or darker spaces.



### Ukiyo GV2



### Ukiyo GV3



### Ukiyo GV3







Ukiyo GV2



Ukiyo GV3



**Rem**

Its intricate design with brown and grey veining and hints of gold reflects the linear structure of Calacatta Lincoln marble.

**Disclaimer**

This product is especially designed for indoor vertical cladding use. Do not use as a horizontal surface.

There are limitations for use on exterior cladding as stated in the product's User Manual regarding the general applications of Dekton products. Improper use outside the limitations may result in deterioration of the surface appearance of the product.

Claims related to this deterioration of appearance in applications other than the intended use are not covered by the Cosentino Warranty.

For further information, please refer to the Product Specification and User Manual available from your Cosentino sales representative.



# Pietra Kode

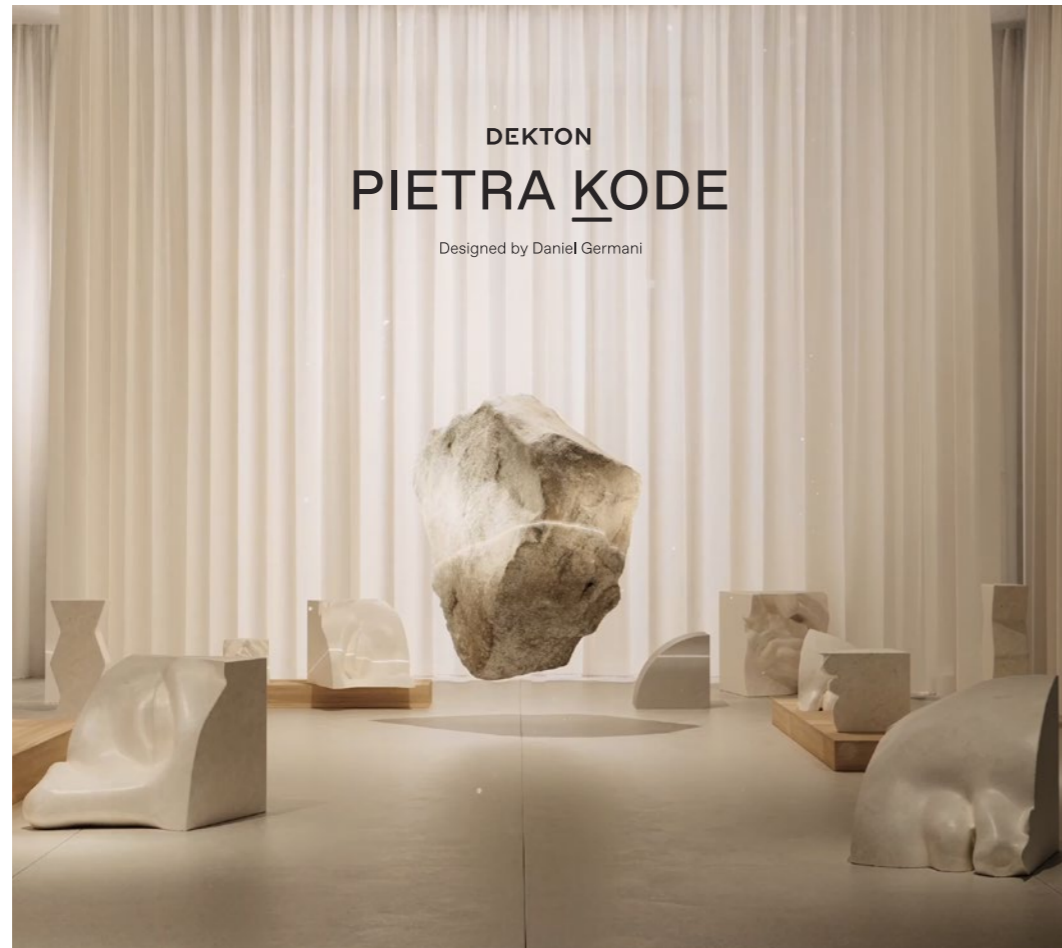
Introducing Pietra Kode: the Italian stones of yesteryear recoded by Dekton for contemporary architecture and design through three series.



We've decoded the stones that dazzled the architects of yesteryear to meet the needs of modern architecture and design. We decipher their molecular structure to recodify it through the exclusive Dekton technology, improving its attributes and transforming it into a high performance ultracompact stone.

Two thousand years ago, the Roman architect Vitruvio developed three principles that have guided the evolution of architecture until present day.

Reformulated and given a new meaning that meets the demands of architecture and design in the future while keeping the code of shared beauty that has evolved through the centuries, connecting classicism and modernity.



## Pietra Kode is a journey through history, timeless architecture and design.

Research is at the core of what we do. Studying behaviors, understanding the demands of the market and always trying to be one step ahead. The question then became: How do we develop a collection that improves upon nature's masterpieces? How do we capture and reinterpret upon all its glorious imperfections? How do we embark on Pietra Kode?

This journey takes us to Italy. Vicenza, Travertino and Ceppo are at the center of this timeless collection. Stones that makes us travel through space and time. Drawing on the very best nature has to offer, Pietra Kode is a collection engrained in Italian classical architecture, with an eye towards the future, one that fits seamlessly into the codes of contemporary design.

Pietra Kode is a versatile tool in the hands of architects and creatives alike. Facades, flooring, bathrooms, kitchens, furniture and many more applications come to life through Dekton's unmatched performance.

**Daniel Germani**



## Beauty, firmness and utility

Principles which make up the DNA of Dekton. But do these canons of classic beauty make sense today? Are they relevant? What about firmness? Are we faced with new environmental challenges that demand a change in material resistance? What was once useful, is it still? Should it also answer concepts such as sustainability to be truly useful?







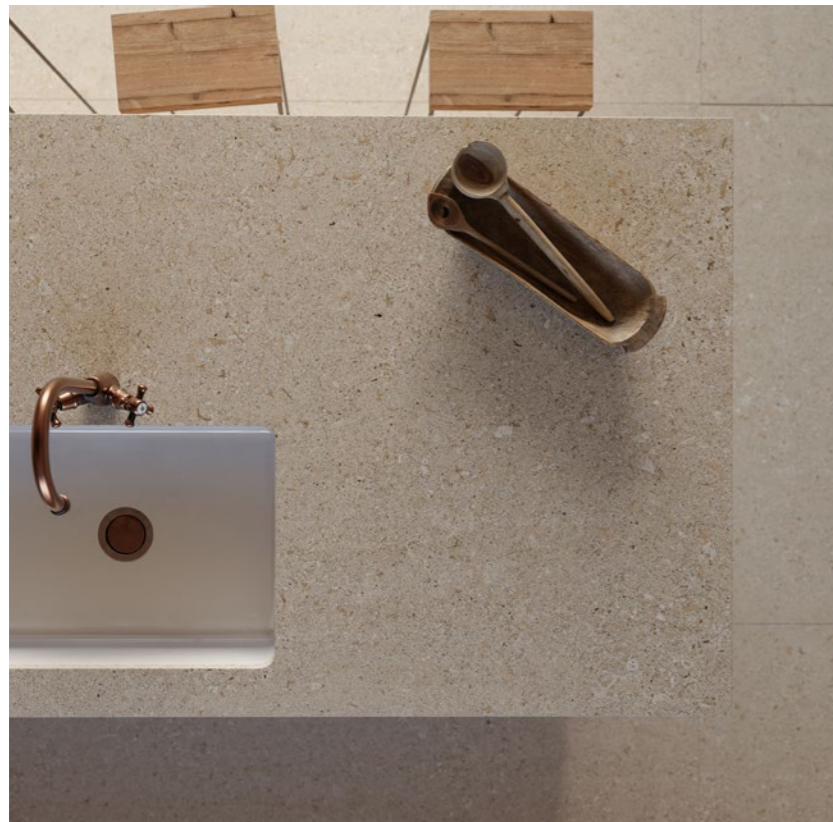
**VK01 Nebbia**

A creamy white fine-grained base splashed with warm taupe, this versatile color is ideal for facades, flooring, and any interior or exterior cladding project. It reinterprets the texture of Grigio Alpi, a type of Vicenza stone with macrofossils that has been quarried in Italy since Roman times. Its design makes it especially suited for applications that require continuity in design and edges.



**VK03 Grigio**

A dance of gray shades with warm accents, it perfectly combines with cream and taupe tones as well as woods. VK03 Grigio is inspired by Grigio Alpi stone, a type of Vicenza with macrofossils made popular by Renaissance architect Andrea Palladio, who used it in villas and palaces in the region of Vicenza. Its design makes it especially suited for applications that require continuity in design and edges.



**VK02 Avorio**

In ancient times, silver was considered a gift of nature created by the influence of the moon. This legend lives on in Argentium, a perfect matt grey that can be combined with both warm and cold atmospheres. Its trowelled structure, typical of lime plastering, provides an overwhelming personality to the series.



**VK04 Grafite**

Its dark base, which intermingles black and gray tones and presents cloud-shaped whitish and reddish patches reinterprets the texture of dark, fine-grained limestone. Its design makes it especially suited for applications that require continuity in design and edges.

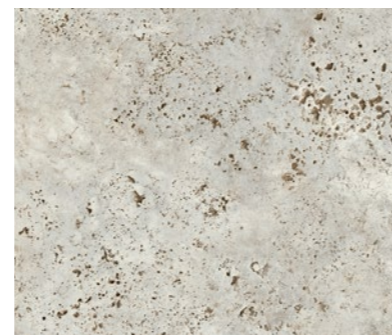






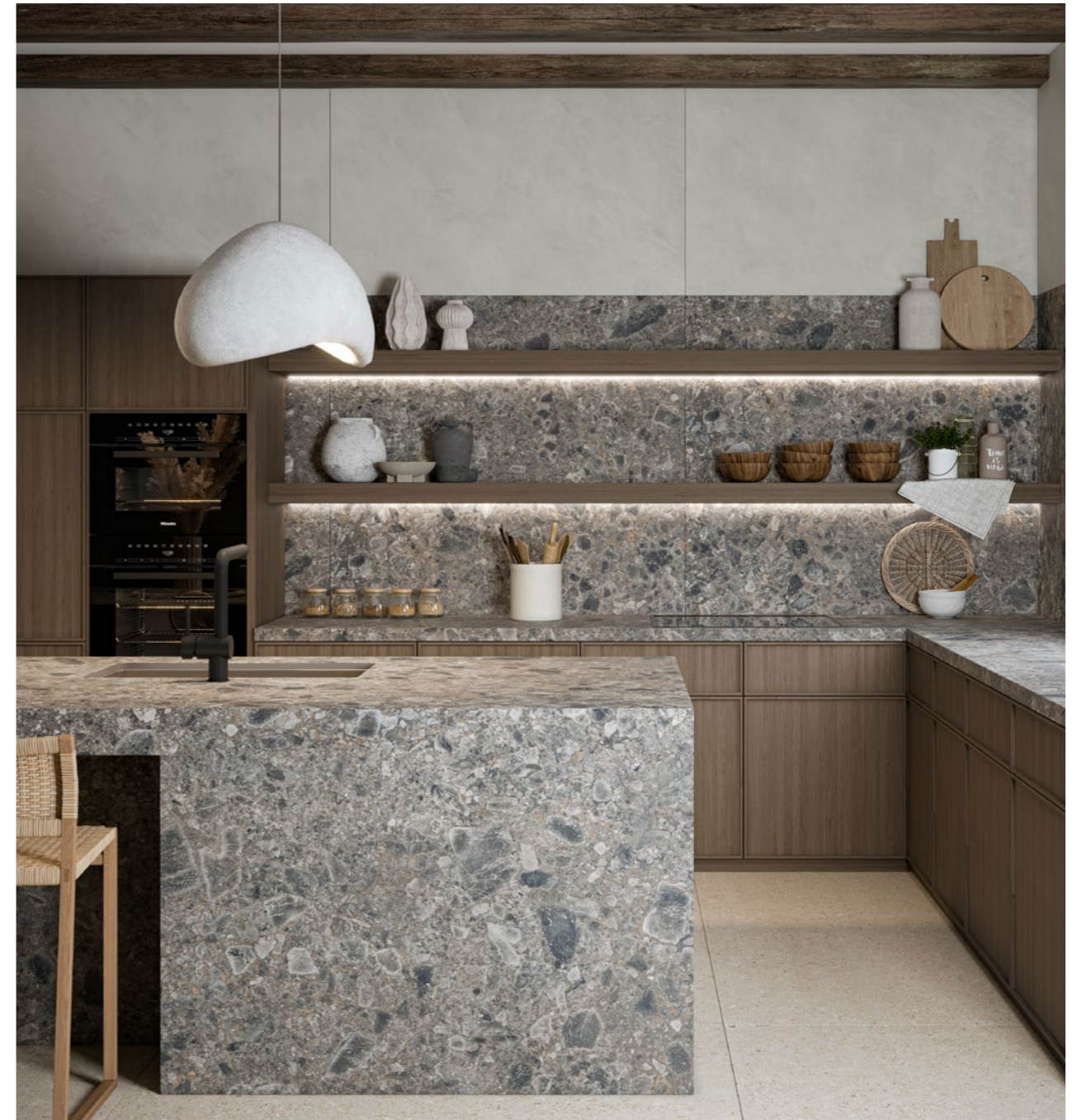
**TK05 Sabbia**

The veins reinterpret Italian Travertine run through each piece in perfect chaos, filling it with nuances. This attractive chromatic recodification of natural stone maximizes the strength and design of the original, dotting incomparable beauty and resistance, perfect for rustic or natural environments.



**TK06 Marmorio**

It is the quintessential Roman stone. Its porous striped structure gives an elegant, bright and lightweight look to any design and takes its inspiration from Travertino Navona, a natural stone quarried near Tivoli, east of Rome.



**GK07 Ceppo**

The characteristic multiform structure and gray/blue tones of Italian Ceppo di Gré inspire this unique color. Ideal for both interior and exterior spaces, its atemporal design makes it a perfect choice for classic or modern designs.





# Dekton - New launches

## Ukiyo Series



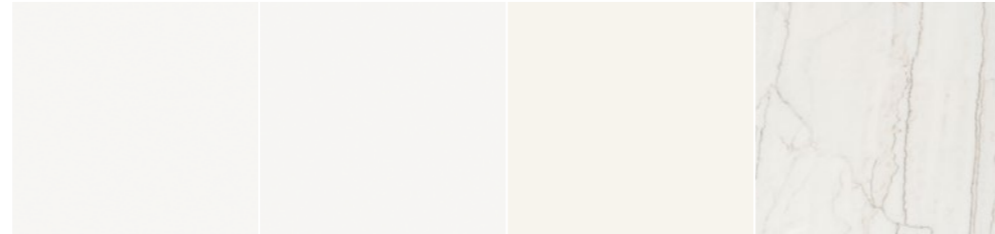
→ Flooring and bath top Dekton Nacre/ Cladding Dekton Ukiyo Umber GV2



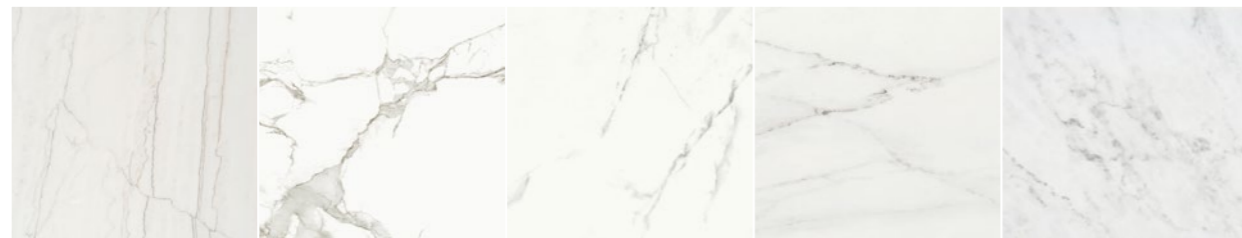
→ Flooring Dekton TK06 Marmorio / Cladding Dekton Ukiyo Rem GV2 and Dekton Rem



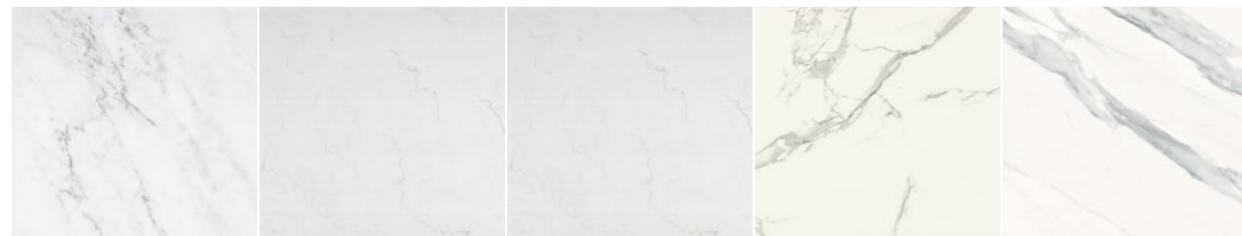
# Dekton Collection



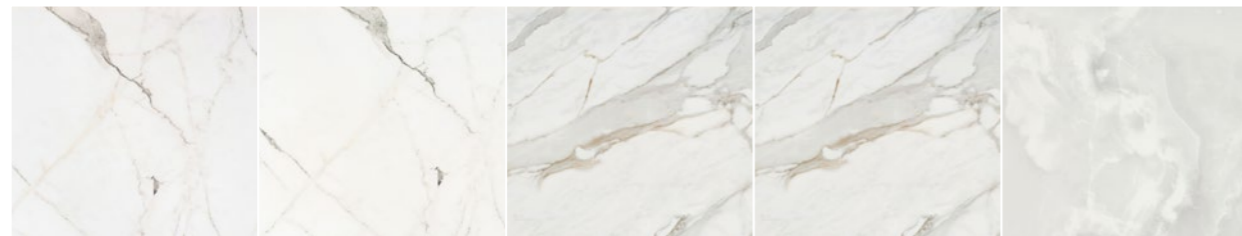
Uyuni



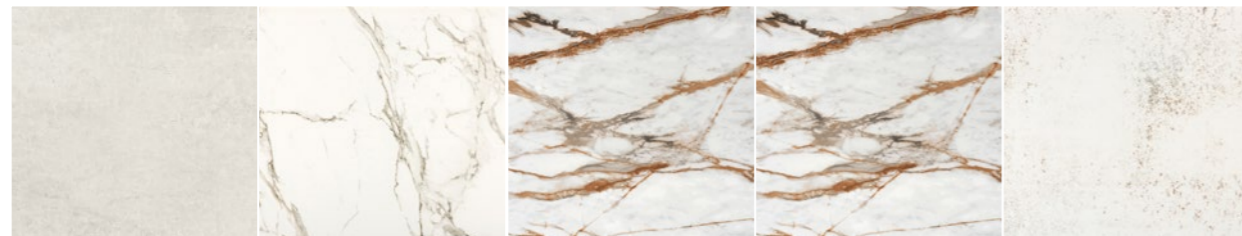
Neural



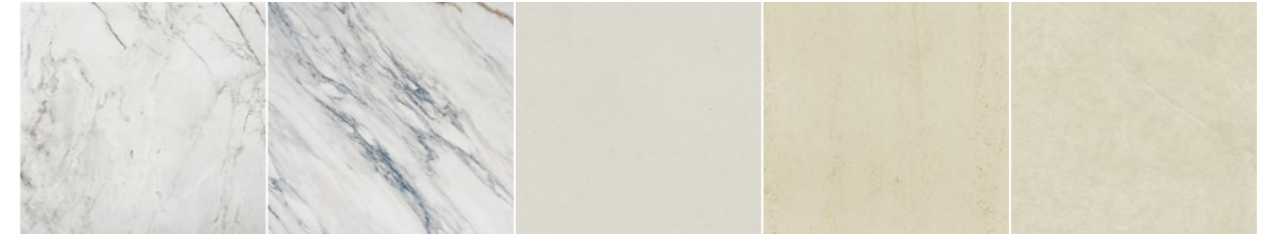
Salina



Vigil



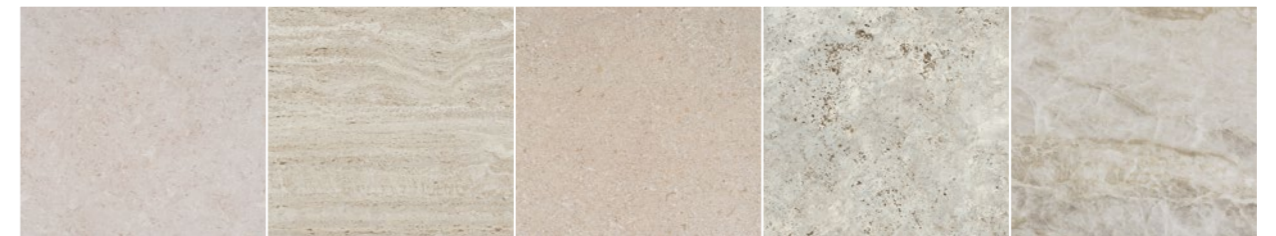
Lunar 22



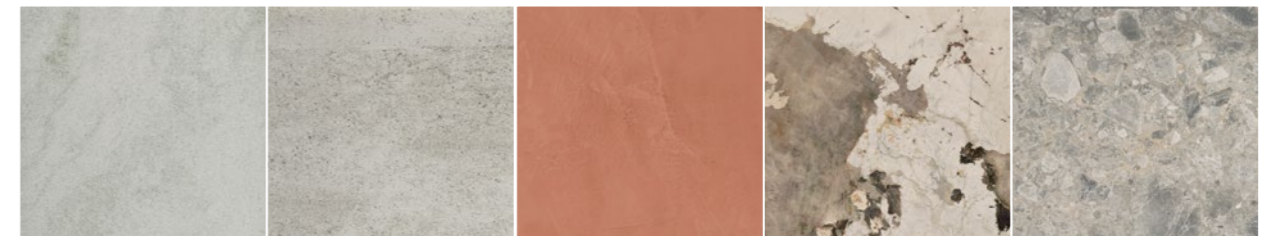
Bergen



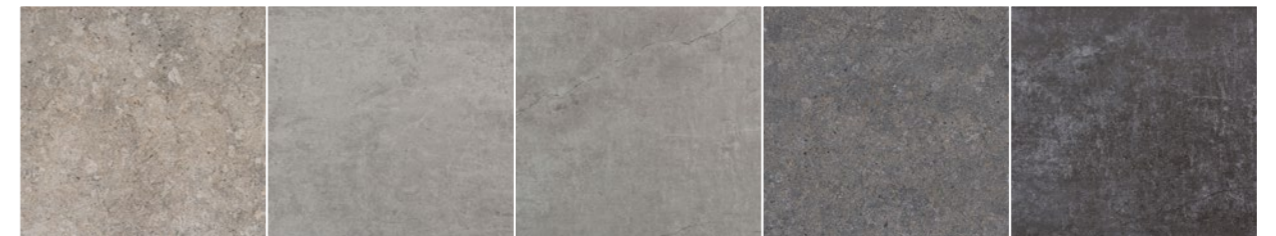
Nacre



VK01 Nebbia



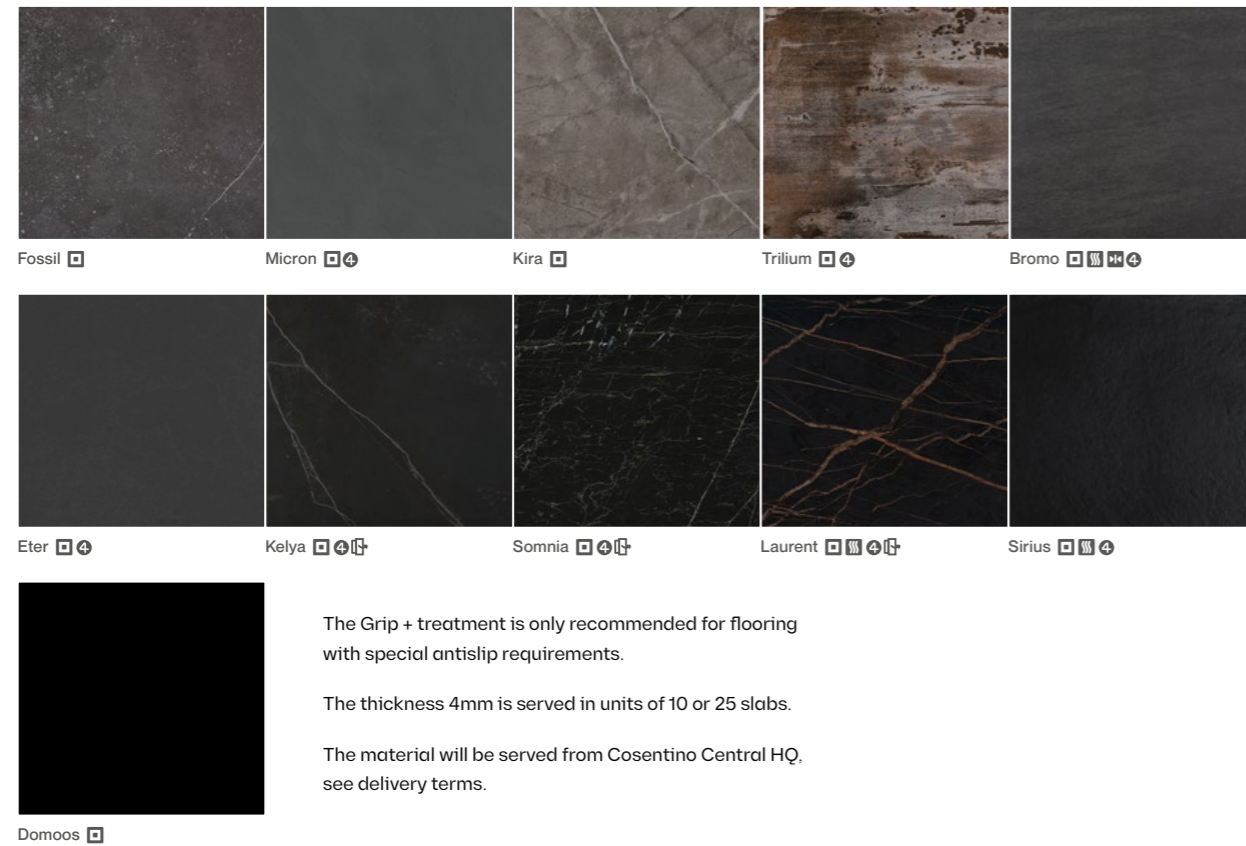
Kovik



VK03 Grigio



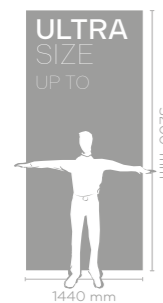
# Dekton Collection



# Dekton Collection

GROUP 0	GROUP 1	GROUP 2
AERIS	BROMO	ALBARIUM 22
DANAE	FOSSIL	ARGENTIUM
ETER	KAIROS 22	VK02 AVORIO
KEON	KOVIK	GK07 CEPPO
MOONÉ	KRETA	DOMOOS
	NILIUM 22	VK04 GRAFITE
	SASEA	VK03 GRIGIO
	SIRIUS	KELYA
		KIRA
		LAGUNA
		LAOS
		LUNAR 22
		MARINA
		TK06 MARMORIO
		MICRON
		NACRE
		VK01 NEBBIA
		TK05 SABBIA
		SOKE
		TRILIUM
		UMBER
		ZENITH

GROUP 3	GROUP 4
AURA 22	MORPHEUS BOOK MATCH <a href="#">NEW</a>
DAZE	SOMNIA LINEA LMATCH <a href="#">NEW</a>
ENTZO 22	
LAURENT	
MORPHEUS	
NEURAL	
OPERA	
REM	
REVERIE	
SOMNIA	
UYUNI	



- POLISHED
- SMOOTH MATT FINISH
- TEXTURED FINISH
- VELVET
- OPTIMMA FORMAT
- DEKTON GRIP+, THE ANTI-SLIP SOLUTION FOR WET AREAS
- DEKTON SLIM 4MM
- DEKTON QUICK CUT TECHNOLOGY





# XGloss Collection

**GROUP 1**

DUNNA \* 

**GROUP 3**


MALIBU \*   

NATURA 22 \*   

SALINA \*   

**GROUP 4**


ARGA \*   

AWAKE \*   


BERGEN \*   

HALO \*   

HELENA 22 \*   

KHALO \*  

LIMBO \*   

LUCID \*   




TAGA \*  


TRANCE \*   

VIGIL \*   

**GROUP 5**

AWAKE BOOKMATCH \*   

LUCID BOOKMATCH \*   

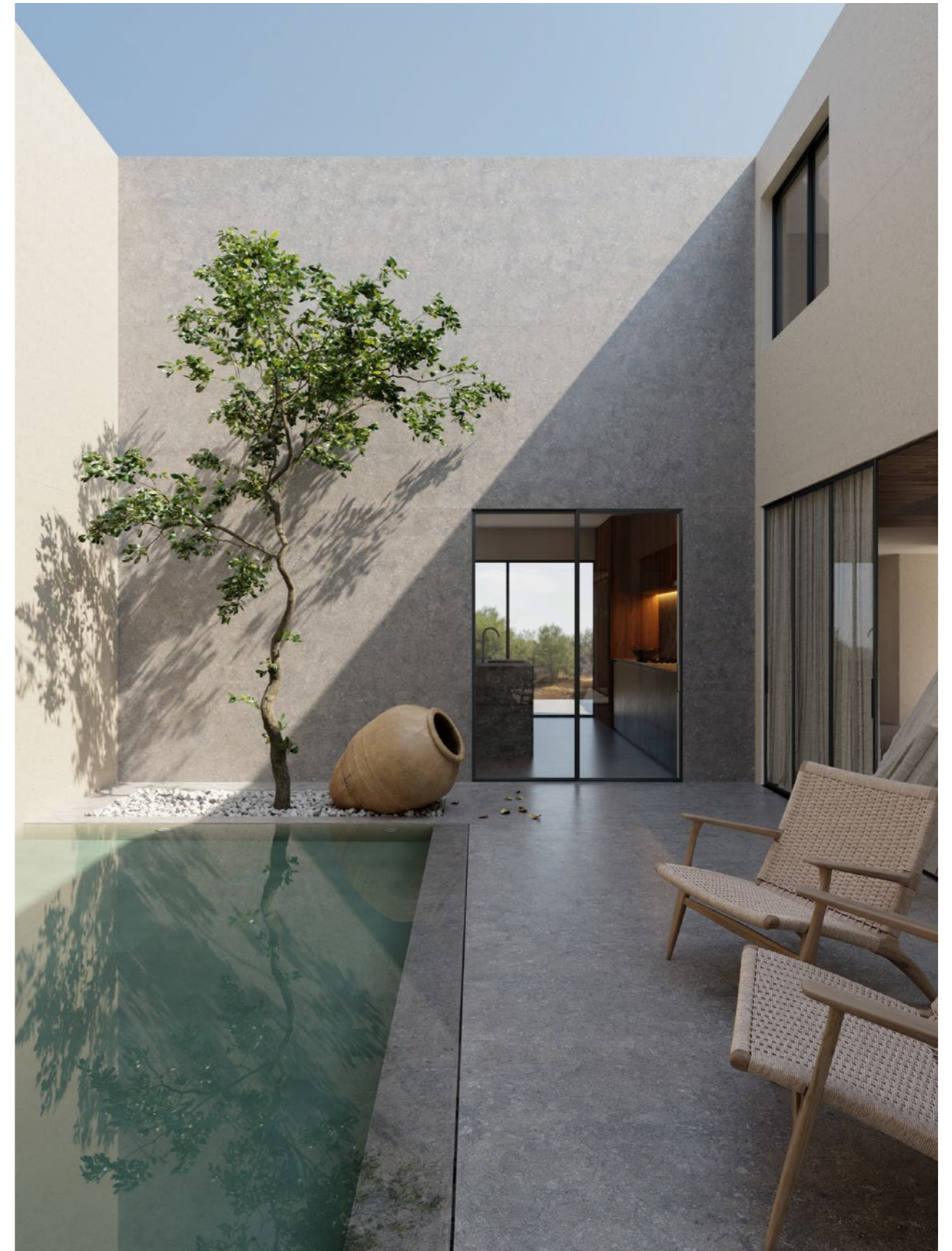
TRANCE DESIGNMATCH \*   

Due to its intense shine XGloss requires special maintenance and care, particularly with the darker shades, where its intense black colour can reveal small details.

The provided samples don't guarantee that the supply will be absolutely identical in tone and veins. See General Conditions of Sale.



→ Countertop and cladding Dekton XGloss Vigil



→ Flooring and cladding Dekton VK04 Grafite





# Silestone

The new mineral  
hybriq surface

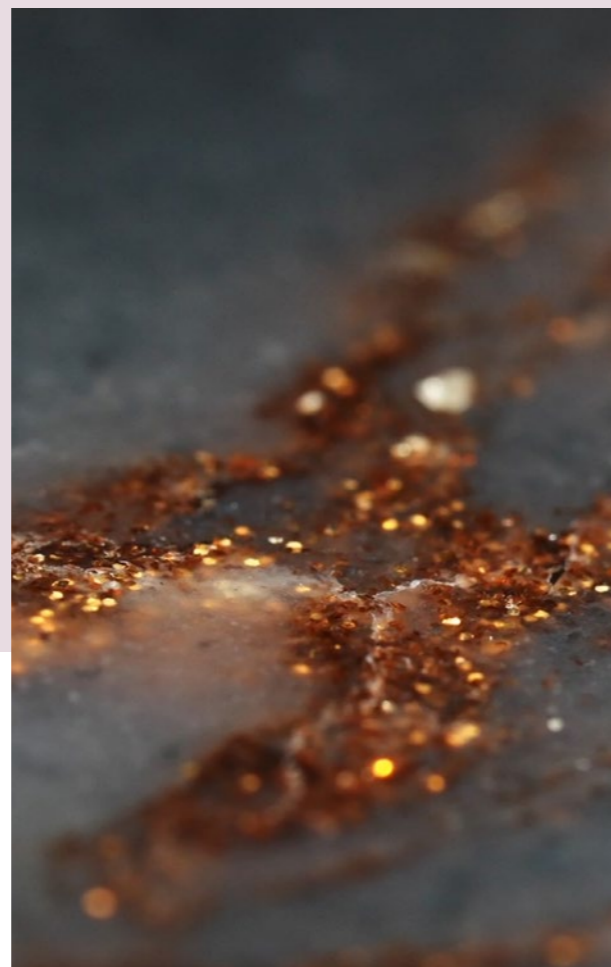
Silestone is a low-silica mineral surface composed of premium minerals and recycled materials, powered by the revolutionary Hybriq+® technology.

## Silestone advantages

Silestone is extremely durable in kitchens, bathrooms and other spaces exposed to constant activity and use. In addition, it offers an unlimited range of colors and textures.

Silestone has many advantages, including minimal maintenance, high resistance to stains and scratches, and a low fluid absorption rate. This resistance to fluids and its minimal joints make Silestone the ideal solution for places where liquids are present. Silestone is resistant and allows for prolonged enjoyment to last a lifetime.

The properties of Silestone are the result of constant years of innovation that guarantee maximum hygiene and safety.



## Acid and Scratch Resistant

Silestone has a high level of scratch and impact resistance, as well as resistance to external aggressors such as acids common in daily kitchen use.

## Impact Resistant

The high impact resistance of Silestone allows the handling of hard objects (pots, pans, trays, etc.) with total peace of mind.

## Stain Resistance

Silestone is a non-porous surface that is highly resistant to stains from coffee, wine, lemon juice, oil, vinegar, makeup and many other everyday products.

25 year  
warranty

silestone®





## Silestone Formats

Infinite possibilities for indoor applications.

Silestone is available in slabs up to 327 x 159 cm and in 30 x 30 cm, 40 x 40 cm, 60 x 60 cm, 60 x 30 cm and 60 x 40 cm tiles. They are marketed in thicknesses of 12, 20 and 30 mm. In addition, different pieces can be combined to simulate thicker edges.



### Large format

Jumbo Slab → 327 x 159 cm  
Standard Slab → 306 x 140 cm

### Jumbo Slabs

Cosentino offers Silestone slabs in Jumbo format (327 x 159 cms max.). This format allows for the creation of large surfaces with minimal jointing, design versatility, and better hygiene. This way, the slabs' use is optimized and waste minimized.



### Floor formats

- 30 x 30 cm
- 40 x 40 cm
- 60 x 60 cm
- 60 x 30 cm
- 60 x 40 cm
- Custom Size



### Thicknesses

- 12 mm
- 20 mm
- 30 mm
- Custom thicknesses adding different pieces

## Silestone Textures

Surface sensory perception.

In order to adapt to all styles, Silestone offers different textures for any of its applications. Polished, Suede or Volcano are three possibilities that make the imagination soar and bring to life countertops, floors or walls with the desired texture.



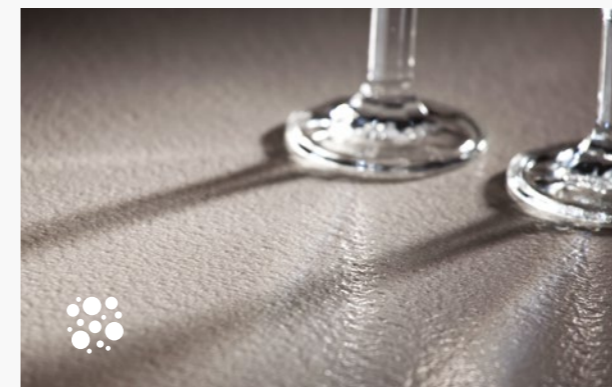
### Polished

Extreme shine, a smooth surface to the touch and a uniform, intense and consistent color.



### Suede

Extra matte finish, offers a flat, non-rugged surface, which conveys a unique experience to the touch for its beauty and fineness.

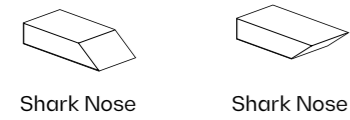
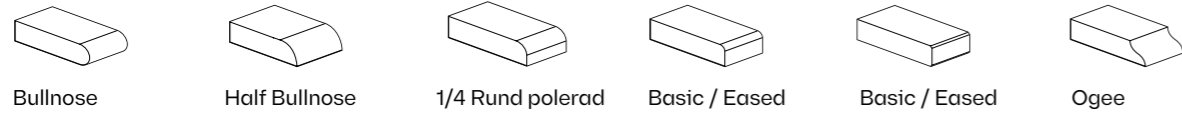


### Volcano

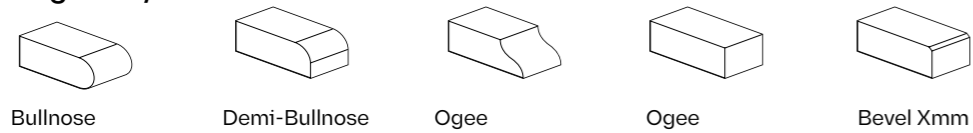
Rustic texture, rough to the touch, but soft at the same time, an attractive and pleasant to the touch surface



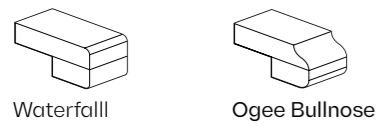
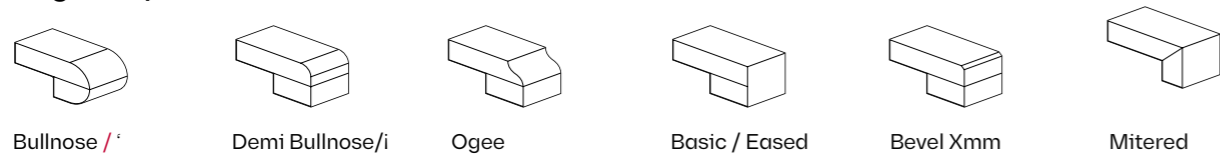
**Edges 3/4"**



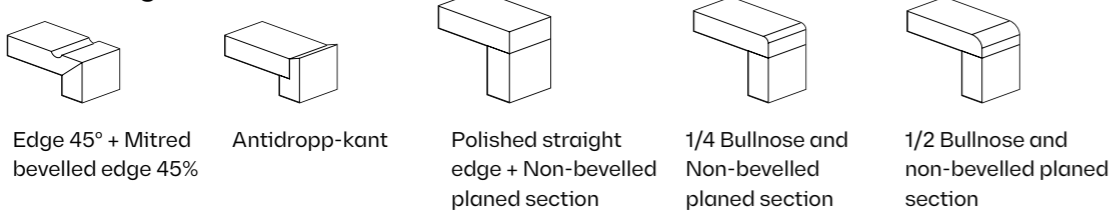
**Edges 1-1/4"**



**Edges 1-1/2"**



**Other edges**



# Edges

Customized cutting and polishing processes can be used for Silestone, creating edges of all types. This section details some of the most popular ones, but the possibilities are limitless.





**silestone**<sup>®</sup>XM

# INNOVATION RUNS IN OUR VEINS

MINERAL HYBRIQ SURFACES



## NEXT GENERATION SURFACES. HYBRIQ+ TECHNOLOGY Q10

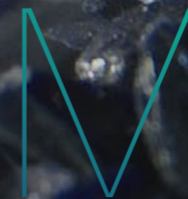
Our exclusive Hybriq+<sup>®</sup> technology enables the creation of surfaces with a maximum 10% of crystalline silica content, while maintaining high performance and excellent finishes.

**MAX. 10%**

## MINERAL IN THE INSIDE. PREMIUM MATTER SELECTION

A carefully selected range of premium minerals chosen for their design and capabilities giving Silestone XM its nuances, shine, color, depth and resistance.

**MINERAL**





# SILESTONE<sup>®</sup>XM IS THE DESIGN MINERAL SURFACE MADE OF PREMIUM MINERALS WITH LOW CRYSTALLINE SILICA CONTENT AND RECYCLED MATERIALS

Unique and personalized spaces, full of colors and depth in perfect balance where quality is paramount. Transform your home into an oasis of elegance that endures over the time.



## UNIQUE PATTERNS & DESIGNS

Design unique spaces full of details, sophistication and warmth.



## REAL FULLBODY

Full-body that allows for continuous finishes in edges and cuts.



## STONE NATURE LOOK & FEEL

Real depth and smooth texture that evoke the warmth of natural stone.



## MINERAL COMPOSITION

Example of high performance, resistance and durability.



## SUSTAINABLE INNOVATION

Manufactured with Hybriq<sup>®</sup> Technology: Maximum silica reduction.





→ Kitchen island: countertop and cladding Silestone XM Parisien Bleu



# NEXT GENERATION SURFACES

Our Hybriq+® technology drastically reduces the content of crystalline silica until 10% thanks to an exclusive combination of premium minerals and recycled materials, such as glass.

## Q10+



# MINERAL HYBRIQ SURFACES

Low-silica, durable, versatile and sustainable

**> 20%**  
Recycled materials

**Max. 10%**  
Crystalline silica content

**100%**  
Renewable electric energy

**99%**  
Recycled water

## HYBRIQ+

TECHNOLOGY®

Learn everything about Hybriq+® at <https://www.cosentino.com/silestone/>



Earthic is more than just a surface

New Collection

# EARTHIC®

BY SILESTONE XM X FORMAFANTASMA



Earthic is not just a product, it is a Cosentino research project on materials and sustainability in collaboration with the iconic studio Formafantasma.

Earthic is a sustainable surface with a maximum of 10% silica, created with an innovative composition and complex production process that is the product of years of R&D. It utilizes a selection of premium minerals, recycled glass, PET, bioresin, and Dekton fragments to reduce the extraction of raw materials, limiting soil erosion and CO<sub>2</sub> emissions. Additionally, it's manufactured with 99% recycled water and 100% certified renewable electric energy.

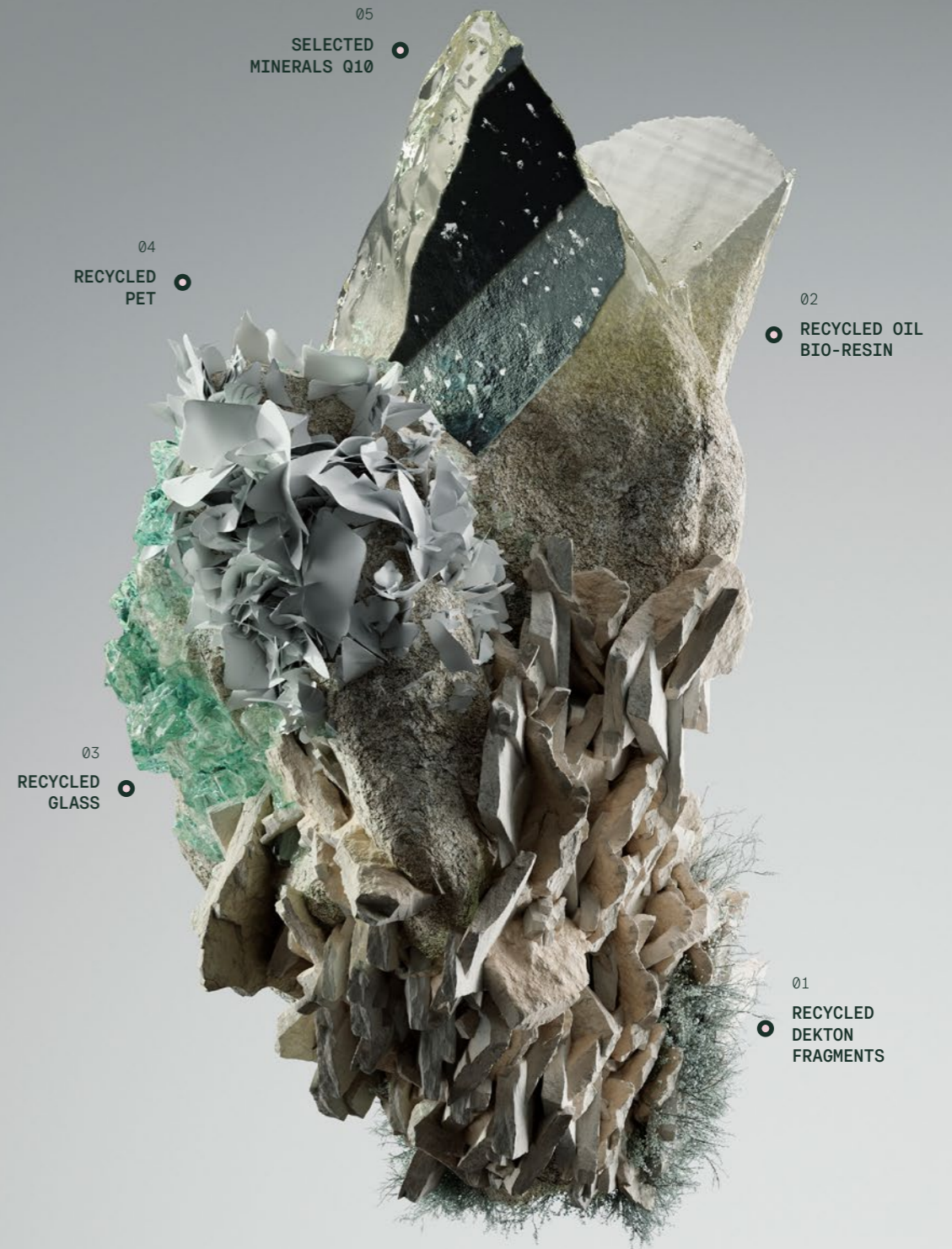
Earthic incorporates up to 30% recycled components into its eco-conscious surfaces.

## EARTHIC X FORMAFANTASMA

Formafantasma is a research-based design studio investigating the ecological, historical, political and social forces shaping the design discipline today.

Cosentino has partnered with design visionaries, Formafantasma, to craft a new collection that explores innovative and sustainable material sources.

Formafantasma brings forward a new approach to surface design.





# FFROM

DESIGNED BY  
FORMAFANTASMA .

A collection that reflects the material's origin and sourcing as well as the process of transforming recycled materials into something new.



## FFROM 01

A gray surface speckled with white recycled PET fragments creating a subtle yet intricate pattern that draws the eye and adds depth to its composition.

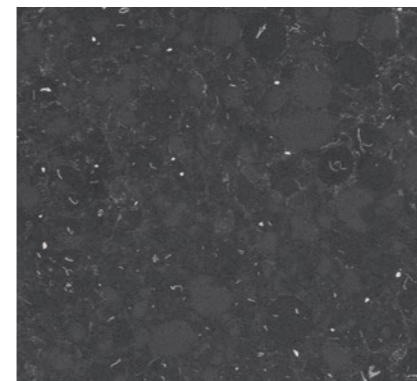






**FFROM 02**

A darker tone of gray elegantly punctuated with white accents, creating a visually attractive contrast. A shade of gray with a sense of modernity and minimalism.



**FFROM 03**

A mesmerizing yet elegant and antracite background with recycled PET scales scattered across the surface resembles the night sky or a geological specimen.







→ Kitchen island, countertop, cladding and table Silestone XM FFROM 03



# RAW

DESIGNED BY  
COSENTINO STUDIO.

Patterns and colors that capture the material essence in its most authentic state, combined with shapes that express a new aesthetic.

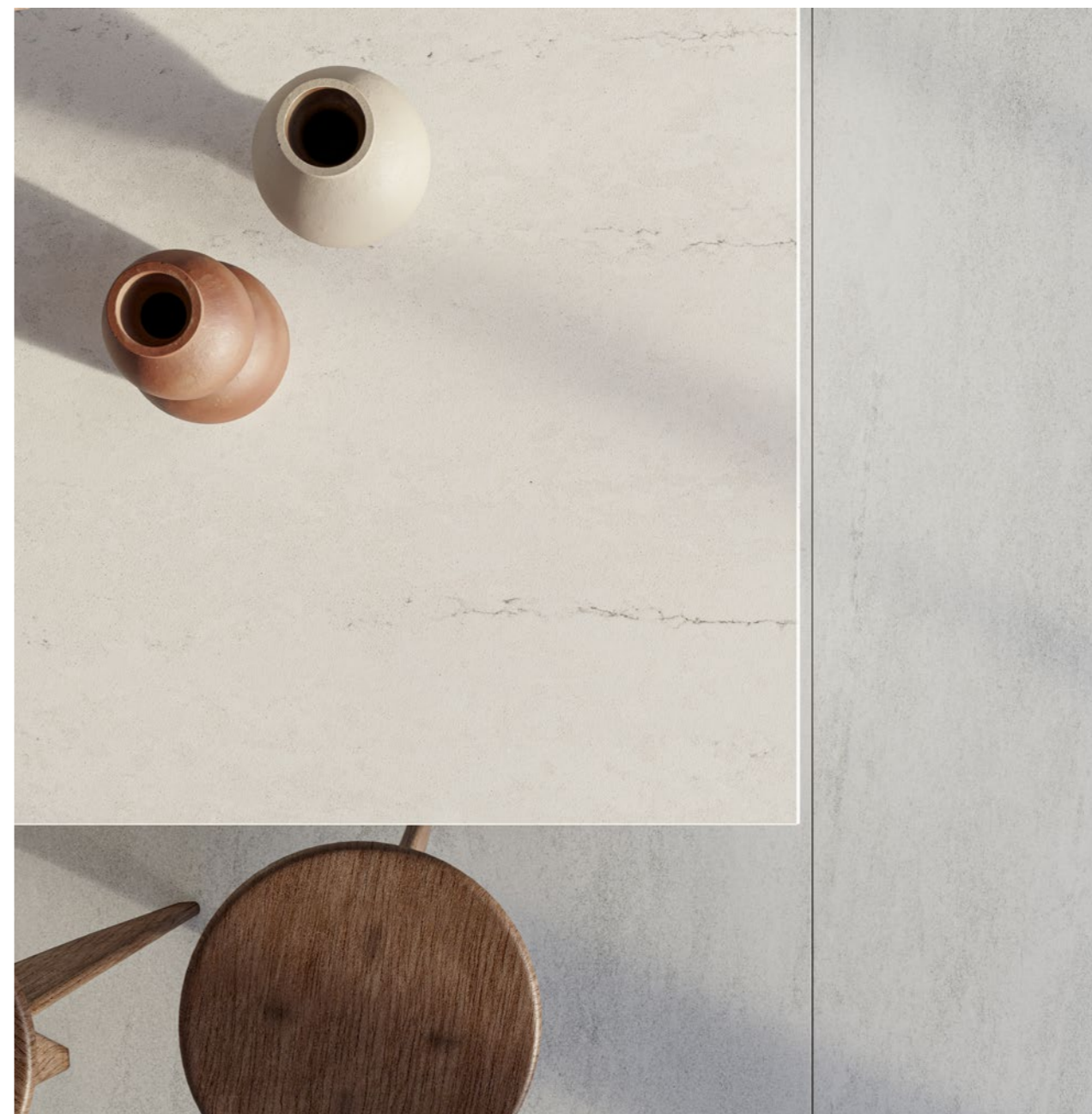


→ Silestone XM RAW G



## RAW A

A color endowed with a soft dark veined pattern over a white background that reveals an intricate design evoking a sense of natural elegance, reminiscent of refined stones found in nature.







→ Kitchen island, countertop and cladding Silestone XM RAW A





**RAW D**

A dark natural rock backdrop provides a mood of tranquility and solid elegance. Diffused streaks of bronze weaves through a charcoal landscape.



**RAW G**

A serene and natural concrete canvas with subtle copper touches intertwined with nebulous veins that add a sense of fluidity.



Veined Patterns. Reborn.

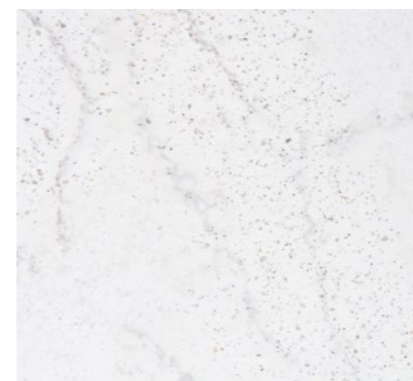
# Le Chic Collection



Le Chic is a unique collection that redefines a timeless classic. A step forward in veined-patterned surfacing. Emblematic natural stone-inspired aesthetics that bring to life the charm of iconic Parisian & Victorian spaces.

The Silestone Le Chic Collection revisits classic shades through a modern interpretation. New distinctive colours portray a sense of timeless allure with a hint of nostalgia.

Refinement and elegance are recaptured with expressive veins and metallic accents through craftsmanship and innovation. Cream and rich-coloured backgrounds create patterns full of depth.



## Eclectic Pearl

A silver desert infused with light

Flowing streams of delicate tones incrustated with grains like diamonds on jewelry. Eclectic Pearl hypnotizes with delicate veining, texture, and metallic accents across the whole surface.





### Versailles Ivory

Golden veins with majestic character

Versailles Ivory is the warmest tone of the collection. Very subtle two-toned marbling in the background, with gradient effects mesmerize with the flickering lights of its golden sparkle.



→ Kitchen island and Table top Silestone XM Eclectic Pearl





## Victorian Silver

### Evocative patterns of pearly rivers

Soft and subtle two-toned marbling in the background, with gradient effects and great depth. The cool background tone blends with its silver and dark gray veins to create an elegant colour that fits seamlessly with warm and cold tones.



## Parisien Bleu

### Reminiscent of the City of Light

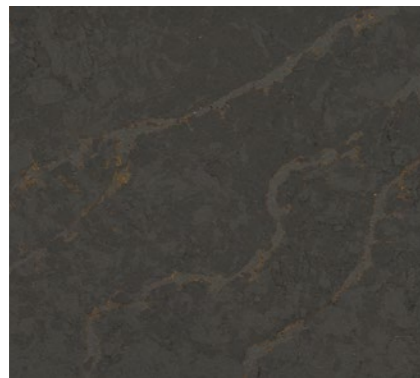
Parisien Blue boasts a deep bluish tone with strong personality and powerful character. Inspired by the shades seen in famous Imperial Roman stones, combined with fine veins in ochre tones.





→ Kitchen island, countertop and cladding Silestone XM Romantic Ash

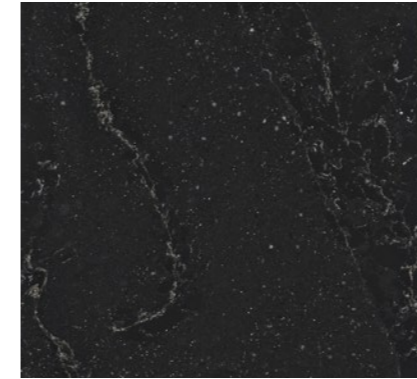




**Bohemian Flame**

A blazing touch of coppery glitter

Bohemian Flame presents subtle sinuous veins with metallic inlays in copper shades. It is inspired by the movement of the golden flows of lava that generate scars on volcanic soil. It is reminiscent of the calmly moving golden flame of candles accentuating tiny metallic pieces.



**Romantic Ash**

Deep crystal and silver particles in motion

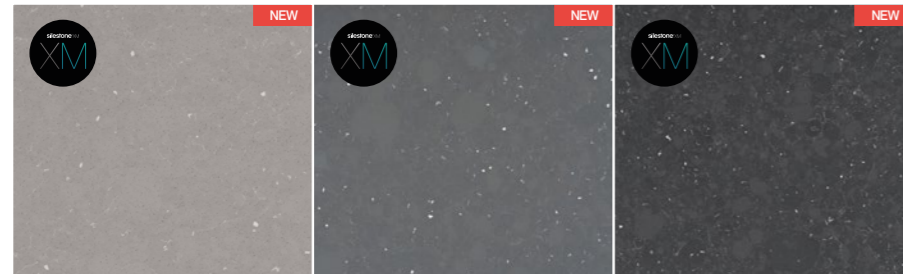
Large rivers and incrustations of grains in various sizes awaken memories of a milky way visible on a clear starry sky. The accent of blue strengthens the depth of Romantic Ash.



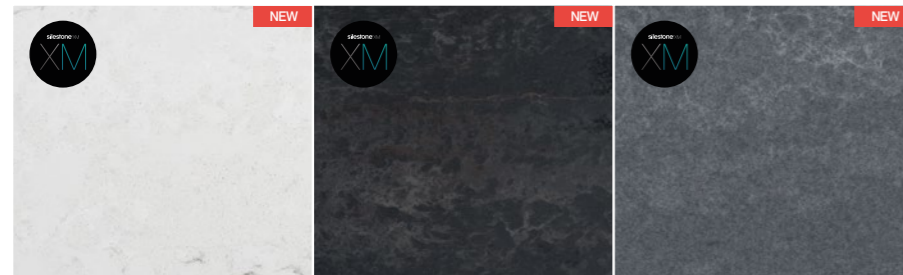


# Silestone XM New launches

## Earthic Collection



FFROM 01      FFROM 02      FFROM 03



RAW A      RAW D      RAW G



→ Sink and cladding Silestone XM FFROM 01

# Silestone & Silestone XM Collection



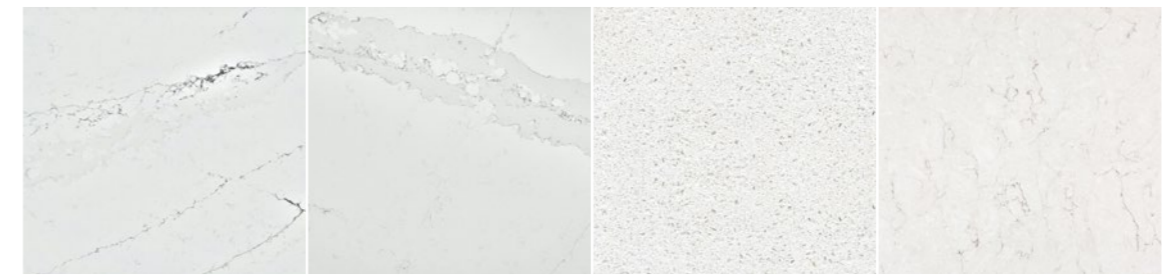
Iconic White      Bianco Zeus      Miami Vena      Nolita 23



Miami White 17      Bianco Calacatta      White Arabesque      Et. Calacatta Gold



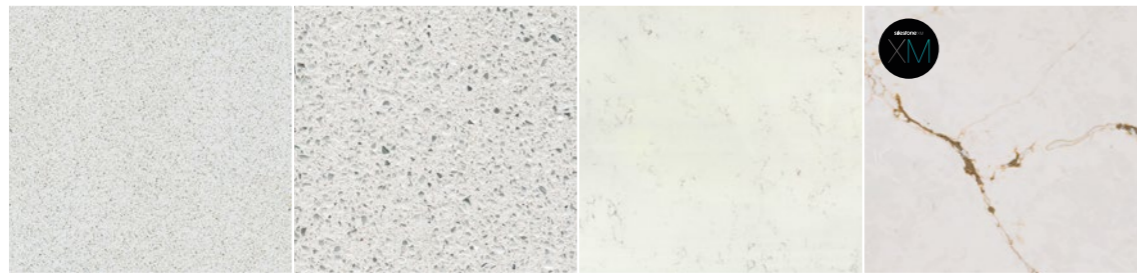
Eclectic Pearl      Et. Statuario      Ethereal Haze      Ethereal Glow



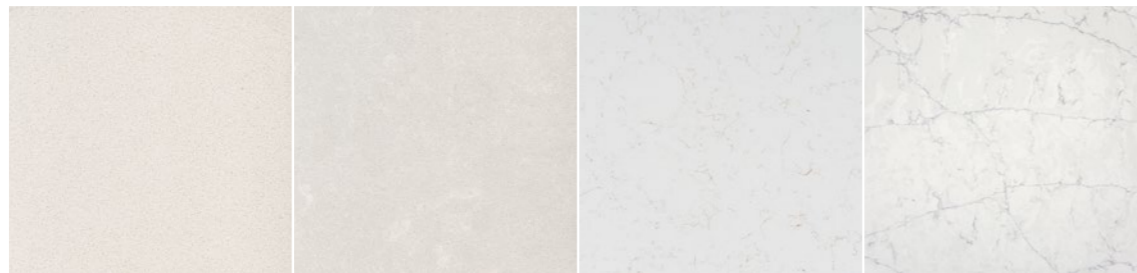
Ethereal Noctis      Ethereal Dusk      Blanco Maple 14      Snowy Ibiza



# Silestone & Silestone XM Collection



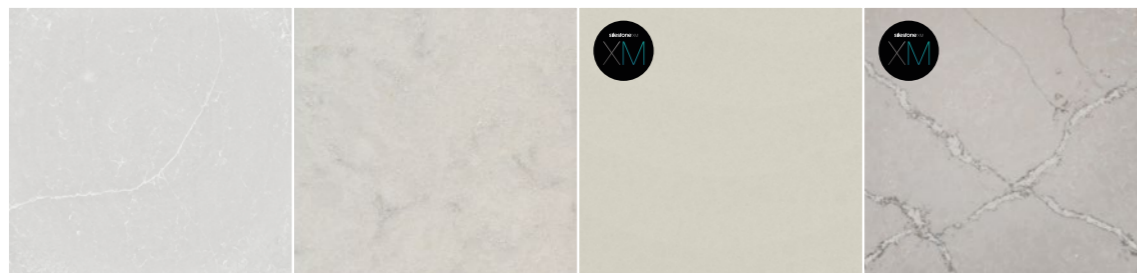
Blanco Norte 14    Stellar Blanco 13    Ariel    Versailles Ivory



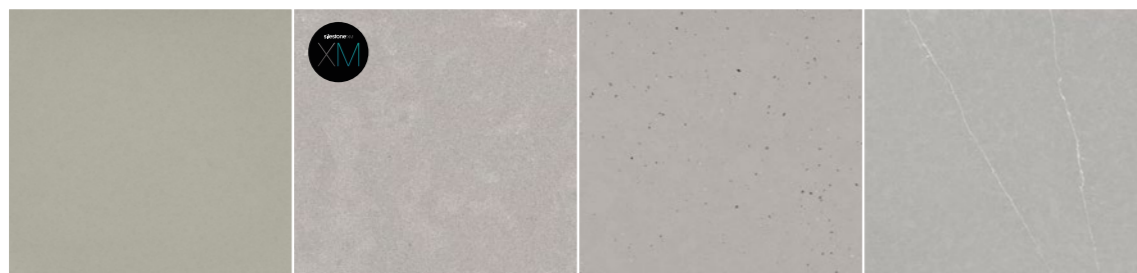
White Storm 14    Yukon    Halcyon    Pearl Jasmine



Lime Delight    Helix    Blanco Orion    Lusso



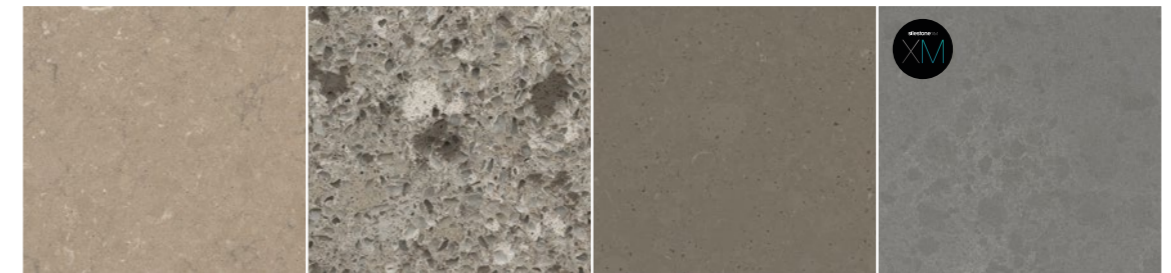
Desert Silver    Lagoon    Faro White    Victorian Silver



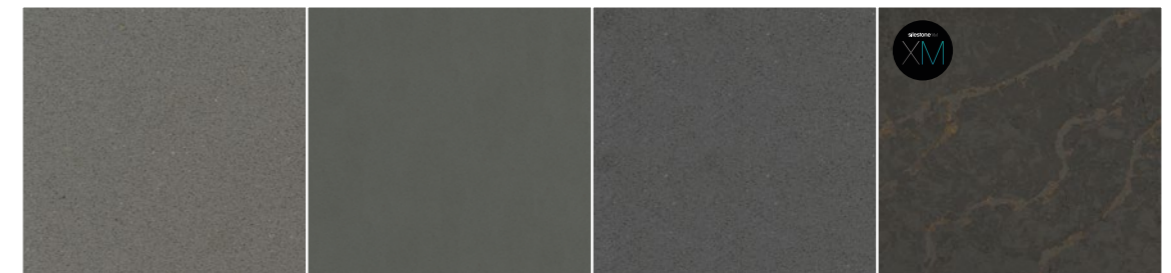
Cincel Grey    Poblenu    Concrete Pulse    Et. Serena



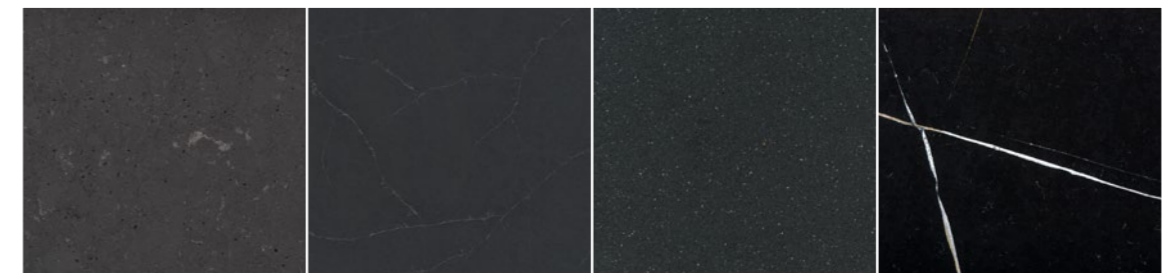
Posidonia Green    Parisien Bleu    Cala Blue    Arcilla Red



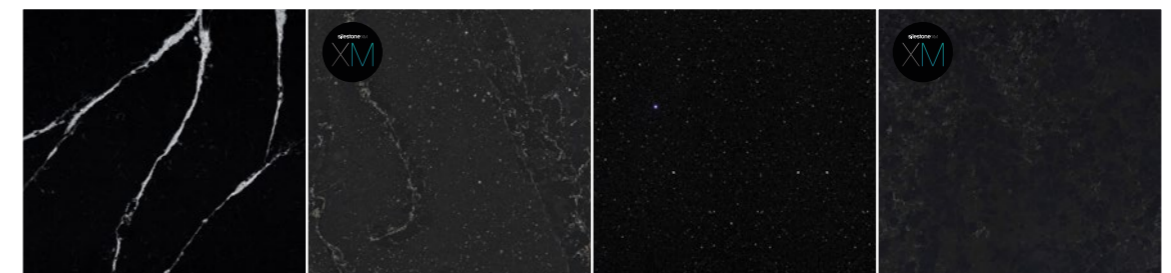
Coral Clay Colour    Alpina White 08    Brass Relish    Seaport



Gris Expo    Cemento Spa    Marengo    Bohemian Flame



Cinder Craze    Charcoal Soapstone    Negro Tebas 18    Et. Noir



Et. Marquina    Romantic Ash    Stellar Night    Corktown



# Silestone & Silestone XM Collection

GROUP 1		GROUP 2	
GRIS EXPO	☑ * ● ☼ Q40	BLANCO MAPLE 14	☑ ☑ * ● ☼ Q40
MARENGO	☑ * ● ☼ Q40	BLANCO NORTE 14	☑ ☑ * ● ☼ Q40
		CEMENTO SPA	☑ ☑ * ● ☼ Q40
		CORAL CLAY COLOUR	☑ * ● ☼ Q40
		MIAMI WHITE 17	☑ ☑ * ● ☼ Q40
		NIGHT TEBAS 18	☑ ☑ * ● ☼ Q40
		WHITE STORM 14	☑ ☑ * ● ☼ Q40

GROUP 3		GROUP 4	
ALPINA WHITE 08	☑ * ● Q40	ARCILLA RED	☑ ● ☼ Q10+ XM
ARIEL	☑ * ● ☼ Q40	BLANCO ORION	☑ * ● ☼ Q40
BIANCO CALACATTA	☑ * ● Q40	BLANCO ZEUS	☑ ☑ * ● ☼ Q40
BRASS RELISH	☑ ● Q40+	CALA BLUE	☑ ● ☼ Q10+
CINDER CRAZE	☑ ● ☼ Q40+	CINCEL CREY	☑ ● Q10+
CONCRETE PULSE	☑ ● ☼ Q40+	CORKTOWN	☑ ● Q10+ XM
DESERT SILVER	☑ ☑ * ● ☼ Q40	ET. SERENA	☑ * ● ☼ Q40
HALCYON	☑ * Q40	FARO WHITE	☑ ● ☼ Q10+ XM
HELIX	☑ * ● Q40	NOLITA 23	☑ ● Q10+ XM
LAGOON	☑ ☑ * ● ☼ Q40	POBLENOU	☑ ● Q10+ XM
LIME DELIGHT	☑ ● ☼ Q40+	POSIDONIA GREEN	☑ ● ☼ Q10+ XM
LUSSO	☑ * Q40	SEAPORT	☑ ● Q10+ XM
MIAMI VENA	☑ ☑ * ● Q40	WHITE ARABESQUE	☑ ☑ * ● Q40
SNOWY IBIZA	☑ ☑ * ● ☼ Q40	FFROM 01 <a href="#">NEW</a>	☑ ● Q10+ XM
STELLAR BLANCO 13	☑ ☑ * ● ☼ Q40+	FFROM 02 <a href="#">NEW</a>	☑ ● Q10+ XM
STELLAR NIGHT	☑ ☑ * ☼ Q40+	FFROM 03 <a href="#">NEW</a>	☑ ● Q10+ XM
YUKON	☑ * ● ☼ Q40	RAW A <a href="#">NEW</a>	☑ ● Q10+ XM
		RAW D <a href="#">NEW</a>	☑ ● Q10+ XM
		RAW G <a href="#">NEW</a>	☑ ● Q10+ XM

GROUP 5		GROUP 6	
CHARC. SOAPSTONE	☑ ☑ * ● ☼ Q40	ET. CALACATTA GOLD	☑ ☑ * ● ☼ Q40
ET. MARQUINA	☑ * ● ☼ Q40	ET. NOIR	☑ * ● ☼ Q40
ET. STATUARIO	☑ * ● ☼ Q40	ETHEREAL DUSK	☑ * ● Q40+
ICONIC WHITE	☑ * ● ☼ Q40+	ETHEREAL GLOW	☑ * ● ☼ Q40+
PEARL JASMINE	☑ * ● Q40	ETHEREAL HAZE	☑ * ● ☼ Q40+
		ETHEREAL NOCTIS	☑ * ● ☼ Q40+

GROUP 7	
BOHEMIAN FLAME	☑ ● Q10+ XM
ECLECTIC PEARL	☑ * ● ☼ Q40+ XM
PARISIEN BLEU	☑ * Q10+ XM
ROMANTIC ASH	☑ * ● ☼ Q40+ XM
VERSAILLES IVORY	☑ * ● ☼ Q40+ XM
VICTORIAN SILVER	☑ * Q40+ XM

Hybriq+®: Technology applied to the Silestone portfolio that implies a significant reduction in the content of crystalline silica.

**Q40** The figure next to the Q corresponds to the maximum percentage of content of crystalline silica (10%-40%).

**Q40+** The Q accompanied with the sign "+" indicates it has a minimum of 20% of recycled material in its formula.

- \* POLISHED TEXTURE
- SUEDE TEXTURE
- ☼ VOLCANO TEXTURE
- ☼ INTEGRITY SINK
- ☑ STANDARD SLAB
- ☑ JUMBO SLAB
- ☼ N-BOOST TECHNOLOGY



→ Bench Silestone XM FFROM 03 / Cladding Silestone XM FFROM 01



# Sensa

by Cosentino

## Protected Natural Stone

Sensa by Cosentino is premium maintenance-free natural stone brought to you by Cosentino, a world leader in the natural stone industry.

Sensa by Cosentino is treated with a revolutionary stain protection treatment called SenGuard, and comes with a 15-year warranty.

SENSA  
**15**  
YEARS  
WARRANTY

SENSA  
by COSENTINO®



→ Kitchen island, countertop and cladding: Sensa Platino

## Sensa by Cosentino Treatment

The long-lasting, chemically-integrating technology allows the material to breathe. This technology enhances its powerful properties.

The process alters the surface tension of the stone causing the material itself to prevent liquids such as water, coffee or oil from penetrating.



SENSA  
by COSENTINO®

TRADITIONAL



→ Countertop and sink: Sensa Vancouver  
Shower cladding: Sensa Siberia

## Applications

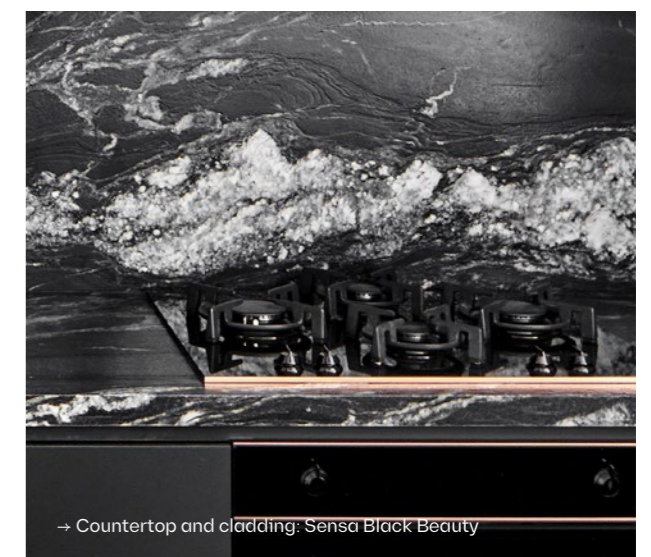
Sensa kitchen countertops.  
Natural, stain-resistant beauty.

Enjoy the design, hardness and resistance of natural stone without fear of stains. Sensa by Cosentino quartzites and granites feature a revolutionary stain-resistant treatment that protects them for the life cycle of your countertops.

## Textures

Unique patterns for irreplicable surfaces.

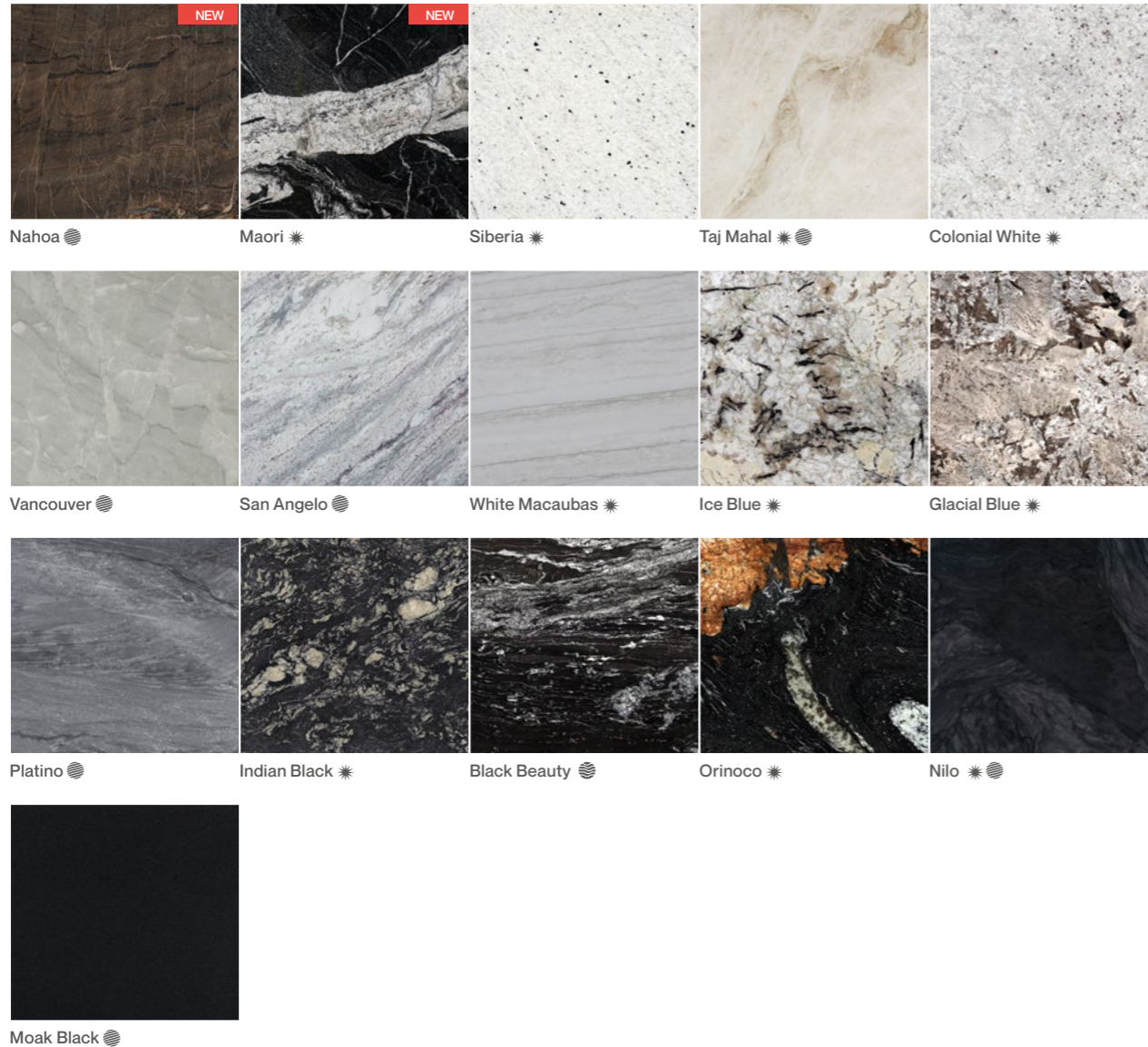
The colors and textures of Sensa by Cosentino have the patient and whimsical design of nature. Each of the seven available shades has a texture that produces different effects and sensations: suede, polished or caresse.



→ Countertop and cladding: Sensa Black Beauty



# Sensa by Cosentino Collection



→ Countertop and cladding Sensa Maori

\* MIRAGE   ● LEATHER   ● CARESSE

COLOR	FINISH 2 & 3 CM	COLORI	FINISH 2 & 3 CM
BLACK BEAUTY	CAS	PLATINO	SUE/LEA
COLONIAL WHITE	MIR	SANT ANGELO	SUE/LEA
GLACIAL BLUE	MIR	SIBERIA	MIR
ICE BLUE	MIR	TAJ MAHAL	MIR/SUE/LEA
INDIAN BLACK	MIR	VANCOUVER	SUE/LEA
MOACK BLACK	SUE/LEA	WHITE MACAUBAS	MIR
NILO	MIR/SUE/LEA	MAORI <a href="#">NEW</a>	MIR
ORINOCO	MIR	NAHOA <a href="#">NEW</a>	SUE/LEA

The samples provided do not guarantee that the supply will be absolutely identical in tone and grain. Consult the general conditions of sale

CAS CARESSE BRUSHED AND POLISHED  
 MIR MIRAGE POLISHED  
 SUE SUEDE  
 LEA LEATHER



# Scalea

by Cosentino

## From the Earth

We have selected the most premium natural stones from the best producer of all time: Earth.



### Advantages Scalea

Scalea is Cosentino's collection made up of natural stones, chosen through an exhaustive selection process. This collection of natural stones is inspired by the origins of the Cosentino Group, as a brand that has worked with noble materials such as marble, granite, limestones and travertines. Its extraordinary resistance and durability, together with whimsical and unrepeatable designs, make Natural Stone a safe bet for the professional.

- More than 100 materials in the portfolio.
- Technical sheets and Declaration of Performance upon request.
- Stocks locally in our own Centers.



→ Scalea Blanco Macael. "Patio de Los Leones". Alhambra of Granada.





→ 108

## 5.1 LIVINGS

Redesign the living room and turn it into an open, functional, comfortable space integrated with the rest of the house.

→ 130

## 5.3 OUTDOOR

Revolutionize the outdoor space so that the porch, terrace or garden become a continuation of the house.

Innovative surfaces that bring the designer's vision to life throughout the home, in both indoor and outdoor spaces

→ 144

## 5.5 FURNITURE

Rediscover the exclusivity of custom-designed furniture for every space.



→ 114

## 5.2 BATHROOMS

Reinvent the bathroom space to create a world of sensations through a unique and integrated design concept.

→ 134

## 5.4 KITCHENS

Redefine the function of the kitchen in the home and transform it into the heart of the house.



## Living rooms

The living room is transformed into a personal and timeless space with Cosentino surfaces; an expression of sophistication and functionality.



Live your space



## Rediscover your home's living space

An integrated solution with maximum versatility and functionality.

Endless personalization possibilities.

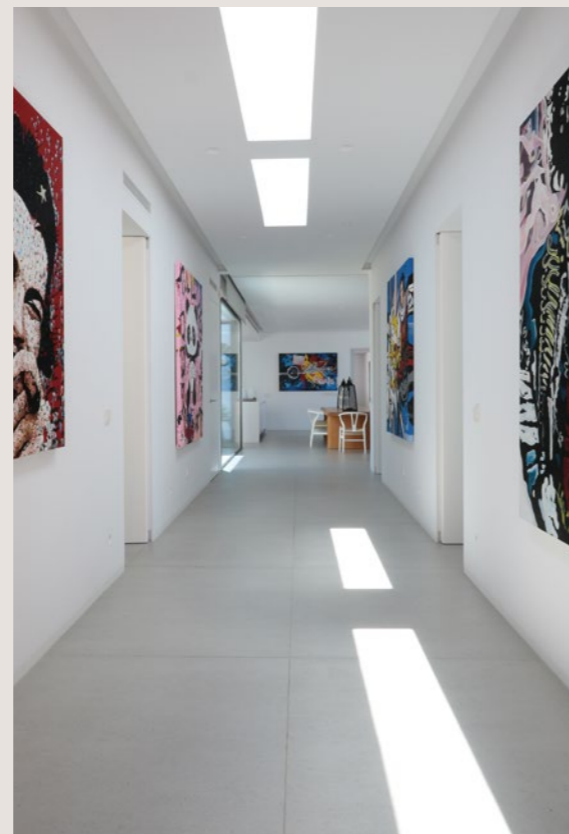


## Limitless customization

Designing a living room with high aesthetic value requires versatile surfaces in a variety of colors, textures, and unique chromatic pantones, such as Dekton and Silestone, which will cover floors, furnitures, cladding, and more, to create an integrated and differential interior design experience.

## Perfect for high-traffic areas

Dekton is an innovative surface with a high level of resistance, capable of withstanding high temperatures, ultraviolet rays and any scratches. It remains unalterable to wear and abrasion, as a result of the high daily traffic in spaces such as living rooms.



## Easy installation

Dekton is offered in a Slim format which is light, easy to cut, and adaptable to every space. Its thin thickness of 4mm allows adjustments to be made during installation, using tools for ceramic tiles.



## Comprehensive solutions

The same material for flooring, cladding and furniture creates visual continuity and high aesthetic impact, unifying spaces and increasing their functionality.

## New Dekton Optimma Format

Dekton has been optimized for interior cladding. The Optimma format (260 cm x 100 cm x 4 mm) allows for cost efficiencies, more design possibilities and easy installation and manipulation. The results: impactful cladding and integrated spaces.

## Large format, minimal joints

Dekton Slim's large format up to 320 x 144 cm and thickness of 4 mm allows you to cover large surfaces creating a continuous and homogeneous aesthetic for cladding and furniture. This size reduces the number of joints, easing cleaning and maintenance.





→ Cladding Dekton Ukiyo Nacre GV3

→ Cladding Dekton Ukiyo Rem GV3 and Dekton Nacre



→ Flooring Dekton GK07 Ceppo / Table and cladding Dekton VK01 Nebbia



# Cosentino Bathrooms

Cosentino helps you to rediscover your bathroom space through a unique and integrated design concept.



Bathroom Spaces



Reimagine the most personal space in the home. Create a unique experience in which the most beautiful and functional Cosentino surfaces create unique, warm, and exclusive spaces.

From wall and floor claddings in different yet perfectly balanced formats, colors and textures, to attractive vanities and shower trays, carefully designed with great attention to detail and simplicity.

Solutions of great aesthetic and functional value to suit every requirement and style of bathroom, which redefine the way in which we experience such a personal space and feeling of well-being.

## Large format

Large format, minimal joints. Tailor-made floors and wall cladding.

Bathrooms are exposed to constant activity. Using a high-quality surface for floors and cladding reduces joints and guarantees hygiene and cleanliness. The strategically placed slabs in XXL make the room look bigger, creating the sensation of a larger bathroom.

## Shower Trays

Shower trays with Dekton Grip/Grip+ and Silestone: exclusive and integrated designs in the bathroom with limitless customization possibilities.

Cosentino offers an extensive collection of shower trays in the material the architect or designer chooses and adaptable to any space. It is an interesting alternative to the traditional shower that simplifies installation and assembly.

## Sinks

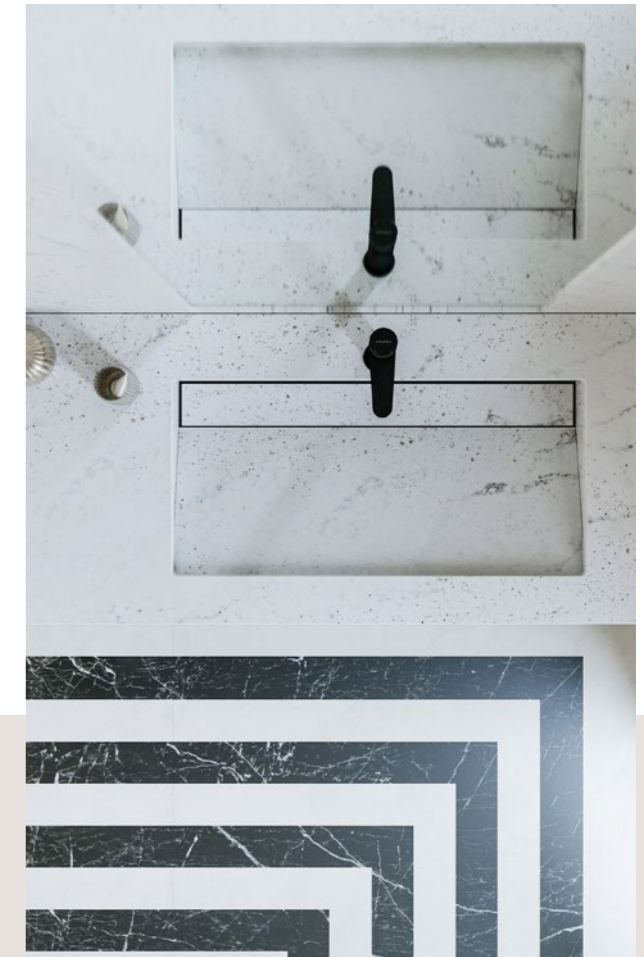
Sinks and vanity tops with great versatility that adapt to any space. Sophisticated designs with maximum beauty and durability.

Silestone sinks are built with a unique and innovative design able to live up to the most demanding creative proposals. From sinks that integrate into the vanity top, to overmount options, double bowls...everything is possible with tailor-made fabrication.

## Optimma Format

Dekton Optimma Format. Optimized for interior bathroom cladding: taking full advantage of the space, easy installation, and design continuity in a vertical format.

The Optimma slab format is available in 260 x 100 cm and 0.4 cm thicknesses, and is able to meet any vertical cladding need to create a continuous design, taking advantage of the full height with easy installation and minimum waste.



## Total Integration

Total aesthetic integration and visual continuity. The same material for your entire bathroom: floor, cladding, shower tray, and sink.

A single surface applied to every component of the bathroom allows for complete esthetic homogeneity, creating harmony, balance, and amplitude.

## Colors and textures

New collections of innovative, on-trend colors and textures, to create bathroom spaces full of originality and impact.

Innovative Silestone and Dekton surfaces possess a wide variety of solid and veined colors, unique chromatic pantones, and sensory textures to rediscover bathroom spaces.





→ Countertop, sinks and cladding Silestone XM FFROM 01



→ Countertop, sinks and cladding Silestone XM RAW G





→ Flooring, washbasin and bath top Dekton Nacre / Cladding Dekton Ukiyo Umber GV2



# Sinks

Full array of products

Sinks and worktops designed to adapt to any space.



**Armony**  
 The evolution of tradition makes this sink a key piece, bringing harmony and definition.



Available in a wide variety of colors.

Check available colors at [cosentino.com](https://www.cosentino.com)



\* Only in Jumbo format



## Elegance

Silestone

Basin 49 x 30 x 10 cm  
 Length from 59 to 320\* cm  
 Width from 40 to 60 cm  
 Straight edge of 2 cm or Skirt 12,5 cm



## Reflection

Silestone / Dekton

Basin S 49 x 30 x 8 cm  
 Basin M 90 x 30 x 8 cm  
 Basin L 120 x 30 x 8 cm  
 Length from 59 to 320\* cm  
 Width from 40 to 60 cm  
 Straight edge of SI 2 or DK 1,2 cm or Skirt 12,5 and 16 cm



## Armony

Silestone

Basin 49 x 30 x 10 cm  
 Length from 59 to 320\* cm  
 Width from 40 to 60 cm  
 Straight edge of 2 cm or Skirt 16 cm



## Silence

Silestone / Dekton

Basin S 49 x 30 x 8 cm  
 Basin M 90 x 30 x 8 cm  
 Basin L 120 x 30 x 8 cm  
 Length from 59 to 320\* cm  
 Width from 40 to 60 cm  
 Straight edge of SI 2 or DK 1,2 cm or Skirt 12,5 and 16 cm



## Symmetry

Silestone

Basin S 33 x 23 x 7 cm  
 Basin M 38 x 25 x 7 cm  
 Basin L 58 x 30 x 7 cm  
 Length from 55 to 320\* cm  
 Width from 43 to 60 cm  
 Straight edge of 2 cm or Skirt 10 cm



## Simplicity

Silestone / Dekton

Basin 49 x 30 x 10 cm  
 Length from 59 to 320\* cm  
 Width from 40 to 60 cm  
 Straight edge of SI 2 or DK 1,2 cm or Skirt 12,5 and 16 cm



## Integrity Sinks

Full array of products

Sinuous, organic and linear shapes, made on hygienic easy-to-clean surfaces.



**Marie**  
Three sizes in a design of round and functional encounters that combines technology, integration, and practicality.



Available in a wide variety of colors.

Check available colors at [cosentino.com](https://www.cosentino.com)



**Marie**  
Silestone

Basin Marie Top: 51 x 37 x 10 cm  
 Basin Marie S: 34 x 37 x 7 cm  
 Basin Marie L: 51 x 37 x 7 cm

Length from 47 to 320\* cm  
 Width from 44 to 60 cm  
 Straight edge of 2 cm or Skirt 10 cm  
 (Marie Top) or 12,5 cm (Marie S and L)



**Evita**  
Silestone

Basin Evita S: 50 x 30 x 10 cm  
 Basin Evita L: 65 x 30 x 10 cm  
 Basin Evita Q: 51 x 41 x 10 cm

Length from 60 to 320\* cm  
 Width from 40 to 60 cm  
 Straight edge of 1,2 cm or Skirt 12,5 cm

## H-Line Sinks

Different worktop and bathroom shelf solutions, with a modern and design adaptable to any need, adding sophistication to the bathroom space.



**Urban porcelain overmount**

Silestone  
Dekton

Length from 45 to 320\* cm  
 Width from 46 to 60 cm  
 Straight edge of 1,2 cm or Skirt 10 cm



**Flex porcelain undermount**

Silestone  
Dekton

Length from 60 to 320\* cm  
 Width from 46 to 60 cm  
 Straight edge of 1,2 cm or Skirt 10 cm

\* Only in Jumbo format



# Shower Trays

Full array  
of products

Five adaptable shower tray models in a variety of materials and finishes of Dekton and Silestone, suitable for any space in the home and technical requirements, no matter how complex.



**Katräl**  
The new framed shower tray in Dekton, with a versatile and smart design, where the drain is covered in the same material to aim the perfect visual continuity in your bathroom space.



Available in a wide variety of colors.

Check available colors at [cosentino.com](https://www.cosentino.com)



**Katräl**

Dekton Grip/Grip+  
Length from 70 to 200 cm  
Width from 70 to 120 cm



**Exilis**

Silestone  
Length from 70 to 320\* cm  
Width from 70 to 150\* cm



**Kador Suite**

Silestone  
Length from 70 to 200 cm  
Width from 70 to 150\* cm



**Wakka**

Silestone  
Length from 70 to 250 cm  
Width from 70 to 150\* cm



**Wakka Brim**

Silestone  
Length from 70 to 250 cm  
Width from 70 to 150\* cm

\* Only in Jumbo format



## HLine Bath Tops

Horizontal and functional planes with straight lines created by Silestone and Dekton to create a variety of sophisticated sinks in the same material.



Available in a wide variety of colors.

Check available colors at [cosentino.com](https://www.cosentino.com)



### Straight edge worktop

Silestone / Dekton  
Length from 60 to 320 cm  
Width from 30 to 60 cm  
Straight edge of 1,2 cm

### Worktop with skirt

Silestone / Dekton  
Length from 60 to 320 cm  
Width from 30 to 60 cm  
Skirt 6, 10 or 21 cm

## Flooring

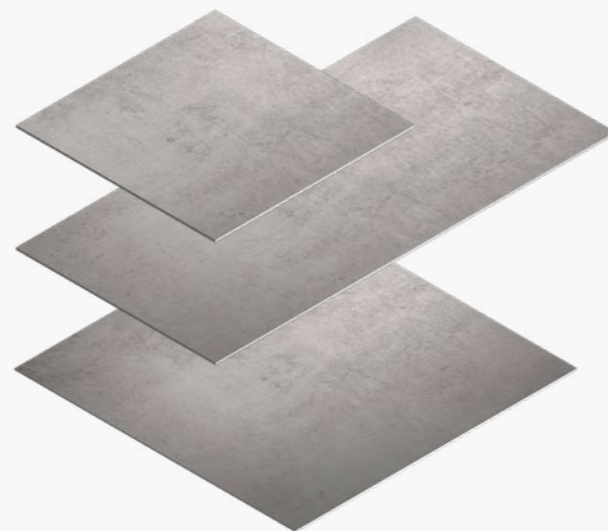
### Tailor-Made and standard formats

Achieve aesthetic continuity in the bathroom floor with standard format solutions or personalized ones of great resistance when faced with fluctuations in humidity and temperatures. Minimal jointing and maintenance-free.



Available in a wide variety of colors.

Check available colors at [cosentino.com](https://www.cosentino.com)



### S Format

Dekton  
71 x 71 cm

### M Format

Dekton  
142 x 71 cm

### L Format

Dekton  
142 x 142 cm

\* Only in Jumbo format



# Cosentino Exterior Spaces

Beautifully continuous  
and durable  
outdoor spaces.

Redesign your  
outdoor spaces to  
include porches and  
terraces that blend  
in with your home.



Exterior Spaces





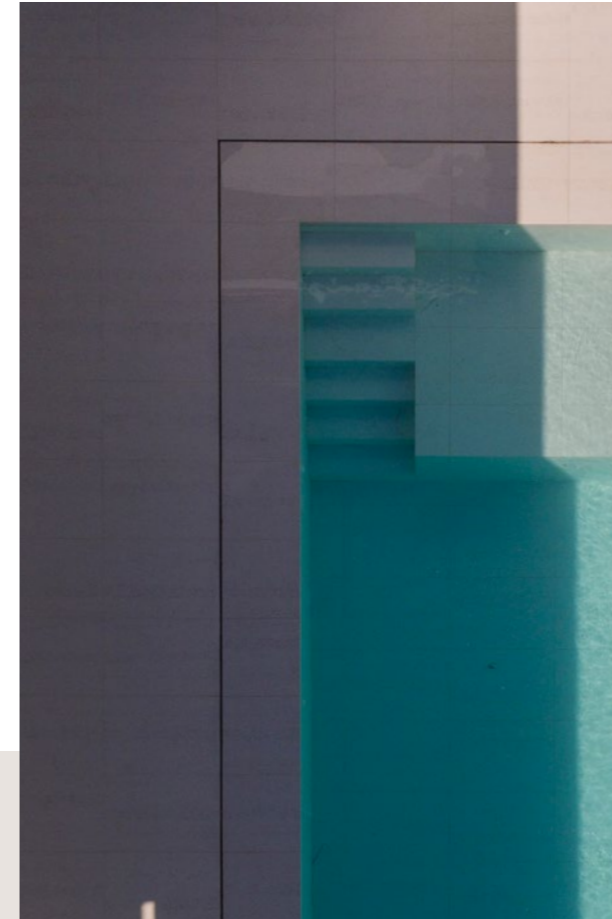
## Customization without limits

Open spaces with freedom for inspiring, designing with a unique purpose: personalizing your outdoor spaces.



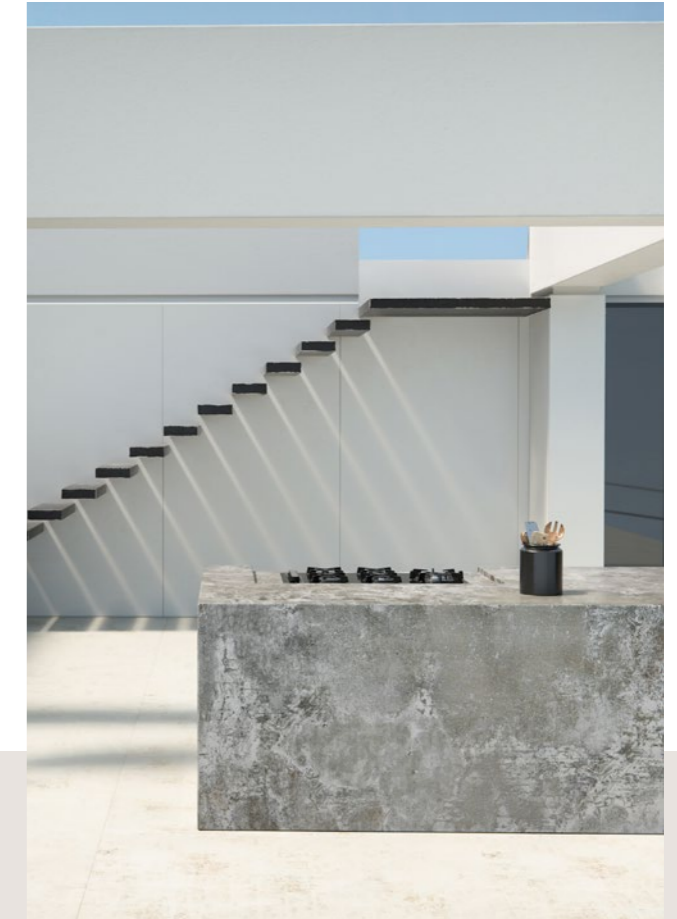
## Easy installation

Dekton is very lightweight, easy-to-cut and adaptable format.



## High transit resistance

It remains unalterable faced with daily erosion and abrasion in outdoors spaces, used in terraces, stairs and pool surroundings.



## Dekton Outdoor Countertops

Dekton outdoor countertops are resistant and durable. Innovative surfaces turn into functional and beautiful countertops.



# Cosentino Kitchens

Reinventing the  
kitchen to make it  
the heart of the home.



Kitchen Spaces



It's been a long time since the kitchen was a forgotten room in the darkest part of the house. The kitchen is now a key space that can integrate with the living-dining room and share the same design.



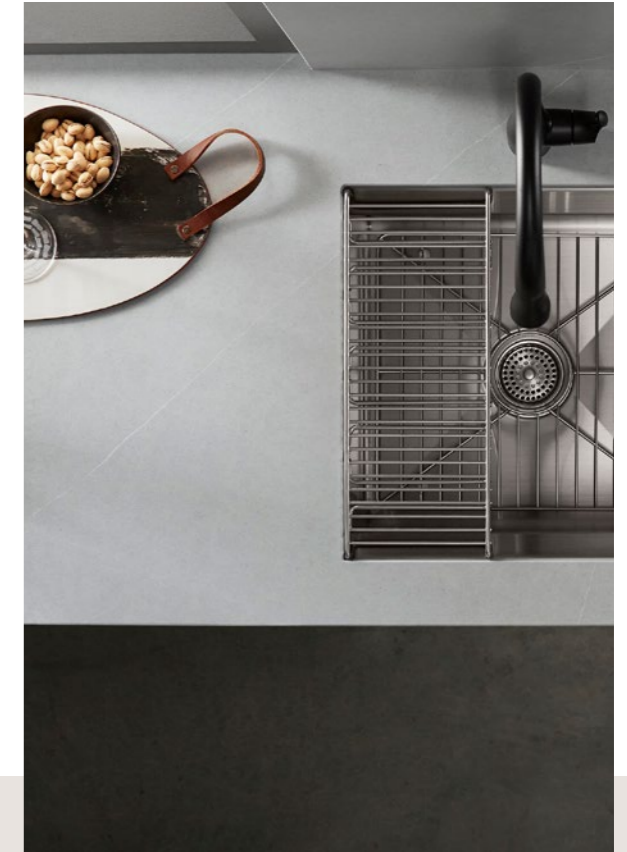
### Integration within the space

The kitchen as a living space which connects to the rest of the house. Total integration of the worktop with the living room cladding or floor.



### Kitchen countertop and island

Thousands of households all over the world have trusted Cosentino to provide them with a kitchen that is not only functional and beautiful, but also plays a key role in the daily lives of their families. We offer a wide range of colors and textures, so you're sure to find your perfect countertop.



### Kitchen flooring and cladding

In this so-called "reconversion" process, the island plays a major role, as it serves as a connecting element between the two environments as well as a meeting place in the home. In this project, the interior designer built the entire design around the island.





→ Kitchen island and cladding Silestone Lime Delight



→ Countertop and cladding Silestone XM RAW D





→ Cladding Dekton Kreta, Dekton Ukiyo Bromo GV2 and Dekton Ukiyo Kreta GV2  
→ Kitchen island Dekton Ukiyo Bromo GV2 / Countertop Dekton Bromo



# Silestone Integrity Sinks

Full range of products.

Without joints, cracks, or limits. Integrity wants to unite your kitchen with surfaces without an ending or beginning. Integrity brings a sense of unity and perfect integration with the rest of the elements on your countertop. A single piece available in a range of Silestone colors, so your kitchen is endless.



Silestone Integrity offers all the features that that have made Silestone a market leader: high scratch resistance, durability and of course the highest performance in terms of design.



Available in a wide variety of colors.

Check available colors at [cosentino.com](https://www.cosentino.com)



**Integrity Due S**  
Silestone

Outer measure 40 x 37 x 17.5 cm  
Inner measure 37 x 34 x 15.5 cm  
Radius between walls 6.5 cm  
Radius between bottom and sides 0.3 cm



**Integrity One**  
Silestone

Outer measure 54 x 44 x 17.5 cm  
Inner measure 51 x 41 x 15.5 cm  
Radius between walls 13 cm  
Radius between bottom and sides 0.3 cm



**Integrity Due L**  
Silestone

Outer measure 54 x 40 x 17.5 cm  
Inner measure 51 x 37 x 15.5 cm  
Radius between walls 6.5 cm  
Radius between bottom and sides 0.3 cm



**Integrity Q**  
Silestone

Outer measure 55 x 44 x 17.5 cm  
Inner measure 51 x 41 x 15.5 cm  
Radius between walls 3 cm  
Radius between bottom and sides 3 cm



**Integrity Due XL**  
Silestone

Outer measure 70 x 46.5 x 23.5 cm  
Inner measure 67 x 43.5 x 21 cm  
Radius between walls 6.5 cm  
Radius between bottom and sides 0.3 cm



**Integrity Top**  
Silestone

Outer measure 54 x 40 x 17.5 cm  
Inner measure 51 x 37 x 15.5 cm  
Radius between walls 6.5 cm  
Radius between bottom and sides 0.3 cm



# Furniture

Surfaces integrated with  
unique and timeless  
furniture design.

## **Dekton, The skin of the furniture**

It's on-trend to use the same cladding on the kitchen or bathroom countertop to clad drawers and wardrobes. This allows you to achieve continuous and clean surfaces where joints disappear, creating a monolithic effect.

This decor trend is only possible with the technological evolution of materials. 8 mm and 12 mm thicknesses are ideal for tables and coffee tables. Dekton Slim 4mm thickness allows kitchen and bathroom furniture cladding, and also answers the creative restlessness of the designer: table tops for the interior and exterior completely personalized and exclusive.





## Furniture

Unprecedented durability and design.

Cosentino surfaces redefine furniture thanks to their versatility, durability, and beauty.



→ Kitchen furniture cladding Dekton Slim Protek Opera



Dekton Slim Protek, 4 mm thickness makes it an incredibly easy material to work with. Its light weight and properties make it the ideal solution to clad all types of furniture and adapt to any aesthetic proposal: in white and gold, in black and chrome...

Dekton Slim Protek has all the advantages and properties of Dekton, including high resistance to scratches and stains.

**Ideal for cladding closet doors and kitchens**

Dekton Slim Protek Zenith and Dekton Slim Protek Opera were the two tones chosen to hide these drawers under the stairs and on kitchen cabinetry. The result is a camouflaged surface of this practical storage solution, without compromising the aesthetic of the space.



→ Kitchen furniture cladding Dekton Slim Kreta



### Cabinets integrated into the island

Dekton Slim Protek is the perfect solution to clad drawers in the kitchen island, achieving a monolithic effect.

For this industrial project, the designer chose Dekton Trilium: a finish inspired by volcanic rock with a touch of oxidation, which adds great character to the space.

Once again, Slim's 4 mm thickness allows the creation of an island totally integrated with drawers.



→ Kitchen furniture cladding Dekton Slim Trilium





→ Table top Dekton Laurent



→ Table top Dekton Helena



→ Table top Dekton Helena



→ Table top Silestone XM Versailles Ivory



### Ideal for work spaces

The properties of Dekton and Silestone make these materials the perfect choice for work spaces. With their endless possibilities in terms of finishes and designs, they add a deco touch to these spaces and create attractive and functional tables suitable to work from home.







## COSENTINO®

### COSENTINO HEADQUARTERS

Ctra. Baza a Huércal-Overa, km 59, 04850

Cantoria - Almería (Spain), Tel.: +34 950 444 175

info@cosentino.com / www.cosentino.com



\* Obtain information about colors with NSF certification at [www.nsf.org](http://www.nsf.org)

\*\* The Carbon Neutral certification only applies to the Sunlit Days, Onirika, Pietra Kode, Urban Crush and Le Chic series.

\*\*\* Consult references in certificate 301300.