

# C·Bath

A new bathroom experience  
by Cosentino®

## The Bathelier

The Bathelier is Cosentino®'s concept that embodies the vision of a unique, experience-oriented space through renowned designers who interpret the bathroom of the future: unusual, unique and seamless.

REMY MEIJERS, CLAUDIA AFSHAR, DANIEL GERMANI,  
COLIN SEAH AND MUT DESIGN

COSENTINO®

Get inspired at [cosentino.com](https://www.cosentino.com)



# C·Bath

A new bathroom experience  
by Cosentino®

The Bathelier by Remy Meijers, Claudia Afshar,  
Daniel Germani, Colin Seah and MUT Design.

©2023 Cosentino®

Cosentino S. A.  
Ctra. A334 Baza-Huércal Overa, km. 59  
04850 Cantoria, Almería, Spain  
(+34) 950 444 175 (switchboard)  
(+34) 950 543 039 (customer service)

[www.cosentino.com](http://www.cosentino.com)

## The Bathelier

The Bathelier is Cosentino®'s concept that embodies the vision of a unique, experience-oriented space through renowned designers who interpret the bathroom of the future: unusual, unique and seamless.

REMY MEIJERS, CLAUDIA AFSHAR, DANIEL GERMANI,  
COLIN SEAH AND MUT DESIGN

COSENTINO

C·Bath

A NEW BATHROOM EXPERIENCE BY COSENTINO®

# C-Bath is Cosentino®'s comprehensive approach to reimagining the bathroom space through design and technology.

A complete vision of the space from a new perspective. Innovation in the design of unique and personalised atmospheres, featuring large format wall and floor cladding and minimum number of joints, colours and textures in perfect balance, minimalist washbasins and shower trays designed in detail. Manufactured with state-of-the-art materials such as Silestone®, Dekton® and Sensa, C-Bath gives a fresh look to your bathroom.

C-Bath is the experience of designing a bathroom to suit you, a personal space in which to find serenity and well-being: a bathroom to be lived in.

Bathrooms where creativity is at its best with The Bathelier: exclusive collections created by designers from all over the world for C-Bath.

A creative look at the bathroom space where art and functionality converge.




# Content

Cosentino® P. 10



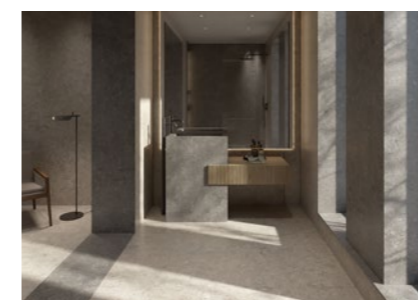
To inspire people through innovative and sustainable spaces

**The Bathelier** P. 16



Remy Meijers	20
Claudia Afshar	34
Daniel Germani	48
Colin Seah	62
MUT Design	76

C-Bath P. 90



C-Bath Studio P. 92



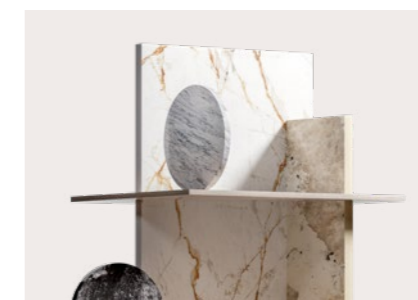
Projects P. 124



Overall bathroom concept P. 152



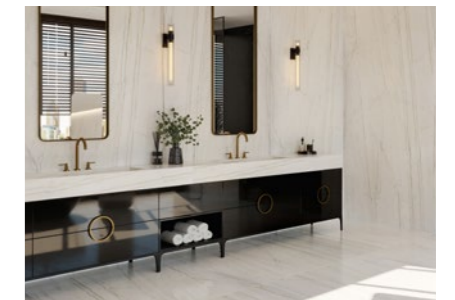
Materials P. 156



Colour Range P. 172



Flooring & Cladding P. 182



Washbasins & Shower trays P. 190



Accessories P. 236



We seek a **more valuable, meaningful** and more comprehensive benefit.

Enriched and balanced **with the positive impact of everything we do.** **Good for people's lives, the development of their communities and the planet we live on.**

A growth that harmonises **the benefits of today with those of the future.** **A growth that is responsible for the consequences of our activity.**

**A benefit to keep growing, but in an ever better world.**

Photovoltaic plant at Cosentino Industrial Park

Cosentino®



To inspire people  
through innovative and  
sustainable spaces

### **Cosentino® Sustainability**

At Cosentino® we approach sustainability as a collective commitment that stems from the individual involvement of those that are part of Cosentino®.

Our continuous improvement efforts involve a constant analysis of our entire value chain – from the procurement of raw materials to the delivery of end products to customer.

At Cosentino® we are strongly committed to the 2030 Agenda promoted by the United Nations. The company, in view of its position as a global leader in the production and distribution of innovative surfaces for decoration and architecture from its Almería base, is committed to driving the local and global sustainability efforts.

## Water

Since our inception, we have appreciated the importance and understood the challenges of proper water management.

This has motivated us to implement a sustainable use policy maximising the efficient use of water resources in the different production processes.

We use cutting-edge technology to achieve 99% recycled water in all our production processes in Cosentino®'s industrial park.

Additionally, we use 100% of surplus water to irrigate green areas.

## Materials

We are aware of the importance of making the most of the materials we work with, both from the beginning of their life cycle to the end of the value chain.

With this goal in mind, in recent years we have embarked on an ambitious R&D project called 'Circularity' to reuse the materials from which we manufacture our products.

Another action is the disruptive HybriQ+ technology that brings about the new generation of Silestone®. HybriQ+ contains a minimum of 20% recycled materials and is manufactured using only renewable energy and 99% recycled water.

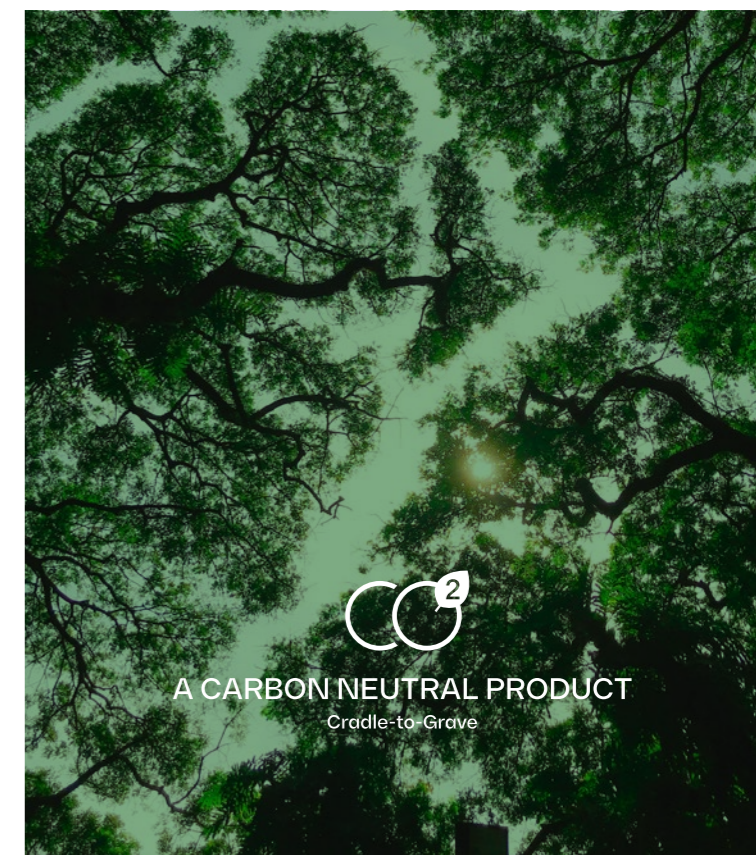
## Cosentino® CO<sub>2</sub> Neutral

We offset our CO<sub>2</sub> emissions for the entire life cycle of the product.

The ultra-compact Dekton® stone is classified as Carbon Neutral.

We have identified those projects that meet the requirements for responsible offsetting and that, in turn, have a strong social dimension that contribute to the achievement of the Sustainable Development Goals of the UN's 2030 Agenda.

The project chosen in 2019 for the offsetting of CO<sub>2</sub> emissions has an important direct impact on sustainable development by supporting the local economy, providing training and job opportunities.



Waste treatment and recovery plant (CoMA)



99% recycled water in all our production processes



Care for the Planet. Restoration of natural spaces in Cantoria, Almería.





# The Bathelier



# The Bathelier

by Cosentino®

## A unique vision of creative bathrooms.

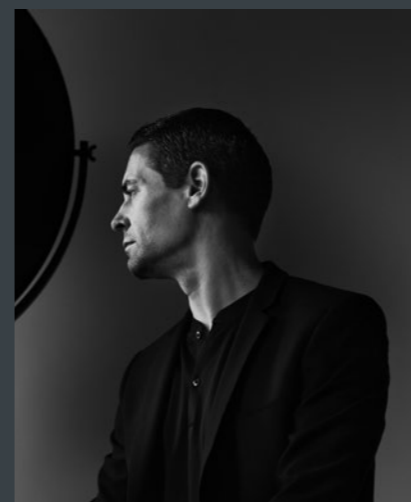
The Bathelier is Cosentino®'s concept that embodies the vision of a unique, experience-oriented space through renowned designers who interpret the bathroom of the future: unusual, unique and seamless. Iconic spaces with a focus on materials that elevate and redefine the bathroom.

An exclusive portfolio of bathroom solutions, with unique shapes, evocative textures and geometries that combine seamlessly, uniformly and sculpturally. A canvas of colour that transforms the bathroom.

The Bathelier is the result of a creative process that pushes the boundaries of design, generating unique environments that breathe and inspire us. Environments that move us.

REMY  
MEIJERS

P. 20



CLAUDIA  
AFSHAR

P. 34



DANIEL  
GERMANI

P. 48



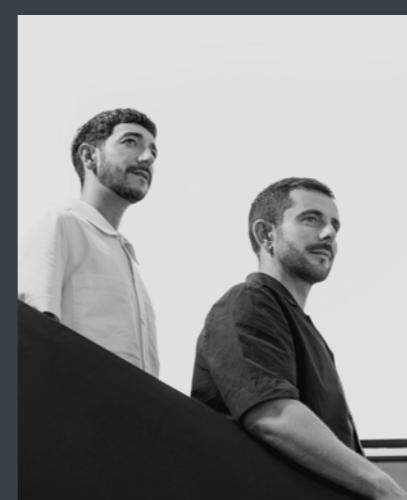
COLIN  
SEAH

P. 62



MUT  
DESIGN

P. 76



# REMY MEIJERS

X  
The Bathelier



“A bathroom should be a space to unwind and clear the mind. It is a place where you start and end your day, so it should be as calm and relaxing as possible. It should also have plenty of room to move around, which is why it is better to refer to it as a bathing space rather than a bathroom.”

In 1995, Remy Meijers graduated with honours from the Department of Interior Architecture and Furniture Design at the Utrecht School of the Arts. In his work, all elements are perfectly in place, but behind the apparent simplicity of his interior designs lies a coherent and comprehensive vision that has been continuously honed over two decades.

Meijers' oeuvre encompasses not only interiors, but also architecture, accessories and furniture. According to Meijers' philosophy, these are not separate elements, but rather complementary parts of an intelligible whole.



## Urban Hideaway

by Remy Meijers

Conceived as a set of architectural features that give character to the space, this bathroom has plenty of room for all the elements: a large shower for two, a large washbasin and a spectacular bathtub ideal for bathing.

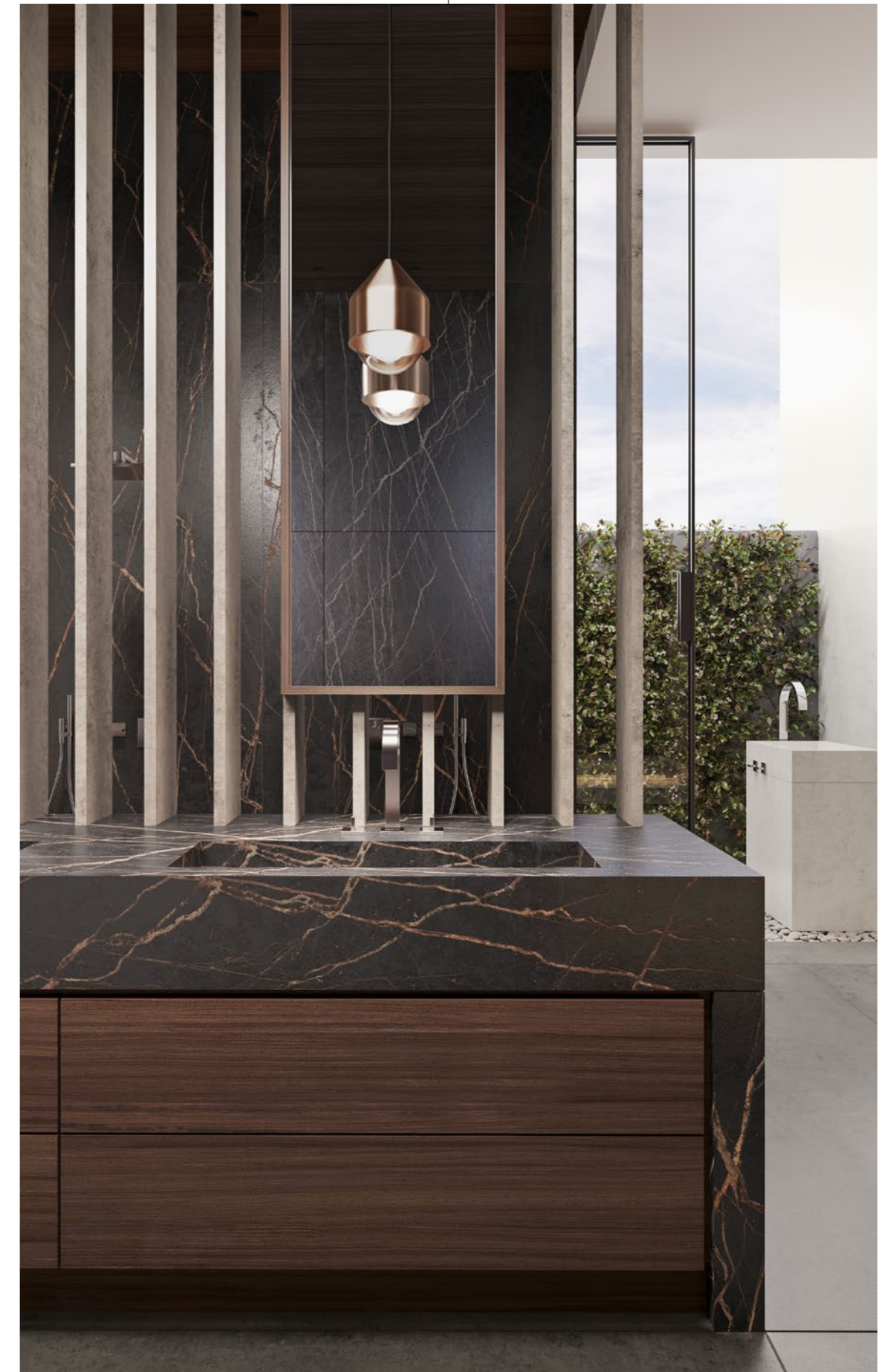
To complete this spa-like experience, the project features wooden elements for added warmth, a fireplace and an outdoor space with double shower and washbasin. The message is clear: self-care has become a fundamental part of our lives, and the bathroom is at the heart of it.

A large, open space where you can spend time and feel good about yourself. A place to unwind. Without distractions.



Designed by: Remy Meijers  
 Year: 2023  
 Washbasin: Reflection S  
 Shower tray: Dekton® Rainfloor  
 Dekton®: Lunar, Kreta and Laurent  
 Decoration: Vases designed by O4Home in collaboration with Remy Meijers

Divided into two separate yet complementary parts, one of the most impressive areas in the project is reserved for the bathroom, highlighting the importance of this space in everyday life.





A solid volume presides over the outdoor area, incorporating a washbasin in the form of a fountain that makes the most of the technical performance of the material.

Washbasin: Silence S

Areas connected to the outside, but with plenty of privacy, a large open shower, etc. The designer conceives a space that pushes the boundaries of the bathroom, moving towards new concepts of self-care.





## The Palazzo

by Remy Meijers

In contrast to the historic architecture, Remy Meijers uses lightweight, contemporary elements with an essentialist design and straight lines, while retaining original ceilings, doors and windows to add a sense of warmth. An experience that invites you to indulge in the natural fusion of old and new.

The aim of this project is to ensure that the original elements of the space are maintained with an updated approach. To this end, Meijers combines decorative elements, such as the ceiling mouldings and herringbone flooring, with contemporary materials, such as Dekton® and Silestone®, which are used for washbasins and shower trays.



Designed by: Remy Meijers  
Year: 2023  
Washbasin: Marie TOP L  
Shower tray: Dekton® Rainfloor  
Dekton®: Taga and Rem  
Silestone®: White Zeus  
Other products: Lamp designed by Keylight  
in collaboration with Remy Meijers



The shower area is the centrepiece, dominating the centre of the room. Its raised floor design preserves the original ceiling structure and gives it greater prominence.

A large volume made from Dekton® Rem doubles as a shower tray and is the central feature of the room. Visually connected to the screens through a large glass panel, Meijers suggests an outdoor space for contemplation.



The cladding, washbasin and shower surfaces are a contemporary twist to traditional materials in contrast to the wood and herringbone flooring.



# CLAUDIA AFSHAR

X  
The Bathelier



“Well-being has never been as important in the bathroom as it is today, with functionality and aesthetics playing a key role.”

Based in Los Angeles, Claudia Afshar and her studio have become an international benchmark in the field of interior design. Celebrities and developers worldwide rely on the designer to bring their most emblematic projects to life.

In them she blends stylistic references to the US with hints of the UK and London, her home town, where she began working while learning architectural design at Living Space, her mother's award-winning interior design firm. Her houses, marked by an elegant and contemporary décor, are regularly featured in magazines such as Vogue, Elle Décor and Rue Magazine.



## Ananda

by Claudia Afshar

In Hindu, Ānanda means, among other things, 'pure happiness', one of the highest states of human being. Thus, Claudia Afshar has created a striking open plan space that conveys warmth through a design of grooved materials.

She demonstrates the ability of small details to bring a fresh look to the bathroom, with playful accents and textures on all surfaces.



Designed by: Claudia Afshar  
Year: 2023  
Washbasin: Simplicity  
Shower tray: Dekton® Rainfloor  
Dekton®: Umber and Nacre

Designed to capture the essence of Dekton®, Claudia Afshar elevates the Simplicity washbasin on a bespoke pedestal in Dekton® Umber, which is grooved as a result of a delicate cutting of the material.





The designer envisions a warm space that embraces the user through the inherent connection with the earth and nature by Dekton® colours Umber and Nacre.



## Sawaru

by Claudia Afshar

Touch is one of our fundamental senses for understanding our relationship with the environment. It gives us a nuanced perception of surfaces. With this in mind, Claudia titled her project 'Sawaru', the Japanese word for 'touch'.

A space conceived as a sanctuary, which explores the bathroom as a place of connection and self-care. Sawaru welcomes visitors through an entrance that conveys calm and tranquillity. Light tones and textures combine perfectly with the smooth curves, creating an atmosphere for personal care and complete relaxation. This bathroom offers a dream spa experience.



Designed by: Claudia Afshar  
 Year: 2023  
 Washbasin: Reflection M  
 Shower tray: Dekton® Rainfloor  
 Dekton®: TK06 Marmorio and Nacre  
 Silestone®: Nolita



Neutral and serene, the interior of this bathroom lies somewhere between the concepts of a personal spa and a homely haven. A recessed arch frames the shower area in the form of a bench, exploring ancestral hygiene rituals from a contemporary perspective.

Claudia experiments with the possibilities of materials, pushing the washbasin to the limit. In this way, by repeating a curved shape, she manages to create a skirt full of volume.

Featuring a minimalist and relaxed design, the entire bathroom project revolves around the relationship between curved and straight lines, generating a leisurely pace that allows you to relax.





# DANIEL GERMANI

X  
The Bathelier



“A visually appealing space is no longer enough to satisfy people. Their needs and behaviours are key to creating an engaging and holistic experience and, more importantly, for well-being to flourish.”

After graduating in architecture in his native Argentina, Daniel Germani spent almost a decade in Europe working on different creative and business projects. A highly innovative vision of design has seen him work as a creative director and designer for some of the world's most inspiring companies.

His multi-disciplinary studio, specialising in product design, design consultancy, interior design and architectural renovation, is based in Phoenix, Arizona, but Daniel travels around the world doing design work in partnership with leading global brands. His rationalist yet distinctive style is clearly influenced by the modern and Bauhaus movements. Its philosophy is simple: good design should always be honest and inspiring.



## Ceppo

by Daniel Germani

In this project, Germani develops two separate vanity areas to adapt to the different needs of the users of the space. At the same time, it creates a more pleasant and playful feeling in the shower and bath area. The space maintains a balanced effect of personal sanctuary, where small daily rituals of self-care are explored as a way of enhancing well-being.

With a deep respect for the materials, Germani achieves a calm and serene space of large dimensions, in which the bathroom stands as the centrepiece of the home.

Designed by: Daniel Germani  
Year: 2023  
Washbasin: Silence M  
Shower tray: Dekton® Rainfloor  
Dekton®: GK07 Ceppo  
Taps: Taps from Sailing collection by Fantini





The brutalist feel of the cladding, which echoes the traditional Ceppo di Gré stone from Lombardy, highlights the subtle, warm design accents throughout the space. It includes two large washbasin areas designed with Dekton® due to its high performance: resistance to stains, scratches, knocks, etc.

The Silence washbasin lives up to its name, providing a relaxed look and subtle lines. In combination with the Ceppo series from Dekton®'s new Pietra Kode collection, it underlines the timelessness of the materials used in the space.





## Travertino

by Daniel Germani

Contemporary, intimate and sophisticated features make up a balanced project. Two walnut vanity units and a shelf provide additional storage space, allowing you to discreetly store toiletries or decorative items.



The view of the courtyard with its greenery is a peaceful oasis for relaxation. The shower, which is in a separate area, is a way of escaping from everyday life through the ritual of water. In this project, Germani transports us to Rome in all its glory.



The result is a clean and serene bathroom, which embraces the experience of light flooding the space. This water room reclaims a leading role that explores ancient bathing rituals from an updated perspective.

In a wilful confusion between indoors and outdoors, Germani recreates a space for self-contemplation that goes beyond the traditional boundaries of the bathroom.

The project addresses several strategies that, when approached in a specific way, complement each other to give a complete turnaround to the bathroom, transforming it into a more open and flexible residential space that breaks with conventions.

Designed by: Daniel Germani  
Year: 2023  
Washbasin: Silence M  
Shower tray: Dekton® Rainfloor  
Dekton®: TK06 Marmorio and TK05 Sabbia  
Taps: taps from Icona Classic collection by Fantini

# COLIN SEAH

X  
The Bathelier



“The ideal bathroom is a sanctuary for holistic wellness, where body and mind are cleansed and nourished. Away from the hustle and bustle and distractions of the world around us, it offers a moment to immerse ourselves in healing sounds, aromas and textures.”

Colin Seah trained as an architect in the USA, but today he is the Design Director and founder of the Singapore-based studio Ministry of Design (MOD). His radically innovative approach to design and architecture leads him to question conventions and redefine spaces in every project.

Beyond spaces, Seah creates physical reflections on how design can act as a catalyst for change. He has overseen over 100 projects worldwide and has received numerous awards, including 'Designer of the Year' by the International Design Awards USA (2010) and 'Rising Star in Architecture' by Monocle.





## The Collage

by Colin Seah

In life, as in art, we seek balance and harmony when its complexities threaten to pull us in different directions.

The Collage strikes a balance between a range of different and even contrasting colours to create a unique moment of holistic harmony. The inherent beauty and challenge of a collage is to achieve an "elusive balance". When this is achieved, the whole magically becomes more than the sum of its parts.



The Simplicity washbasin fits into a large volume, featuring a countertop that takes advantage of the large dimensions of Silestone® materials to build an extra-long surface to adapt to the space.



Chaos and order are the two cornerstones of Seah's project.

A bathroom space that explores the diversity of nature and the mix of materials, generating a collage that integrates the elements of the shower tray, in combination with the cladding, and the washbasin.

Designed by: Colin Seah  
Year: 2023  
Washbasin: Simplicity  
Shower tray: Rainfloor  
Dekton®: Soke and Laurent  
Silestone®: Et Serena  
and Ethereal Noctis



## The Cave

by Colin Seah

Personal hygiene and bathing habits are undeniably primitive and fundamental to human beings. From this premise, Colin Seah explores a space reminiscent of a cave and introduces us to a primitive way of relating to the place in which we live.

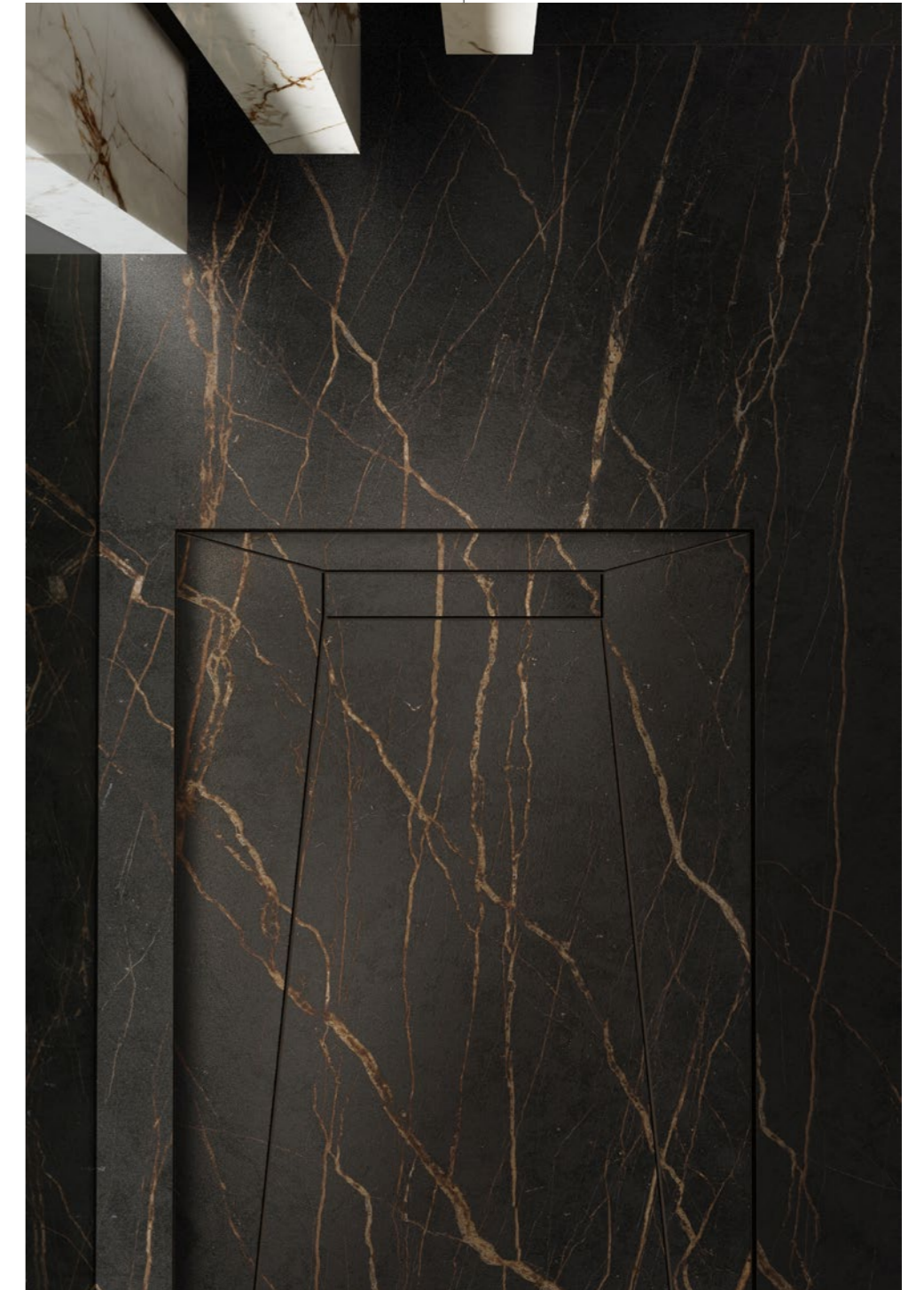
In this design, rituals come to life through the creation of a dramatic bathroom, characterised by sloping walls in deep earth tones, integrated lighting and a huge window at the back. This bathroom also reminds us of the most primitive form of architecture: the cave.



Designed by: Colin Seah  
 Year: 2023  
 Washbasin: Simplicity  
 Shower tray: Dekton® Rainfloor  
 Dekton®: Bromo, Laurent  
 and Awake  
 Silestone®: Coral Clay Colour  
 and Sienna Ridge  
 Decoration: Gessi



The volume of the washbasin, made with the Reflection model integrated with Dekton® Laurent, recreates an almost mystical atmosphere. In the same way as an altar, this object elevates the moment of contact with water to a ritual, pondering how the bathroom has become an essential space for self-care and health.



An opening in the façade frames a privileged view of the exterior and floods the interior with plenty of natural light. This impressive area is reserved for the shower tray, making this moment a unique experience.

# MUT DESIGN

X  
The Bathelier



“Reconnecting with our body and mind to reach the ideal of healthy living has become a fundamental part of how we overcome stress in our lives. For us, the bathroom is that private, safe haven where this dialogue takes place.”

Specialising in product design, Alberto Sánchez and Eduardo Villalón are the design duo behind MUT Design, one of the leading studios on the international design scene and clear representatives of the new wave of Valencian designers. Since it was founded in 2010, MUT Design has received continuous recognition at major industry awards.

Its thoroughly contemporary style is a perfect balance between an essentialist design and a careful selection of materials and finishes. Today they are among the most popular and renowned designers of their generation and have collaborated with some of the most inspiring brands in design.





## The Resilient House

by MUT Design

A home is as essential as a roof and four walls to shelter us, but above all it is the place that gives us the privacy and freedom we need to connect with ourselves, rethink our lifestyle and value well-being. Based on this premise, MUT Design suggests a space inspired by a kind of Roman bath in ruins delimited by the walls of a quarry, alluding to the origin of Cosentino®.



As an interior architecture programme, MUT Design makes use of a series of volumes with Dekton® to create hollows in the space, completed with a bathtub and a washbasin where the Simplicity model is integrated. This project proves the material's ability to adapt to any type of surface and functional solution.



A completely uniform range of materials makes for a minimalist and serene space, interrupted only by the natural stone that emerges in reserved areas. The contrast highlights the clash of materials, thus elevating the presence of both.



Designed by: MUT Design  
Year: 2023  
Washbasin: Silence L  
Shower tray: Dekton® Rainfloor  
Dekton®: Nacre



## Ellipse

by MUT Design

In this project, MUT Design is inspired by the expressionism and organic architecture of Torres Blancas in Madrid. The curved, spiral and seashell shapes so often found in nature are used here as an expression to convey emotions through shapes and textures.

It is a space that serves not only as a formal experiment but also as a functional one. To achieve this, a partitioning element plays with the different levels of privacy in an open bathroom space formed by truncated cylindrical modules that facilitate the flow from inside to outside and vice versa, and also explores new ways of understanding this piece as a fundamental part of today's home.



Designed by: MUT Design  
Year: 2023  
Washbasin: HLine Urban  
Shower tray: Dekton® Rainfloor  
Dekton®: VK02 Avorio and Argentium  
Furniture: Sancal chair by MUT Design

Different spaces are generated through the volumes, playing with the levels of privacy of an open-plan bathroom. Using the same slat construction system, the HLine Urban washbasin is housed in a pedestal.

A shower area is concealed behind the cylindrical element, which ensures privacy, but is directly connected to the large exterior window.



# State-of-the-art technology and innovative design for your bathroom. Beauty and functionality for a customised space.

At Cosentino® we have developed a wide collection of surfaces and features for bathrooms. From wall and floor claddings in different yet perfectly balanced formats, colours and textures, to attractive washbasins and shower trays, carefully designed with great attention to detail and simplicity.

Change your vision of the bathroom. An all-round solution of high aesthetic and functional value to turn the bathroom into a complete experience of well-being and visual comfort.



The avant-garde design and the quality of Cosentino® materials merge in timeless bathrooms made to be lived in.

Atmospheres designed by Cosentino® in which quality, sophistication and a holistic view of the space are paramount. Inspiration and solutions for any decorative style that will help you find your ideal bathroom thanks to Cosentino®'s extensive portfolio of materials and products.

From industrial character to Mediterranean simplicity. A wide range of spaces rich in details and finishes to connect with any style.

Mediterranean



Classic



Industrial



Timeless





In this bathroom with a pure design and straight lines, natural light takes on a material dimension.

The play of light and shadow accentuates the contrast created by the subtle combination of two very similar, but at the same time very different Dekton® colours: VK03 Grigio, a colour inspired by Grigio Alpi natural stone, and VK04 Grafite, a colour that reinterprets dark limestones. The difference in colour between these two shades of grey helps to create contrasts between light and dark full of intentionality, as in the lintels of the window

arches or in the transition space between the water area and the bedroom. VK04 Grafite also helps to accentuate the powerful beauty of the Reflection washbasin by enclosing it in a monolithic pedestal with a free-standing tap. The almost zero porosity of Dekton® ensures that this design will remain unaltered over time. The same applies to the Exelis shower tray, which is made from Silestone®.



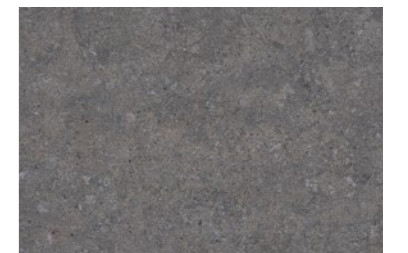
Silestone® Exelis



Dekton® Reflection S



Dekton® VK03 Grigio



Dekton® VK04 Grafite





Dekton® TK06 Marmorio



Dekton® TK05 Sabbia



Silestone® Exelis



Dekton® Silence S



Inspired by the timeless beauty of Travertine marble, this bathroom reinterprets the concept of Roman baths to create a modern space with relaxed lines.

Thanks to the use of two totally different patterns based on the same stone, the sense of spaciousness is enhanced. The colour chosen for the walls was Dekton® TK06 Marmorio, a recoding of Travertino Navona, the stone out of which ancient Rome was built. Its distinctive parallel lines add solemnity to the whole. As for the flooring and washbasin area, the colour chosen was Dekton® TK05 Sabbia, a stylised version of Travertine characterised

by a strong horizontality and veining that maximises the expressiveness of natural stone while giving it the highest performance of ultra-compact stone. TK05 Sabbia was also used for the Silence washbasin, achieving total integration, while the simplicity of Silestone® Exelis was chosen for the shower tray.



The stone that has shaped contemporary Milan has become one of the main trends in decoration.

Both residential and commercial spaces surrender to the beauty of Ceppo di Gré, whose whimsical structure features large, attractive grey and blue patches.

The new GK07 Ceppo redefines this beautiful pattern to give it greater visual strength and the technical features of the ultra-compact Dekton® stone. Large format slabs allow for a more seamless design, with fewer joints. This finish, used on floors and skirting boards, is combined with VK04 Grafite, another of the colours from Dekton®'s new collection, Pietra Kode. To create a contrast with the stone tones, two Silestone® designs were chosen: the shower tray features the Exelis model; while the Marie TOP L was the model chosen for the countertop washbasin.



Dekton® GK07 Ceppo

Dekton® VK04 Grafite

Silestone® Exelis

Silestone® Marie TOP L



Dekton® VK03 Grigio



Dekton® VK01 Nebbia



Silestone® Exelis



Dekton® Silence L



The simplicity of Vicenza stone and the purity of Dekton®'s large format design come together in VK03 Grigio and VK01 Nebbia.

Both contribute to creating a Japandi-style bathroom where the warmth of the rich taupe grey range of VK03 Grigio combines with the wooden elements and creates a contrast with the creamy base dotted with spots of VK01 Nebbia, the colour used for the countertop and the

integrated Dekton® Silence washbasin. The shower tray features the Exelis model by Silestone®, in large format. This surface has very low porosity, which reduces daily maintenance and improves hygiene in the bathroom.



Dekton® VK01 Nebbia



Dekton® VK04 Grafite



Silestone® Exelis



Dekton® Reflection L



Nature is very present in this bathroom that opens onto an interior garden and features a combination of materials and textures in neutral tones.

In dialogue with the wood and rattan design elements, Silestone® and Dekton® surfaces blend seamlessly into the overall design. The space features VK01 Nebbia on walls and floors, bringing a calm and classic touch with its texture inspired by Italian Vicenza stone.

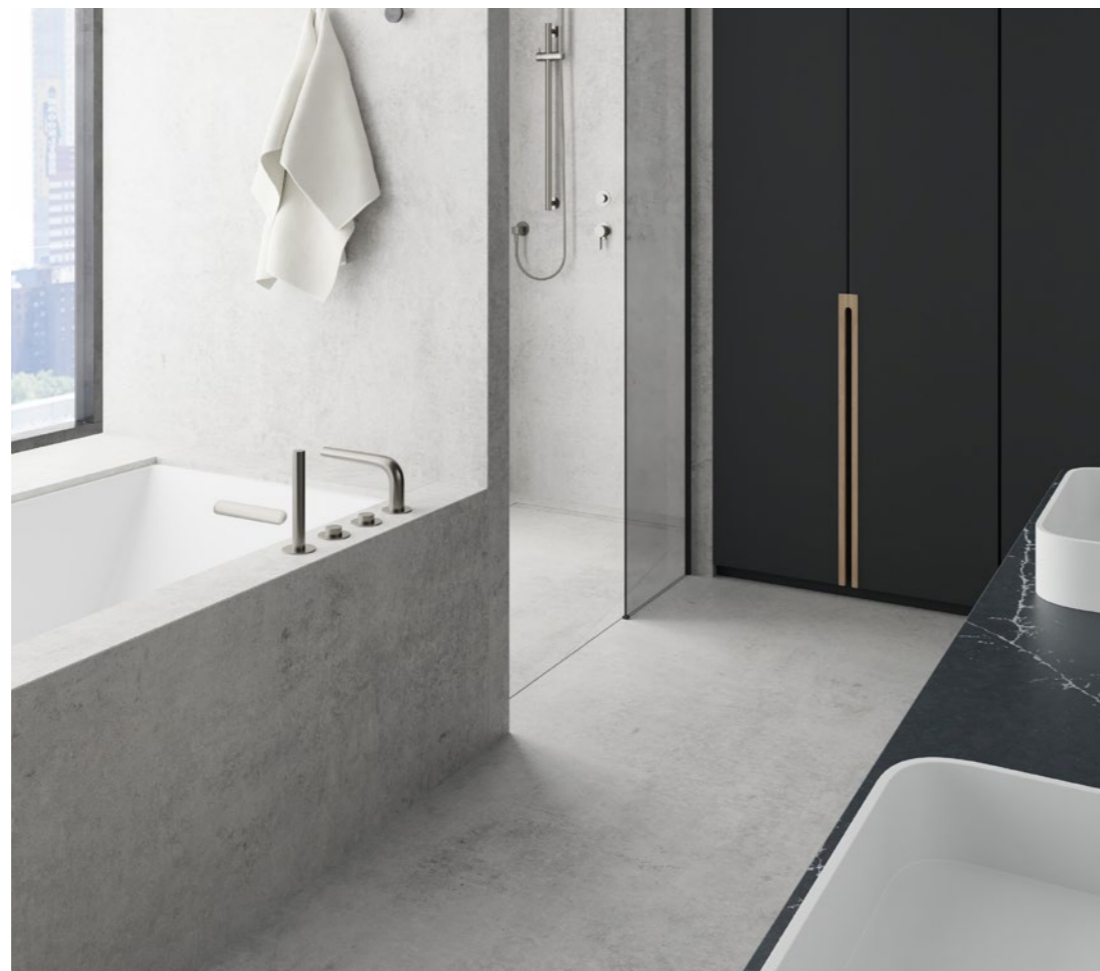
This light grey tone is combined with the deep Dekton® VK04 Grafite, which was used for the Dekton® Reflection washbasin and the floors in the wet area. Its dark background features a pattern that creates a sense of continuity while reinterpreting the texture of limestone. The perfect frame for the Silestone® Exelis shower tray.



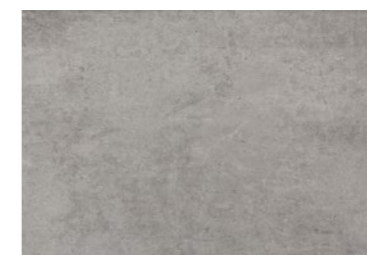
Modern and elegant, this bathroom presents a space in which straight lines take centre stage.

The balance between the forms creates a sculptural atmosphere featuring a two-colour combination that spans a wide range of greys and blacks. In this composition, both Silestone® Charcoal Soapstone and Dekton® Kreta have an equal role.

Used on floors, walls and bathtub cladding, the texture of Dekton® Kreta adds depth and creates a greater sense of spaciousness thanks to its light tone inspired by classic cement floors. Meanwhile, Silestone® Charcoal Soapstone gives the washbasin countertop a dramatic effect, adding an elegant touch. Above it, Silestone® Marie TOP L washbasins add a touch of finesse with their rounded corners. Finally, the shower tray features the Rainfloor model by Dekton®, perfectly integrated thanks to the use, once again, of Dekton® Kreta.



Silestone® Charcoal Soapstone



Dekton® Kreta



Dekton® Rainfloor



Silestone® Marie TOP L



Dekton® Blanc Concrete



Silestone® Negro Tebas

This bathroom with a renewed industrial style combines metal elements, wooden beams and exposed brick with innovative Cosentino® surfaces.



Silestone® Symmetry M



The ecru shade of Dekton® Blanc Concrete aged white fits perfectly with this decorative style. Its spots and small veins in shades of white and beige make the space look bigger and enhance the natural light flooding in through the large windows.

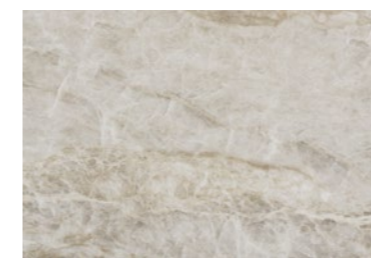
To create a contrast, the surface chosen for the countertop and the three washbasins with their simple lines and geometrical look was the pristine, glossy Silestone® Negro Tebas. Supported by a lightweight, aged metal frame and complemented by three large, dark-framed mirrors, together they create a balanced and captivating piece.

Monolithic forms give character to this temple-like bathroom in which textures inspired by natural stone establish a dialogue with the surrounding landscape, which is connected to the bathroom through floor-to-ceiling openings.

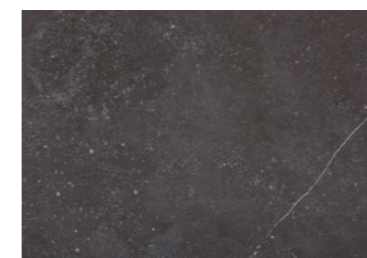
Dekton® Fossil, a colour featuring a very powerful natural finish with the aged look typical of fossilised stones, was the material chosen for both the countertop and the floor. In dialogue with this natural texture, Dekton® Taga, an elegant grey shade with a marbled look inspired by Taj Mahal quartzite, was the material chosen to clad the walls.



The design of the washbasin is undoubtedly the star of this space. The Custom Washbasin in Silestone® Negro Tebas is mounted on a horizontal base that runs through the space and counterbalances the verticality of the rest of the elements.



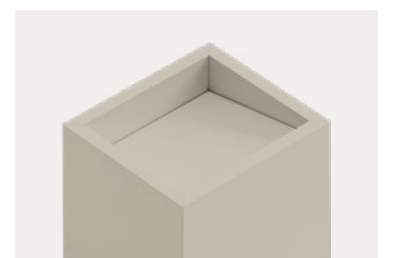
Dekton® Taga



Dekton® Fossil



Silestone® Negro Tebas



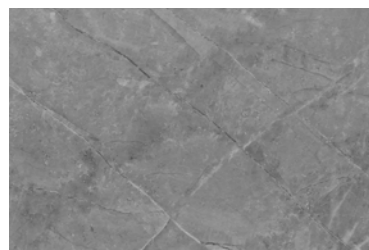
Custom Washbasin



A uniform and elegant look characterises the style of this contemporary bathroom in which order is expressed through the materials used.

Straight lines dominate the space, accentuated by the minimalist design of all the elements and, more specifically, of the Dekton® Simplicity washbasins. To create a block-like feel, a sense of unity, a single Dekton® colour was chosen for walls, floors and washbasins.

Specifically, the colour chosen was Dekton® Sogne, which gives a neutral feel to the space. Its grey shade ranges from the classic cement textures to the typical veining of natural stone, helping to create an atmosphere that breaks the boundaries between the industrial and the classic. An architectural proposal that is complemented by black taps and backlit mirrors that add dynamism to the space.



Dekton® Sogne



Dekton® Simplicity





Silestone® Marie TOP L



Dekton® Rainfloor

The updated classic style of this luxurious bathroom is expressed in every detail.



Dekton® Awake



Dekton® Nacre



The use of light, neutral colours, contemporary touches such as black taps and a sophisticated texture inspired by natural stone create a space that exudes a quiet elegance. To maximise the light, the surfaces, furniture and Marie TOP L washbasins feature light colours.

Used on the washbasin area, floor and walls, Dekton® Awake shines in its own light and elevates the tone of the entire room. Its design inspired by Paonazzo stone

gives an elevated look with its thick veins in shades of light grey, terracotta cream and subtle blues. To define the wet area, such as the bathtub and shower – perfectly integrated thanks to the use of Dekton® Rainfloor–, the colour chosen was Dekton® Nacre, a more neutral tone that contributes to creating a more relaxed space.



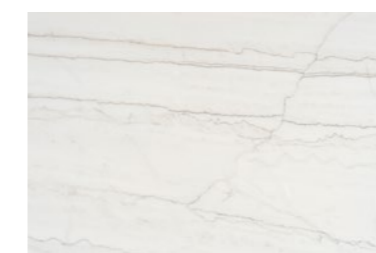
A combination of black and white dominates this urban style bathroom with city views.

The elegance in this bathroom comes from the elevated design pieces used, such as the golden taps, the black freestanding bathtub and the striking front vanity unit supporting the geometrically shaped Dekton® Silence washbasins.

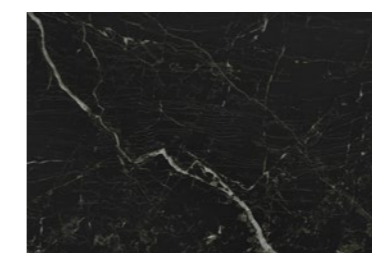


These elements create a dialogue with the contemporary feel of Dekton® Neural, whose design provides a strong sense of continuity. Its fine, pale veins run through its marbled background in light cream tones, creating an enveloping effect.

To create contrast and separate the different spaces, the walls of the shower area – which features a Silestone® Exelis shower tray – are clad in Dekton® Somnia, a black colour with brown and white veins.



Dekton® Neural



Dekton® Somnia



Silestone® Exelis



Dekton® Silence M





Dekton® Nacre



Dekton® Umber



Dekton® Rainfloor



Silestone® Integrity Evita L

The honesty of this rustic Mediterranean bathroom design is made clear in every aspect.

The harmony and commitment to tradition is evident in every aspect of this bathroom, from its vernacular architecture to its natural materials and finishes. To create this vibrant atmosphere, a combination of two warm colours was used on the walls and floors. Both bring innovation and, at the same time, fit in perfectly with the style.



The powerful terracotta shade of Dekton® Umber is, probably, the star of the space. Alongside this colour, the cream tone of Dekton® Nacre – a colour with a texture similar to that of lime plastering and featuring subtle details and a degraded texture – was also used, bringing authenticity and character to the space, creating a contrast and establishing a dialogue with Umber. The Silestone® Integrity Evita L washbasins blend subtly into the space, without pretension. In the shower area, clad in Dekton® Nacre, the use of a Dekton® Rainfloor shower tray provides continuity to the room.



Dekton® Eter



Silestone® Symmetry S

This minimalist, single-coloured bathroom goes for all black.



The combination of eclectic elements, such as a classic style mirror and a contemporary vanity featuring a Silestone® Symmetry washbasin, is rounded off by the categorical choice of this colour, which manages to create a sensorial and deep space. The result is a quiet atmosphere, conceived to create a cosy private area, totally innovative.

To achieve this sense of uniformity and to create a perfect black space for the design elements, Dekton® Eter was chosen. Its dark granite structure in black and grey tones gives this surface a rich and complex texture, perfect for creating such contemporary atmospheres as this trendy bathroom.



Silestone® Blanco Zeus



Dekton® Helena 22



Silestone® Marie TOP L



Silestone® Kador Suite

The quietness of white is interrupted and overwhelmed by an elegant combination of textures and finishes in this contemporary bathroom.



A calm and, at the same time, very elegant atmosphere thanks to the many bronze details, such as the alcove frames, round mirrors and taps. In addition, two Cosentino® surfaces were chosen to elevate the design of the room: Silestone® and Dekton®.

The pure and neat texture of Silestone® White Zeus was chosen for floors and the washbasin – featuring the rounded design Silestone® Marie TOP L–, the Silestone® Kador Suite shower tray with anti-slip strips,

and one of the walls. For all applications, a glossy, light-reflecting finish was chosen, creating a perfect dialogue with the fine crackle effect of Dekton® Helena, the colour used for the front of the washbasin unit and the rest of the walls in the room. This rich colour featuring a combination of white and grey shades with patterns inspired by Onix natural stone, elevates the design, adding elegance and sophistication.

Re-imagine the most personal space in your home. Create a unique experience in which the most beautiful and functional Cosentino® surfaces are transformed into unique, warm and exclusive spaces.

From wall and floor claddings in different yet perfectly balanced formats, colours and textures, to attractive washbasins and shower trays, carefully designed with great attention to detail and simplicity. Solutions of great aesthetic and functional value to suit every requirement and style of bathroom, which redefine the way in which we experience such a personal space and feeling of well-being.



Villa Hartl / Promenade, Austria



## Casa Contreras La Ventana

Mexico City, Mexico

A balanced design using  
Dekton® in a luxury  
home in Mexico City



Dekton® Opera





## U Interior Design Casa Decor 2022

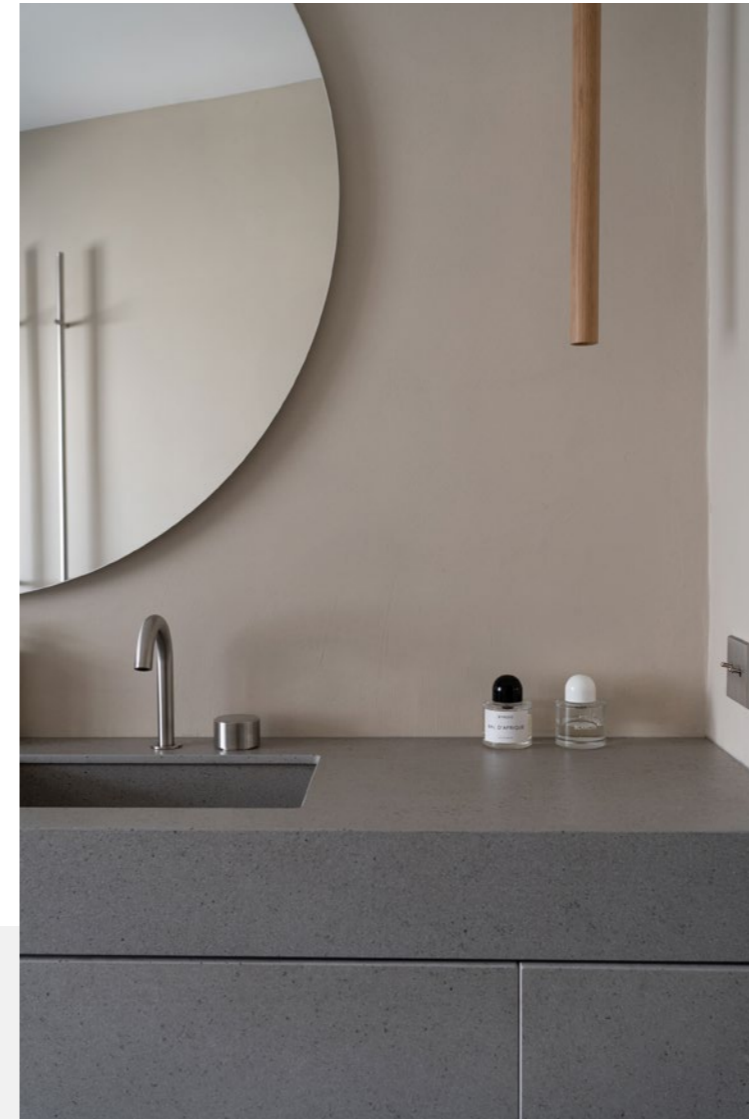
Madrid, Spain

A bathroom combining modernity and classical design inspired by early 20th century Paris and reminiscent of the Art Deco style, the space features Jacob Delafon's 'Grand Boulevards' bathroom collection.



Dekton® Awake

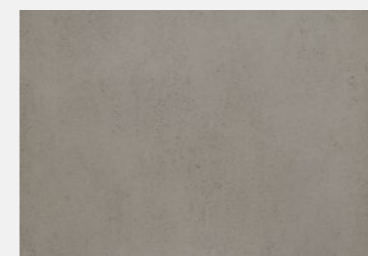
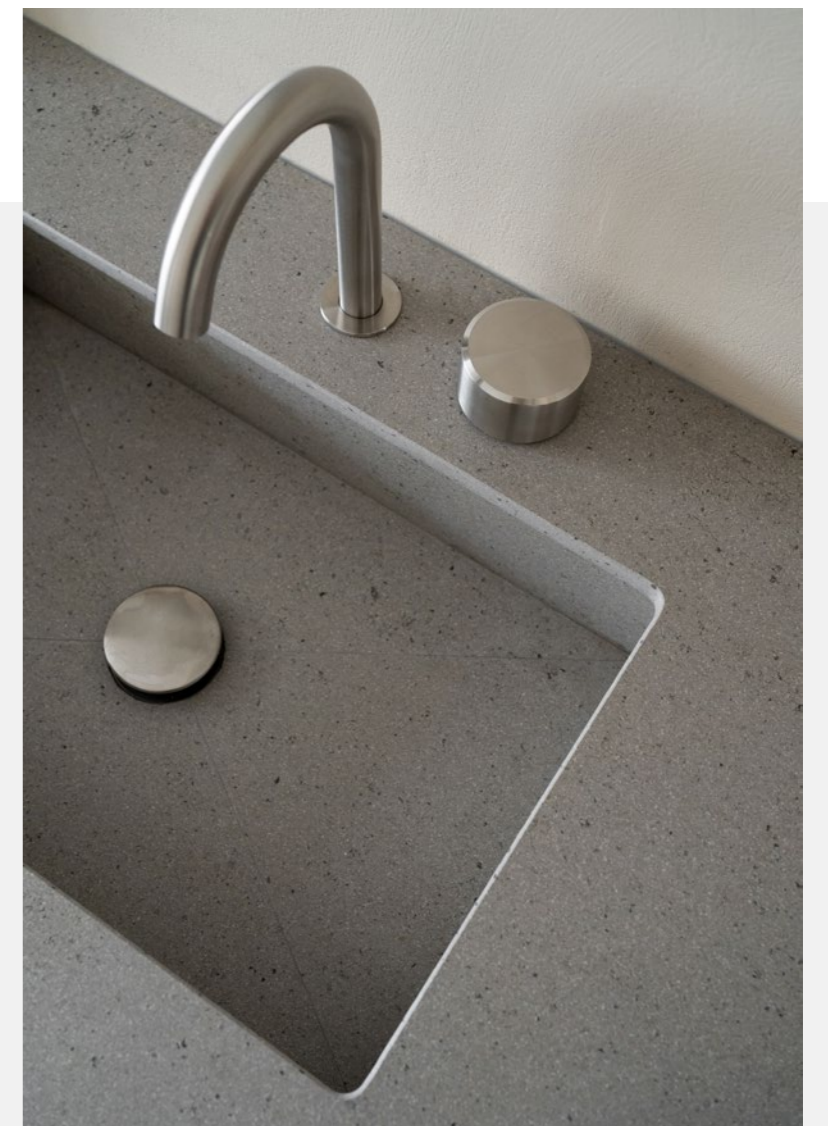




## J'aime tout chez toi

Paris, France

Studio Costa Molinos  
turns to Dekton® for the  
innovative vanity unit in the  
home of French influencers  
J'aime tout chez toi.

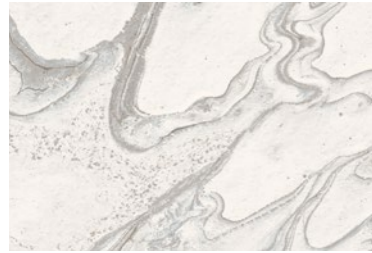


Dekton® Strato

## Single-family home

Seville, Spain

The bathrooms in the house have been designed as true luxury spaces that act as a spa.



Dekton® Liquid Sky 22





## Flat in Tel Aviv

Tel Aviv, Israel

A total look in Dekton® Opera for a feeling of spaciousness in the main bathroom, while at the same time conveying a sense of monumentality.



Dekton® Opera





Silestone® Pearl Jasmine

## North House

Melbourne, Australia

The bathroom spaces in this house are both modern and timeless and, above all, very attractive.

The bathroom furniture is wall mounted to create a clean, floating visual effect.





## Art House in Dallas

Dallas, Texas, USA

Dekton® Dancæ is reminiscent of sand moving in the desert thanks to the different shades of beige that cross its surface and capture the essence of the movement.

Inspired by the quartzite of the Taj Mahal, Dekton® Arga, from the Stonika collection, recreates the luxury of natural stone without the need for maintenance.



Dekton® Dancæ



Dekton® Arga

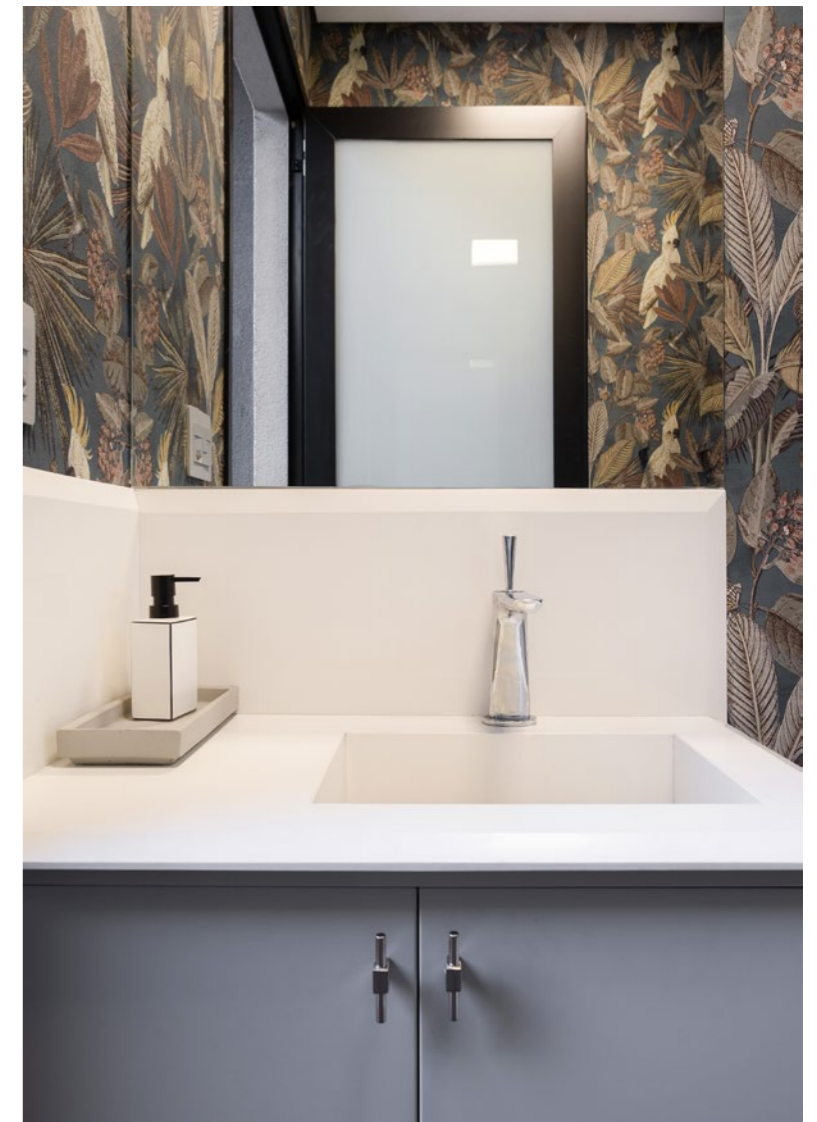




## Home in R o Claro

R o Claro, S o Paulo, Brazil

The bathrooms are designed to the millimetre, combining countertops with lacquered wooden doors, designer handles and wallpaper.



Silestone® White Zeus



Silestone® Noka



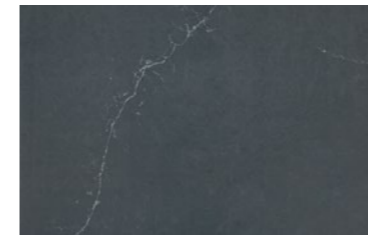
## Girasol building

Madrid, Spain

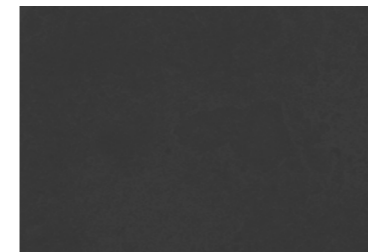
A range of dark tones that dominate the bathrooms, which are made entirely in Silestone® Eternal Noir or in a combination of Dekton® Eter and Silestone® Charcoal Soapstone.



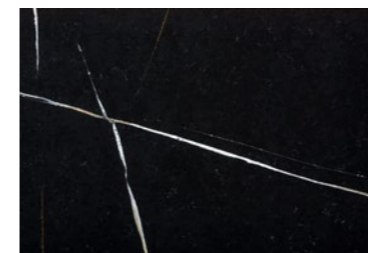
Silestone® Marie TOP L



Silestone® Charcoal Soapstone



Dekton® Eter



Silestone® Eternal Noir



Silestone® Symmetry

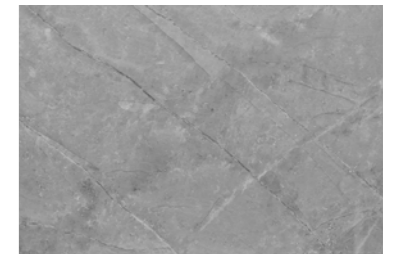


Silestone® Simplicity





Dekton® Portum

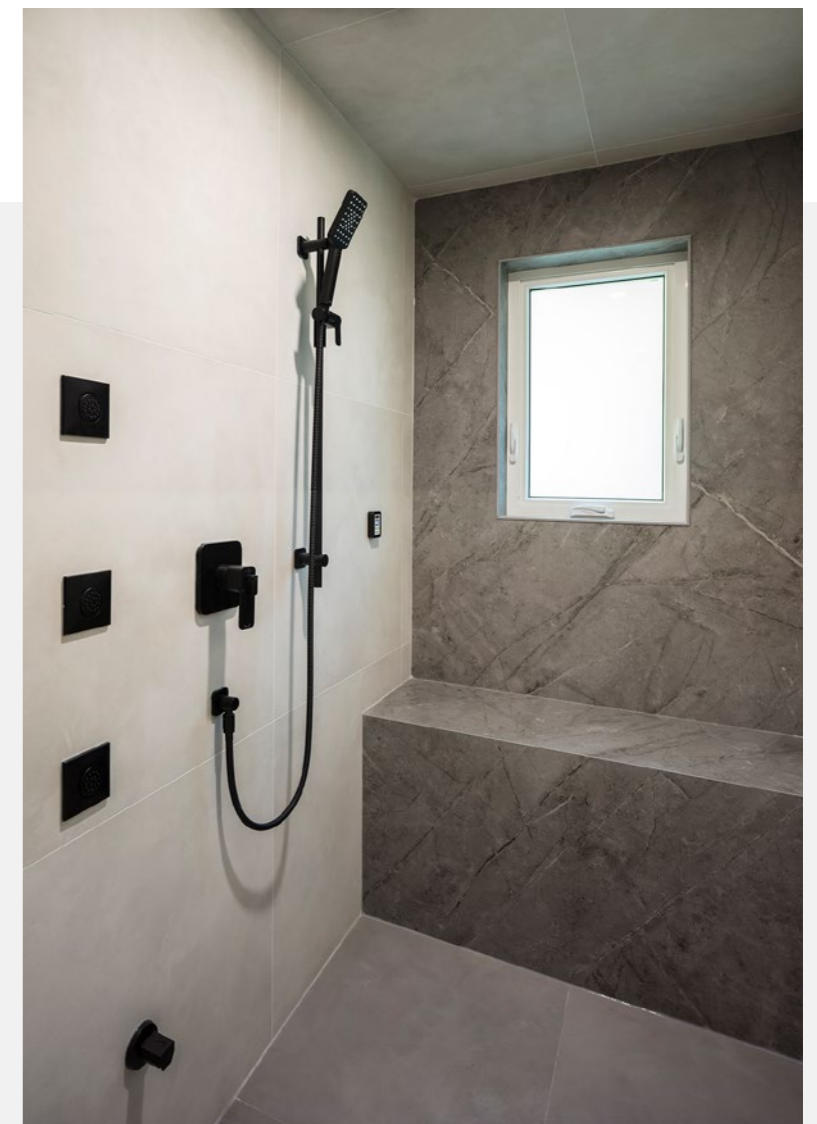


Dekton® Vera

## Amble Green Residence

Canada

The bathroom spaces in this house are the definition of relaxation and elegance.



## Design Zage

Singapore

By combining style and functionality, Dekton® Bergen creates a sophisticated and timeless atmosphere in the master bathroom.



Dekton® Bergen





## Flat in Tel Aviv

Tel Aviv, Israel

Dekton® Laurent was the surface chosen for the master bathroom, a colour that provides quite a 'masculine' look. As for the guest bathroom, the colour chosen was the warm Dekton® Liquid Shell, which was used in combination with Dekton® Aeris for the floors.



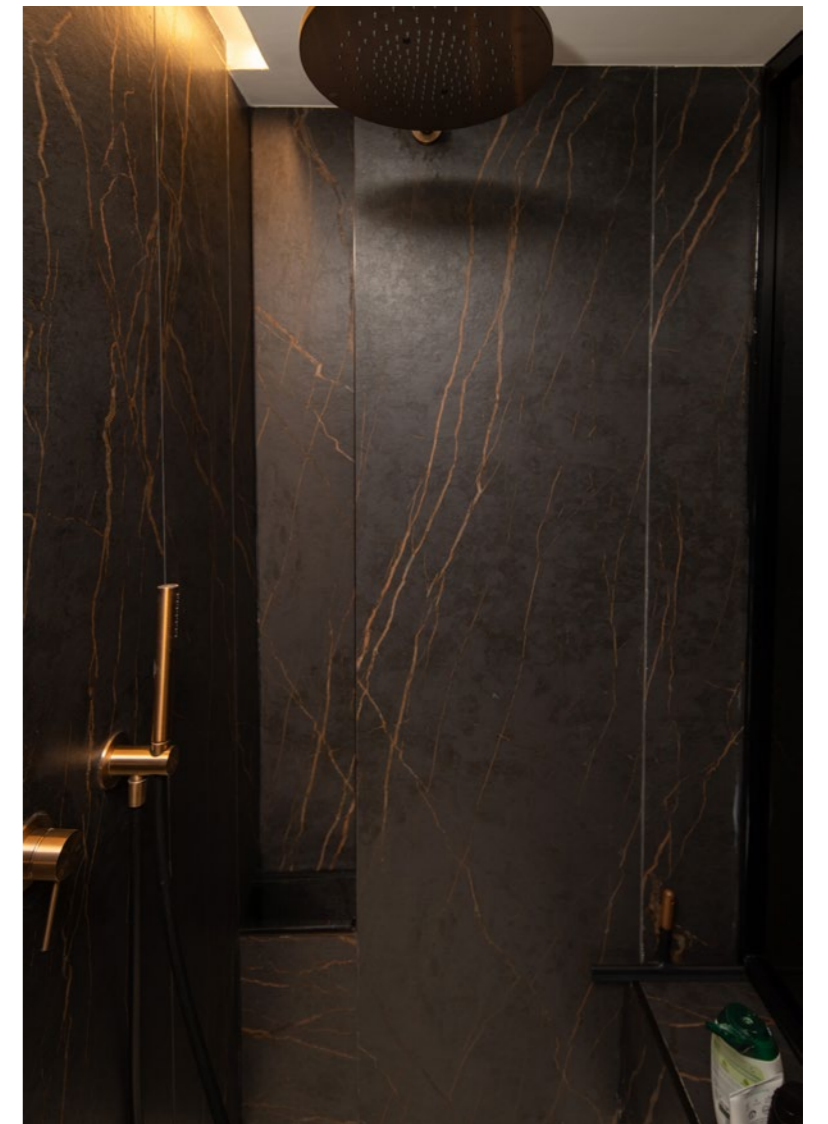
Dekton® Aeris



Dekton® Liquid Shell



Dekton® Laurent

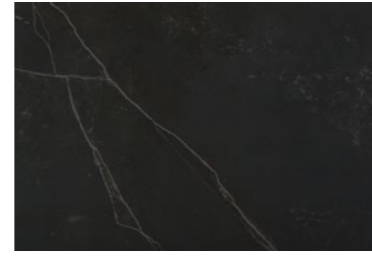




Dekton® Lunar



Dekton® Kreta



Dekton® Kelya



## Home in Pradejón

La Rioja, Spain

For the cladding of wet areas, the large format model was used to minimise the number of joints, which are always vertical. This helps in terms of functionality and gives it a more attractive appearance.



# Overall bathroom concept



## Flooring and cladding

Possibility to combine washbasins and shower trays with all Silestone®, Dekton® and Sensa surfaces and their wide variety of formats and finishes.



## Washbasins and countertops

Washbasins and countertops in different Dekton® and Silestone® finishes, which allow them to be combined with the rest of the bathroom elements.



## Shower trays

Made of Dekton® Grip/Grip+ and Silestone® sandblast, our washbasins and shower trays can be customised to any space.



# How do we make it?

## Custom design

All our products are manufactured to order using fast manufacturing systems. This allows us to offer a tailor-made design for each client.



## Total integration

Visual and aesthetic continuity. The same surface for all of your bathroom: floor, cladding, shower tray, washbasin, countertop...



## Variety of formats, colours and textures

Cladding and flooring in different formats, colours and textures in perfect balance with Silestone®, Dekton® and Sensa materials.



## Large format

Fewer joints ensure greater cleanliness and hygiene. The extra-large slabs give a sense of spaciousness.



# Materials

The state-of-the-art materials developed by Cosentino® bring unique, warm and avant-garde spaces to life.

The high performance and the variety of formats, colours and textures of Cosentino®'s materials allow for countless design possibilities. Silestone®, Dekton® and Sensa contribute to the design of visually uniform spaces that seamlessly integrate all the features: floors, cladding and furniture, washbasins, countertops and shower trays.

Innovative materials that inspire the design of the future and create exclusive bathroom spaces in which beauty and functionality go hand in hand.



# Dekton®. The Ultra-compact Stone.

25  
Year  
Warranty  
DEKTON®

Dekton® is an ultra-compact stone that takes inspiration from the beauty and processes of nature and reinterprets them through unique technology.

Dekton® is functional beauty in a high performance material that breaks the boundaries of architecture and design.

## Dekton® is stone

Dekton® is a sophisticated blend of more than 20 minerals extracted from nature.

Dekton® is a totally inorganic material with unbeatable hardness and strength properties that does not deteriorate.

## Dekton® is ultra-compact

Dekton® is the only material in its sector that uses a 25,000 tn press in its ultra-compact process.

Dekton®'s exclusive press generates a pressure equivalent to 2.5 times the weight of the Eiffel Tower, resulting in a material with no weak points and almost zero porosity.

## Dekton® is sintered

Dekton® perfects in a few hours what nature creates in thousands of years.

Particle Sintering Technology (PST) binds mineral particles together to achieve a homogenised and compacted internal structure.

## Dekton® is technique

Dekton® is a high performance, multi-purpose material for the world of architecture and design.

Its strength, variety of formats, sizes and installation options make it perfect for all types of applications and construction solutions. It withstands the most demanding conditions, even in its 4 mm thickness.





# Dekton® Features

The beauty of peak performance.  
The beauty of imagining with no limits.



## Abrasion-resistant

Dekton® withstands abrasion better than granite and porcelain, making it ideal for all interior and exterior applications, including façades and flooring in busy commercial spaces.



## Scratch and impact resistant

Dekton®'s great resistance to impact and scratches makes it perfect for everyday use. Its hardness equals quartz, scoring 7/10 on the Mohs scale of mineral hardness.



## Water and stain resistant

Dekton®'s variety of thicknesses allow it to be used in applications where resistance to wind or impact are a project requirement.



## Fire resistant

Dekton® is classified A1, which certifies it as a non-combustible material capable of withstanding high temperatures without burning.



## Resistant to extreme temperatures

Its thermal conductivity, mean bending strength and low coefficient of expansion make it ideal for projects exposed to sudden changes in temperature, frost, wind or heat. In addition, it can be installed with minimal joint spacing.



## UV rays resistant

Dekton® is unaffected by ultraviolet rays. Its colour will not fade or degrade over time, maintaining the same appearance as the day it was installed in any interior or exterior application.



## Variety of sizes

Dekton® is available in both small formats of 71 x 71 cm and large formats of 320 x 144 cm, perfect for giving visual continuity to large spaces with a minimum number of joints.



## Variety of thicknesses

It is available in thicknesses of 30, 20, 12, 8 or 4 mm (Dekton® Slim). A thickness for every application, always ensuring the highest performance.



## Variety of colours and textures

Each Dekton® collection offers a myriad of colours in a wide range of finishes, from ultra-gloss to matt or velvet.



## Customisation possibilities

Dekton® offers the possibility of customising colours and complex cuts, thus creating unique pieces that result in unforgettable spaces and open up limitless design possibilities.



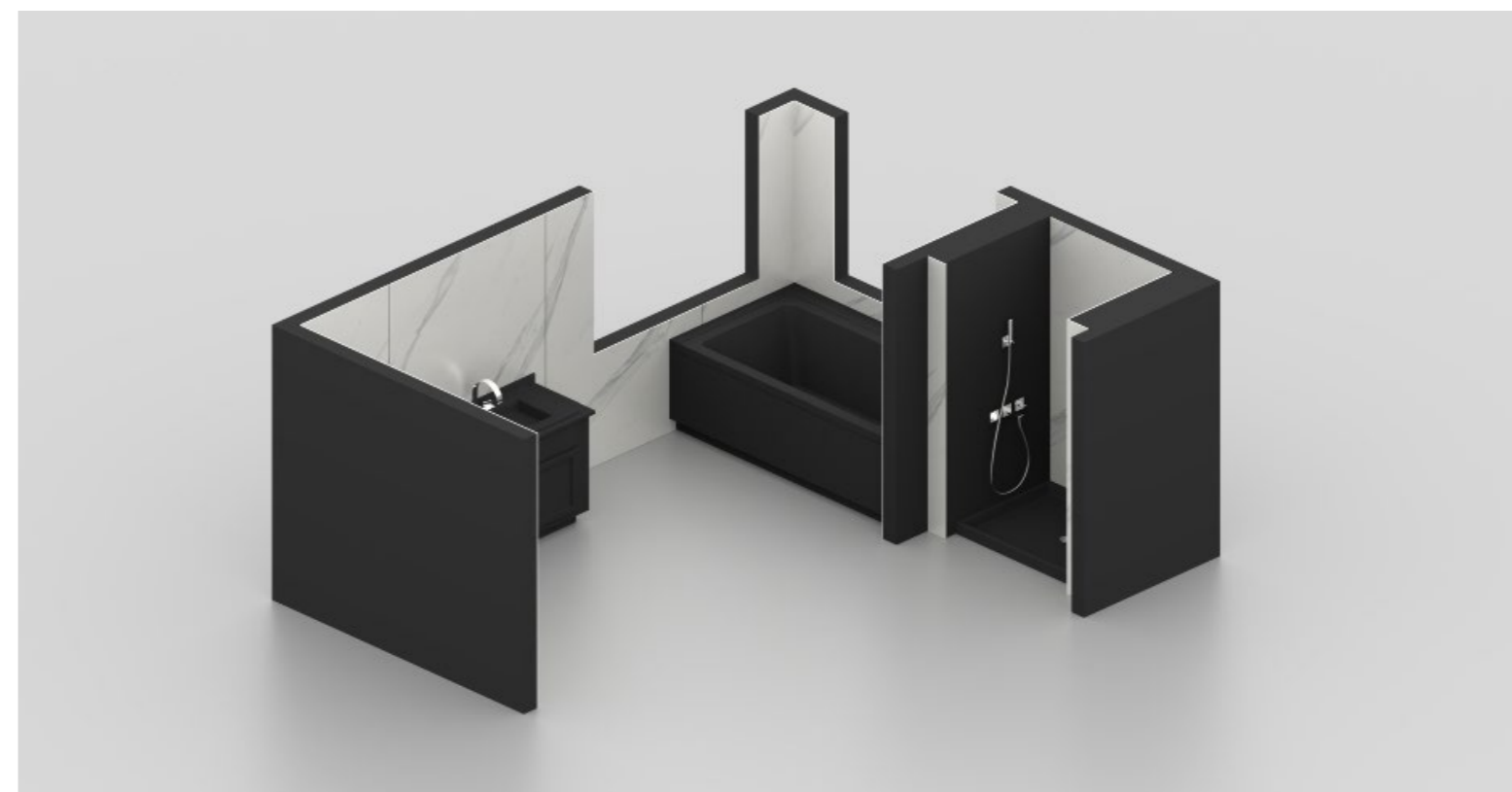
## Easy installation & cost optimisation

Lower cost and lighter weight with the Dekton® Optimma format (260 x 100 cm in 4 mm thickness), specially designed and manufactured for the most common vertical cladding applications.



## Creation of continuous spaces

Thanks to its properties, Dekton® can be installed with virtually imperceptible joints, thus ensuring colour uniformity over the entire surface and covering large spaces in a continuous and natural way.



**DEKTON® SLIM**  
Designed by COSENTINO

# Dekton® Slim 4mm

All the properties of Dekton®  
in an ultra-thin surface,  
unique in its category.

## Large format and minimum number of joints

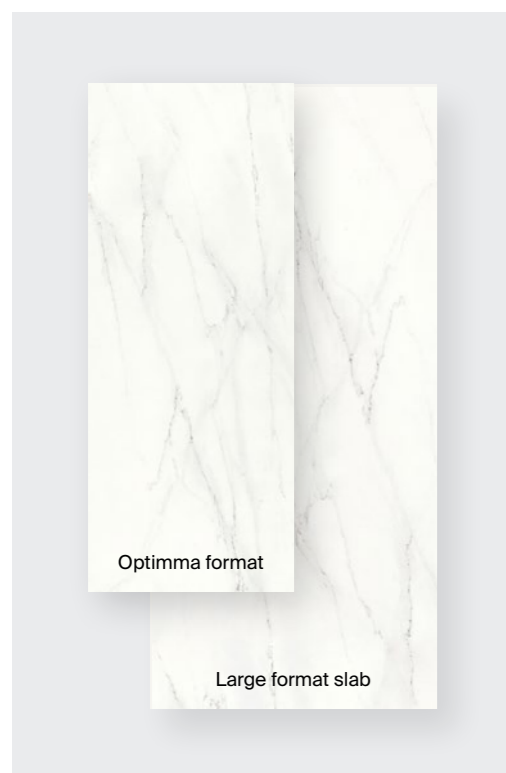
Large format,  
4 mm thick slabs offer limitless  
design possibilities and are very  
easy to install and transport.

Ideal for cladding and flooring,  
both indoors and out.

# Dekton® formats

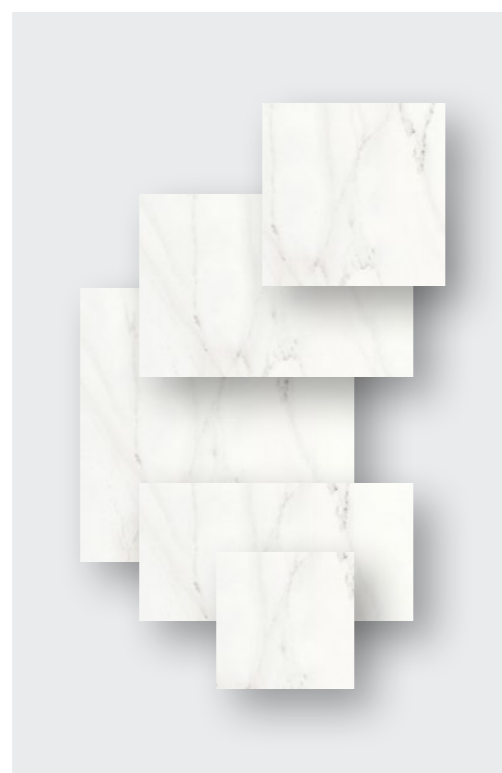
## Flexible and versatile. For any space.

Whatever the project, indoors or out, and however complex it may be, Dekton® offers a variety of thicknesses and standard formats customised to meet the functional and creative needs of architects and designers.



### Large format

Optimma format → 260 x 100 cm  
Large format slab → 320 x 144 cm



### Other format

106 x 71 cm  
142 x 106 cm  
142 x 142 cm  
142 x 71 cm  
142 x 79 cm  
159 x 142 cm  
159 x 71 cm  
71 x 71 cm  
Custom formats



### Thicknesses

4 mm (with mesh, cladding only)  
8 mm  
12 mm  
20 mm  
30 mm

# Dekton® textures

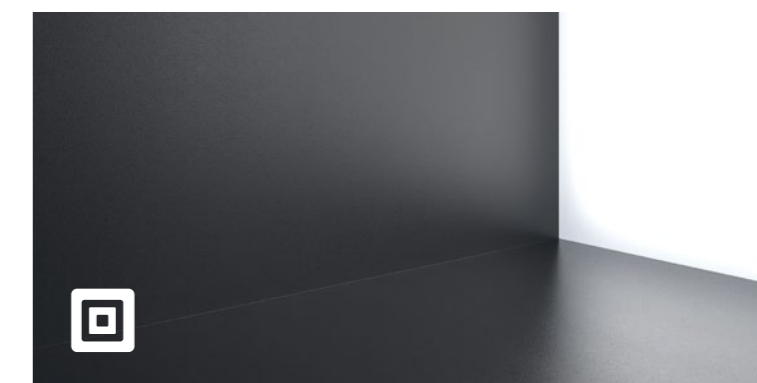
## Different material sensations. A rich variety of shades.

Dekton® comes in different textures so that the only limit is the imagination of the architect or designer: from an ultra glossy finish, to matt or velvety textured finishes.



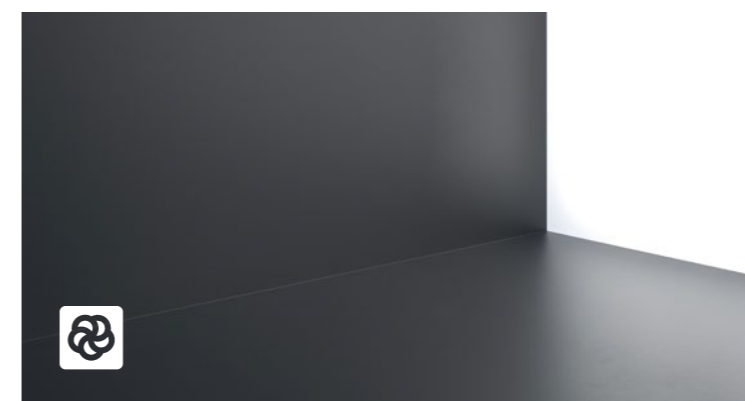
### X-Gloss

A bright, dazzling finish achieved through mechanical polishing, without the need for glazes or other materials.



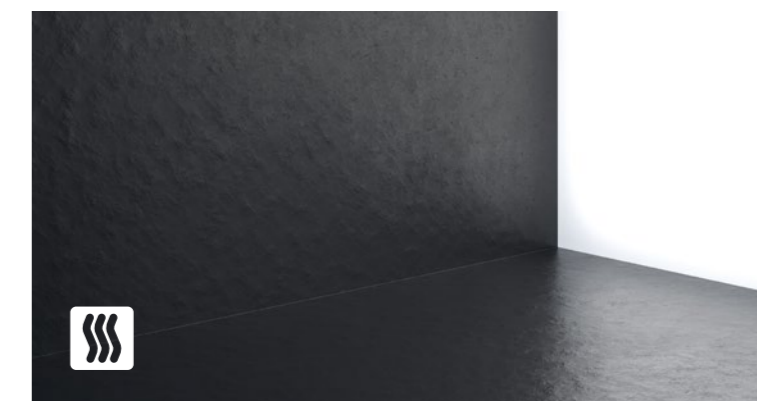
### Matt

The matt texture aims for a natural, shine-free look, ideal for a harmonious and timeless finish. Most Dekton® products come in this finish.



### Velvet

Velvet is Dekton®'s velvety texture. The materials chosen in Velvet create a feeling of warmth and comfort. This texture is perfect for classic colours, with veins.



### Matt and Textured Velvet

Matt and Textured Velvet textures combine the warmth of velvet with the roughness of a textured, imperfect material. It is perfect for emulating the finish of natural stone.

# Silestone®.

## The ultimate mineral.

### HybriQ surface

Silestone® is a hybrid surface made of minerals and recycled materials designed to bring colour and texture to interior spaces.

#### Acid and scratch resistant

Silestone® is highly resistant to scratches and impacts, as well as to external agents and acids common in everyday kitchen use.

#### Impact resistant

The high impact resistance of Silestone® allows for the handling of hard objects (pots, trays, etc.) with total peace of mind.

#### Stain resistant

Silestone® is a non-porous surface that is highly resistant to stains from coffee, wine, lemon juice, oil, vinegar, make-up and many other everyday products.

### Silestone® Advantages

Silestone® is extremely durable in kitchens, bathrooms and other spaces exposed to constant activity and use. In addition, it offers an unlimited range of colours and textures.

Silestone® has many advantages, including low maintenance, high resistance to stains and scratches, and a low fluid absorption rate. This resistance to fluids and its minimal joints make Silestone® the ideal solution for places where liquids are present. Silestone® is hard-wearing and allows prolonged use over time to last a lifetime.

The properties of Silestone® are the result of constant years of innovation that guarantee maximum hygiene and safety.



# Silestone® HybriQ+ Technology

HybriQ is a technology developed by Cosentino® consisting of an environmentally friendly manufacturing process and a renewed formula for Silestone® surfaces based on minerals and recycled materials.

More innovation

More design

More sustainable


HybriQ+ uses a minimum of 20% recycled materials, 99% recycled water and 100% renewable energy.


Same performance


Silestone® with HybriQ+ keeps all the quality, durability and warranty features that have made Silestone® the benchmark in the kitchen surface market.


This new generation maintains the high quality that characterises Silestone® surfaces.



 **99%**  
Recycled water

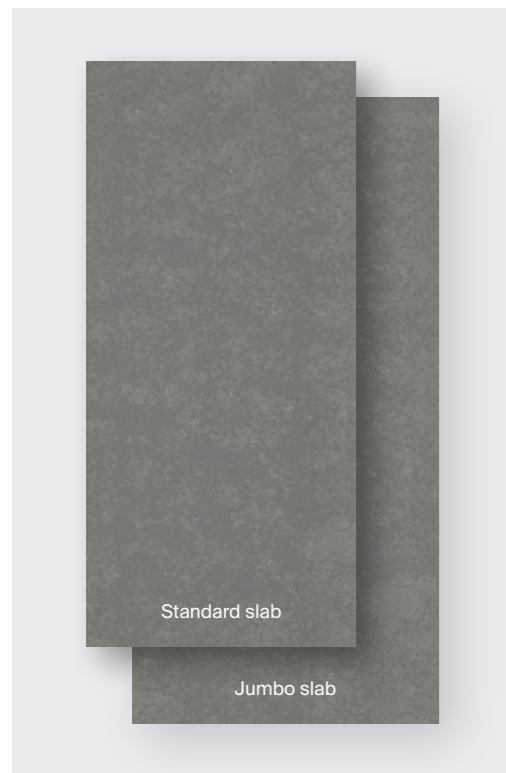
 **100%**  
Renewable energy

 **0%**  
Water discharge

 **at least 20%**  
Recycled materials

# Silestone® formats

## Multiple possibilities for indoor applications.



### Large format

Jumbo slabs – 327 x 159 cm  
Standard slabs – 306 x 140 cm

### Jumbo slabs

Cosentino® offers Silestone® slabs in Jumbo format (327 x 159 cm max.) This format allows large surfaces to be created with a minimum number of joints, design versatility and improved hygiene.

This optimises the use of the slab and minimises waste.



### Other format

30 x 30 cm  
40 x 40 cm  
60 x 60 cm  
60 x 30 cm  
60 x 40 cm  
Custom formats



### Thicknesses

12 mm  
20 mm  
30 mm  
Custom thicknesses by combining different pieces together

# Silestone® Textures.

## Surface sensory perception.

In order to adapt to all styles, Silestone® comes in different textures for any of its applications. Polished, Suede or Volcano are three possibilities that let your imagination run wild and provide your worktops, floors or walls with the texture you have always wanted.



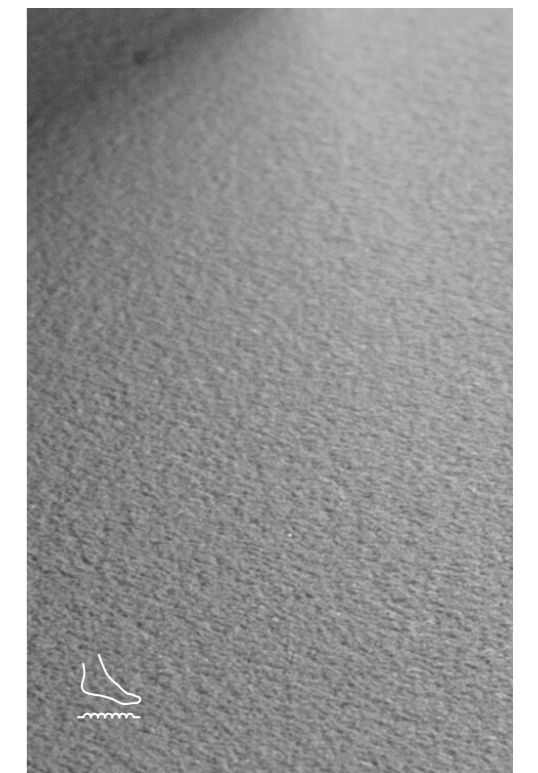
### Polished

Extremely glossy and smooth texture with an intense and consistent colour.



### Suede

A matt finish which offers a unique soft and pleasant feel.



### Soft sandblasted (Anti-slip)

Surface available exclusively in the shower tray range to guarantee maximum anti-slip safety.

# Sensa by Cosentino®

## Protected natural stone surface

Sensa by Cosentino® is a premium, maintenance-free natural stone brought to you by Cosentino®, a world leader in the natural stone industry. Sensa by Cosentino® is treated with a revolutionary stain-resistant treatment called SenGuard, and comes with a 15-year warranty against staining.

### Applications

Bathroom countertops.  
Stain-proof natural beauty

Enjoy the design, durability and resistance of natural stone without worrying about stains. Sensa by Cosentino® quartzites and granites are treated with a revolutionary stain-resistant treatment that will protect your countertop and keep it looking as good as new.

### Textures

Unique shapes  
for one-of-a-kind surfaces

The colours and textures of Sensa by Cosentino® features the patient and whimsical design of nature. Each of the available shades has a texture that produces different effects and sensations: suede, polished or caresse.

## Sensa by Cosentino® Treatment

Cosentino® applies an invisible, long-lasting treatment to quartzite and granite, which is chemically integrated into the material allowing it to breathe. This technology increases its powerful natural properties and prolongs its life.

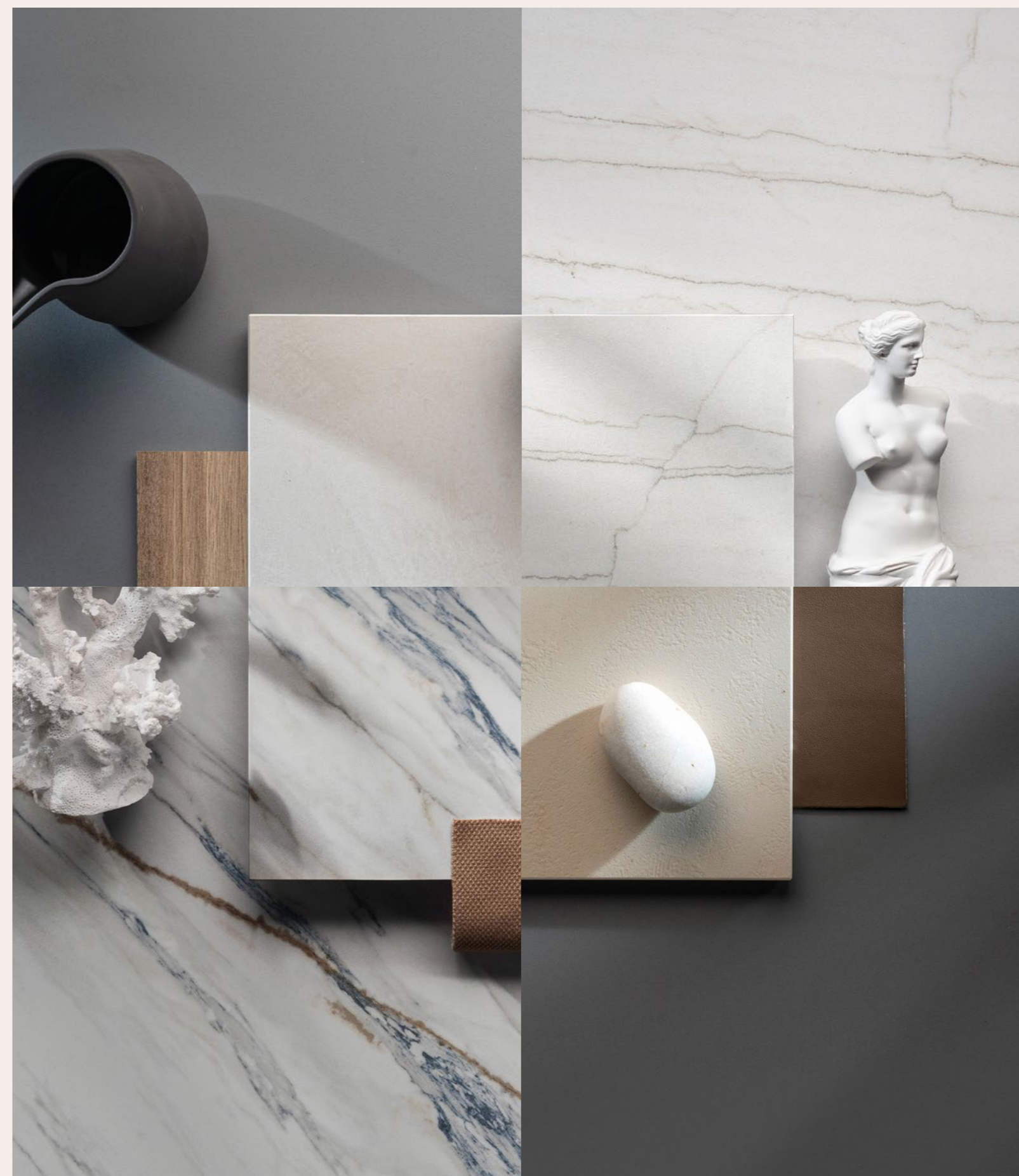
The process changes the surface tension of the stone, enabling the material itself to prevent liquids from penetrating it.



Innovative colours and textures to design spaces full of character and originality.

Silestone®, Dekton® and Sensa surfaces come in a wide variety of colours and textures: uniform, veined, etc. From classic iconic stones to new designs in solid colours, innovative patterns and textures that go beyond the visual dimension to offer a unique sensory experience.

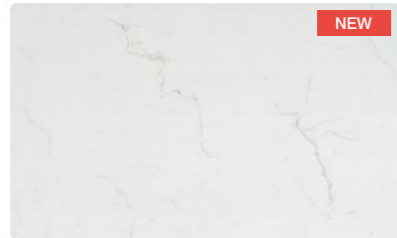
Innovation and technology in design. A range of versatile colours and textures to give character and originality to any bathroom.



# Colours



Dekton Malibu



Dekton Laguna



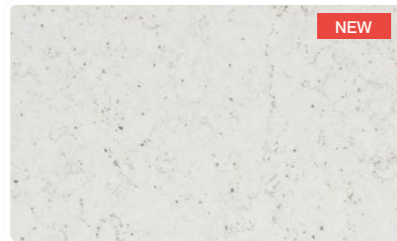
Dekton Salina



Dekton Marina



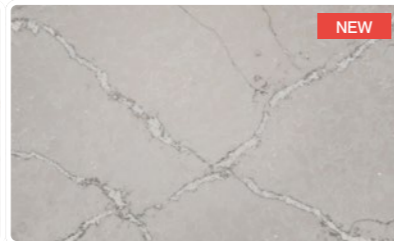
Silestone Eclectic Pearl



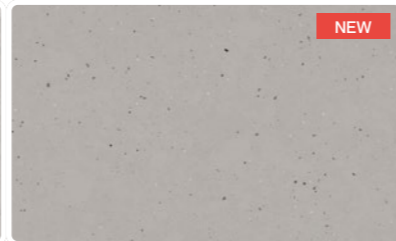
Silestone Lime Delight



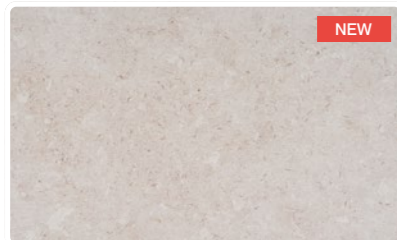
Silestone Versailles Ivory



Silestone Victorian Silver



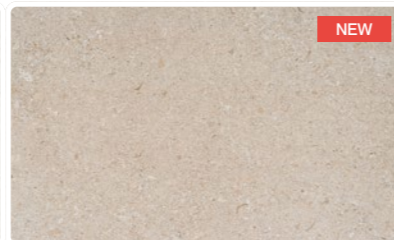
Silestone Concrete Pulse



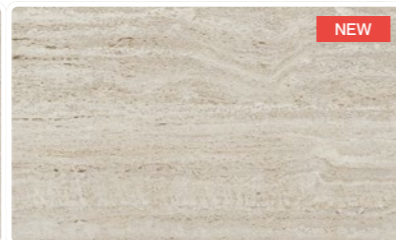
Dekton VK01 Nebbia



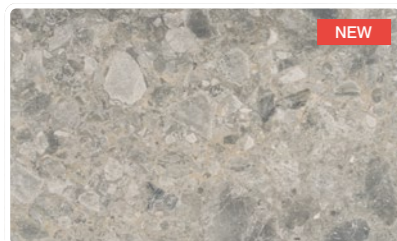
Dekton TK05 Sabbia



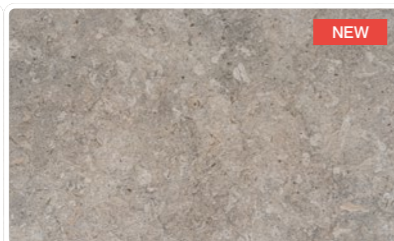
Dekton VK02 Avorio



Dekton TK06 Marmorio



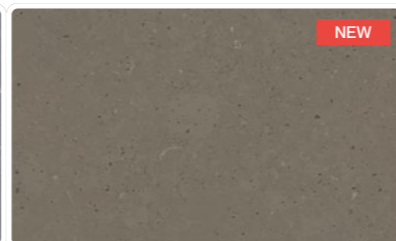
Dekton GK07 Ceppo



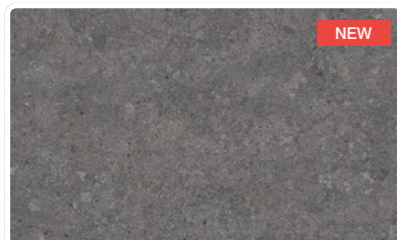
Dekton VK03 Grigio



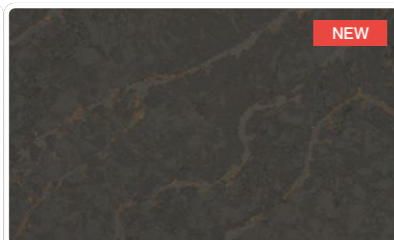
Silestone Parisien Bleu



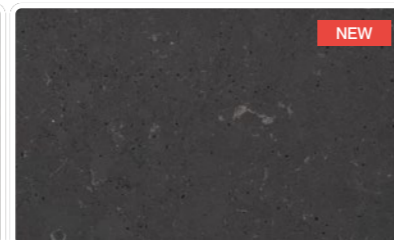
Silestone Brass Relish



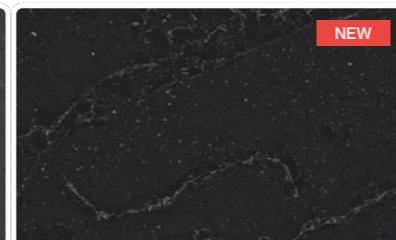
Dekton VK04 Grafite



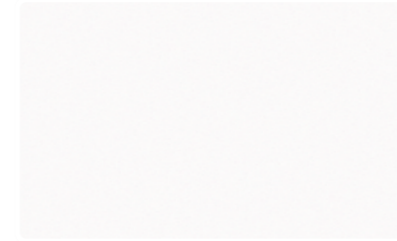
Silestone Bohemian Flame



Silestone Cinder Craze



Silestone Romantic Ash



Dekton Uyuni



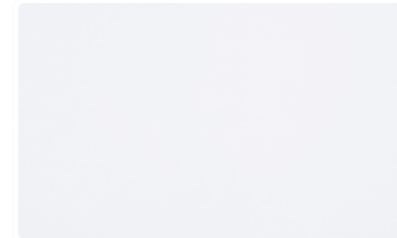
Silestone Iconic White



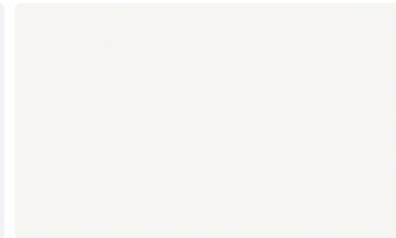
Silestone Blanco Zeus



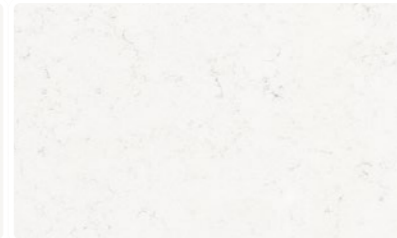
Dekton Zenith



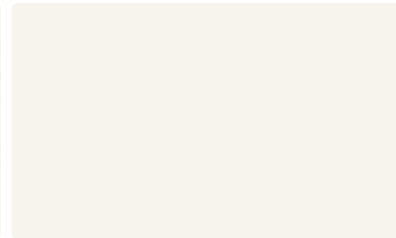
Silestone Miami White



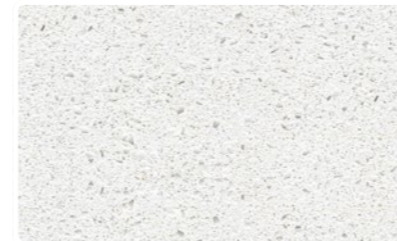
Dekton Halo



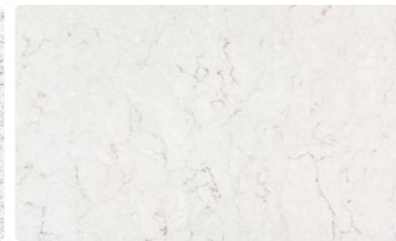
Silestone Miami Vena



Dekton Mooné



Silestone Blanco Maple 14



Silestone Snowy Ibiza



Silestone Eternal Statuario



Silestone Calacatta Gold



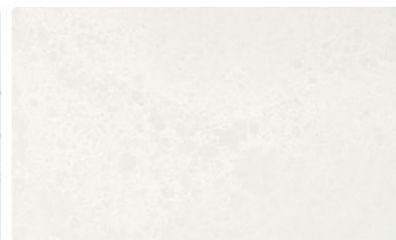
Silestone Ethereal Glow



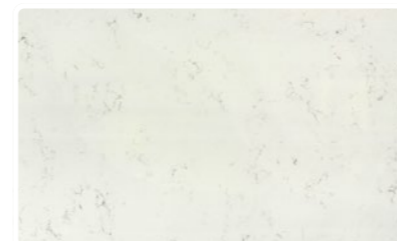
Silestone Ethereal Dusk



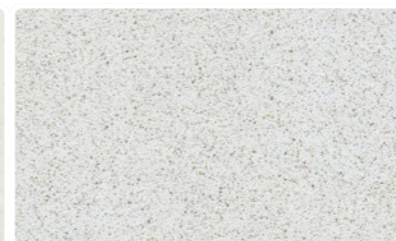
Silestone Ethereal Haze



Silestone Nolita



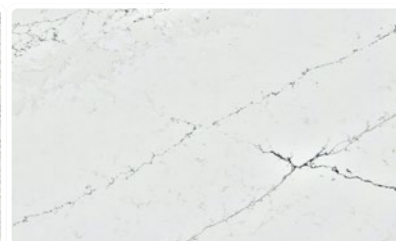
Silestone Ariel



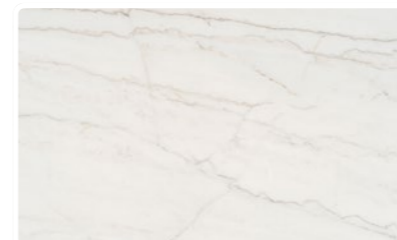
Silestone Blanco Norte 14



Silestone Blanco Stellar



Silestone Ethereal Noctis



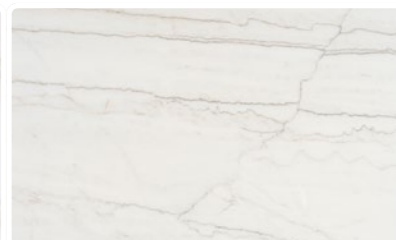
Dekton Limbo



Dekton Rem



Dekton Vigil



Dekton Neural





Silestone Pearl Jasmine \* ● Q



Dekton Aura 22 □ ◻



Dekton Opera ◻ ◻ kC



Dekton Entzo 22 □



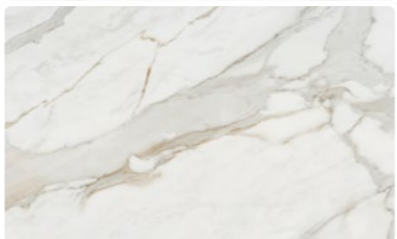
Dekton Daze ◻ ◻ kC



Dekton Natura 22 \* ◻ ◻



Dekton Olimpo \* kC



Dekton Lucid \* ◻ ◻ kC



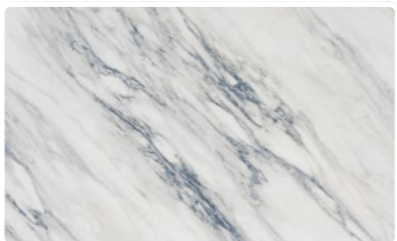
Dekton Morpheus ◻ ◻ kC



Dekton Awake \* ◻ ◻ kC



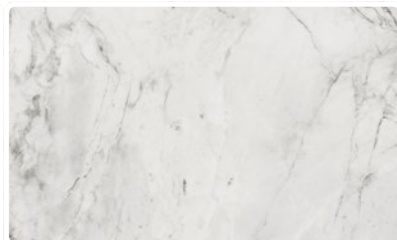
Dekton Reverie ◻ ◻ kC



Dekton Trance \* ◻ ◻ kC



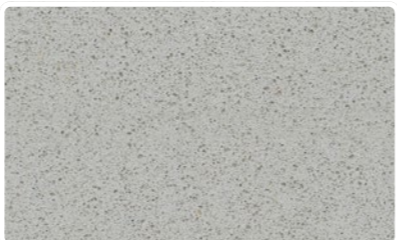
Dekton Helena 22 \* ◻ ◻



Dekton Bergen \* ◻ ◻ kC



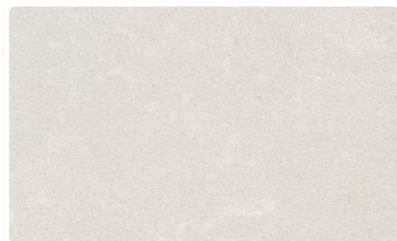
Dekton Portum ◻ kC



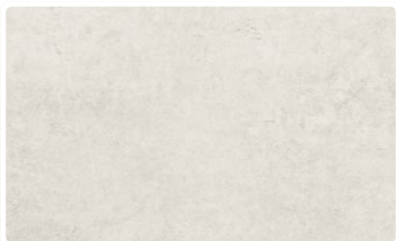
Silestone Niebla \* ● Q



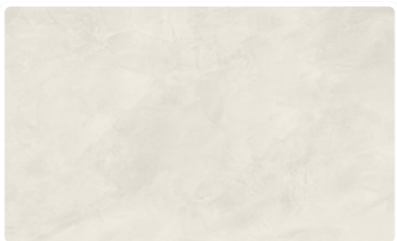
Dekton Nilium 22 □



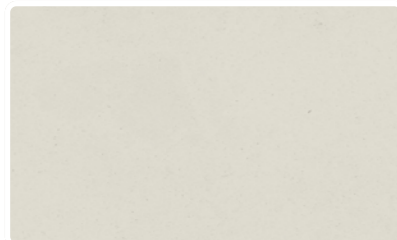
Silestone Yukon \* ● Q



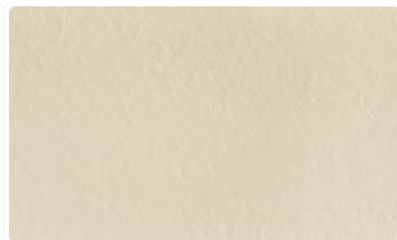
Dekton Lunar 22 ◻ ◻ ◻



Dekton Albarium 22 ◻ ◻ ◻



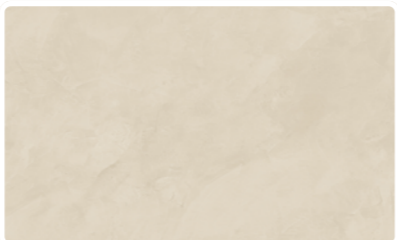
Dekton Aeris ◻ ◻ ◻



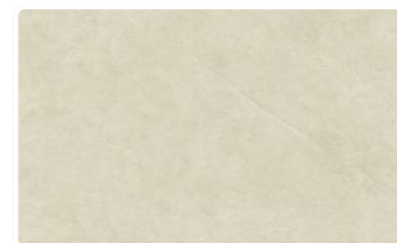
Dekton Edora ◻ ◻ ◻



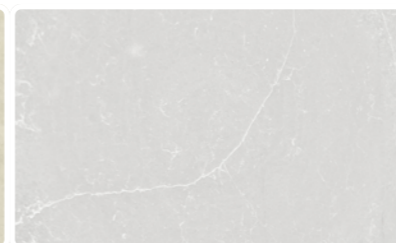
Dekton Danae ◻ ◻



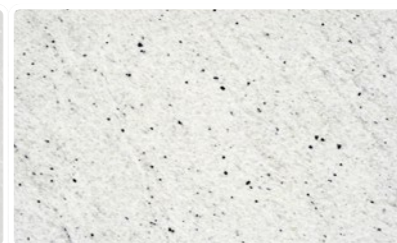
Dekton Nacre ◻ ◻ ◻



Dekton Sasea ◻ ◻ ◻



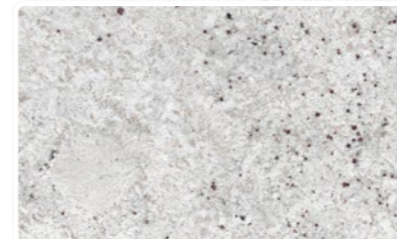
Silestone Desert Silver \* ● Q



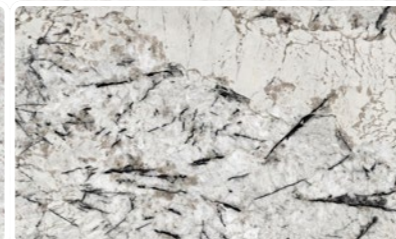
Sensa Siberia \*



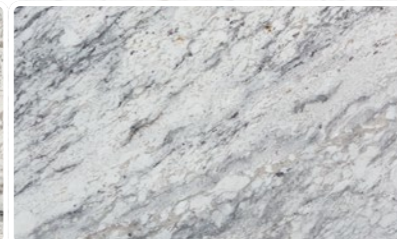
Dekton Liquid Sky 22 ◻ ◻



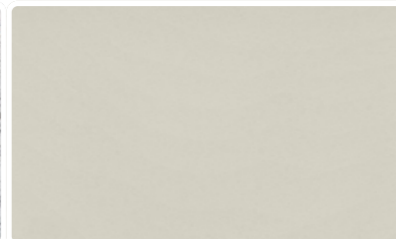
Sensa Colonial White \*



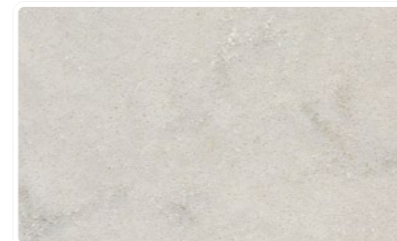
Sensa Ice Blu 19 \*



Sensa San Angelo ●



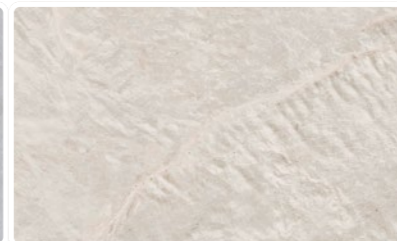
Silestone Faro White ● Q+



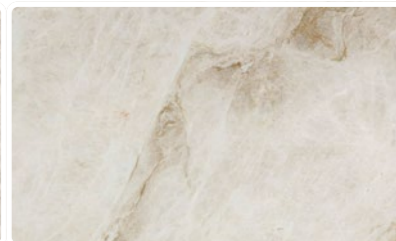
Silestone Lagoon \* ● Q



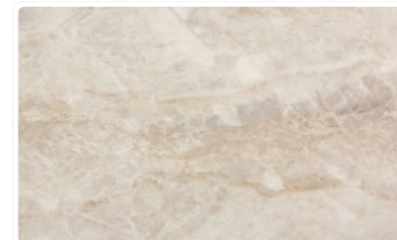
Sensa White Macaúbas \*



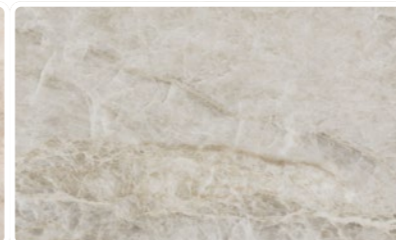
Dekton Liquid Shell 22 ◻ ◻



Sensa Taj Mahal \* ●



Dekton Arga \* ◻ ◻



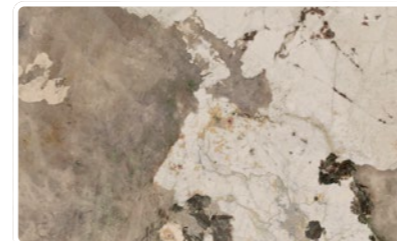
Dekton Taga \*



Dekton Argentium ◻ ◻ ◻



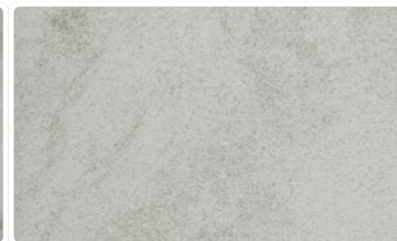
Sensa Glacial Blue \*



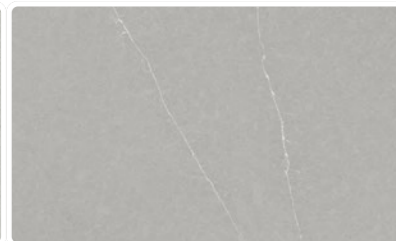
Dekton Khalo \*



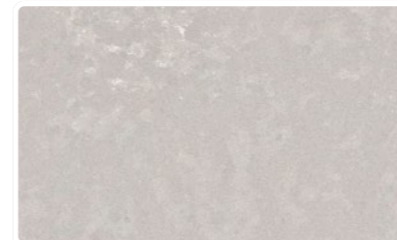
Sensa Vancouver ●



Dekton Kovik ◻ ◻



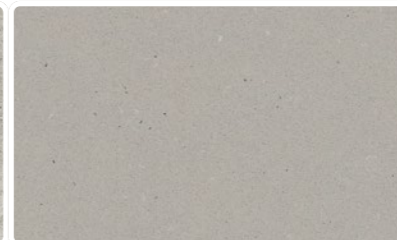
Silestone Eternal Serena \* ● Q



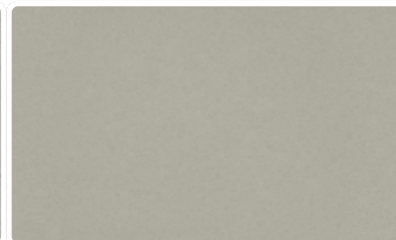
Silestone Poblenu ● Q+



Dekton Keon ◻ ◻



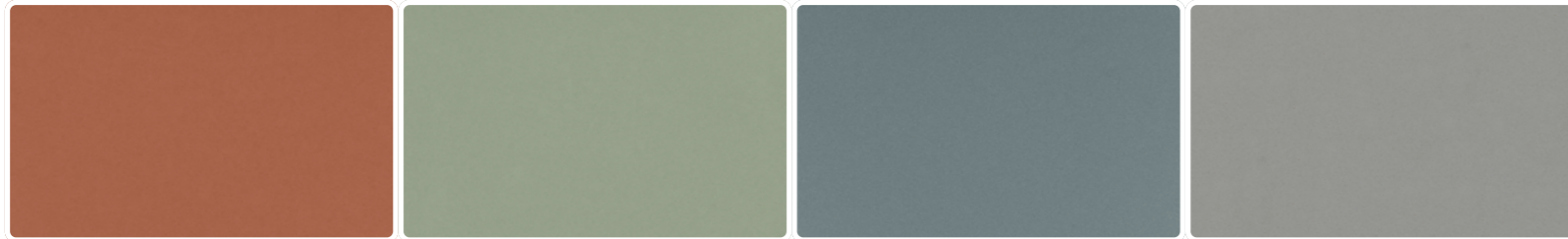
Silestone Camden ● Q



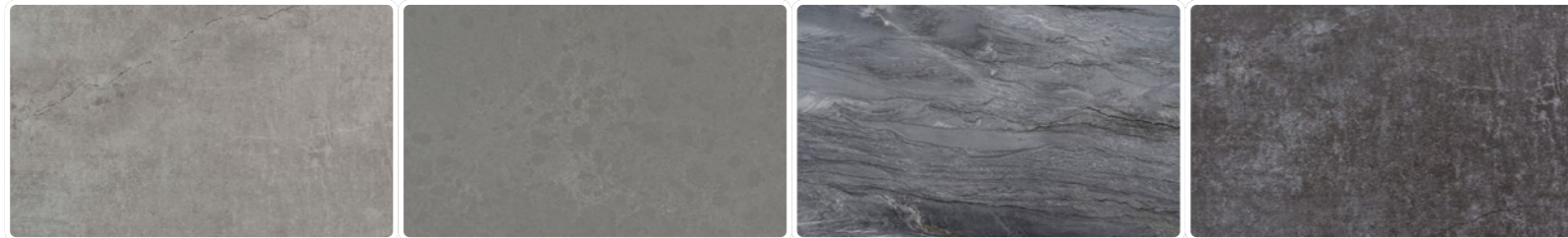
Silestone Cincel Grey ● Q+



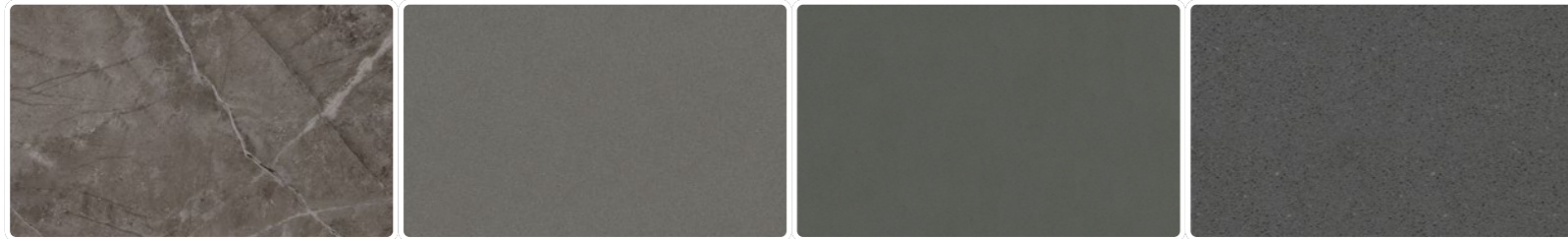
Dekton Kreta Dekton Valterra Silestone Coral Clay Dekton Umber



Silestone Arcilla Red Silestone Posidonia Green Silestone Cala Blue Silestone Kensho



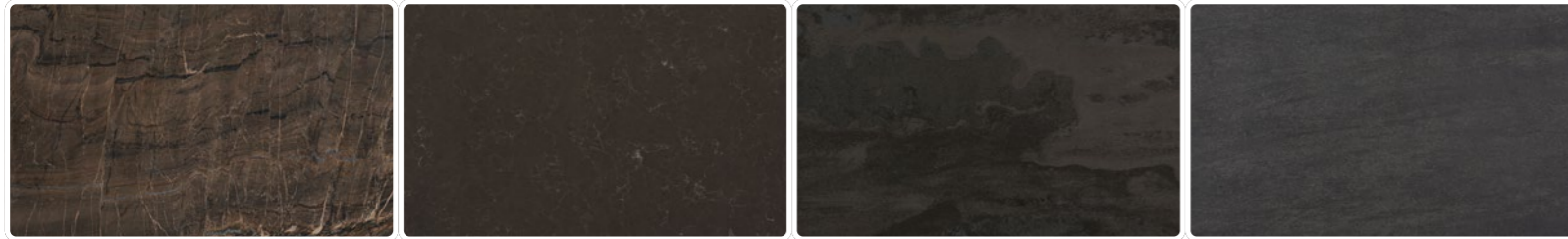
Dekton Soke Silestone Seaport Sensa Platino Dekton Laos



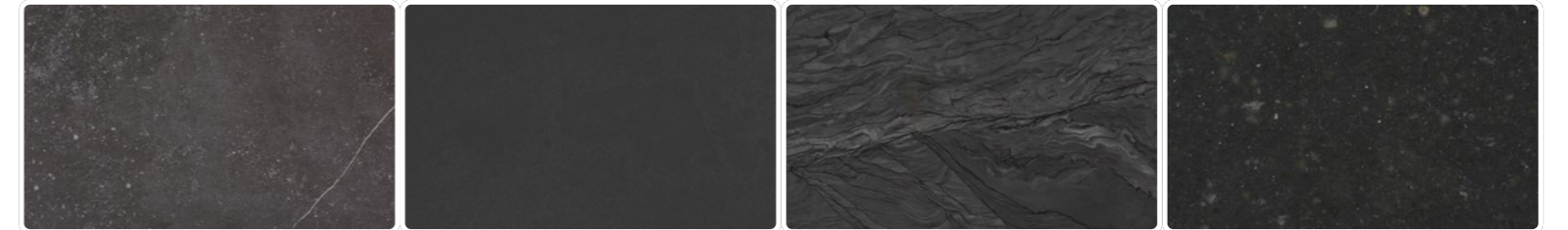
Dekton Kira Silestone Gris Expo Silestone Cemento Spa Silestone Marengo



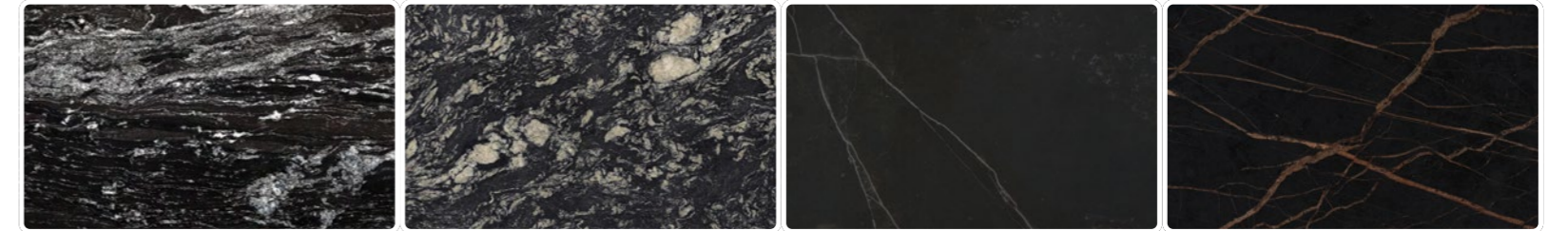
Silestone Charcoal Soapstone Dekton Micron Dekton Trilium Dekton Keranium



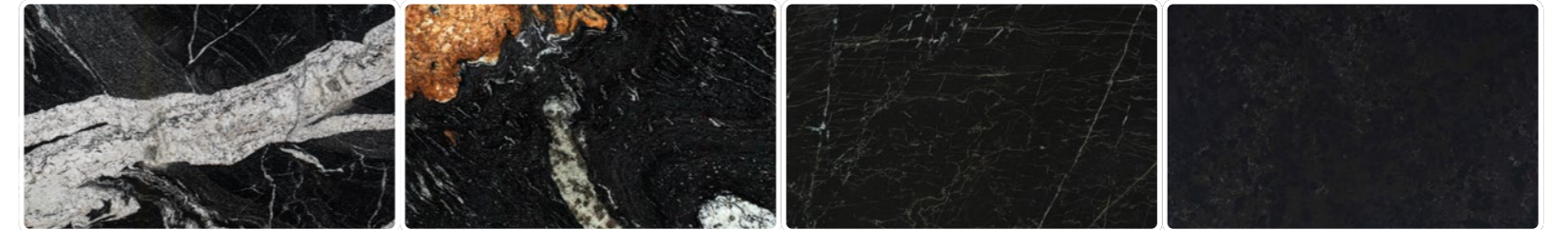
Sensa Nahoa Silestone Calypso Dekton Radium Dekton Bromo



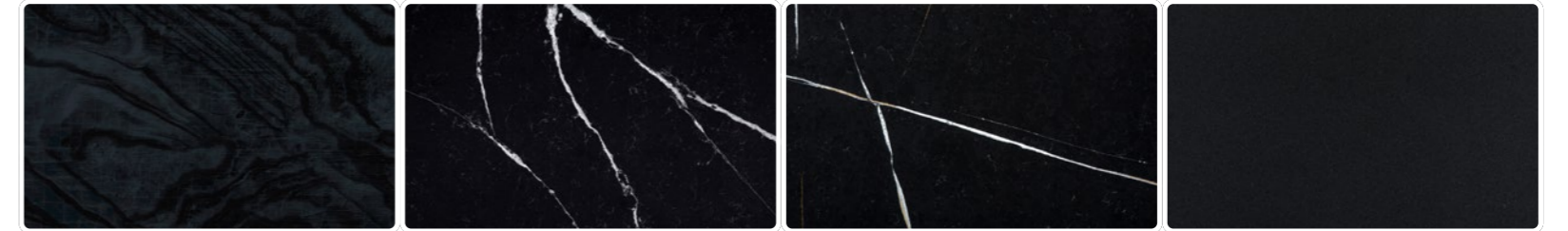
Dekton Fossil Dekton Eter Sensa Nilo Silestone Arden Blue



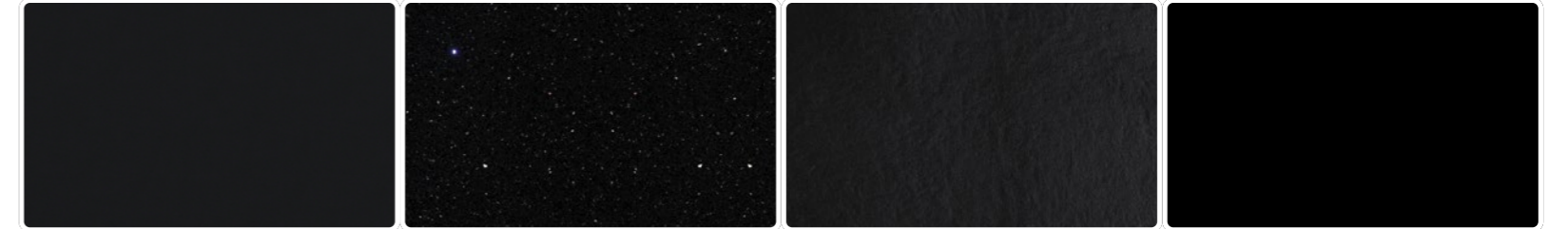
Sensa Black Beauty Sensa Indian Black Dekton Kelya Dekton Laurent



Sensa Maori Sensa Orinoco Dekton Somnia Silestone Corktown



Dekton Liquid Embers Silestone Eternal Marquina Silestone Eternal Noir Sensa Moak Black



Silestone Negro Tebas Silestone Negro Stellar Dekton Sirius Dekton Domoos

DEKTON® Polished (X-Gloss) Matt (Ultra-Matt) Matt (Velvet) Textured (Ultra-Texture) Dekton® Slim 4 mm  
 Quick Cut Technology Dekton® Grip/Grip+. Anti-slip solution for wet surfaces. \* Colour only available for shower trays

SILESTONE® Polished Matt (Suede) Integrity Technology HybriQ Technology HybriQ+ Technology

SENSA BY COSENTINO® Polished (Mirage) Matt (Leather) Textured (Caresse)

→ Marie sinks, countertop and cladding Silestone® Posidonia Green



→ Marie Top sinks Silestone® Blanco Zeus / Countertop, flooring and cladding Silestone® Cala Blue



# Flooring & Cladding

## Visual continuity throughout the space

The same surface is used to clad floors, walls and furniture. Thanks to its large format and almost zero thermal expansion coefficient, it can be installed with fewer, practically imperceptible joints.



# Design and patterns

Three groups of patterns that make the design process easier.

We have classified our Dekton® colour range into three different clusters of patterns to facilitate the design process. All our portfolio is labelled as Infinite Pattern, Singular Pattern or Smooth Pattern, depending on the desired effect for large surfaces and the placement of slabs adjacent to one another, taking into account the orientation of the design, shades and variations.

However, this classification is merely indicative, and we recommend that you contact our Product department to obtain an individual assessment that guarantees how you can materialise your project the way you imagined.



## Singular Pattern

Designs with colour ranges of greater complexity and a very strong orientation, which result in patterns with a lot of character and variation in smaller cuts or continuous layouts.



## Smooth Pattern

Designs with an orientation in the graphic structure that has to be taken into account when cutting and placing the slabs. It is a very versatile type of pattern that requires consideration of orientation in its installation.



## Infinite Pattern

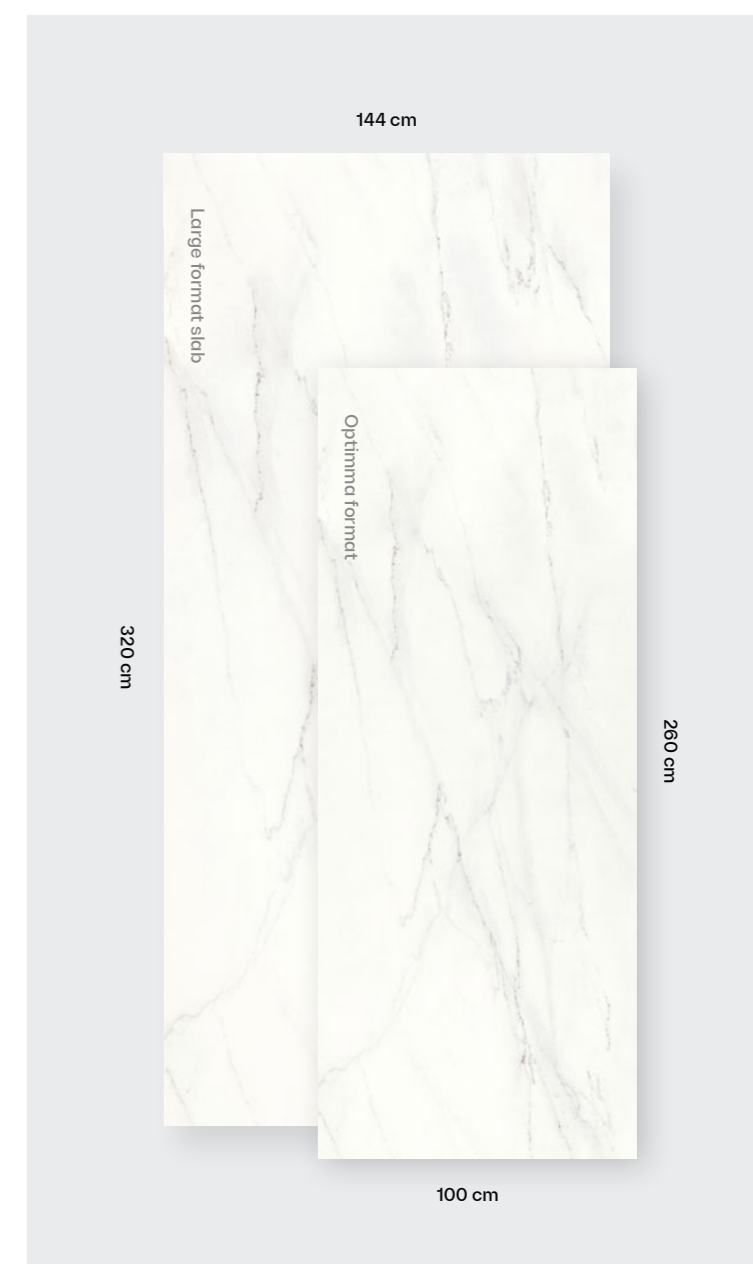
Uniform colours or designs with a consistent or almost consistent composition and structure that, when used for cladding such as floors, walls or façades, allow for random placement of slabs, providing a beautifully consistent look.

# Optimma format

A Dekton® format optimised for maximum efficiency in the most common applications.

Our Dekton® slabs have been optimised for the most common applications to create a new format with improved cost, design, installation and handling.

**260 x 100 cm in 4 mm thickness.**



## Rotating Pattern

All colours have a rotating pattern, except Rem and Kelya, these have a static pattern.

With rotating pattern the graph is printed with a slight vertical displacement upwards (scroll up) in each one of its iterations (in each slab).

In the static pattern the graph is always printed in the same position, but there is the option that, when position the slabs next to each other horizontally, the one immediately after it rotates 180° with respect to the above, as shown in the following illustration, in order to play with the movement in the design.



# Dekton® Book Match

## Book Match

Based on some of our designs, we have created unique, symmetrical and interchangeable references that allow compositions and designs to be made where the veins have continuity between different pieces.

Each piece has a unique combination of numbers and letters to select the patterns that best suit your needs according to colour and available thicknesses.

Material on request, check availability.

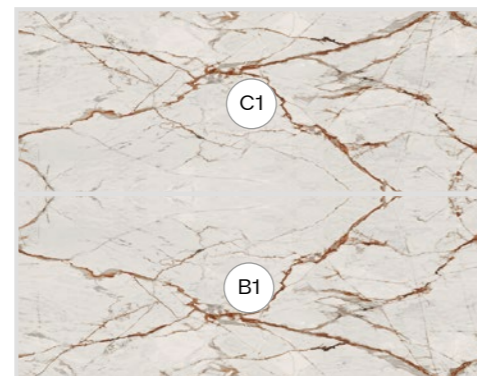
**Dekton® Slim Aura 15**  
Available in 4, 8, 12 and 20 mm thicknesses



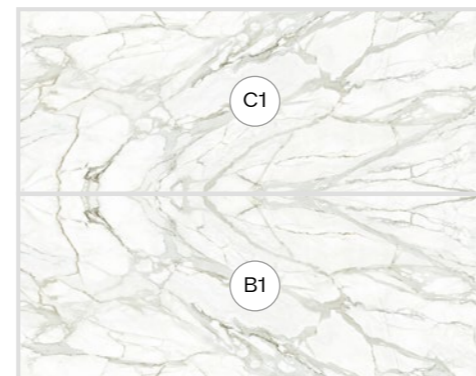
**Dekton® Natura 22**  
Available in 4, 8, 12 and 20 mm thicknesses



**Dekton® Awake**  
Available in 4, 8 and 12 mm thicknesses



**Dekton® Lucid y Morpheus**  
Available in 8, 12 mm and Optimma format

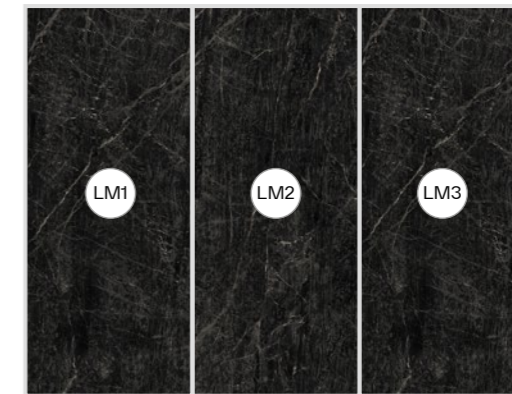


# Dekton® Lineal Match y Book Match

## Lineal Match

We present a new concept that includes references of the same colour to create a fluid and continuous atmosphere. Focused on large-area flooring and vertical cladding applications.

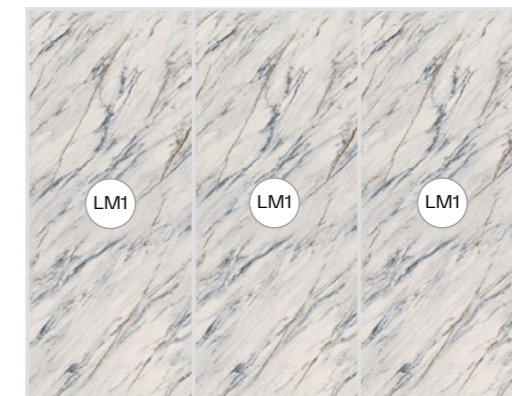
**Dekton® Somnia**  
Available in 4, 8, 12 mm and Optimma format



## Design Match

A new design conceived to position the slabs vertically. The slab is rotated 180° in each of its iterations, thus creating a continuous and harmonious design.

**Dekton® Trance**  
Available in 4, 8 and 12 mm thicknesses





# Dekton® Grip & Grip+

Improved grip for any anti-slip application such as bathrooms, swimming pools or outdoor floors.

Each space has different technical needs. We launch to the market a new portfolio for antislip flooring in two finishes Grip and Grip+

Grip, the anti-slip finish that is easy to clean and ideal for light colours.

Grip+, the maximum grip for the most demanding applications and maximum ease of cleaning.

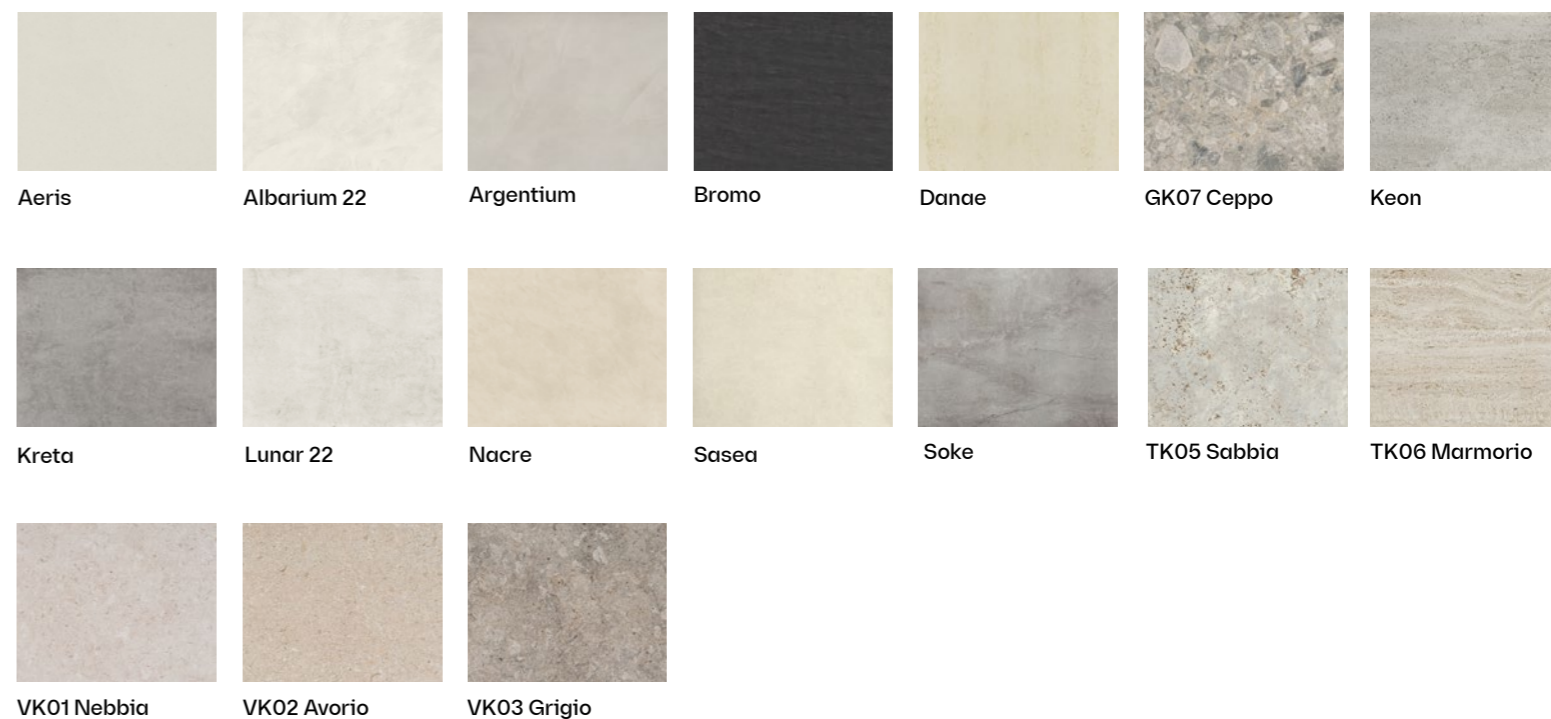
Two highly durable and resistant anti-slip treatments, applied in a controlled manner during the manufacturing process of Dekton®, without the need for chemical or mechanical means.

Colours with the anti-slip finish may have slight colour differences compared to the standard matt finish, which are more evident in colours such as Sasea or Danae.

## Dekton® Grip colours



## Dekton® Grip+ colours



# Washbasins & Shower trays

Durability and beauty in timeless features that can fit any space or become an iconic part of the bathroom.

Washbasins, countertops and shower trays designed with the most cutting-edge materials developed by Cosentino®. Maximum durability guaranteed in the main features of the bathroom with an upmarket and timeless design that suits any space, bringing unique bathrooms to life.

Bathroom features that give a personal touch with simplicity, elegance and sophistication to any decorative style.





# Washbasins & countertops

Versatile and durable designs.

Countertops and washbasins to suit any space with a wide variety of designs in which geometric balance and sobriety predominate. The durability of a timeless aesthetic and the hardness and resistance offered by Cosentino®'s latest generation materials: Silestone® and Dekton®.



5  
YEAR  
COSENTINO  
WARRANTY

# Washbasins & countertops

## Full product range

Designer washbasins and countertops suitable for any space.



**Evita**  
Silestone® Integrity P. 196



**Simplicity**  
Silestone® · Dekton® P. 206



**Reflection**  
Silestone® · Dekton® P. 208



**Marie**  
Silestone® Integrity P. 198



**Elegance**  
Silestone® P. 200



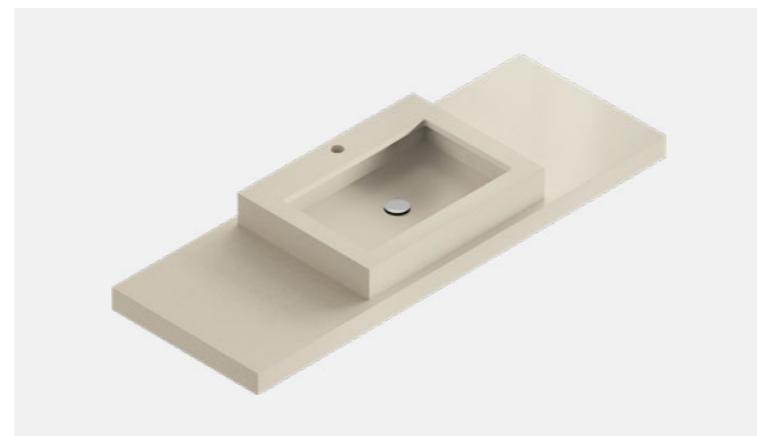
**Silence**  
Silestone® · Dekton® P. 210



**HLine Flex**  
Silestone® · Dekton® P. 212



**Armony**  
Silestone® P. 202



**Symmetry**  
Silestone® P. 204



**HLine Urban**  
Silestone® · Dekton® P. 214



**HLine Bath Top**  
Silestone® · Dekton® P. 216

# Evita

## Integrity



Three sizes of Integrity washbasins with a round and functional design, which combine technology and integration, offering comfort for the most demanding solutions.



Evita S



Evita Q



Evita L

### Characteristics

1. Moulded basin featuring Integrity® technology, without joints, with reduced height and rounded wall corners.
2. Optional overflow.
3. Additional basins can be supplied and fitted.
4. Custom options for countertop as: towel rails, cut outs, side legs (non structural), skirt heights, etc.
5. Click-clack valve included.
6. Support bars included (for countertops with skirt).

### Tap

With or without drill holes for taps

### Overflow

With or without overflow

### Integrated basin

Standard S: 50 x 30 x 10 cm  
Standard L: 65 x 30 x 10 cm  
Standard Q: 51 x 41 x 10 cm

### Edging

12 mm straight edge  
Skirt: 125 mm

### Countertop

Length from 60 to 320\* cm  
Width from 40 to 60 cm

\* Jumbo slab only. For the maximum length, continuity of veins in the side skirts is not possible.

### Available colours

Available in a selected range of Silestone® 12 mm colours polished. Please scan the below QR code to check the latest portfolio of Silestone® Integrity colours.



# Marie

## Integrity



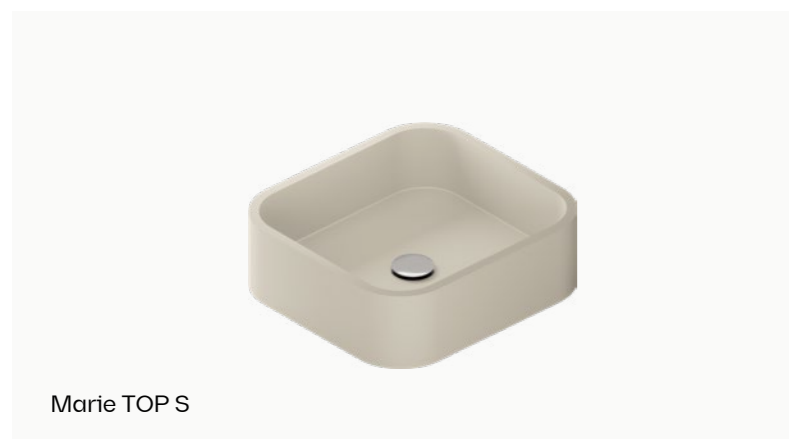
The Integrity washbasin is available in two different formats, on top of or integrated into the countertop, and two different sizes. Their soft corners and wide variety of finishes are perfect for all bathroom styles.



Marie S



Marie L



Marie TOP S



Marie TOP L

### Characteristics

1. Moulded basin featuring Integrity technology, without joints, with reduced height and rounded wall corners.
2. TOP countertop washbasins models in exclusive matt finish.
3. Additional basins can be supplied and fitted.
4. Custom options for countertop as: towel rails, cut outs, side legs (non structural), skirt heights, etc.
5. Click-clack valve included.
6. Support bars included (for countertops with skirt).

### Tap

With or without drill holes for taps

### Integrated basin

Standard S: 34 x 37 x 7 cm  
Standard L: 51 x 37 x 7 cm

### TOP basin

Standard S: 34 x 37 x 10 cm  
Standard L: 51 x 37 x 10 cm

### Edging

20 mm straight edge  
Skirt: 125 mm (integrated) / 10 mm (TOP)

### Countertop

Length from 47 to 320\* cm  
Width from 44 to 60 cm

\* Jumbo slab only. For the maximum length, continuity of veins in the side skirts is not possible.

### Available colours

Available in a selected range of Silestone® 20 mm colours Polished or Suede (TOP version in Matt). Please scan the below QR code to check the latest portfolio of Silestone® Integrity colours.



# Elegance



Elegance is our well known washbasin made of CTS pieces. Customise your washbasin to get that elegant uniform design you are looking for.



## Characteristics

1. Traditional rectangular basin featuring a functional design.
2. Optional overflow.
3. Additional basins can be supplied and fitted.
4. Custom options for countertop as: towel rails, cut outs, side legs (non structural), skirt heights, etc.
5. Click-clack valve included.
6. Support bars included (for countertops with skirt).

## Tap

With or without drill holes for taps

## Overflow

With or without overflow

## Integrated basin

Standard: 49 x 30 x 10 cm  
Other sizes available for +20 pcs

## Edging

20 mm straight edge  
Skirt: 125 mm

## Countertop

Length from 59 to 320\* cm  
Width from 40 to 60 cm

\* Jumbo slab only. For the maximum length, continuity of veins in the side skirts is not possible.

## Available colours

Available in all Silestone® 20 mm colours, polished or suede. Please scan the below QR code to check the latest portfolio of Silestone® colours



# Armony



The evolution of tradition turns this washbasin into the ideal touch for a distinctive bathroom, providing the harmony that the room needs.



## Characteristics

1. Removable ramp for easy cleaning.
2. Additional basins can be supplied and fitted.
3. Custom options for countertop as: towel rails, cut outs, side legs (non structural), skirt heights, etc.
4. Suction cup to lift the ramp included.
5. Grid sink plug valve included (cannot be closed).
6. Support bars included (for countertops with skirt).

## Tap

With or without drill holes for taps

## Integrated basin

Standard: 49 x 30 x 10 cm  
Other sizes available for +20 pcs

## Edging

20 mm straight edge  
Skirt: 160 mm

## Countertop

Length from 59 to 320\* cm  
Width from 40 to 60 cm

\* Jumbo slab only. For the maximum length, continuity of veins in the side skirts is not possible.

## Available colours

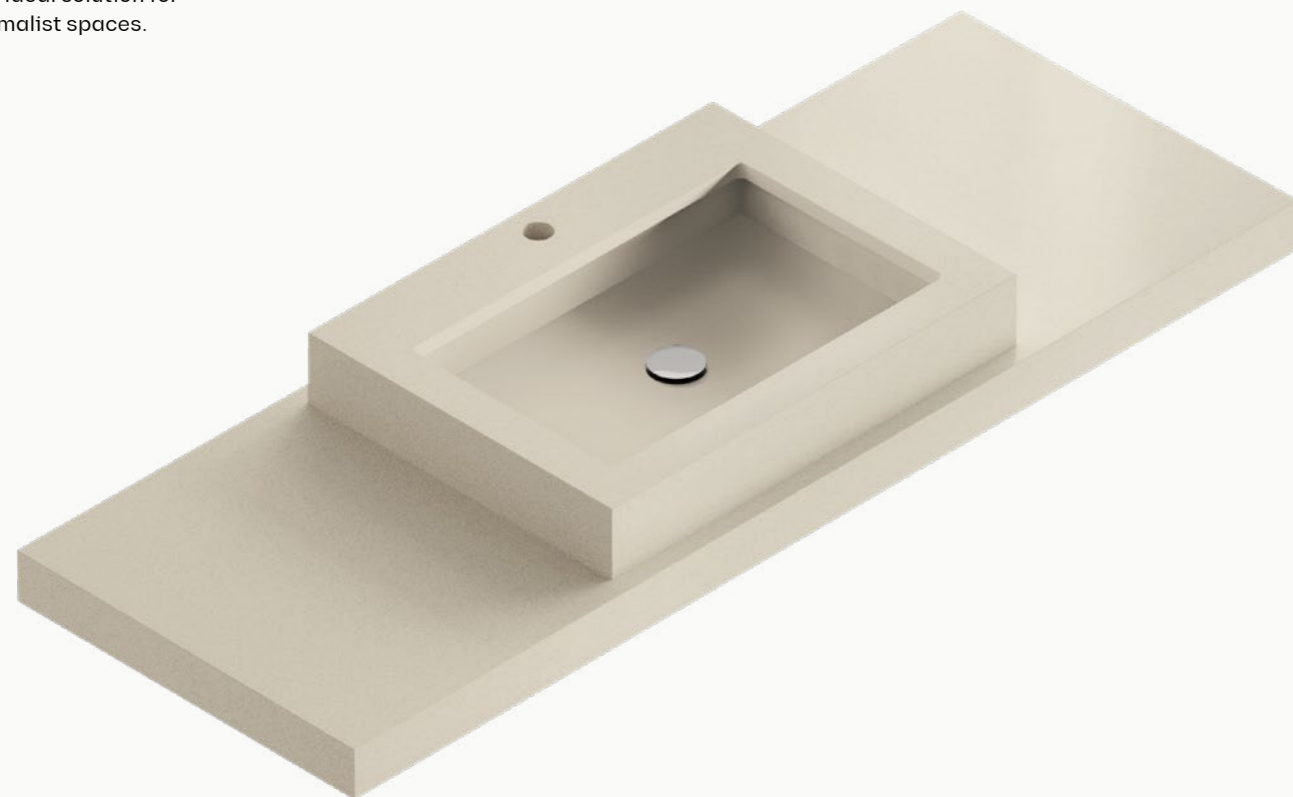
Available in all Silestone® 20 mm colours, polished or suede. Please scan the below QR code to check the latest portfolio of Silestone® colours



# Symmetry



Innovative washbasin design with straight lines and reduced height, available in three different sizes, to provide the ideal solution for the most minimalist spaces.



## Characteristics

1. Countertop washbasin suitable for countertops made of any material.
2. Three sizes of basins to suit every need and every bathroom space.
3. Custom options for countertop as: towel rails, cut outs, side legs (non structural), skirt heights, etc.
4. Click-clack valve included.
5. Support bars included (for countertops with skirt).

## Tap

With or without drill holes for taps

## Under countertop basin

Standard S: 33 x 23 x 7 cm  
(ext. 45 x 38 x 10 cm)

Standard M: 38 x 25 x 7 cm  
(ext. 50 x 40 x 10 cm)

Standard L: 58 x 30 x 7 cm  
(ext. 70 x 45 x 10 cm)

Other sizes available for +20 pcs

## Edging

20 mm straight edge / Skirt: 100 mm

## Countertop

Length from 55 to 320\* cm  
Width from 43 to 60 cm

\* Jumbo slab only. For the maximum length, continuity of veins in the side skirts is not possible.

## Available colours

Available in all Silestone® 20 mm colours, polished or suede. Please scan the below QR code to check the latest portfolio of Silestone® colours



# Simplicity



A washbasin with a minimalist but practical design. Its modern and elegant lines make it a simple but smart choice for your bathroom.



## Characteristics

1. Removable cover for easy cleaning.
2. Fixed ramp with splash-proof slope.
3. Additional basins can be supplied and fitted.
4. Custom options for countertop as: towel rails, cut outs, side legs (non structural), skirt heights, etc.
5. Suction cup to lift the cover included.
6. Grid sink plug valve included (cannot be closed).
7. Support bars included (for countertops with skirt).

## Tap

With or without drill holes for taps

## Under countertop basin

Standard: 49 x 30 x 10 cm  
Other sizes available for +20 pcs

## Edging

20 mm straight edge for Silestone®  
12 mm straight edge for Dekton®  
Skirt: 160 mm

## Countertop

Length from 59 to 320\* cm  
Width from 44 to 60 cm

\* Jumbo slab only for Silestone®. For the maximum length, continuity of veins in the side skirts is not possible.

## Available colours

Available in all Silestone® 20 mm colours, polished or suede and Dekton® 12 mm colours. Please scan the below QR code to check the latest portfolio of Silestone® and Dekton® colours





# Reflection



Innovative and versatile washbasin, with double drainage. Its innovative design, featuring straight lines, and its range of sizes provide the bespoke solution to adapt your style in the bathroom



## Characteristics

1. Removable cover for easy cleaning.
2. Double drainage slope, perfect for two taps.
3. Additional basins can be supplied and fitted.
4. Custom options for countertop as: towel rails, cut outs, side legs (non structural), skirt heights, etc.
5. Suction cup to lift the cover included.
6. Grid sink plug valve included (cannot be closed).
7. Support bars included (for countertops with skirt).

## Tap

With or without drill holes for taps

## Integrated basin

Standard S: 49 x 30 x 8 cm  
Standard M: 90 x 30 x 8 cm  
Standard L: 120 x 30 x 8 cm  
Other sizes available for +20 pcs

## Edging

20 cm straight edge for Silestone®  
12 mm straight edge for Dekton®  
Skirt: 125 mm / 160 mm

## Countertop

Length from 59 to 320\* cm  
Width from 40 to 60 cm

\* Jumbo slab only for Silestone®. For the maximum length, continuity of veins in the side skirts is not possible.

## Available colours

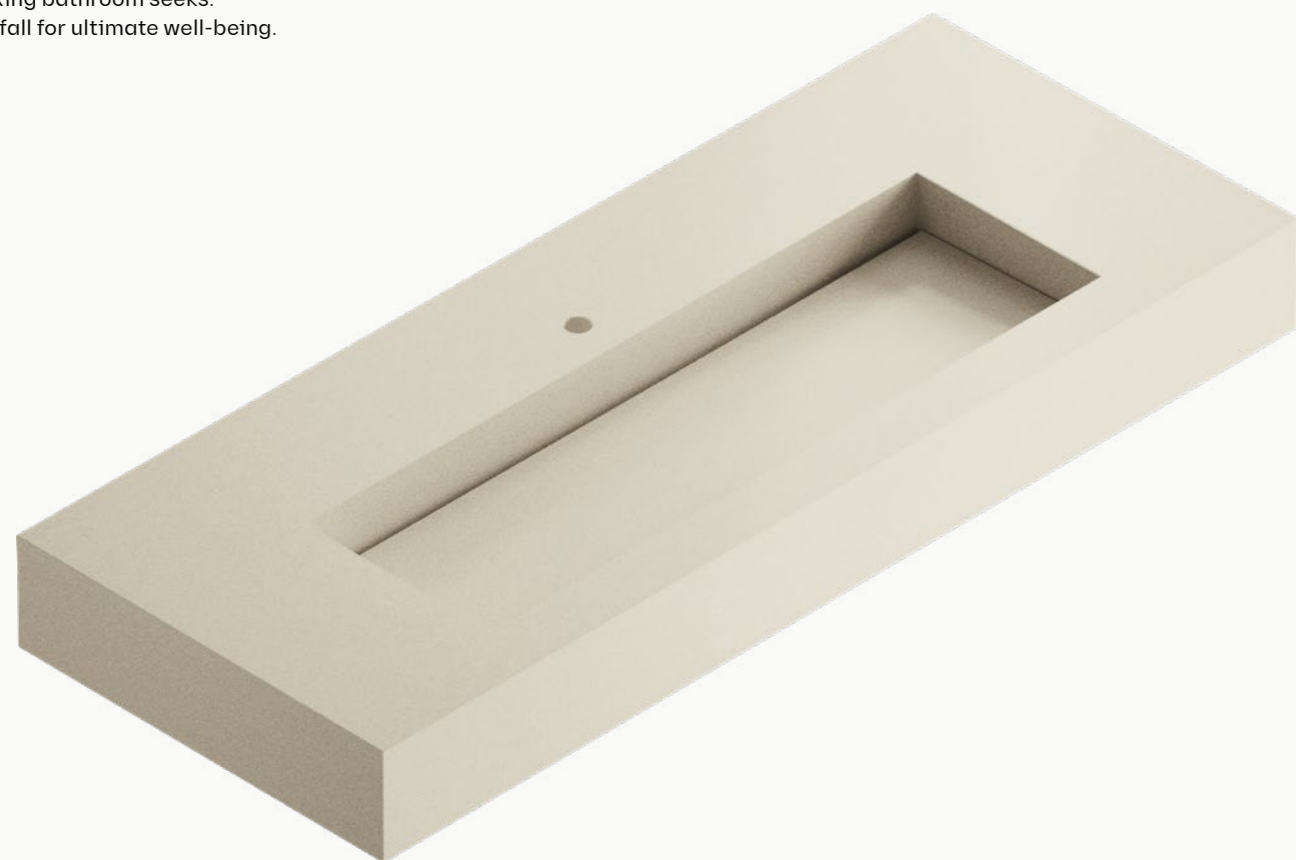
Available in all Silestone® 20 mm colours, polished or suede and Dekton® 12 mm colours. Please scan the below QR code to check the latest portfolio of Silestone® and Dekton® colours



# Silence



Washbasin with a design that provides both the warmth and tranquillity that the most relaxing bathroom seeks. A silent waterfall for ultimate well-being.



## Characteristics

1. Linear drainage (not accessible for cleaning)
2. Almost imperceptible drainage slope.
3. Additional basins can be supplied and fitted.
4. Custom options for countertop as: towel rails, cut outs, side legs (non structural), skirt heights, etc.
5. Grid sink plug valve included (cannot be closed).
6. Support bars included (for countertops with skirt).
7. Possibility of bespoke basin solutions for +20 pcs.

## Tap

With or without drill holes for taps

## Integrated basin

Standard S: 49 x 30 x 8 cm  
Standard M: 90 x 30 x 8 cm  
Standard L: 120 x 30 x 8 cm  
Other sizes available for +20 pcs

## Edging

20 mm straight edge for Silestone®  
12 mm straight edge for Dekton®  
Skirt: 125 mm / 160 mm

## Countertop

Length from 59 to 320\* cm  
Width from 40 to 60 cm

\* Jumbo slab only for Silestone®. For the maximum length, continuity of veins in the side skirts is not possible.

## Available colours

Available in all Silestone® 20 mm colours, polished or suede and Dekton® 12 mm colours. Please scan the below QR code to check the latest portfolio of Silestone® and Dekton® colours



# HLine Flex

DEKTON® silestone®

The perfect combination between a Silestone® or Dekton® countertop and an under counter ceramic washbasin, providing full functionality and ease of cleaning for your project.



## Characteristics

1. Sanitary porcelain basin.
2. Concealed overflow.
3. Additional basins can be supplied and fitted.
4. Custom options for countertop as: towel rails, cut outs, side legs (non structural), skirt heights, etc.
5. Click-clack valve included.
6. Support bars included (for countertops with skirt).

## Tap

With or without drill holes for taps

## Overflow

With overflow

## Under countertop ceramic basin

Standard: 49 x 30 x 10 cm

## Edging

12 mm straight edge  
Silestone® / Dekton®  
Skirt: 210 mm

## Countertop

Length from 60 to 320\* cm  
Width from 46 to 60 cm

\* Jumbo slab only for Silestone®. For the maximum length, continuity of veins in the side skirts is not possible.

## Available colours

Available in all Silestone® 12 mm colours, polished or suede and Dekton® 12 mm colours. Please scan the below QR code to check the latest portfolio of Silestone® and Dekton® colours



# HLine Urban

DEKTON® silestone®

A combination of Silestone® or Dekton® countertop and ceramic countertop washbasin, featuring a modern design and suitable for all needs.



## Characteristics

1. Basin made of porcelain.
2. Modern rounded design.
3. Without overflow and tap ledge.
4. Possibility of adding more basins and decide the positioning
5. Custom options for countertop as: towel rails, cut outs, side legs (non structural), skirt heights, etc.
6. Click clack valve included
7. Includes supports bars for countertops with skirts

## Tap

With or without drill holes for taps

## Top ceramic basin

Standard: Ø45 x 14 mm

## Edging

12 mm straight edge for Silestone® and Dekton®  
Skirt: 100 mm

## Countertop

Length from 45 to 320\* cm  
Width from 45 to 60 cm

\* Jumbo slab only for Silestone®. For the maximum length, continuity of veins in the side skirts is not possible.

## Available colours

Available in all Silestone® 12 mm colours, polished or suede and Dekton® 12 mm colours. Please scan the below QR code to check the latest portfolio of Silestone® and Dekton® colours



# HLine Bath Top

DEKTON® silestone®

A new concept designed for shelves or countertops in the bathroom. A solution that will add a sophisticated touch to this special space of your home.



## Characteristics

1. Fully customisable: tap or drain drill holes for countertop washbasins, rough or polished cut-outs for recessed or under counter washbasins, etc.
2. Suitable for use with basins made of any material.
3. Elements can be placed individually.
4. Custom options for countertop as: towel rails, cut outs, side legs (non structural), skirt heights, etc.
5. Support bars included (for countertops with skirt).

## Drill holes

With or without drill holes

## Edging

12 mm straight edge for Silestone® and Dekton®  
Skirt: 60 / 100 / 210 mm

## Countertop

Length from 60 to 320\* cm  
Width from 30 to 60 cm

\* Jumbo slab only for Silestone®. For the maximum length, continuity of veins in the side skirts is not possible.

## Available colours

Available in all Silestone® 12 mm colours, polished or suede and Dekton® 12 mm colours. Please scan the below QR code to check the latest portfolio of Silestone® and Dekton® colours



# Shower trays

Designs that perfectly fit the space.

Manufactured in non-slip finishes such as Dekton® Grip, Grip+ and sandblasted Silestone®, our portfolio of shower trays achieves visual consistency throughout the space by integrating all the different features. A single surface for all applications, resulting in an atmosphere full of aesthetic harmony, balance and spaciousness.



**5**  
YEAR  
COSENTINO  
WARRANTY

# Shower trays

## Full product range

Five models of customisable shower trays in a wide range of colours and finishes, which adapt to any space and technical requirement, no matter how complicated it may seem.



**Exelis**  
Silestone®

P. 226



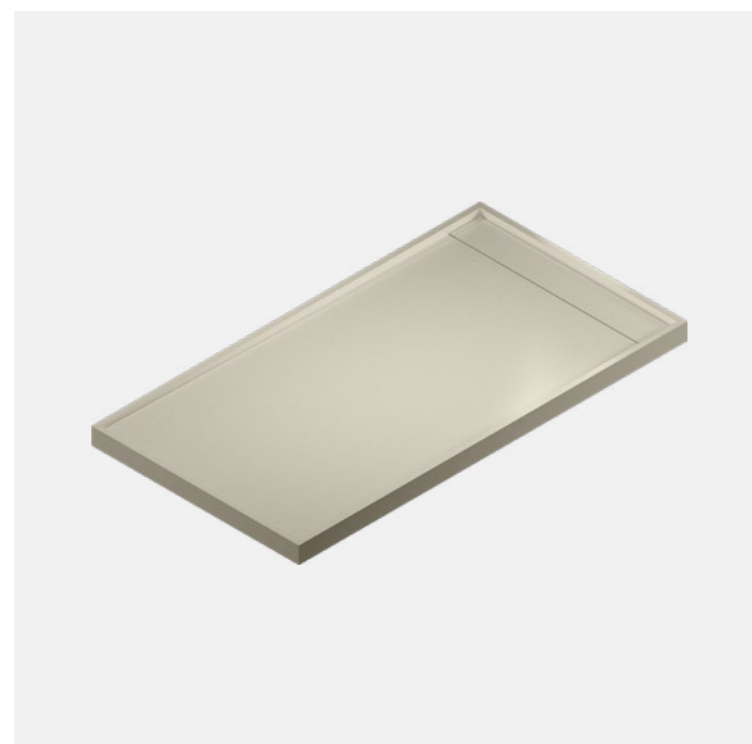
**Kador Suite**  
Silestone®

P. 228



**Rainfloor**  
Dekton®

P. 222



**Katräl**  
Dekton®

P. 224



**Wakka**  
Silestone®

P. 230



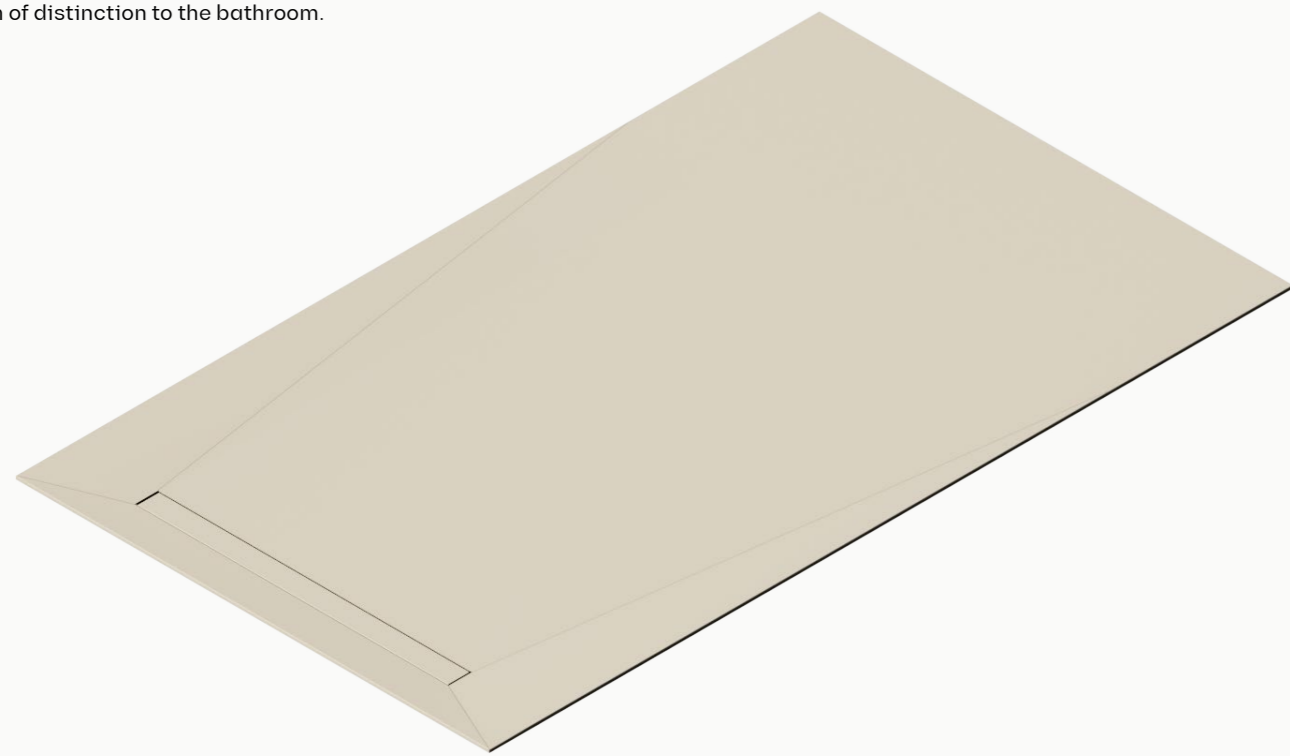
**Wakka Brim**  
Silestone®

P. 232

# Rainfloor

≡ DEKTON®

Solution according to the different design trends in the shower area. Combine Dekton® with any evacuation system available on the market: grilles in steel, ABS or covered with Dekton® itself. An elegant and quality product to give a touch of distinction to the bathroom.



## Characteristics

1. Premium bespoke integrated shower flooring.
2. Versatile solution integrated with the rest of the finishes.
3. Flush fitted shower flooring.
4. With the best textured finishes Dekton® Grip/Grip+.
5. Suitable for a wide variety of drainage systems.
6. 5 year warranty for antislip finishes.
7. Easy on-site installation.
8. Possibility to send the pieces already cut or to cut them on site.

## Dimensions

Standard cladding format  
Length from 71 to 159 cm  
Width from 71 to 142 cm

Made to measure

## Recommended thickness

8 mm

## Surface

Dekton® Grip anti-slip finish (Class B, DIN 51097) and Grip + (Class C, DIN 51097).

## Available colours

Available in all Dekton® 8 and 12 mm colours. Please scan the below QR code to check the latest portfolio of Dekton® Grip/Grip+ colours

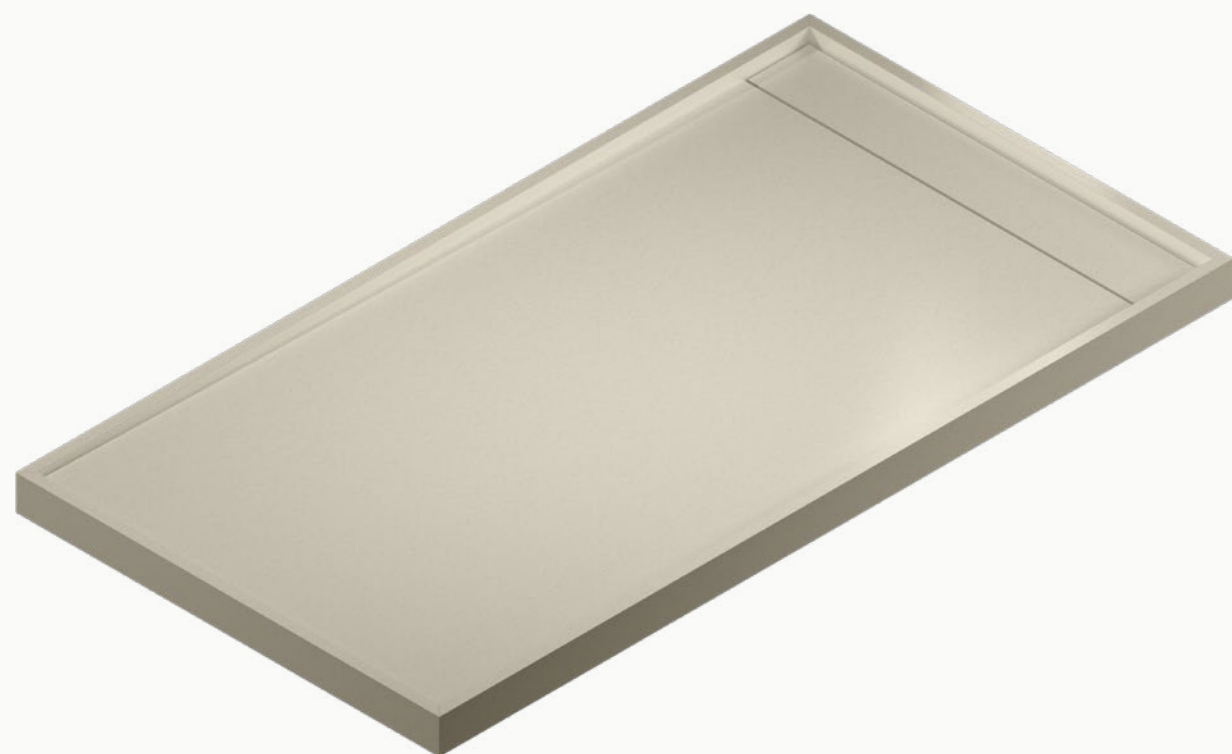




# Katräl

DEKTON®

The new framed shower tray in Dekton®, with a versatile and smart design, where the drain is covered in the same material to aim the perfect visual continuity in your bathroom space.



## Características

1. Standard perimeter frame height 6.5 cm and width 2 cm, polished on the inside.
2. Hidden drainage area for perfect integration with the rest of the elements.
3. Versatile solution available in a wide range of measurements.
4. With the best textured finishes Dekton® Grip/Grip+.
5. 5 year warranty for antislip finishes.
6. Optional cut-outs to suit space available on request.
7. Installation flush with the floor or on top.
8. Valve with siphon and stainless steel shower drain included.

## Valve

Centered in one of the short side of the piece

## Perimeter frame

2 cm flat surface for optimum positioning of the shower screen

## Dimensions

Length from 70 to 200 cm  
Width from 70 to 120 cm

## Edging

65 mm straight, polished on the inside

## Surface

Dekton® Grip anti-slip finish (Class B, DIN 51097) and Grip + (Class C, DIN 51097).

## Available colours

Available in all Dekton® 12 mm colours. Please scan the below QR code to check the latest portfolio of Dekton® Grip/Grip+ colours



Shower trays



# Exelis



A simple but robust design, with a fourway drainage system suitable for any need. Its textured finish gives the shower tray the highest anti-slip properties.



## Characteristics

1. Flat perimeter with elegant round corners.
2. Four-way drainage system suitable for any need.
3. Possibility to change the position of the valve where needed (depending on the dimension of the tray).
4. Optional cut-outs to suit space available on request.
5. Optional side slot for shower screen installation.
6. Installation flush with the floor or on top.
7. Valve with siphon and stainless steel shower drain included.

## Valve

Custom position of the valve.

## Perimeter area

4 cm flat surface for optimum positioning of the shower screen

## Dimensions\*

Length from 70 to 320\* cm  
Width from 70 to 150\* cm

\*Jumbo slab only. N-Boost treatment is not applied to sandblasted areas.

## Edging

30 mm straight polished

## Surface

Sandblasted anti-slip finish all over (Class B, DIN 51097)

## Available colours

Available in all Silestone® 30 mm colours, polished. Please scan the below QR code to check the latest portfolio of Silestone® colours



# Kador Suite



Its perimeter frame design, fully formed, ensures perfect leak tightness during showering. drainage slope to a full width linear water collection area.



## Characteristics

1. Standard perimeter frame 5 cm high and 2 cm wide, which can be extended to 3, 4 or 5 cm wide.
2. Extra cover for the drainage area available.
3. Soft sandblasted strips for easy cleaning.
4. Optional cut-outs to suit space available on request.
5. Optional side slot for shower screen installation.
6. Installation flush with the floor or on top.
7. Valve with siphon and stainless steel shower drain included.

## Valve

Custom positioning

## Perimeter frame

2 cm flat surface for optimum positioning of the shower screen

## Dimensions

Length from 70 to 200\* cm  
Width from 70 to 150\* cm

\*Jumbo slab only. N-Boost treatment is not applied to sandblasted areas.

## Edging

50 mm straight polished

## Surface

Sandblasted strips (Class B DIN 51097)

## Available colours

Available in all Silestone® 20 mm colours, polished or suede. Please scan the below QR code to check the latest portfolio of Silestone® colours



# Wakka



Made in one piece, without vertical joints. Its single slope makes it functional and easy to fit into the bathroom floor, providing a simple, practical and elegant design.



## Characteristics

1. Made in one piece, with no additional material that would require vertical joints.
2. Designed for integration and continuity with the surrounding elements.
3. Soft sandblasted strips for easy cleaning.
4. Optional cut-outs to suit space available on request.
5. Installation flush with the floor (recessed).
6. Valve with siphon and stainless steel grid included.

## Valve

Centered in one of the short side of the piece

## Side frames

1.5 cm flat surface for optimum positioning of the shower screen

## Dimensions

Length from 70 to 250\* cm  
Width from 70 to 150\* cm

\*Jumbo slab only. N-Boost treatment is not applied to sandblasted areas.

## Edging

Decreasing edge from 30 to 5 mm

## Surface

Sandblasted strips (Class B DIN 51097)

## Available colours

Available in all Silestone® 30 mm colours, polished or suede. Please scan the below QR code to check the latest portfolio of Silestone® colours



# Wakka Brim



An eye-catching tray, with a sophisticated and technological look suitable for all uses. Choose a Wakka tray with two additional side frames, without vertical joints.



## Characteristics

1. Tray with two side frames, with a subtle chamfer towards the interior to facilitate water collection.
2. Disruptive and innovative design compared to traditional shower trays.
3. Extra cover for the drainage area available.
4. Soft sandblasted strips for easy cleaning.
5. Optional cut-outs to suit space available on request.
6. Installation flush with the floor or on top.
7. Valve with siphon and stainless steel shower drain included.

## Valve

Centered in one of the short side of the piece

## Side frames

2.5 cm flat surface for optimum positioning of the shower screen

## Dimensions

Length from 70 to 250\* cm  
Width from 70 to 150\* cm

\*Jumbo slab only. N-Boost treatment is not applied to sandblasted areas.

## Edging

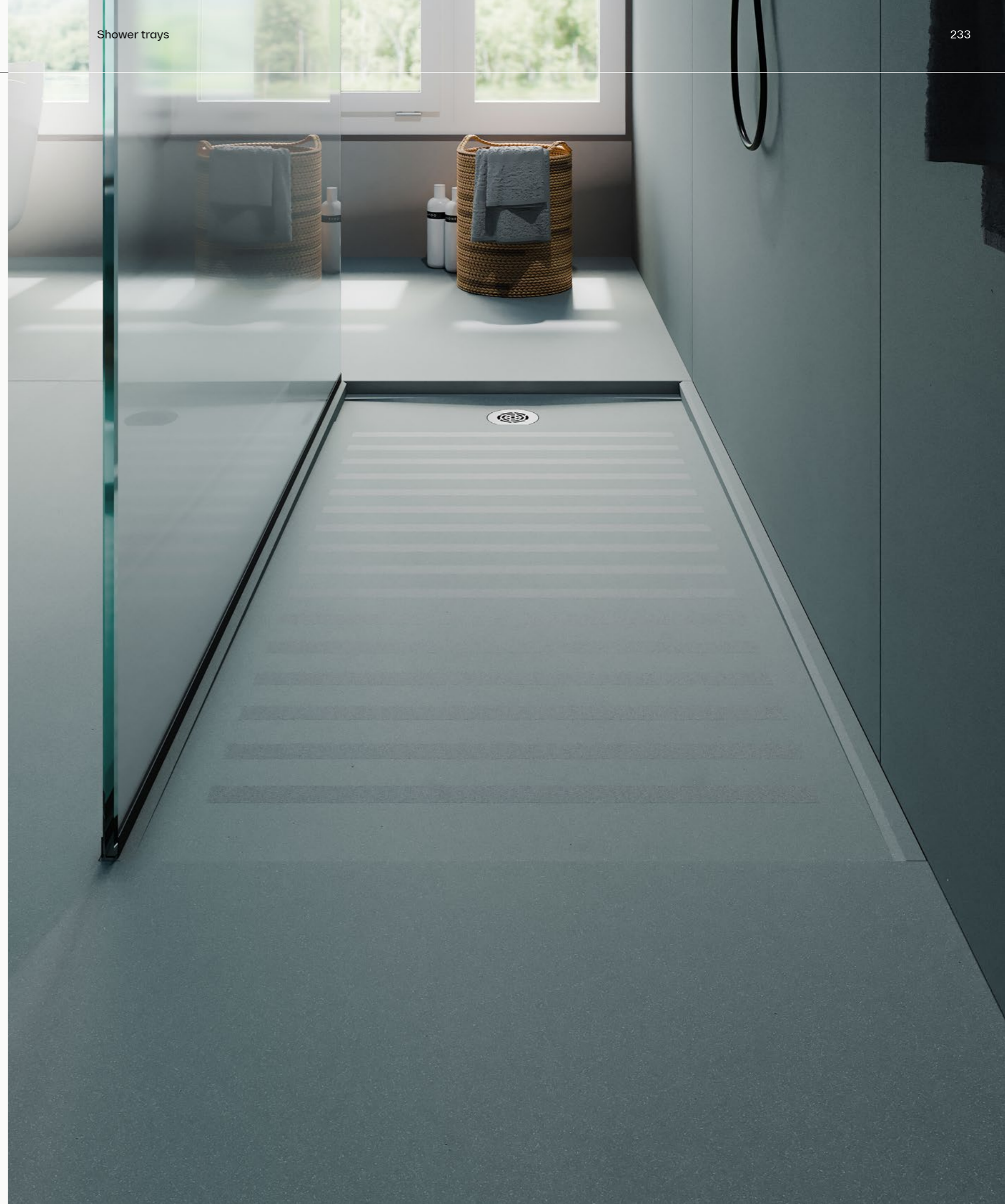
30 mm straight polished

## Surface

Sandblasted strips (Class B, DIN 51097)

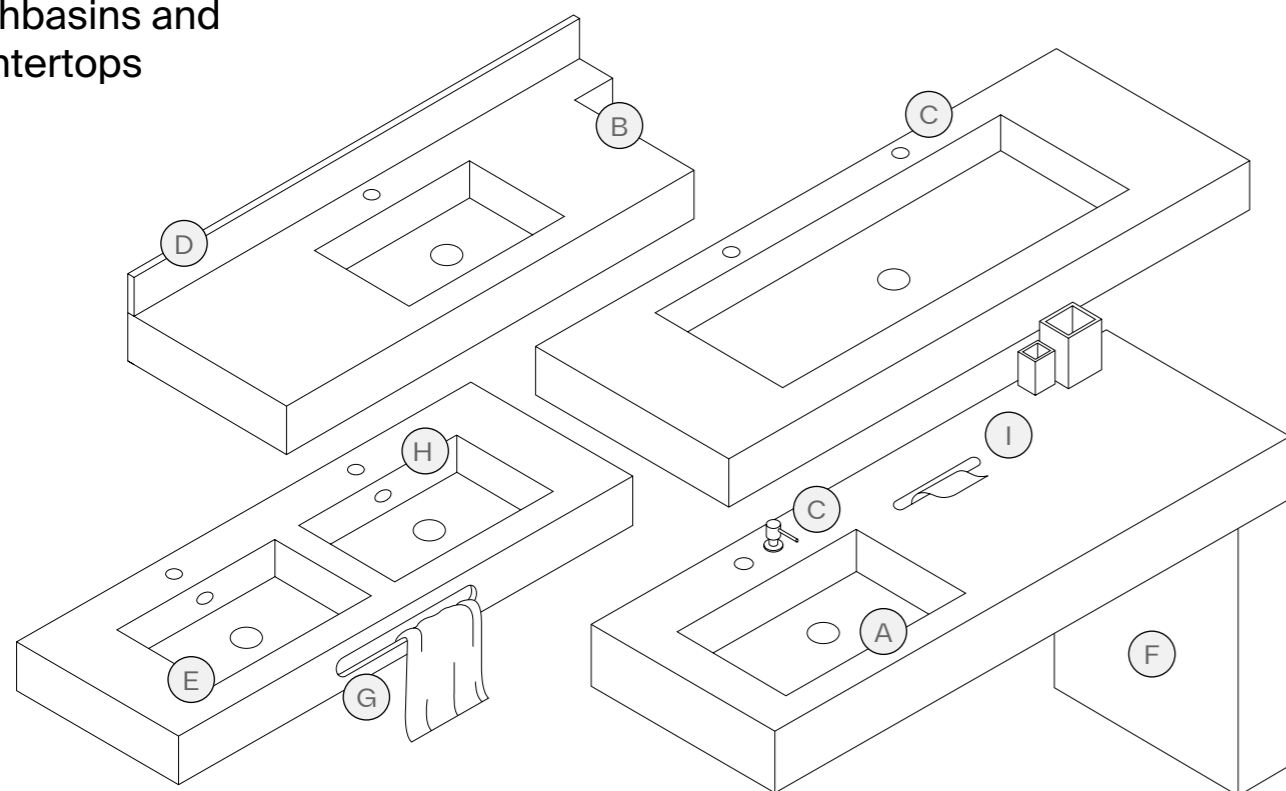
## Available colours

Available in all Silestone® 30 mm colours, polished or suede. Please scan the below QR code to check the latest portfolio of Silestone® colours



# Custom design operations

## Washbasins and countertops



- A. Change in basin position.
- B. Mortises in the countertop to fit the space.
- C. Extra drill hole for tap/soap dispenser (1 pc. per additional basin is included).
- D. Custom-made trim.
- E. Additional basin.
- F. Extra leg with butt or mitre joint (maximum size 90 x 60 cm. Width according to standard washbasin skirt).
- G. Towel rail (distance between washbasin and edge must be  $\geq 9$  cm).  
Small: 40 x 5 cm  
Medium: 60 x 5 cm  
Large: 80 x 5 cm
- H. Overflow (depending on model).
- I. Cut out for tissue box (15 x 3 cm)

### Customised operations

Polished cut out (for under vanity top up to 60 x 40 cm)

Rough cut-out (up to  $\varnothing 8$  cm, for vanity top drain)

### Extra cover

Simplicity and Reflection.

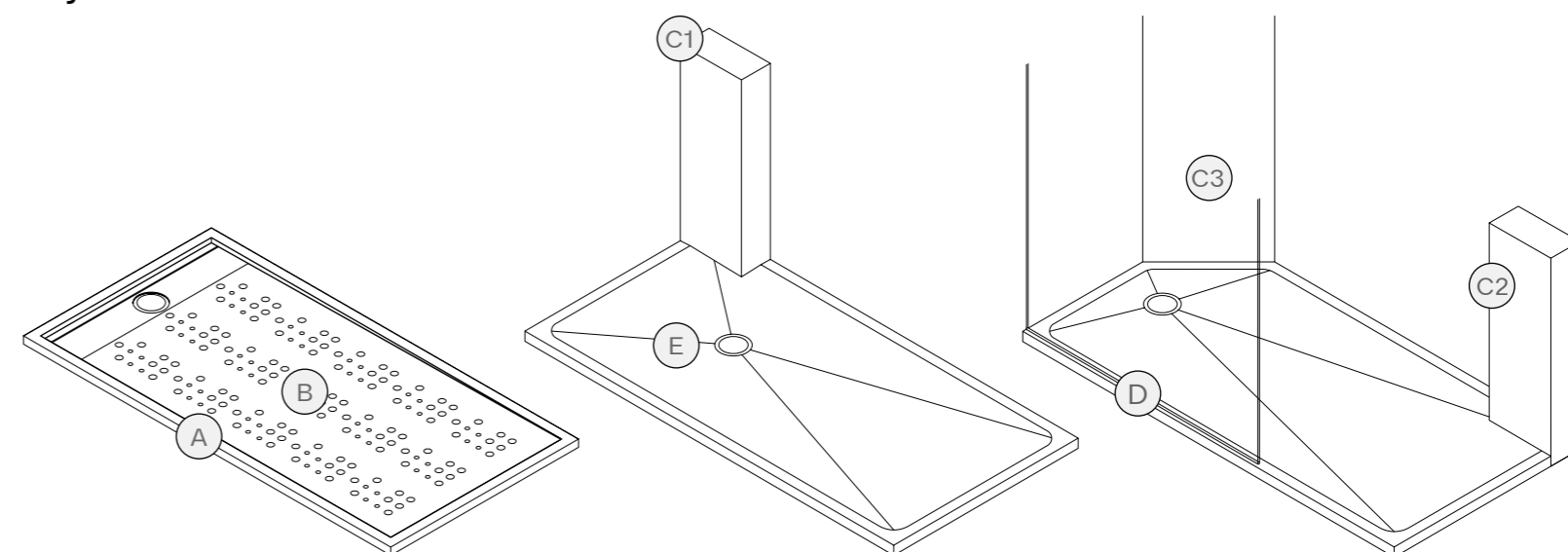


### Washbasin installation guide

Access the guide by scanning the QR code.



## Shower trays



A. **Kador Suite:** Perimeter frame (3, 4 or 5 cm) for shower screen fitting.

B. **Kador Suite:** customisable sandblasting, subject to slip analysis.

C1. **Exelis:** Straight cut in the shower tray valve area to suit the space.

C2. All: Straight cut in the rear area of the shower tray to suit the space.

C3. All: Diagonal cut in the shower tray to suit the space.

D. **Kador Suite and Exelis:** Side cut-out for shower screen installation.

E. **Exelis:** Change of valve position (subject to certain limits).

### Extra cover

Kador Suite and Wakka Brim.



### Shower tray installation guide

Access the guide by scanning the QR code.



# Accessories



## Accessories for washbasins



Round click-clack basin waste <sup>(1)</sup>

**Washbasins**

Evita, Marie, Elegance, Symmetry, HLine Flex and HLine Urban

**Technical information**

Outlet connection: Ø32 mm (1 1/4")

Water flow: Qmax. 43 l/m

Code: 307383



Colour adapter for washbasin valve

**Washbasins**

Evita, Marie, Elegance, Symmetry, HLine Flex and HLine Urban

**Technical information**

Outside diameter: 62 mm

Inner diameter: 30 mm

Overflow: compatible

Code: 347138 (Matt Black), 347153 (Brushed Gold) and 347154 (Brushed Nickel)



Flat waste strainer <sup>(1)</sup>

**Washbasins**

Armony, Simplicity, Reflection and Silence

**Technical information**

Outlet connection: Ø32 mm (1 1/4")

Water flow: Qmax. 56 l/m

Code: 341538

## Accessories for shower trays



Shower tray valve with removable grate and siphon <sup>(4)</sup>

**Shower trays**

Exelis, Kador Suite, Wakka and Wakka Brim

**Technical information**

Outlet connection: Ø40 mm (1 1/2") x 115 mm

Water flow: Qmax. 43 l/m

Siphon: 30 mm

Code: 339708

1. Chrome valve supplied with the basin.
2. Adapter supplied when ordering an overflow as an extra. To be specified at the point of order when required.
3. Two supports supplied when ordering a washbasin with skirt. An extra support will be included for each additional basin ordered, at no extra cost. If more supports are required, please include them manually in the order.
4. Valve supplied with each shower tray.



Overflow adapter <sup>(2)</sup>

**Washbasins**

Elegance and Evita

**Technical information**

Max. length: 300 mm (11 4/5")

Water flow: Qmax. 15 l/m

Code: 324644



Colour adapter for overflow

**Washbasins**

Elegance and Evita

**Technical information**

Max. length: 320 mm (12 3/5")

Water flow: Qmax. 15 l/m

Code: 347147 (Matt Black), 347139 (Brushed Gold) and 347129 (Brushed Nickel)



Telescopic support <sup>(3)</sup>

**Washbasins**

Elegance, Armony, Symmetry, Simplicity, Reflection, Silence, Evita, Marie, HLine Flex/Urban and Bath Top.

**Technical information**

Length without extension: 355 mm (14")

Length with extension: 610 mm (24")

Height: 60 mm (2 1/2")

Width: 40 mm (1 3/5")

Anchor plate: 90 x 110 x 5 mm

(3 1/2 x 4 1/3 x 1/5")

Code: 347265





# Certifications

At Cosentino® we have a strong commitment to meeting the needs of our customers and suppliers and to the environment through the responsible management of our resources. To this end, we are committed to innovation and continuous improvement of our processes, products and services at a global level.

## Cosentino®

ISO 9001  
ISO 14001  
ISO 20400  
ISO 50001  
UNE 15896  
Leed and Breeam credits for Silestone®, Dekton® and Sensa by Cosentino®  
CSR (verified by KPMG) based on GRI (Global Reporting Initiative)

## Silestone®

Declare Label  
EPD (Environdec)  
VOC (UL) Greenguard and Gold  
VOC (Eurofins) A+

## Dekton®

Declare Label  
DGNB Label  
EPD (Environdec)  
VOC (UL) Greenguard and Gold  
VOC (Eurofins) A+  
Chemical Spot Test (SEFA)  
Fire Safety Certification APF-1525 (Applus), in accordance with EN 13501-1  
Combustibility Test (CSIRO), in accordance with AS 1530.1  
Fire Euroclass A1 (Tecnalia), in accordance with 13501-1  
Burning Characteristics (QAI), in accordance with ASTM E84-15b  
IMO Module B 50171/A2 MED, in accordance with the Marine Equipment Directive 2014/90/EU - Ships.  
IMO Module D SMS.MED2.D/109819/A.0, in accordance with the Marine Equipment Directive 2014/90/EU - Ships.  
USCG Module B 164.117 / EC2690 - Boats. Fire Test NFPA 285 (Tecnalia)

## Bathroom

### Washbasins

DoC (Declaration of Conformity), in accordance with EN 14688  
CSA 800580/IAPMO  
TJ5065 (QAI), in accordance with CSA B45.5-17 / IAPMO Z124

### Shower trays

DoC (Declaration of Performance), in accordance with EN 14527  
Slip-Resistant DIN 51097  
CSA 800580/IAPMO TJ5065 (QAI), in accordance with CSA B45.5-17 / IAPMO Z124

# Cosentino® Warranty

Washbasins  
Shower trays  
Bathroom countertops

## Cosentino® standard warranty letter

This Letter of Warranty (hereinafter, the 'Warranty') shall only be fully valid when the consumer has registered the project within 6 months of the purchase of the product, as indicated in the relevant section, and when the consumer submits the original invoice or purchase receipt (indicating the date of purchase and the name of the dealer of the product). The consumer shall send the defective product to COSENTINO GLOBAL S.L.U. (hereinafter, **COSENTINO**). In order to be effective, this Warranty must be registered online on the website [www.cosentino.com](http://www.cosentino.com). This Warranty is transferable.

COSENTINO® reserves the right not to offer the warranty service free of charge if the requirements set out in the previous paragraph are not met, or if the information provided by the consumer is false, incomplete or illegible. This Warranty is intended for non-professional end users and shall be considered applicable for residential use, such as any building or facility for private accommodation, whether it is a single-family or multi-family dwelling.

## End Products Manufactured by Cosentino®

This section of the Warranty is limited to end products manufactured under any of the COSENTINO® brands in the form of three-dimensional products, such as kitchen sinks, washbasins, bathroom countertops and shower trays (hereinafter, the 'End Products'), and covers any manufacturing defects in such products for a period of **FIVE (5) YEARS**, from the date of purchase.

All this under the terms, conditions and limitations described for the rest of SILESTONE® or DEKTON® by Cosentino® products in this document and also available on the website. This Warranty is only valid when the end products have been correctly installed (in accordance with the applicable regulations and the specific assembly instructions), and have been used correctly according to their intended application (Use, Care and Maintenance Guide). Consumable items (rubber elements, seals, valves, etc.) are not covered under this Warranty.

## Warranty Registration

To register as a holder of this Warranty, it must be activated via [www.cosentino.com](http://www.cosentino.com). This website requires certain information for registration, including information relating to the point of sale and/or the marble supplier, as well as the customer. Therefore, we recommend that customers register directly with the point of sale or marble supplier. At the end of the registration, the customer may print this Warranty for their use. In order to benefit from the Warranty, it must be registered within six (6) months of purchase.



<sup>(1)</sup> Check each approved model.



# C·Bath

**COSENTINO HEADQUARTERS**

Ctra. Baza a Huércal-Overa, km 59 / 04850  
Cantoria - Almería (Spain) / Tel.: +34 950 444 175  
info@cosentino.com

REV. 02 - 06/2023

**COSENTINO**